

S&E/RRT/hsm

Decision 95-12-015 December 6, 1995

BEFORE THE PUBLIC UTILITIES COMMISSION OF THE STATE OF CALIFORNIA

In the Matter of the Application of the)

SAN DIEGO METROPOLITAN)
TRANSIT DEVELOPMENT BOARD)

for an order authorizing construction)
of two light rail vehicle tracks at grade)
at Wagner Street, Petree Street,)
Arnele station entrance, Vernon Way,)
Bradley Avenue, Chem-tronics' driveway,)
and Billy Mitchell Drive; one light rail)
vehicle track at Cuyamaca Street,)
Prospect Avenue, Buena Vista Street, and)
Mission Gorge Road; and construction of)
one freight track at grade at Petree)
Street, Fletcher Parkway, and Vernon Way)
in the City of El Cajon and City of)
Santee in San Diego County, California.)

ORIGINAL

Application 93-04-048)
(Filed April 19, 1993)
Amended February 24, 1995)

ORDER MODIFYING DECISION 94-02-015

By Decision (D.) 94-02-015, dated February 3, 1994, in Application (A.) 93-04-048, San Diego Metropolitan Transit Development Board (MTDB) was authorized to construct two light rail tracks at grade across Wagner Street, Arnele Station Entrance, Petree Street, Vernon Way, Bradely Avenue, Chem-tronics' driveway, and Billy Mitchell Drive; one light rail street operational track at grade along Cuyamaca Street with crossings at Cuyamaca Street, Prospect Avenue, Buena Vista Street, and Mission Gorge Road; and one freight track at grade with crossings at Petree Street, Fletcher Parkway, and Fesler Street, in the Cities of El Cajon and Santee, San Diego County

MTDB filed a Petition for Modification of D.94-02-015 on February 24, 1995, requesting that D.94-02-015 be modified to add

two at grade pedestrian crossings at Chem-tronics' driveway; replace the legal description for the Arnele Station Entrance at grade crossing; replace the table showing the proposed warning devices for the Santee Extension Project; replace Crossing Numbers for the Arnele Station entrance and Petree Street Freight crossings; and replace the drawings for Bradely Avenue, Billy Mitchell Drive, and Cuyamaca Street, in the Cities of El Cajon and Santee, San Diego County.

Changes in street and roadway geometrics as well as vehicular traffic patterns, created the need by MTDB to incorporate certain engineering revisions to provide an increase in crossing safety in the Santee Light Rail Extension Project. The Commission staff is in agreement with MTDB and recommended that the instant Petition to Modify D. 94-02-015.

The Commission's Safety and Enforcement Division staff has inspected the project site, has reviewed MTDB's request, concurs with proposed modifications, and recommends that the Petition for Modification be granted.

Findings of Fact:

1. Petition for Modification of D.94-02-015 was published in the Commission's Daily Calendar on March 28, 1995. No Protests have been received. A public hearing is not necessary.

2. MTDB was granted authority, under Public Utilities Code Sections 1201-1205 by D.94-02-015 to construct light rail tracks at-grade at eleven (11) branch and three (3) spur crossings and to perform other rail related activities between the limits of El Cajon Transit Center and the Santee Transit Center, a distance of 3.6 miles which will be required to complete MTDB's East Line Extension in El Cajon and Santee, San Diego County.

3. Public convenience, necessity and safety require the proposed changes as set forth in the Appendices.

Conclusion of Law:

MTDB's Petition to modify D.94-02-015 should be granted as set forth in the following order.

ORDER

IT IS ORDERED that D.94-02-015 is modified as follows:

1. San Diego Metropolitan Transit Development Board (MTDB) is authorized to construct two at grade pedestrian crossings at Chem-tronics' driveway, identified as Crossing No. 36D-18.54-D, and to perform other related rail modifications as more fully indicated and substantially as shown by plans attached to the amended application, and Appendices A, B, C, and D of this order in the Cities of El Cajon and Santee, San Diego County.
2. Protection at each Chem-tronics' driveway at-grade pedestrian crossings shall be two Standard No. 10 pedestrian type signals (General Order GO 75-C).
3. MTDB is authorized to modify the legal description for the Arnele Station Entrance at grade crossing, Crossing 36D-17.56.
4. This authorization shall expire if not exercised within two years from the effective date of this order or if the above conditions are not complied with. Authorization may be revoked or modified if public convenience, necessity or safety so require.

5. In all other respects, D. 94-02-015 shall remain in full force and effect.

This order is effective 30 days from today.

Dated DEC 6, 1995, at San Francisco, California.

DANIEL Wm. FESSLER

President

P. GREGORY CONLON

JESSIE J. KNIGHT, JR.

HENRY M. DUQUE

JOSIAH L. NEEPER

Commissioners

Amended Appendix A

As part of the project to construct the Santee Light Rail Extension in El Cajon and Santee, San Diego County, the San Diego Metropolitan Transit Development Board (MTDB) proposes to construct two light rail tracks and perform other work and alterations that are required to complete the rail project. The crossings shall be protected by automatic warning devices (GO-75-C) or as more fully described and identified below:

CPUC Crossing Number	Street Name	Warning Devices	Remark/Changes
36D-17.45	Wagner Street	2 Standard No. 9's Automatic Gate-Type Signals	No Change
36D-17.56	Arnele Station Entrance	2 Standard No. 9's Automatic Gate-Type Signals & Traffic Signals	Crossing No. Changed to 36D-17.56
36D-17.70	Petree Street	3 Standard No. 9's Automatic Gate-Type Signals & Traffic Signals	Crossing Protection Up-Graded to 3 No. 9's
36D-18.14	Vernon Way	2 Standard No. 9's Automatic Gate-Type Signals	No Change

CPUC Crossing Number	Street Name	Warning Devices	Remark/Changes
36D-18.47	Bradley Avenue	6 Standard No. 9's Automatic Gate-Type Signals	Crossing Protection Up-Graded to 6 No. 9's
36D-18.54-D	Chem-tronics' Drwy. Pedestrian Crossings	4 Standard No. 10's	Crossings Added
36D-18.55	Chem-tronics' Driveway	2 Standard No. 9's Automatic Gate-Type Signals	No Change
36D-18.79	Billy Mitchell Drive	2 Standard No. 9A's Automatic Gate-Type Signals with Cantilever	Crossing Protection Up-Graded to 2 No. 9A's
36D-19.63	Cuyamaca Street	1 Standard No. 9A Automatic Gate-Type Signal with Cantilever	Crossing Protection Up-Graded to 1 No. 9A

Street Running Portion

36D-19.73	Prospect Avenue	Traffic Signals	No Change
36D-19.98	Buena Vista Street	Traffic Signals	No Change
36D-20.23	Mission Gorge Road	Traffic Signals	No Change

CPUC

Crossing

Warning

NumberStreet NameDevicesRemark/ChangesFreight Only Portion

36D-17.65-C	Petree Street	3 Standard No. 9's Automatic Gate-Type Signals and 2 Standard No. 8-A Flashing Light Signals with Cantilever and Traffic Signals	Crossing No. Changed to 36D-17.65-C
36D-17.81-C	Fletcher Parkway	4 Standard No. 8-A's Flashing light Signals with Cantilevers and 2 Standard No. 8's Flashing Light Signals	No Change
36D-17.91-C	Fesler Street	2 Standard No. 8's Flashing Light Signals	No Change

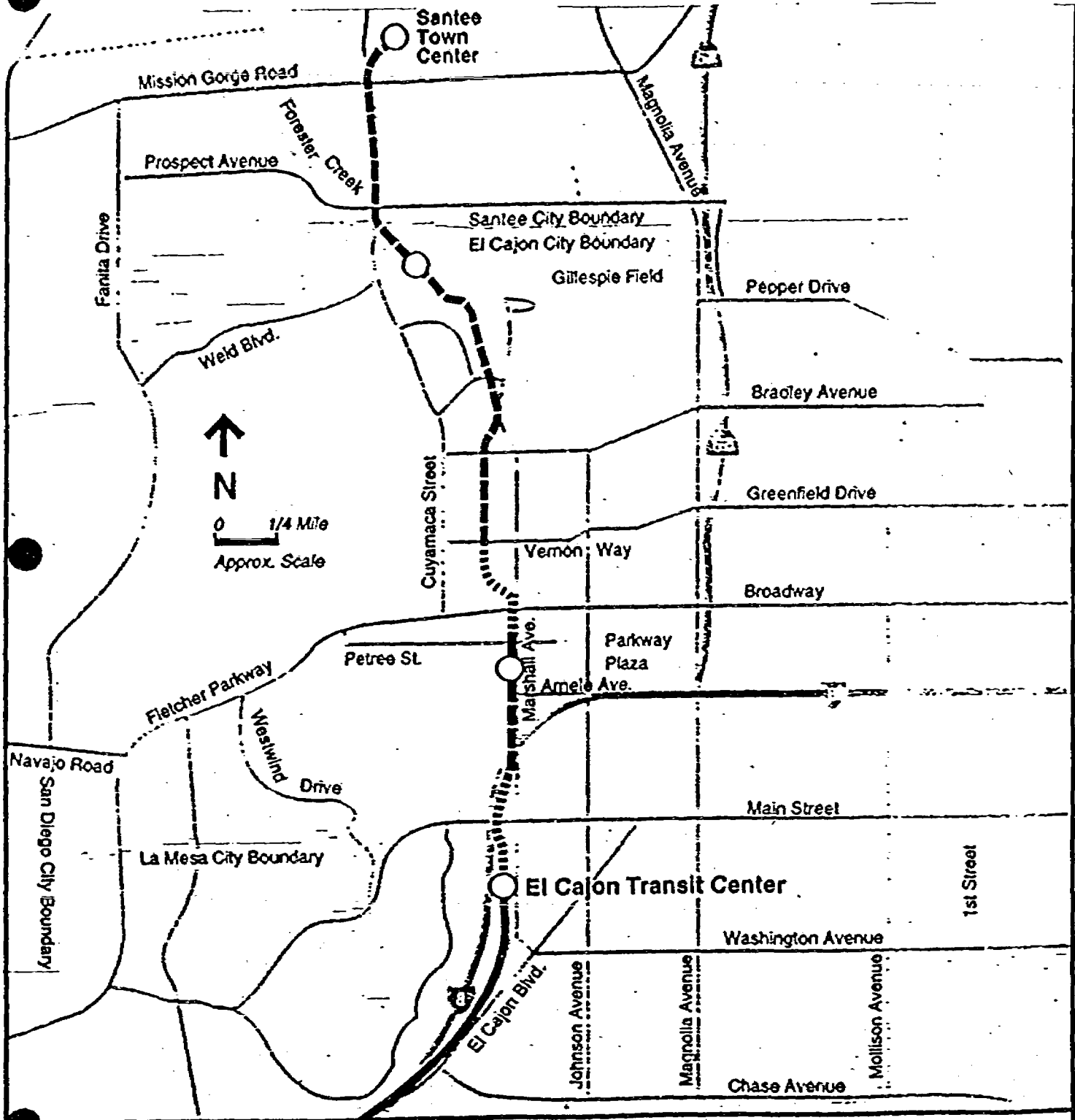
Amended Appendix B
Santee Extension Crossings

CPUC Crossing Number	Street Name	Warning Devices
36D-17.45	Wagner Street	2 Standard No. 9's
*36D-17.56	Arnele Station Entrance	2 Standard No. 9's & Traffic Signals
36D-17.70	Petree Street	*3 Standard No. 9's & Traffic Signals
36D-18.14	Vernon Way	2 Standard No. 9's
36D-18.47	Bradley Avenue	*6 Standard No. 9's
36D-18.54-D	Chem-tronics' Drwy. Pedestrian Crossings	*4 Standard No. 10's
36D-18.55	Chem-tronics' Driveway	2 Standard No. 9's
36D-18.79	Billy Mitchell Drive	*2 Standard No. 9A's
36D-19.63	Cuyamaca Street	*1 Standard No. 9A
36D-19.73	Prospect Avenue	Traffic Signals

* Denotes change or revision from (D.) 94-02-015





<u>CPUC Crossing Number</u>	<u>Street Name</u>	<u>Warning Devices</u>
36D-19.98	Buena Vista Street	Traffic Signals
36D-20.23	Mission Gorge Road	Traffic Signals
*36D-17.65-C	Petree Street Freight	*3 Standard No. 9's 2 Standard No. 8-A's Traffic Signals
36D-17.81-C	Fletcher Parkway Freight	4 Standard No. 8-A's 2 Standard No. 8's
36D-17.91-C	Fesler Street Freight	2 Standard No. 8's

* Denotes change or revision from (D.) 94-02-015



MTDB

East Line/ Santee LRT Alignment

-  Proposed Alignment
-  Grade Separations
-  Existing East Line
-  LRT Station

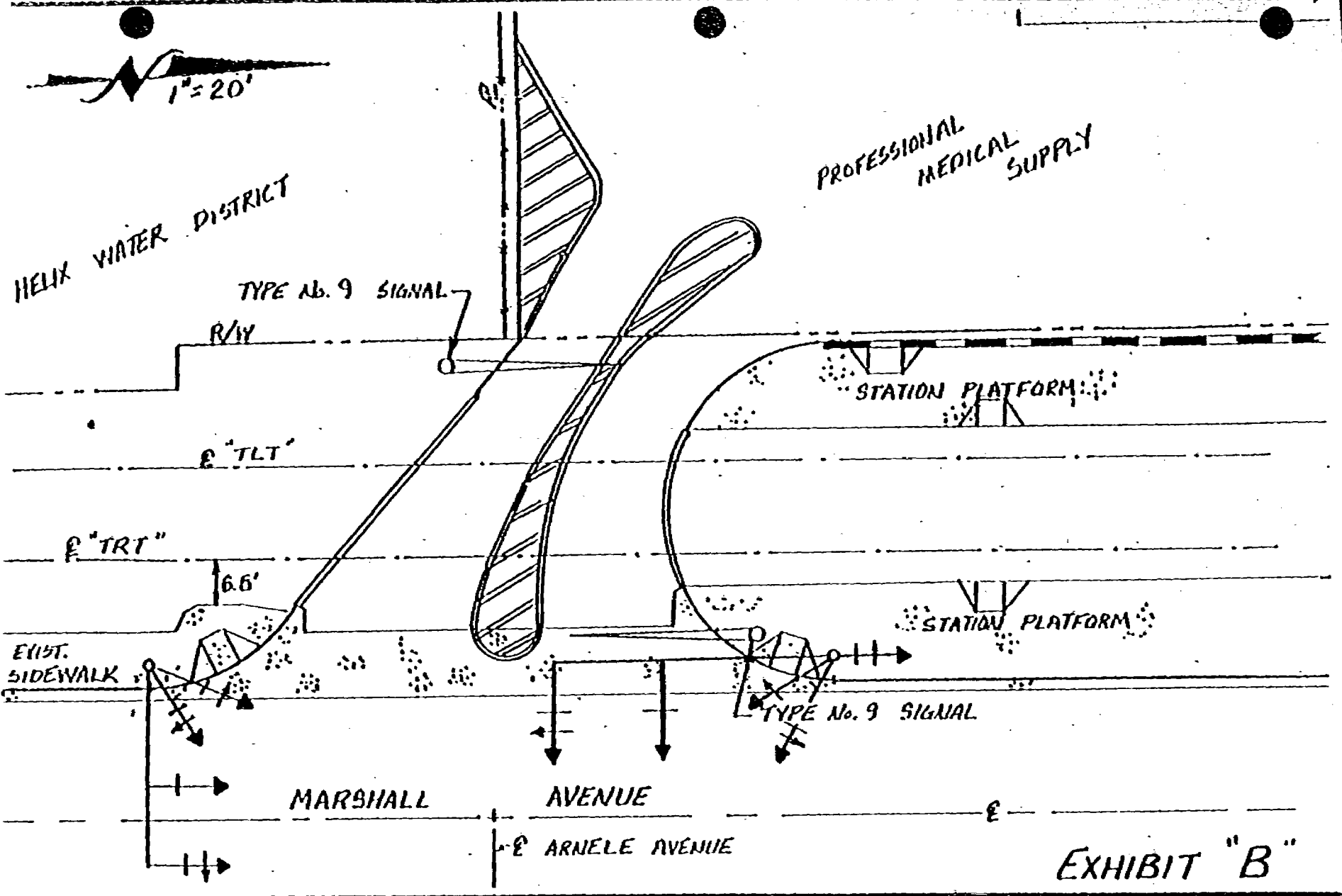


EXHIBIT "B"

MTDB
Metropolitan Transit Development Board
255 Imperial Avenue, Suite 1000, San Diego, Ca. 92101-7190 (619)231-1166



SANTEE LRT EXTENSION
C.P.U.C. No. 36D-17.56
ARNELE STATION ENTRANCE

SCALE:
AS SHOWN
MTDB CONTRACT No.
LRT-505
DATE:
12-29-94
Sht. No.

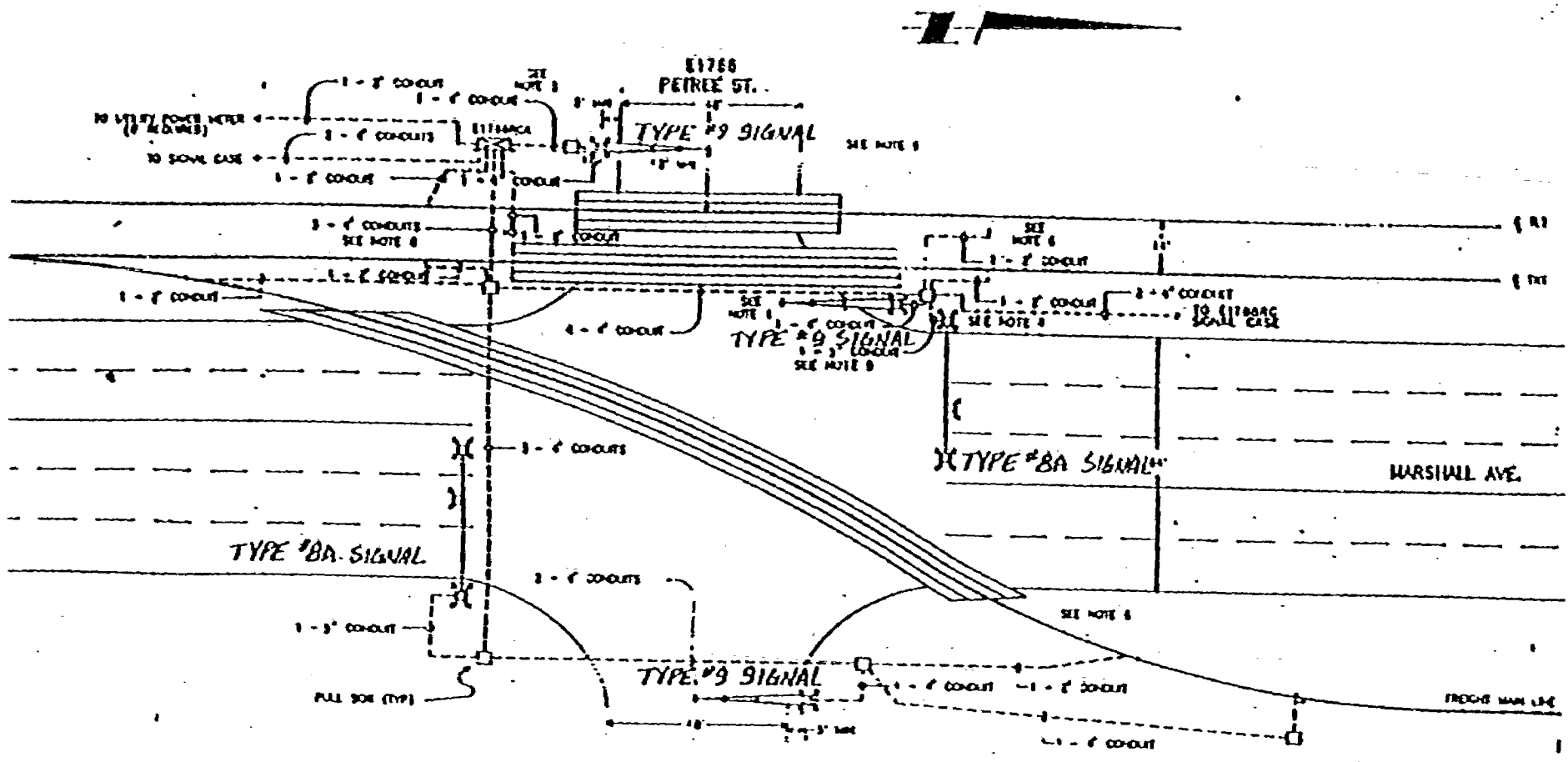



EXHIBIT "B"

ATDB 

Metropolitan Transit Development Board
 55 Imperial Avenue, Suite 1000, San Diego, Ca. 92101-2199 (619)231-1166

SANTEE LRT EXTENSION
 C.P.U.C. No. 36D-17.65-C
 PETREE STREET {FREIGHT}

SCALE: N.T.S.	
MTDB CONTRACT No. LRT-505	
DATE: 3-31-94	Shl. No.

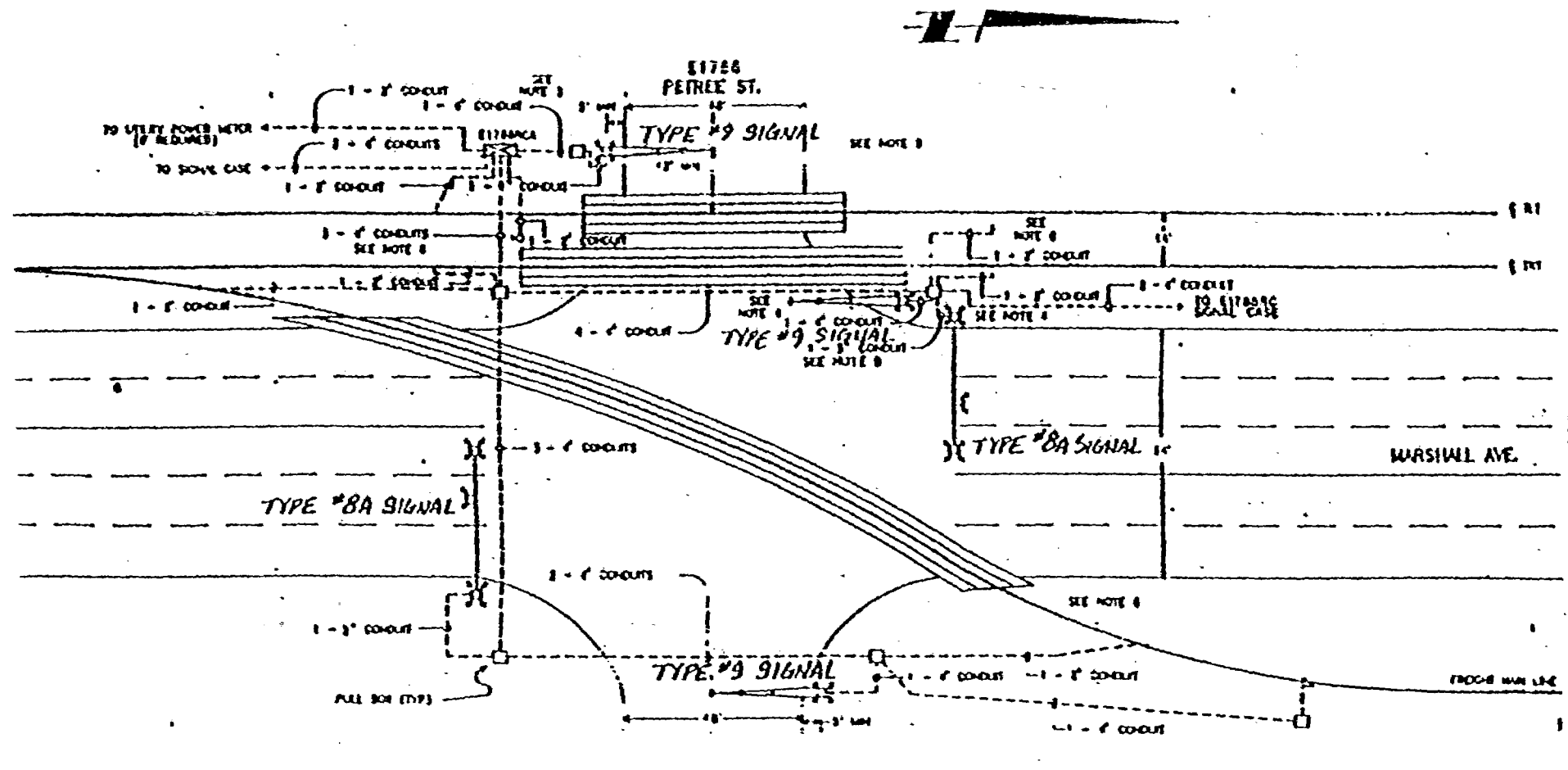


EXHIBIT "B"

MTDB



Metropolitan Transit Development Board
 255 Imperial Avenue, Suite 1000, San Diego, Ca. 92101-7190 (619)231-1166

SANTEE LRT EXTENSION
 C.P.U.C. No. 36D-17.70
 PETREE STREET (LRT)

SCALE:	N.T.S.
MTDB CONTRACT No.:	LRT-505
DATE:	3-31-94
Sheet No.:	

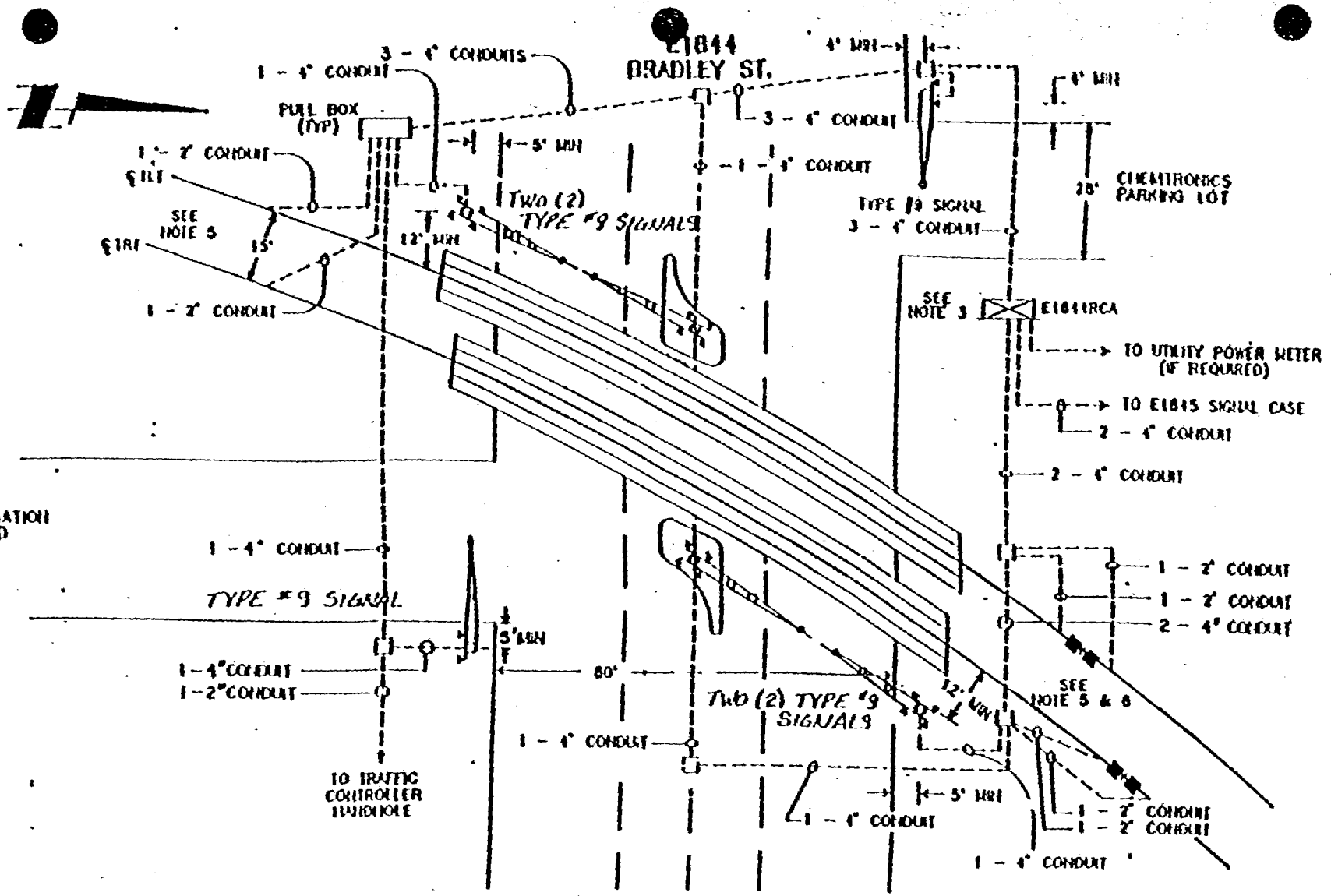


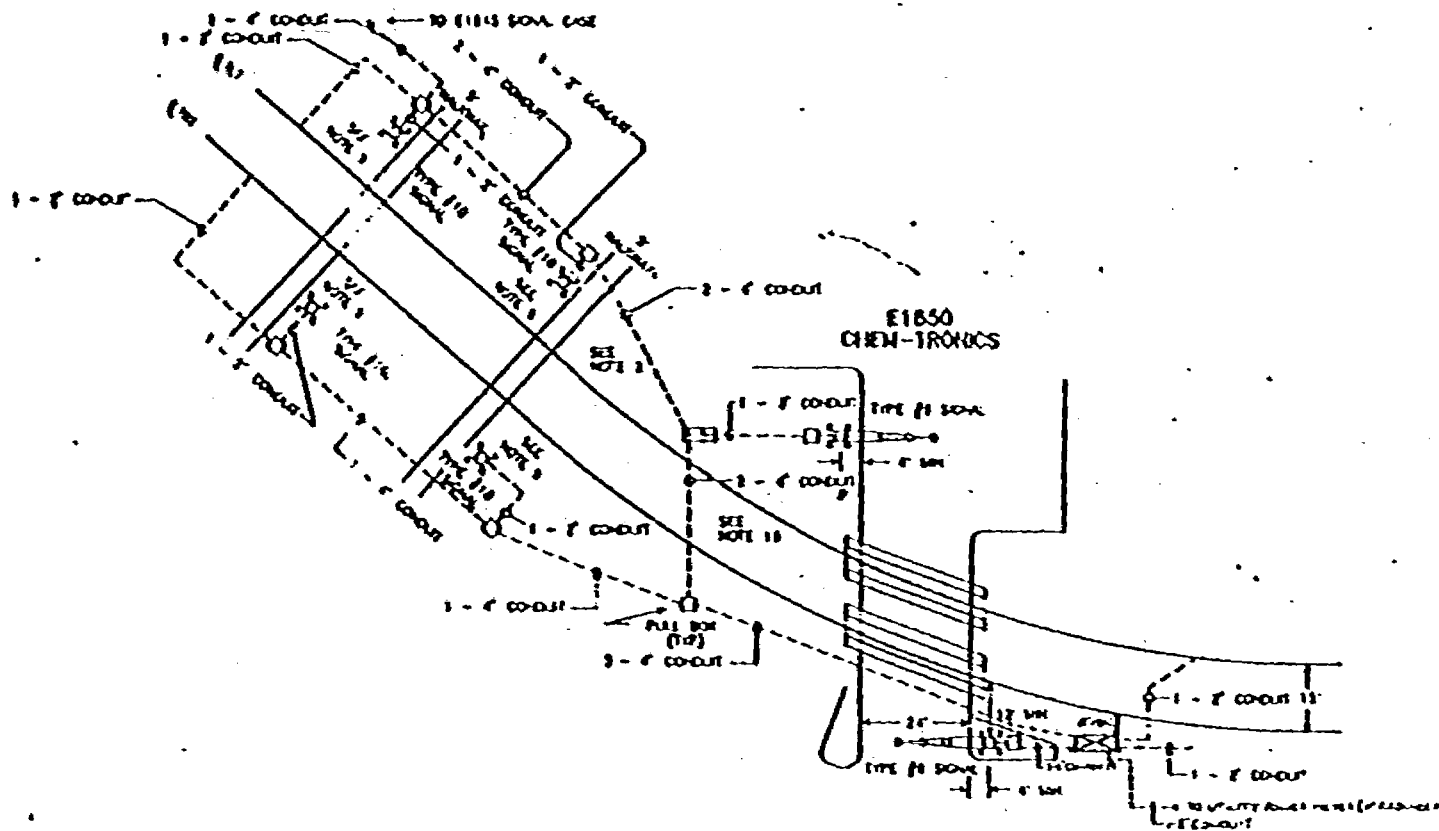
EXHIBIT "B"

TDB


San Diego Metropolitan Transit Development Board
 1635 La Jolla Village Drive, Suite 1000, San Diego, Ca. 92161-1160 (619)231-1166

SANTEE LRT EXTENSION
C.P.U.C. No. 36D-18.47
BRADLEY AVENUE

SCALE: 1" = 30'	
MTDB CONTRACT No. LRT-505	
DATE: 3-31-94	Blk. No.



DB



San Diego Transit Development Board
 4141 Avenida Suite 1000, San Diego, CA 92101-7490 (619)231-1400

EXHIBIT B
 C.P.D.C. No. 36 - 18.55
CHEMTRONICS DRY CROSSING

SCALE	
N.T.S.	
MTDB CONTRACT NO.	
LRT-505	
DATE	SHEET NO.

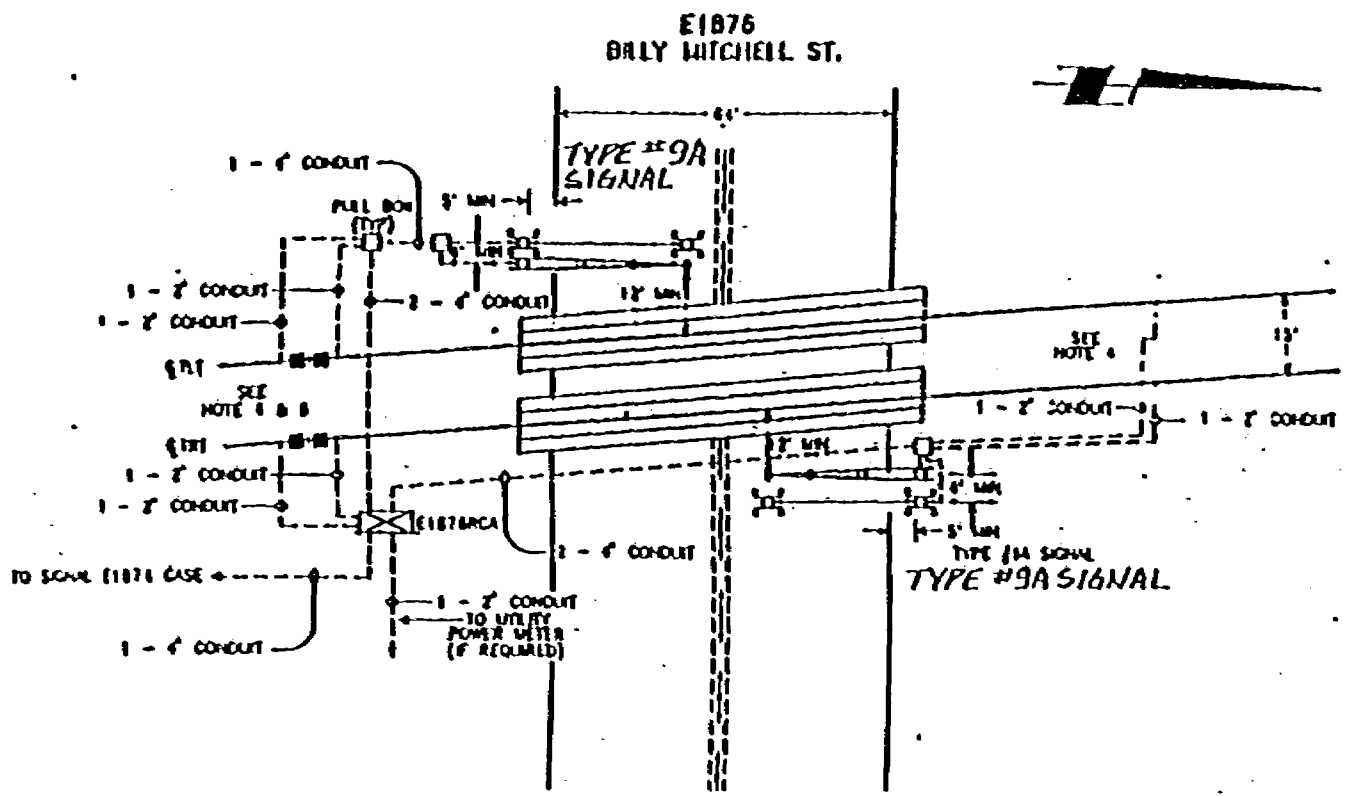


EXHIBIT "B"

MTDB

Metropolitan Transit Development Board
 1255 Imperial Avenue, Suite 1000, San Diego, Ca. 92101-7190 (619)231-1166

SANTEE LRT EXTENSION
 C.P.U.C. No. 36D-18.79
 BILLY MITCHELL DRIVE

SCALE	1"=40'
MTDB CONTRACT No.	LRT-505
DATE	3-31-94
Sht. No.	

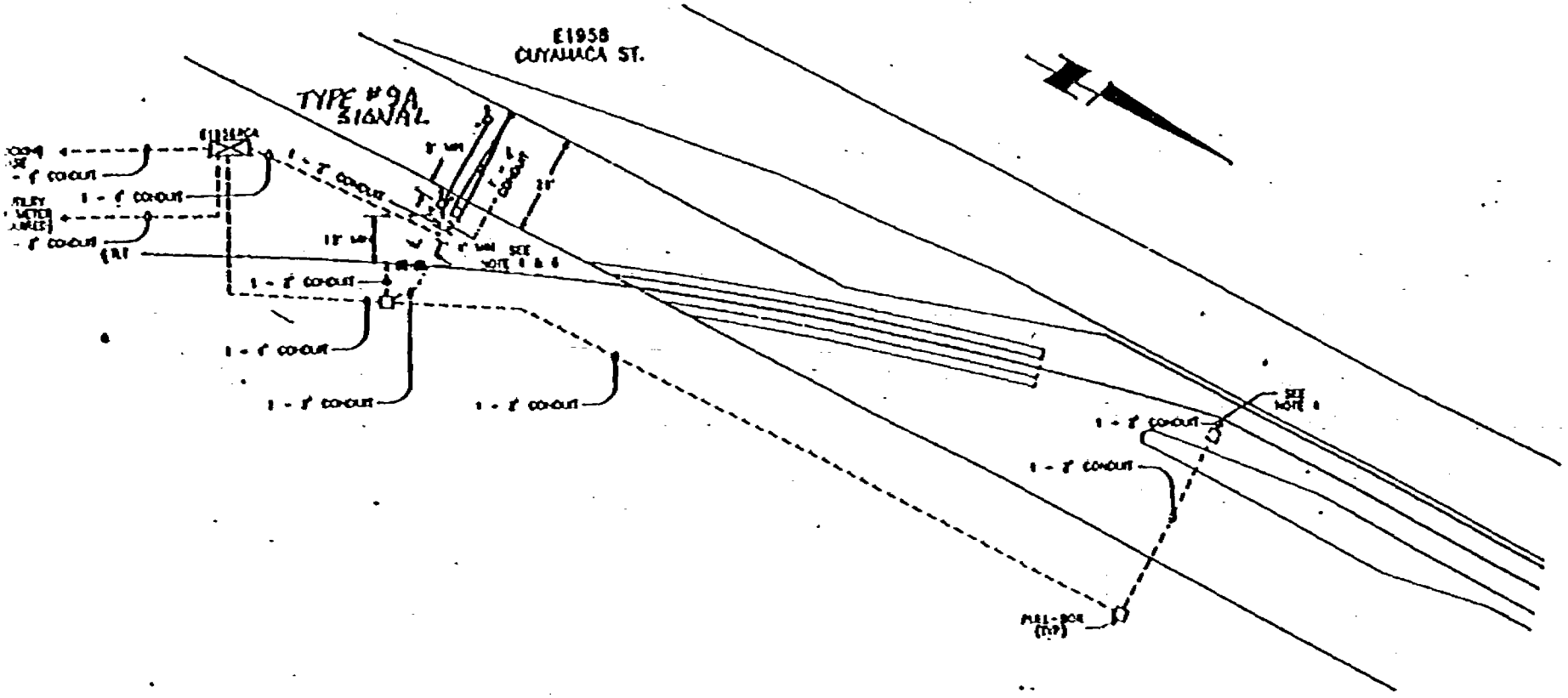


EXHIBIT "B"

DB

San Diego Metropolitan Transit Development Board
1615 La Jolla Village Drive, Suite 1000, San Diego, Ca. 92108-7490 (619)231-1166

SANTEE LRT EXTENSION
C.P.U.C. No. 36D-19.63
CUYAMACA STREET

SCALE: 1" = 40'
MTDB CONTRACT No.
LRT-505
DATE: 3-31-94
SHEET No.