

# marin clean energy

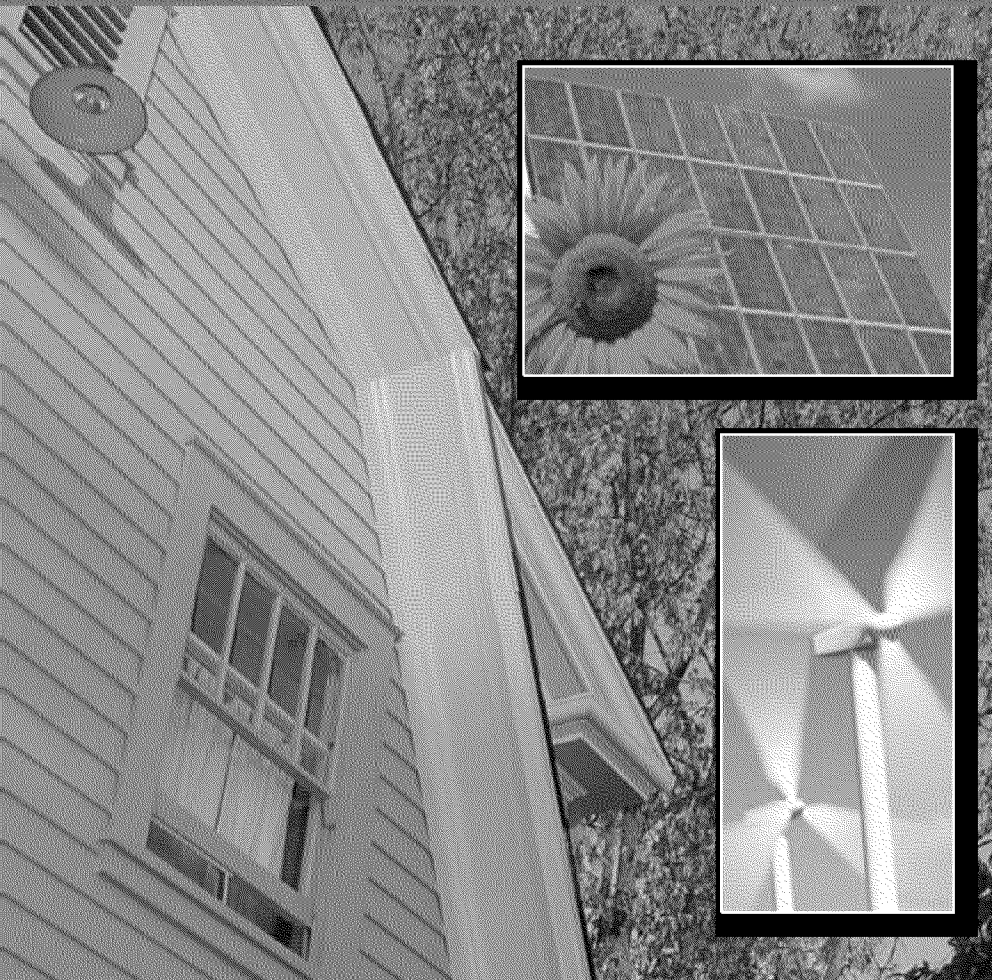
cleaner  
power

same  
reliable  
service

lower rates



marin  
clean  
energy



# cleaner power

Marin Clean Energy provides 25% clean, renewable power from sources like solar, wind, geothermal, hydro and biomass.

That's twice the amount of renewable energy that PG&E is able to provide. And Marin Clean Energy expects to more than double its renewable energy content by 2015, to 60%.

Non-polluting renewable energy helps fight global warming by reducing harmful greenhouse gas emissions and shrinking our dependency on dirty fossil fuels. It also helps preserve our clean air and our environment.



As Marin Clean Energy grows, we expect to tap into and develop renewable energy sources closer to home.

Not giant wind farms or sprawling fields of solar panels, but smaller rooftop solar installations, bio-mass generation from waste organic matter, and geothermal power from naturally-occurring underground heat, among other non-polluting sources.



## 100% clean energy option: DEEP GREEN

For customers whose commitment to clean energy and a clean environment run really deep, MCE offers Deep Green.

For just a little bit more on your monthly bill, Deep Green provides you with 100% renewable energy.

To order Deep Green, sign up at [www.MarinCleanEnergy.info](http://www.MarinCleanEnergy.info) or call 1-888-632-3674.



# reliable service

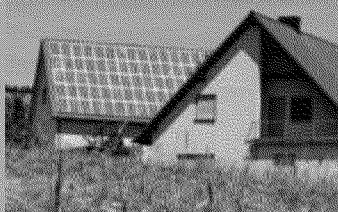


We know you're happiest with your energy service when you don't have to think about it. Marin Clean Energy doesn't change anything about your energy service—except making it cleaner.

## get PAID for your energy

Residents and businesses who generate their own power from solar panels can earn money.

Under a unique new program, customers can sell their excess electricity to Marin Clean Energy, or roll over energy credits from year to year.



For information about MCE's Net Energy Metering program or to sign up, please visit [www.MarinCleanEnergy.info](http://www.MarinCleanEnergy.info)

We purchase the power from clean, renewable sources and PG&E delivers it straight to your home or business through their distribution system and wires. It's that simple.

PG&E sends your monthly bill and provides customer service.

And those repair and maintenance teams in the familiar blue PG&E trucks continue to provide the same reliable service you're used to—rain or shine.

everything  
stays the same  
from PG&E...

same reliable service

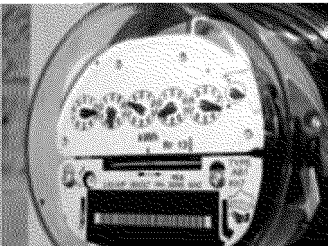
same Prompt  
Attention when  
you need help

same billing and  
customer service

...while marin

clean Energy  
secures cleaner  
power for marin

[www.MarinCleanEnergy.info](http://www.MarinCleanEnergy.info)



# lower rates

The rates you pay with Marin Clean Energy are lower than those you currently pay to PG&E.

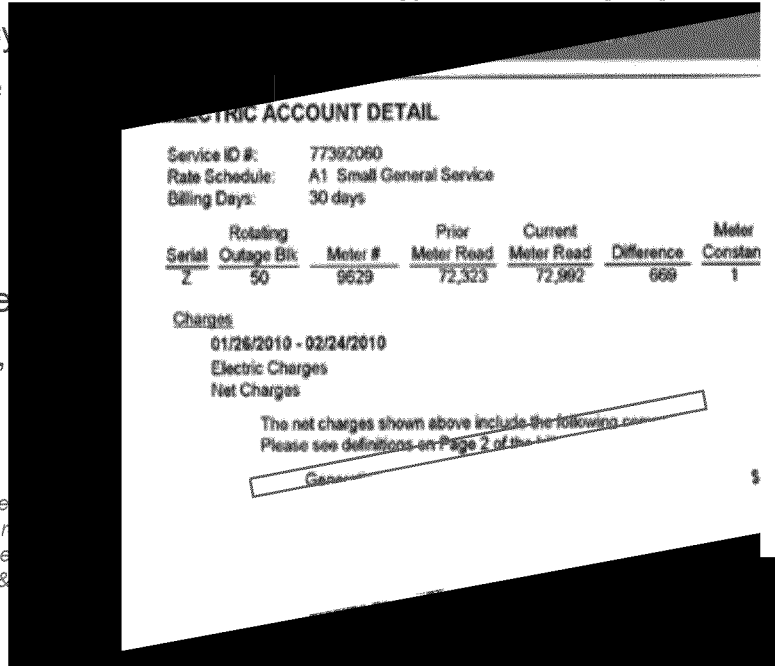
And in the future, we expect our rates will continue to be lower than those PG&E charges.

That's because as more and more clean energy becomes available in the marketplace, the price for that energy drops.

As Marin Clean Energy increases the amount of renewable energy we provide, we will reduce the amount we get from sources like natural gas, whose prices are far more volatile and subject to price spiking.

And Marin Clean Energy sets rates locally so we can better tailor rates and programs to reflect our local energy needs, our geog-

*Marin Clean Energy power generation cost is included in your PG&E bill.*



2002

California legislature approves AB 117 authorizing local communities to join together in purchasing and supplying their own power

2004

The County of Marin, all Marin cities and two public water districts begin studying the formation of Marin Energy Authority

2005

Initial feasibility study completed in March

2006

More than a year of additional study and risk analysis is completed in May

2008

Business plan completed in April

# how it works

Following the same careful approach it took in developing the program over six years, Marin Clean Energy will be introduced in two phases spanning more than two years.

The first phase, beginning in early May 2010, includes a small number of residential, commercial and municipal customers. The second phase, beginning in late summer 2011, will include all remaining customers.

This phased approach allows Marin Clean Energy to ensure the program is operating effectively and meeting customers' needs. It also provides Marin Clean Energy time to design and introduce its own energy efficiency and other energy- and cost-saving programs for customers.

## marin clean Energy... renewable by choice

Customers can elect not to participate in Marin Clean Energy. Notices mailed to all customers during the service start-up period provide instructions for how to opt out.

Customers who opt out may be prohibited by PG&E from re-entering Marin Clean Energy for three years.

2008

Following months of public meetings and hearings, the County and eight cities agree to form the Marin Energy Authority in December

2009

The Marin Energy Authority adopts its final Implementation Plan in December

2010

The Marin Energy Authority begins service in May

[www.MarinCleanEnergy.info](http://www.MarinCleanEnergy.info)



3501 CIVIC CENTER DRIVE, #308  
SAN RAFAEL, CA 94903

FRSRT STD  
U.S. POSTAGE  
PAID  
North Bay, CA  
Permit 194

# marin clean energy

## cleaner power

FOR MORE INFORMATION REGARDING MARIN CLEAN ENERGY, including meeting schedules and agendas, documents, and frequently asked questions, please visit our website [www.MarinCleanEnergy.info](http://www.MarinCleanEnergy.info)

*For general questions or to schedule a presentation about Marin Clean Energy please contact:*

Jordis Witter Weaver  
marin Energy Authority  
415-473-6624 or [jweaver@co.marin.ca.us](mailto:jweaver@co.marin.ca.us)

***For technical questions, please contact:***

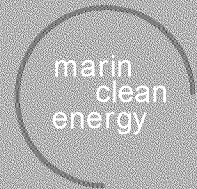
Dawn Weisz, Interim Director  
marin Energy Authority  
[dweisz@co.marin.ca.us](mailto:dweisz@co.marin.ca.us)

***For policy or governance questions please contact:***

Charles McGlashan, chair  
marin Energy Authority  
[cmcglashan@co.marin.ca.us](mailto:cmcglashan@co.marin.ca.us)

Shawn Marshall, vice chair  
marin Energy Authority  
[shawnmarshall@comcast.net](mailto:shawnmarshall@comcast.net)

design | [kiki@descomstudios.com](mailto:kiki@descomstudios.com) 204-5100-03



[www.MarinCleanEnergy.info](http://www.MarinCleanEnergy.info)