

**BEFORE THE PUBLIC UTILITIES COMMISSION  
OF THE STATE OF CALIFORNIA**

Application of Southern California Edison	)	
Company (U 338-E) for Approval of its 2009-	)	Application A.08-07-021
2011 Energy Efficiency Program Plans and	)	(Filed July 21, 2008)
Associated Public Goods Charge (PGC) and	)	
Procurement Funding Requests.	)	
_____	)	
	)	Application 08-07-022
	)	Application 08-07-023
And Related Matters.	)	Application 08-07-031
_____	)	(Filed July 21, 2008)

**NOTICE OF EX PARTE COMMUNICATION OF SAN DIEGO GAS & ELECTRIC  
COMPANY (U902M) AND SOUTHERN CALIFORNIA GAS COMPANY (U904G)**

Steven D. Patrick  
*Attorney for*  
**SAN DIEGO GAS & ELECTRIC COMPANY and**  
**SOUTHERN CALIFORNIA GAS COMPANY**  
555 W. Fifth Street, Suite 1400  
Los Angeles, CA 90013-1046  
Phone: (213) 244-2954  
Fax: (213) 629-9620  
E-Mail: [SDPatrick@semprautilities.com](mailto:SDPatrick@semprautilities.com)

December 15, 2010



To request a copy of this notice, please contact:

Cindy Zammit  
601 Van Ness Avenue, Suite 2060  
San Francisco, CA 94102  
Telephone: (415) 202-9986  
Facsimile: (415) 346-3630  
Email: [czammit@semprautilities.com](mailto:czammit@semprautilities.com)

Dated this 15<sup>th</sup> day of December, 2010.

Respectfully submitted,

*/s/ Steven D. Patrick*

---

Steven D. Patrick *for*

Pedro Villegas  
Manager, Regulatory Relations  
**SAN DIEGO GAS & ELECTRIC COMPANY and  
SOUTHERN CALIFORNIA GAS COMPANY**  
601 Van Ness Avenue, Suite 2060  
San Francisco, CA 94102  
Telephone: (415) 346-3215  
Facsimile: (415) 346-3630  
Email: [PVillegas@semprautilities.com](mailto:PVillegas@semprautilities.com)

# ATTACHMENT

**Munoz, Marivel**

---

**From:** Villegas, Pedro  
**Sent:** Friday, December 10, 2010 10:58 AM  
**To:** 'Tisdale, Matthew'  
**Cc:** hoovermr@sce.com; Michael.Hoover@sce.com  
**Subject:** A.08-07-021: Proposed Custom Measures Process Flow Chart  
**Attachments:** SEU SCE Custom Flow Diagram 12-10-10.pdf

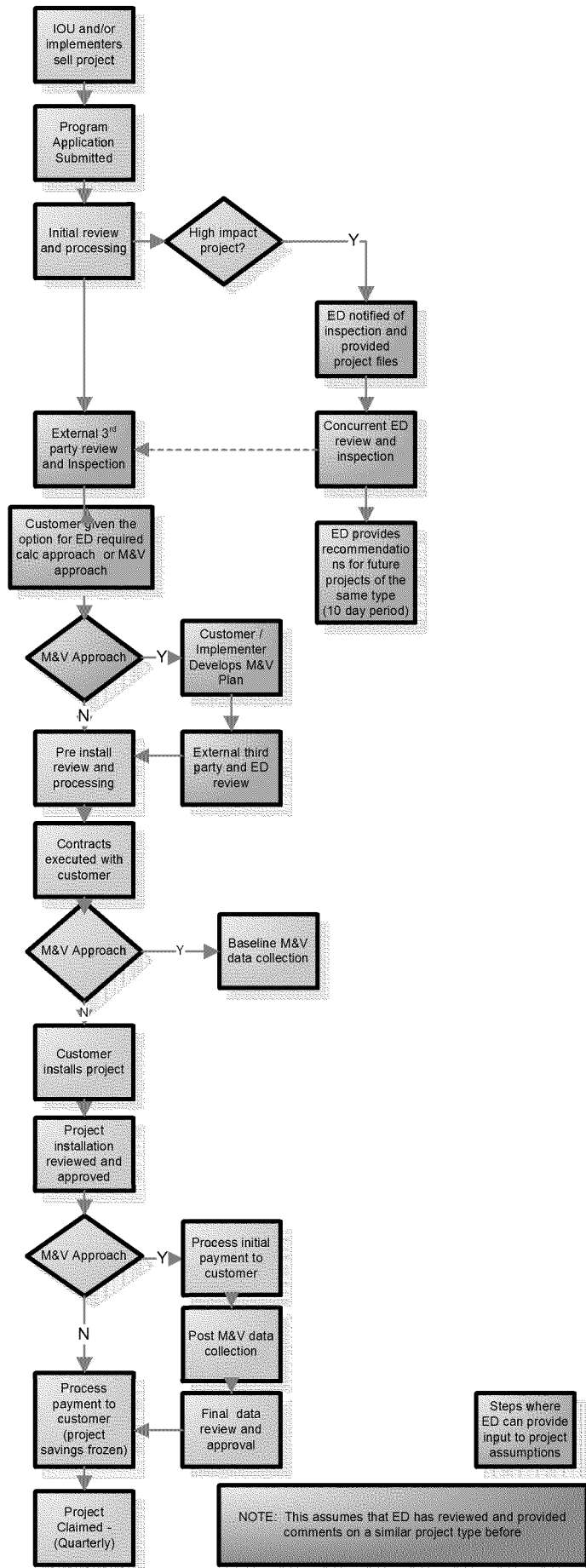
Matthew:

Attached is a joint Sempra Utilities-Southern California Edison proposed flow chart for the custom measures process under discussion in A.08-07-021 *et al.*

Best,  
Pedro

*Pedro Villegas  
Manager of Regulatory Relations  
Sempra Energy Utilities  
601 Van Ness Avenue, Suite 2060  
San Francisco, California 94102-6316  
Telephone: 415-202-9986*

# DRAFT PROPOSED CUSTOMIZED SOLUTION PROCESS





## CALIFORNIA PUBLIC UTILITIES COMMISSION

**Service Lists: A.08-07-021,022,023 and 031– Last Changed: December 10, 2010**

nlong@nrdc.org; andrew.mcallister@energycenter.org; dgilligan@naesco.org;  
ddayton@cleanenergysol.com; sesco@optonline.net; keith.mccrea@sutherland.com;  
mharrigan@ase.org; adam@agp-llc.com; michael@opower.com; jimross@r-c-s-inc.com;  
rockybacchus@gmail.com; gtropsa@ice-energy.com; Cynthiakmitchell@gmail.com;  
SDPatrick@SempraUtilities.com; mparsons@mwdh2o.com; nkarno@yahoo.com;  
thamilton@icfi.com; pwuebben@aqmd.gov; larry.cope@sce.com; monica.ghattas@sce.com;  
liddell@energyattorney.com; dmano@enalsys.com; etaylor@enalsys.com; mlewis@ctg-  
net.com; mike.rogers@greenhomesamerica.com; judi.schweitzer@post.harvard.edu;  
rscott@cheers.org; dale@betterbuildings.com; wilkinson@es.ucsb.edu; pcanessa@charter.net;  
mtierney-lloyd@enernoc.com; JeffreyH@hellermanus.com; RemiT@hellermanus.com;  
dil@cpuc.ca.gov; jeanne.sole@sfgov.org; william.sanders@sfgov.org; bfinkelstein@turn.org;  
hayley@turn.org; marcel@turn.org; mang@turn.org; steven@moss.net;  
jsqueri@goodinmacbride.com; edwardoneill@dwt.com; jimflanagan4@mac.com;  
saw0@pge.com; ssmyers@att.net; CJN3@pge.com; wbooth@booth-law.com; jak@gepllc.com;  
jerryl@abag.ca.gov; rknight@bki.com; jody\_london\_consulting@earthlink.net;  
hoerner@redefiningprogress.org; swentworth@oaklandnet.com; bking@quest-world.com;  
samk@greenlining.org; TWhite@homeenergy.org; john@proctoreng.com;  
pmschwartz@sbcglobal.net; tim@marinemt.org; wem@igc.org; hankryan2003@yahoo.com;  
bhines@svlg.net; Rob@ConSol.ws; jweil@aglet.org; bill@jbsenergy.com;  
elee@davisenergy.com; mike@calcerts.com; burtt@macnexus.org;  
rnichols@navigantconsulting.com; tcrooks@mcr-group.com; eemblem@3eintinc.net;  
mboccardo@dolphingroup.org; chris@cuwcc.org; glw@eslawfirm.com; jparks@smud.org;  
ljimene@smud.org; bmatulich@egia.com; cscruton@energy.state.ca.us; kmills@cxfb.com;  
rob@clfp.com; steve@greenplumbersusa.com; js@clearedgepower.com; tom@ucons.com;  
ABesa@SempraUtilities.com; achang@efficiencycouncil.org; WBlattner@SempraUtilities.com;  
clamasbabbini@comverge.com; cassandra.sweet@dowjones.com; elvine@lbl.gov;  
gstaples@mendotagroup.net; HYao@SempraUtilities.com; jared@efficiencyfirst.org;  
john@enactenergy.com; lettenson@nrdc.org; mwbeck@lbl.gov;  
PVillegas@SempraUtilities.com; sschiller@efficiencycouncil.org; tam.hunt@gmail.com;  
tglassey@certichron.com; cpuc@certichron.com; mrw@mrwassoc.com;  
ashley.watkins@energycenter.org; EGrizard@deweysquare.com; pstoner@lgc.org;  
irene.stillings@energycenter.org; jennifer.porter@energycenter.org;  
mokeefe@efficiencycouncil.org; puja@opower.com; rekl@pge.com;  
sephra.ninow@energycenter.org; sbarata@opiniondynamics.com; gandhi.nikhil@verizon.net;  
ameliag@ensave.com; Clark.Pierce@us.landisgyr.com; wjp4@bpconsulting.org;  
CCole@currentgroup.com; emily.hallett@positiveenergy.com; sean.harrington@opower.com;  
staples@staplesmarketing.com; mking@staplesmarketing.com; nphall@tecmarket.net;  
skihm@ecw.org; annette.beitel@gmail.com; jmeyers@naima.org; pjacobs@buildingmetrics.biz;  
bbarkett@summitblue.com; bobbi.sterrett@swgas.com; emello@sppc.com;  
David.Pettijohn@ladwp.com; bmcdonnell@mwdh2o.com; KWong@SempraUtilities.com;  
KShore@SempraUtilities.com; gclayborn@gmail.com; nhernandez@isd.co.la.ca.us;  
kecia.davison@csgroup.com; scott.bowman@csgroup.com; david@nemtzw.com;  
susan.munves@smgov.net; jcluboff@lmi.net; jack.rosenthal@p2seng.com;  
brad.bergman@intergycorp.com; southlandreports@earthlink.net; cyin@yinsight.net;



twayne@roadrunner.com; sculbertson@icfi.com; don.arambula@sce.com; tory.weber@sce.com; devon@hartmanbaldwin.com; Case.Admin@sce.com; Jennifer.Shigekawa@sce.com; Laura.Genao@sce.com; dwood8@cox.net; rsperberg@onsitenergy.com; Elizabeth.DeSouza@csgroup.com; CentralFiles@SempraUtilities.com; CentralFiles@SempraUtilities.com; JYamagata@SempraUtilities.com; bob.ramirez@itron.com; rachel.harcharik@itron.com; david.gordon@efm-solutions.com; kjk@kjkammerer.com; LukeH@enalsys.com; cneedham@edisonmission.com; cperkins@energycoalition.org; TFlanigan@EcoMotion.us; sthompson@ci.irvine.ca.us; mlong@anaheim.net; cheryl.collart@ventura.org; Jeff.Hirsch@DOE2.com; dmatson@co.santa-barbara.ca.us; hhuerta@rhainc.com; pk@utilitycostmanagement.com; atencate@rsgrp.com; lcasentini@rsgrp.com; jcelona@sbcglobal.net; ann.kelly@sfgov.org; bruce.foster@sce.com; matt@sustainablespaces.com; norman.furuta@navy.mil; eric@ethree.com; jchou@nrdc.org; kgrenfell@nrdc.org; rlauman@ecosconsulting.com; andrew\_meiman@newcomb.cc; ann\_mccormick@newcomb.cc; efm2@pge.com; yxg4@pge.com; John\_Newcomb@newcomb.cc; filings@a-klaw.com; magnuson.leif@epa.gov; lhj2@pge.com; matt\_sullivan@newcomb.cc; mpa@a-klaw.com; nes@a-klaw.com; sls@a-klaw.com; tmfry@nexant.com; aliddell@icfi.com; mgo@goodinmacbride.com; sdhilton@stoel.com; policy.solutions@comcast.net; cem@newsdata.com; lisa\_weinzimer@platts.com; Mike@pge.com; slda@pge.com; SRRd@pge.com; wmcguire@fypower.org; bkc7@pge.com; regrelcuccases@pge.com; jkz1@pge.com; rafi@pge.com; epetrill@epri.com; andrew.wood3@honeywell.com; sharon@emeter.com; kathleen.gaffney@kema.com; elowe@barakatconsulting.com; tlmurray@earthlink.net; singh70@gmail.com; mistib@comcast.net; ashish.goel@intergycorp.com; grant.cooke@intergycorp.com; jay.bhalla@intergycorp.com; rfox@intergycorp.com; sbeserra@sbcglobal.net; ghamilton@gepllc.com; michael.cheng@paconsulting.com; cadickerson@cadconsulting.biz; alex.kang@itron.com; Ann.Peterson@itron.com; jennifer.fagan@itron.com; jtiffany@ase.org; john.cavalli@itron.com; brbarkovich@earthlink.net; fred.coito@kema.com; jenna.canseco@us.kema.com; Karin.Corfee@kema.com; Bruce@BuildItGreen.org; awatson@quest-world.com; robertg@greenlining.org; jskromer@qmail.com; craigtyler@comcast.net; darmanino@co.marin.ca.us; michele@boggis.com; rita@ritanortonconsulting.com; gthomas@ecoact.org; emahlon@ecoact.org; michael@ecoact.org; mary.tucker@sanjoseca.gov; NancyKRod@conSol.ws; bobho@mid.org; joyw@mid.org; gsenergy@sonoma-county.org; tconlon@geopraxis.com; garrick@jbsenergy.com; bmfinklor@ucdavis.edu; rmccann@umich.edu; mbhunt@ucdavis.edu; mgillette@enernoc.com; dmahone@h-m-g.com; kenneth.swain@navigantconsulting.com; kdusel@navigantconsulting.com; owen\_howlett@h-m-g.com; lpark@navigantconsulting.com; david.reynolds@ncpa.com; scott.tomashefsky@ncpa.com; asloan@rs-e.com; mclaughlin@braunlegal.com; dgeis@dolphingroup.org; ehebert@energy.state.ca.us; jcastleberry@rs-e.com; wynne@braunlegal.com; klewis@energy.state.ca.us; mharcos@rs-e.com; rsapudar@energy.state.ca.us; bernardo@braunlegal.com; lmh@eslawfirm.com; vwood@smud.org; jane@autocell.net; richard@autocell.net; wwester@smud.org; rmowris@earthlink.net; hgilpeach@scanamerica.net; Dbjornskov@peci.org; paul.notti@honeywell.com; brian.hedman@cadmusgroup.com; Sami.Khawaja@cadmusgroup.com; janep@researchintoaction.com; 9watts@gmail.com; samsirkin@cs.com; mbaker@sbwconsulting.com; jholmes@emil.com; jbazemore@emil.com; CBE@cpuc.ca.gov; JL2@cpuc.ca.gov; TRH@cpuc.ca.gov; ppl@cpuc.ca.gov; atr@cpuc.ca.gov;

aeo@cpuc.ca.gov; cfl@cpuc.ca.gov; cxc@cpuc.ca.gov; crv@cpuc.ca.gov; dmg@cpuc.ca.gov;  
hcf@cpuc.ca.gov; cln@cpuc.ca.gov; jst@cpuc.ca.gov; jnc@cpuc.ca.gov; jdr@cpuc.ca.gov;  
jci@cpuc.ca.gov; keh@cpuc.ca.gov; kmb@cpuc.ca.gov; ks3@cpuc.ca.gov; lp1@cpuc.ca.gov;  
mmw@cpuc.ca.gov; mkh@cpuc.ca.gov; pcf@cpuc.ca.gov; snr@cpuc.ca.gov; seb@cpuc.ca.gov;  
srm@cpuc.ca.gov; tex@cpuc.ca.gov; tcr@cpuc.ca.gov; zap@cpuc.ca.gov; ztc@cpuc.ca.gov;  
awp@cpuc.ca.gov; crogers@energy.state.ca.us; agarcia@energy.state.ca.us;  
msherida@energy.state.ca.us; sbender@energy.state.ca.us; pbarthol@energy.state.ca.us;  
mulloa@semprautilities.com; luluw@newsdata.com; centralfiles@semprautilities.com;  
mmunoz@semprautilties.com

DON MEEK  
10949 SW 4<sup>TH</sup> Avenue  
Portland, OR 97219

THOMAS L. TRIMBERGER  
City of Rancho Cordova  
2729 Prospect Park Drive  
Rancho Cordova, CA 95670

SAMARA RASSI  
Fellon-McCord & Associates  
9960 Corporate Campus Drive, Suite 2500  
Louisville, KY 40223-4055

Division of Water & Audits  
505 Van Ness Avenue, Room 3106  
San Francisco, CA 94102

DENNIS HERRERA  
City & County of San Francisco  
City Hall, Room 234  
San Francisco, CA 94102

STEPHEN A. S. MORRISON  
City & County of San Francisco  
City Hall, Room 234  
San Francisco, CA 94102