

Historic Energy Efficiency in California

CEC DAWG Meeting

Cynthia Mitchell, Principal
Energy Economics Inc. / Consultant to TURN
January 20, 2011

Fig. 1: CA Cumulative Energy GWh Savings: Utility EE Programs and Bldg. & Appliance Standards

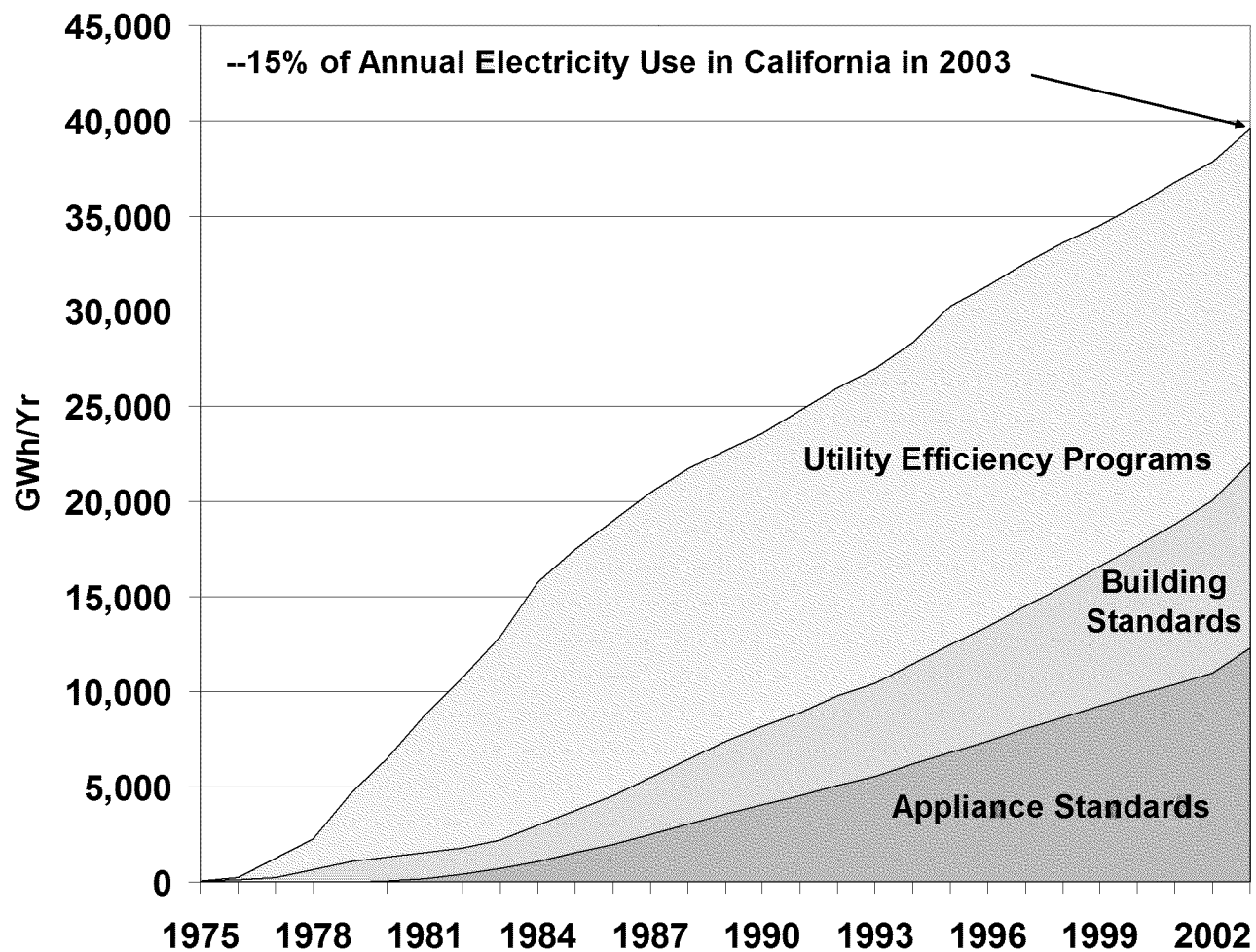


Fig. 2: Per Capita Electricity Use in the U.S. and CA: 1960-2004

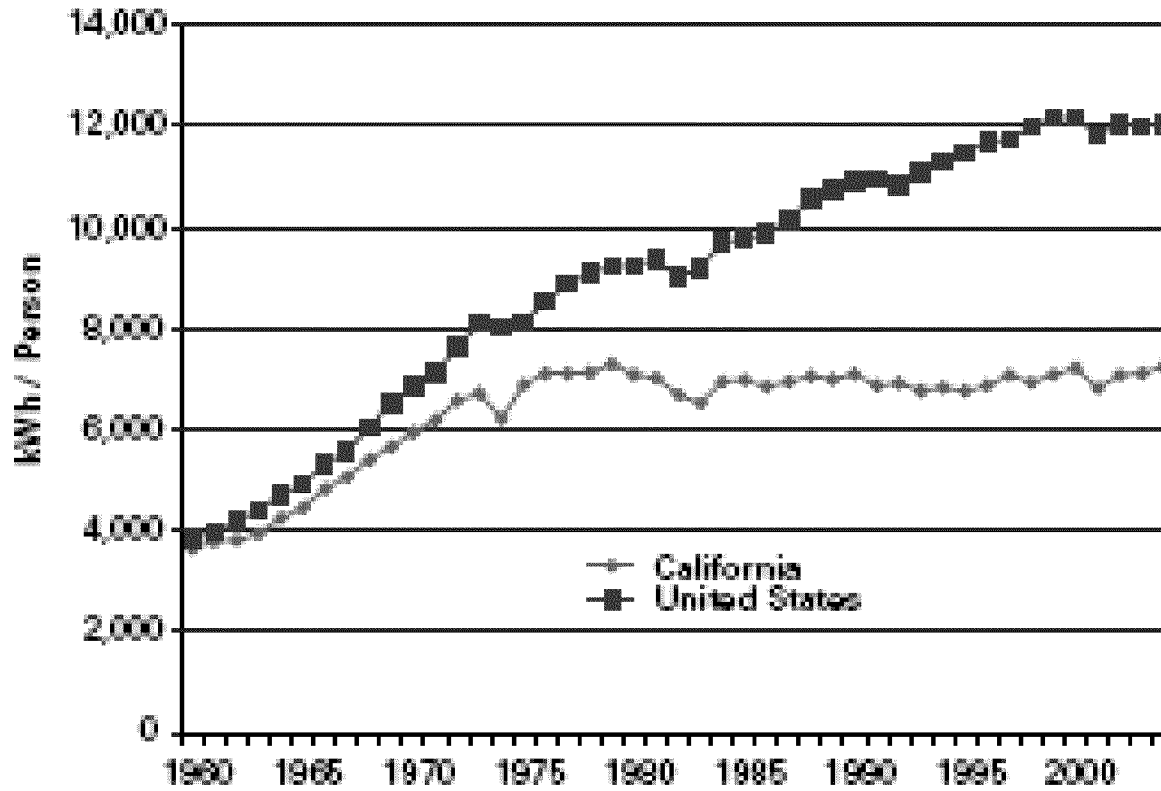


Fig. 4: Change in CA Per Capita Res Electricity Consumption vs. Change in CA Price of Res Electricity: 1970-2004

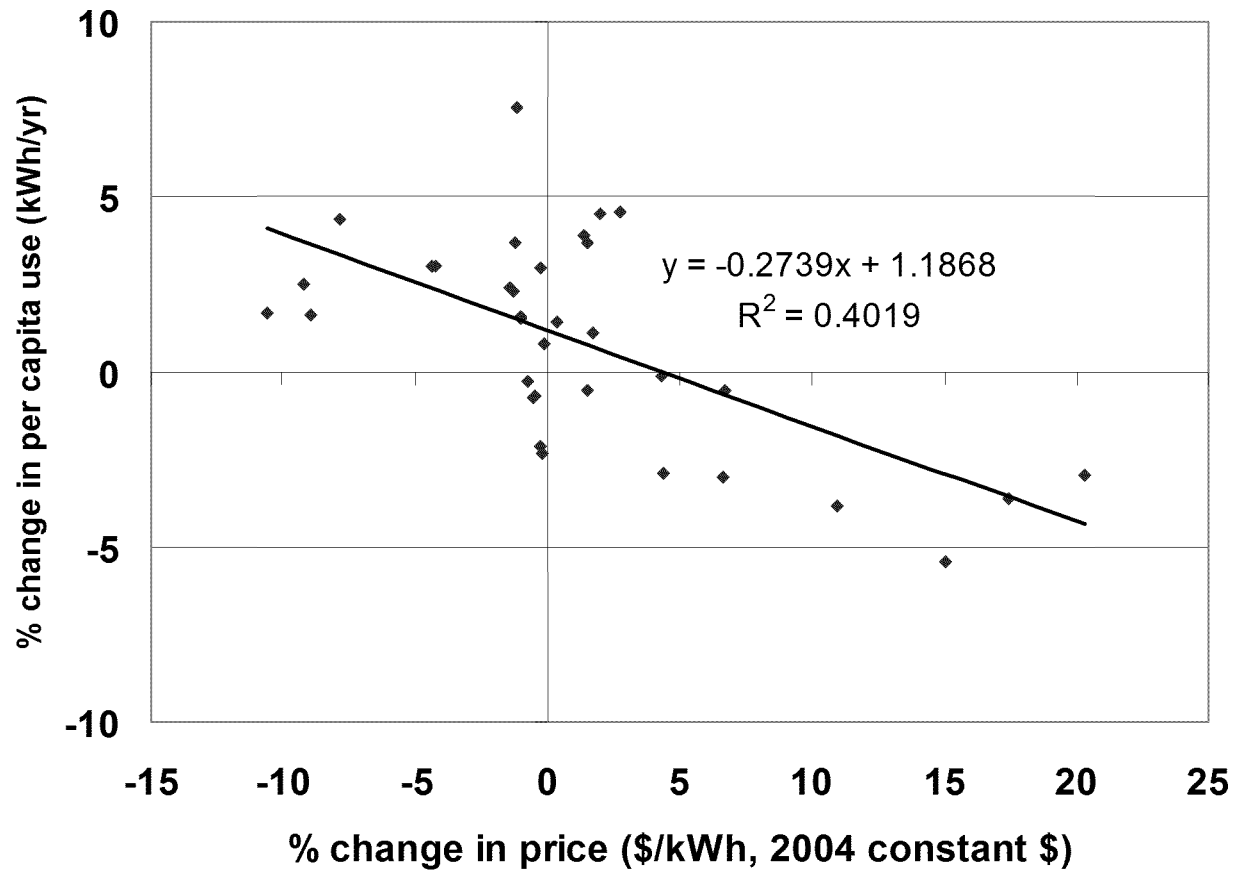


Fig. 5: Change in CA Per Capita Res Elec.
Consumption and Change in
CA Price of Res. Elec.: 1970-2004

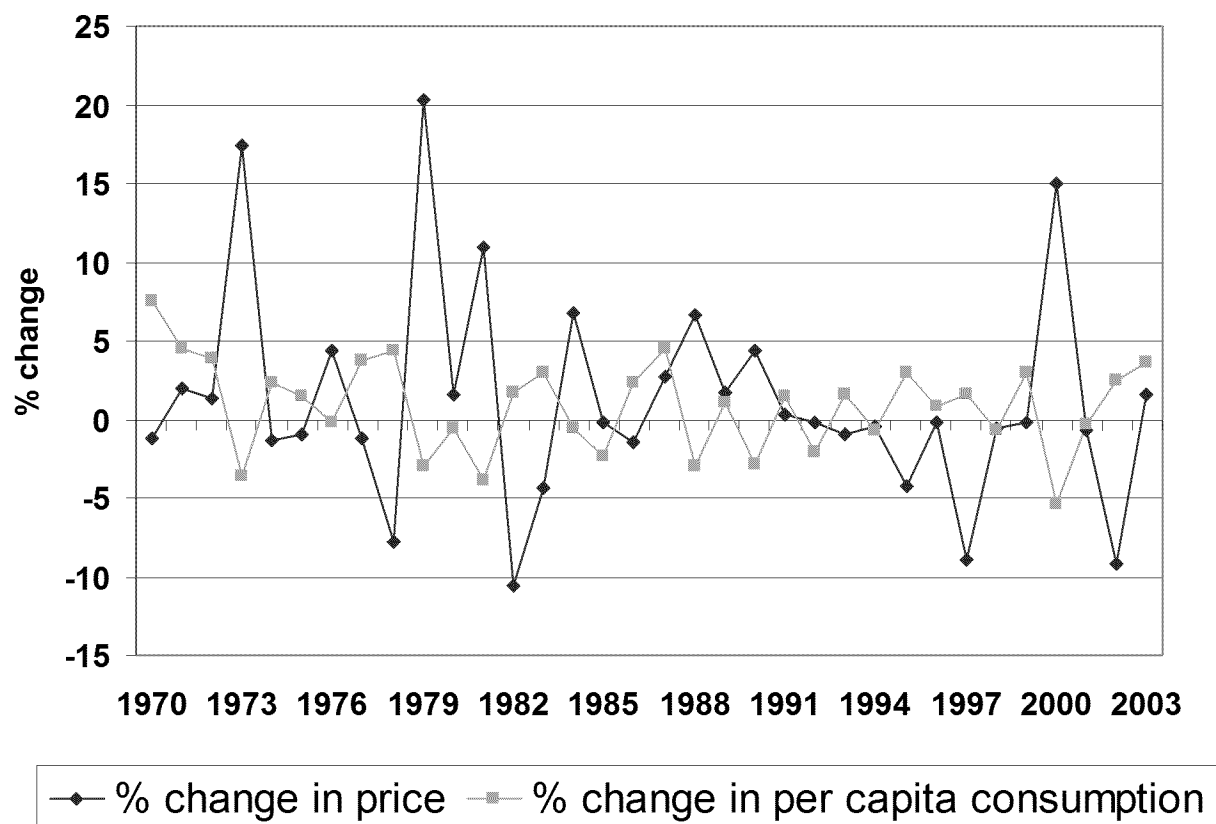


Fig. 6: Per Capita Res Elec Consumption and Price of Res Elec 2004 by State

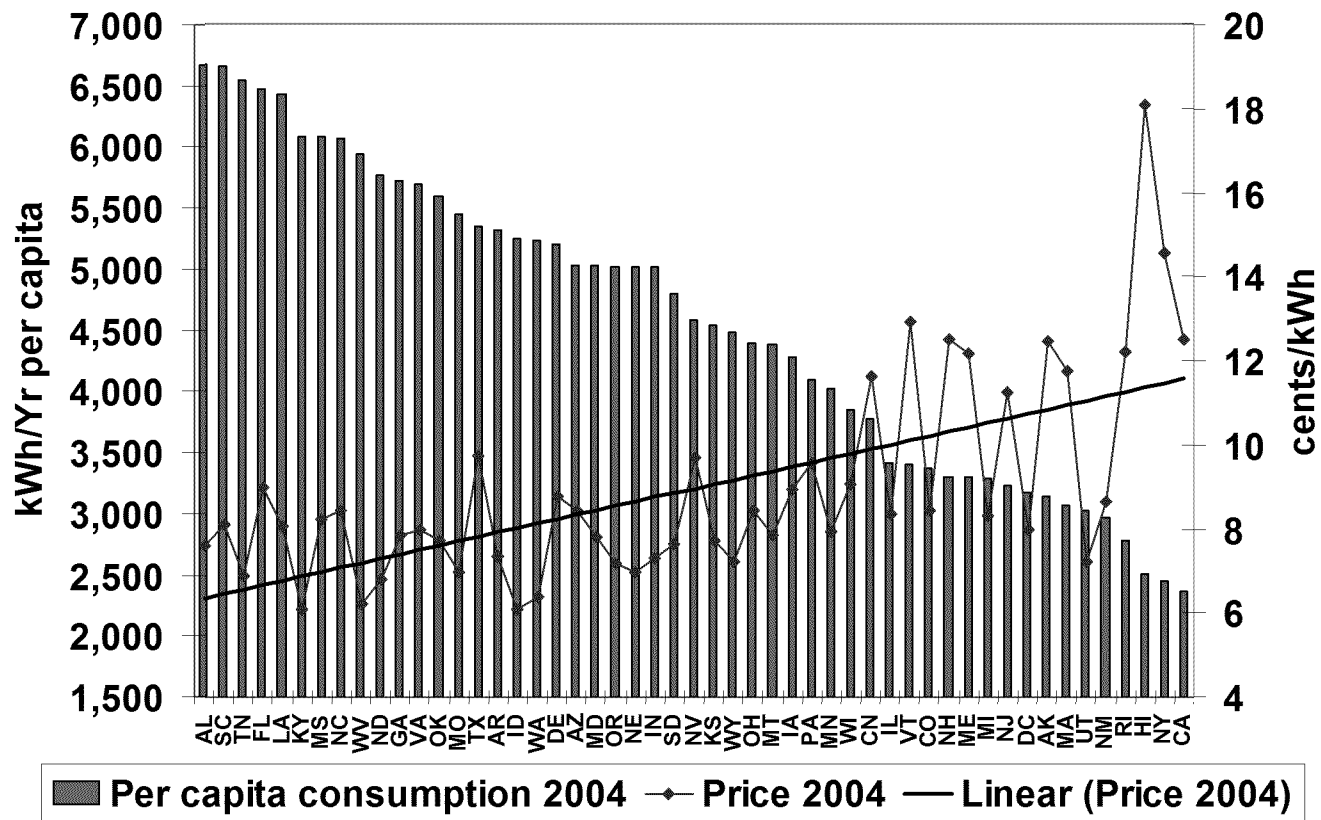


Fig. 7: Per Capita Consumption of Res Electricity in CA vs. Cooling Degree Days for the Pacific Region: 1969-2003

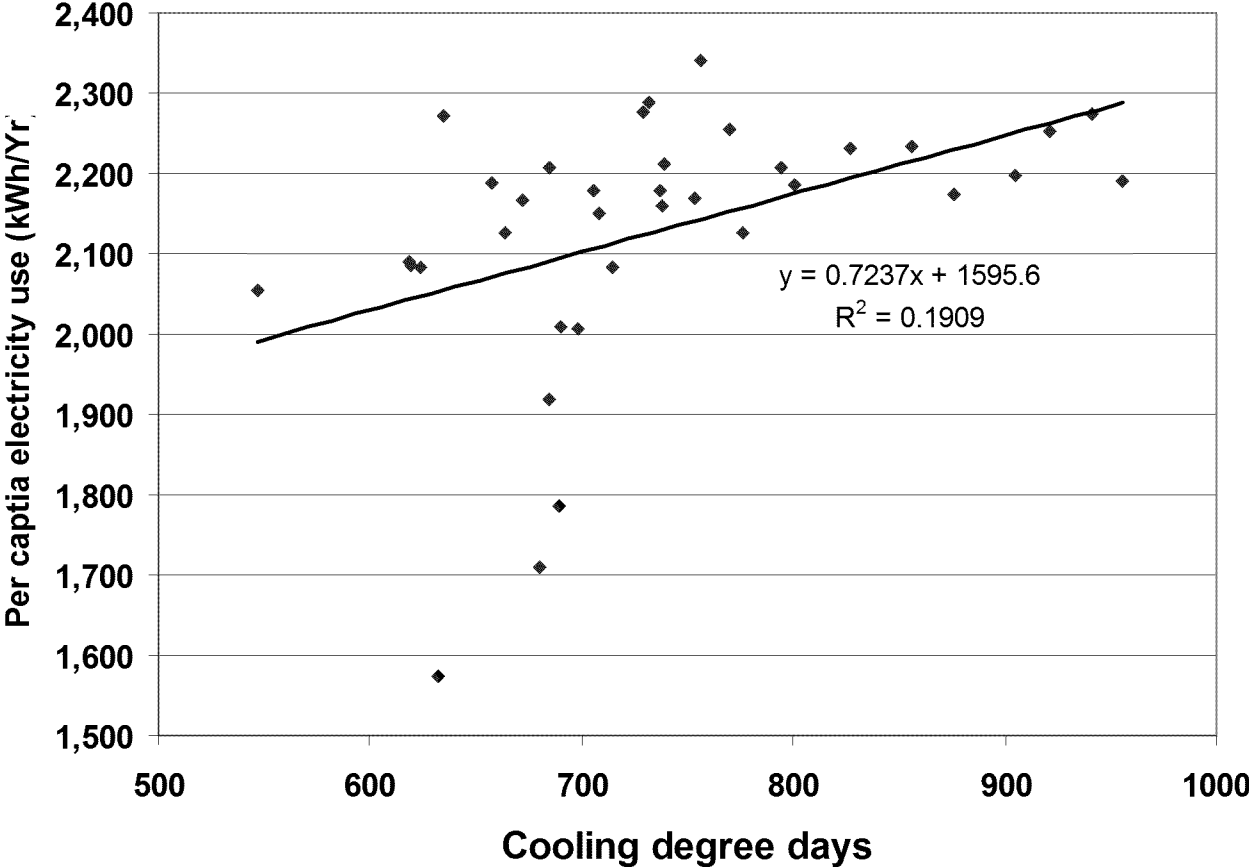


Fig. 8: Average HH Size in CA and the US: 1970-2004

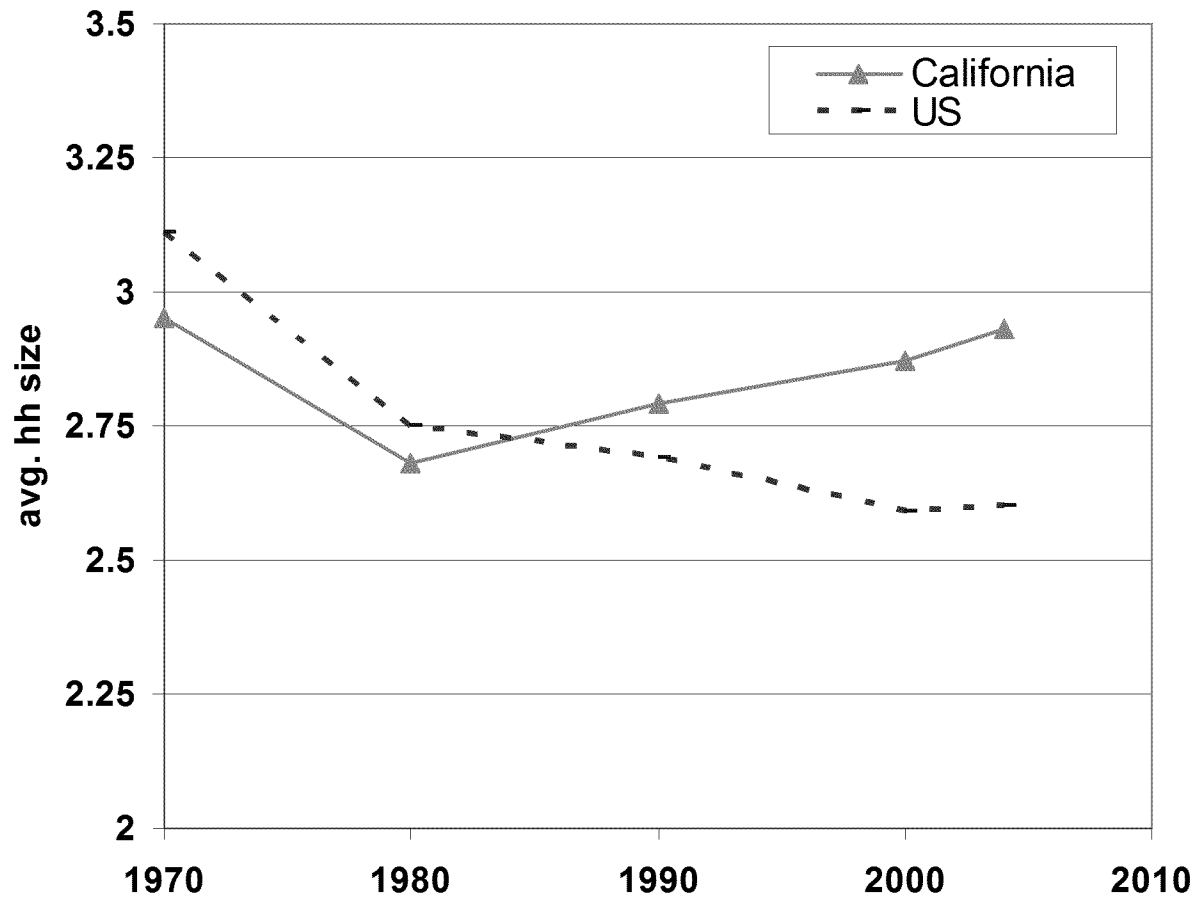


Fig. 9: Multi-Family and Attached Housing as a % of Total Housing Units

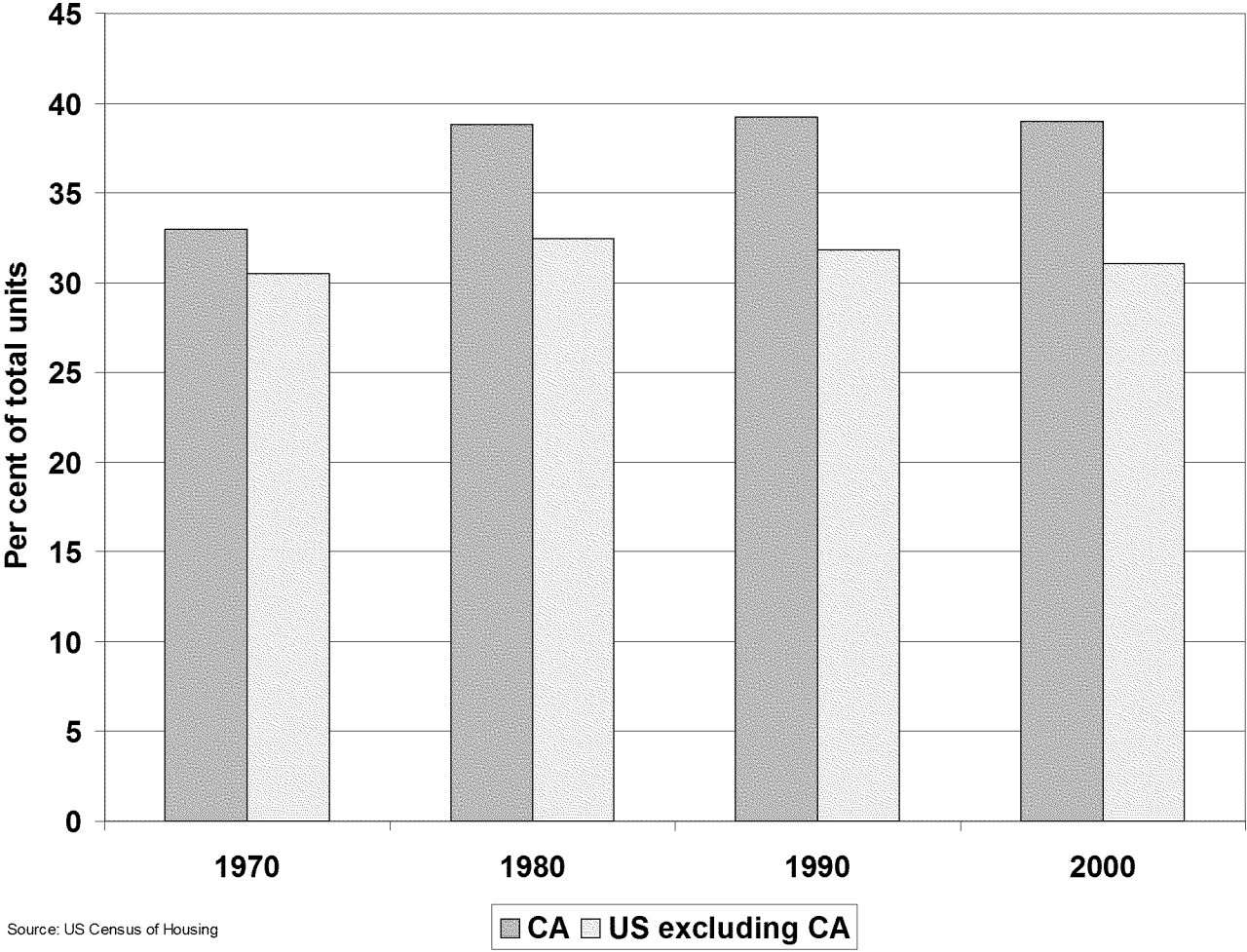


Fig. 10: Percent of Households Reporting That They Lower Winter Temperature Settings, 2001

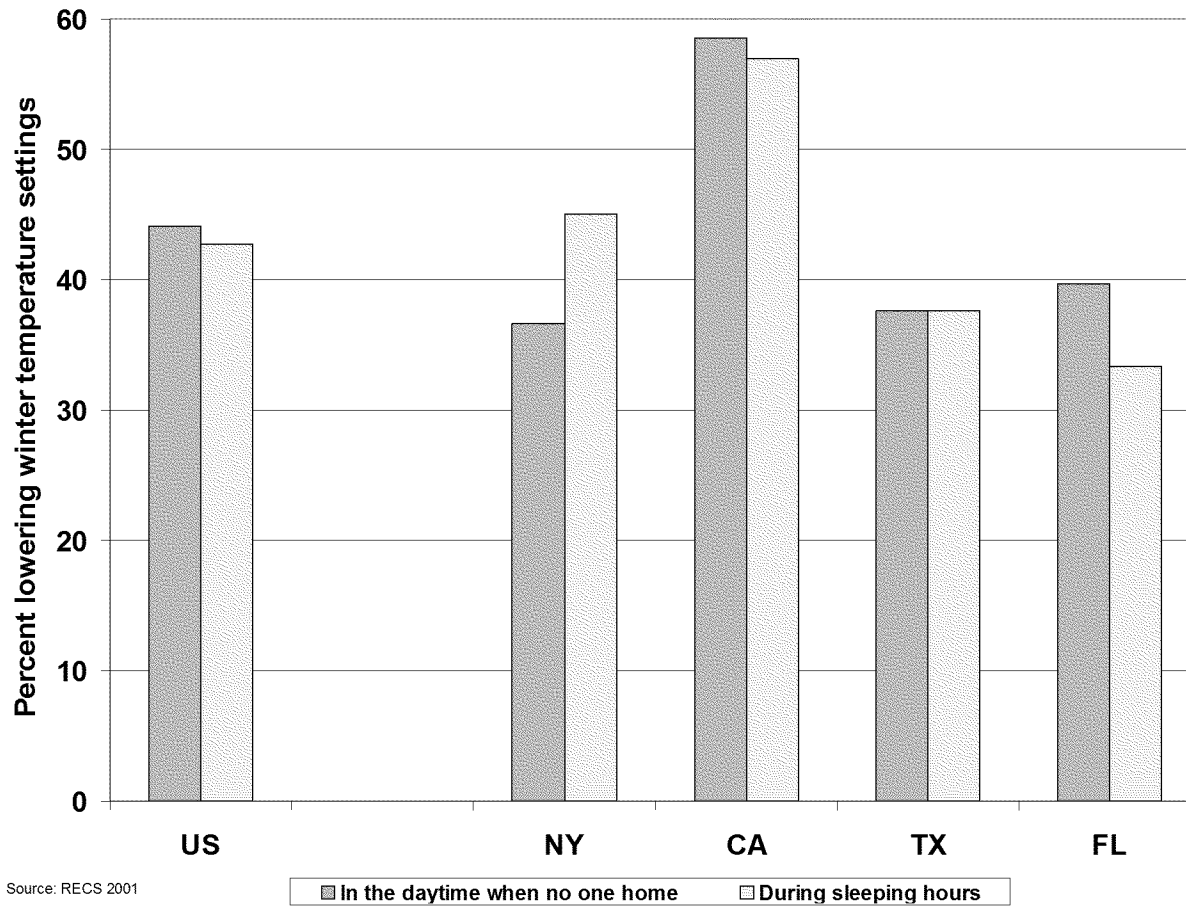


Fig. 11: Energy-Intensive Industries as a % of Manufacturing GDP/GSP: 2005

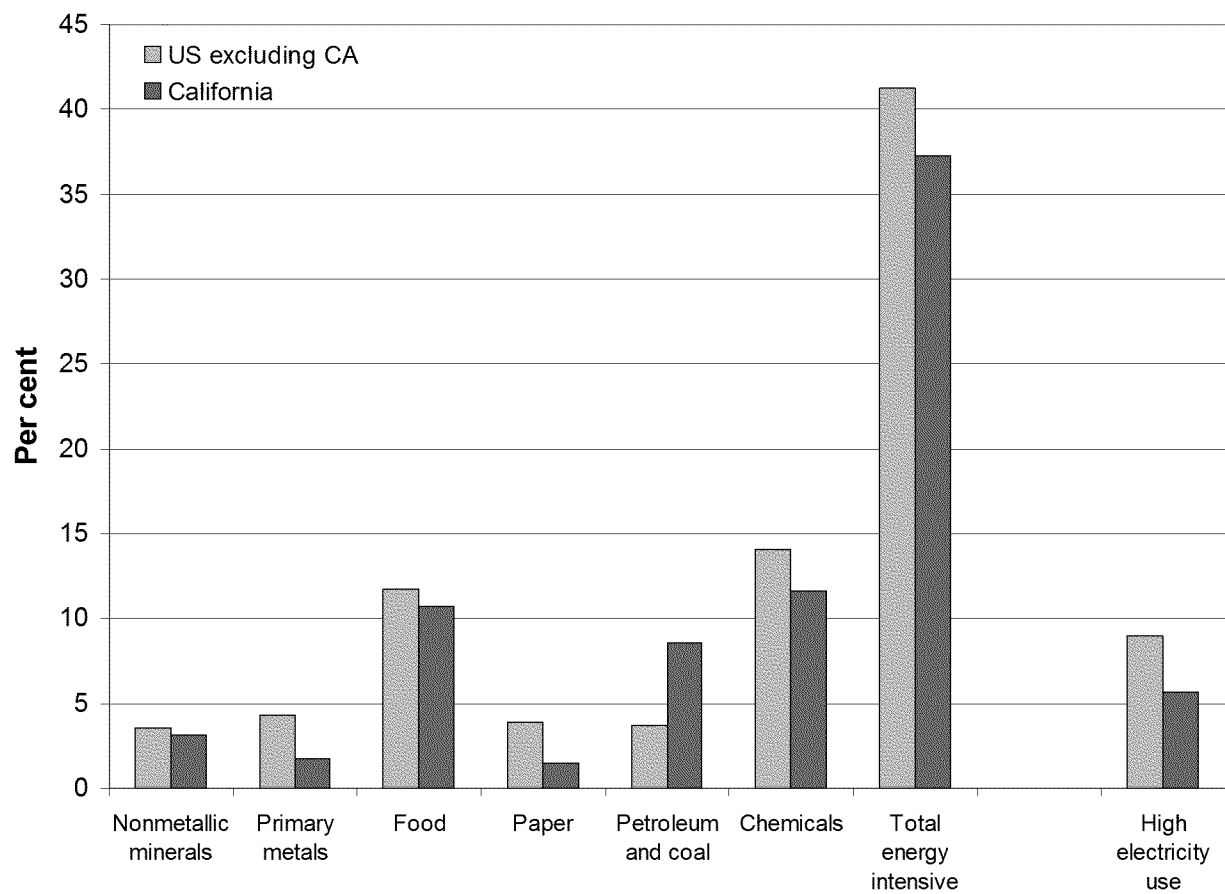


Fig. 12: Energy Intensive Industries as % of Total Manufacturing Employment: 2005

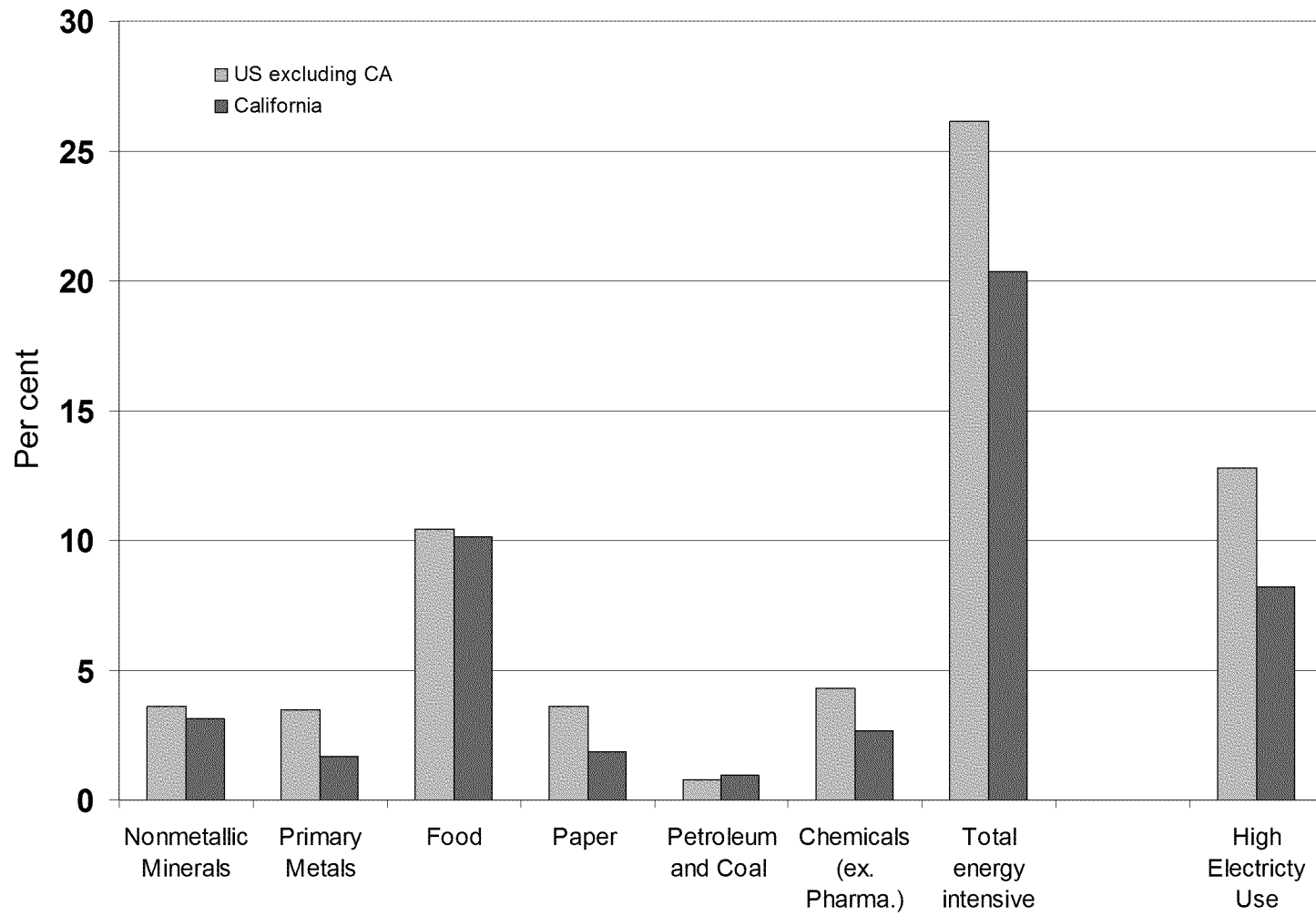


Fig. 13: CA Cumulative Energy GWh Savings: Utility EE Programs and Bldg. & Appliance Standards

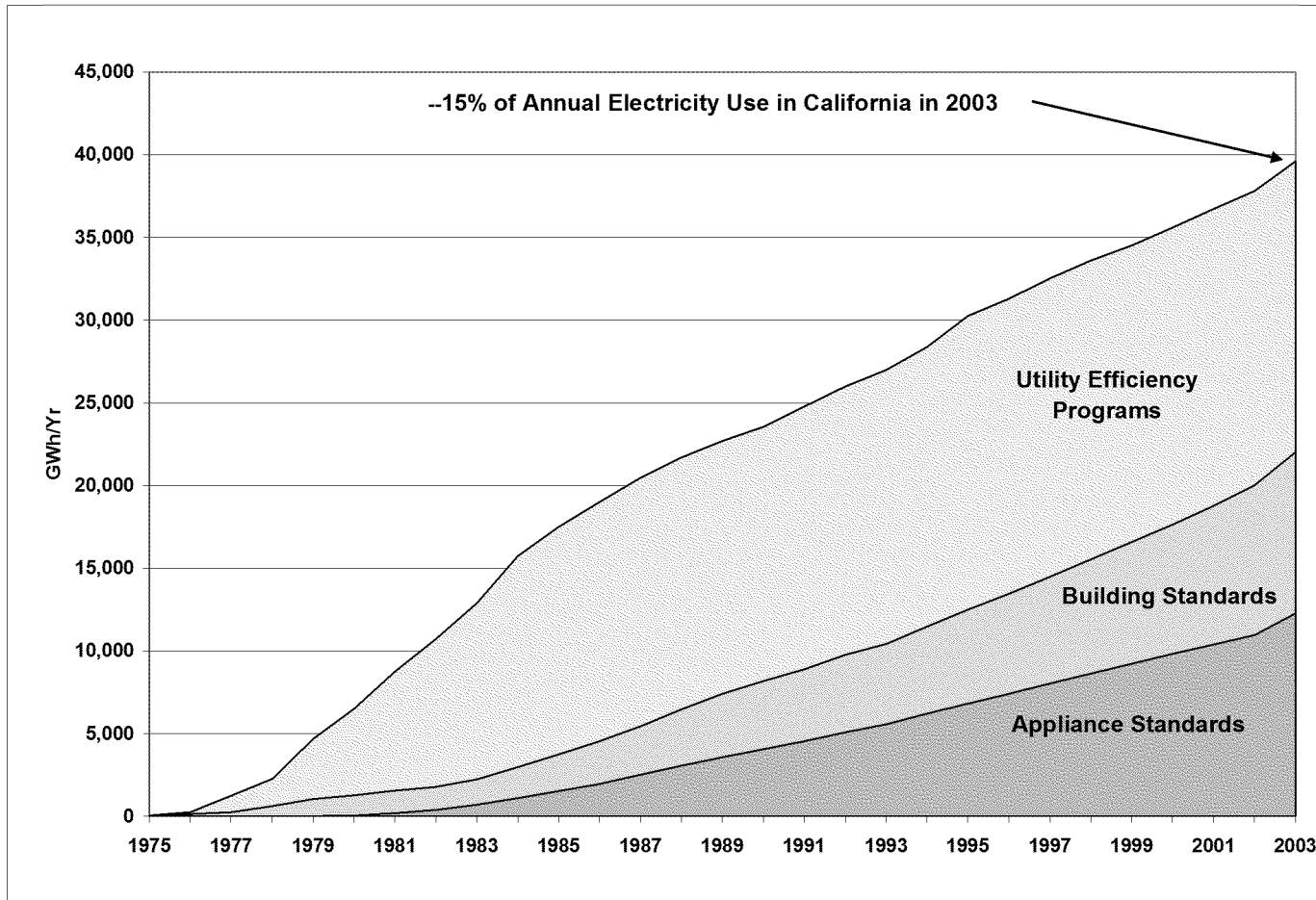


Fig. 12: Re-ordered CA Cumulative Energy GWh Savings: Utility EE Programs and Standards

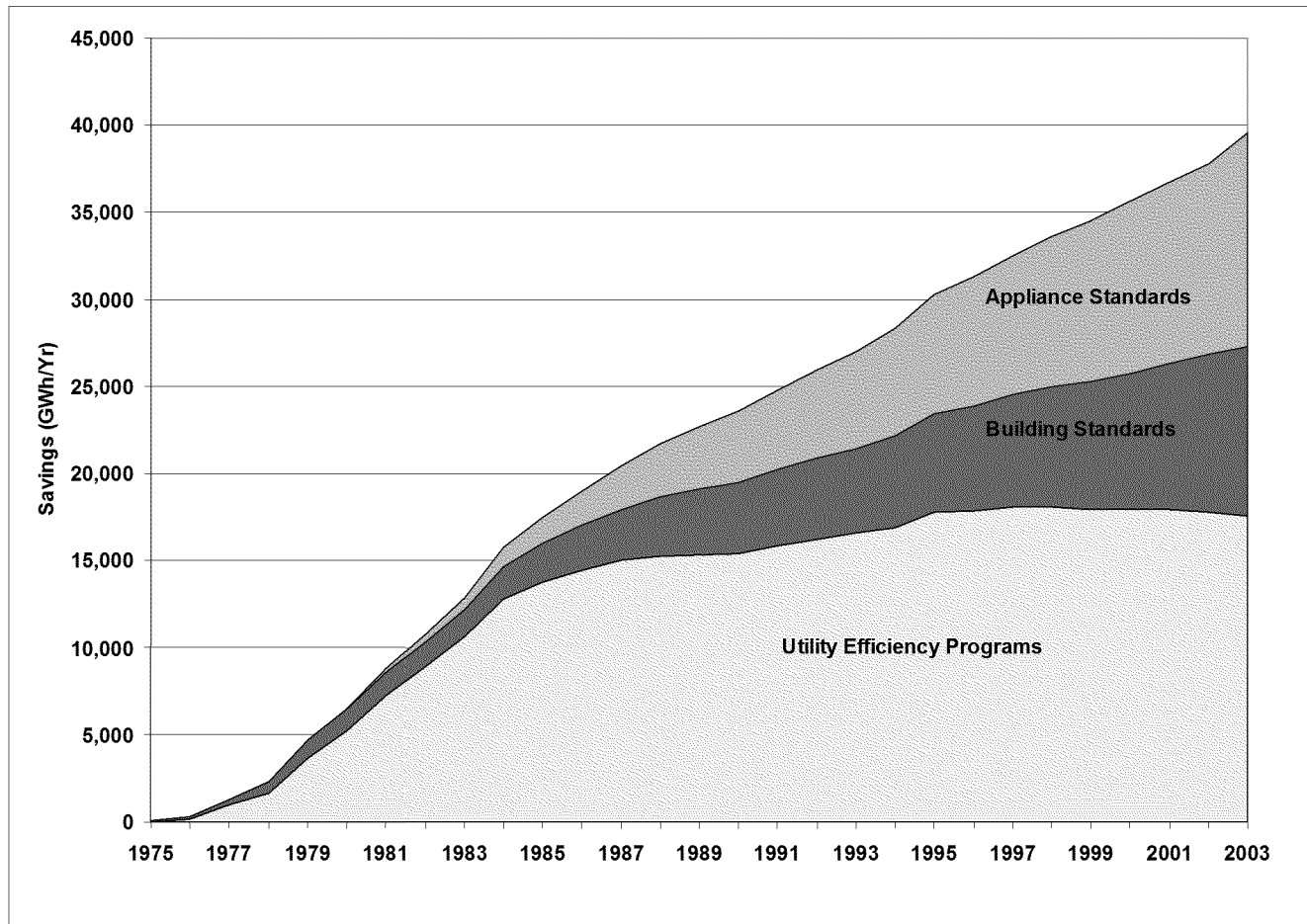
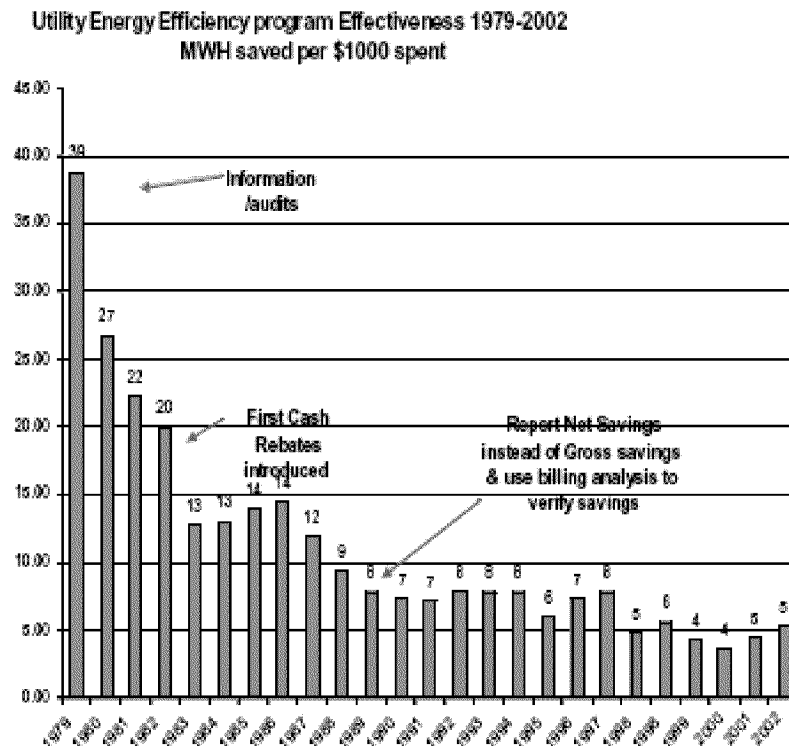


Figure 5
Trends in Utility Energy Efficiency Program Effectiveness



The downward trend in Figure 5 can be explained by major changes in both the composition of energy efficiency programs and measurement methods over time. At the beginning of the cycle, most of the utility programs provided recommendations via audits and information booklets but did not provide funds to reduce the cost of measures. Throughout the 1980s the program mix shifted toward offering customer rebates for specific measures which as Figure 2 decreased the yield or kWh per dollar of program spending.