



PACIFIC LIGHTING Gas SUPPLY COMPANY
 720 WEST EIGHTH STREET LOS ANGELES 17, CALIFORNIA

Assoc. SM 15

INVOICE No. 7413

DATE SEPTEMBER 30, 1965

CUST. ORDER No. _____

P. O. 7 R51671

PACIFIC GAS AND ELECTRIC COMPANY

245 MARKET STREET
 SAN FRANCISCO, CALIFORNIA 94106

34" Bend at MP 3.48

TERMS: NET CASH



1 - **34" WELD ELL .497" W.**

SALES TAX

029990

811.47

~~\$750.00~~

30.00

~~\$780.00~~

809.97

73

Repl. 30" El. Line 101, Misco

PAID BY CHECK
 OCT 14 1965

588

KEYPUNCH DATA

LOCATION OR ITL.	ACCOUNT	PREFIX	JOB ORDER NUMBER	SUFFIX
<i>711</i>	<i>20</i>	<i>Am</i>	<i>162548</i>	<i>2</i>
SUPPLEMENTAL INFORMATION				
DIVISION			REFERENCE JOB	

Int 29.97

Line 101 MP 3.48

92077

MAOP 05334851 [I].ipg

SAN FRANCISCO 94105
401 FOLSOM ST.
EXEMPT 2-6255

PACIFIC PIPE CO.

PIPE - VALVES - FITTINGS

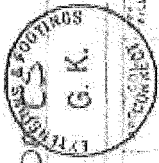
ORDER NO. 94607
20TH & CYPRESS ST.
ASTORIA

PG+E

245 MARKET ST
SAN FRANCISCO

SHIP TO HOLD FOR INSTR.

CONTACT MHCOS
SOL-4211



Redacted

INV. NO. 119

DATE SALES 9-10-65
CUSTOMER ORDER NO. 7250479
CUSTOMERS REG. NO.

SALESMAN JW
TERMS NET

QUAN.	ORD.	SHIP TO	BACK ORD.	SHIPPED	LIST	UNIT	DISC.	AMOUNT
1				1	675 ⁰⁰	ea	net	675 ⁰⁰
								703.50

36"x34" Conc Reducer
1625W TAPER TYPE 4'0"

LONG. 02-9990

36"x34" Reducer at MP 3.48

KEYPUNCH DATA

LOGAN ACCOUNT	JOB ORDER
718	NUMBER
813	SUFFIX
SUPPLEMENTAL INFORMATION	
DIVISION	REFERENCE JOB

203

APPROVED AS TO PRICE AND TERMS
NOV 17 1965

PURCHASING DEPT. - LINDA JONES
F/A

THIS IS AN ADDITION TO OUR
JOB 76727

131072

NO MERCHANDISE MAY BE RETURNED WITHOUT WRITTEN AUTHORIZATION. Claims for errors, shortages or defective material allowed unless made within 3 days after receipt of goods. No claims will be allowed for labor or expense required to replace defective goods. Interest will be charged on the cost of 8 per year per annum on all unpaid accounts. We hereby certify that the goods covered by this invoice were produced in compliance with all applicable requirements of the Fair Labor Standards Act as amended. If any action shall be brought to recover the purchase price of the merchandise described herein, Pacific Pipe Company shall be entitled to recover a reasonable attorney's fee in an amount to be fixed by the court.

SUB TOTAL 675.00
SALES TAX 2.70
TOTAL 702.80

REGISTER NO. 67894
TAKABLE
GOVERNMENT
INTERSTATE SALES TAX

INVOICE
DEC
RELEASED
1965

MAOP 05333133[1].jpg

L-101 MP 3.48

JOB#

155370

MAP 09027419 [I] JRG

Line 101 MP 348

INVOICE

M.I.M., INC.

150 So. L. JOCKNEY ST.
SAN JOSE, CALIF.

Sold To
[Handwritten name]
To
[Handwritten name]
[Handwritten address]

Shipped To
[Handwritten address]

<i>[Handwritten: 34" Sleeve at MP 3.48]</i>		<i>[Handwritten: 20]</i>		<i>[Handwritten: 174.00]</i>
<i>[Handwritten: 34" Sleeve at MP 3.48]</i>		<i>[Handwritten: 100]</i>		<i>[Handwritten: 7.12]</i>
<i>[Handwritten: 34" Sleeve at MP 3.48]</i>		<i>[Handwritten: 100]</i>		<i>[Handwritten: 185.12]</i>

OUR NUMBER
0010

DATE
[Handwritten: 9/19/63]

CUSTOMER'S ORDER
[Handwritten: 155370]

SALESMAN
[Handwritten: J. G. B.]

TERMS
F. O. B.

Rediff'm
7H 722

DATE RELEASED	AMOUNT	LOCATION ON ITEM	NO.	PRE. NUMBER	SUF.	DIV.	OF ENTRIES
960001	185.12	1101	1101	155370	1		

Redacted

[Handwritten: 10/22/61]

[Handwritten: 101 MP]

[Handwritten: ABOUT OVER THIS IS]

Redacted

[Handwritten: MP 3.48]

M.I.W., INC.
 755 N. MATHILDA AVE.
 SUNNYVALE, CALIF. 94086



OUR NUMBER 2771
DATE <i>10/17/65</i>
CUSTOMER'S ORDER <i>90993213</i>
SALESMAN
TERMS <i>(C)</i>
P. O. B.

Sold To

*P.H. & C. Co.
 100 Union*

Shipped To

36" Sleeve at MP 2.65

Address

<i>2</i>	<i>36" x 1/2" x 24' Milling sleeve</i>	<i>7/10</i>	<i>144.00</i>
			<i>149.76</i>
<i>3</i>	<i>20" x 1/2" x 18' Milling sleeve</i>	<i>4/10</i>	<i>96.50</i>
			<i>99.84</i>
	<i>(30)</i>		<i>240.00</i>
			<i>960</i>
			<i>249.60</i>
		<i>177152</i>	

Rediform
 7H 723

Line 101 M.P 2.65

MAOP 05334578 [17] 99

36" Sleeve at MP 2.65

M.I.W., INC.
755 N. MATHILDA AVE.
SUNNYVALE, CALIF. 94086

CUR NUMBER

2773

Sold To

J H & C

NY View

DATE

1/18/65

CUSTOMER'S DR#

HC 903105

SALESMAN

TERMS

(CASH)

F. O. B.

Shipped To

Address

2	36" X 1/2" X 9' <i>different proportions in the steel</i>	3800	
	Tri-ten specification		
	11/10/65 - Helen to re bill as one slave -		

Rediform
7H 723

JOB # 152548

LINE # 733

MAOP 05325485[1] JP9

36" Sleeve at MP 2.65

TRI-Ten

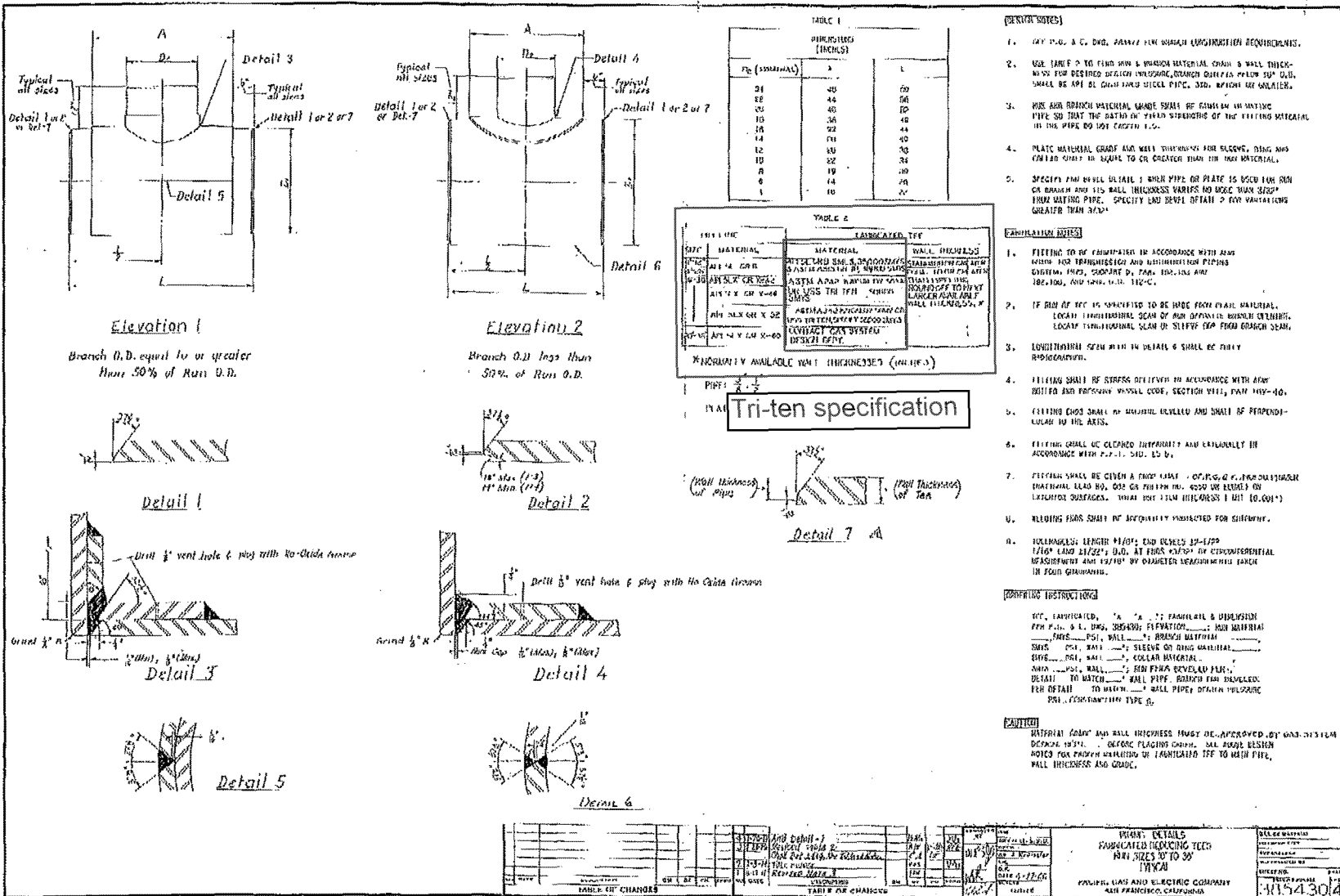


TABLE 1

PIPE SIZES (INCHES)

PIPE SIZES (INCHES)	L	L
24	40	60
26	44	66
28	48	72
30	52	78
32	56	84
34	60	90
36	64	96
40	72	108
44	80	120
48	88	132
52	96	144
56	104	156
60	112	168

TABLE 2

PIPE SIZE	FABRICATED TFE	
	MATERIAL	WALL THICKNESS
1/2" - 1"	ASTM A113	0.015 - 0.020
1" - 2"	ASTM A113	0.020 - 0.025
2" - 3"	ASTM A113	0.025 - 0.030
3" - 4"	ASTM A113	0.030 - 0.035
4" - 6"	ASTM A113	0.035 - 0.040
6" - 8"	ASTM A113	0.040 - 0.045
8" - 10"	ASTM A113	0.045 - 0.050
10" - 12"	ASTM A113	0.050 - 0.055
12" - 14"	ASTM A113	0.055 - 0.060
14" - 16"	ASTM A113	0.060 - 0.065
16" - 18"	ASTM A113	0.065 - 0.070
18" - 20"	ASTM A113	0.070 - 0.075
20" - 24"	ASTM A113	0.075 - 0.080
24" - 30"	ASTM A113	0.080 - 0.085
30" - 36"	ASTM A113	0.085 - 0.090

*NORMALLY AVAILABLE WALL THICKNESSES (IN INCHES)

PIPE SIZES: 1/2" - 1", 1" - 2", 2" - 3", 3" - 4", 4" - 6", 6" - 8", 8" - 10", 10" - 12", 12" - 14", 14" - 16", 16" - 18", 18" - 20", 20" - 24", 24" - 30", 30" - 36"

- GENERAL NOTES**
- SEE FIG. 1 & C, D, E, F, G, H, I, J, K, L, M, N, O, P, Q, R, S, T, U, V, W, X, Y, Z FOR DIMENSIONS AND MATERIAL SPECIFICATIONS.
 - USE TABLE 2 TO FIND THE MINIMUM WALL THICKNESS FOR DESIRED DESIGN PRESSURE, DESIGN QUALITY FACTOR (DQF), AND OTHER FACTORS SUCH AS DESIGN TEMPERATURE, CORROSION RESISTANCE, ETC.
 - FOR ALL BRANCH MATERIAL, MADE FROM THE SAME OR BETTER MATERIAL AS THE MAIN PIPE TO MATCH THE STRENGTH OF THE FITTING MATERIAL IN THE PIPE END JOINTS, E.T.C.
 - PLATE MATERIAL GRAD AND WALL THICKNESS FOR SLEEVES, END AND OTHER JOINTS TO BE EQUAL TO OR GREATER THAN THE MAIN MATERIAL.
 - SPECIFY THE SLEEVES DETAIL 1 WHEN PIPE OR PLATE IS USED FOR MAIN OR BRANCH AND THE WALL THICKNESS VARIES NO MORE THAN 25% FROM MAIN PIPE. SPECIFY END DETAIL 2 FOR VARIATIONS GREATER THAN 25%.

- FABRICATION NOTES**
- FITTING TO BE EMPLOYED IN ACCORDANCE WITH ALL NOTES FOR FABRICATING AND INSULATING PIPING SYSTEMS, PIPES, JOINTS, ETC., PER ENR-100 AND ENR-100-1, ENR-100-2, ENR-100-3, ENR-100-4, ENR-100-5, ENR-100-6, ENR-100-7, ENR-100-8, ENR-100-9, ENR-100-10, ENR-100-11, ENR-100-12, ENR-100-13, ENR-100-14, ENR-100-15, ENR-100-16, ENR-100-17, ENR-100-18, ENR-100-19, ENR-100-20, ENR-100-21, ENR-100-22, ENR-100-23, ENR-100-24, ENR-100-25, ENR-100-26, ENR-100-27, ENR-100-28, ENR-100-29, ENR-100-30, ENR-100-31, ENR-100-32, ENR-100-33, ENR-100-34, ENR-100-35, ENR-100-36, ENR-100-37, ENR-100-38, ENR-100-39, ENR-100-40, ENR-100-41, ENR-100-42, ENR-100-43, ENR-100-44, ENR-100-45, ENR-100-46, ENR-100-47, ENR-100-48, ENR-100-49, ENR-100-50, ENR-100-51, ENR-100-52, ENR-100-53, ENR-100-54, ENR-100-55, ENR-100-56, ENR-100-57, ENR-100-58, ENR-100-59, ENR-100-60, ENR-100-61, ENR-100-62, ENR-100-63, ENR-100-64, ENR-100-65, ENR-100-66, ENR-100-67, ENR-100-68, ENR-100-69, ENR-100-70, ENR-100-71, ENR-100-72, ENR-100-73, ENR-100-74, ENR-100-75, ENR-100-76, ENR-100-77, ENR-100-78, ENR-100-79, ENR-100-80, ENR-100-81, ENR-100-82, ENR-100-83, ENR-100-84, ENR-100-85, ENR-100-86, ENR-100-87, ENR-100-88, ENR-100-89, ENR-100-90, ENR-100-91, ENR-100-92, ENR-100-93, ENR-100-94, ENR-100-95, ENR-100-96, ENR-100-97, ENR-100-98, ENR-100-99, ENR-100-100.
 - IF PIPE IS TO BE JOINED TO BE MADE FROM BRASS MATERIAL, LENGTH OF BRASS SHALL BE AS SHOWN OR AS NOTED ON DRAWING. LOCATE THE BRASS SECTION OF SLEEVES FOR BRASS SECTION.
 - LONGITUDINAL SEAM WITH IN DETAIL 6 SHALL BE FULLY REINFORCED.
 - FITTING SHALL BE STRESS RELIEVED IN ACCORDANCE WITH AWWA D100 AND APPLICABLE NATIONAL CODE, SECTION 2111, PART 400-10.
 - FITTING END SHALL BE FULLY REVEALED AND SHALL BE PERPENDICULAR TO THE AXIS.
 - FITTING SHALL BE CLEANED THOROUGHLY AND REAMERED IN ACCORDANCE WITH ENR-100, ENR-100-1, ENR-100-2, ENR-100-3, ENR-100-4, ENR-100-5, ENR-100-6, ENR-100-7, ENR-100-8, ENR-100-9, ENR-100-10, ENR-100-11, ENR-100-12, ENR-100-13, ENR-100-14, ENR-100-15, ENR-100-16, ENR-100-17, ENR-100-18, ENR-100-19, ENR-100-20, ENR-100-21, ENR-100-22, ENR-100-23, ENR-100-24, ENR-100-25, ENR-100-26, ENR-100-27, ENR-100-28, ENR-100-29, ENR-100-30, ENR-100-31, ENR-100-32, ENR-100-33, ENR-100-34, ENR-100-35, ENR-100-36, ENR-100-37, ENR-100-38, ENR-100-39, ENR-100-40, ENR-100-41, ENR-100-42, ENR-100-43, ENR-100-44, ENR-100-45, ENR-100-46, ENR-100-47, ENR-100-48, ENR-100-49, ENR-100-50, ENR-100-51, ENR-100-52, ENR-100-53, ENR-100-54, ENR-100-55, ENR-100-56, ENR-100-57, ENR-100-58, ENR-100-59, ENR-100-60, ENR-100-61, ENR-100-62, ENR-100-63, ENR-100-64, ENR-100-65, ENR-100-66, ENR-100-67, ENR-100-68, ENR-100-69, ENR-100-70, ENR-100-71, ENR-100-72, ENR-100-73, ENR-100-74, ENR-100-75, ENR-100-76, ENR-100-77, ENR-100-78, ENR-100-79, ENR-100-80, ENR-100-81, ENR-100-82, ENR-100-83, ENR-100-84, ENR-100-85, ENR-100-86, ENR-100-87, ENR-100-88, ENR-100-89, ENR-100-90, ENR-100-91, ENR-100-92, ENR-100-93, ENR-100-94, ENR-100-95, ENR-100-96, ENR-100-97, ENR-100-98, ENR-100-99, ENR-100-100.
 - REMARKS: LENGTH 1/16" END SHALL BE 1/16" (1/16" END SHALL BE 1/16" OF DIAMETER NOMINAL PIPE SIZE) IN FOUR QUADRANTS.

Tri-ten specification

- FORMING INSTRUCTIONS**
- TE, FABRICATED, "A", "A"; FAMILIAR & DISBURSE PER P. 11, 12, 13, 14, 15, 16, 17, 18, 19, 20, 21, 22, 23, 24, 25, 26, 27, 28, 29, 30, 31, 32, 33, 34, 35, 36, 37, 38, 39, 40, 41, 42, 43, 44, 45, 46, 47, 48, 49, 50, 51, 52, 53, 54, 55, 56, 57, 58, 59, 60, 61, 62, 63, 64, 65, 66, 67, 68, 69, 70, 71, 72, 73, 74, 75, 76, 77, 78, 79, 80, 81, 82, 83, 84, 85, 86, 87, 88, 89, 90, 91, 92, 93, 94, 95, 96, 97, 98, 99, 100.

NOTICE

MATERIAL GRAD AND WALL THICKNESS MUST BE APPROVED BY OWNER'S REPRESENTATIVE BEFORE FABRICATING TFE TO MAIN PIPE, WALL THICKNESS AND GRADE.

REVISIONS		DATE		BY		CHECKED	
1	REVISED	1/15/70	10/10/70	10/10/70	10/10/70	10/10/70	10/10/70
TABLE CHANGES				TABLE FOR CHANGES			
TABLE CHANGES		TABLE FOR CHANGES		TABLE FOR CHANGES		TABLE FOR CHANGES	

PROJECT: DETAILS
 FABRICATED TFE FOR
 PER SIZES TO 36"
 TRICENT
 PULP, GAS AND ELECTRIC COMPANY
 SAN FRANCISCO, CALIFORNIA
 38154304