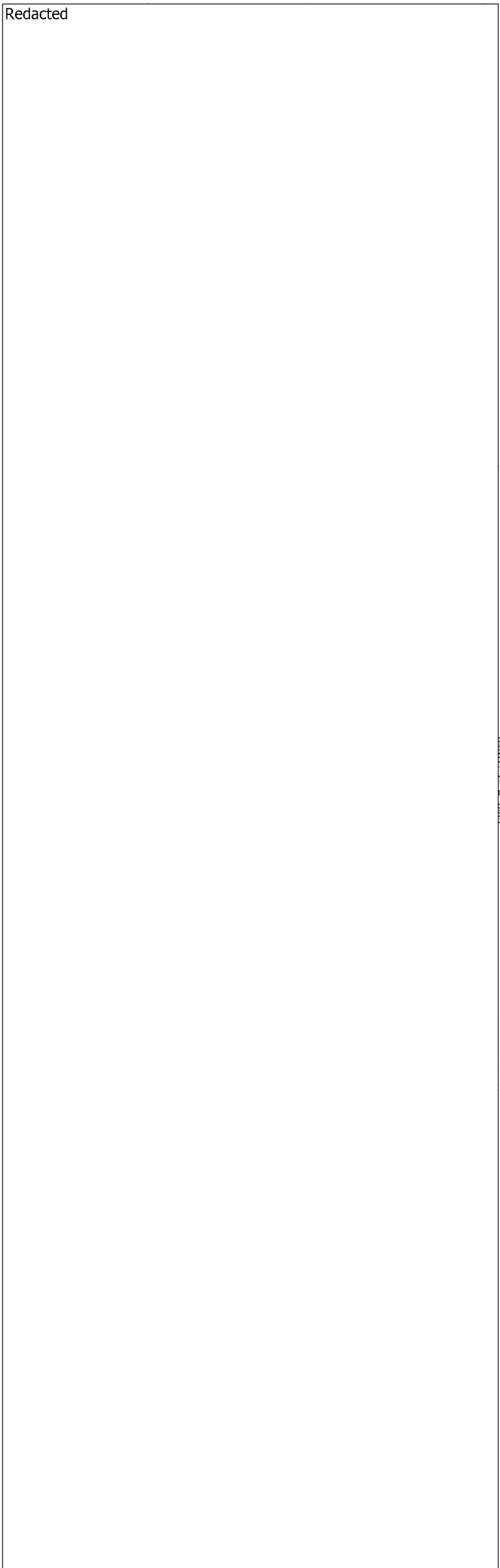


INVESTIGATED
SPLIT LOCATION

T-121 PLAN VIEW

INVESTIGATED
SPLIT LOCATION



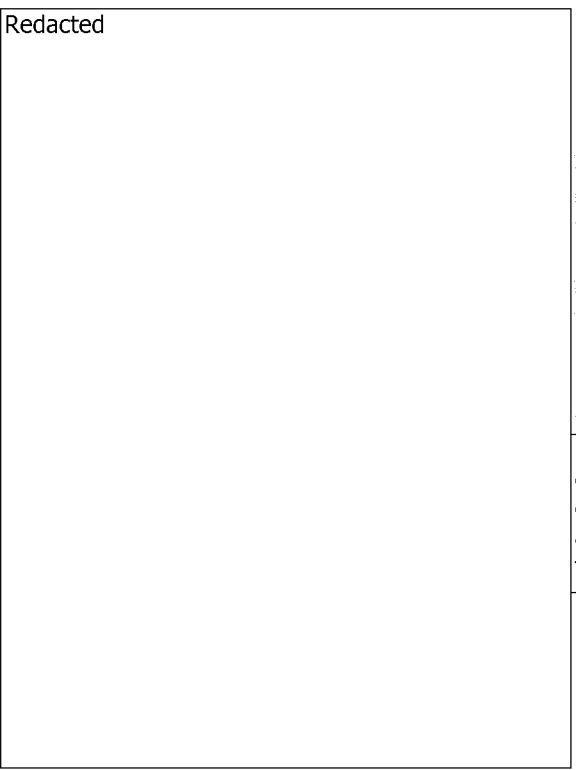
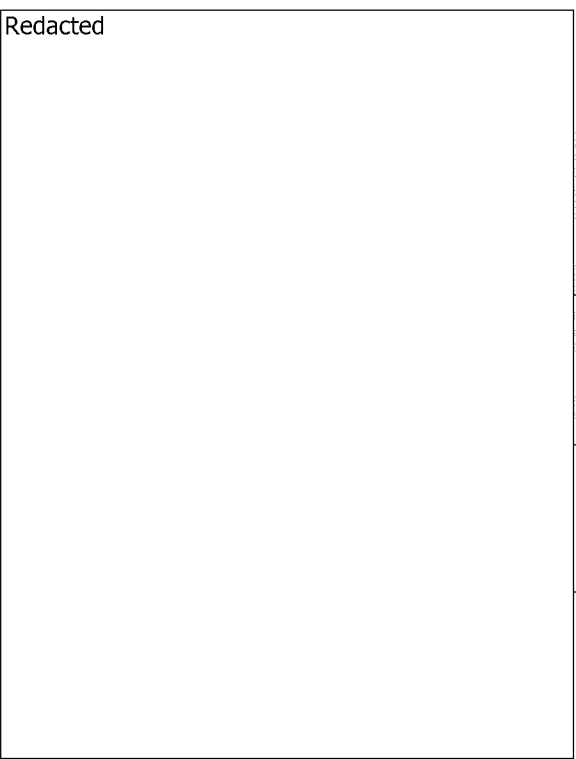
LOCATION A
ARROYO RD.
(SCALE: 1" = 100')

WALL MAP - 30; PLAT - 007 **Reverb**

ESTIMATED GALLONS OF WATER
REQUIRED LOCATION A TO B TEST:
247,822 GALLONS.

LOCATION B
WATER TANK LOCATION
(SCALE: 1" = 100')

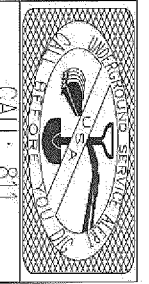
WALL MAP - 30; PLAT - 809 **Reverb**



SAFETY

SAFETY PLEDGE

- 1. ALWAYS PUT SAFETY FIRST.
- 2. LOOK FOR AND ACT TO REMOVE UNSAFE SITUATIONS.
- 3. HELP AND ENCOURAGE OTHERS TO ACT SAFELY.



NO.	DATE	ISSUED FOR CONSTRUCTION DESCRIPTION	DW/SPIC	DNK	GRND SURV	APVD BY

APPROVED BY 41592685

BY: SUPV. DWN. PRC. CK. PRA. DATE 10/28/11

HYDROTEST 121
1-303
MP 28.763 - 27.704
LIVERMORE, CALIFORNIA
PACIFIC GAS AND ELECTRIC COMPANY
WALNUT CREEK, CALIFORNIA

MICROFILM

ROLL OF MAIL SHEET 05

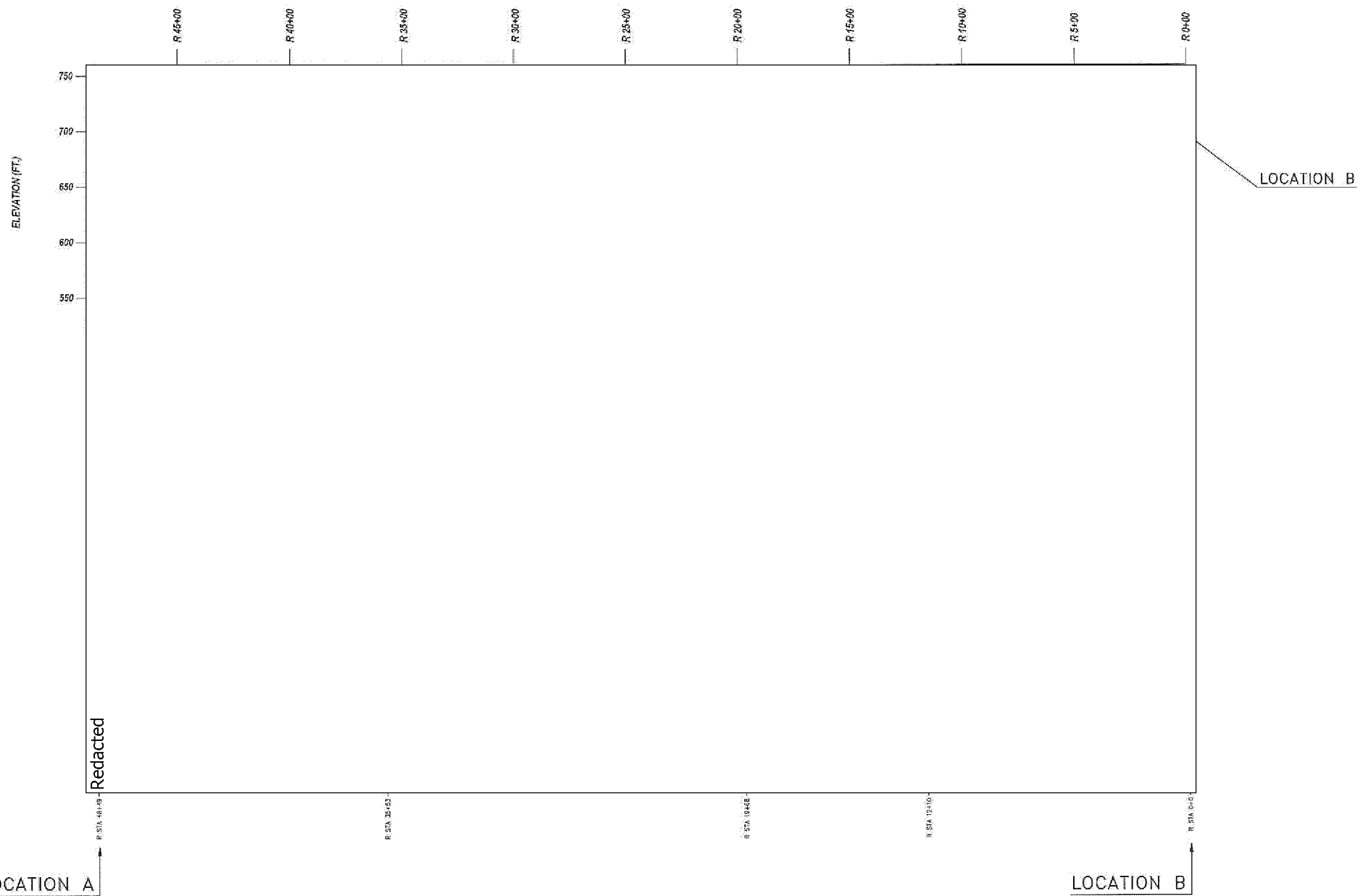
DRG LIST

SHEETS

SHEET NO. 02 OF 05 SHEETS

41592685

T-121 PROFILE VIEW
(NOT TO SCALE)



NOTE:
FIELD TO VERIFY WITH
GPS LAT./LONG. WHERE
SPECIFIED.

	P STATION
	FITTING (MATERIAL OF RECORD)
	PIPE (MATERIAL OF RECORD)
	GM NUMBER
	YEAR INSTALLED (LENGTH)
	R STATION

LOCATION A

LOCATION B

PIPELINE FEATURES
SEE MATERIAL OF RECORD ON
SHEET 5 OF 5
(NOT TO SCALE)

LOCATION	R STA.	ELEV.	MIN. PRESS	MAX. PRESS
MIN. PRESSURE CONTROL POINT	0+00	693'	1097 psig	1200 psig
MAX. PRESSURE CONTROL POINT	48+49	528'	1169 psig	1200 psig
LOCATION A (TEST STATION)	48+49	528'	1169 psig	1200 psig
LOCATION B	0+00	693'	1097 psig	1143 psig

SAFETY

SAFETY PLEDGE

I ALWAYS PUT SAFETY FIRST.
I LOOK FOR AND ACT TO
RESOLVE UNSAFE SITUATIONS.
I HELP AND ENCOURAGE
OTHERS TO ACT SAFELY.



NO.	DATE	ISSUED FOR	DESCRIPTION	CM/SPEC	DWN	CHKD	SUPV	APVD BY
1	10/31/11	ISSUED FOR CONSTRUCTION						

APPROVED BY: CM 41592685
 SUPV
 DSCR
 DWN PRC
 CHKD IGH
 OK RAA
 DATE 10/31/11
 SCALES

HYDROTEST 121
 L-303
 MP 26.763 - 27.704
 LIVERMORE, CALIFORNIA

PACIFIC GAS AND ELECTRIC COMPANY
 WALNUT CREEK, CALIFORNIA

MICROFILM
BILL OF MATL SHEET 05
DWG LIST
SUPPSDS
SUPPSD BY
SHEET NO. 03 OF 05 SHEETS
41592685