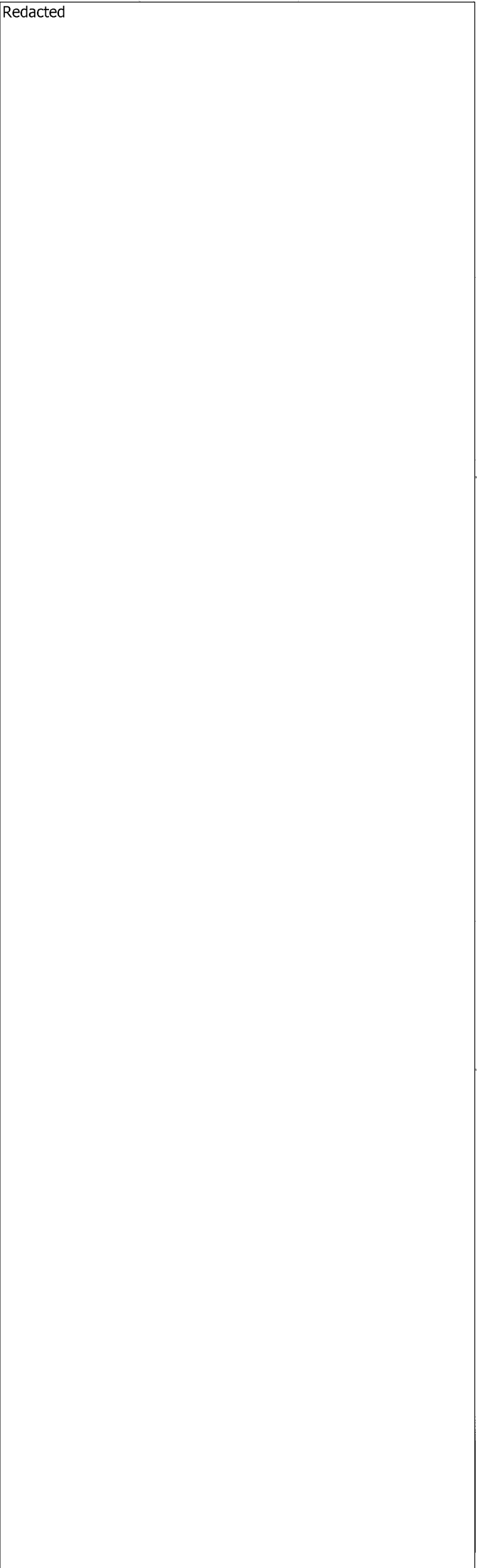


INVESTIGATED  
SPLIT LOCATION

T-121 PLAN VIEW  
(SCALE: 1" = 500')

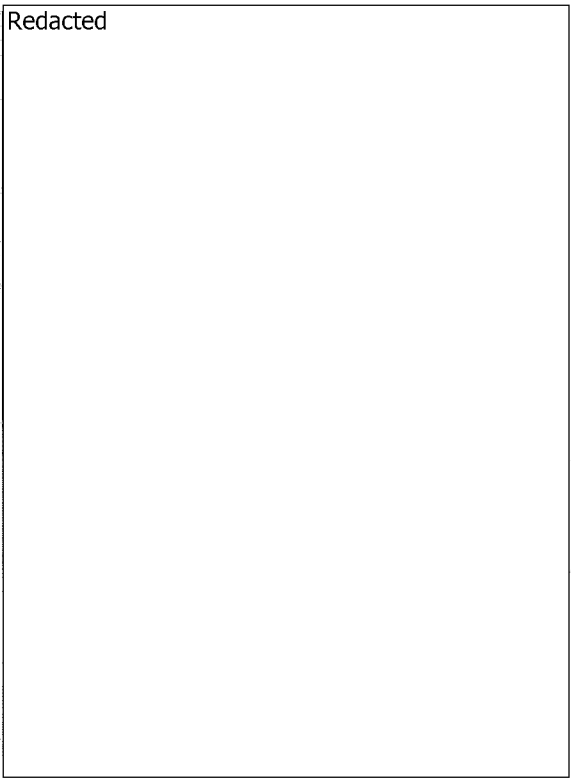
INVESTIGATED  
SPLIT LOCATION



LOCATION A  
ARROYO RD.  
(SCALE: 1" = 100')

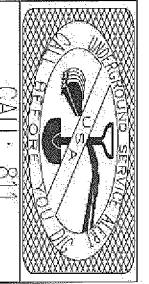
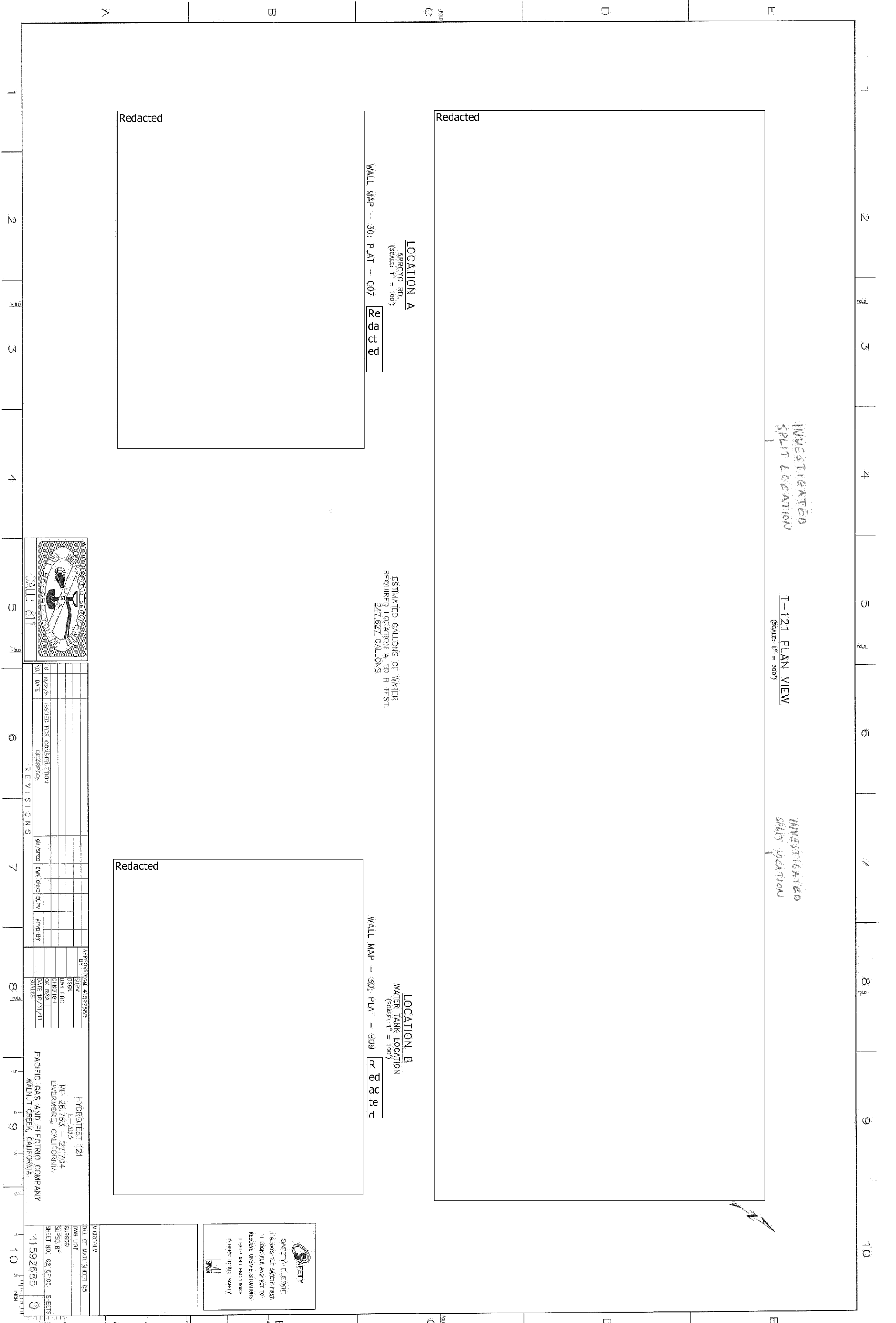
ESTIMATED GALLONS OF WATER  
REQUIRED LOCATION A TO B TEST:  
247,927 GALLONS.

LOCATION B  
WATER TANK LOCATION  
(SCALE: 1" = 100')



WALL MAP - 30; PLAT - 007

WALL MAP - 30; PLAT - 809



REVISIONS

NO.	DATE	DESCRIPTION	BY/DATE	CHKD/DATE	APPR/DATE
1		ISSUED FOR CONSTRUCTION			

APPROVED BY: 41592685

BY	DATE

PACIFIC GAS AND ELECTRIC COMPANY  
WALNUT CREEK, CALIFORNIA

MP. 28.763 - 27.704  
LIVERMORE, CALIFORNIA

HYDROTEST 121  
1-303

NO. OF MAIN SHEET	05
SHEET NO. 02 OF 05 SHEETS	

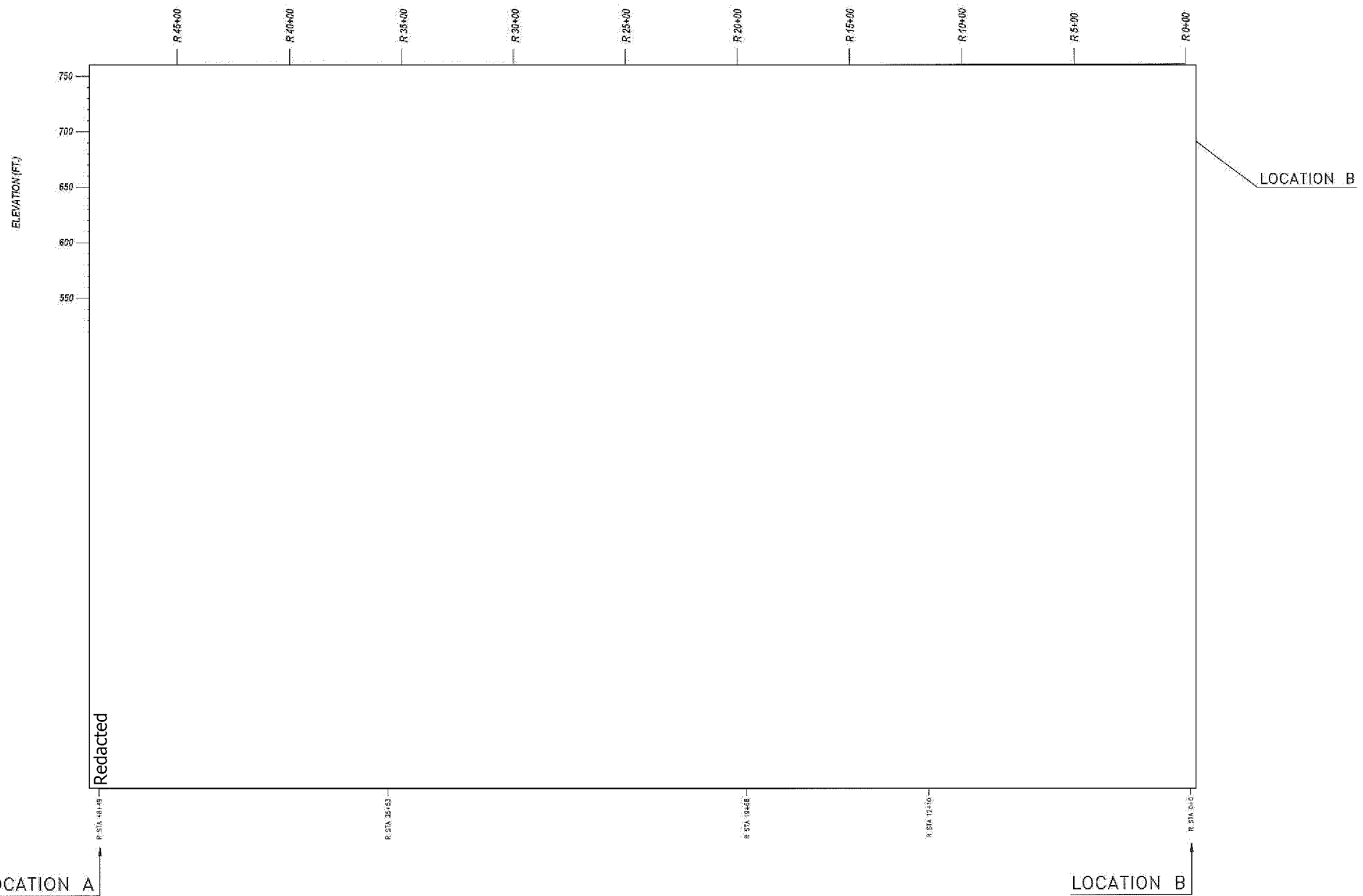
**SAFETY**

SAFETY PLEDGE

- 1. ALWAYS PUT SAFETY FIRST.
- 2. LOOK FOR AND ACT TO REMOVE UNSAFE SITUATIONS.
- 3. HELP AND ENCOURAGE OTHERS TO ACT SAFELY.

EMERGENCY: 911

T-121 PROFILE VIEW  
(NOT TO SCALE)



NOTE:  
FIELD TO VERIFY WITH  
GPS LAT./LONG. WHERE  
SPECIFIED.

	P STATION
	FITTING (MATERIAL OF RECORD)
	PIPE (MATERIAL OF RECORD)
	GM NUMBER
	YEAR INSTALLED (LENGTH)
	R STATION

LOCATION A

LOCATION B

PIPELINE FEATURES  
SEE MATERIAL OF RECORD ON  
SHEET 5 OF 5  
(NOT TO SCALE)

LOCATION	R STA.	ELEV.	MIN. PRESS	MAX. PRESS
MIN. PRESSURE CONTROL POINT	0+00	693'	1097 psig	
MAX. PRESSURE CONTROL POINT	48+49	528'		1200 psig
LOCATION A (TEST STATION)	48+49	528'	1169 psig	1200 psig
LOCATION B	0+00	693'	1097 psig	1143 psig

**SAFETY**

**SAFETY PLEDGE**

I ALWAYS PUT SAFETY FIRST.  
I LOOK FOR AND ACT TO  
RESOLVE UNSAFE SITUATIONS.  
I HELP AND ENCOURAGE  
OTHERS TO ACT SAFELY.



NO.	DATE	ISSUED FOR	DESCRIPTION	CM/SPEC	DWN	CHKD	SUPV	APVD BY
1	10/31/11	ISSUED FOR CONSTRUCTION						

APPROVED BY: CM 41592685  
 SUPV  
 DSCR  
 DWN PRC  
 CHKD IGH  
 OK RAA  
 DATE 10/31/11  
 SCALES

HYDROTEST 121  
 L-303  
 MP 26.763 - 27.704  
 LIVERMORE, CALIFORNIA

PACIFIC GAS AND ELECTRIC COMPANY  
 WALNUT CREEK, CALIFORNIA

MICROFILM
BILL OF MATL SHEET 05
DWG LIST
SUPPSDS
SUPSD BY
SHEET NO. 03 OF 05 SHEETS
41592685