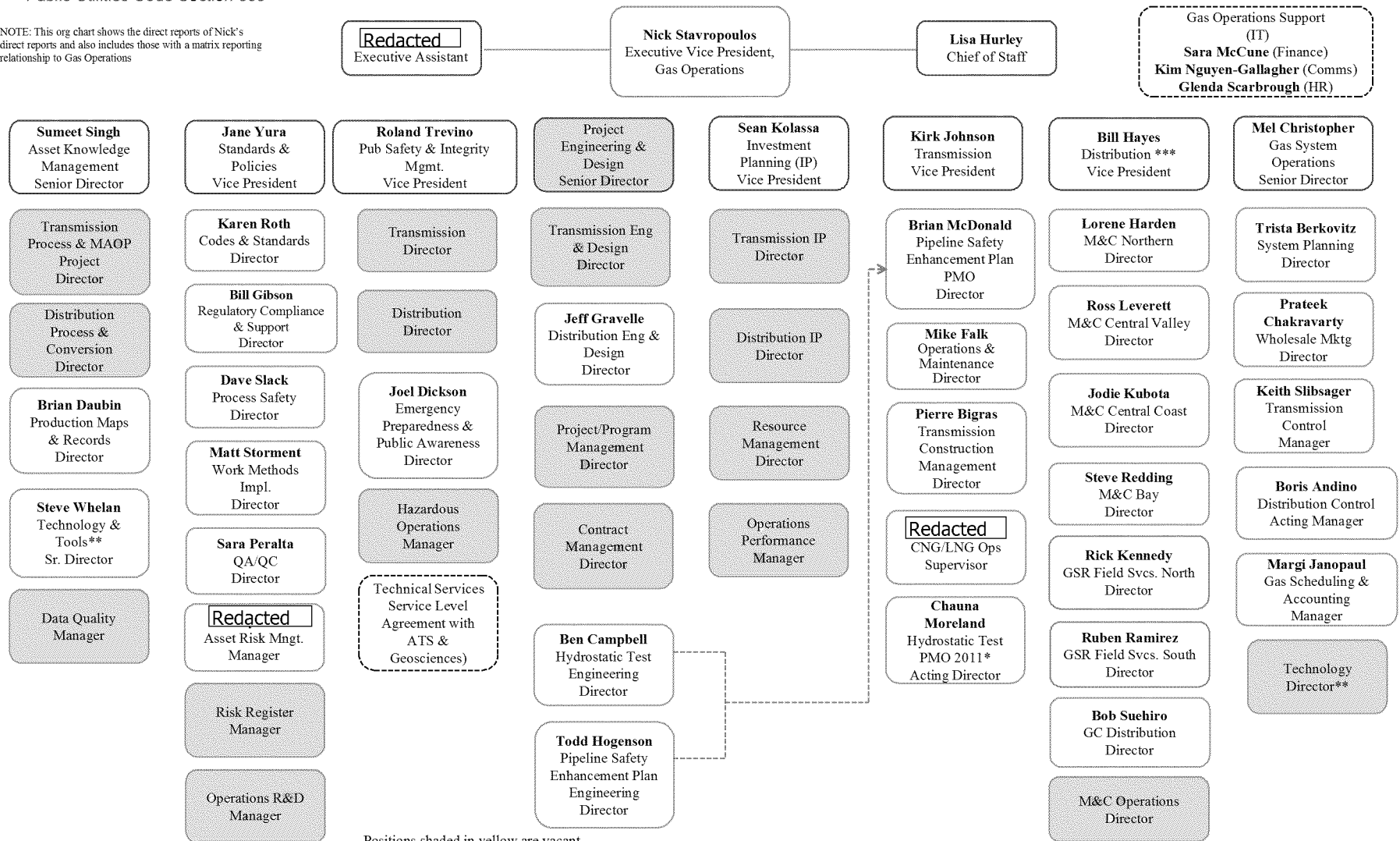


NOTE: This org chart shows the direct reports of Nick's direct reports and also includes those with a matrix reporting relationship to Gas Operations



Positions shaded in yellow are vacant.
* 2011 only. In 2012, role will combine with Enhancement Plan PMO in Transmission
** Roles that will have direct interaction with IT
*** Dispatch functions are still under discussion
--- Matrix reporting relationship