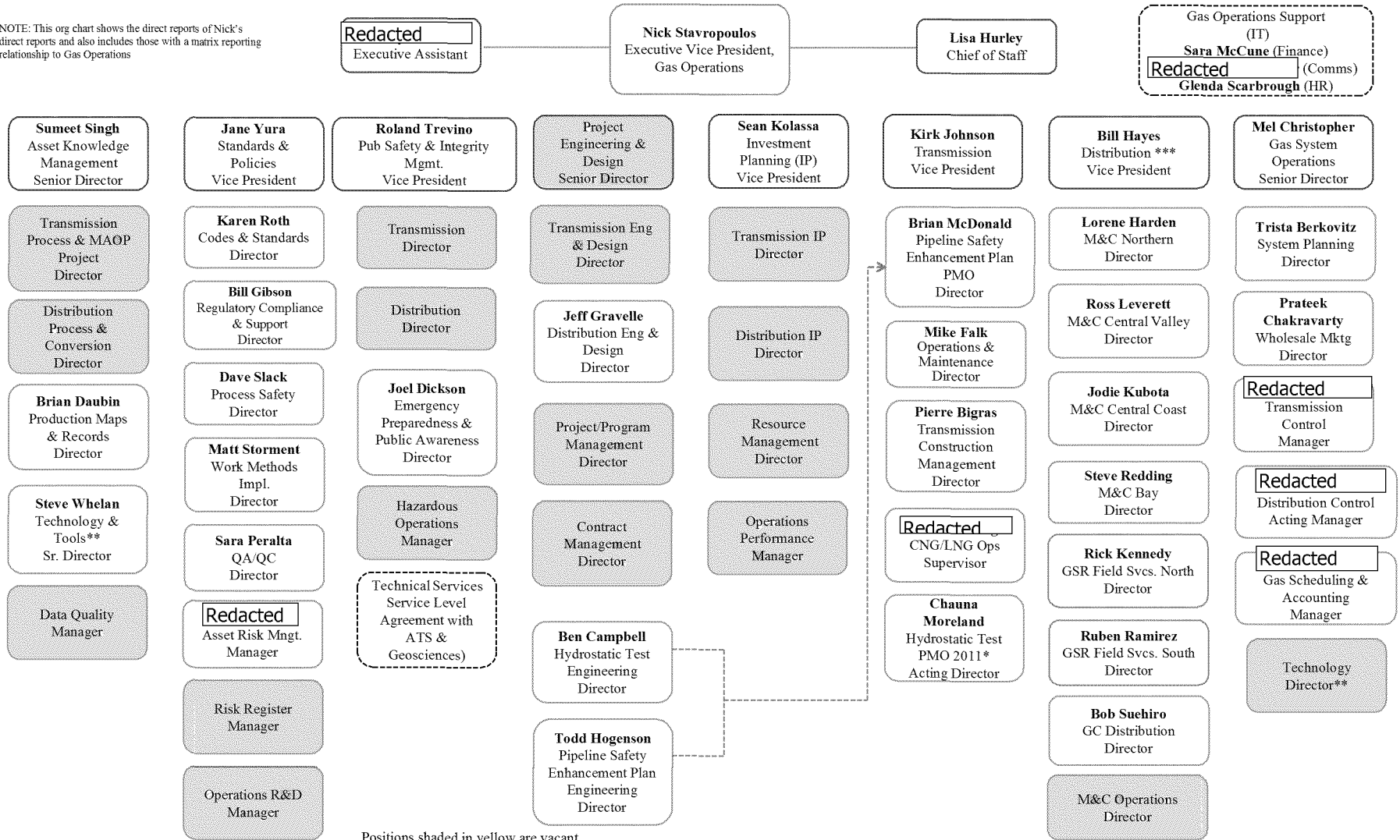


NOTE: This org chart shows the direct reports of Nick's direct reports and also includes those with a matrix reporting relationship to Gas Operations



Positions shaded in yellow are vacant.

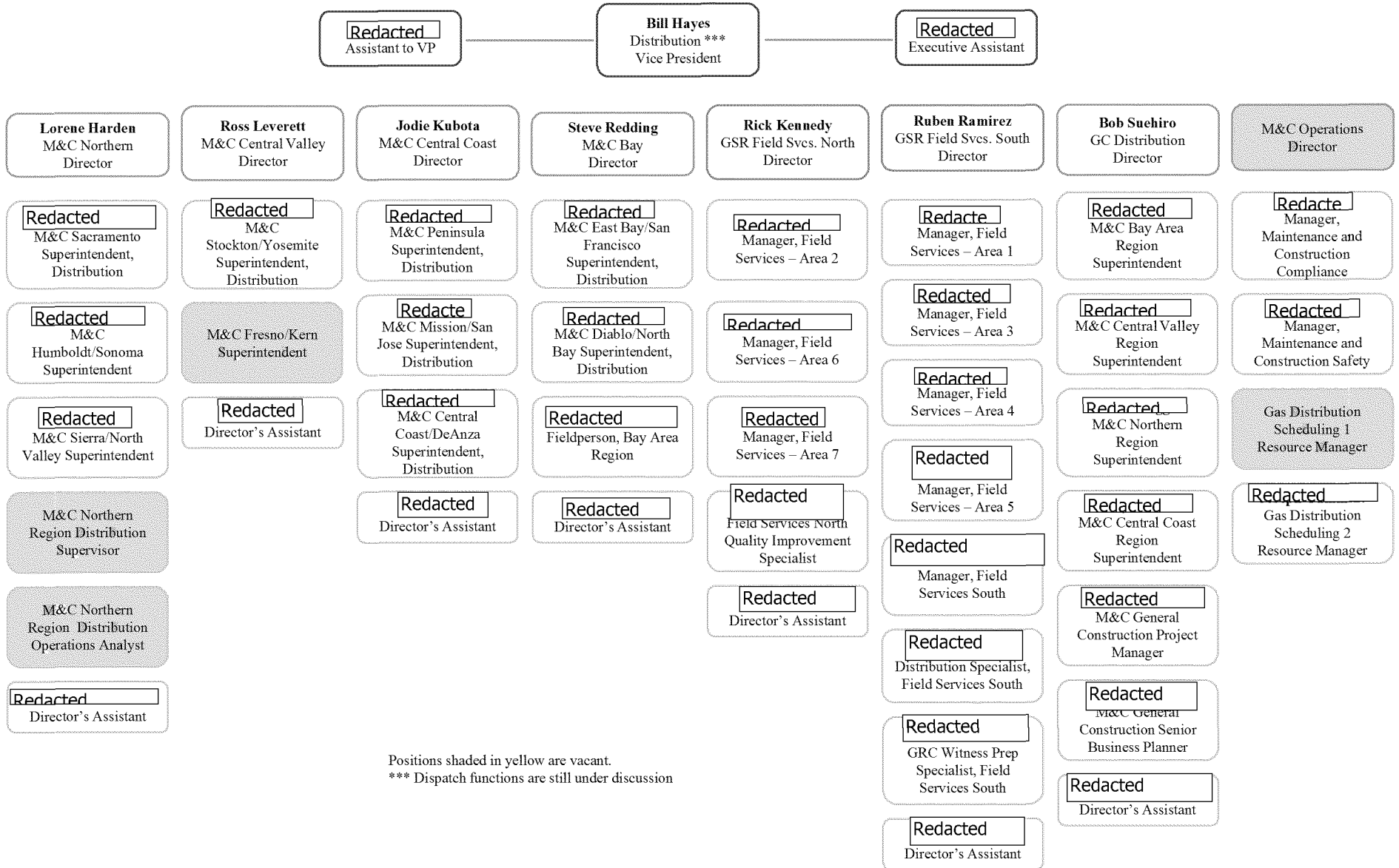
* 2011 only. In 2012, role will combine with Enhancement Plan PMO in Transmission

** Roles that will have direct interaction with IT

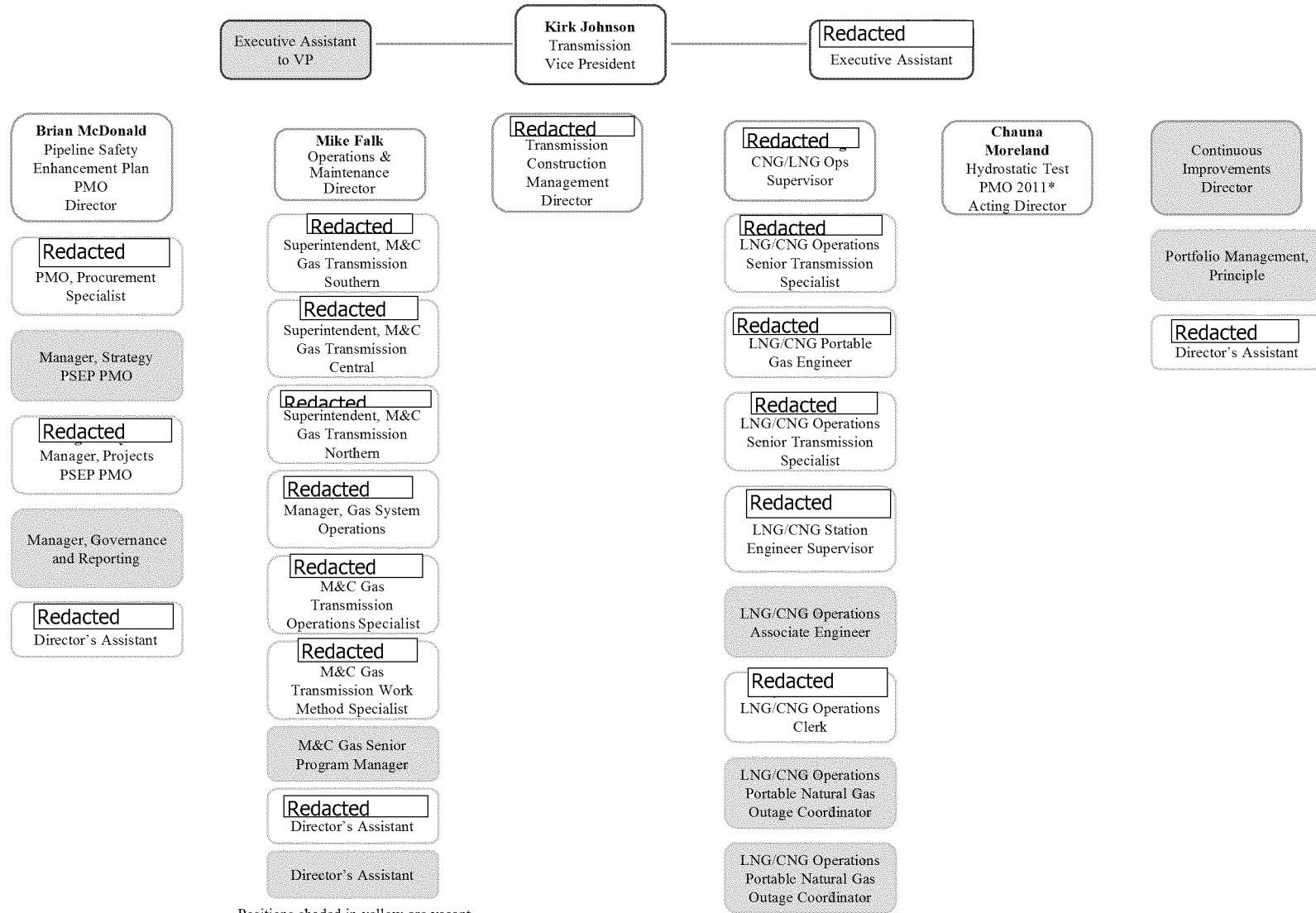
*** Dispatch functions are still under discussion

--- Matrix reporting relationship

01/06/12



Positions shaded in yellow are vacant.
*** Dispatch functions are still under discussion



Positions shaded in yellow are vacant.

* 2011 only. In 2012, role will combine with Enhancement Plan PMO in Transmission