



801 Louisiana, Ste.200
Houston, Texas 77002

Redacted

October 8, 2011

Pacific Gas and Electric Company
350 N. Wiget
Walnut Creek, CA 94598
Attention: Redacted

Test Contractor:	Milbar Hydro-Test Inc. -- FY12-112
Asset Owner:	Pacific Gas and Electric Company -- 41497337-T87B
Construction Contractor:	Snelson -- 41474005 -T87B
Test Section:	PG&E T-87B L-300A, MP 449.75 - 450.7794
Test Date:	October 8, 2011
Certificate Number:	RCP 61362 - T-87B, L-300A, MP 449.75 - 450.7794

To whom it may concern,

This letter is to certify that the hydrostatic test performed on pipe owned by Pacific Gas and Electric Company and tested by Milbar Hydro-Test Inc. met the requirements of the Code of Federal Regulations, Title 49, Part 192, Subpart J (Class 3).

This hydrostatic test was completed successfully. Pressure was maintained on the test facilities in excess of 8.25 continuous hours without evidence of a leak failure. Water was the test medium. At the highest elevation point in the test section, the calculated test pressure was 959 psig and the established MAOP is 639 psig.

Pressure increased 9 psi during the test. No fluid was intentionally injected or released from the test section. Net corrected volumetric change from beginning of the test to the end of the test is calculated to be 1,423.26 ounces, gain, which is equivalent to a 0.4 °F change in pipe temperature and within the error attributed to the temperature measurement instrumentation utilized.

Test pressure did not remain steady even though no leaks were observed. The volumetric gain is attributed to the error characteristic of the temperature measurement instrumentation utilized.

Sincerely,

Redacted

cc. file

COPY

OCT 08 2011

PG & E

C:\1__PG&E FILES\TESTS\KTest T-87B\Reda

T-87B version 8.30.2011

Letter



Hydrostatic Test Certification

Company	Pacific Gas and Electric Company	Job Number	41497337-T87B
Construction Co.	Snelson	Job Number	41474005-T87B
Hydro. Test Co.	Milbar Hydro-Test Inc.	Project No.	FY12-112
Test Section	PG&E T-87B L-300A, MP 449.75 - 450.7794		
File Name	RCP 61362 - T-87B, L-300A, MP 449.75 - 450.7794		

Hydrostatic Test Pressure

APPLICABLE CODE FOR CERTIFICATION: _____ Test Date: 8-Oct-11

Code of Federal Regulations, Title 49, Part 192, Subpart J (Class 3)

This is to certify that the pipeline or pipeline section(s) described below was hydrostatically pressure tested in accordance with the following procedure:

Pipeline: PG&E T-87B L-300A, MP 449.75 - 450.7794

From: 0+00 To: 54+63

Pipe Data

Segment	Length	Diameter	Wall Thickness	Specification	100% SMYS
1	30 ft	34.000 in.	0.500 in.	API5L-X65, DSAW, Arc Weld, Steel	1,912 psi
2	18 ft	34.000 in.	0.375 in.	API5L-X65, DSAW, Arc Weld, Steel	1,434 psi
3	3,559 ft	34.000 in.	0.344 in.	API5L-X52, DSAW, Arc Weld, Steel	1,052 psi
4	46 ft	34.000 in.	0.505 in.	API5L-X60, DSAW, Arc Weld, Steel	1,782 psi
5	612 ft	36.000 in.	0.500 in.	API5L-X52, DSAW, Arc Weld, Steel	1,444 psi
6	111 ft	36.000 in.	0.531 in.	API5L-X52, DSAW, Arc Weld, Steel	1,534 psi
7	3 ft	34.000 in.	0.500 in.	API5L-X52, DSAW, Arc Weld, Steel	1,529 psi
8	1,062 ft	34.000 in.	0.408 in.	API5L-X60, DSAW, Arc Weld, Steel	1,433 psi
9	56 ft	34.000 in.	0.505 in.	API5L-X60, DSAW, Arc Weld, Steel	1,782 psi
10	27 ft	34.000 in.	0.500 in.	API5L-X65, DSAW, Arc Weld, Steel	1,912 psi
11	40 ft	34.000 in.	0.560 in.	API5L-X65, DSAW, Arc Weld, Steel	1,912 psi

Initial Test Conditions

Pressure at Test Point:	960 psig	Date/Time:	10/8/11 9:08 AM	Pipe Temperature	
Ambient Temperature:	61.0 °F	Elevation @ Test Point:	460.0 ft	Unrestrained:	64.0 °F
Pressure @ High Point (Cal/Measure):	960 psig	Elevation @ High Point:	461.0 ft	Restrained:	69.0 °F
Pressure @ Low Point (Cal/Measure):	1,020 psig	Elevation @ Low Point:	322.0 ft	Location:	0+00
				Location:	1+00
				Location:	54+63

Final Test Conditions

Pressure at Test Point:	969 psig	Date/Time:	10/8/11 5:23 PM	Pipe Temperature	
Ambient Temperature:	71.0 °F	Elevation @ Test Point:	460.0 ft	Unrestrained:	74.0 °F
Pressure @ High Point (Cal/Measure):	969 psig	Elevation @ High Point:	461.0 ft	Restrained:	69.0 °F
Pressure @ Low Point (Cal/Measure):	1,029 psig	Elevation @ Low Point:	322.0 ft	Location:	0+00
				Location:	1+00
				Location:	54+63

Net Change in Volume of the Test Section ± (+ Gain, - Loss): 1,423.26 oz gain 0.0044% 0.396 °F equivalent

Test Duration: 8.25 hours

Minimum Test Pressure:	960 psig	Max Elevation	960 psig	Min Elevation	1,020 psig
Maximum Test Pressure:	969 psig		969 psig		1,029 psig
% SMYS:	67.0%		92.0%		71.8%
Test Segment Observed % SMYS:	Minimum	50.7%	Maximum	95.8%	

Minimum Test Pressure (Calculated/Measured): 960 psig

Maximum Allowable Operating Pressure: DOT Part 192 Test Factor= 1.50 639 psig

Were leaks observed?	No	Explain:
Acceptable Hydrostatic Test?	Yes	No leaks were observed during the test period. The test section included 5,496 feet of buried and 48 feet of exposed pipe. Pressure gained 9 psi during the test. The buried pipe segment fluid temperature remained steady and the exposed pipe segment gained 10°F. No fluid was intentionally injected or released from the test section. Net corrected volumetric change from beginning of the test to the end of the test is calculated to be 1,423.26 ounces, gain, which is equivalent to a 0.4 °F change in pipe temperature and within the error attributed to the temperature measurement instrumentation utilized. Test pressure did not remain steady even though no leaks were observed. The volumetric gain is attributed to the error characteristic of the temperature measurement instrumentation utilized.

Remarks: Pipe segments 10' 1.05" diam; 10' 1.66" diam and 15' 2.3" diameter were tested but not included on the pipe sheet.

Redacted

COPY
OCT 08 2011
PG & E



Dead Weight Log Sheet

Owner Company	Pacific Gas and Electric Company	Job Number	41497337-T87B
Construction Co.	Snelson	Job Number	41474005 - T87B
Testing Co.	Milbar Hydro-Test Inc.	Project No.	FY12-112
Test Section	PG&E T-87B L-300A, MP 449.75 - 450.7794		
File Name	RCP 61362 - T-87B, L-300A, MP 449.75 - 450.7794		

Date	8-Oct-11	Test Log		
------	----------	----------	--	--

Log No.	Test Period		Test Pressure	Temperature °F			Remarks		
	Date	Time		Ambient	Pipe		Comment	Bleed	Inject
					Unrestrained	Restrained			
1	10/8/11	8:46 AM	711 psig	56 °F	63 °F	69 °F			
2	10/8/11	8:47 AM	721 psig	56 °F	63 °F	69 °F	Inject	1,974 oz.	
3	10/8/11	8:48 AM	731 psig	56 °F	63 °F	69 °F	Inject	1,974 oz.	
4	10/8/11	8:49 AM	741 psig	56 °F	63 °F	69 °F	Inject	1,974 oz.	
5	10/8/11	8:50 AM	751 psig	56 °F	63 °F	69 °F	Inject	2,045 oz.	
6	10/8/11	8:51 AM	761 psig	56 °F	63 °F	69 °F	Inject	2,045 oz.	
7	10/8/11	8:52 AM	771 psig	56 °F	63 °F	69 °F	Inject	1,974 oz.	
8	10/8/11	8:53 AM	781 psig	57 °F	63 °F	69 °F	Inject	1,974 oz.	
9	10/8/11	8:54 AM	791 psig	57 °F	63 °F	69 °F	Inject	2,045 oz.	
10	10/8/11	8:55 AM	801 psig	57 °F	63 °F	69 °F	Inject	1,974 oz.	
11	10/8/11	8:56 AM	811 psig	57 °F	63 °F	69 °F	Inject	2,045 oz.	
12	10/8/11	8:57 AM	821 psig	57 °F	63 °F	69 °F	Inject	1,974 oz.	
13	10/8/11	8:58 AM	831 psig	57 °F	63 °F	69 °F	Inject	1,974 oz.	
14	10/8/11	8:59 AM	841 psig	57 °F	63 °F	69 °F	Inject	2,045 oz.	
15	10/8/11	9:00 AM	851 psig	57 °F	63 °F	69 °F	Inject	2,045 oz.	
16	10/8/11	9:00 AM	861 psig	57 °F	63 °F	69 °F	Inject	1,974 oz.	
17	10/8/11	9:00 AM	871 psig	57 °F	63 °F	69 °F	Inject	1,974 oz.	
18	10/8/11	9:01 AM	881 psig	57 °F	63 °F	69 °F	Inject	2,045 oz.	
19	10/8/11	9:02 AM	891 psig	57 °F	63 °F	69 °F	Inject	1,974 oz.	
20	10/8/11	9:03 AM	901 psig	57 °F	63 °F	69 °F	Inject	2,045 oz.	
21	10/8/11	9:04 AM	911 psig	57 °F	63 °F	69 °F	Inject	2,045 oz.	
22	10/8/11	9:05 AM	921 psig	57 °F	63 °F	69 °F	Inject	1,974 oz.	
23	10/8/11	9:06 AM	931 psig	57 °F	63 °F	69 °F	Inject	2,115 oz.	
24	10/8/11	9:06 AM	941 psig	57 °F	63 °F	69 °F	Inject	1,904 oz.	
25	10/8/11	9:07 AM	951 psig	57 °F	63 °F	69 °F	Inject	2,045 oz.	
26	10/8/11	9:08 AM	960 psig	61 °F	64 °F	69 °F	Inject	1,833 oz.	
27	10/8/11	9:08 AM	960 psig	61 °F	64 °F	69 °F	On Test		
28	10/8/11	9:23 AM	960 psig	54 °F	65 °F	69 °F			
29	10/8/11	9:38 AM	960 psig	65 °F	65 °F	69 °F			
30	10/8/11	9:53 AM	960 psig	65 °F	66 °F	69 °F			
31	10/8/11	10:08 AM	961 psig	67 °F	67 °F	69 °F			
32	10/8/11	10:23 AM	961 psig	68 °F	67 °F	69 °F			
33	10/8/11	10:38 AM	961 psig	70 °F	68 °F	69 °F			
34	10/8/11	10:53 AM	961 psig	73 °F	68 °F	69 °F			
35	10/8/11	11:08 AM	962 psig	74 °F	68 °F	69 °F			
36	10/8/11	11:23 AM	962 psig	75 °F	68 °F	69 °F			
37	10/8/11	11:38 AM	962 psig	76 °F	68 °F	69 °F			
38	10/8/11	11:53 AM	962 psig	77 °F	69 °F	69 °F			
39	10/8/11	12:08 PM	963 psig	78 °F	69 °F	69 °F			
40	10/8/11	12:23 PM	963 psig	78 °F	69 °F	69 °F			
41	10/8/11	12:38 PM	963 psig	78 °F	69 °F	69 °F			
42	10/8/11	12:53 PM	964 psig	80 °F	70 °F	69 °F			
43	10/8/11	1:08 PM	964 psig	81 °F	70 °F	69 °F			
44	10/8/11	1:23 PM	964 psig	80 °F	71 °F	69 °F			

COPY

OCT 08 2011

PG & E



Dead Weight Log Sheet

Owner Company	Pacific Gas and Electric Company	Job Number	41497337-T87B
Construction Co.	Snelson	Job Number	41474005 - T87B
Testing Co.	Milbar Hydro-Test Inc.	Project No.	FY12-112
Test Section	PG&E T-87B L-300A, MP 449.75 - 450.7794		
File Name	RCP 61362 - T-87B, L-300A, MP 449.75 - 450.7794		

Date 8-Oct-11

Test Log

Log No.	Test Period		Test Pressure	Temperature °F			Remarks		
	Date	Time		Ambient	Pipe		Comment	Bleed	Inject
					Unrestrained	Restrained			
45	10/8/11	1:38 PM	965 psig	81 °F	71 °F	69 °F			
46	10/8/11	1:53 PM	965 psig	81 °F	71 °F	69 °F			
47	10/8/11	2:08 PM	965 psig	81 °F	72 °F	69 °F			
48	10/8/11	2:23 PM	966 psig	80 °F	73 °F	69 °F			
49	10/8/11	2:38 PM	966 psig	81 °F	73 °F	69 °F			
50	10/8/11	2:53 PM	966 psig	81 °F	74 °F	69 °F			
51	10/8/11	3:08 PM	967 psig	81 °F	74 °F	69 °F			
52	10/8/11	3:23 PM	967 psig	80 °F	74 °F	69 °F			
53	10/8/11	3:38 PM	967 psig	79 °F	75 °F	69 °F			
54	10/8/11	3:53 PM	968 psig	77 °F	75 °F	69 °F			
55	10/8/11	4:08 PM	968 psig	76 °F	75 °F	69 °F			
56	10/8/11	4:23 PM	968 psig	75 °F	75 °F	69 °F			
57	10/8/11	4:38 PM	969 psig	73 °F	75 °F	69 °F			
58	10/8/11	4:53 PM	969 psig	73 °F	75 °F	69 °F			
59	10/8/11	5:08 PM	969 psig	72 °F	75 °F	69 °F			
60	10/8/11	5:23 PM	969 psig	71 °F	74 °F	69 °F			
End of Test									
Spike Test									
Hydrostatic Test									

Were leaks observed during the test period?

Exposed and buried pipe,
no leaks observed.

High Test Pressure:	969 psig
Low Test Pressure:	960 psig

COPY

OCT 08 2011

PG & E



Pipe Segment Volume Calculations

Company	Pacific Gas and Electric Company	Job Number	41497337-T87B
Construction Co.	Snelson	Job Number	41474005-T87B
Hydro. Test Co.	Milbar Hydro-Test Inc.	Project No.	FY12-112
Test Section	PG&E T-87B L-300A, MP 449.75 - 450.7794	WATER	
File Name	RCP 61362 - T-87B, L-300A, MP 449.75 - 450.7794		

General Pipe Data

Description	Segment									
	1	2	3	4	5	6	7	8	9	10
Restrained or Unrestrained?	Unrestrained	Unrestrained	Restrained	Restrained	Restrained	Restrained	Restrained	Restrained	Restrained	Restrained
Outside Diameter	34.000 in.	34.000 in.	34.000 in.	34.000 in.	36.000 in.	36.000 in.	34.000 in.	34.000 in.	34.000 in.	34.000 in.
Wall Thickness	0.500 in.	0.375 in.	0.344 in.	0.505 in.	0.500 in.	0.531 in.	0.500 in.	0.406 in.	0.505 in.	0.500 in.
Inside Diameter	33.000 in.	33.250 in.	33.312 in.	32.990 in.	35.000 in.	34.938 in.	33.000 in.	33.188 in.	32.990 in.	33.000 in.
Spec./Grade	API5L-X65	API5L-X65	API5L-X52	API5L-X60	API5L-X52	API5L-X52	API5L-X52	API5L-X60	API5L-X60	API5L-X65
Length Unrestrained	30 ft	18 ft								
Length Restrained			3.5 ft	46 ft	612 ft	111 ft	3 ft	1,082 ft	56 ft	27 ft
Temperature - On Test	64 °F	64 °F	69.0 °F	69.0 °F	69.0 °F	69.0 °F	69.0 °F	69.0 °F	69.0 °F	69.0 °F
Temperature - End of Test	74 °F	74 °F	69.0 °F	69.0 °F	69.0 °F	69.0 °F	69.0 °F	69.0 °F	69.0 °F	69.0 °F
Pressure - On Test	960 psig	960 psig	960 psig	960 psig	960 psig	960 psig	960 psig	960 psig	960 psig	960 psig
Pressure - End of Test	969 psig	969 psig	969 psig	969 psig	969 psig	969 psig	969 psig	969 psig	969 psig	969 psig

Unrestrained Pipe

Sum:	Vo	2,144.86 gal	Vip1	2,156.93 gal	Vip2	2,154.93 gal
		274,542 oz.		276,087 oz.		275,631 oz.
Vo Unrestrained	1,333 gal	812 gal				
Fwp 1	1.002941	1.002941				
Fpp 1	1.002640	1.003547				
Fpt 1	1.000073	1.000073				
Fwt 1	1.000375	1.000375				
Fpwt 1 = Fpt/Fwt	0.999698	0.999698				
Vip 1 = Vo(Fwp)(Fpp)(Fpwt)	1,339.98 gal	816.95 gal				
Fwp 2	1.002969	1.002969				
Fpp 2	1.002665	1.003580				
Fpt 2	1.000255	1.000255				
Fwt 2	1.001542	1.001542				
Fpwt 2 = Fpt/Fwt	0.998715	0.998715				
Vip 2 = Vo(Fwp)(Fpp)(Fpwt)	1,338.73 gal	815.20 gal				

Sum:	Vo	251,736.25 gal	Vip1	252,933.65 gal	Vip2	252,946.77 gal
		32,222,239 oz.		32,375,507 oz.		32,377,187 oz.
Vo Unrestrained		161,135 gal	2,043 gal	30,589 gal	5,528 gal	133 gal
Fwp 1		1.002941	1.002941	1.002941	1.002941	1.002941
Fpp 1		1.002852	1.001935	1.002071	1.001948	1.001954
Fpt 1		1.000109	1.000109	1.000109	1.000109	1.000109
Fwt 1		1.000929	1.000929	1.000929	1.000929	1.000929
Fpwt 1 = Fpt/Fwt		0.999181	0.999181	0.999181	0.999181	0.999181
Vip 1 = Vo(Fwp)(Fpp)(Fpwt)		161,937 gal	2,051 gal	30,718 gal	5,551 gal	134 gal
Fwp 2		1.002969	1.002969	1.002969	1.002969	1.002969
Fpp 2		1.002852	1.001953	1.002090	1.001965	1.001972
Fpt 2		1.000109	1.000109	1.000109	1.000109	1.000109
Fwt 2		1.000929	1.000929	1.000929	1.000929	1.000929
Fpwt 2 = Fpt/Fwt		0.999181	0.999181	0.999181	0.999181	0.999181
Vip 2 = Vo(Fwp)(Fpp)(Fpwt)		161,945 gal	2,051 gal	30,717 gal	5,551 gal	134 gal

Combined Pipe

Sum:	Vo	253,881.10 gal	Vip1	255,090.58 gal	Vip2	255,101.70 gal
		32,496,781 oz.		32,651,594 oz.		32,653,018 oz.

COPY
OCT 08 2011
PG & E



Pipe Segment Volume Allowance Calculations

Company Pacific Gas and Electric Company	Job Number 41497337-T87B
Construction Co. Snelson	Job Number 41474005-T87B
Hydro. Test Co. Mlibar Hydro-Test Inc.	Project No. FY12-112
Test Section PG&E T-87B L-300A MP 449.75 - 450.7794	WATER
File Name RCP 61362 - T-87B L-300A, MP 449.75 - 450.7794	

Description	General Pipe Data									
	Segment					Segment				
	1	2	3	4	5	6	7	8	9	10
Restrained or Unrest ^{reins?}	Unrestrained	Unrestrained	Restrained	Restrained	Rest ^{reins?}	Restrained	Restrained	Restrained	Restrained	Restrained
Outside Diameter	34.000 in.	34.000 in.	34.000 in.	34.000 in.	35.000 in.	35.000 in.	34.000 in.	34.000 in.	34.000 in.	34.000 in.
Wall Thickness	0.500 in.	0.375 in.	0.344 in.	0.505 in.	0.500 in.	0.531 in.	0.500 in.	0.406 in.	0.505 in.	0.500 in.
Inside Diameter	33.000 in.	33.250 in.	33.312 in.	32.990 in.	35.000 in.	34.938 in.	33.000 in.	33.188 in.	32.990 in.	33.000 in.
Spec./Grade	API5L-X65	API5L-X65	API5L-X52	API5L-X60	API5L-X52	API5L-X52	API5L-X52	API5L-X60	API5L-X60	API5L-X65
Length Unrestrained	30.00 ft	18.00 ft								
Length Restrained			3.559 ft	46 ft	612 ft	111 ft	3 ft	1.082 ft	56 ft	27 ft
Temperature -- On Test	68 °F	68 °F	68 °F	68 °F	68 °F	68 °F	68 °F	68 °F	68 °F	68 °F
Temperature -- End of Test	69 °F	69 °F	69 °F	69 °F	69 °F	69 °F	69 °F	69 °F	69 °F	69 °F
Pressure -- On Test	964 psig	964 psig	964 psig	964 psig	964 psig	964 psig	964 psig	964 psig	964 psig	964 psig
Pressure -- End of Test	964 psig	964 psig	964 psig	964 psig	964 psig	964 psig	964 psig	964 psig	964 psig	964 psig

Unrestrained Pipe						
Sum:	Vo	2,144.86 gal 274,542 oz.		Vip1	2,159.22 gal 275,996 oz.	
Vo Unrestrained	1,333 gal	812 gal				
Fwp 1	1.002954	1.002954				
Fpp 1	1.002651	1.003561				
Fpt 1	1.000146	1.000146				
Fwt 1	1.000803	1.000803				
Fpwt 1 = Fpt/Fwt	0.999343	0.999343				
Vto 1 = Vo(Fwp)/(Fpp)(Fpwt)	1,339.53 gal	816.68 gal				
Fwp 2	1.002954	1.002954				
Fpp 2	1.002651	1.003561				
Fpt 2	1.000164	1.000164				
Fwt 2	1.000929	1.000929				
Fpwt 2 = Fpt/Fwt	0.999236	0.999236				
Vto 2 = Vo(Fwp)/(Fpp)(Fpwt)	1,339.39 gal	816.60 gal				

Restrained Pipe						
Sum:	Vo	251,735.25 gal 32,222,239 oz.		Vip1	252,967.33 gal 32,379,818 oz.	
Vo Restrained		161,135 gal	2,043 gal	30,588 gal	5,528 gal	133 gal
Fwp 1		1.002954	1.002954	1.002954	1.002954	1.002954
Fpp 1		1.002650	1.001939	1.002076	1.001953	1.001959
Fpt 1		1.000097	1.000097	1.000097	1.000097	1.000097
Fwt 1		1.000803	1.000803	1.000803	1.000803	1.000803
Fpwt 1 = Fpt/Fwt		0.999294	0.999294	0.999294	0.999294	0.999294
Vto 1 = Vo(Fwp)/(Fpp)(Fpwt)		161,958 gal	2,051 gal	30,720 gal	5,551 gal	134 gal
Fwp 2		1.002954	1.002954	1.002954	1.002954	1.002954
Fpp 2		1.002864	1.001943	1.002078	1.001955	1.001962
Fpt 2		1.000109	1.000109	1.000109	1.000109	1.000109
Fwt 2		1.000929	1.000929	1.000929	1.000929	1.000929
Fpwt 2 = Fpt/Fwt		0.999181	0.999181	0.999181	0.999181	0.999181
Vto 2 = Vo(Fwp)/(Fpp)(Fpwt)		161,941 gal	2,051 gal	30,717 gal	5,551 gal	134 gal

Combined Pipe						
Sum:	Vo	253,881.10 gal 32,496,781 oz.		Vip1	255,123.55 gal 32,655,814 oz.	
1 °F Change	28.08 gal	3,594.57 oz.				

COPY
OCT 08 2011
PG & E



Hydrostatic Test Pipe Data Table

Pipe Type	Length	Restrained / Unrestrained	Outside Diameter	Wall Thickness	Specification & Grade	Pipe Yield Pressure	Material	Joint Type	Seam Type
1	30 ft	Unrestrained	34.000 in.	0.5000 in.	API5L-X65	1,912 psig	Steel	Arc Weld	DSAW
2	18 ft	Unrestrained	34.000 in.	0.3750 in.	API5L-X65	1,434 psig	Steel	Arc Weld	DSAW
3	3,559 ft	Restrained	34.000 in.	0.3440 in.	API5L-X52	1,052 psig	Steel	Arc Weld	DSAW
4	45 ft	Restrained	34.000 in.	0.5050 in.	API5L-X60	1,782 psig	Steel	Arc Weld	DSAW
5	612 ft	Restrained	36.000 in.	0.5000 in.	API5L-X52	1,444 psig	Steel	Arc Weld	DSAW
6	111 ft	Restrained	36.000 in.	0.5310 in.	API5L-X52	1,534 psig	Steel	Arc Weld	DSAW
7	3 ft	Restrained	34.000 in.	0.5000 in.	API5L-X52	1,529 psig	Steel	Arc Weld	DSAW
8	1,082 ft	Restrained	34.000 in.	0.4060 in.	API5L-X60	1,433 psig	Steel	Arc Weld	DSAW
9	56 ft	Restrained	34.000 in.	0.5050 in.	API5L-X60	1,782 psig	Steel	Arc Weld	DSAW
10	27 ft	Restrained	34.000 in.	0.5000 in.	API5L-X65	1,912 psig	Steel	Arc Weld	DSAW
11	40 ft	Unrestrained	34.000 in.	0.5000 in.	API5L-X65	1,912 psig	Steel	Arc Weld	DSAW

Hydrostatic Test Project Owner & Participants

Address		Pacific Gas and Electric Company 350 N. Wiget Walnut Creek, CA 94598 Attention: Redacted	Job Number 41497337-T87B
Construction Company		Snelson 601 West State Street Sedro-Wooley, WA 98284 Attention: Redacted	Job Number 41474005 -T87B
Hydrostatic Test Co.		Milbar Hydro-Test Inc. P O Box 7701 Shreveport, La. 71137-7701	Project No. FY12-112
Test Section		PG&E T-87B L-300A, MP 449.75 - 450.7794 From: 0+00 To: 54+63	
File Name		RCP 61362 - T-87B, L-300A, MP 449.75 - 450.7794	

Part II – Test Data (TO BE PREPARED BY PERSON SUPERVISING TEST AT TIME OF TEST)				Note: Minimum test pressure and duration are not to be changed without written approval.			
Time and Date Test Pressure Reached	10/8/11 9:08 AM	Elevation at Test Point	460 ft	Min. Required Test Press At Test Point (1)	947.43 psig	Max. Allowable Test Press at Test Point (4)	971.20 psig
Time and Date Test Ended	10/8/11 5:23 PM	Max. Elevation in Test Section	461 ft	Min. Indicated Test Pressure (2)	950.00 psig	Max. Indicated Test Pressure (5)	969.00 psig
Actual Duration of Test	8 hours 15 minutes	Min. Elevation in Test Section	322 ft	Min. Test Pressure at Max. Elevation (3)	959.57 psig	Max. Test Pressure at Min. Elevation (6)	1,028.80 psig

COPY

OCT 08 2011

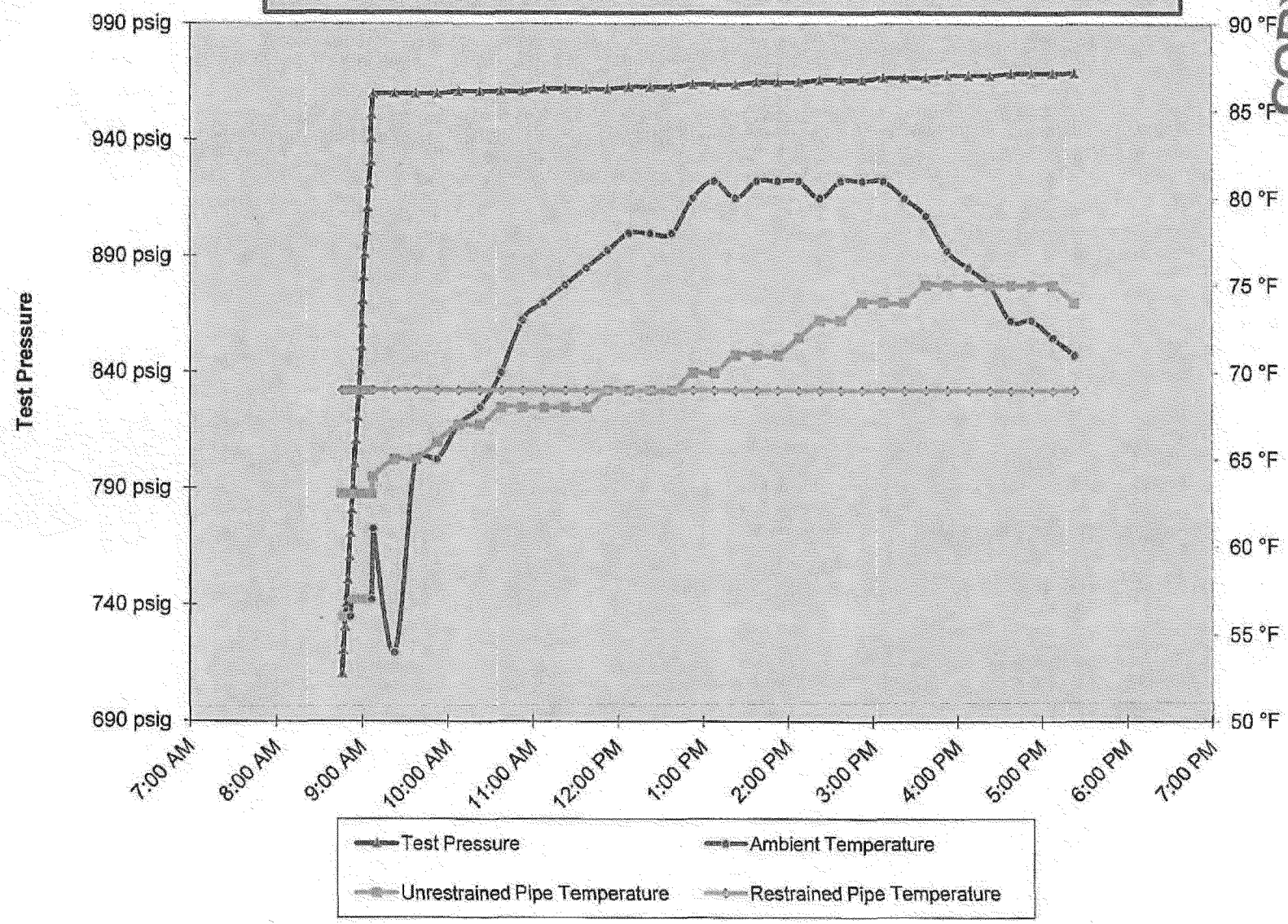
PG & E

PG&E T-87B L-300A, MP 449.75 - 450.7794

COPY

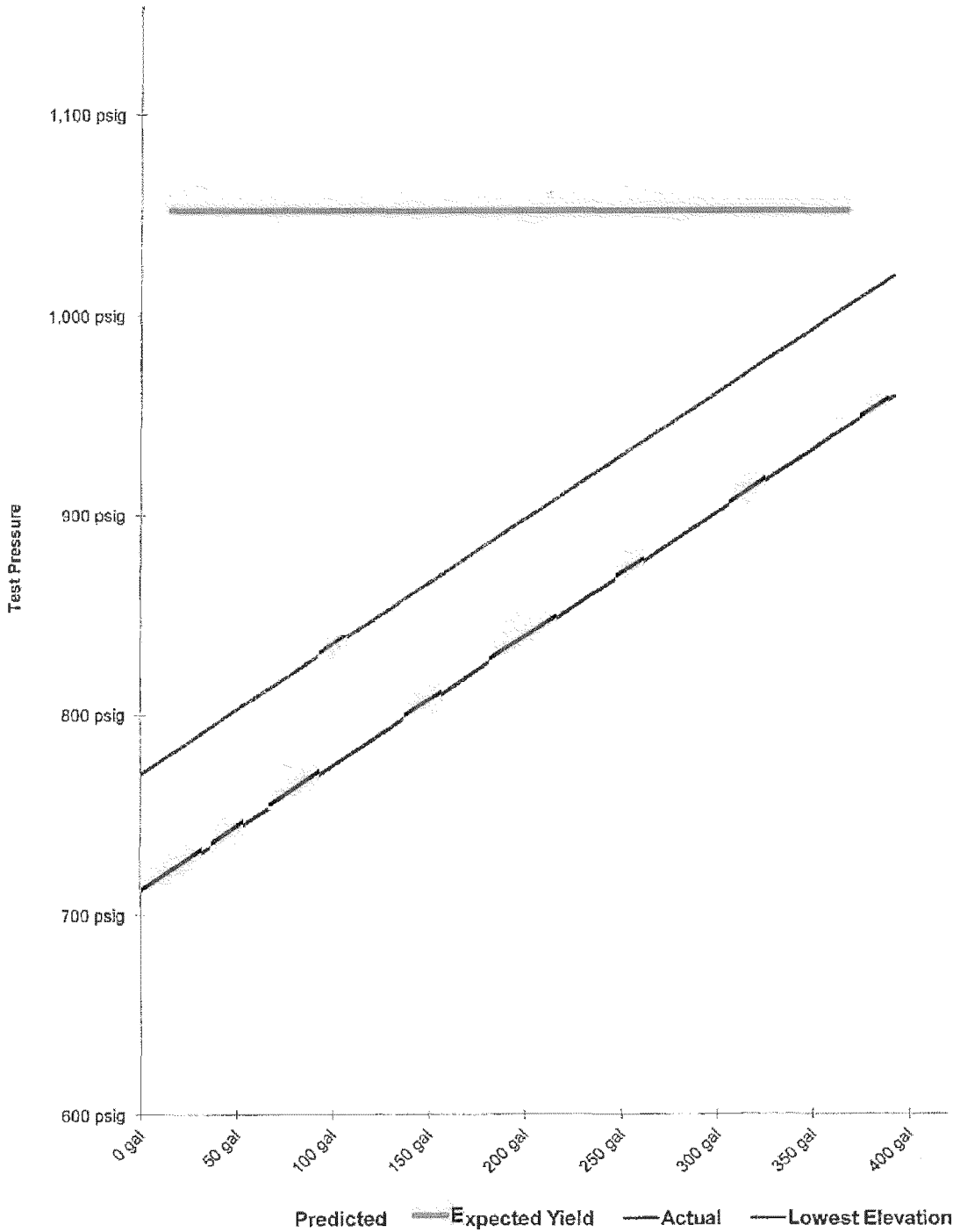
OCT 08 2011

PG&E

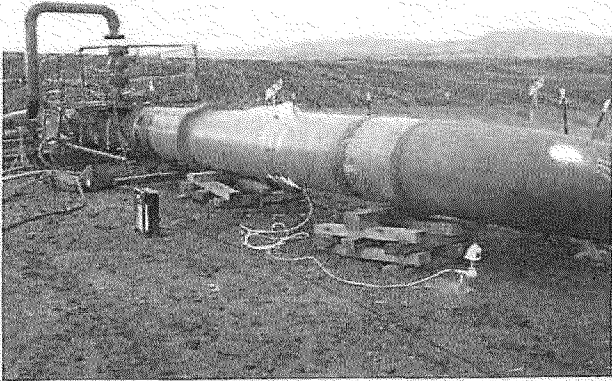


C:\1__PG&E FILES\TESTS\KTest T-87B-Red
T-87B version 8.30.2011
PlotT

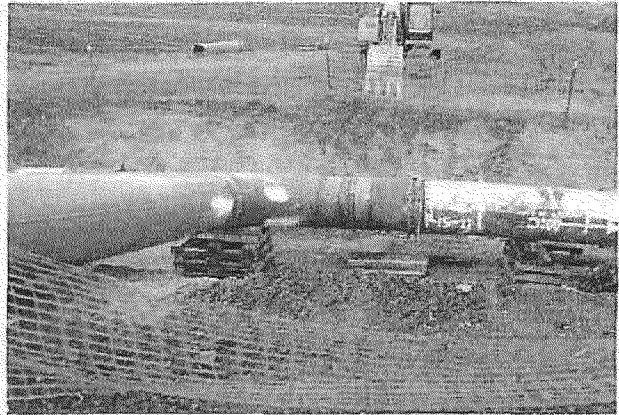
Spike Pressure Test
Stress Strain Curve -- PG&E T-87B L-300A, MP 449.75 - 450.7794



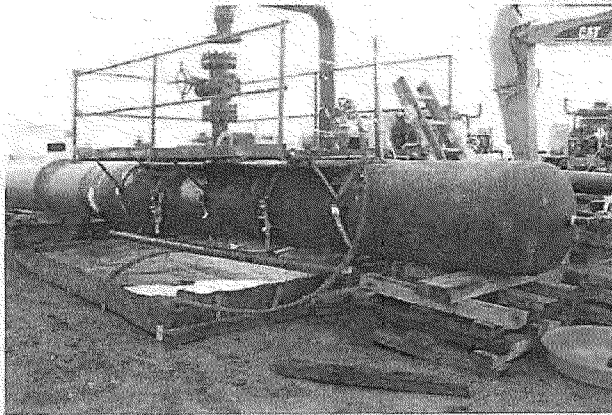
COPY
OCT 08 2011
PG & E



Test T-87B Test Head Connects



Test T-87B Test Head Tie In



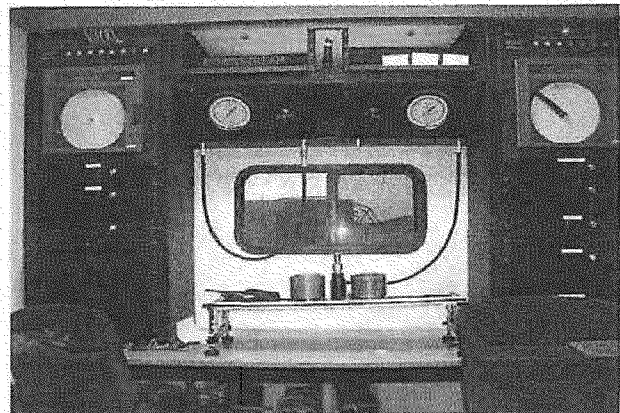
Test T-87B Test Head.



Test T-87B Pressure Chart Recorder



Test T-87B Restrained Chart Recorder



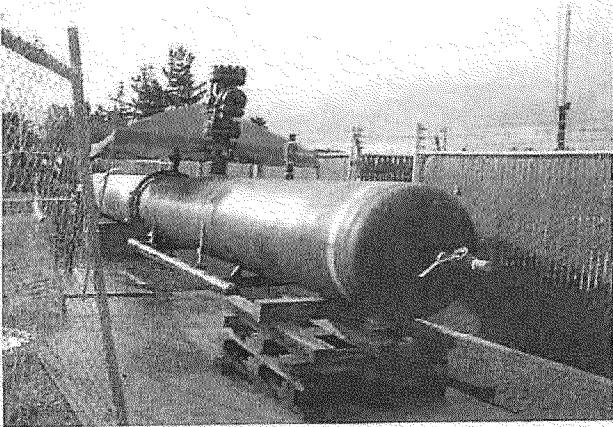
Test T-87B Dead Weight

COPY

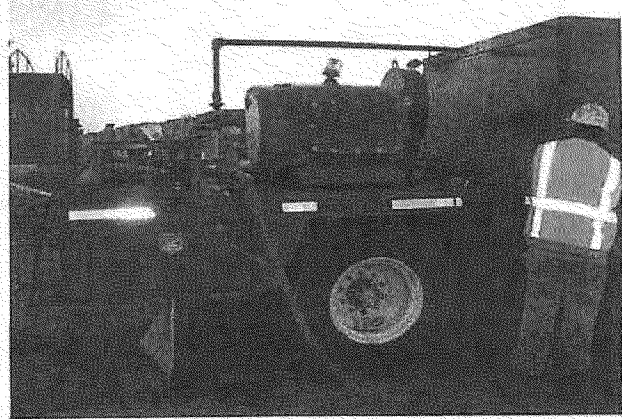
OCT 08 2011

PG & E

RCP



Test T-87B Test End



Test T-87B Pump Truck

COPY
OCT 08 2011
PG 8& E