

Pacific Gas and Electric Company
250 Megawatt Solar Photovoltaic (PV) Program
Year Three Sites

Project Update

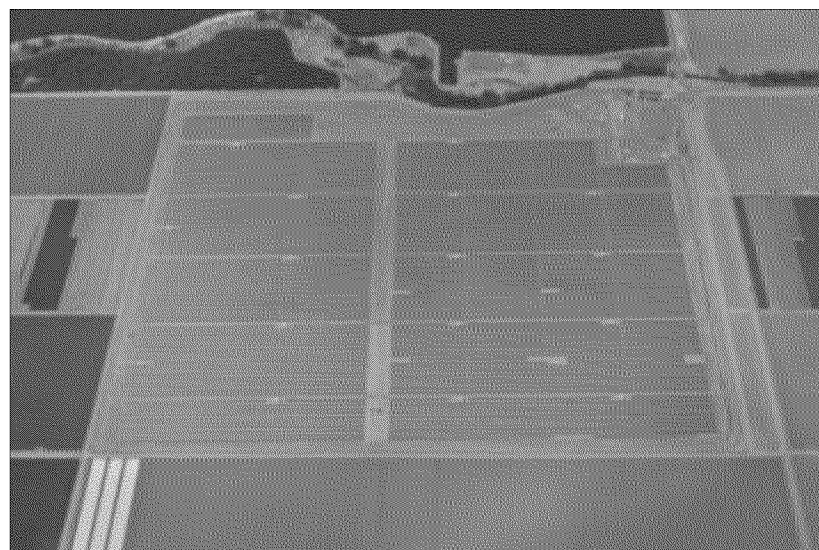
September 2012



Program Year One and Two Solar PV Update

- All three Program Year One sites are operational
- All three Program Year Two sites are operational

Solar Station	MWs	Construction Completion Status (as of September 2012)
Huron	20	100 percent
Giffen A	10	100 percent
Cantua	20	100 percent



Cantua Solar Station

Program Year Three Solar PV Overview

- **Three Sites**
 - Gates: 20 MW
 - Guernsey: 20 MW
 - West Gates: 10 MW

- **Location**
 - Fresno County and Kings County – Western Valley
 - Local site review process required under GO-131D is complete for all three sites and Fresno County (West Gates and Gates) and Kings County (Guernsey) concurs with selected sites



Site Selection Criteria

- Environmental
 - Biological resources
 - Cultural resources
 - Proximity to sensitive receptors
 - Land use
- Engineering/Land
 - Solar radiation
 - Slope
 - Substation proximity and capacity
 - Cost of interconnection
 - Flood zone/Water table
 - Land cost

Environmental Review—Key Topics

Potential Impact	Assessment Methodology	Conclusion
Biological Resources	<ul style="list-style-type: none"> •Conducted on-site biological surveys •Conducted protocol-level Swainson’s hawk surveys • Reviewed California Natural Diversity Database •Consulted with resource agencies 	<ul style="list-style-type: none"> • No sensitive species identified at the three locations • Received concurrence from CDFG and USFWS for the three sites
Cultural and Paleontological Resources	<ul style="list-style-type: none"> •Conducted archival records search •Contacted Native American Heritage Commission for the presence of sacred sites •Conducted pedestrian surveys of areas of potential impact 	<ul style="list-style-type: none"> • No cultural or paleontological resources identified for the three sites
Sensitive Receptors	<ul style="list-style-type: none"> •Reviewed locations of sensitive receptors 	Rural residences identified within 1 mile of the project areas
Land use	<ul style="list-style-type: none"> •Reviewed soils designation •To satisfy farm community concerns we are avoiding farmland under a Williamson Act Contract •Trying to avoid prime farmland to the extent feasible 	<ul style="list-style-type: none"> • Gates and West Gates will be constructed on PG&E – owned land • No Williamson Act contracts for the three sites



Consultations and Outreach

- **Project Specific**

- Fresno County Department of Public Works and Planning
- Kings County Community Development Department
- California Department of Fish and Game (San Joaquin Valley)
- U.S. Fish and Wildlife Service, Sacramento Field Office, Endangered Species Program, San Joaquin Valley Branch
- San Joaquin Valley Air Pollution Control District

- **Program Specific**

- Fresno County Farm Bureau
- Fresno County Board of Supervisors
- Kings County Farm Bureau
- Kings County Board of Supervisors



*Pacific Gas and
Electric Company™*

Gates Solar Station



- 120-acre site
- Gen-tie is approximately 2 miles long

Guernsey Solar Station



- 160-acre site
- Gen-tie is approximately 4.5 miles long

West Gates Solar Station



- 55-acre site
- Gen-tie is approximately 0.3 mile long (within PG&E substation property)



Next Steps for Program Year Three

- Received all ministerial permits or required approvals for Gates Solar Station Project, West Gates Solar Station Project and Guernsey Solar Station
- Grading to start at West Gates Solar Station and Guernsey Solar Station in September 2012
- Continued coordination with local, state and federal agencies, as needed

