

Please visit us at www.sce.com

Energy Benchmarking: Benchmark Your Building for a Better Bottom Line

Building owners or property managers understand the importance of finding ways to improve efficiency and reduce operating costs. Benchmarking your building's energy use is one of the easiest and most effective ways to identify ways of improvement, and it takes little or no effort from you other than signing up at the ENERGY STAR® website.

What is Energy Benchmarking?

Benchmarking energy use is the first step to assess a building's energy performance and to measure ongoing progress. It also provides business customers with the ability to:

- ◆ Assess their building's energy performance, which is a key step to understanding and reducing energy consumption and the building's carbon footprint.
- ◆ Conduct an "apples to apples" comparison of a building's energy performance
- ◆ Use the energy information of a building in the same way as the Miles Per Gallon (MPG) assessment of a car's operating performance

How Businesses Benefit from Energy Benchmarking

- ◆ Enables a comparison of a building's energy use with other similar building types
- ◆ Helps determine if a building is using too much energy
- ◆ Establishes a continuous improvement energy management process for your buildings
- ◆ Assists customers with energy use planning including goal setting, targets, and timelines
- ◆ Assesses effectiveness of current operations, policies and practices
- ◆ Verifies and monitors pre- and post-project energy use through changes in operations/equipment
- ◆ Tracks greenhouse gas (GHG) emissions and energy costs

Get started

The more control you have over your energy costs, the better it will be for your bottom line. To learn more about energy benchmarking your facility with ENERGY STAR®, visit www.energystar.gov/benchmarking or call SCE at 1-800-736-4777.



Safe Portable Generator Hook-Up

Connecting a portable generator to your home's electrical wiring is dangerous and can cause serious injuries or electrocution.

Do not hook up a generator directly to an electrical panel. The safe way is to plug the electrical equipment into a portable generator using a properly sized extension cord approved by Underwriters Laboratories (UL).

If your needs require a generator to be wired directly to your home's electrical system, California state law mandates that you notify SCE. We also recommend that you enlist the service of a qualified electrician to perform the task.

For more information please visit www.sce.com/generator.

Get Green for Going Green

Are you interested in learning how a solar energy system can help lower your business' operating cost? Would you like to add more "green" to your business' bottom line and improve your company's reputation for environmental stewardship?

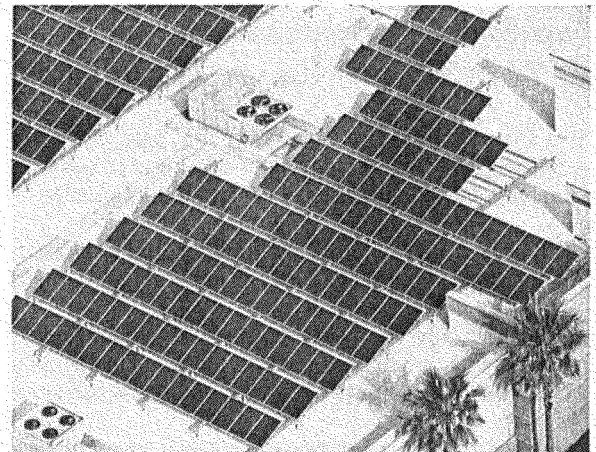
We are pleased to offer free California Solar Initiative (CSI) Commercial Solar workshops designed for energy managers who want to help their companies "go solar." Classes are offered monthly throughout 2012.

Classes will be held at SCE's Energy Education Center in Irwindale.

Topics that will be covered include:

- ◆ Solar energy basics
- ◆ Benefits of installing a solar energy or solar hot water heating system
- ◆ Tax credits and other financial incentives that can help reduce up-front costs

Pre-registration is required and space is limited. Visit www.sce.com/ctac to view the complete course description and register today.



My Account: Your Energy Control Panel

SCE has a great way to help you save time, postage and trees – and your most recent statement is always just a click away. Manage your account(s) online at SCE.com with My Account, a secure service provided to you free of charge.

If you currently receive a bill from SCE, you're eligible to register for My Account. Choose a personal user ID and password. You'll get access to view all your SCE accounts online.

Here are some My Account benefits:

- ◆ Access all your accounts with one password.
- ◆ View and analyze up to 36 months of billing, payment, and usage history.
- ◆ Check meter information and usage details for any statement date.
- ◆ Calculate usage between statement dates.
- ◆ Export usage data into tools like Excel, to take a closer look.
- ◆ Review detailed account information, any time day or night. We'll give you your current account balance and due date and next statement date, and let you know if your account is past due. If you make a payment today, it will show up on your account in 1-2 business days.
- ◆ View your SCE deposit status.

For data security purposes, if you're a large business customer or an Energy Service Provider, contact your SCE Account Representative to get enrolled in My Account. All other customers can register at www.SCE.com.

Accessing Multiple SCE Customer Accounts

When you enroll in My Account, you'll get a list of all your SCE customer accounts. You don't have to enroll each individual account in an SCE online product or service.

The enrollment screen will tell you if an account is not eligible for enrollment in a certain product or service. For your protection, SCE allows only one user at a time to access each individual customer account number – so only one user can view or pay the statement online at the same time.

Save valuable time. Take advantage of this efficient way to view and analyze your account information. To learn more about My Account, visit www.sce.com/_MySCEcom/LearnMore.

Make a Voluntary Contribution Today For a Cleaner Tomorrow

How can you help the nation's most populous state become a more environmentally friendly place to live and work? Simply make a voluntary contribution toward technologies that will capture greater amounts of renewable energy from resources such as the sun, wind, biomass, and geothermal formations.

Your contribution will help California meet its goal of generating more renewable energy and help educate consumers about the benefits of investing in renewable energy today for a cleaner environment tomorrow.

To make your voluntary contribution, enclose a check for any amount, payable to the Renewable Resource Trust Fund, in the return envelope with your bill payment. Upon receipt, we will forward your contribution to the California Energy Commission, which administers this fund. You can also mail your contribution directly to:

California Energy Commission
Renewable Resource Trust Fund
P.O. Box 944295
Sacramento, California 94244-2950

For more information, please call **1-800-555-7794**, or visit www.sce.com/cecfund.

Is Your Water Heater Safely Strapped In?

You and your household members may face a serious threat of fire, explosion, or electrocution if your water heater overturns or suffers damage to electrical wiring or plumbing during a disaster, such as an earthquake.

For that reason, California law requires that all water heaters must be braced, anchored, or strapped to avoid falling during an emergency situation.

To safely secure your water heater and to comply with California's safety requirements, have a licensed professional install an approved restraint kit to your water heater. Kits may be found at your local hardware or home improvement store.

Learn more about water heater safety at www.sce.com/waterheater.

