

EL PASO NATURAL GAS COMPANY

Memorandum

File (022)

Date: October 11, 1974

From: J. W. Rowland

Place: Engineering Department
Codes & Standards Division

Subject: MAOP of 34" [Redacted] (1113)
VA-15 Through [Redacted]

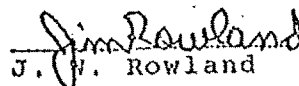
This review is for the purpose of evaluating the present maximum allowable operating pressure of 660 psig on the subject line segment.

An area extending from [Redacted] eastward to E.S. 902 + 50 presently has a population density level equal to a Class 2 Location. The class location limit had previously been at E.S. 886 + 29.5 during the period near 1967. The segment was constructed in 1955 of 34" O.D., .406" w.t., X52 and 34" O.D., .500" w.t., X52 grade pipe. The limiting pressure of the pipe in the Class 2 Location is 745 psig. In the present system configuration, the operation of Line 1113 must be in concert with Line 1104. Thus, the lower limiting design pressure of the 30" O.D., .324 w.t., X52 grade pipe found in the Class 2 Location on Line 1104 dictates that 674 psig is the minimum design pressure for operation of the unisolated Line 1113.

The line segment from approximately E.S. 917 + 22 eastward to Valve 16, E.S. 855 + 75, was hydrostatically tested in February, 1957 to a minimum pressure of 1020 psig for an unknown period. The line was subsequently gas tested from Valve 15 on Line 1104 to a valve near the P.G.&E. compressor station. The test was to a minimum pressure of 880 psig for a period of 24 hours in March, 1957.

The operating pressure of the segment has been controlled at Valve 15 since a date prior to 1965. The exact date could not be determined. [Redacted] of Systems Dispatching indicated in a conversation that he felt the operating pressure of the segment during the period July 1, 1965 to July 1, 1970 was substantially higher than 660 psig on numerous occasions. No records could be found in the Home Office Dispatching Center, the Topock Dispatching Office, nor the Measurement Department that could substantiate this.

In view of the information gathered, the segment maximum allowable operating pressure is correctly established at 660 psig in compliance with Department of Transportation standards.


J. W. Rowland

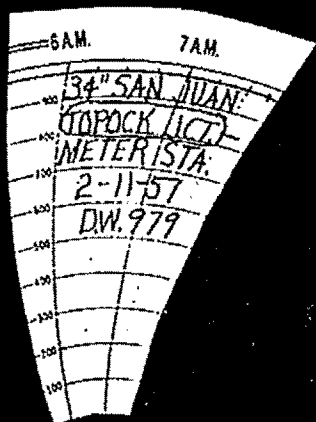
JWR:cvg
c: T. H. Pofahl

CODE PRESSURE TESTS

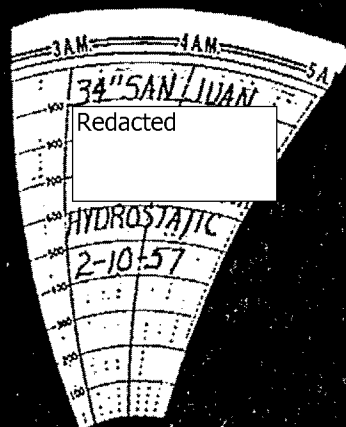
112-98-1012

34" From Williams Station to Topock

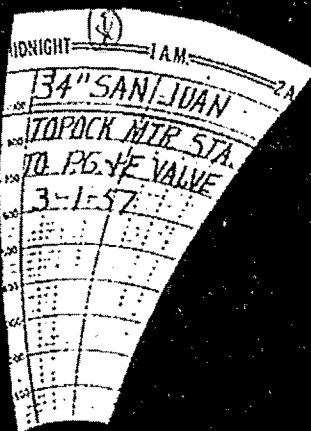
Gas and Water Tests



Franconia Jct. - Mtr. Sta.
Franconia Jct.
Gas Test



Mtr. Sta. to P.G. & E.
Bridge
Water Test



Mtr. Sta. - P.G. & E. Valve
Meter Station
Gas Test

1113

1955-56

13071 ORIGINAL INSTALLATION

1957

16014

P. G. and E. Redacted

2/10

HYDROSTATIC TEST - Redacted

115.600 ✓

2/11

GAS TEST - Franconia Jet to Meter Sta.

98.366 ✓

3/1

GAS TEST - Topock MS to P. G. and E. Valve

115.600 ✓

1966

7/7

S-3089

I-40 ADJ Bridge Anchors

1971

4/16

S-4127

I-40 ADJ. HW 95 and Install Valve 13C
w/controls for pressure regulation.

106.731 ✓

4/22

S-3359

Set Valve 13C W/controls for pressure Reg.
BCS-4123

107.096 ✓