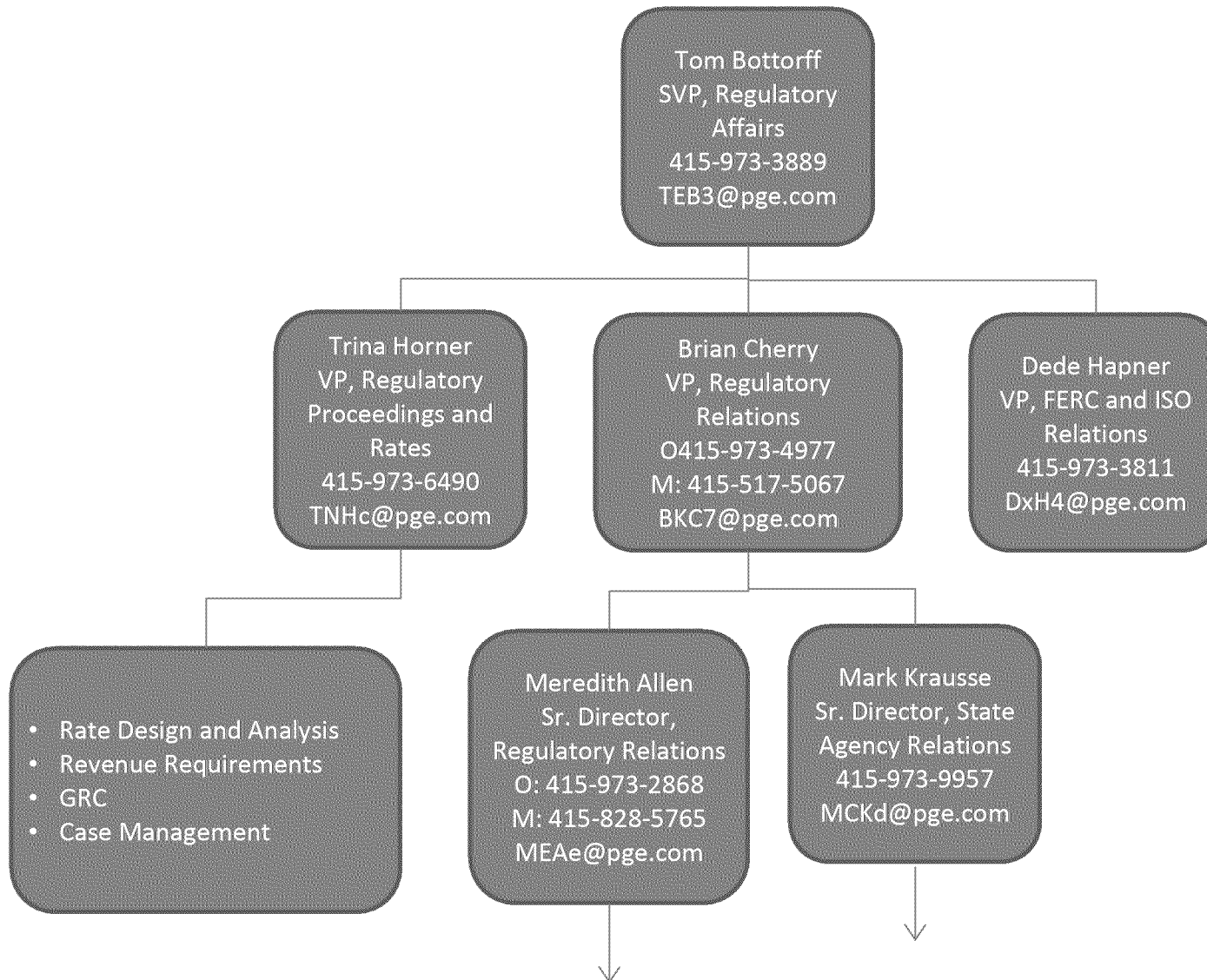


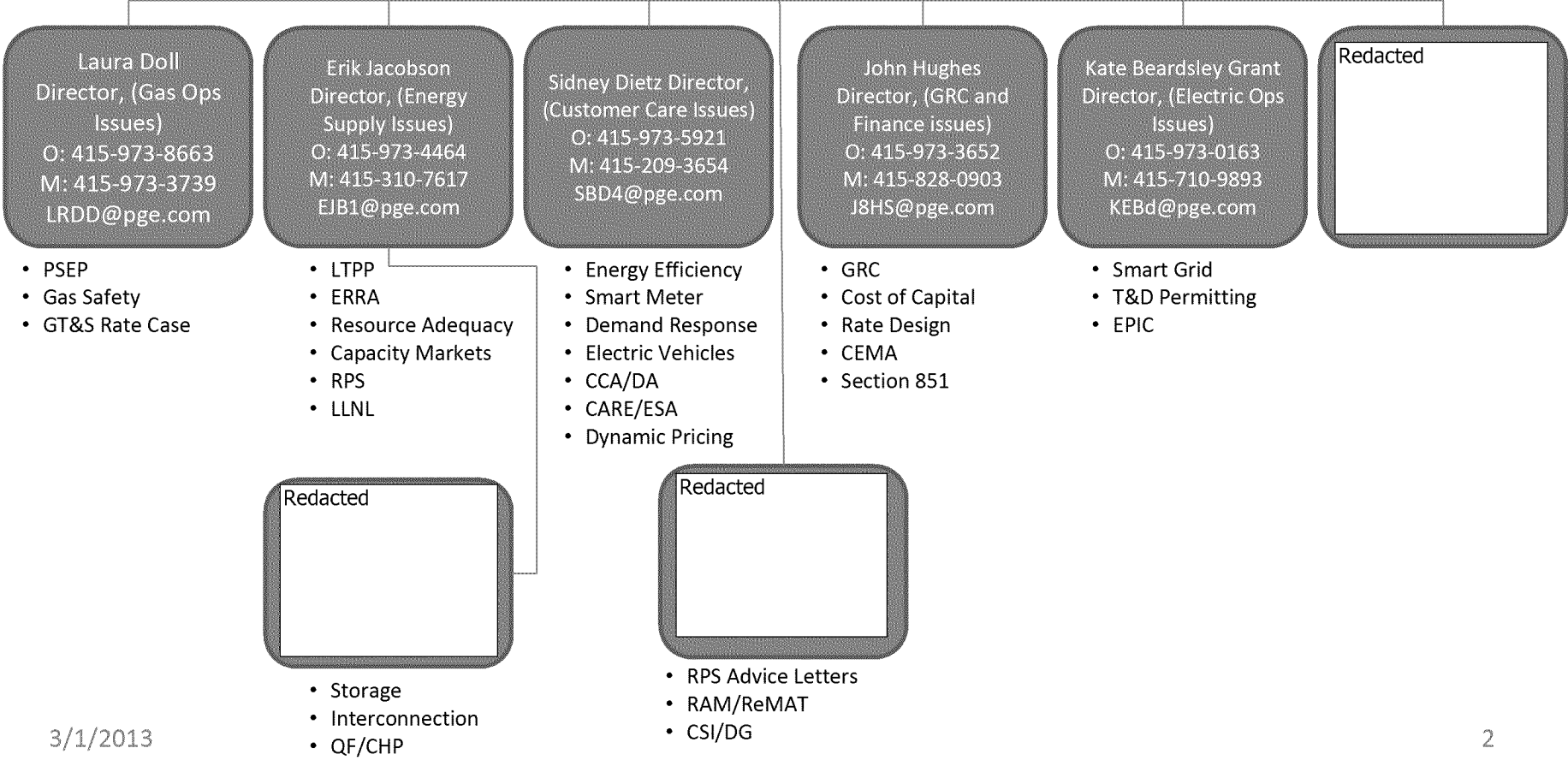
PG&E Regulatory Affairs Organization



3/1/2013

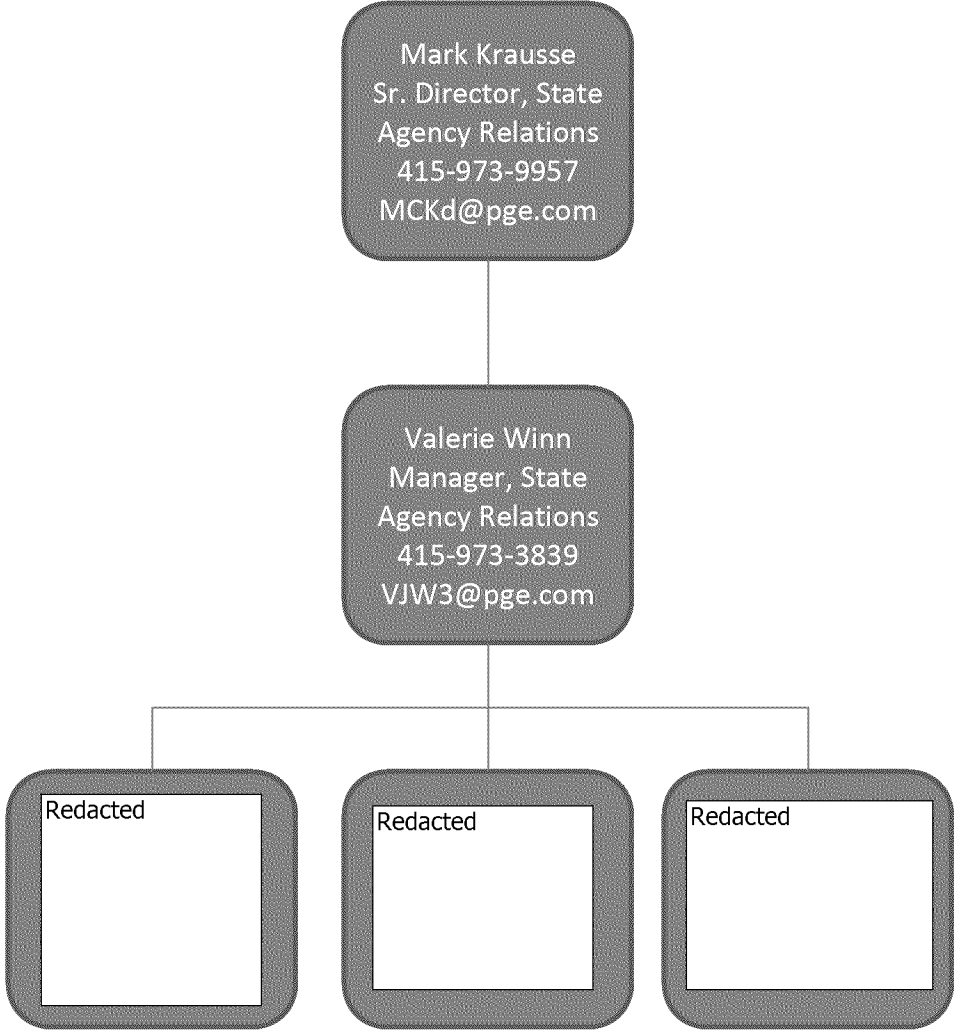
PG&E Regulatory Affairs Organization (cont'd)

Meredith Allen
Sr. Director, Regulatory
Relations
O: 415-973-2868
M: 415-828-5765
MEAe@pge.com

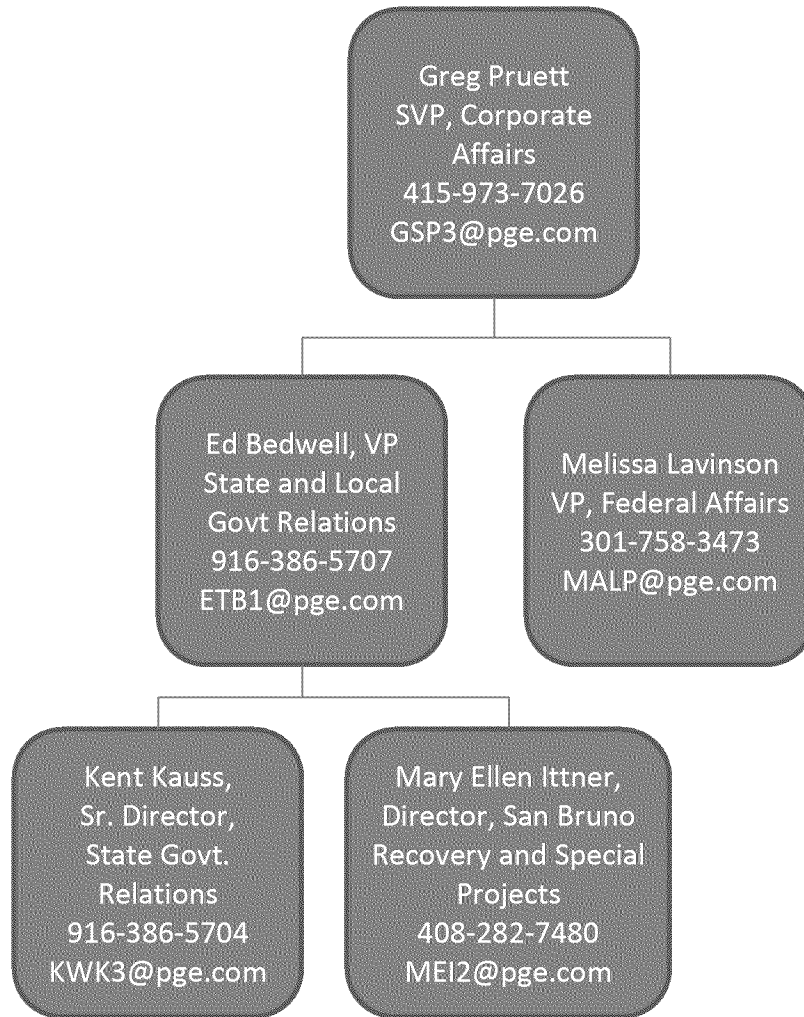


3/1/2013

PG&E Regulatory Affairs Organization
(cont'd)



PG&E Corporate and Legislative Affairs Organization



3/1/2013

4