

**ATTACHMENT A**

**SDG&E RESPONSE TO TURN DATA REQUEST#3**

**TURN DATA REQUEST  
TURN-SDG&E-DR-03  
RATE REFORM OIR – R.12-06-013  
SDG&E RESPONSE  
DATE RECEIVED: July 2, 2013  
DATE RESPONDED: July 22, 2013**

The responses to this data request refer to the supplemental filing SDG&E submitted, per the request of Energy Division, on July 15<sup>th</sup> 2013.

1. Using the same inputs identified in the July 1 filing, please provide a bill impact analysis showing the difference between current rates and the following:
  - a. Step 5 basic service fee scenario
  - b. Step 5 demand-differentiated basic service fee
  - c. Step 5 commodity costs recovery through TOU rate
  - d. Step 5 basic service fee scenario + Step 5 commodity cost recovery through TOU rate
  - e. Step 5 demand-differentiated basic service fee + Step 5 commodity cost recovery through TOU rate

**SDG&E Response 01:**

On July 15, 2013, SDG&E submitted a supplemental response pursuant to Energy Division's request. As noted both in SDG&E's July 1<sup>st</sup> and July 15<sup>th</sup> submittals, the scenarios presented do not represent SDG&E's Optimal Residential Rate Design Proposal. SDG&E's proposal for an Optimal Residential Rate Design, filed on May 29, 2013, is one that meets the following criteria:

- Utilities charge for the services they provide;
- Rates are designed to recover costs on the same basis as they are incurred; and,
- Incentives or subsidies that have been deemed necessary to further public policy objectives are separately and transparently identified.

Further, these illustrative scenarios have been developed in the absence of customer and stakeholder input and in the absence of knowledge concerning the conditions that will exist when future filings are made. SDG&E, as part of its Optimal Rate Design Proposal, emphasized the need to accommodate and seek ways to mitigate bill impacts in individual rate setting proceedings based on stakeholder input and then-existing conditions thereby necessitating a transition path that would continually re-examine context and priorities with each move towards more accurate prices. In its July 1<sup>st</sup> submittal in response to the ALJ Ruling, SDG&E provided scenarios reflecting a 5-step transition looking at individual rate components for the following:

- Distribution recovery through a basic service fee;
- Distribution recovery through a demand differentiated basic service fee; and
- Commodity recovery through a time-of-use (TOU) rate.

In SDG&E's July 15<sup>th</sup> submittal, SDG&E provided illustrative bundled rate designs associated with its July 1<sup>st</sup> filing, specifically, 5-step transition looking at the total rate impact of the following scenarios:

**TURN DATA REQUEST  
TURN-SDG&E-DR-03  
RATE REFORM OIR – R.12-06-013  
SDG&E RESPONSE  
DATE RECEIVED: July 2, 2013  
DATE RESPONDED: July 22, 2013**

**Response to Question 1 (Continued)**

1. Distribution recovery through a basic service fee (BSF)
  - I. With commodity flat rate
  - II. With commodity TOU rate
  
2. Distribution recovery through demand differentiated BSF
  - I. With commodity flat rate
  - II. With commodity TOU rate

The following pages contain the illustrative bill impact graphs and data tables for Step 5 of each of the four scenarios as compared to current. In each scenario, the percentage impact from current as well as the average monthly dollar impact from current are included to give the best illustration of the relative bill impacts. For instance, a large percentage impact may correspond to a small dollar impact.

**TURN DATA REQUEST  
TURN-SDG&E-DR-03  
RATE REFORM OIR – R.12-06-013  
SDG&E RESPONSE  
DATE RECEIVED: July 2, 2013  
DATE RESPONDED: July 22, 2013**

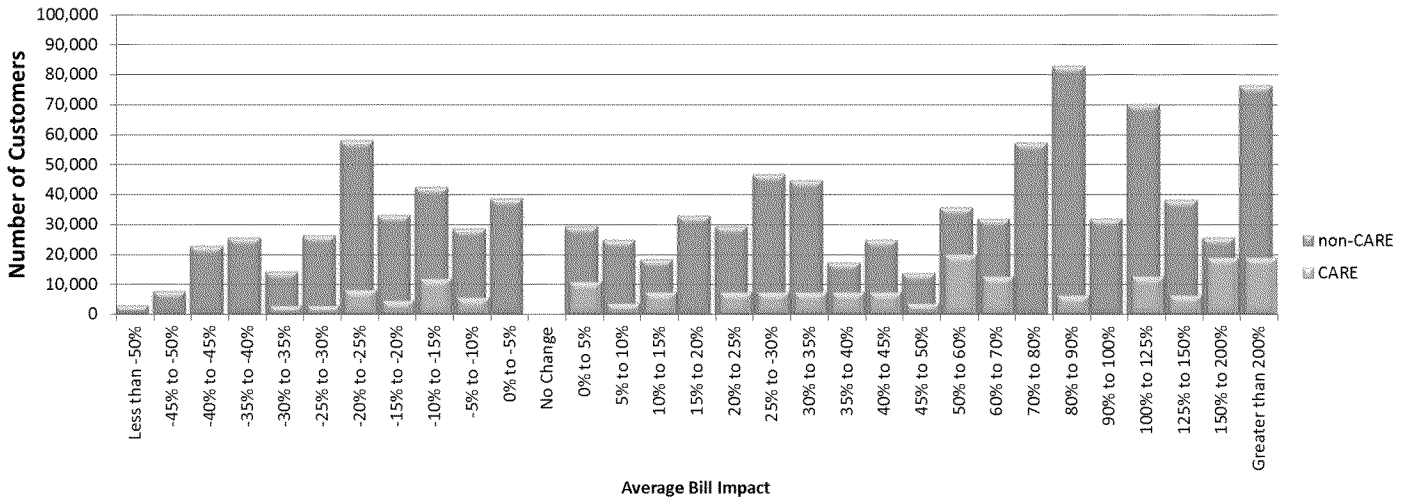
**STEP 5 VERSUS CURRENT ILLUSTRATIVE BILL IMPACT GRAPHS**

1. Distribution recovery through a basic service fee (BSF)

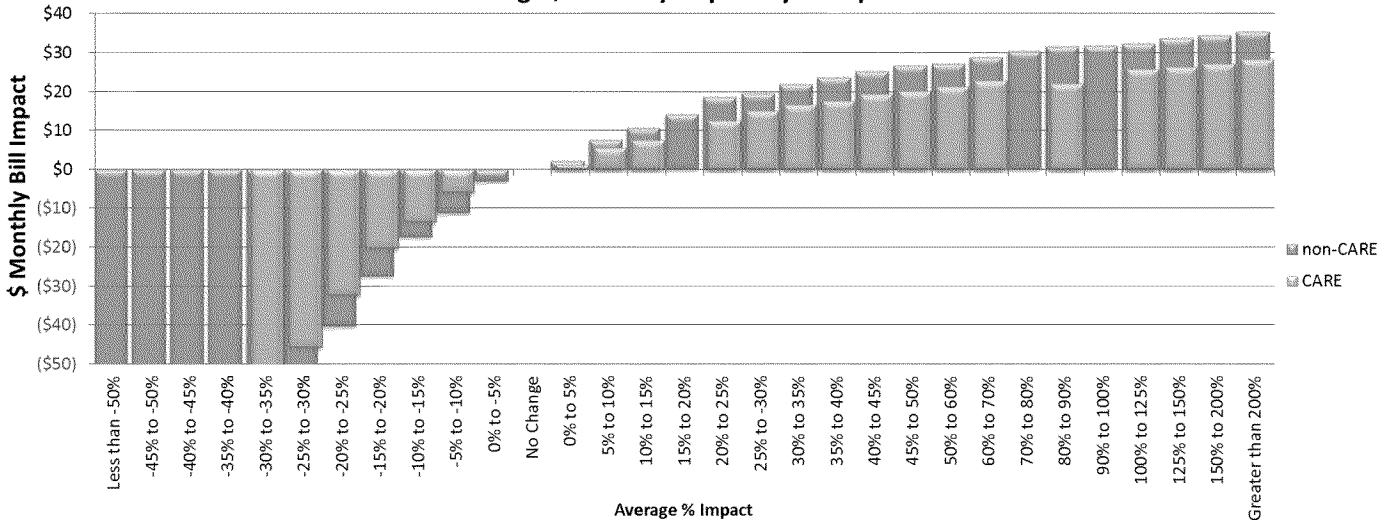
I. With commodity flat rate

The non-CARE customers in this sample seeing above 200% change from current as compared to step 5 would see an average monthly impact of \$36, which would be about \$7.20 per transitional step in the 5-step progression. The CARE customers in this sample seeing above 200% change from current as compared to step 5 would see an average monthly impact of \$28, which would be about \$5.60 per transitional step in the 5-step progression.

**Number of Customers by % Impact**



**Average \$ Monthly Impact by % Impact**



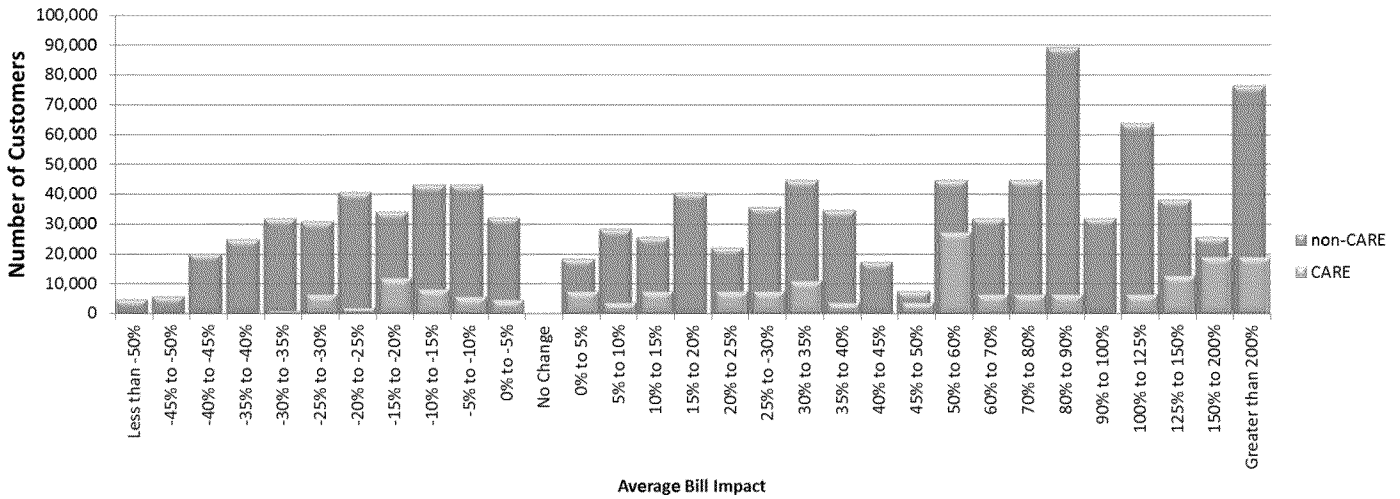
**TURN DATA REQUEST  
TURN-SDG&E-DR-03  
RATE REFORM OIR – R.12-06-013  
SDG&E RESPONSE  
DATE RECEIVED: July 2, 2013  
DATE RESPONDED: July 22, 2013**

1. Distribution recovery through a basic service fee (BSF)

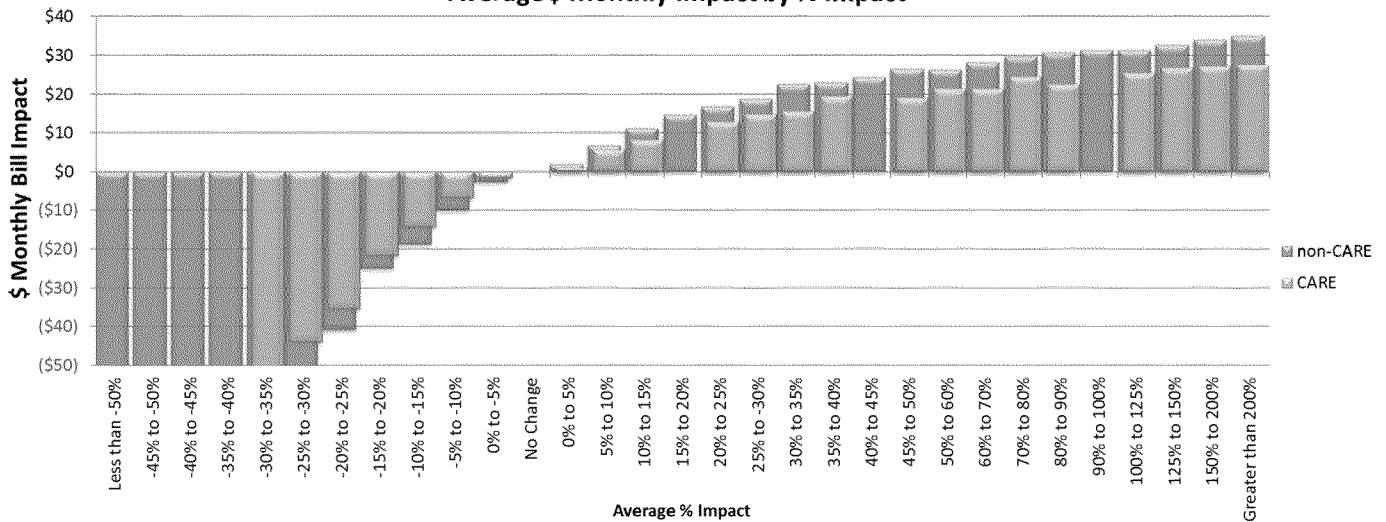
II. With commodity TOU rate

The non-CARE customers in this sample seeing above 200% change from current as compared to step 5 would see an average monthly impact of \$35, which would be about \$7.00 per transitional step in the 5-step progression. The CARE customers in this sample seeing above 200% change from current as compared to step 5 would see an average monthly impact of \$28, which would be about \$5.60 per transitional step in the 5-step progression.

**Number of Customers by % Impact**



**Average \$ Monthly Impact by % Impact**

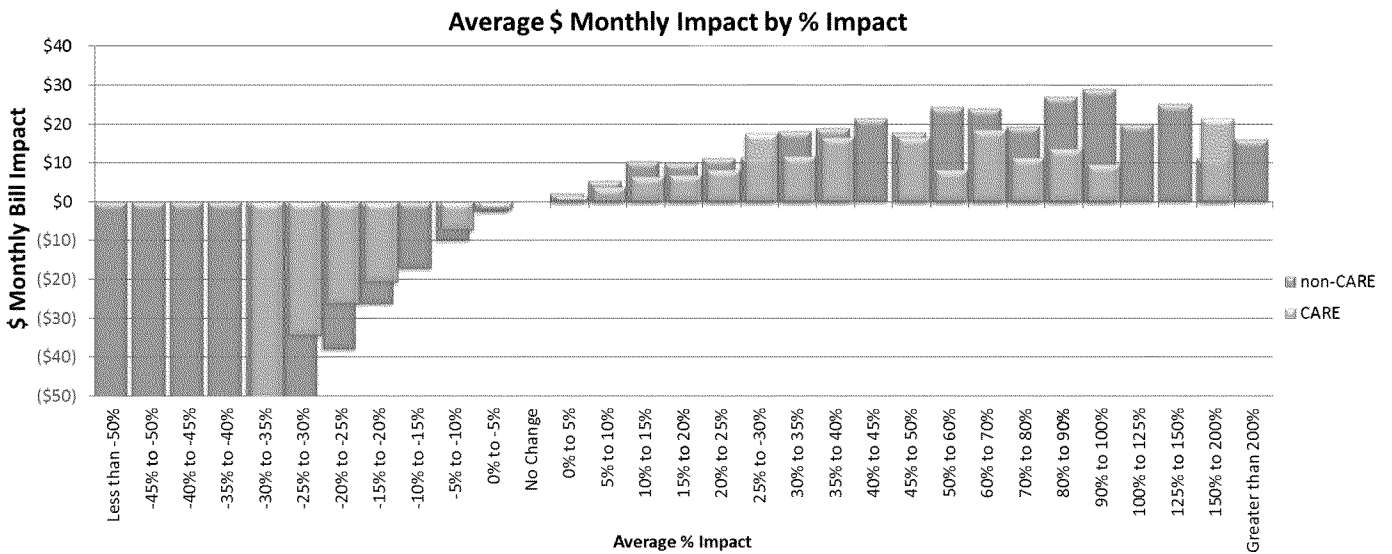
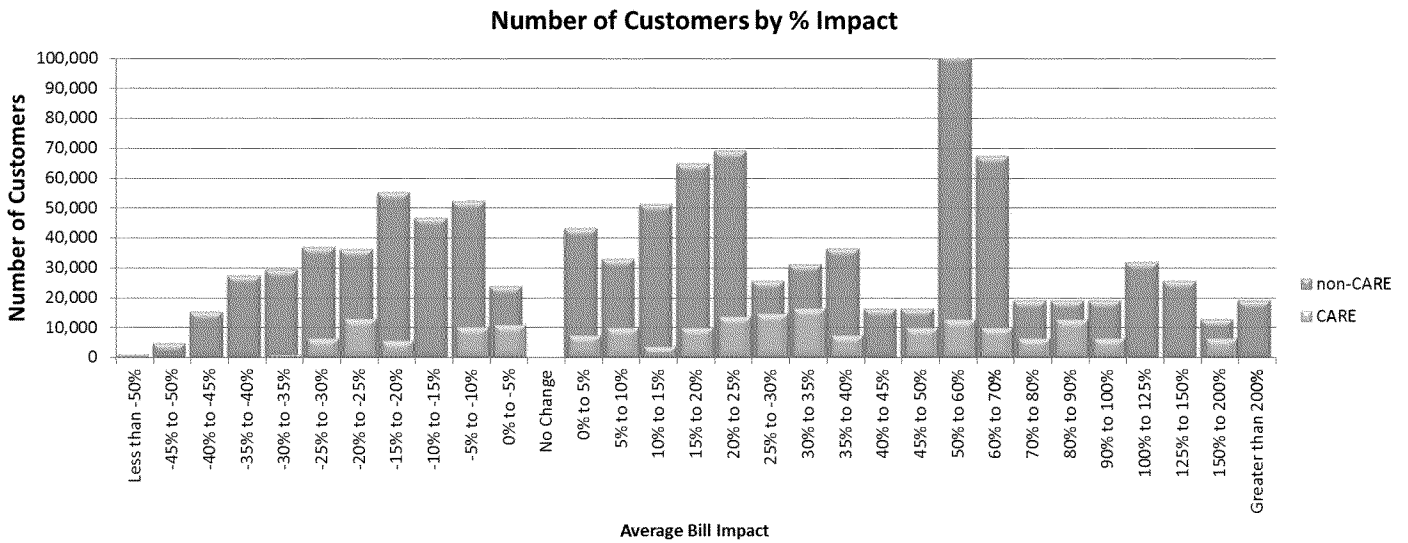


**TURN DATA REQUEST  
TURN-SDG&E-DR-03  
RATE REFORM OIR – R.12-06-013  
SDG&E RESPONSE  
DATE RECEIVED: July 2, 2013  
DATE RESPONDED: July 22, 2013**

2. Distribution recovery through demand differentiated BSF

I. With commodity flat rate

The non-CARE customers in this sample seeing above 200% change from current as compared to step 5 would see an average monthly impact of \$16, which would be about \$3.20 per transitional step in the 5-step progression. The CARE customers in this sample seeing above 150% change from current as compared to step 5 would see an average monthly impact of \$22, which would be about \$4.40 per transitional step in the 5-step progression.



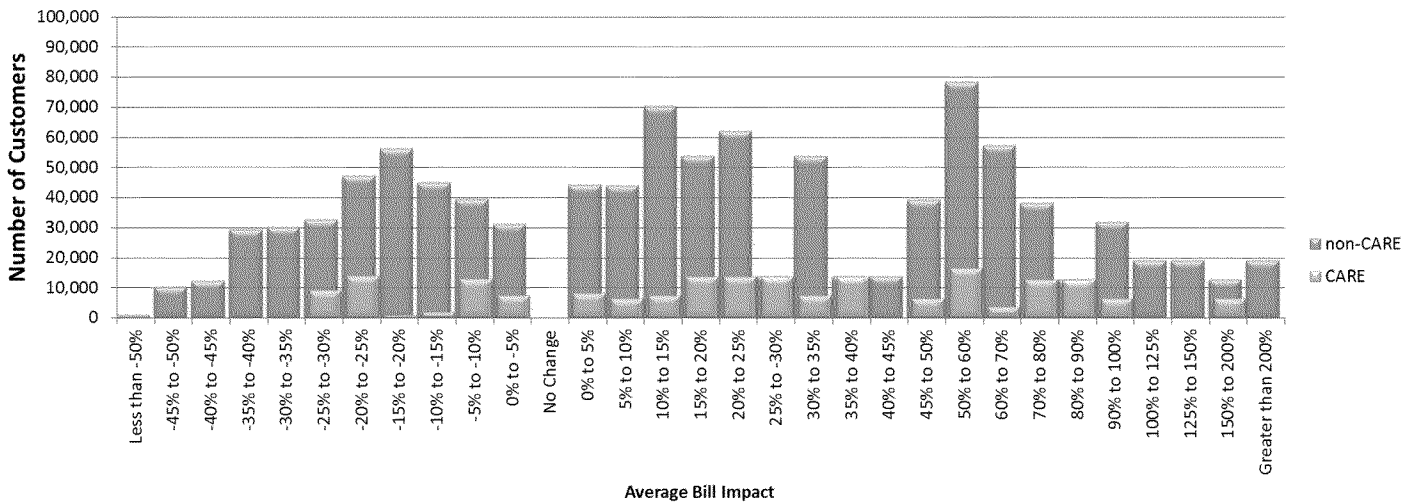
**TURN DATA REQUEST  
TURN-SDG&E-DR-03  
RATE REFORM OIR – R.12-06-013  
SDG&E RESPONSE  
DATE RECEIVED: July 2, 2013  
DATE RESPONDED: July 22, 2013**

2. Distribution recovery through demand differentiated BSF

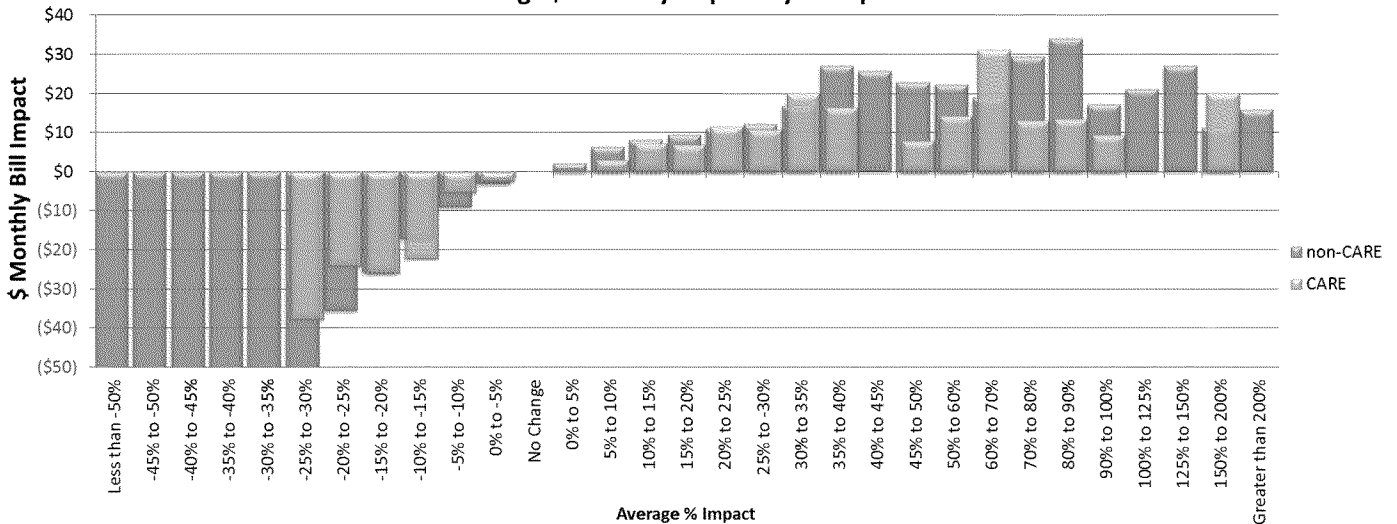
II. With commodity TOU rate

The non-CARE customers in this sample seeing above 200% change from current as compared to step 5 would see an average monthly impact of \$16, which would be about \$3.20 per transitional step in the 5-step progression. The CARE customers in this sample seeing above 150% change from current as compared to step 5 would see an average monthly impact of \$20, which would be about \$4.00 per transitional step in the 5-step progression.

**Number of Customers by % Impact**



**Average \$ Monthly Impact by % Impact**



**TURN DATA REQUEST  
TURN-SDG&E-DR-03  
RATE REFORM OIR – R.12-06-013  
SDG&E RESPONSE  
DATE RECEIVED: July 2, 2013  
DATE RESPONDED: July 22, 2013**

**STEP 5 VERSUS CURRENT ILLUSTRATIVE DATA TABLES**

1. Distribution recovery through a basic service fee (BSF)

I. With commodity flat rate

The non-CARE customers in this sample seeing above 200% change from current as compared to step 5 would see an average monthly impact of \$36, which would be about \$7.20 per transitional step in the 5-step progression. The CARE customers in this sample seeing above 200% change from current as compared to step 5 would see an average monthly impact of \$28, which would be about \$5.60 per transitional step in the 5-step progression.

% Impact Range	<i>Non-CARE</i>			<i>CARE</i>			<i>Combined</i>		
	Number of Customers	Avg. Monthly \$ Impact	Avg. Monthly kWh	Number of Customers	Avg. Monthly \$ Impact	Avg. Monthly kWh	Number of Customers	Avg. Monthly \$ Impact	Avg. Monthly kWh
Less than -50%	2,847	(\$594)	4,033	0	\$0	0	2,847	(\$594)	4,033
-45% to -50%	7,591	(\$267)	2,141	0	\$0	0	7,591	(\$267)	2,141
-40% to -45%	22,774	(\$169)	1,588	0	\$0	0	22,774	(\$169)	1,588
-35% to -40%	25,621	(\$120)	1,337	0	\$0	0	25,621	(\$120)	1,337
-30% to -35%	14,234	(\$83)	1,106	2,847	(\$69)	1,441	17,081	(\$81)	1,162
-25% to -30%	26,299	(\$60)	970	2,847	(\$46)	1,188	29,146	(\$59)	992
-20% to -25%	57,887	(\$40)	834	8,270	(\$32)	1,060	66,157	(\$39)	862
-15% to -20%	33,079	(\$27)	825	4,609	(\$20)	934	37,688	(\$27)	839
-10% to -15%	42,297	(\$17)	717	11,930	(\$14)	791	54,227	(\$16)	733
-5% to -10%	28,469	(\$11)	748	5,558	(\$6)	746	34,027	(\$10)	748
0% to -5%	38,501	(\$3)	624	0	\$0	0	38,501	(\$3)	624
No Change	0	\$0	0	0	\$0	0	0	\$0	0
0% to 5%	29,283	\$2	616	10,981	\$1	637	40,264	\$2	621
5% to 10%	24,668	\$8	509	3,660	\$6	559	28,329	\$7	515
10% to 15%	18,302	\$11	559	7,321	\$8	540	25,622	\$10	554
15% to 20%	32,943	\$14	499	0	\$0	0	32,943	\$14	499
20% to 25%	29,283	\$19	523	7,321	\$13	491	36,603	\$18	517
25% to 30%	46,630	\$20	449	7,321	\$15	494	53,951	\$19	455
30% to 35%	44,722	\$22	448	7,321	\$17	456	52,043	\$21	450
35% to 40%	17,348	\$24	415	7,321	\$18	438	24,668	\$22	422
40% to 45%	24,668	\$25	386	7,321	\$19	424	31,989	\$24	395
45% to 50%	13,687	\$27	376	3,660	\$20	392	17,348	\$25	379
50% to 60%	35,494	\$27	330	20,054	\$21	379	55,548	\$25	348
60% to 70%	31,833	\$29	312	12,733	\$23	337	44,567	\$27	319
70% to 80%	57,300	\$30	278	0	\$0	0	57,300	\$30	278
80% to 90%	82,767	\$32	257	6,367	\$22	234	89,133	\$31	256
90% to 100%	31,833	\$32	234	0	\$0	0	31,833	\$32	234
100% to 125%	70,033	\$32	200	12,733	\$26	215	82,767	\$31	202
125% to 150%	38,200	\$34	164	6,367	\$26	198	44,567	\$33	169
150% to 200%	25,467	\$35	139	19,100	\$27	161	44,567	\$31	148
Greater than 200%	76,400	\$36	67	19,100	\$28	108	95,500	\$34	75
<b>Total</b>	<b>1,030,462</b>	<b>\$1</b>	<b>506</b>	<b>194,741</b>	<b>\$12</b>	<b>452</b>	<b>1,225,203</b>	<b>\$3</b>	<b>497</b>



**TURN DATA REQUEST  
TURN-SDG&E-DR-03  
RATE REFORM OIR – R.12-06-013  
SDG&E RESPONSE  
DATE RECEIVED: July 2, 2013  
DATE RESPONDED: July 22, 2013**

I. Distribution recovery through a basic service fee (BSF)

II. With commodity TOU rate

The non-CARE customers in this sample seeing above 200% change from current as compared to step 5 would see an average monthly impact of \$35, which would be about \$7.00 per transitional step in the 5-step progression. The CARE customers in this sample seeing above 200% change from current as compared to step 5 would see an average monthly impact of \$28, which would be about \$5.60 per transitional step in the 5-step progression.

% Impact Range	<i>Non-CARE</i>			<i>CARE</i>			<i>Combined</i>		
	Number of Customers	Avg. Monthly \$ Impact	Avg. Monthly kWh	Number of Customers	Avg. Monthly \$ Impact	Avg. Monthly kWh	Number of Customers	Avg. Monthly \$ Impact	Avg. Monthly kWh
Less than -50%	4,745	(\$484)	3,325	0	\$0	0	4,745	(\$484)	3,325
-45% to -50%	5,694	(\$240)	1,937	0	\$0	0	5,694	(\$240)	1,937
-40% to -45%	19,928	(\$173)	1,645	0	\$0	0	19,928	(\$173)	1,645
-35% to -40%	24,672	(\$119)	1,313	0	\$0	0	24,672	(\$119)	1,313
-30% to -35%	31,722	(\$75)	1,028	949	(\$77)	1,640	32,671	(\$75)	1,046
-25% to -30%	30,773	(\$55)	936	6,507	(\$44)	1,169	37,280	(\$53)	977
-20% to -25%	40,535	(\$41)	846	1,898	(\$35)	1,084	42,432	(\$41)	856
-15% to -20%	34,027	(\$25)	745	11,930	(\$22)	951	45,957	(\$24)	798
-10% to -15%	43,246	(\$19)	763	8,270	(\$14)	787	51,516	(\$18)	767
-5% to -10%	43,111	(\$10)	711	5,558	(\$7)	746	48,669	(\$10)	715
0% to -5%	32,130	(\$3)	666	4,609	(\$2)	772	36,739	(\$2)	680
No Change	0	\$0	0	0	\$0	0	0	\$0	0
0% to 5%	18,302	\$2	540	7,321	\$1	535	25,622	\$2	538
5% to 10%	28,329	\$7	539	3,660	\$6	676	31,989	\$7	555
10% to 15%	25,622	\$11	531	7,321	\$8	540	32,943	\$11	533
15% to 20%	40,264	\$15	518	0	\$0	0	40,264	\$15	518
20% to 25%	21,962	\$17	471	7,321	\$13	491	29,283	\$16	476
25% to 30%	35,649	\$19	437	7,321	\$15	494	42,970	\$18	447
30% to 35%	44,722	\$23	460	10,981	\$16	436	55,703	\$21	456
35% to 40%	34,695	\$23	399	3,660	\$20	481	38,356	\$23	407
40% to 45%	17,348	\$24	384	0	\$0	0	17,348	\$24	384
45% to 50%	7,321	\$27	369	3,660	\$19	392	10,981	\$24	377
50% to 60%	44,567	\$26	325	27,375	\$22	391	71,941	\$25	350
60% to 70%	31,833	\$28	299	6,367	\$22	329	38,200	\$27	304
70% to 80%	44,567	\$30	274	6,367	\$25	345	50,933	\$29	283
80% to 90%	89,133	\$31	255	6,367	\$23	234	95,500	\$30	254
90% to 100%	31,833	\$31	233	0	\$0	0	31,833	\$31	233
100% to 125%	63,667	\$31	197	6,367	\$26	218	70,033	\$31	199
125% to 150%	38,200	\$33	164	12,733	\$27	205	50,933	\$31	174
150% to 200%	25,467	\$34	139	19,100	\$27	161	44,567	\$31	148
Greater than 200%	76,400	\$35	67	19,100	\$28	108	95,500	\$34	75
<b>Total</b>	<b>1,030,462</b>	<b>\$1</b>	<b>506</b>	<b>194,741</b>	<b>\$12</b>	<b>452</b>	<b>1,225,203</b>	<b>\$2</b>	<b>497</b>

**TURN DATA REQUEST  
TURN-SDG&E-DR-03  
RATE REFORM OIR – R.12-06-013  
SDG&E RESPONSE  
DATE RECEIVED: July 2, 2013  
DATE RESPONDED: July 22, 2013**

2. Distribution recovery through demand differentiated BSF

I. With commodity flat rate

The non-CARE customers in this sample seeing above 200% change from current as compared to step 5 would see an average monthly impact of \$16, which would be about \$3.20 per transitional step in the 5-step progression. The CARE customers in this sample seeing above 150% change from current as compared to step 5 would see an average monthly impact of \$22, which would be about \$4.40 per transitional step in the 5-step progression.

% Impact Range	<i>Non-CARE</i>			<i>CARE</i>			<i>Combined</i>		
	Number of Customers	Avg. Monthly \$ Impact	Avg. Monthly kWh	Number of Customers	Avg. Monthly \$ Impact	Avg. Monthly kWh	Number of Customers	Avg. Monthly \$ Impact	Avg. Monthly kWh
Less than -50%	949	(\$1,003)	6,515	0	\$0	0	949	(\$1,003)	6,515
-45% to -50%	4,745	(\$276)	2,269	0	\$0	0	4,745	(\$276)	2,269
-40% to -45%	15,183	(\$192)	1,788	0	\$0	0	15,183	(\$192)	1,788
-35% to -40%	27,248	(\$114)	1,269	0	\$0	0	27,248	(\$114)	1,269
-30% to -35%	29,281	(\$92)	1,213	949	(\$78)	1,640	30,230	(\$91)	1,226
-25% to -30%	37,010	(\$52)	862	6,507	(\$34)	946	43,517	(\$49)	875
-20% to -25%	36,061	(\$38)	812	12,879	(\$26)	857	48,940	(\$35)	824
-15% to -20%	55,176	(\$26)	725	5,558	(\$21)	833	60,734	(\$26)	735
-10% to -15%	46,766	(\$17)	680	0	\$0	0	46,766	(\$17)	680
-5% to -10%	52,329	(\$10)	663	10,167	(\$7)	803	62,497	(\$9)	686
0% to -5%	23,860	(\$2)	673	10,981	(\$2)	751	34,841	(\$2)	698
No Change	0	\$0	0	0	\$0	0	0	\$0	0
0% to 5%	43,106	\$2	578	7,321	\$2	473	50,426	\$2	562
5% to 10%	32,933	\$5	456	10,027	\$4	429	42,960	\$5	450
10% to 15%	51,245	\$11	522	3,660	\$7	469	54,905	\$10	518
15% to 20%	64,771	\$10	376	10,027	\$7	425	74,798	\$10	383
20% to 25%	69,235	\$11	331	13,687	\$8	353	82,922	\$11	335
25% to 30%	25,467	\$12	259	14,641	\$18	548	40,108	\$14	365
30% to 35%	31,035	\$18	382	16,394	\$12	352	47,429	\$16	372
35% to 40%	36,448	\$19	348	7,321	\$17	430	43,768	\$19	362
40% to 45%	16,394	\$22	336	0	\$0	0	16,394	\$22	336
45% to 50%	16,394	\$18	266	10,027	\$17	320	26,421	\$18	287
50% to 60%	101,068	\$24	306	12,733	\$8	162	113,802	\$23	290
60% to 70%	67,327	\$24	252	10,027	\$19	290	77,354	\$23	257
70% to 80%	19,100	\$20	187	6,367	\$11	159	25,467	\$18	180
80% to 90%	19,100	\$27	227	12,733	\$14	163	31,833	\$22	202
90% to 100%	19,100	\$29	211	6,367	\$10	103	25,467	\$24	184
100% to 125%	31,833	\$20	131	0	\$0	0	31,833	\$20	131
125% to 150%	25,467	\$25	131	0	\$0	0	25,467	\$25	131
150% to 200%	12,733	\$11	24	6,367	\$22	114	19,100	\$15	54
Greater than 200%	19,100	\$16	32	0	\$0	0	19,100	\$16	32
<b>Total</b>	<b>1,030,462</b>	<b>(\$5)</b>	<b>506</b>	<b>194,741</b>	<b>\$5</b>	<b>452</b>	<b>1,225,203</b>	<b>(\$4)</b>	<b>497</b>

**TURN DATA REQUEST  
TURN-SDG&E-DR-03  
RATE REFORM OIR – R.12-06-013  
SDG&E RESPONSE  
DATE RECEIVED: July 2, 2013  
DATE RESPONDED: July 22, 2013**

2. Distribution recovery through demand differentiated BSF

II. With commodity TOU rate

The non-CARE customers in this sample seeing above 200% change from current as compared to step 5 would see an average monthly impact of \$16, which would be about \$3.20 per transitional step in the 5-step progression. The CARE customers in this sample seeing above 150% change from current as compared to step 5 would see an average monthly impact of \$20, which would be about \$4.00 per transitional step in the 5-step progression.

% Impact Range	<i>Non-CARE</i>			<i>CARE</i>			<i>Combined</i>		
	Number of Customers	Avg. Monthly \$ Impact	Avg. Monthly kWh	Number of Customers	Avg. Monthly \$ Impact	Avg. Monthly kWh	Number of Customers	Avg. Monthly \$ Impact	Avg. Monthly kWh
Less than -50%	949	(\$1,022)	6,515	0	\$0	0	949	(\$1,022)	6,515
-45% to -50%	10,303	(\$192)	1,624	0	\$0	0	10,303	(\$192)	1,624
-40% to -45%	12,201	(\$155)	1,446	0	\$0	0	12,201	(\$155)	1,446
-35% to -40%	29,281	(\$129)	1,431	0	\$0	0	29,281	(\$129)	1,431
-30% to -35%	29,960	(\$80)	1,097	0	\$0	0	29,960	(\$80)	1,097
-25% to -30%	32,536	(\$58)	933	9,219	(\$38)	993	41,754	(\$54)	946
-20% to -25%	47,042	(\$36)	772	13,828	(\$24)	800	60,870	(\$33)	778
-15% to -20%	56,125	(\$26)	727	949	(\$26)	1,158	57,074	(\$26)	734
-10% to -15%	45,003	(\$17)	682	1,898	(\$22)	1,089	46,901	(\$17)	698
-5% to -10%	39,450	(\$9)	620	12,879	(\$5)	636	52,329	(\$8)	624
0% to -5%	31,181	(\$3)	685	7,321	(\$3)	998	38,501	(\$3)	744
No Change	0	\$0	0	0	\$0	0	0	\$0	0
0% to 5%	44,049	\$2	527	8,270	\$1	529	52,319	\$2	528
5% to 10%	43,919	\$6	567	6,367	\$3	373	50,286	\$6	542
10% to 15%	70,340	\$8	411	7,321	\$7	497	77,660	\$8	419
15% to 20%	53,790	\$10	351	13,687	\$7	425	67,478	\$9	366
20% to 25%	61,914	\$11	326	13,687	\$12	432	75,602	\$11	345
25% to 30%	13,687	\$12	276	13,687	\$11	367	27,375	\$12	322
30% to 35%	53,795	\$17	352	7,321	\$20	527	61,116	\$17	373
35% to 40%	13,687	\$27	486	13,687	\$16	395	27,375	\$22	441
40% to 45%	13,687	\$26	394	0	\$0	0	13,687	\$26	394
45% to 50%	39,154	\$23	332	6,367	\$8	165	45,521	\$21	308
50% to 60%	78,308	\$22	284	16,394	\$14	257	94,702	\$21	279
60% to 70%	57,300	\$19	206	3,660	\$31	450	60,960	\$20	221
70% to 80%	38,200	\$30	274	12,733	\$13	179	50,933	\$26	250
80% to 90%	12,733	\$34	279	12,733	\$14	163	25,467	\$24	221
90% to 100%	31,833	\$17	123	6,367	\$10	103	38,200	\$16	120
100% to 125%	19,100	\$21	139	0	\$0	0	19,100	\$21	139
125% to 150%	19,100	\$27	141	0	\$0	0	19,100	\$27	141
150% to 200%	12,733	\$11	24	6,367	\$20	114	19,100	\$14	54
Greater than 200%	19,100	\$16	32	0	\$0	0	19,100	\$16	32
<b>Total</b>	<b>1,030,462</b>	<b>(\$6)</b>	<b>506</b>	<b>194,741</b>	<b>\$5</b>	<b>452</b>	<b>1,225,203</b>	<b>(\$4)</b>	<b>497</b>

**TURN DATA REQUEST  
TURN-SDG&E-DR-03  
RATE REFORM OIR – R.12-06-013  
SDG&E RESPONSE  
DATE RECEIVED: July 2, 2013  
DATE RESPONDED: July 22, 2013**

2. Please show the full retail rates that would result at each Step (1, 2, 3, 4, 5) from the following:
- a. Demand-differentiated basic service fee + commodity cost recovery through TOU rate
  - b. Basic service fee + commodity cost recovery through TOU rate

**SDG&E Response 02:**

The supplemental filing SDG&E submitted, per the request of Energy Division, on July 15, 2013 contains total retail rates for each Step of the scenarios noted in the response to Question 1.

**TURN DATA REQUEST  
TURN-SDG&E-DR-03  
RATE REFORM OIR – R.12-06-013  
SDG&E RESPONSE  
DATE RECEIVED: July 2, 2013  
DATE RESPONDED: July 22, 2013**

3. Did SDG&E model the impact of any of the proposed changes by baseline zone? If so, please provide the results of any such analysis.

**SDG&E Response 03:**

No.

**TURN DATA REQUEST  
TURN-SDG&E-DR-03  
RATE REFORM OIR – R.12-06-013  
SDG&E RESPONSE  
DATE RECEIVED: July 2, 2013  
DATE RESPONDED: July 22, 2013**

4. Please provide all bill impacts requested in questions (1) and (2) by month or season (summer/winter). If SDG&E cannot provide this information, explain why seasonal (or monthly) bill impacts cannot be estimated.

**SDG&E Response 04:**

The following pages contain the illustrative bill impact graphs and data tables for Step 5 of each of the four scenarios as compared to current, shown separately by summer and winter.

**TURN DATA REQUEST  
TURN-SDG&E-DR-03  
RATE REFORM OIR – R.12-06-013  
SDG&E RESPONSE  
DATE RECEIVED: July 2, 2013  
DATE RESPONDED: July 22, 2013**

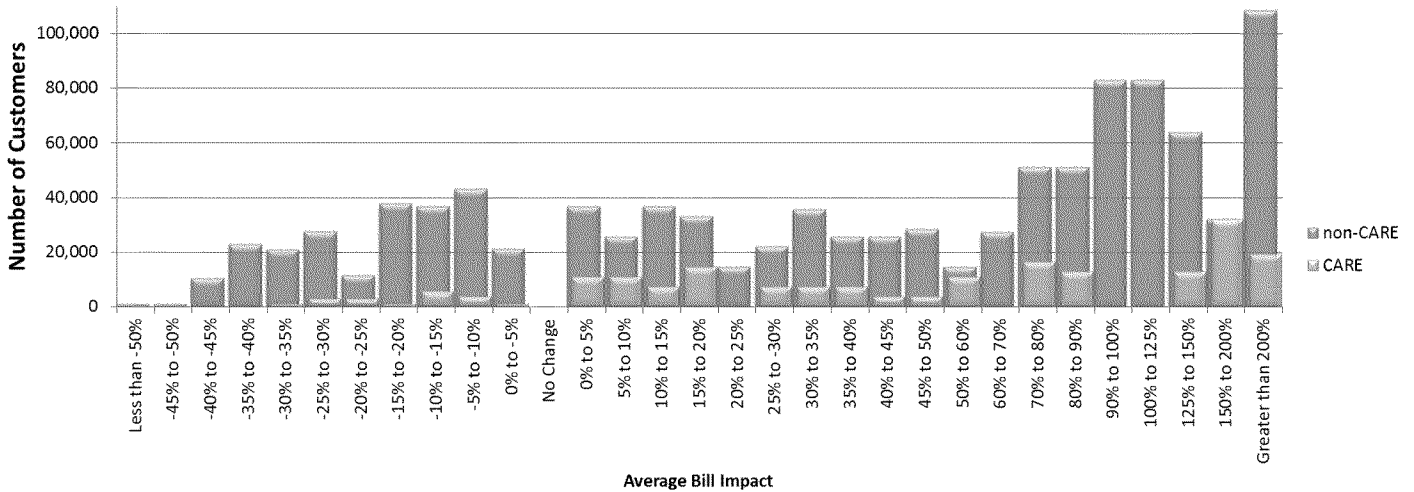
**SUMMER: STEP 5 VERSUS CURRENT ILLUSTRATIVE BILL IMPACT GRAPHS**

1. Distribution recovery through a basic service fee (BSF)

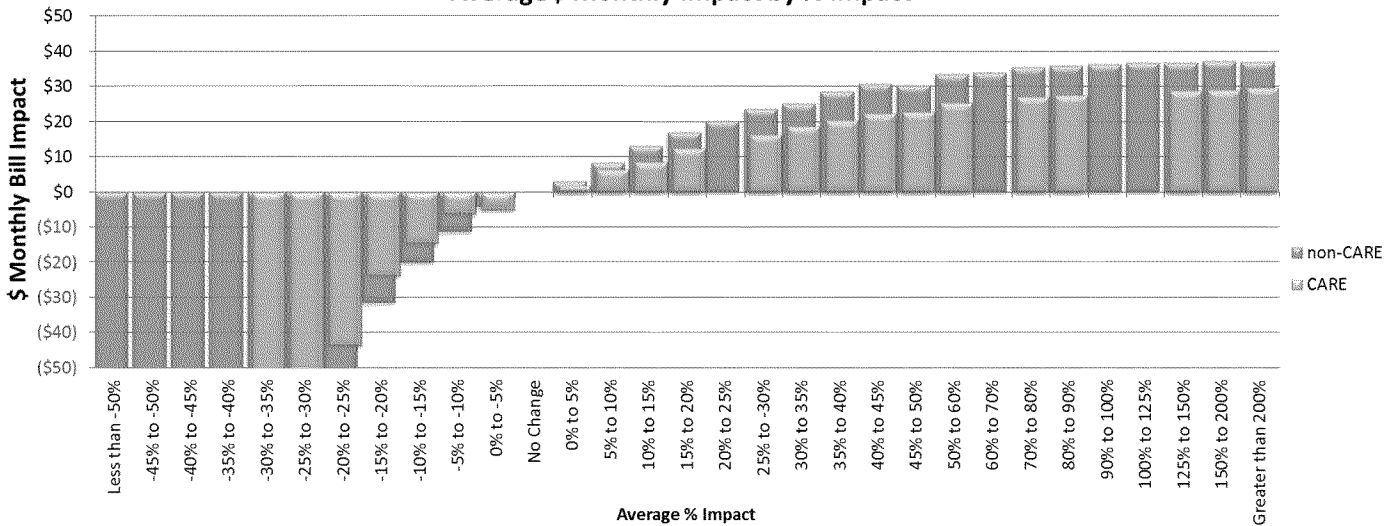
I. With commodity flat rate (Summer)

The non-CARE customers in this sample seeing above 200% change from current as compared to step 5 would see an average monthly impact of \$37, which would be about \$7.40 per transitional step in the 5-step progression. The CARE customers in this sample seeing above 200% change from current as compared to step 5 would see an average monthly impact of \$30, which would be about \$6.00 per transitional step in the 5-step progression.

**Number of Customers by % Impact**



**Average \$ Monthly Impact by % Impact**



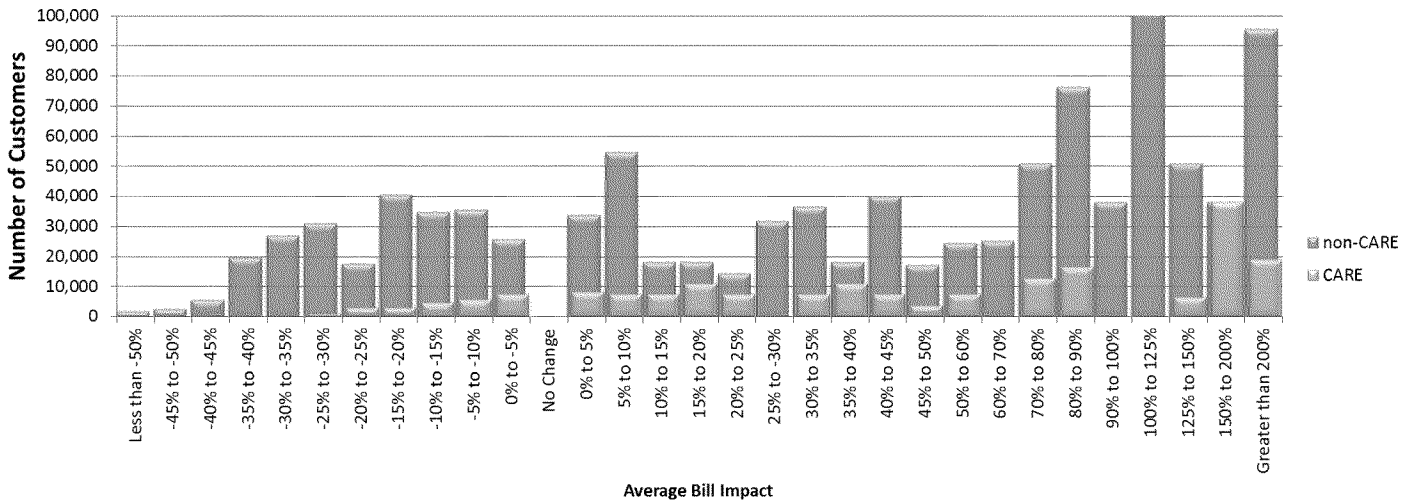
**TURN DATA REQUEST  
TURN-SDG&E-DR-03  
RATE REFORM OIR – R.12-06-013  
SDG&E RESPONSE  
DATE RECEIVED: July 2, 2013  
DATE RESPONDED: July 22, 2013**

1. Distribution recovery through a basic service fee (BSF)

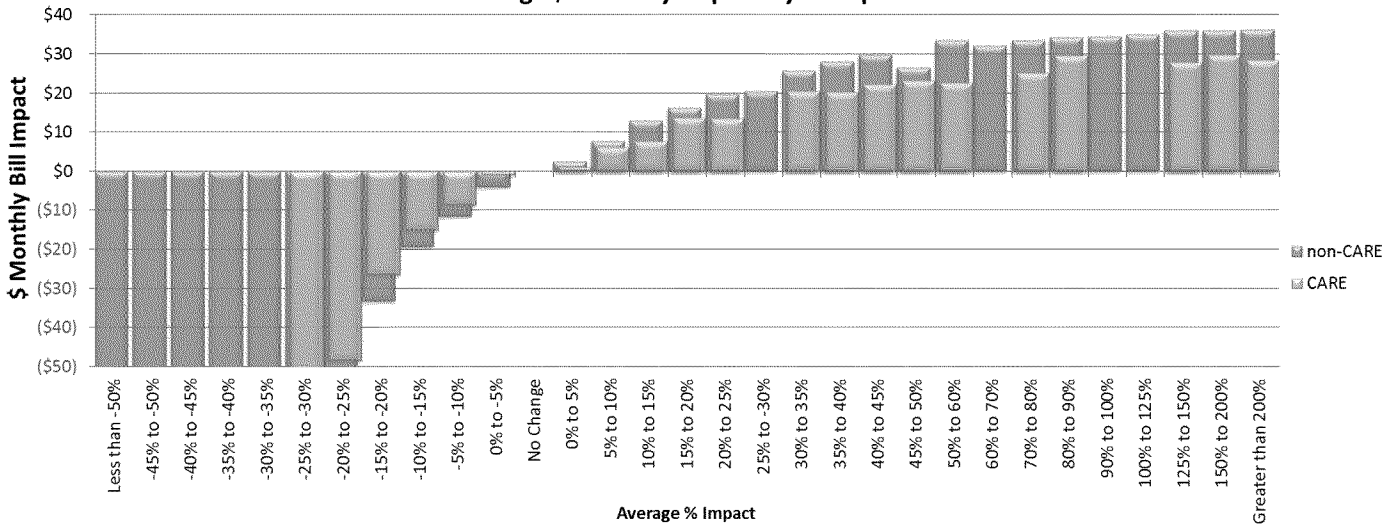
II. With commodity TOU rate (Summer)

The non-CARE customers in this sample seeing above 200% change from current as compared to step 5 would see an average monthly impact of \$36, which would be about \$7.20 per transitional step in the 5-step progression. The CARE customers in this sample seeing above 200% change from current as compared to step 5 would see an average monthly impact of \$29, which would be about \$5.80 per transitional step in the 5-step progression.

**Number of Customers by % Impact**



**Average \$ Monthly Impact by % Impact**





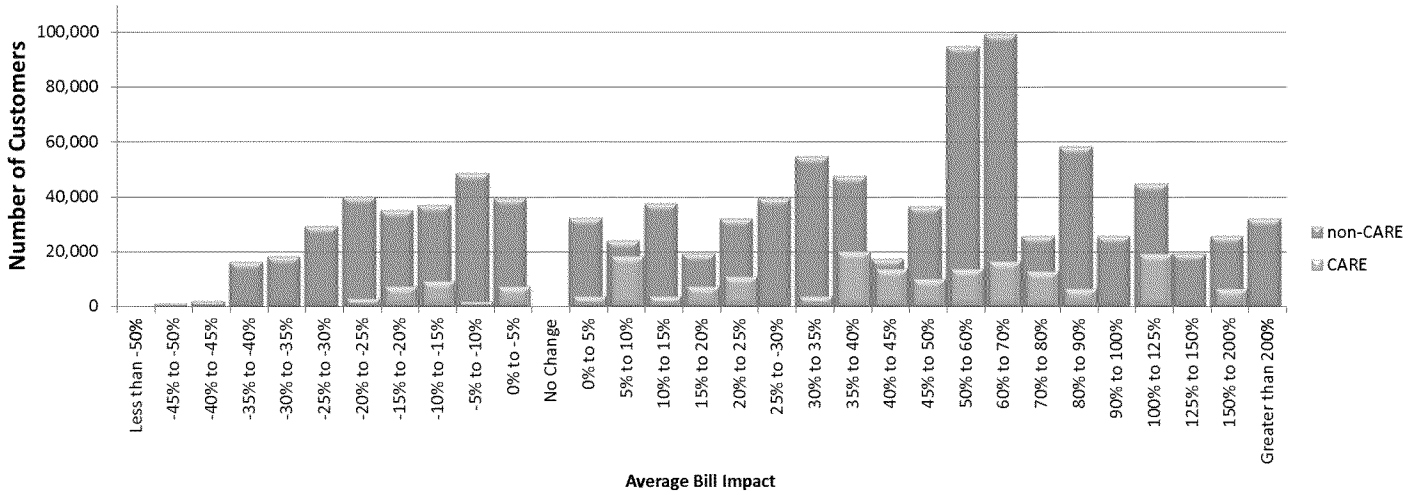
**TURN DATA REQUEST  
TURN-SDG&E-DR-03  
RATE REFORM OIR – R.12-06-013  
SDG&E RESPONSE  
DATE RECEIVED: July 2, 2013  
DATE RESPONDED: July 22, 2013**

2. Distribution recovery through demand differentiated BSF

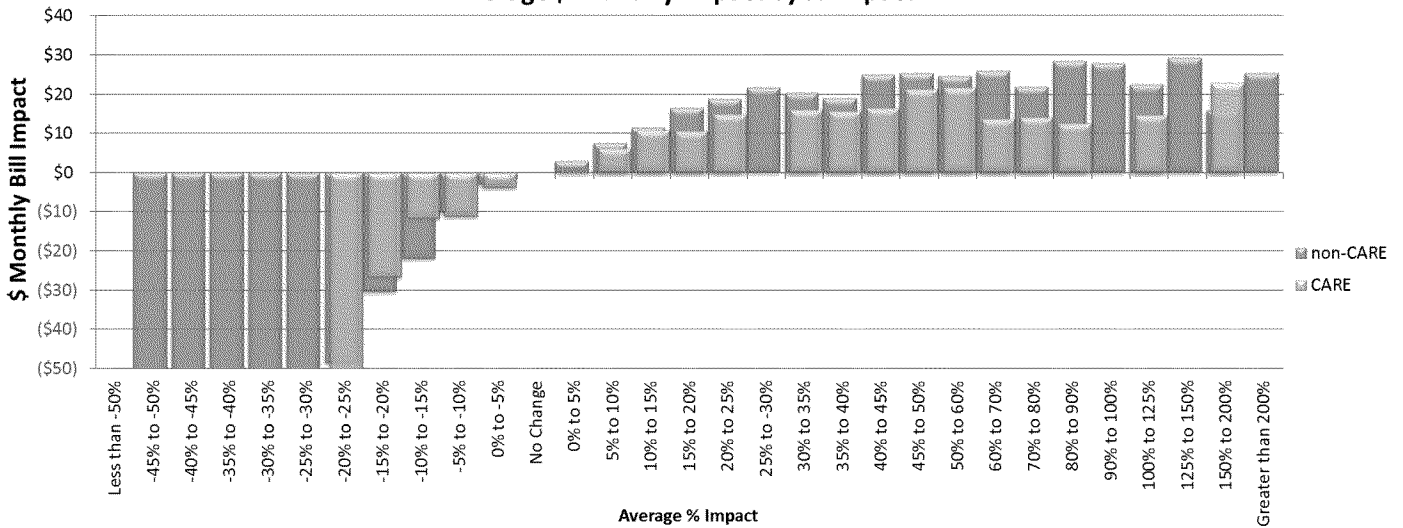
I. With commodity flat rate (Summer)

The non-CARE customers in this sample seeing above 200% change from current as compared to step 5 would see an average monthly impact of \$26, which would be about \$5.20 per transitional step in the 5-step progression. The CARE customers in this sample seeing above 150% change from current as compared to step 5 would see an average monthly impact of \$23, which would be about \$4.60 per transitional step in the 5-step progression.

**Number of Customers by % Impact**



**Average \$ Monthly Impact by % Impact**



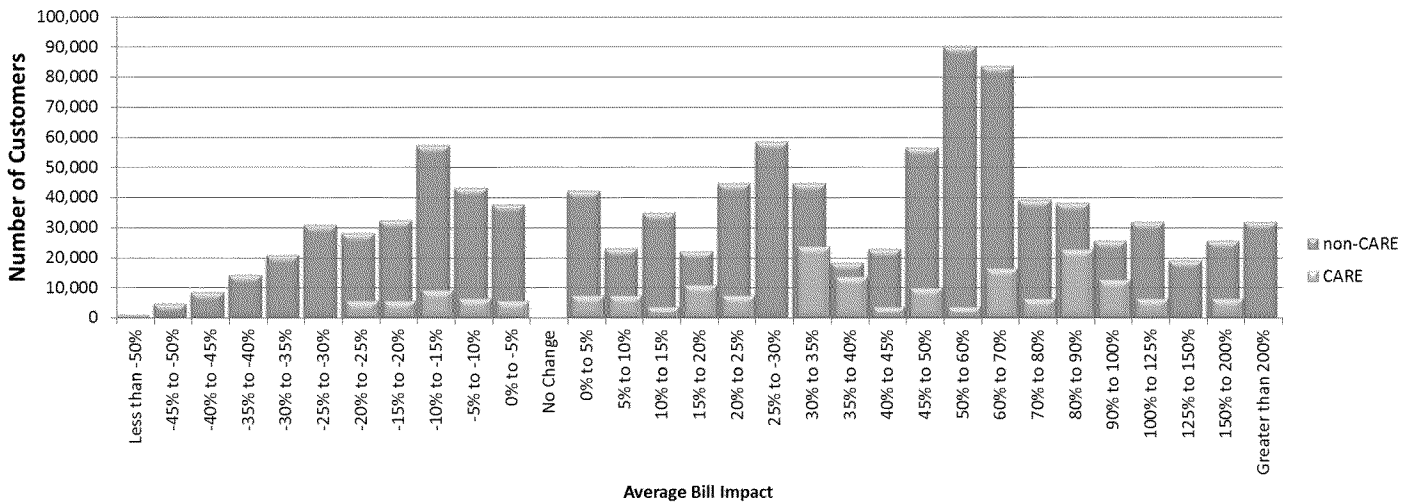
**TURN DATA REQUEST  
TURN-SDG&E-DR-03  
RATE REFORM OIR – R.12-06-013  
SDG&E RESPONSE  
DATE RECEIVED: July 2, 2013  
DATE RESPONDED: July 22, 2013**

2. Distribution recovery through demand differentiated BSF

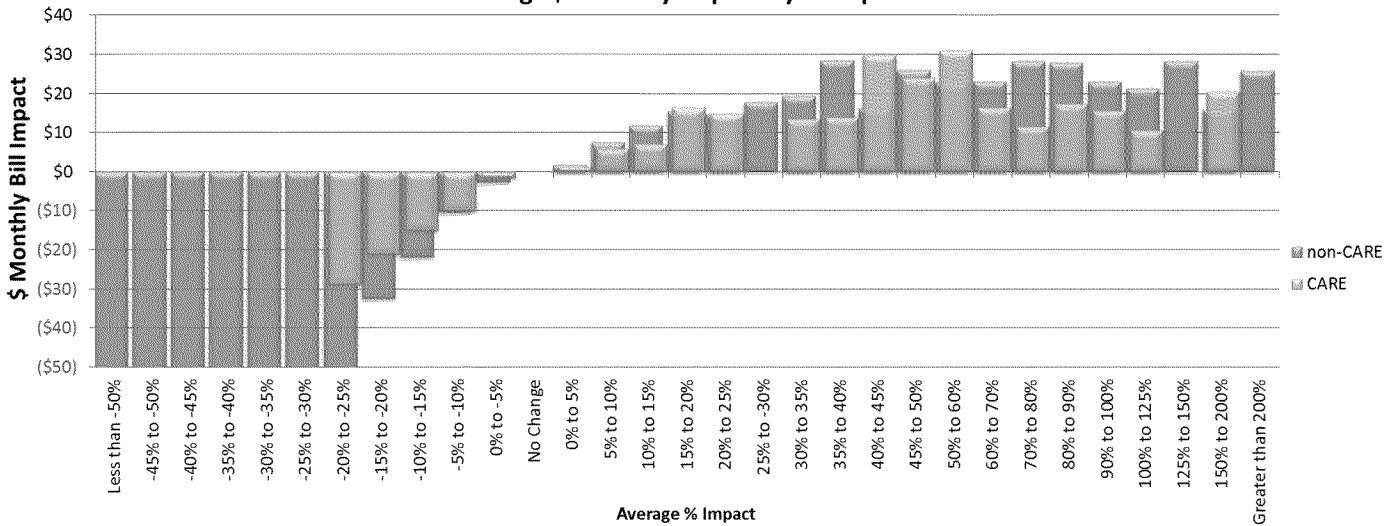
II. With commodity TOU rate (Summer)

The non-CARE customers in this sample seeing above 200% change from current as compared to step 5 would see an average monthly impact of \$26, which would be about \$5.20 per transitional step in the 5-step progression. The CARE customers in this sample seeing above 150% change from current as compared to step 5 would see an average monthly impact of \$21, which would be about \$4.20 per transitional step in the 5-step progression.

**Number of Customers by % Impact**



**Average \$ Monthly Impact by % Impact**



**TURN DATA REQUEST  
TURN-SDG&E-DR-03  
RATE REFORM OIR – R.12-06-013  
SDG&E RESPONSE  
DATE RECEIVED: July 2, 2013  
DATE RESPONDED: July 22, 2013**

**SUMMER: STEP 5 VERSUS CURRENT ILLUSTRATIVE DATA TABLES**

1. Distribution recovery through a basic service fee (BSF)
  - I. With commodity flat rate (Summer)

The non-CARE customers in this sample seeing above 200% change from current as compared to step 5 would see an average monthly impact of \$37, which would be about \$7.40 per transitional step in the 5-step progression. The CARE customers in this sample seeing above 200% change from current as compared to step 5 would see an average monthly impact of \$30, which would be about \$6.00 per transitional step in the 5-step progression.

% Impact Range	<i><b>Non-CARE</b></i>			<i><b>CARE</b></i>			<i><b>Combined</b></i>		
	Number of Customers	Avg. Monthly \$ Impact	Avg. Monthly kWh	Number of Customers	Avg. Monthly \$ Impact	Avg. Monthly kWh	Number of Customers	Avg. Monthly \$ Impact	Avg. Monthly kWh
Less than -50%	949	(\$993)	6,708	0	\$0	0	949	(\$993)	6,708
-45% to -50%	949	(\$357)	2,800	0	\$0	0	949	(\$357)	2,800
-40% to -45%	10,438	(\$229)	2,051	0	\$0	0	10,438	(\$229)	2,051
-35% to -40%	22,774	(\$154)	1,613	0	\$0	0	22,774	(\$154)	1,613
-30% to -35%	20,876	(\$107)	1,328	949	(\$81)	1,697	21,825	(\$106)	1,344
-25% to -30%	27,519	(\$77)	1,161	2,847	(\$57)	1,458	30,366	(\$75)	1,189
-20% to -25%	11,387	(\$54)	1,090	2,847	(\$44)	1,314	14,234	(\$52)	1,134
-15% to -20%	37,823	(\$31)	845	949	(\$24)	963	38,772	(\$31)	848
-10% to -15%	36,739	(\$20)	776	5,558	(\$15)	938	42,297	(\$19)	797
-5% to -10%	43,111	(\$11)	726	3,660	(\$6)	759	46,771	(\$11)	728
0% to -5%	21,149	(\$4)	699	949	(\$5)	921	22,097	(\$4)	708
No Change	0	\$0	0	0	\$0	0	0	\$0	0
0% to 5%	36,603	\$3	636	10,981	\$2	683	47,585	\$3	647
5% to 10%	25,622	\$8	613	10,981	\$7	648	36,603	\$8	623
10% to 15%	36,603	\$13	581	7,321	\$9	541	43,924	\$12	575
15% to 20%	32,943	\$17	552	14,641	\$13	613	47,585	\$16	571
20% to 25%	14,641	\$20	538	0	\$0	0	14,641	\$20	538
25% to 30%	21,962	\$24	509	7,321	\$16	519	29,283	\$22	511
30% to 35%	35,649	\$25	467	7,321	\$19	499	42,970	\$24	473
35% to 40%	25,622	\$29	489	7,321	\$20	497	32,943	\$27	491
40% to 45%	25,622	\$31	481	3,660	\$22	476	29,283	\$30	481
45% to 50%	28,329	\$30	406	3,660	\$23	428	31,989	\$30	408
50% to 60%	14,641	\$34	414	10,981	\$25	443	25,622	\$30	426
60% to 70%	27,375	\$34	366	0	\$0	0	27,375	\$34	366
70% to 80%	50,933	\$36	324	16,394	\$27	353	67,327	\$34	331
80% to 90%	50,933	\$36	294	12,733	\$28	317	63,667	\$34	299
90% to 100%	82,767	\$36	263	0	\$0	0	82,767	\$36	263
100% to 125%	82,767	\$37	224	0	\$0	0	82,767	\$37	224
125% to 150%	63,667	\$37	184	12,733	\$29	205	76,400	\$36	188
150% to 200%	31,833	\$37	160	31,833	\$29	166	63,667	\$33	163
Greater than 200%	108,233	\$37	75	19,100	\$30	110	127,333	\$36	80
<b>Total</b>	<b>1,030,462</b>	<b>\$9</b>	<b>494</b>	<b>194,741</b>	<b>\$17</b>	<b>441</b>	<b>1,225,203</b>	<b>\$11</b>	<b>486</b>

**TURN DATA REQUEST  
TURN-SDG&E-DR-03  
RATE REFORM OIR – R.12-06-013  
SDG&E RESPONSE  
DATE RECEIVED: July 2, 2013  
DATE RESPONDED: July 22, 2013**

1. Distribution recovery through a basic service fee (BSF)

II. With commodity TOU rate (Summer)

The non-CARE customers in this sample seeing above 200% change from current as compared to step 5 would see an average monthly impact of \$36, which would be about \$7.20 per transitional step in the 5-step progression. The CARE customers in this sample seeing above 200% change from current as compared to step 5 would see an average monthly impact of \$29, which would be about \$5.80 per transitional step in the 5-step progression.

% Impact Range	<i>Non-CARE</i>			<i>CARE</i>			<i>Combined</i>		
	Number of Customers	Avg. Monthly \$ Impact	Avg. Monthly kWh	Number of Customers	Avg. Monthly \$ Impact	Avg. Monthly kWh	Number of Customers	Avg. Monthly \$ Impact	Avg. Monthly kWh
Less than -50%	1,898	(\$654)	4,369	0	\$0	0	1,898	(\$654)	4,369
-45% to -50%	2,847	(\$281)	2,213	0	\$0	0	2,847	(\$281)	2,213
-40% to -45%	5,694	(\$203)	1,807	0	\$0	0	5,694	(\$203)	1,807
-35% to -40%	19,928	(\$155)	1,621	0	\$0	0	19,928	(\$155)	1,621
-30% to -35%	27,248	(\$98)	1,218	0	\$0	0	27,248	(\$98)	1,218
-25% to -30%	31,044	(\$74)	1,141	949	(\$70)	1,697	31,993	(\$74)	1,158
-20% to -25%	17,894	(\$56)	1,106	2,847	(\$48)	1,437	20,741	(\$55)	1,152
-15% to -20%	40,670	(\$33)	854	2,847	(\$26)	1,110	43,517	(\$33)	871
-10% to -15%	34,976	(\$19)	778	4,609	(\$15)	890	39,586	(\$19)	791
-5% to -10%	35,790	(\$12)	710	5,558	(\$9)	822	41,348	(\$11)	725
0% to -5%	25,758	(\$4)	700	7,321	(\$1)	805	33,079	(\$3)	723
No Change	0	\$0	0	0	\$0	0	0	\$0	0
0% to 5%	33,892	\$3	626	8,270	\$1	711	42,162	\$2	642
5% to 10%	54,905	\$8	601	7,321	\$6	680	62,226	\$8	611
10% to 15%	18,302	\$13	569	7,321	\$8	543	25,622	\$12	562
15% to 20%	18,302	\$16	551	10,981	\$14	580	29,283	\$15	562
20% to 25%	14,641	\$20	503	7,321	\$14	519	21,962	\$18	508
25% to 30%	31,989	\$21	467	0	\$0	0	31,989	\$21	467
30% to 35%	36,603	\$26	508	7,321	\$21	530	43,924	\$25	512
35% to 40%	18,302	\$28	487	10,981	\$21	492	29,283	\$25	489
40% to 45%	40,264	\$30	461	7,321	\$22	482	47,585	\$29	464
45% to 50%	17,348	\$27	354	3,660	\$23	478	21,008	\$26	376
50% to 60%	24,668	\$34	410	7,321	\$23	425	31,989	\$31	414
60% to 70%	25,467	\$32	331	0	\$0	0	25,467	\$32	331
70% to 80%	50,933	\$34	306	12,733	\$25	327	63,667	\$32	310
80% to 90%	76,400	\$34	280	16,394	\$30	346	92,794	\$34	291
90% to 100%	38,200	\$35	256	0	\$0	0	38,200	\$35	256
100% to 125%	101,867	\$35	218	0	\$0	0	101,867	\$35	218
125% to 150%	50,933	\$36	180	6,367	\$28	214	57,300	\$35	184
150% to 200%	38,200	\$36	149	38,200	\$30	171	76,400	\$33	160
Greater than 200%	95,500	\$36	68	19,100	\$29	110	114,600	\$35	75
<b>Total</b>	<b>1,030,462</b>	<b>\$8</b>	<b>494</b>	<b>194,741</b>	<b>\$18</b>	<b>441</b>	<b>1,225,203</b>	<b>\$9</b>	<b>486</b>

**TURN DATA REQUEST  
TURN-SDG&E-DR-03  
RATE REFORM OIR – R.12-06-013  
SDG&E RESPONSE  
DATE RECEIVED: July 2, 2013  
DATE RESPONDED: July 22, 2013**

2. Distribution recovery through demand differentiated BSF

I. With commodity flat rate (Summer)

The non-CARE customers in this sample seeing above 200% change from current as compared to step 5 would see an average monthly impact of \$26, which would be about \$5.20 per transitional step in the 5-step progression. The CARE customers in this sample seeing above 150% change from current as compared to step 5 would see an average monthly impact of \$23, which would be about \$4.60 per transitional step in the 5-step progression.

% Impact Range	<i>Non-CARE</i>			<i>CARE</i>			<i>Combined</i>		
	Number of Customers	Avg. Monthly \$ Impact	Avg. Monthly kWh	Number of Customers	Avg. Monthly \$ Impact	Avg. Monthly kWh	Number of Customers	Avg. Monthly \$ Impact	Avg. Monthly kWh
Less than -50%	0	\$0	0	0	\$0	0	0	\$0	0
-45% to -50%	949	(\$967)	6,708	0	\$0	0	949	(\$967)	6,708
-40% to -45%	1,898	(\$302)	2,626	0	\$0	0	1,898	(\$302)	2,626
-35% to -40%	16,132	(\$178)	1,820	0	\$0	0	16,132	(\$178)	1,820
-30% to -35%	18,030	(\$128)	1,551	0	\$0	0	18,030	(\$128)	1,551
-25% to -30%	29,281	(\$83)	1,216	0	\$0	0	29,281	(\$83)	1,216
-20% to -25%	39,992	(\$49)	958	2,847	(\$51)	1,412	42,839	(\$49)	988
-15% to -20%	35,112	(\$30)	793	7,456	(\$27)	1,052	42,568	(\$30)	839
-10% to -15%	37,010	(\$22)	836	9,219	(\$12)	695	46,228	(\$20)	808
-5% to -10%	48,533	(\$10)	669	1,898	(\$11)	1,042	50,431	(\$10)	683
0% to -5%	39,450	(\$3)	677	7,321	(\$4)	667	46,771	(\$3)	675
No Change	0	\$0	0	0	\$0	0	0	\$0	0
0% to 5%	32,130	\$3	619	3,660	\$0	460	35,790	\$3	602
5% to 10%	23,860	\$8	588	18,302	\$6	669	42,162	\$7	623
10% to 15%	37,547	\$12	517	3,660	\$11	587	41,208	\$11	524
15% to 20%	19,251	\$17	544	7,321	\$11	572	26,571	\$15	552
20% to 25%	31,989	\$19	471	10,981	\$15	557	42,970	\$18	493
25% to 30%	39,310	\$22	493	0	\$0	0	39,310	\$22	493
30% to 35%	54,749	\$20	397	3,660	\$16	428	58,410	\$20	399
35% to 40%	47,429	\$19	338	20,054	\$16	403	67,483	\$18	358
40% to 45%	17,348	\$25	408	13,687	\$17	391	31,035	\$21	400
45% to 50%	36,448	\$25	357	10,027	\$21	420	46,475	\$25	371
50% to 60%	94,702	\$25	303	13,687	\$22	357	108,389	\$24	310
60% to 70%	99,160	\$26	274	16,394	\$14	207	115,554	\$24	265
70% to 80%	25,467	\$22	200	12,733	\$14	195	38,200	\$19	198
80% to 90%	58,254	\$29	235	6,367	\$13	152	64,621	\$27	227
90% to 100%	25,467	\$28	208	0	\$0	0	25,467	\$28	208
100% to 125%	44,567	\$23	140	19,100	\$15	142	63,667	\$20	141
125% to 150%	19,100	\$29	141	0	\$0	0	19,100	\$29	141
150% to 200%	25,467	\$16	51	6,367	\$23	116	31,833	\$17	64
Greater than 200%	31,833	\$26	70	0	\$0	0	31,833	\$26	70
<b>Total</b>	<b>1,030,462</b>	<b>\$3</b>	<b>494</b>	<b>194,741</b>	<b>\$10</b>	<b>441</b>	<b>1,225,203</b>	<b>\$4</b>	<b>486</b>

□ 0

**TURN DATA REQUEST  
TURN-SDG&E-DR-03  
RATE REFORM OIR – R.12-06-013  
SDG&E RESPONSE  
DATE RECEIVED: July 2, 2013  
DATE RESPONDED: July 22, 2013**

2. Distribution recovery through demand differentiated BSF

II. With commodity TOU rate (Summer)

The non-CARE customers in this sample seeing above 200% change from current as compared to step 5 would see an average monthly impact of \$26, which would be about \$5.20 per transitional step in the 5-step progression. The CARE customers in this sample seeing above 150% change from current as compared to step 5 would see an average monthly impact of \$21, which would be about \$4.20 per transitional step in the 5-step progression.

% Impact Range	<i>Non-CARE</i>			<i>CARE</i>			<i>Combined</i>		
	Number of Customers	Avg. Monthly \$ Impact	Avg. Monthly kWh	Number of Customers	Avg. Monthly \$ Impact	Avg. Monthly kWh	Number of Customers	Avg. Monthly \$ Impact	Avg. Monthly kWh
Less than -50%	949	(\$1,007)	6,708	0	\$0	0	949	(\$1,007)	6,708
-45% to -50%	4,609	(\$116)	1,048	0	\$0	0	4,609	(\$116)	1,048
-40% to -45%	8,405	(\$147)	1,351	0	\$0	0	8,405	(\$147)	1,351
-35% to -40%	14,099	(\$146)	1,529	0	\$0	0	14,099	(\$146)	1,529
-30% to -35%	20,741	(\$111)	1,386	0	\$0	0	20,741	(\$111)	1,386
-25% to -30%	30,909	(\$76)	1,154	0	\$0	0	30,909	(\$76)	1,154
-20% to -25%	28,062	(\$55)	1,028	5,558	(\$29)	954	33,620	(\$51)	1,016
-15% to -20%	32,400	(\$32)	845	5,558	(\$21)	822	37,959	(\$31)	841
-10% to -15%	57,345	(\$22)	818	9,219	(\$15)	782	66,563	(\$21)	813
-5% to -10%	43,111	(\$10)	685	6,507	(\$10)	898	49,618	(\$10)	713
0% to -5%	37,688	(\$3)	682	5,558	(\$1)	700	43,246	(\$3)	684
No Change	0	\$0	0	0	\$0	0	0	\$0	0
0% to 5%	42,162	\$2	583	7,321	\$1	592	49,482	\$2	584
5% to 10%	22,911	\$8	540	7,321	\$6	640	30,232	\$7	564
10% to 15%	34,836	\$12	525	3,660	\$7	545	38,496	\$11	527
15% to 20%	21,957	\$16	479	10,981	\$17	684	32,938	\$16	547
20% to 25%	44,722	\$15	403	7,321	\$15	543	52,043	\$15	423
25% to 30%	58,410	\$18	418	0	\$0	0	58,410	\$18	418
30% to 35%	44,722	\$19	387	23,714	\$14	406	68,437	\$17	394
35% to 40%	18,302	\$29	491	13,687	\$14	376	31,989	\$22	442
40% to 45%	22,760	\$16	272	3,660	\$30	593	26,421	\$18	317
45% to 50%	56,502	\$26	363	10,027	\$24	443	66,529	\$26	375
50% to 60%	90,087	\$23	288	3,660	\$31	535	93,748	\$23	298
60% to 70%	83,721	\$23	251	16,394	\$17	238	100,114	\$22	249
70% to 80%	39,154	\$28	265	6,367	\$12	155	45,521	\$26	250
80% to 90%	38,200	\$28	229	22,760	\$18	214	60,960	\$24	224
90% to 100%	25,467	\$23	162	12,733	\$16	162	38,200	\$21	162
100% to 125%	31,833	\$21	143	6,367	\$11	103	38,200	\$20	136
125% to 150%	19,100	\$28	141	0	\$0	0	19,100	\$28	141
150% to 200%	25,467	\$16	51	6,367	\$21	116	31,833	\$17	64
Greater than 200%	31,833	\$26	70	0	\$0	0	31,833	\$26	70
<b>Total</b>	<b>1,030,462</b>	<b>\$1</b>	<b>494</b>	<b>194,741</b>	<b>\$10</b>	<b>441</b>	<b>1,225,203</b>	<b>\$3</b>	<b>486</b>

**TURN DATA REQUEST  
TURN-SDG&E-DR-03  
RATE REFORM OIR – R.12-06-013  
SDG&E RESPONSE  
DATE RECEIVED: July 2, 2013  
DATE RESPONDED: July 22, 2013**

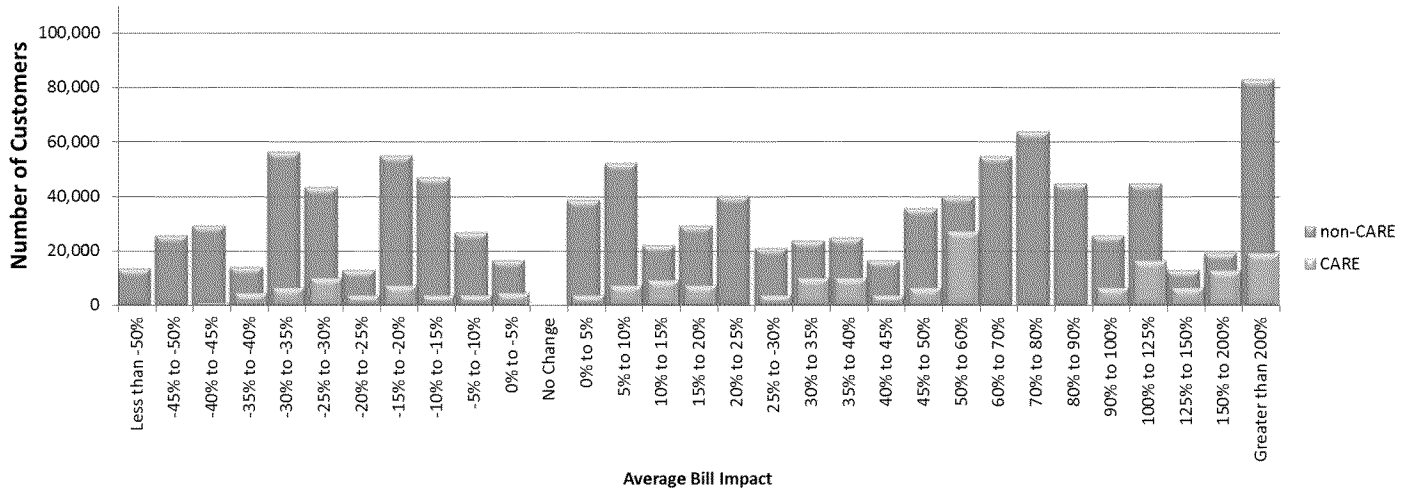
**WINTER: STEP 5 VERSUS CURRENT BILL IMPACT GRAPHS**

1. Distribution recovery through a basic service fee (BSF)

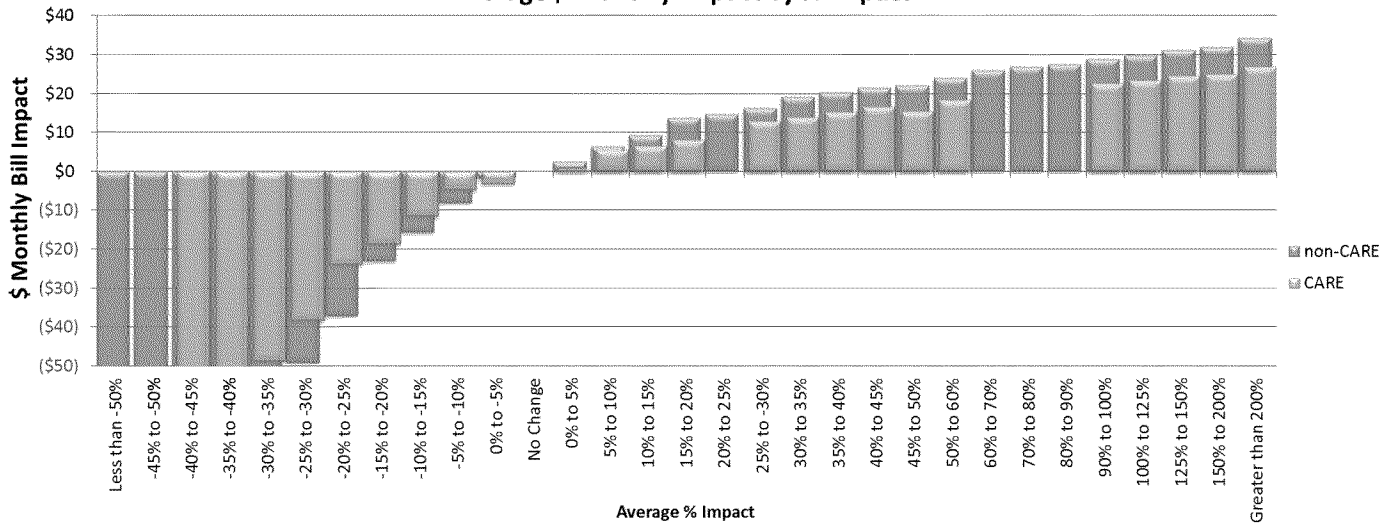
I. With commodity flat rate (Winter)

The non-CARE customers in this sample seeing above 200% change from current as compared to step 5 would see an average monthly impact of \$34, which would be about \$6.80 per transitional step in the 5-step progression. The CARE customers in this sample seeing above 200% change from current as compared to step 5 would see an average monthly impact of \$27, which would be about \$5.40 per transitional step in the 5-step progression.

**Number of Customers by % Impact**



**Average \$ Monthly Impact by % Impact**



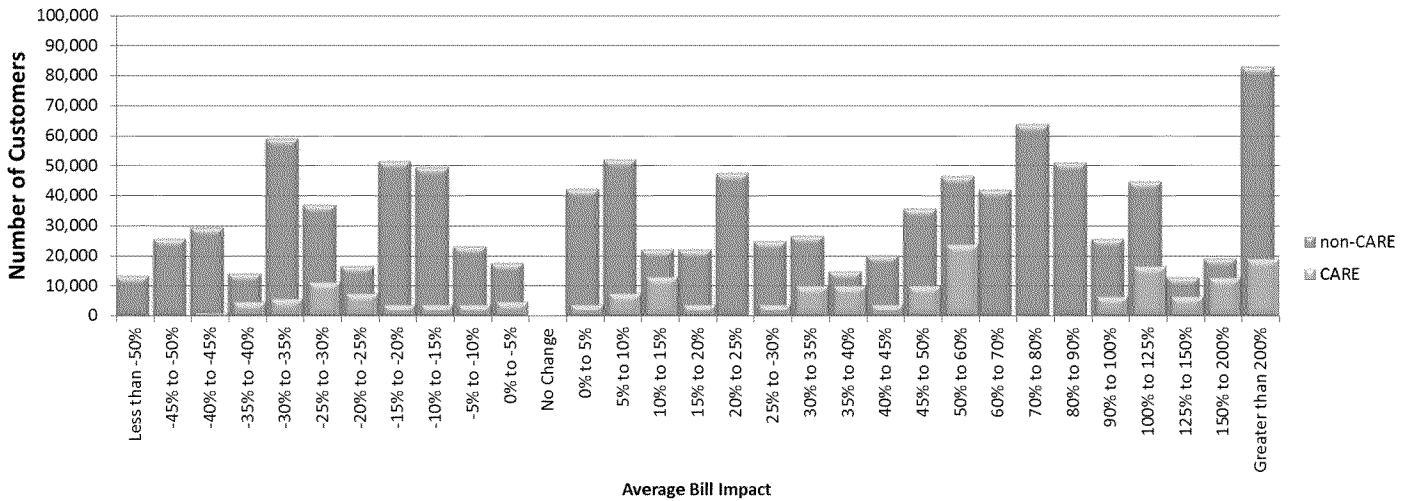
**TURN DATA REQUEST  
TURN-SDG&E-DR-03  
RATE REFORM OIR – R.12-06-013  
SDG&E RESPONSE  
DATE RECEIVED: July 2, 2013  
DATE RESPONDED: July 22, 2013**

1. Distribution recovery through a basic service fee (BSF)

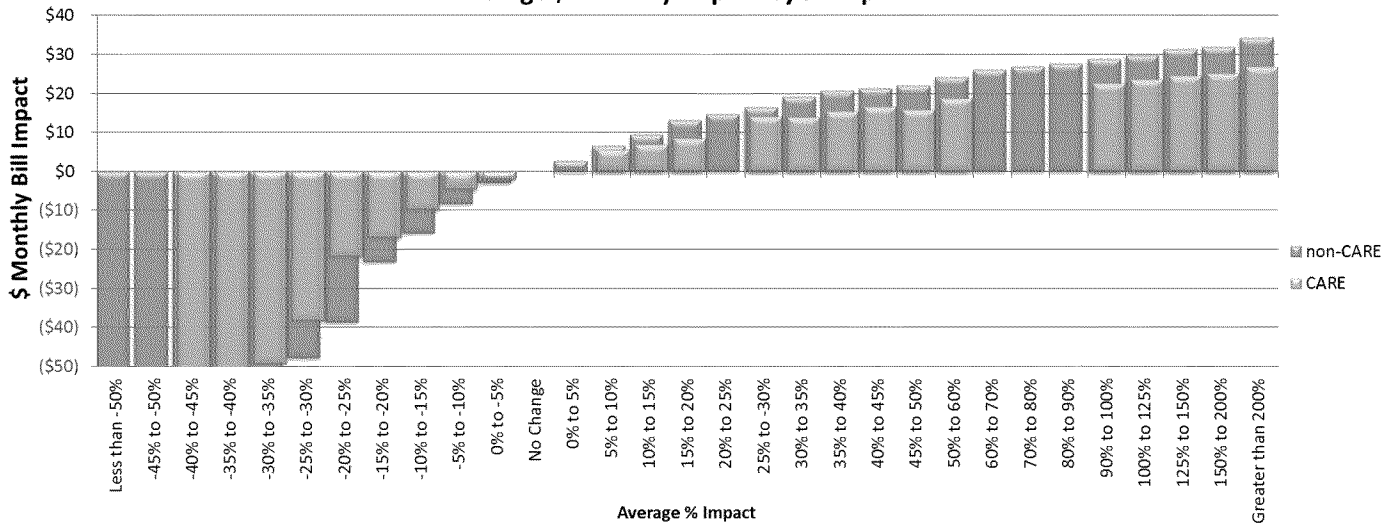
II. With commodity TOU rate (Winter)

The non-CARE customers in this sample seeing above 200% change from current as compared to step 5 would see an average monthly impact of \$34, which would be about \$6.80 per transitional step in the 5-step progression. The CARE customers in this sample seeing above 200% change from current as compared to step 5 would see an average monthly impact of \$27, which would be about \$5.40 per transitional step in the 5-step progression.

**Number of Customers by % Impact**



**Average \$ Monthly Impact by % Impact**





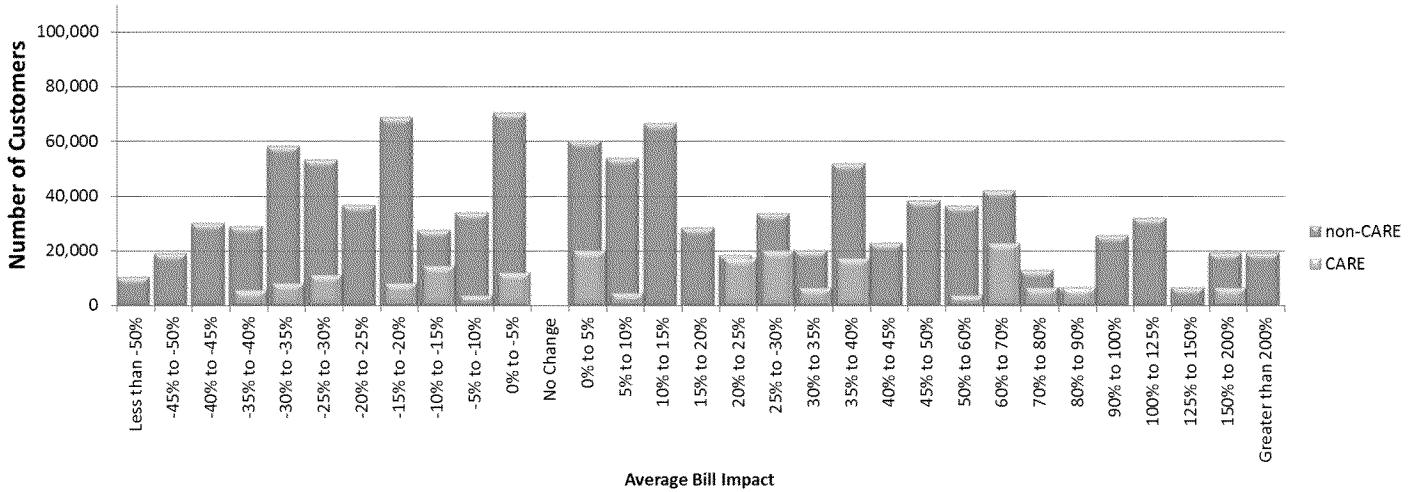
**TURN DATA REQUEST  
TURN-SDG&E-DR-03  
RATE REFORM OIR – R.12-06-013  
SDG&E RESPONSE  
DATE RECEIVED: July 2, 2013  
DATE RESPONDED: July 22, 2013**

2. Distribution recovery through demand differentiated BSF

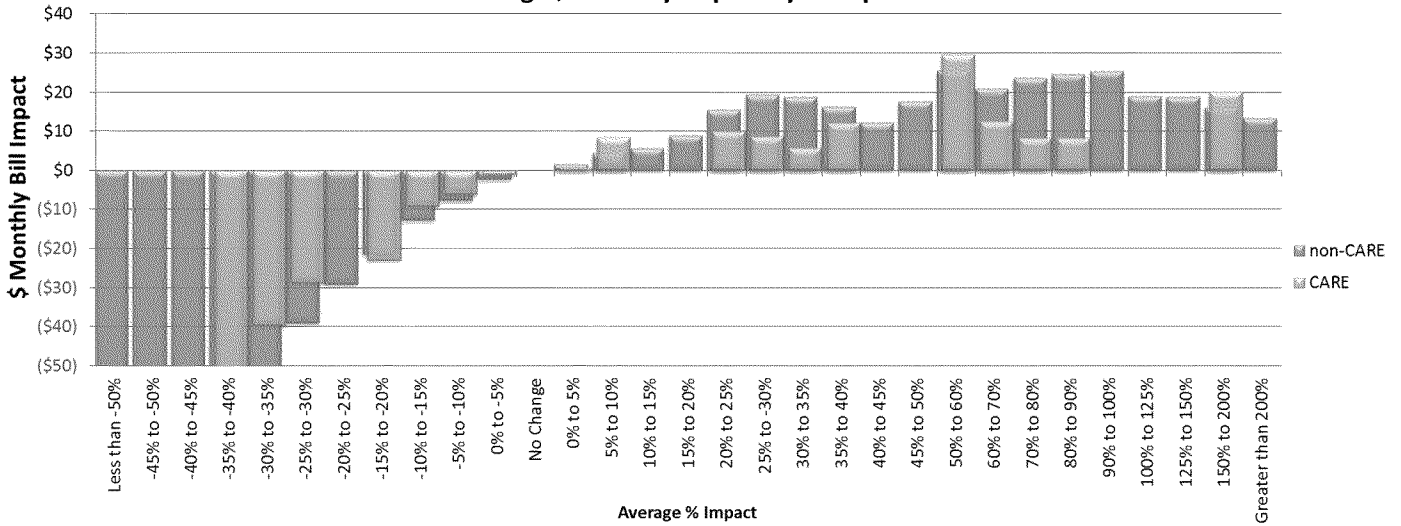
I. With commodity flat rate (Winter)

The non-CARE customers in this sample seeing above 200% change from current as compared to step 5 would see an average monthly impact of \$13, which would be about \$2.60 per transitional step in the 5-step progression. The CARE customers in this sample seeing above 150% change from current as compared to step 5 would see an average monthly impact of \$20, which would be about \$4.00 per transitional step in the 5-step progression.

**Number of Customers by % Impact**



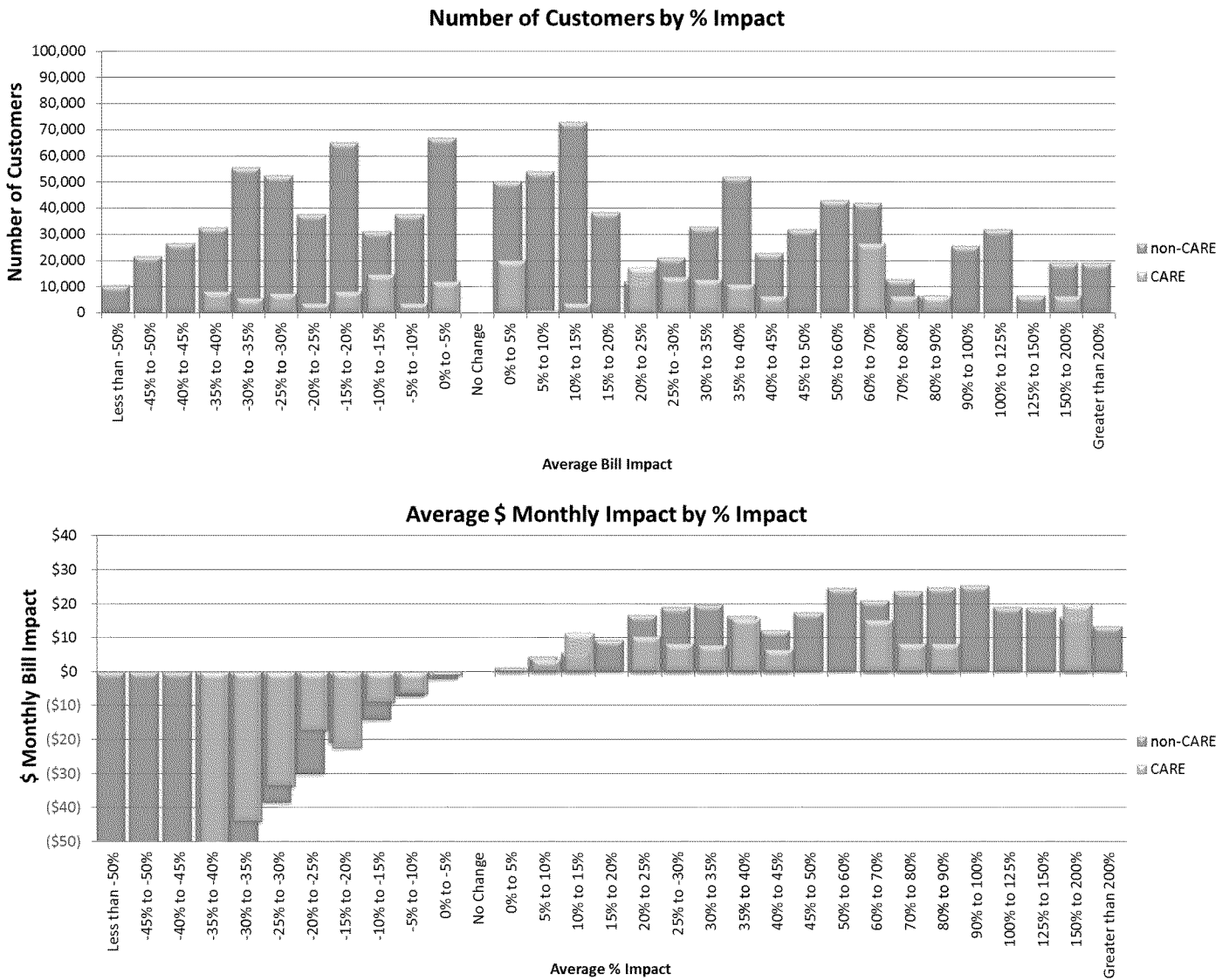
**Average \$ Monthly Impact by % Impact**



**TURN DATA REQUEST  
TURN-SDG&E-DR-03  
RATE REFORM OIR – R.12-06-013  
SDG&E RESPONSE  
DATE RECEIVED: July 2, 2013  
DATE RESPONDED: July 22, 2013**

- 2. Distribution recovery through demand differentiated BSF
  - II. With commodity TOU rate (Winter)

The non-CARE customers in this sample seeing above 200% change from current as compared to step 5 would see an average monthly impact of \$13, which would be about \$2.60 per transitional step in the 5-step progression. The CARE customers in this sample seeing above 150% change from current as compared to step 5 would see an average monthly impact of \$20, which would be about \$4.00 per transitional step in the 5-step progression.



**TURN DATA REQUEST  
TURN-SDG&E-DR-03  
RATE REFORM OIR – R.12-06-013  
SDG&E RESPONSE  
DATE RECEIVED: July 2, 2013  
DATE RESPONDED: July 22, 2013**

**WINTER: STEP 5 VERSUS CURRENT ILLUSTRATIVE DATA TABLES**

1. Distribution recovery through a basic service fee (BSF)

I. With commodity flat rate (Winter)

The non-CARE customers in this sample seeing above 200% change from current as compared to step 5 would see an average monthly impact of \$34, which would be about \$6.80 per transitional step in the 5-step progression. The CARE customers in this sample seeing above 200% change from current as compared to step 5 would see an average monthly impact of \$27, which would be about \$5.40 per transitional step in the 5-step progression.

% Impact Range	<i><b>Non-CARE</b></i>			<i><b>CARE</b></i>			<i><b>Combined</b></i>		
	Number of Customers	Avg. Monthly \$ Impact	Avg. Monthly kWh	Number of Customers	Avg. Monthly \$ Impact	Avg. Monthly kWh	Number of Customers	Avg. Monthly \$ Impact	Avg. Monthly kWh
Less than -50%	13,285	(\$364)	2,555	0	\$0	0	13,285	(\$364)	2,555
-45% to -50%	25,621	(\$178)	1,575	0	\$0	0	25,621	(\$178)	1,575
-40% to -45%	29,281	(\$116)	1,204	949	(\$105)	1,705	30,230	(\$116)	1,220
-35% to -40%	13,963	(\$82)	1,000	4,609	(\$76)	1,391	18,572	(\$81)	1,097
-30% to -35%	56,396	(\$58)	863	6,507	(\$49)	1,161	62,903	(\$57)	893
-25% to -30%	43,246	(\$49)	899	10,167	(\$38)	1,045	53,413	(\$47)	927
-20% to -25%	12,879	(\$37)	905	3,660	(\$24)	811	16,539	(\$34)	884
-15% to -20%	55,041	(\$23)	704	7,321	(\$19)	750	62,361	(\$23)	710
-10% to -15%	46,766	(\$16)	661	3,660	(\$12)	853	50,426	(\$15)	674
-5% to -10%	26,707	(\$8)	662	3,660	(\$5)	527	30,367	(\$8)	645
0% to -5%	16,539	(\$2)	547	4,609	(\$3)	749	21,149	(\$2)	591
No Change	0	\$0	0	0	\$0	0	0	\$0	0
0% to 5%	38,496	\$2	608	3,660	\$1	564	42,157	\$2	604
5% to 10%	52,043	\$6	565	7,321	\$6	519	59,364	\$6	560
10% to 15%	21,962	\$9	466	9,219	\$7	504	31,181	\$9	477
15% to 20%	29,283	\$14	496	7,321	\$8	472	36,603	\$13	491
20% to 25%	40,108	\$15	395	0	\$0	0	40,108	\$15	395
25% to 30%	21,008	\$16	394	3,660	\$13	510	24,668	\$16	411
30% to 35%	23,714	\$19	402	10,027	\$14	435	33,741	\$18	412
35% to 40%	24,668	\$20	360	10,027	\$15	426	34,695	\$19	379
40% to 45%	16,394	\$22	349	3,660	\$17	386	20,054	\$21	355
45% to 50%	35,494	\$22	316	6,367	\$16	296	41,860	\$21	313
50% to 60%	40,108	\$24	304	27,375	\$19	327	67,483	\$22	313
60% to 70%	54,594	\$26	276	0	\$0	0	54,594	\$26	276
70% to 80%	63,667	\$27	257	0	\$0	0	63,667	\$27	257
80% to 90%	44,567	\$28	227	0	\$0	0	44,567	\$28	227
90% to 100%	25,467	\$29	212	6,367	\$23	231	31,833	\$28	216
100% to 125%	44,567	\$30	190	16,394	\$24	207	60,960	\$28	195
125% to 150%	12,733	\$31	162	6,367	\$25	177	19,100	\$29	167
150% to 200%	19,100	\$32	142	12,733	\$25	164	31,833	\$29	150
Greater than 200%	82,767	\$34	59	19,100	\$27	107	101,867	\$33	68
<b>Total</b>	<b>1,030,462</b>	<b>(\$7)</b>	<b>518</b>	<b>194,741</b>	<b>\$6</b>	<b>462</b>	<b>1,225,203</b>	<b>(\$4)</b>	<b>509</b>

**TURN DATA REQUEST  
TURN-SDG&E-DR-03  
RATE REFORM OIR – R.12-06-013  
SDG&E RESPONSE  
DATE RECEIVED: July 2, 2013  
DATE RESPONDED: July 22, 2013**

I. Distribution recovery through a basic service fee (BSF)

II. With commodity TOU rate (Winter)

The non-CARE customers in this sample seeing above 200% change from current as compared to step 5 would see an average monthly impact of \$34, which would be about \$6.80 per transitional step in the 5-step progression. The CARE customers in this sample seeing above 200% change from current as compared to step 5 would see an average monthly impact of \$27, which would be about \$5.40 per transitional step in the 5-step progression.

% Impact Range	<i>Non-CARE</i>			<i>CARE</i>			<i>Combined</i>		
	Number of Customers	Avg. Monthly \$ Impact	Avg. Monthly kWh	Number of Customers	Avg. Monthly \$ Impact	Avg. Monthly kWh	Number of Customers	Avg. Monthly \$ Impact	Avg. Monthly kWh
Less than -50%	13,285	(\$363)	2,555	0	\$0	0	13,285	(\$363)	2,555
-45% to -50%	25,621	(\$177)	1,575	0	\$0	0	25,621	(\$177)	1,575
-40% to -45%	29,281	(\$116)	1,204	949	(\$105)	1,705	30,230	(\$115)	1,220
-35% to -40%	13,963	(\$80)	977	4,609	(\$76)	1,391	18,572	(\$79)	1,080
-30% to -35%	59,107	(\$59)	881	5,558	(\$49)	1,194	64,665	(\$58)	908
-25% to -30%	36,874	(\$48)	875	11,116	(\$38)	1,038	47,991	(\$46)	913
-20% to -25%	16,539	(\$39)	918	7,321	(\$22)	782	23,860	(\$34)	876
-15% to -20%	51,380	(\$23)	704	3,660	(\$17)	748	55,041	(\$23)	707
-10% to -15%	49,477	(\$16)	665	3,660	(\$10)	853	53,138	(\$15)	678
-5% to -10%	23,046	(\$8)	665	3,660	(\$5)	527	26,707	(\$8)	646
0% to -5%	17,488	(\$3)	572	4,609	(\$2)	749	22,097	(\$3)	609
No Change	0	\$0	0	0	\$0	0	0	\$0	0
0% to 5%	42,157	\$3	601	3,660	\$0	564	45,817	\$3	598
5% to 10%	52,043	\$7	565	7,321	\$6	519	59,364	\$7	560
10% to 15%	21,962	\$10	466	12,879	\$7	496	34,841	\$9	477
15% to 20%	21,962	\$13	490	3,660	\$9	471	25,622	\$13	487
20% to 25%	47,429	\$15	414	0	\$0	0	47,429	\$15	414
25% to 30%	24,668	\$17	395	3,660	\$14	510	28,329	\$16	410
30% to 35%	26,421	\$19	388	10,027	\$14	435	36,448	\$18	401
35% to 40%	14,641	\$21	363	10,027	\$16	426	24,668	\$19	389
40% to 45%	20,054	\$21	354	3,660	\$17	386	23,714	\$21	359
45% to 50%	35,494	\$22	316	10,027	\$16	296	45,521	\$21	312
50% to 60%	46,475	\$24	302	23,714	\$19	331	70,189	\$22	312
60% to 70%	41,860	\$26	275	0	\$0	0	41,860	\$26	275
70% to 80%	63,667	\$27	260	0	\$0	0	63,667	\$27	260
80% to 90%	50,933	\$28	228	0	\$0	0	50,933	\$28	228
90% to 100%	25,467	\$29	212	6,367	\$23	231	31,833	\$28	216
100% to 125%	44,567	\$30	190	16,394	\$24	207	60,960	\$28	195
125% to 150%	12,733	\$31	162	6,367	\$25	177	19,100	\$29	167
150% to 200%	19,100	\$32	142	12,733	\$25	164	31,833	\$29	150
Greater than 200%	82,767	\$34	59	19,100	\$27	107	101,867	\$33	68
<b>Total</b>	<b>1,030,462</b>	<b>(\$6)</b>	<b>518</b>	<b>194,741</b>	<b>\$7</b>	<b>462</b>	<b>1,225,203</b>	<b>(\$4)</b>	<b>509</b>

**TURN DATA REQUEST  
TURN-SDG&E-DR-03  
RATE REFORM OIR – R.12-06-013  
SDG&E RESPONSE  
DATE RECEIVED: July 2, 2013  
DATE RESPONDED: July 22, 2013**

2. Distribution recovery through demand differentiated BSF

I. With commodity flat rate (Winter)

The non-CARE customers in this sample seeing above 200% change from current as compared to step 5 would see an average monthly impact of \$13, which would be about \$2.60 per transitional step in the 5-step progression. The CARE customers in this sample seeing above 150% change from current as compared to step 5 would see an average monthly impact of \$20, which would be about \$4.00 per transitional step in the 5-step progression.

% Impact Range	<i>Non-CARE</i>			<i>CARE</i>			<i>Combined</i>		
	Number of Customers	Avg. Monthly \$ Impact	Avg. Monthly kWh	Number of Customers	Avg. Monthly \$ Impact	Avg. Monthly kWh	Number of Customers	Avg. Monthly \$ Impact	Avg. Monthly kWh
Less than -50%	10,438	(\$358)	2,572	0	\$0	0	10,438	(\$358)	2,572
-45% to -50%	18,843	(\$160)	1,431	0	\$0	0	18,843	(\$160)	1,431
-40% to -45%	30,095	(\$124)	1,250	0	\$0	0	30,095	(\$124)	1,250
-35% to -40%	29,011	(\$93)	1,111	5,558	(\$75)	1,401	34,569	(\$90)	1,158
-30% to -35%	58,158	(\$58)	851	8,270	(\$40)	877	66,428	(\$56)	854
-25% to -30%	53,273	(\$39)	720	11,116	(\$29)	786	64,389	(\$37)	732
-20% to -25%	36,739	(\$29)	678	0	\$0	0	36,739	(\$29)	678
-15% to -20%	68,723	(\$21)	660	8,270	(\$23)	1,034	76,992	(\$22)	700
-10% to -15%	27,515	(\$13)	585	14,636	(\$9)	627	42,151	(\$12)	600
-5% to -10%	33,887	(\$8)	578	3,660	(\$6)	564	37,547	(\$8)	576
0% to -5%	70,480	(\$2)	539	11,930	(\$1)	472	82,410	(\$2)	529
No Change	0	\$0	0	0	\$0	0	0	\$0	0
0% to 5%	60,308	\$2	489	20,054	\$1	401	80,362	\$1	467
5% to 10%	53,926	\$4	383	4,609	\$9	784	58,535	\$5	415
10% to 15%	66,529	\$6	313	0	\$0	0	66,529	\$6	313
15% to 20%	28,324	\$9	344	0	\$0	0	28,324	\$9	344
20% to 25%	18,297	\$16	480	17,348	\$10	454	35,644	\$13	467
25% to 30%	33,741	\$20	459	20,054	\$9	328	53,795	\$16	410
30% to 35%	20,054	\$19	398	6,367	\$6	177	26,421	\$16	344
35% to 40%	51,887	\$16	293	17,348	\$12	300	69,235	\$15	295
40% to 45%	22,760	\$12	200	0	\$0	0	22,760	\$12	200
45% to 50%	38,200	\$18	258	0	\$0	0	38,200	\$18	258
50% to 60%	36,448	\$26	322	3,660	\$30	510	40,108	\$26	339
60% to 70%	41,860	\$21	228	22,760	\$13	196	64,621	\$18	217
70% to 80%	12,733	\$24	215	6,367	\$8	106	19,100	\$19	179
80% to 90%	6,367	\$25	194	6,367	\$8	103	12,733	\$17	148
90% to 100%	25,467	\$25	191	0	\$0	0	25,467	\$25	191
100% to 125%	31,833	\$19	112	0	\$0	0	31,833	\$19	112
125% to 150%	6,367	\$19	97	0	\$0	0	6,367	\$19	97
150% to 200%	19,100	\$16	41	6,367	\$20	111	25,467	\$17	59
Greater than 200%	19,100	\$13	21	0	\$0	0	19,100	\$13	21
<b>Total</b>	<b>1,030,462</b>	<b>(\$13)</b>	<b>518</b>	<b>194,741</b>	<b>(\$1)</b>	<b>462</b>	<b>1,225,203</b>	<b>(\$11)</b>	<b>509</b>

□ ð

**TURN DATA REQUEST  
TURN-SDG&E-DR-03  
RATE REFORM OIR – R.12-06-013  
SDG&E RESPONSE  
DATE RECEIVED: July 2, 2013  
DATE RESPONDED: July 22, 2013**

□ ð

2. Distribution recovery through demand differentiated BSF

II. With commodity TOU rate (Winter)

The non-CARE customers in this sample seeing above 200% change from current as compared to step 5 would see an average monthly impact of \$13, which would be about \$2.60 per transitional step in the 5-step progression. The CARE customers in this sample seeing above 150% change from current as compared to step 5 would see an average monthly impact of \$20, which would be about \$4.00 per transitional step in the 5-step progression.

% Impact Range	<i>Non-CARE</i>			<i>CARE</i>			<i>Combined</i>		
	Number of Customers	Avg. Monthly \$ Impact	Avg. Monthly kWh	Number of Customers	Avg. Monthly \$ Impact	Avg. Monthly kWh	Number of Customers	Avg. Monthly \$ Impact	Avg. Monthly kWh
Less than -50%	10,438	(\$357)	2,572	0	\$0	0	10,438	(\$357)	2,572
-45% to -50%	21,555	(\$148)	1,335	0	\$0	0	21,555	(\$148)	1,335
-40% to -45%	26,435	(\$130)	1,312	0	\$0	0	26,435	(\$130)	1,312
-35% to -40%	32,671	(\$87)	1,056	8,270	(\$61)	1,164	40,941	(\$81)	1,077
-30% to -35%	55,447	(\$60)	872	5,558	(\$44)	975	61,005	(\$58)	881
-25% to -30%	52,324	(\$38)	711	7,456	(\$34)	913	59,780	(\$38)	736
-20% to -25%	37,688	(\$30)	693	3,660	(\$17)	527	41,348	(\$29)	678
-15% to -20%	65,062	(\$21)	646	8,270	(\$22)	1,034	73,332	(\$21)	689
-10% to -15%	31,176	(\$14)	625	14,636	(\$9)	627	45,812	(\$13)	626
-5% to -10%	37,547	(\$7)	569	3,660	(\$7)	564	41,208	(\$7)	568
0% to -5%	66,820	(\$2)	542	11,930	(\$1)	472	78,750	(\$2)	531
No Change	0	\$0	0	0	\$0	0	0	\$0	0
0% to 5%	50,281	\$1	468	20,054	\$1	401	70,335	\$1	449
5% to 10%	53,926	\$5	428	949	\$4	518	54,875	\$4	430
10% to 15%	72,895	\$6	320	3,660	\$12	853	76,556	\$6	346
15% to 20%	38,351	\$9	354	0	\$0	0	38,351	\$9	354
20% to 25%	11,930	\$17	494	17,348	\$11	454	29,278	\$13	471
25% to 30%	21,008	\$19	458	13,687	\$8	323	34,695	\$15	405
30% to 35%	32,787	\$20	422	12,733	\$8	257	45,521	\$17	376
35% to 40%	51,887	\$17	293	10,981	\$16	380	62,868	\$16	308
40% to 45%	22,760	\$12	200	6,367	\$7	161	29,127	\$11	191
45% to 50%	31,833	\$18	257	0	\$0	0	31,833	\$18	257
50% to 60%	42,814	\$25	312	0	\$0	0	42,814	\$25	312
60% to 70%	41,860	\$21	228	26,421	\$15	239	68,281	\$19	232
70% to 80%	12,733	\$24	215	6,367	\$8	106	19,100	\$19	179
80% to 90%	6,367	\$25	194	6,367	\$8	103	12,733	\$17	148
90% to 100%	25,467	\$25	191	0	\$0	0	25,467	\$25	191
100% to 125%	31,833	\$19	112	0	\$0	0	31,833	\$19	112
125% to 150%	6,367	\$19	97	0	\$0	0	6,367	\$19	97
150% to 200%	19,100	\$16	41	6,367	\$20	111	25,467	\$17	59
Greater than 200%	19,100	\$13	21	0	\$0	0	19,100	\$13	21
<b>Total</b>	<b>1,030,462</b>	<b>(\$13)</b>	<b>518</b>	<b>194,741</b>	<b>(\$0)</b>	<b>462</b>	<b>1,225,203</b>	<b>(\$11)</b>	<b>509</b>

**TURN DATA REQUEST  
 TURN-SDG&E-DR-03  
 RATE REFORM OIR – R.12-06-013  
 SDG&E RESPONSE  
 DATE RECEIVED: July 2, 2013  
 DATE RESPONDED: July 22, 2013**

5. What percentage of SDG&E residential customers are expected to fall into each of the proposed Demand-differentiated basic service fee categories shown in Table 2?

**SDG&E Response 05:**

Based on the SDG&E data sample used in this proceeding, the percent of bill-months in each of the 3 demand differentiated basic service fee categories are as follows:

Non-coincident Demand Range	% of Bill Months
<3kW	30%
<7kW	48%
7kW and above	22%