

2012 California Energy Consumption – Residential Data



California Public Utilities Commission Policy & Planning Division July 2013

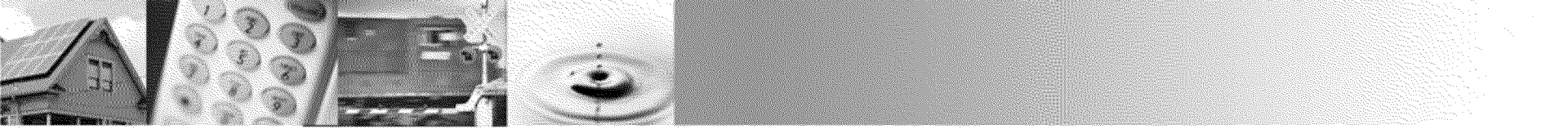




Objective & Key Takeaways

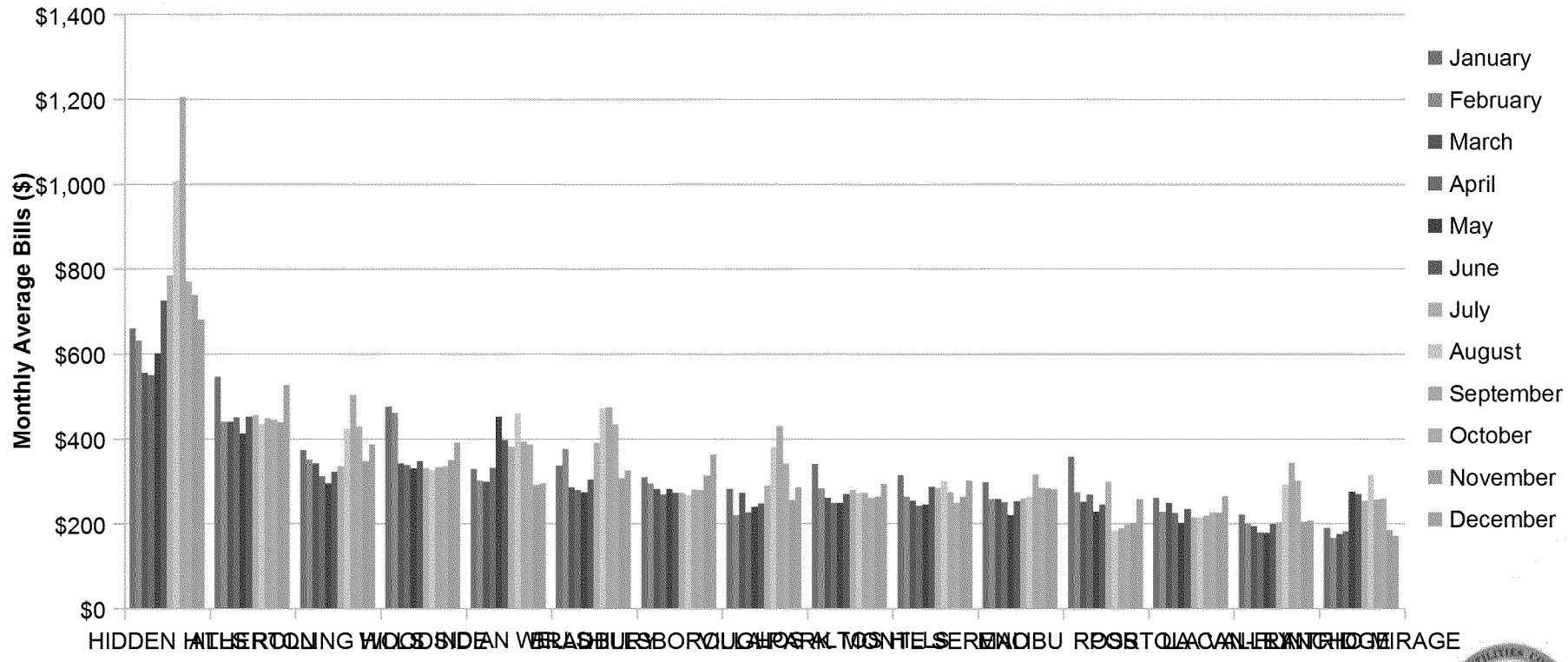
- The objective is to show aggregated energy data by city.
- This data is only Residential Data for calendar year 2012.
- The data shows
 - Highest & Lowest bills by City
 - Highest & Lowest Consumption by City
 - Average monthly rates charged by each Utility
 - Average monthly usage per utility territory
- Need further information?
 - Contact the CPUC's Policy & Planning Division
 - <http://www.cpuc.ca.gov/PUC/aboutus/Divisions/ppd/>





15 Cities that Pay the Most

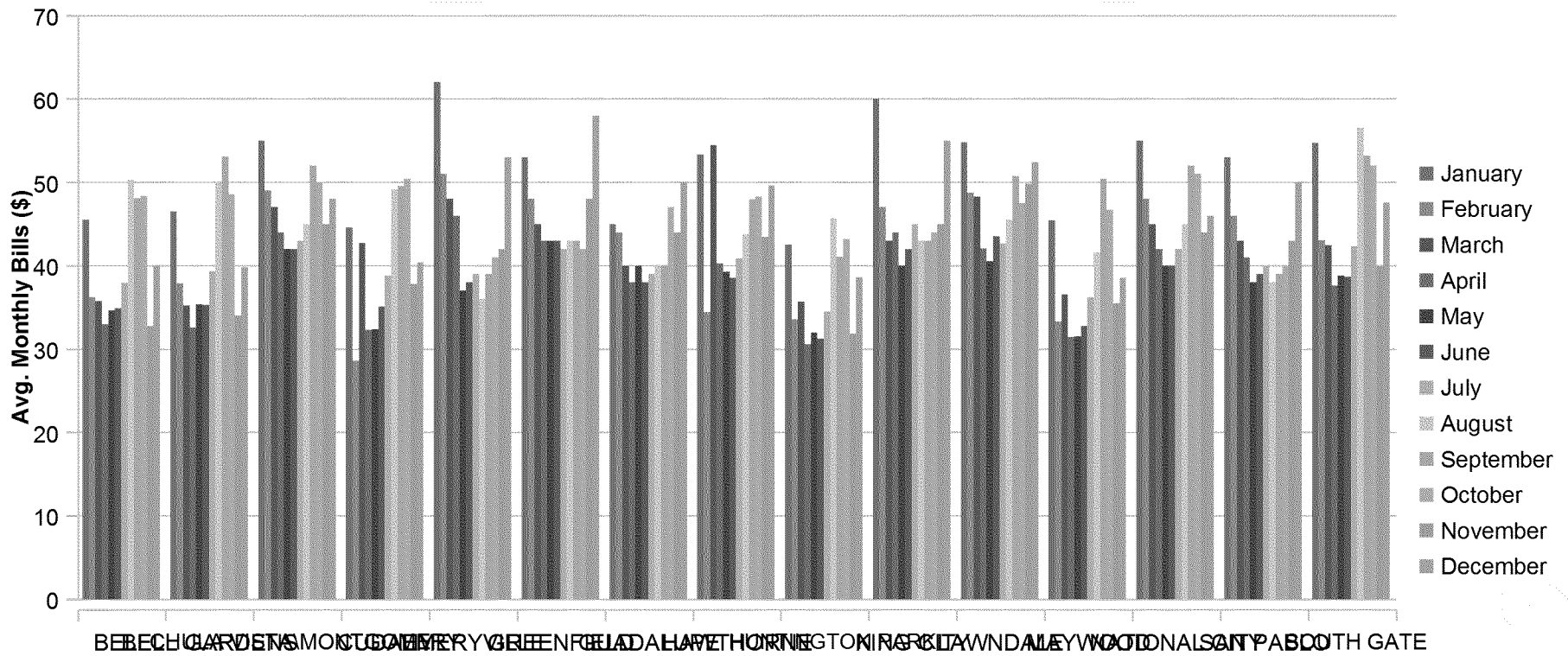
2012 Highest Monthly Residential Bills 15 Cities that Pay the Most

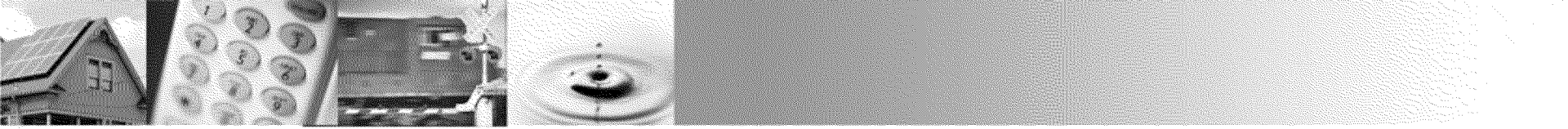




15 Cities that Pay the Least

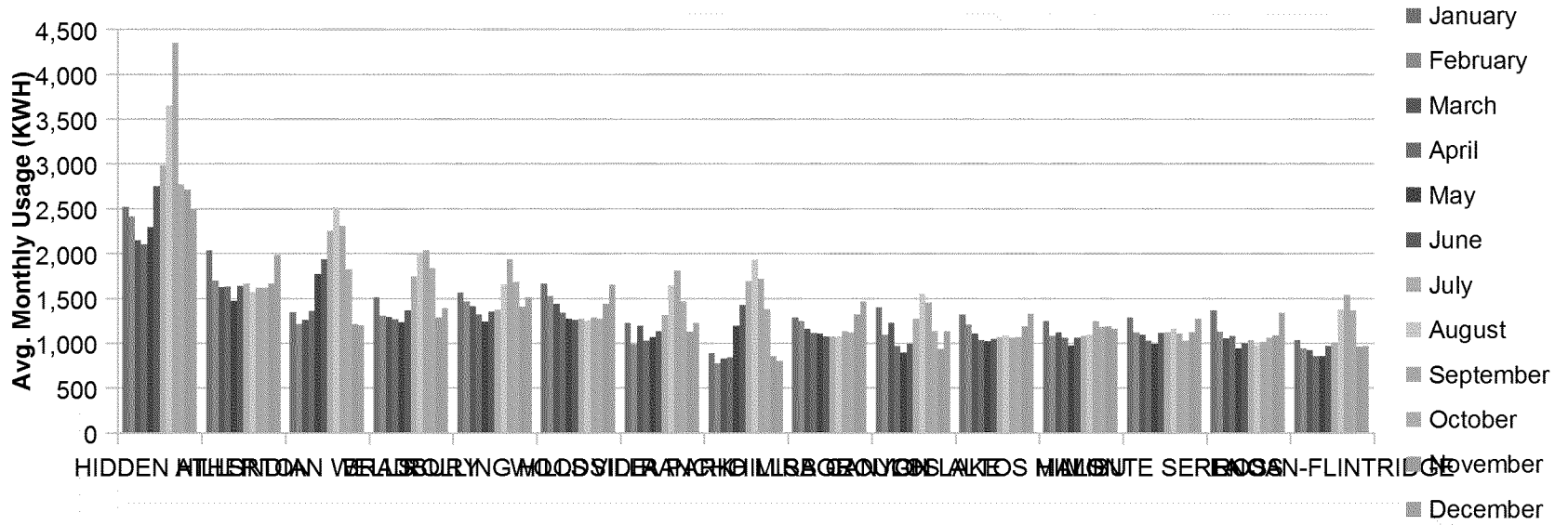
15 Cities with the Lowest Avg. Bills per month 2012 Residential Data





15 Cities that Consume the Most

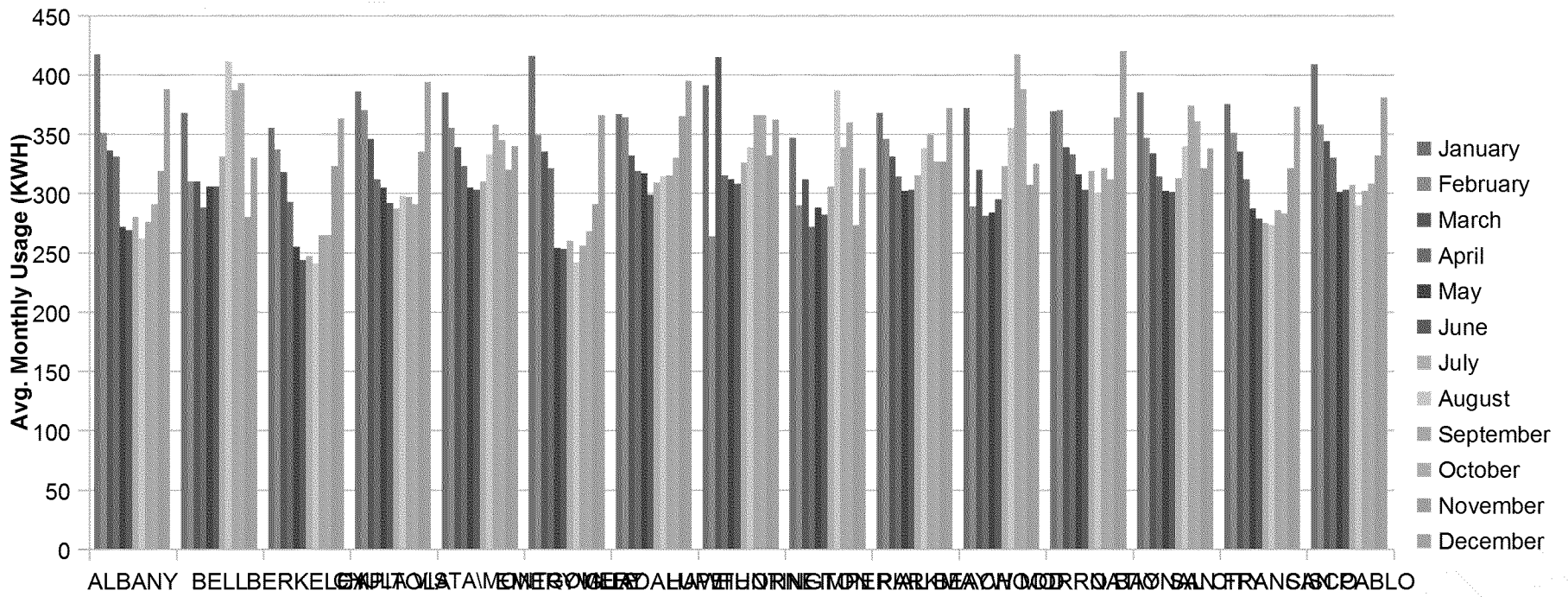
2012 Highest Monthly Average Consumption Top 15 Cities that use the most electricity





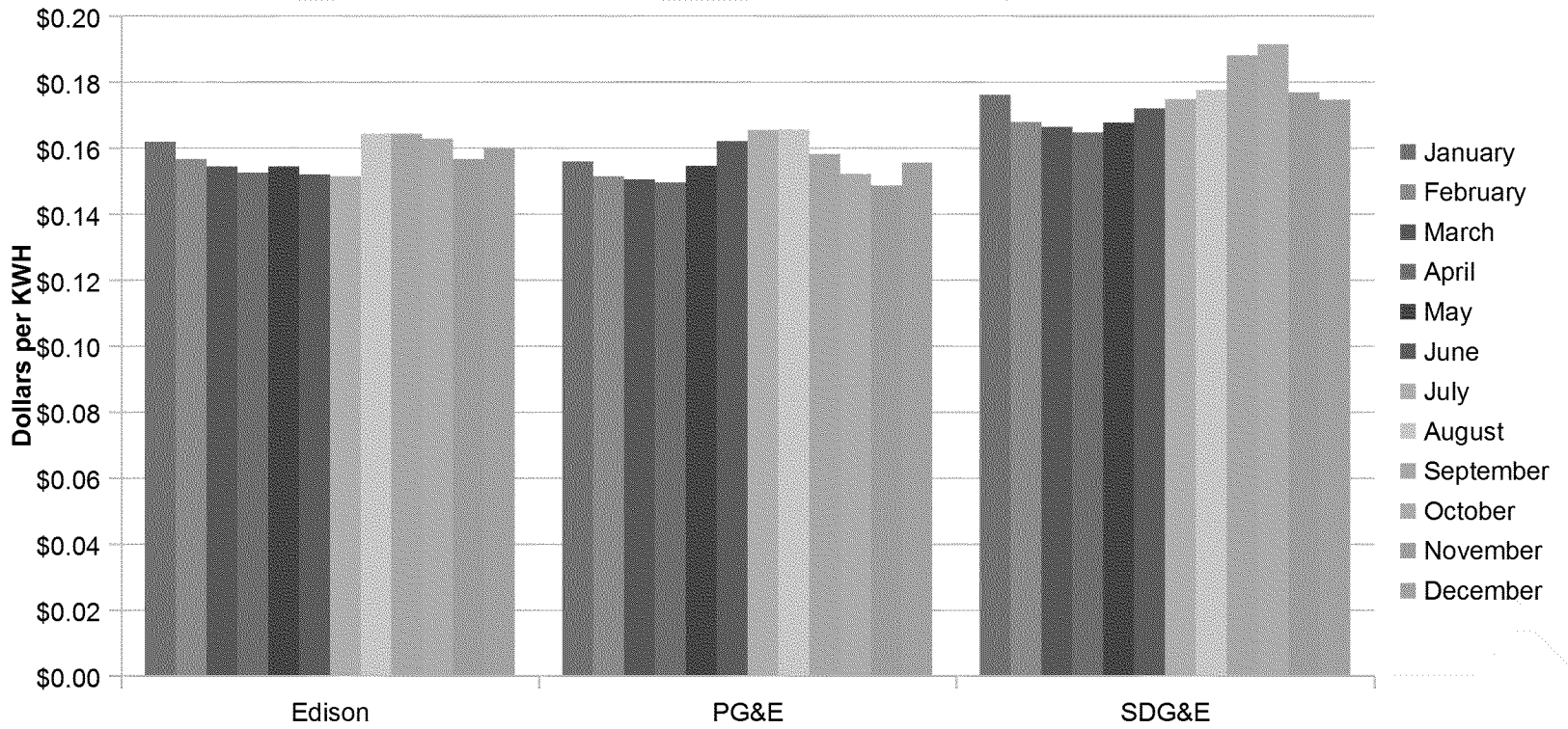
15 Cities with the Lowest Consumption

15 Cities with the Lowest Usage 2012 Residential Data



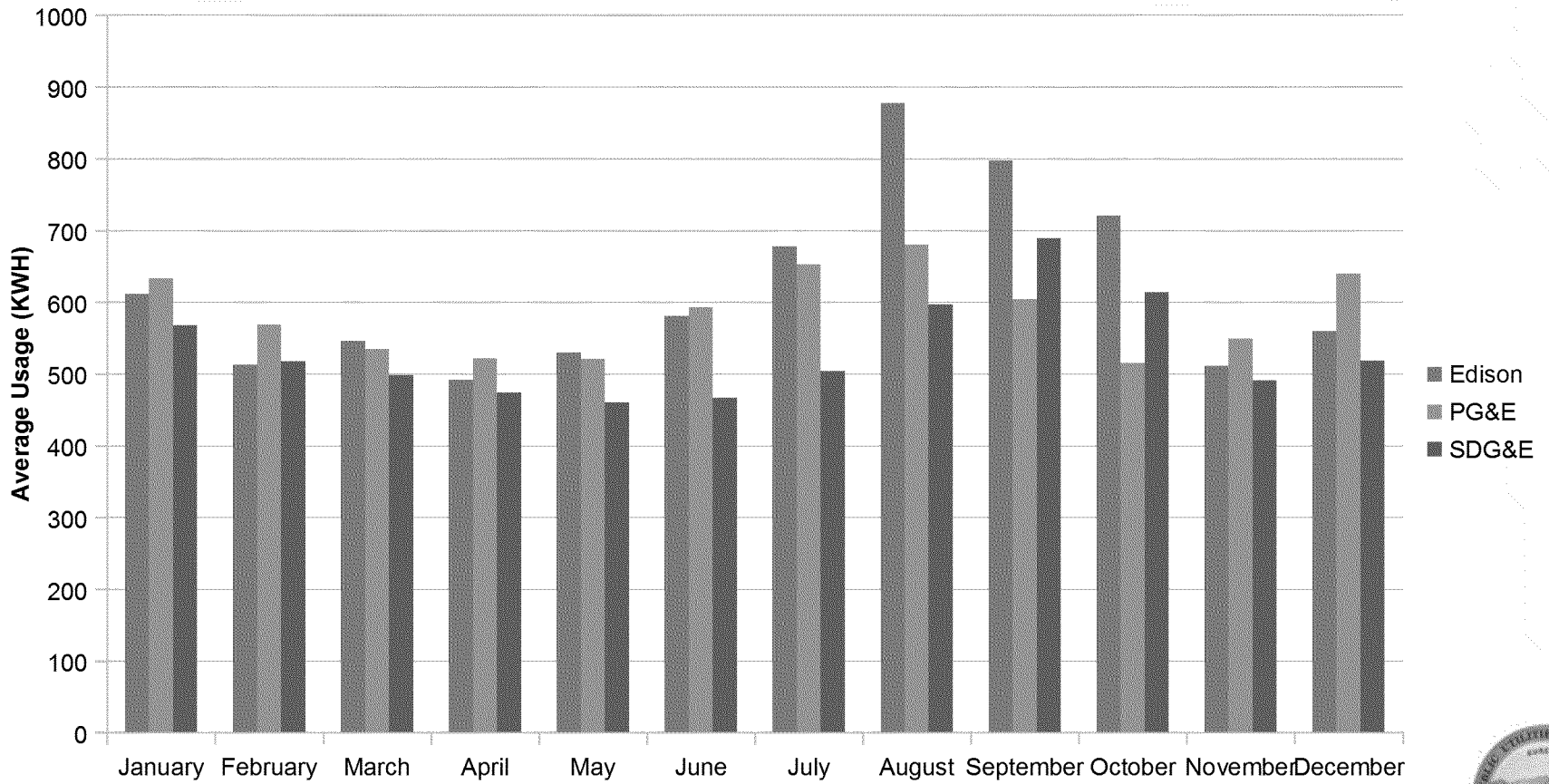
Average Monthly Rate by Utility – Residential Data for 2012

2012 Average Residential Rate



Average Usage – Residential Data for 2012

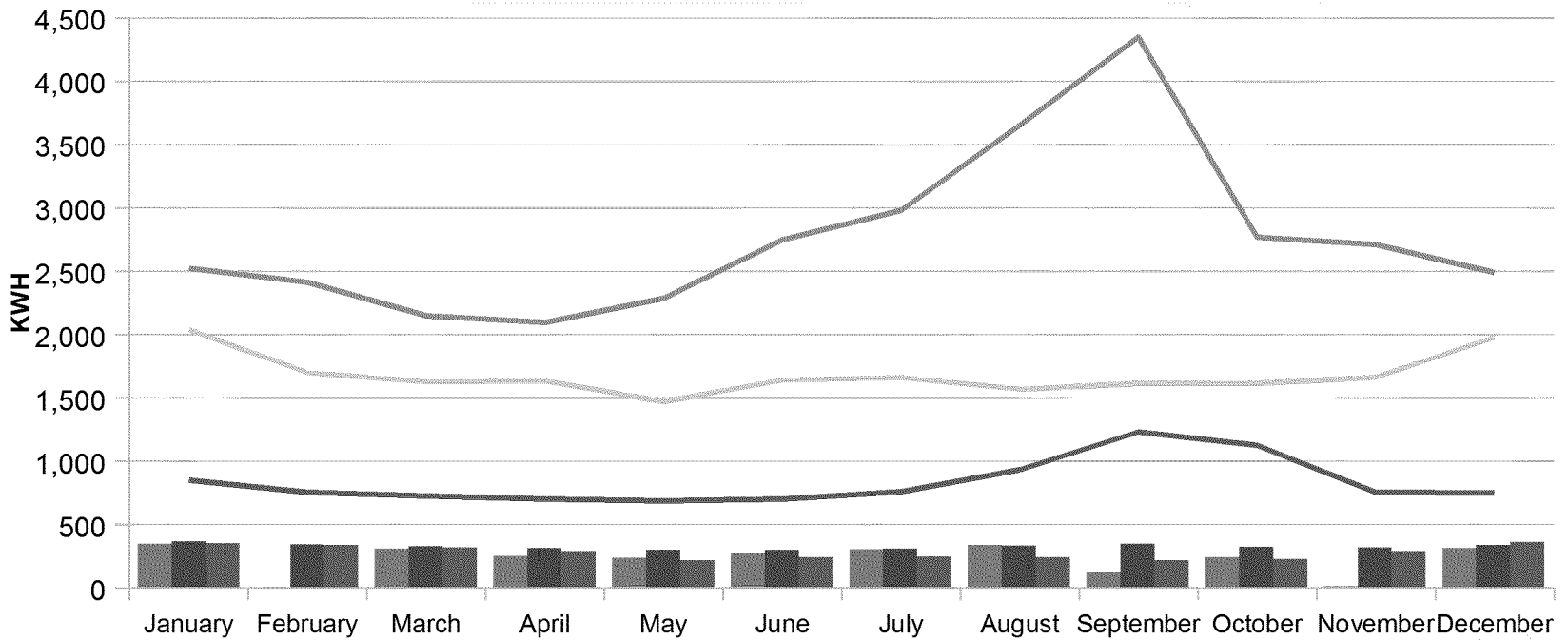
2012 Residential Data - Monthly Avg. Usage by Utility





Minimum & Maximum Usage – Residential Data for 2012

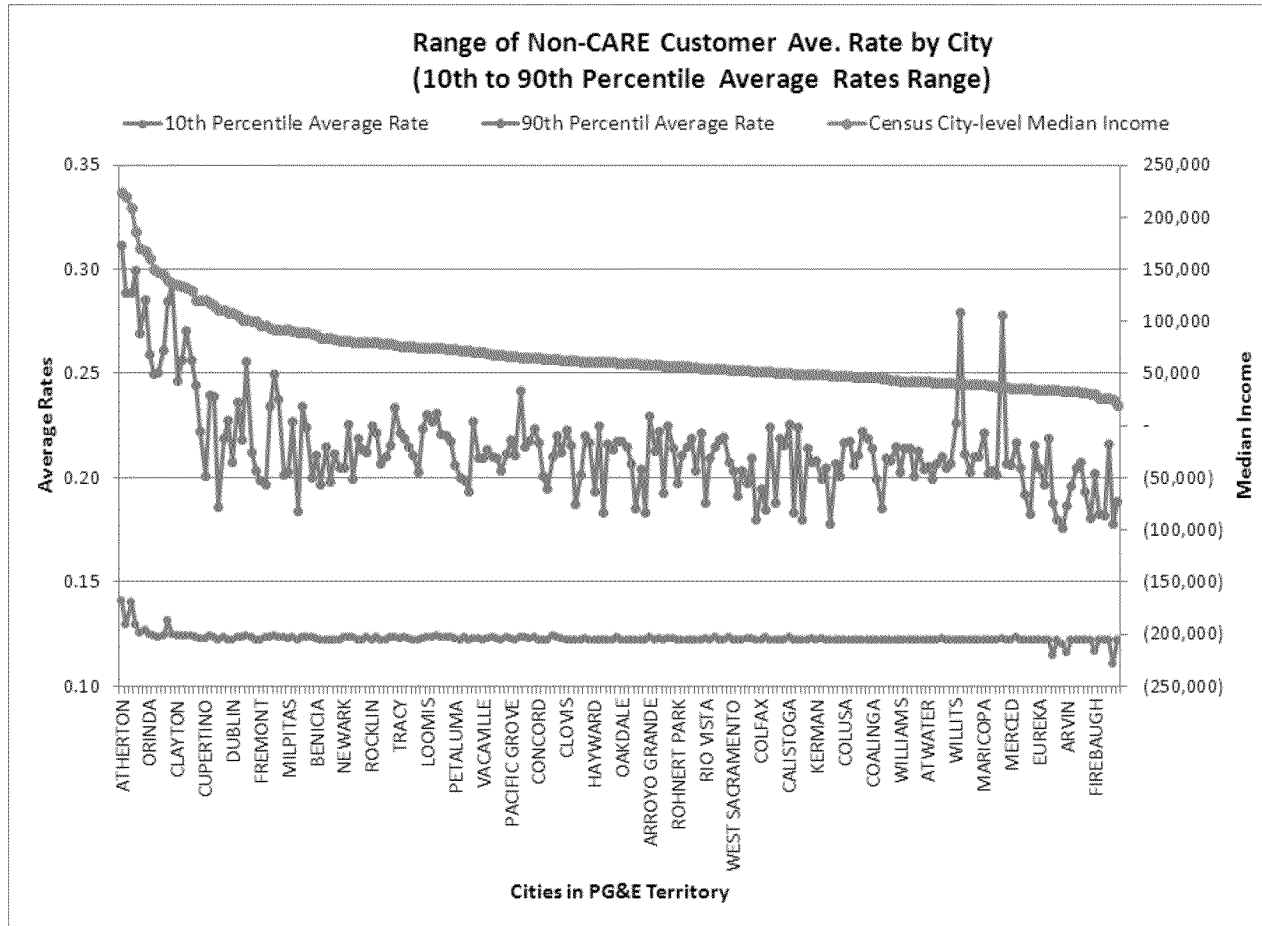
Min & Max Usage by Utility by Month



Edison - Min of Average monthly usage (KWH) per household
 SDG&E - Min of Average monthly usage (KWH) per household
 PG&E - Min of Average monthly usage (KWH) per household
 Edison - Max of Average monthly usage (KWH) per household
 PG&E - Max of Average monthly usage (KWH) per household
 SDG&E - Max of Average monthly usage (KWH) per household



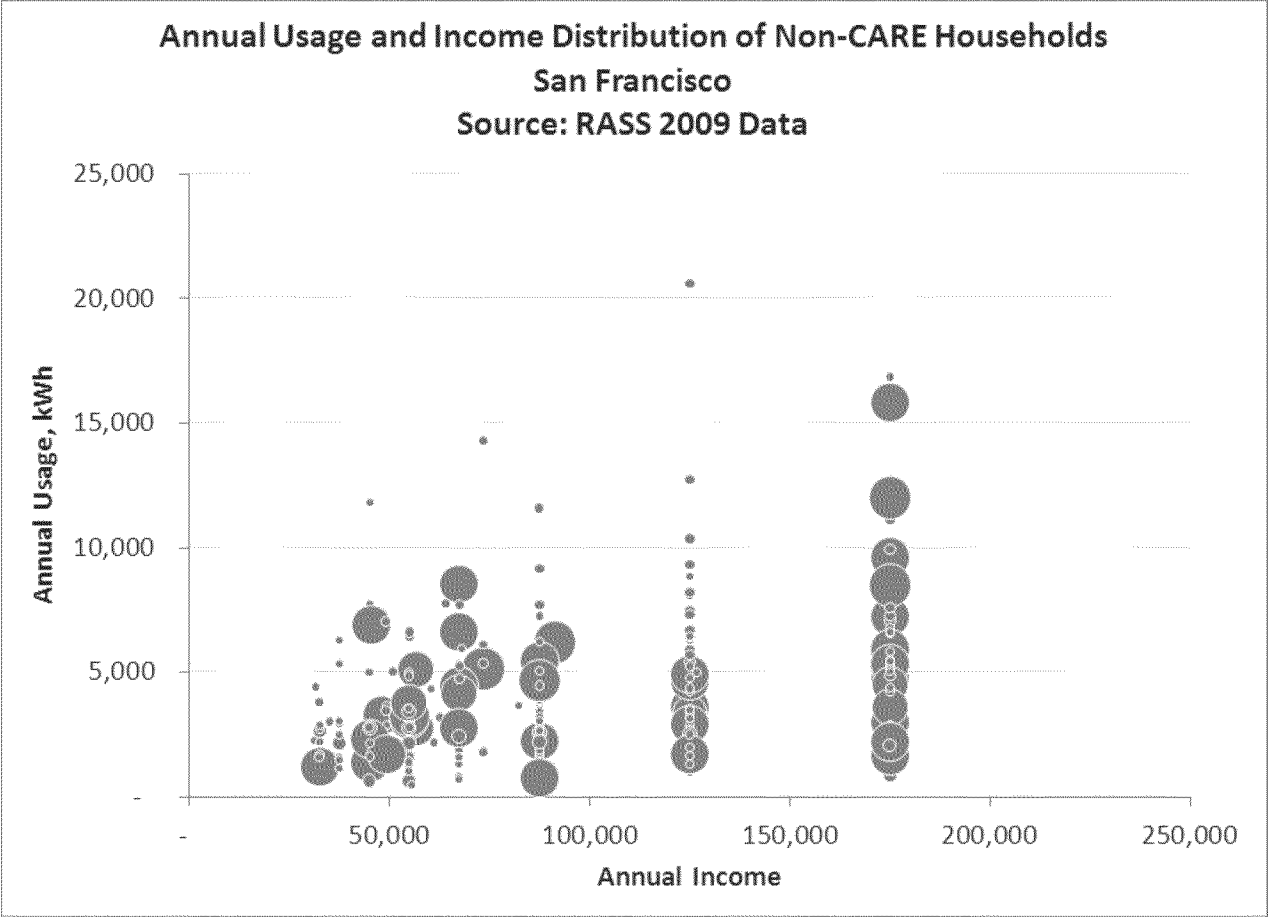
Average Rate Vs. Income



Not all the cities covered in the plot are labeled in the horizontal axis due to space limit.



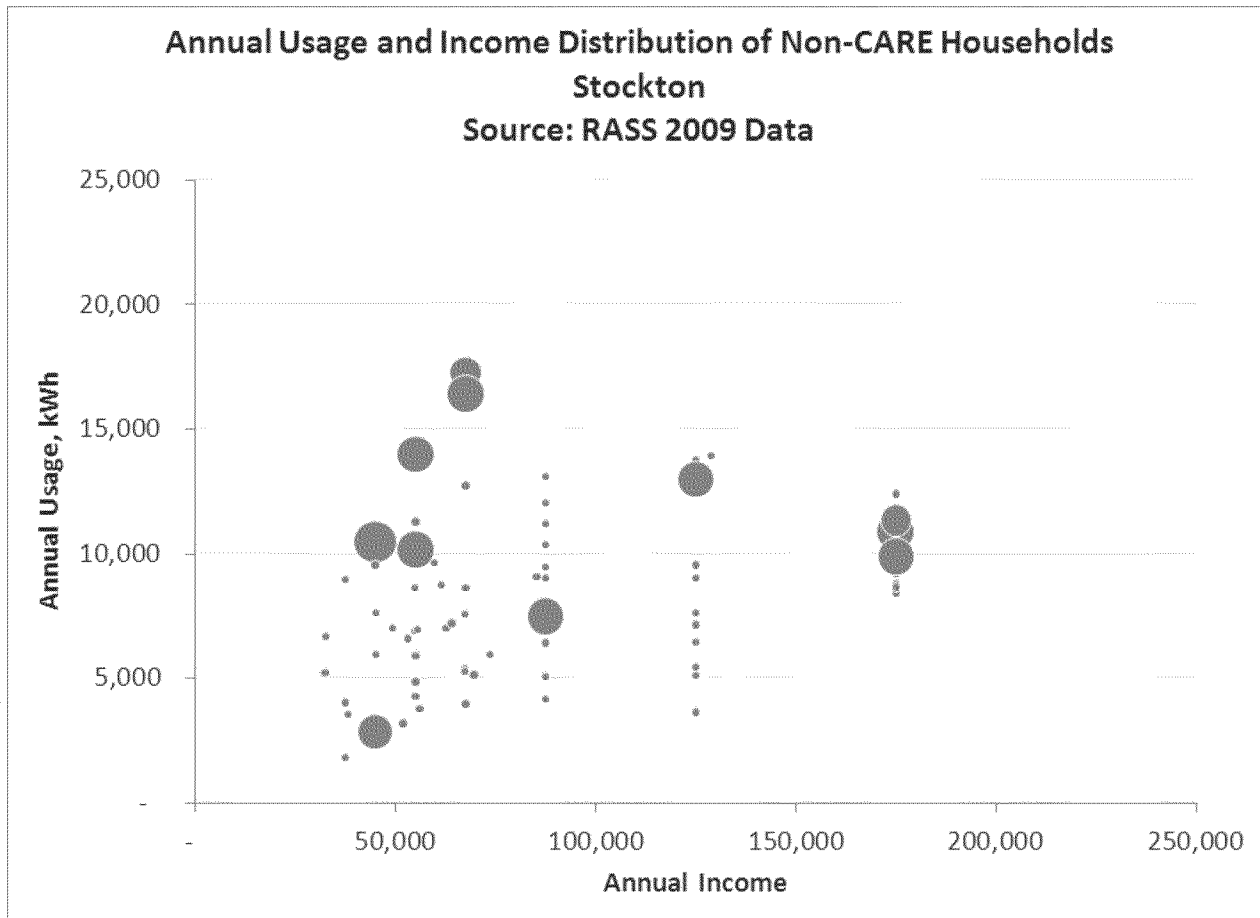
Usage Vs. Income in San Francisco



Larger bubbles represent larger number of households.



Usage Vs. Income in Stockton

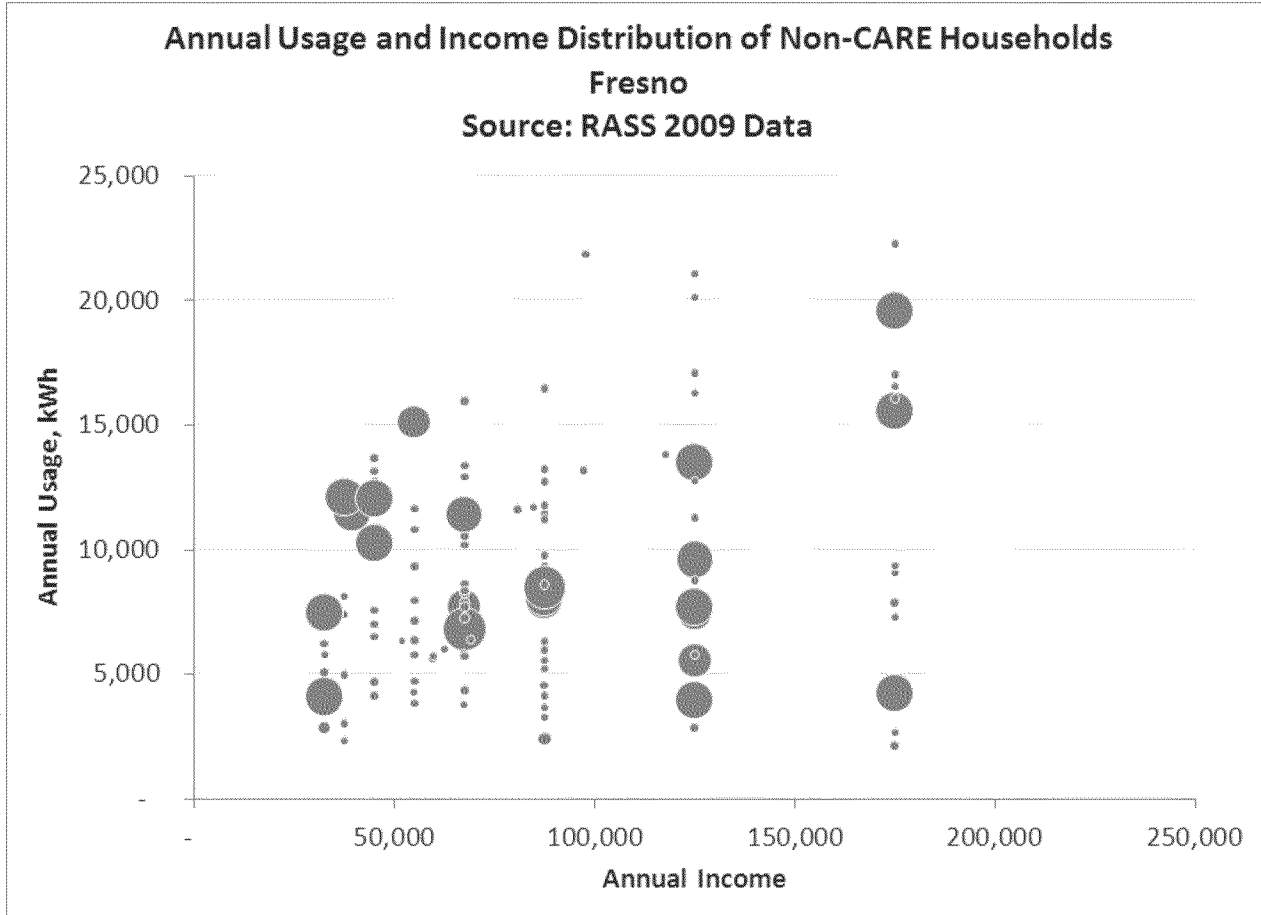


Larger bubbles represent larger number of households.





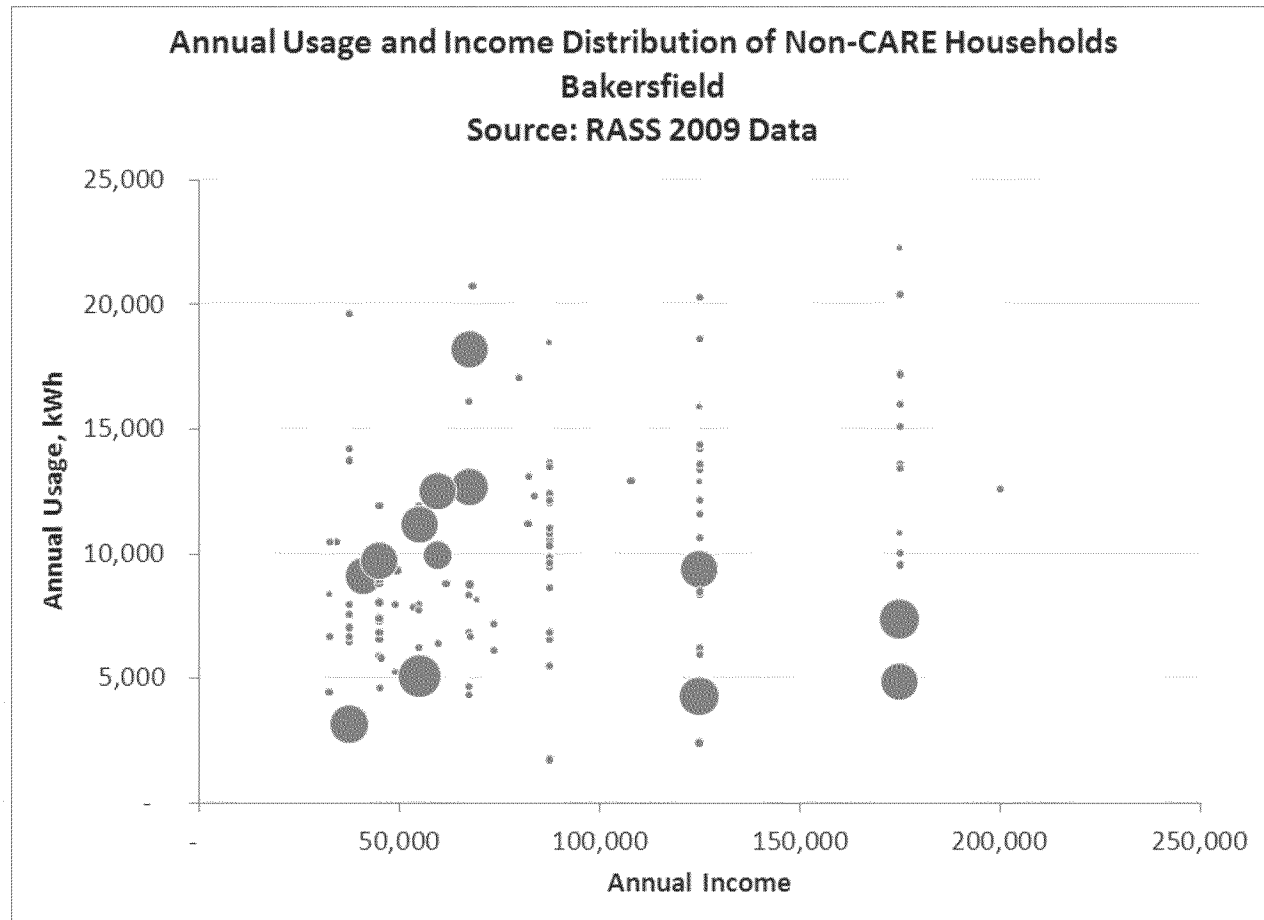
Usage Vs. Income in Fresno



Larger bubbles represent larger number of households.



Usage Vs. Income in Bakersfield



Larger bubbles represent larger number of households.

