



2012 California Energy Consumption – Residential Data



California Public Utilities Commission Policy & Planning Division July 2013

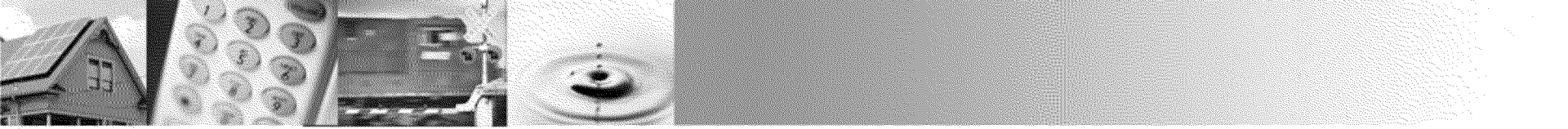




Objective & Key Takeaways

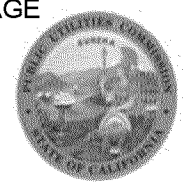
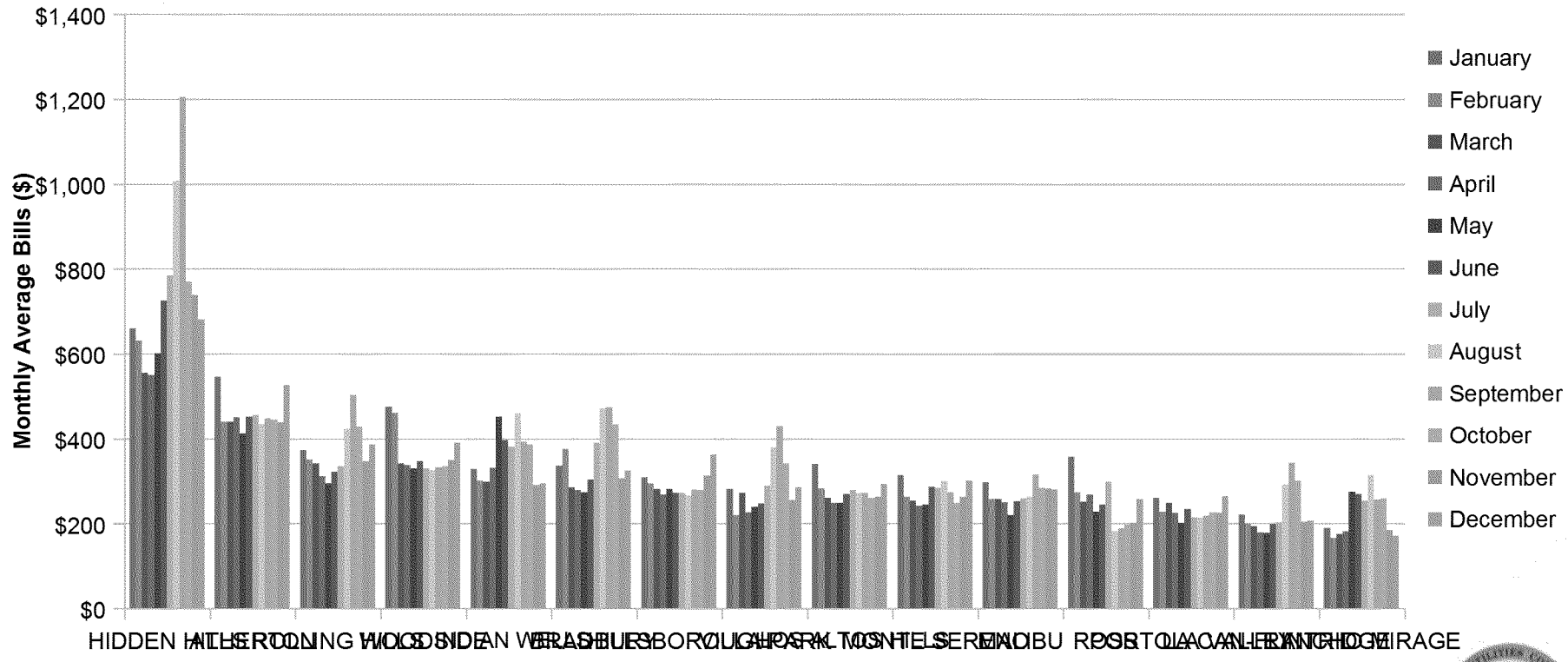
- The objective is to show aggregated energy data by city.
- This data is only Residential Data for calendar year 2012.
- The data shows
 - Highest & Lowest bills by City
 - Highest & Lowest Consumption by City
 - Average monthly rates charged by each Utility
 - Average monthly usage per utility territory
- Need further information?
 - Contact the CPUC's Policy & Planning Division
 - <http://www.cpuc.ca.gov/PUC/aboutus/Divisions/ppd/>





15 Cities that Pay the Most

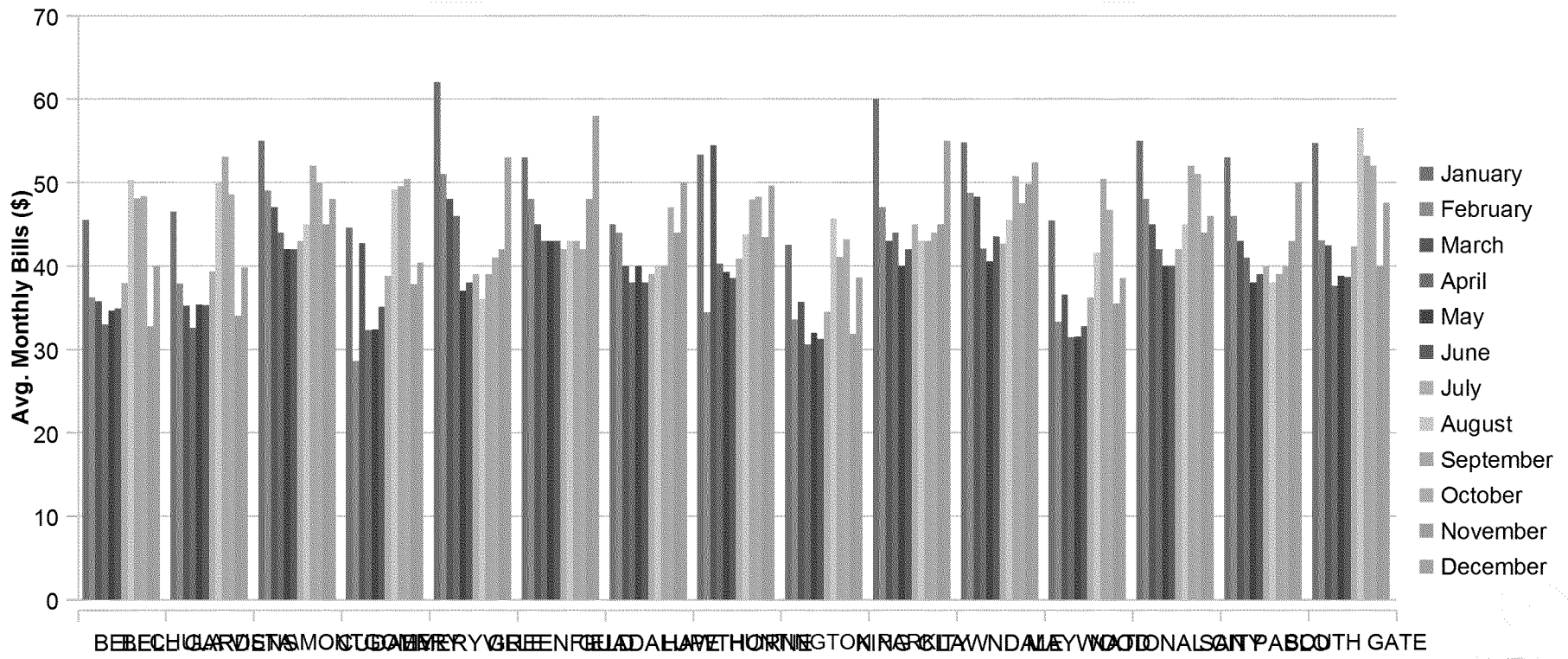
2012 Highest Monthly Residential Bills 15 Cities that Pay the Most





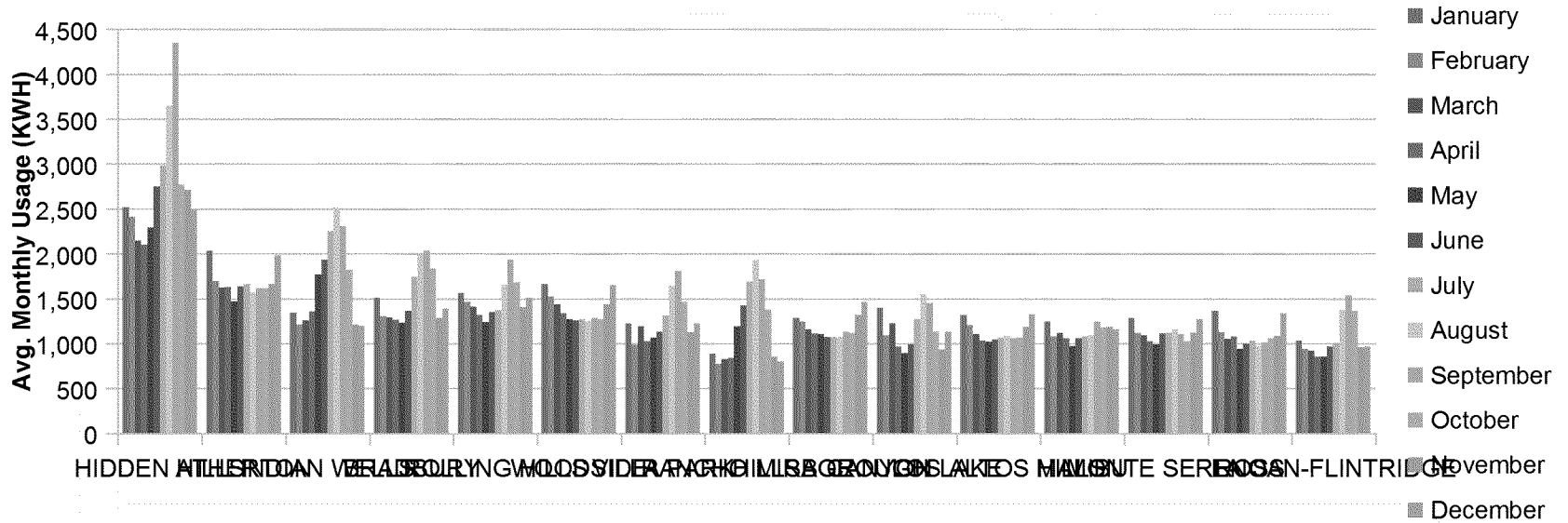
15 Cities that Pay the Least

15 Cities with the Lowest Avg. Bills per month 2012 Residential Data



15 Cities that Consume the Most

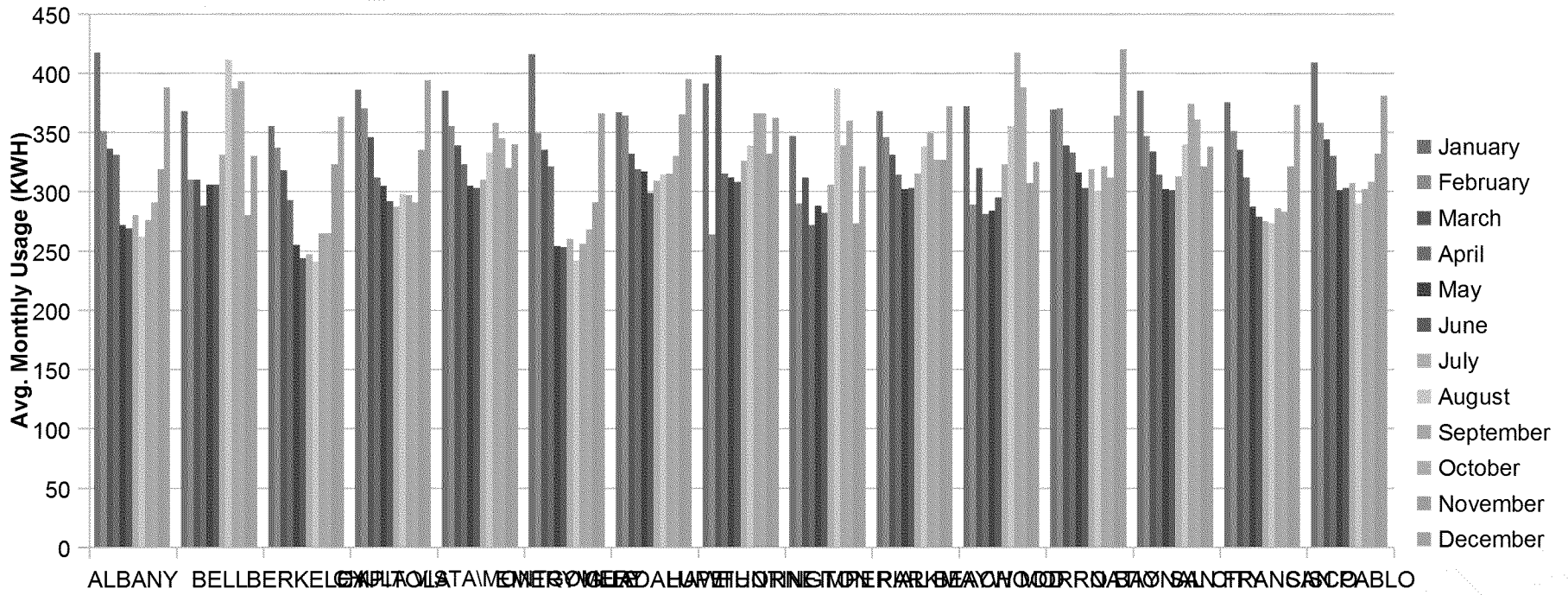
2012 Highest Monthly Average Consumption Top 15 Cities that use the most electricity





15 Cities with the Lowest Consumption

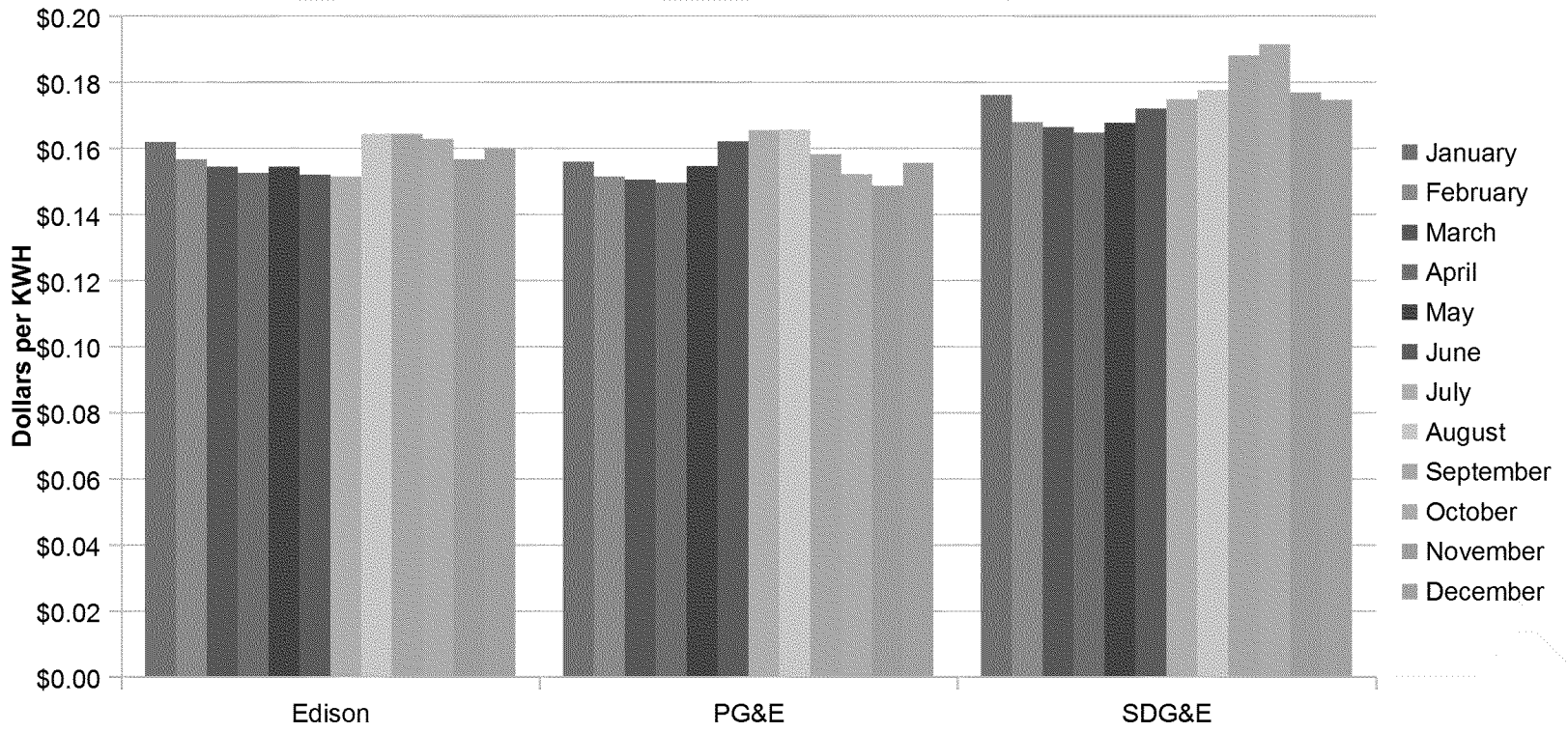
15 Cities with the Lowest Usage 2012 Residential Data





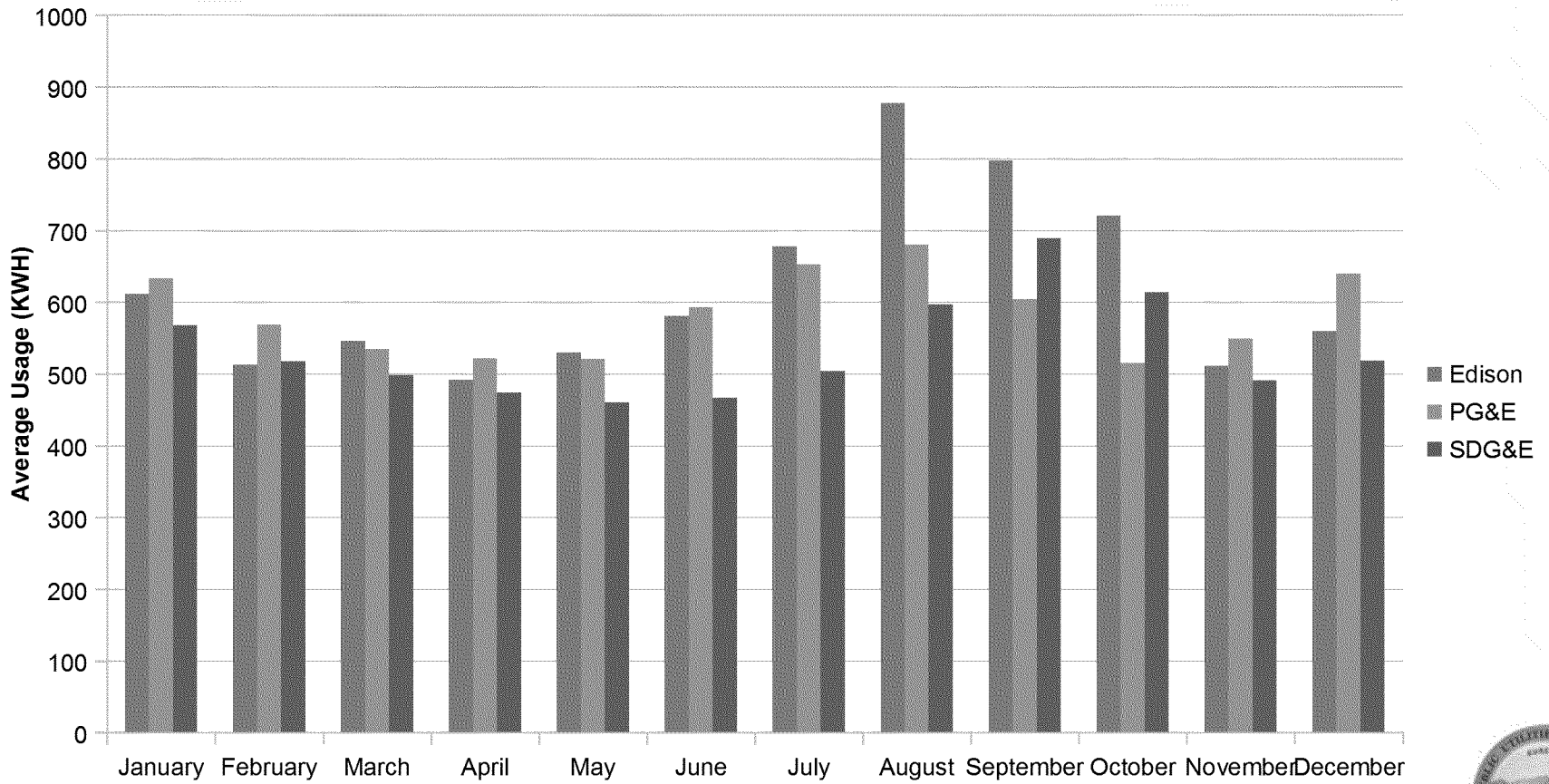
Average Monthly Rate by Utility – Residential Data for 2012

2012 Average Residential Rate



Average Usage – Residential Data for 2012

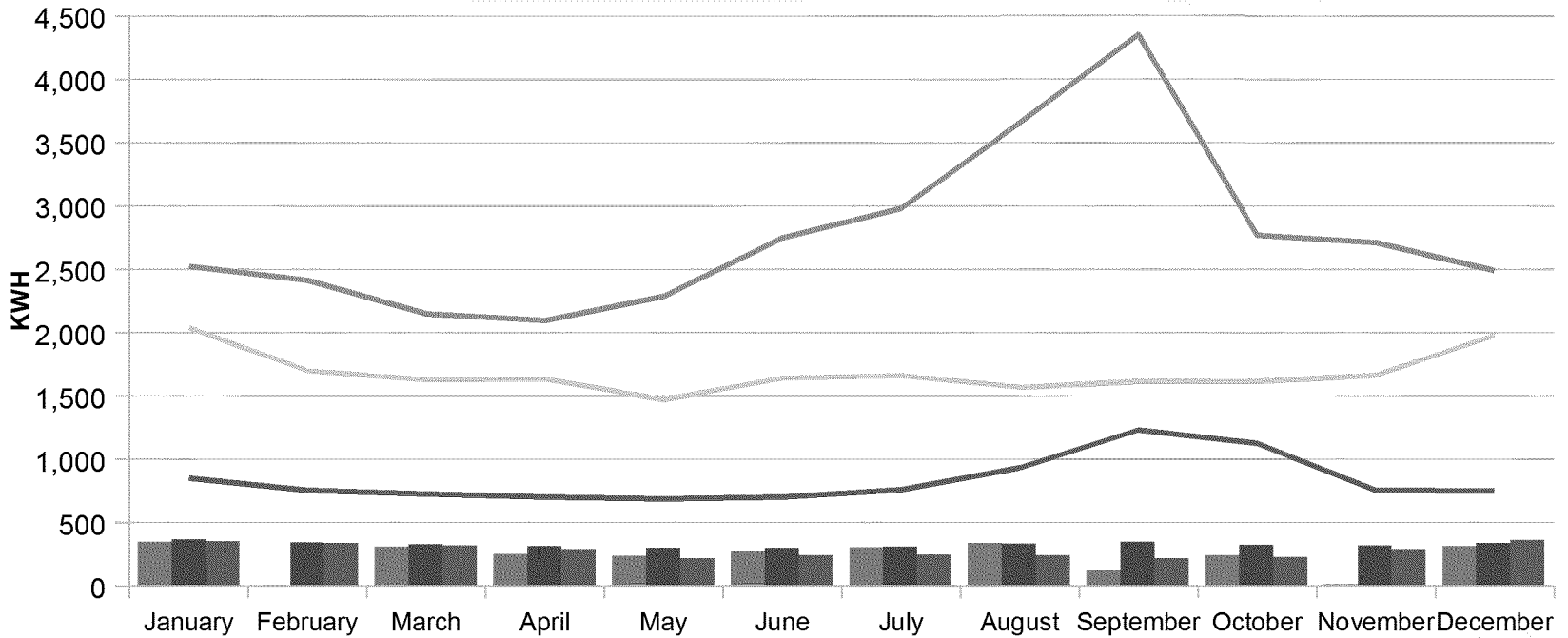
2012 Residential Data - Monthly Avg. Usage by Utility





Minimum & Maximum Usage – Residential Data for 2012

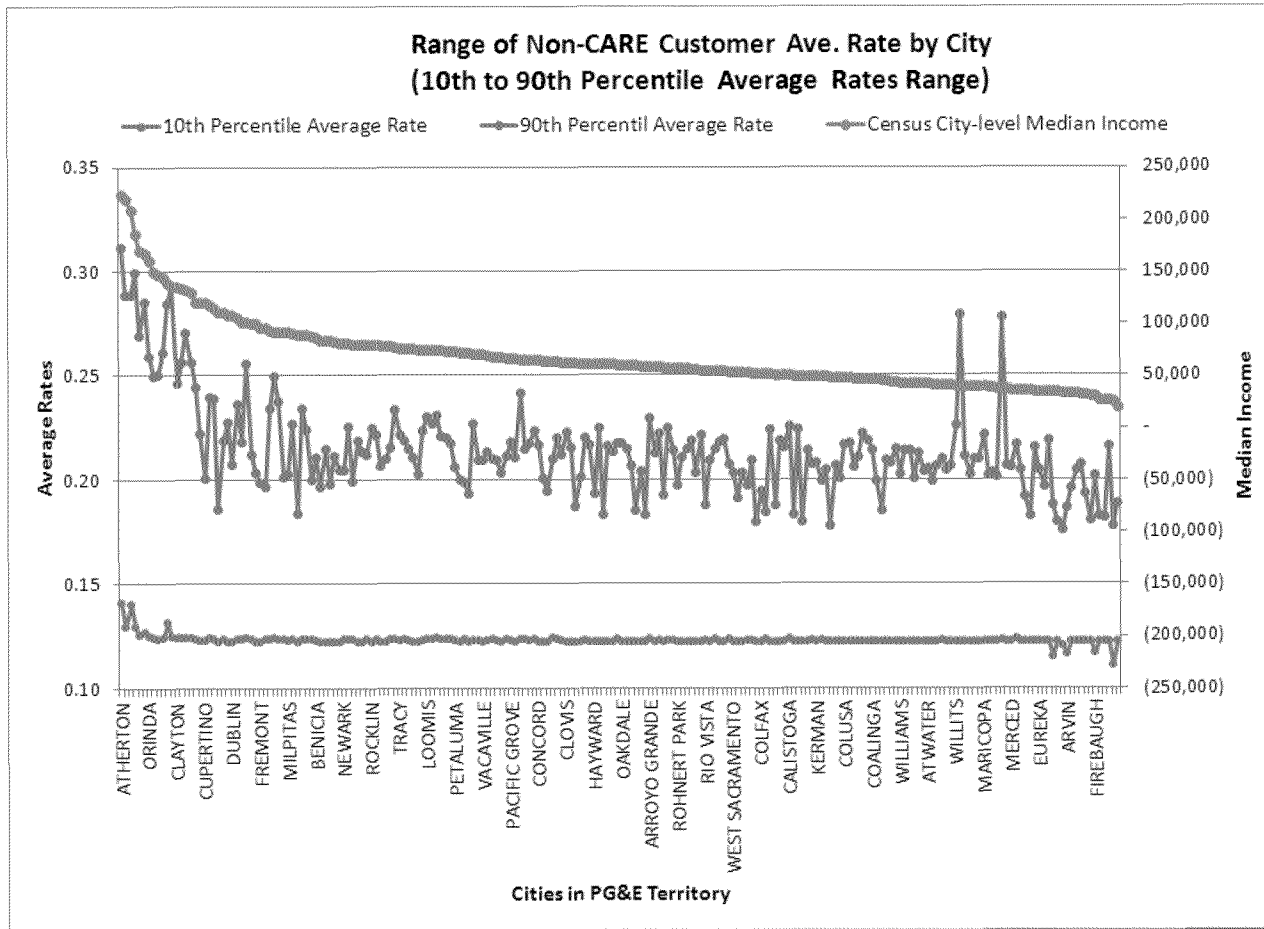
Min & Max Usage by Utility by Month



Edison - Min of Average monthly usage (KWH) per household SDG&E - Min of Average monthly usage (KWH) per household
 PG&E - Min of Average monthly usage (KWH) per household Edison - Max of Average monthly usage (KWH) per household
 PG&E - Max of Average monthly usage (KWH) per household SDG&E - Max of Average monthly usage (KWH) per household



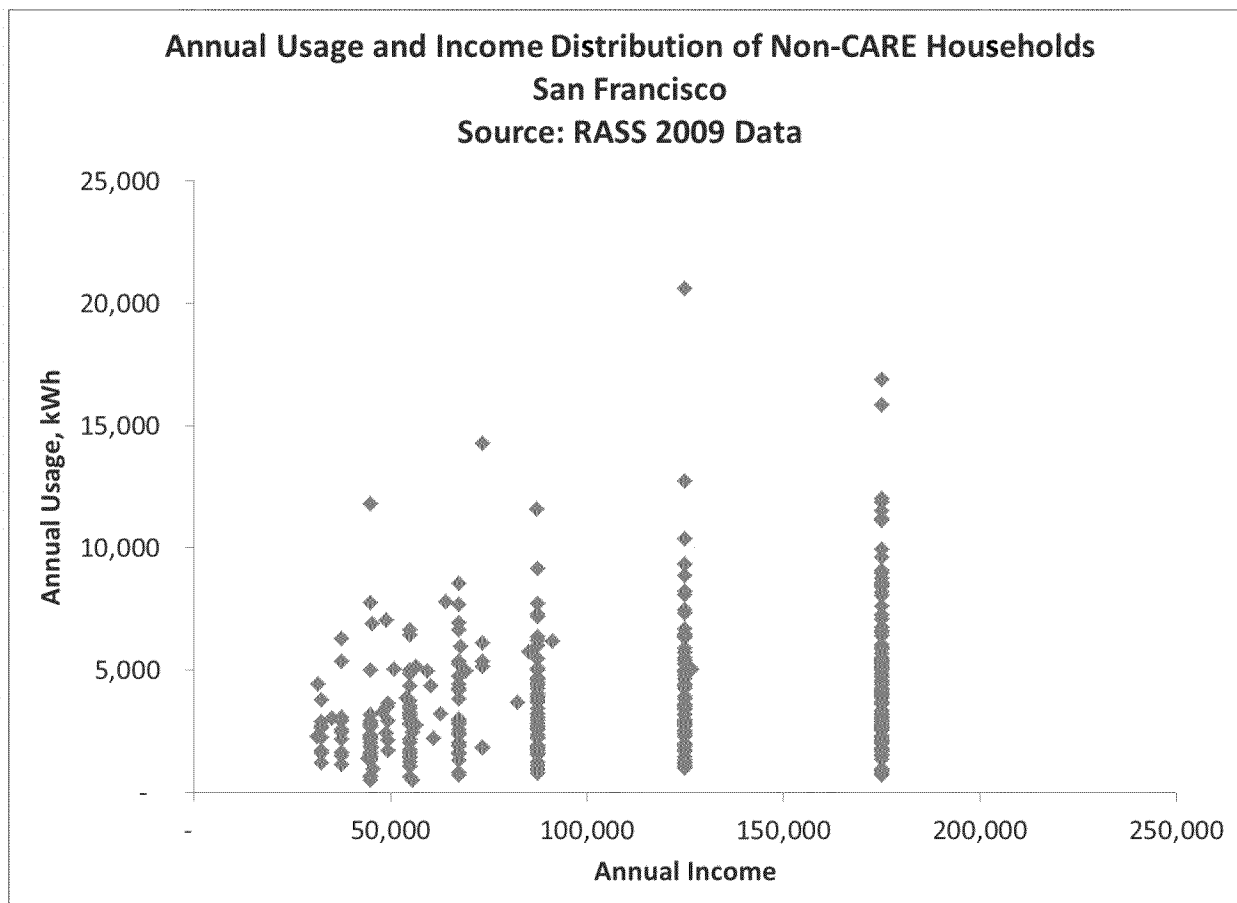
Average Rate Vs. Income



Not all cities covered in the chart are labeled in the horizontal axis due to space limitations.



Usage Vs. Income in San Francisco

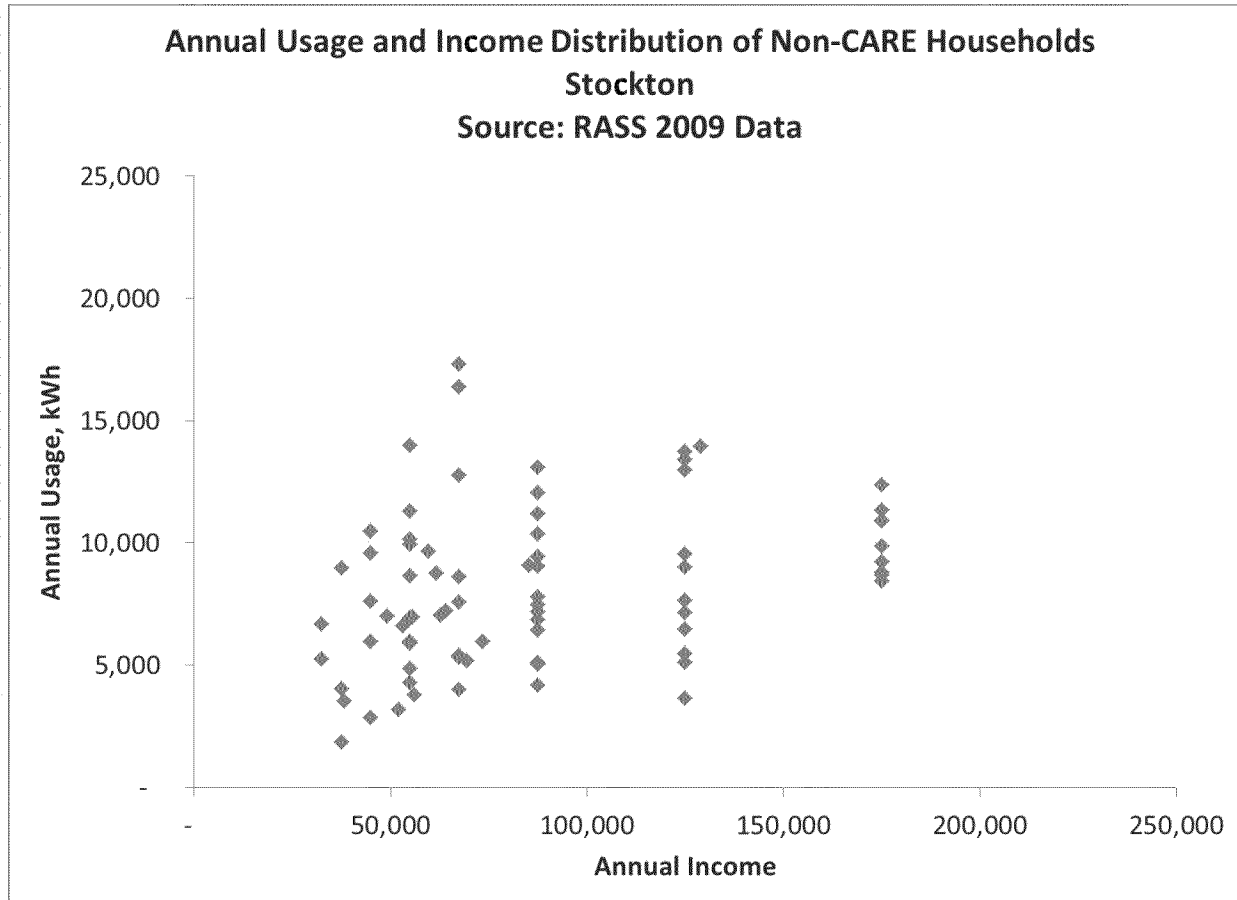


The RASS surveys a representative sample of PG&E's service territory every 4 years

The RASS survey covered approximately 363 households in San Francisco. Each dot represents one of the 363 customers in the survey.

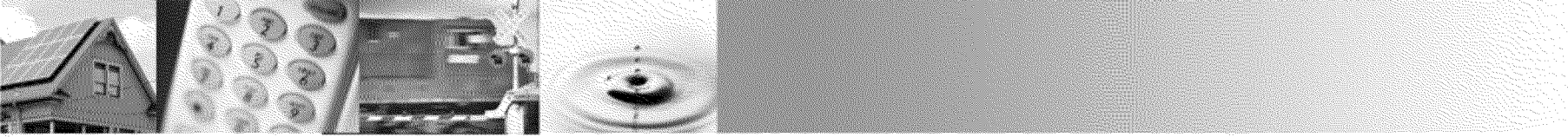


Usage Vs. Income in Stockton

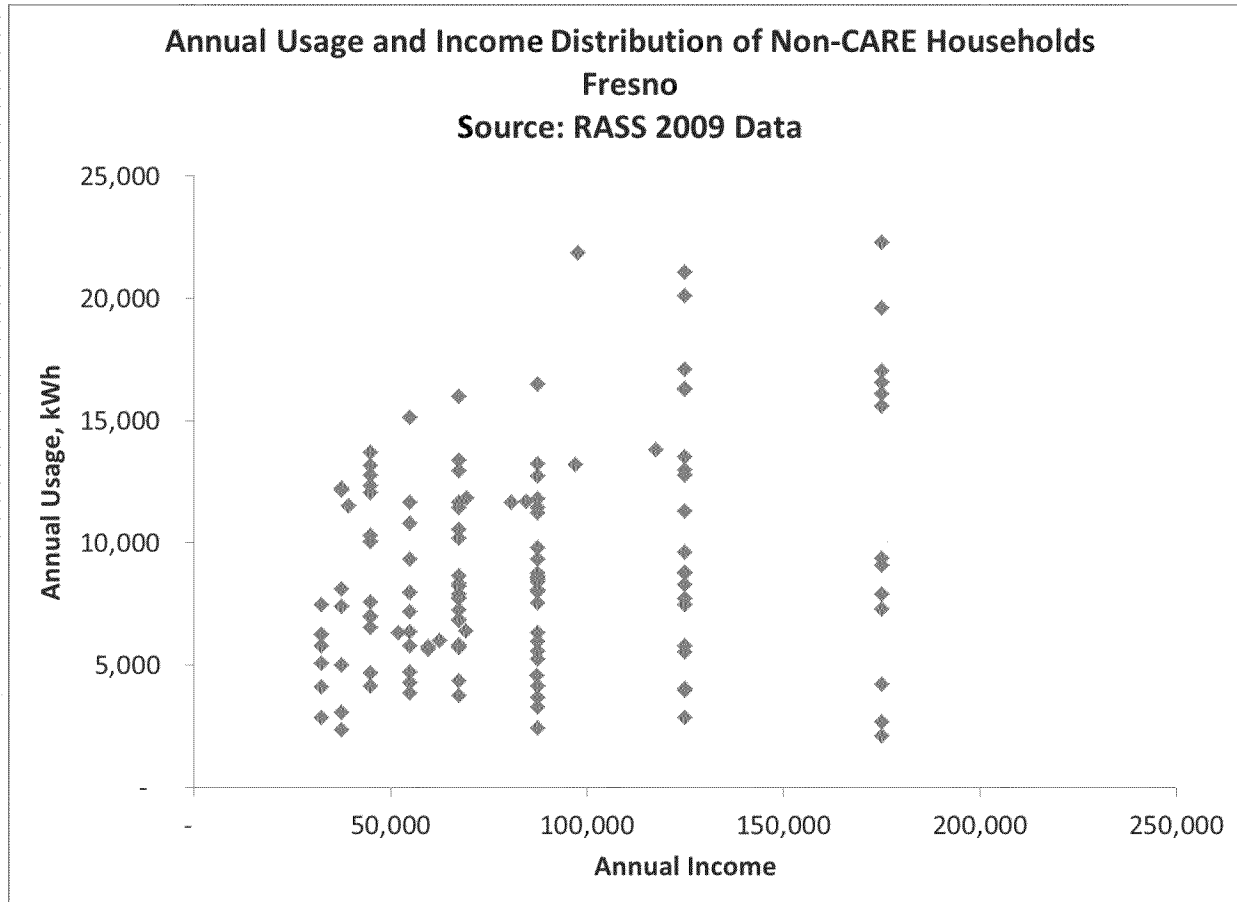


The RASS survey covered approximately 77 households in Stockton. Each dot represents one of the 77 customers in the survey





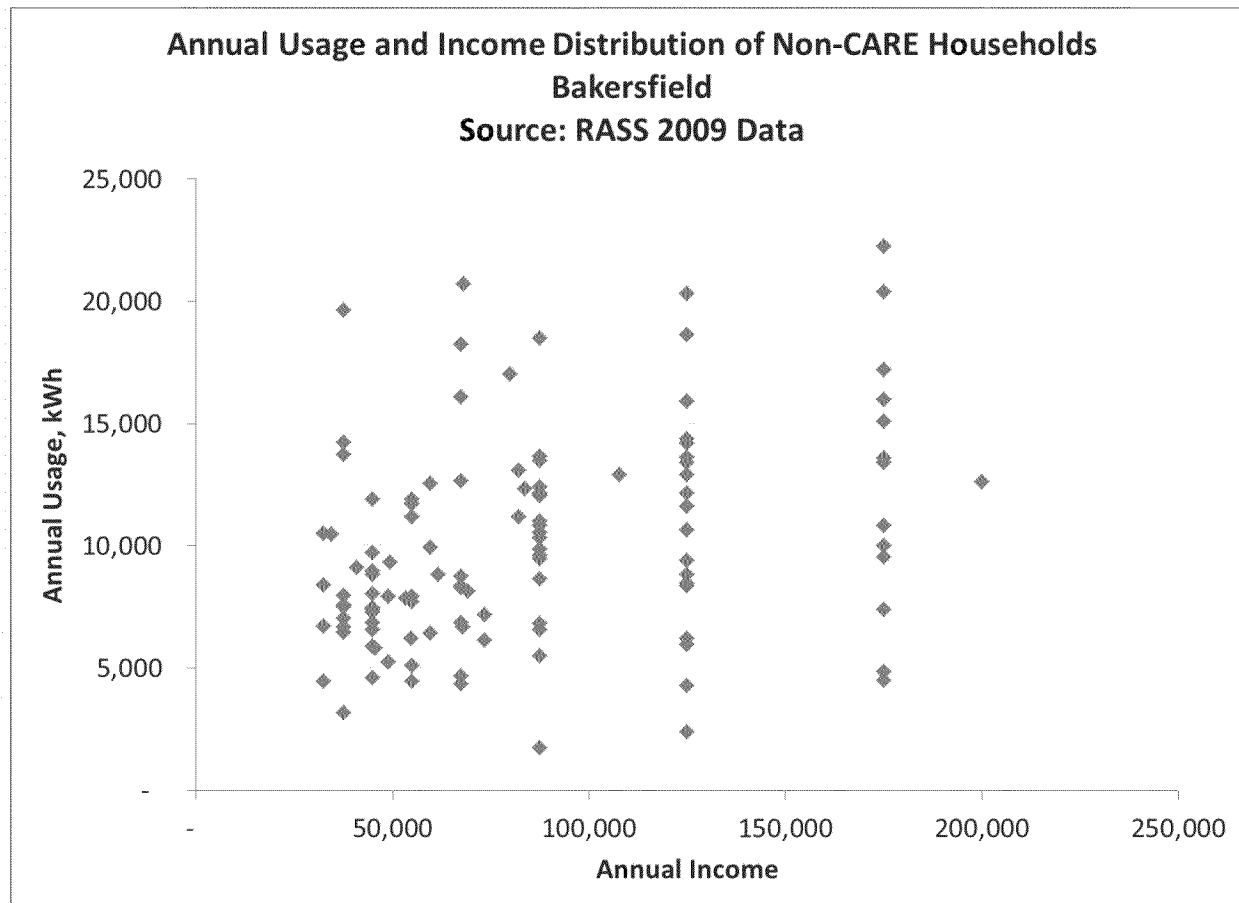
Usage Vs. Income in Fresno



The RASS survey covered approximately 131 households in Fresno. Each dot represents one of the 131 customers in the survey



Usage Vs. Income in Bakersfield



The RASS survey covered approximately 117 households in Bakersfield. Each dot represents one of the 117 customers in the survey.

