



Summary of California's Dynamic Pricing Programs

2012 Ex Post Estimates

	PG&E^A SmartRate™	SCE^B PTR	SDG&E^C PTR
Avg. Opt-In Customer Reduction (kW)	0.280	0.097	0.083
Avg. Opt-In Customer % Reduction	18.0%	4.3%	6.4%
Avg. Opt-In Aggregate Load Impacts (MW)	17.1	14.1	3.7
Avg. Opt-In Customer Count for Season	60,799	146,052	44,160

<u>Reference</u>	<u>IOU</u>	<u>File Source</u>	<u>Pages</u>	<u>Tables</u>
A	PG&E ¹	2012 SmartRate™ Load Impact Protocol Evaluation Report	30-31	4-1; 4-2
B	SCE ²	2012 PTR Load Impact Protocol Evaluation Report	2, 10, 12	4-1; 4-4
C	SDG&E ³	2012 PTR Load Impact Protocol Evaluation Report	3	ES-1

¹ **PG&E NOTE:** In PG&E's 2012 SmartRate™ Load Impact Evaluation, the load impact estimates for SmartRate™ only customers (n=38,667) and customers dually enrolled in SmartRate™ and SmartAC™ (n=22,132) are separated into two tables: Table 4-1 and Table 4-2. SmartAC™ is PG&E's AC cycling program. In the electronic Excel spreadsheet named "2012 SmartRate™ Ex Post Protocol Tables - All Customers" filed with the CPUC under R.07-01-041 on April 1, 2013, the estimates for the both for SmartRate™ only and dually enrolled SmartRate™ and SmartAC™ customers are combined together to produce total SmartRate™ program load impacts. Customers that are dually enrolled in SmartRate™ and SmartAC™ opt-in to having PG&E cycle their AC units when a SmartRate™ event is called. Screenshots of PG&E's ex post load impact protocol tables for this combined customer group are presented on pages 2 and 3 of this presentation.

² **SCE NOTE:** To be consistent with the information presented for PG&E and SDG&E, the SCE PTR load impact estimates presented in the main table include customers from the general SCE population that opted to receive PTR notifications (n=117,942), plus SCE customers that were enrolled in SCE's AC cycling program, Summer Discount Program (SDP) (n=28,111). Like PG&E and SDG&E, the load impact estimates for this combined group is only presented in the electronic Excel spreadsheets filed with the CPUC under R.07-01-041 on April 1, 2013. Screenshots of SCE's ex post load impact protocol tables for this combined customer group are presented on pages 6 and 7 of this presentation.

³ **SDG&E NOTE:** To be consistent with the information presented for PG&E and SCE, the SDG&E PTR load impact estimates presented in the main table include customers from the general SDG&E population that opted to receive PTR notifications (n=41,243), plus SDG&E customers that were enrolled in SDG&E's AC cycling program, Summer Saver (SS) (n=2,917). Like PG&E and SCE, the load impact estimates for this combined group is only presented in the electronic Excel spreadsheets filed with the CPUC under R.07-01-041 on April 1, 2013. Screenshots of SDG&E's ex post load impact protocol tables for this combined customer group are presented on pages 9 and 10 of this presentation.

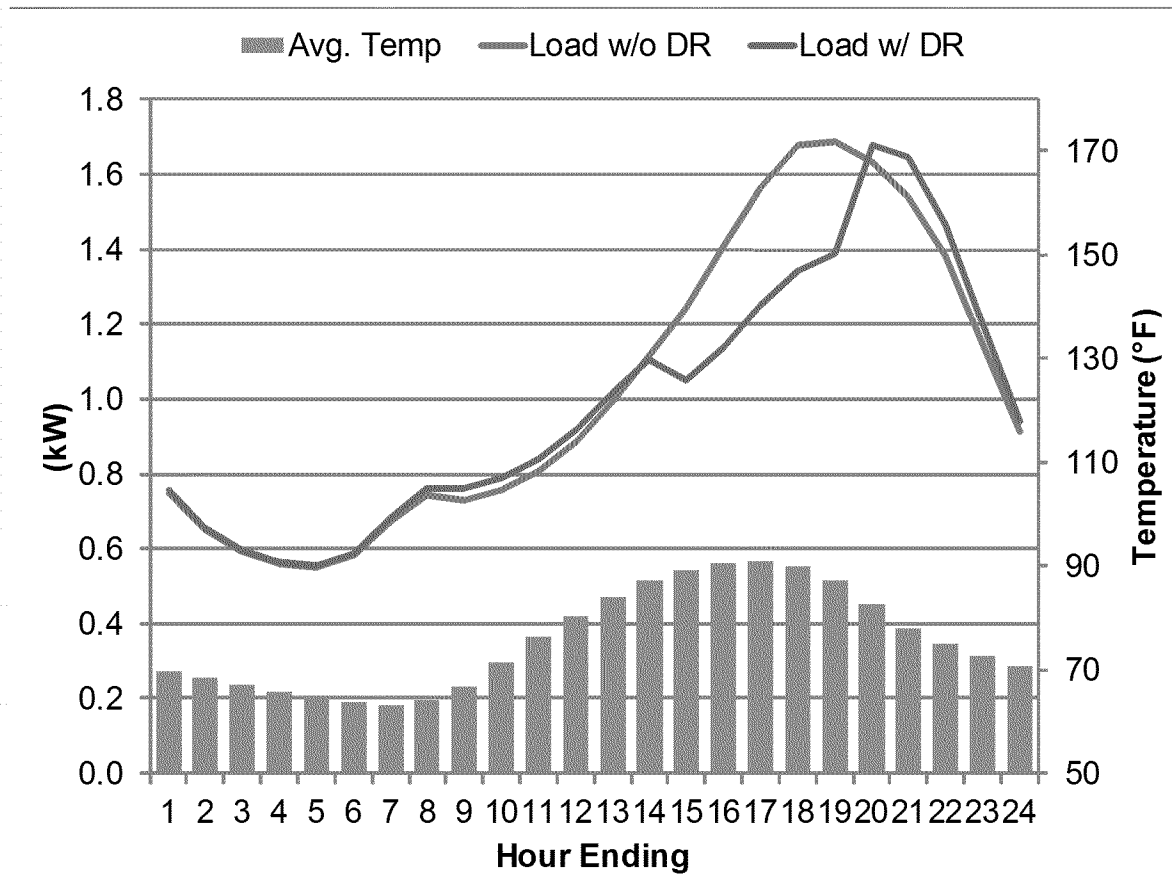


PG&E's SmartRate (Avg. Customer)

2012 Ex Post Estimates - Dually Enrolled SmartRate/SmartAC(TM)

Customers	Both
Local Capacity Area	All
Date	Average Event Day
Result Type	Average Customer
Enrolled Customers	60,799

Event Start	2 PM
Event End	7 PM
Average Temp. for Event Window	90
Load Reduction for Event Window	0.28
% Load Reduction for Event Window	18%



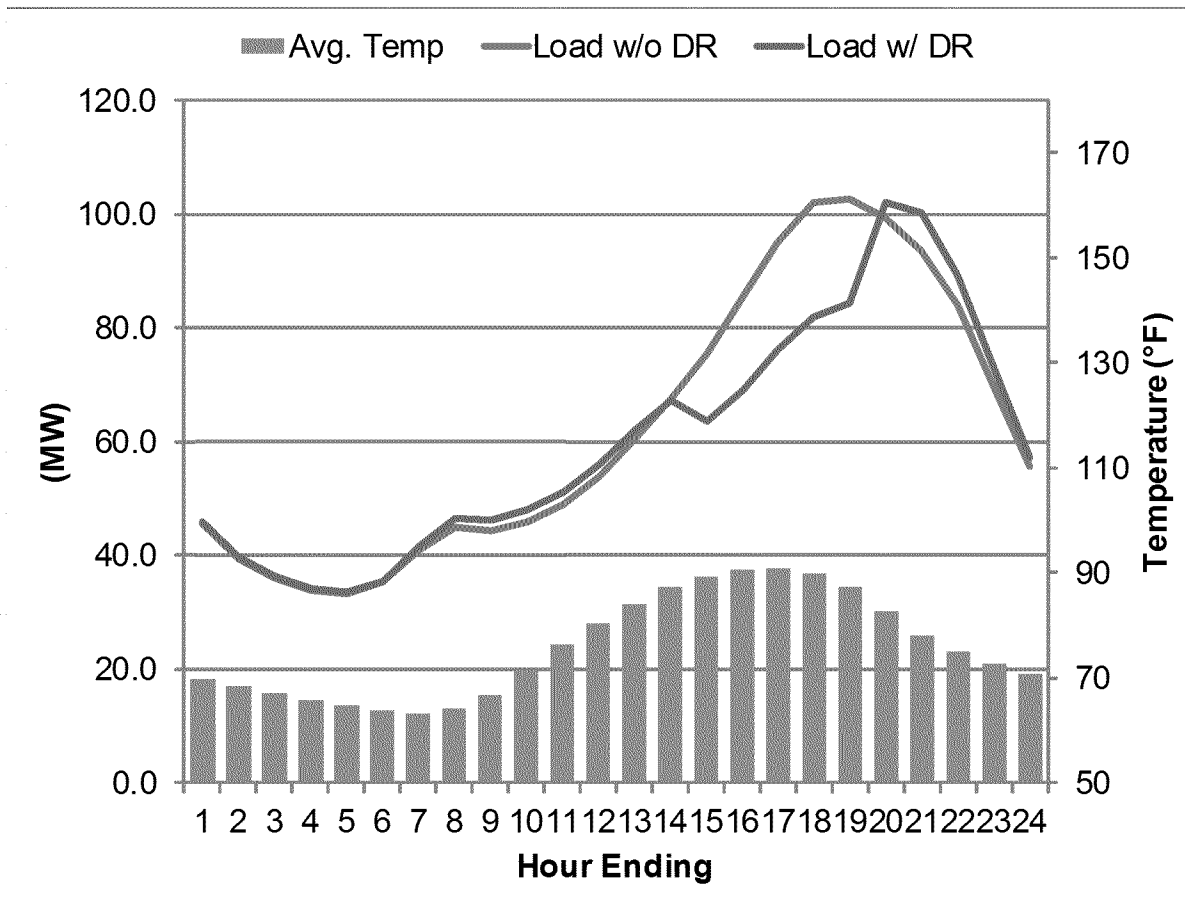


PG&E's SmartRate (Aggregate)

2012 Ex Post Estimates - Dually Enrolled SmartRate/SmartAC(TM)

Customers	Both
Local Capacity Area	All
Date	Average Event Day
Result Type	Aggregate
Enrolled Customers	60,799

Event Start	2 PM
Event End	7 PM
Average Temp. for Event Window	90
Load Reduction for Event Window	17.12
% Load Reduction for Event Window	18%





SCE's PTR Program

2012 Ex Post Estimates - PTR Opt-In Only

Table 4-1: Residential SPD (PTR) Average Hourly Load Impacts – Non-SDP Participants

Event Date	Region	Notice	Number of Accounts	Average Customer		Aggregate		% Load Impact	Average Event Temp.
				Reference Load (kW)	Load Impact (kW)	Reference Load (MW)	Load Impact (MW)		
08/10/2012	Coastal	Opt-in	46,092	1.4	0.100	66.4	4.6	6.9%	86.7
08/16/2012			46,079	1.2	0.089	56.7	4.1	7.2%	82.1
08/29/2012			46,079	1.3	0.017	61.8	0.8	1.3%	81.9
08/31/2012			46,079	1.3	0.059	58.7	2.7	4.6%	81.4
09/07/2012			46,073	1.1	-0.037	52.4	-1.7	-3.2%	82.0
09/10/2012			46,073	1.3	-0.027	59.5	-1.2	-2.1%	82.3
Average	Coastal	Opt-in	46,079	1.3	0.034	59.2	1.5	2.6%	82.7
08/10/2012	Coastal	Default	205,562	1.7	0.085	354.4	17.6	5.0%	86.4
08/16/2012			205,562	1.4	0.080	296.6	16.4	5.5%	81.9
08/29/2012			205,527	1.6	-0.017	325.4	-3.5	-1.1%	82.2
08/31/2012			205,521	1.5	-0.026	300.7	-5.3	-1.8%	81.1
09/07/2012			205,555	1.3	-0.095	270.8	-19.5	-7.2%	81.6
09/10/2012			205,526	1.5	-0.038	316.7	-7.8	-2.5%	82.5
Average	Coastal	Default	205,542	1.5	-0.002	310.8	-0.3	-0.1%	82.6
08/10/2012	Inland	Opt-in	71,897	3.2	0.322	226.6	23.1	10.2%	99.6
08/16/2012			71,880	2.6	0.031	184.2	2.2	1.2%	95.7
08/29/2012			71,874	2.7	0.189	196.3	13.6	6.9%	97.0
08/31/2012			71,865	2.2	0.002	158.2	0.1	0.1%	92.2
09/07/2012			71,823	2.1	0.024	150.7	1.7	1.1%	90.0
09/10/2012			71,837	2.2	0.022	155.5	1.6	1.0%	86.6
Average	Inland	Opt-in	71,863	2.5	0.098	178.6	7.1	4.0%	93.5
08/10/2012	Inland	Default	79,121	3.6	0.355	287.9	28.1	9.7%	101.6
08/16/2012			79,140	3.0	-0.026	234.0	-2.1	-0.9%	97.3
08/29/2012			79,120	3.0	0.043	236.7	3.4	1.5%	96.7
08/31/2012			79,105	2.5	-0.023	195.8	-1.8	-0.9%	92.3
09/07/2012			79,124	2.4	0.058	191.0	4.6	2.4%	89.7
09/10/2012			79,115	2.3	-0.034	185.6	-2.7	-1.4%	83.2
Average	Inland	Default	79,121	2.8	0.062	221.8	4.9	2.2%	93.5
08/10/2012	All	Default	284,683	2.3	0.160	642.3	45.6	7.1%	93.2
08/16/2012			284,701	1.9	0.050	530.6	14.4	2.7%	88.7
08/29/2012			284,647	2.0	0.000	562.1	-0.1	0.0%	88.3
08/31/2012			284,626	1.7	-0.025	496.5	-7.1	-1.4%	85.5
09/07/2012			284,679	1.6	-0.052	461.8	-14.9	-3.2%	85.0
09/10/2012			284,641	1.8	-0.037	502.3	-10.5	-2.1%	82.8
Average	All	Default	284,663	1.9	0.016	532.6	4.6	0.9%	87.2
08/10/2012	All	Opt-in	117,990	2.5	0.235	292.9	27.8	9.5%	96.7
08/16/2012			117,958	2.0	0.053	240.9	6.3	2.6%	92.5
08/29/2012			117,953	2.2	0.122	258.1	14.4	5.6%	93.4
08/31/2012			117,943	1.8	0.024	216.9	2.8	1.3%	89.3
09/07/2012			117,896	1.7	0.000	203.1	0.0	0.0%	87.9
09/10/2012			117,909	1.8	0.003	215.1	0.4	0.2%	85.4
Average	All	Opt-in	117,942	2.0	0.073	237.8	8.6	3.6%	90.9
08/10/2012	All	All	402,673	2.3	0.182	935.2	73.4	7.8%	94.3
08/16/2012			402,660	1.9	0.051	771.5	20.7	2.7%	89.9
08/29/2012			402,600	2.0	0.036	820.2	14.3	1.7%	89.9
08/31/2012			402,570	1.8	-0.011	713.3	-4.3	-0.6%	86.7
09/07/2012			402,574	1.7	-0.037	664.9	-14.8	-2.2%	85.9
09/10/2012			402,551	1.8	-0.025	717.4	-10.1	-1.4%	83.6
Average	All	All	402,604	1.9	0.033	770.4	13.2	1.7%	88.4



SCE's PTR Program

2012 Ex Post Estimates - PTR + SDP Opt-In

Table 4-4: Residential PTR Average Hourly Load Impacts – SDP Participants

Event Date	Region	Notice	Number of Accounts	Average Customer		Aggregate		% Load Impact	Average Event Temp.
				Reference Load (kW)	Load Impact (kW)	Reference Load (MW)	Load Impact (MW)		
08/10/2012	All	Opt-in	28,138	4.1	0.421	114.3	11.9	10.4%	96.0
08/16/2012			28,120	3.3	0.174	93.6	4.9	5.2%	91.7
08/29/2012			28,106	3.3	0.243	91.4	6.8	7.5%	91.8
08/31/2012			28,100	2.9	0.126	81.6	3.5	4.3%	88.1
09/07/2012			28,100	2.6	0.004	73.6	0.1	0.2%	86.9
09/10/2012			28,099	2.7	0.201	77.1	5.7	7.3%	83.9
Average			All	Opt-in	28,111	3.2	0.195	88.6	5.5
08/10/2012	All	Default	51,648	4.3	0.206	223.4	10.6	4.8%	96.0
08/16/2012			51,627	3.7	-0.022	188.9	-1.1	-0.6%	91.7
08/29/2012			51,609	3.5	0.015	180.4	0.8	0.4%	91.8
08/31/2012			51,606	3.2	0.015	164.4	0.8	0.5%	88.1
09/07/2012			51,597	2.8	-0.163	144.8	-8.4	-5.8%	86.9
09/10/2012			51,597	3.0	0.118	156.0	6.1	3.9%	83.9
Average			All	Default	51,614	3.4	0.028	176.3	1.5
08/10/2012	All	No Notice	193,156	4.0	0.079	767.3	15.3	2.0%	96.0
08/16/2012			193,881	3.3	0.001	643.9	0.2	0.0%	91.7
08/29/2012			195,453	3.2	-0.035	635.0	-6.8	-1.1%	91.8
08/31/2012			195,654	2.8	-0.041	556.1	-8.0	-1.4%	88.1
09/07/2012			195,850	2.6	-0.184	514.0	-36.1	-7.0%	86.9
09/10/2012			195,882	2.8	0.022	547.1	4.4	0.8%	83.9
Average			All	No Notice	194,979	3.1	-0.027	610.6	-5.2
08/10/2012	All	All	272,942	4.0	0.138	1,104.9	37.8	3.4%	96.0
08/16/2012			273,628	3.4	0.015	926.3	4.0	0.4%	91.7
08/29/2012			275,168	3.3	0.003	906.9	0.8	0.1%	91.8
08/31/2012			275,360	2.9	-0.013	802.1	-3.7	-0.5%	88.1
09/07/2012			275,547	2.7	-0.161	732.5	-44.4	-6.1%	86.9
09/10/2012			275,578	2.8	0.058	780.2	16.1	2.1%	83.9
Average			All	All	274,704	3.2	0.006	875.5	1.8
08/10/2012	All	Opt-in & Default Only	79,786	4.2	0.282	337.7	22.5	6.7%	96.0
08/16/2012			79,747	3.5	0.047	282.5	3.8	1.3%	91.7
08/29/2012			79,715	3.4	0.095	271.9	7.6	2.8%	91.8
08/31/2012			79,706	3.1	0.054	246.0	4.3	1.7%	88.1
09/07/2012			79,697	2.7	-0.104	218.5	-8.3	-3.8%	86.9
09/10/2012			79,696	2.9	0.147	233.1	11.7	5.0%	83.9
Average			All	Notified	79,725	3.3	0.087	264.9	6.9



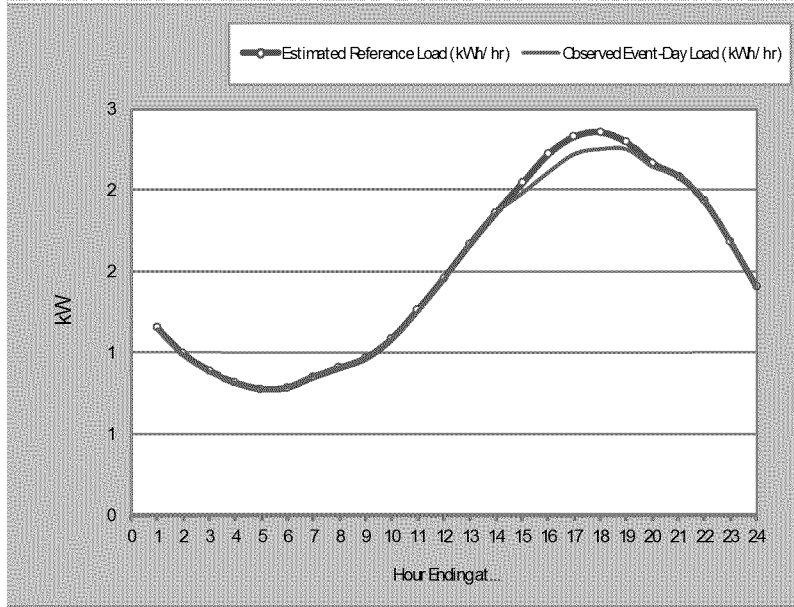
SCE's PTR Program (Avg. Customer)

2012 Ex Post Estimates - PTR + SDP Opt-In

Number of Service Accounts: 146,052

Utility:	Southern California Edison	
DR Program:	Peak-time Rebate (PTR)	Avg. Customer Load Impacts
Type of Results:	Average per Called Customer 0.096511425	
Group:	All	
Notice type:	Opt-in	Avg. Agg. %Load Impacts
Event Date:	Typical Event Day	4.32%
Hour Event Began:	Hour Ending 15	
Hour Event Ended:	Hour Ending 18	

Hour Ending	Estimated Reference Load (kWh/hr)	Observed Event-Day Load (kWh/hr)	Estimated Load Impact (kWh/hr)	Weighted Average Temperature (°F)	Uncertainty Adjusted Impact (kWh/ hr) - Percentiles				
					10th%ile	30th%ile	50th%ile	70th%ile	90th%ile
1	1.151	1.143	0.008	75	-0.038	-0.011	0.008	0.027	0.054
2	0.991	0.986	0.005	75	-0.034	-0.011	0.005	0.021	0.045
3	0.888	0.883	0.004	74	-0.033	-0.011	0.004	0.020	0.042
4	0.819	0.818	0.001	73	-0.036	-0.014	0.001	0.017	0.039
5	0.780	0.779	0.001	73	-0.038	-0.015	0.001	0.017	0.040
6	0.787	0.789	-0.002	72	-0.043	-0.019	-0.002	0.015	0.039
7	0.853	0.860	-0.007	72	-0.051	-0.025	-0.007	0.012	0.038
8	0.908	0.912	-0.004	74	-0.047	-0.021	-0.004	0.014	0.039
9	0.967	0.971	-0.004	78	-0.043	-0.020	-0.004	0.012	0.035
10	1.086	1.086	0.000	82	-0.046	-0.019	0.000	0.018	0.045
11	1.264	1.254	0.010	86	-0.042	-0.011	0.010	0.031	0.062
12	1.458	1.453	0.005	88	-0.051	-0.018	0.005	0.029	0.062
13	1.668	1.669	-0.001	90	-0.067	-0.028	-0.001	0.026	0.065
14	1.860	1.859	0.001	91	-0.069	-0.028	0.001	0.030	0.071
15	2.040	1.978	0.061	91	-0.011	0.032	0.061	0.091	0.134
16	2.218	2.107	0.110	92	0.041	0.082	0.110	0.139	0.180
17	2.327	2.219	0.108	91	0.037	0.079	0.108	0.137	0.179
18	2.356	2.249	0.106	89	0.027	0.074	0.106	0.139	0.186
19	2.293	2.247	0.045	86	-0.028	0.015	0.045	0.075	0.119
20	2.158	2.139	0.019	82	-0.046	-0.008	0.019	0.046	0.084
21	2.079	2.083	-0.004	80	-0.060	-0.027	-0.004	0.020	0.053
22	1.930	1.936	-0.006	78	-0.064	-0.030	-0.006	0.017	0.052
23	1.679	1.690	-0.011	77	-0.076	-0.038	-0.011	0.015	0.053
24	1.402	1.407	-0.005	76	-0.069	-0.031	-0.005	0.021	0.059
	Reference Energy Use (kWh)	Observed Event-Day Energy Use (kWh)	Change in Energy Use (kWh)	Cooling Degree Hours (Base 75° F)	Uncertainty Adjusted Impact (kWh/ hr) - Percentiles				
Daily	36	36	0	157.9	10th	30th	50th	70th	90th
					n/a	n/a	n/a	n/a	n/a





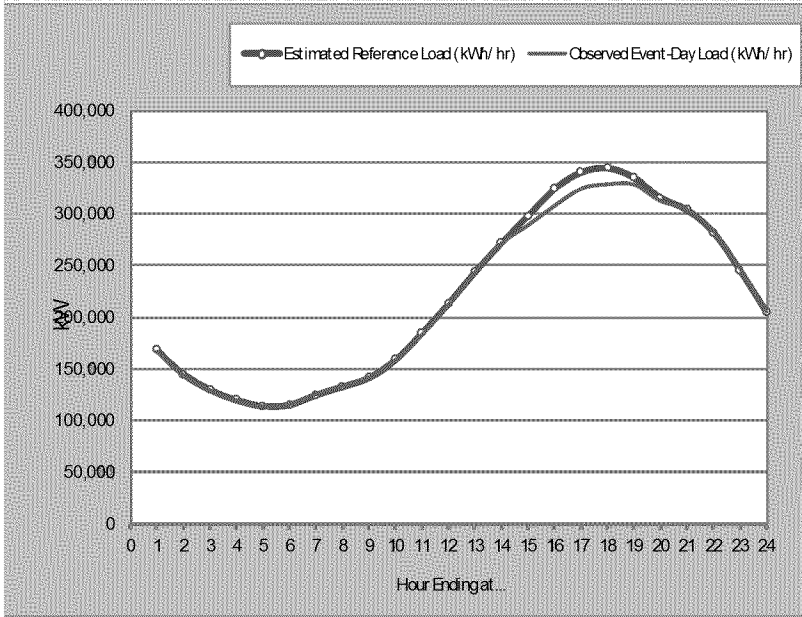
SCE's PTR Program (Aggregate)

2012 Ex Post Estimates - PTR + SDP Opt-In

Number of Service Accounts: 146,052

Utility:	Southern California Edison	
DR Program:	Peak-time Rebate (PTR)	Avg. Agg. Load Impacts
Type of Results:	Aggregate Impact	14097.05825
Group:	All	
Notice type:	Opt-in	Avg. Agg. % Load Impacts
Event Date:	Typical Event Day	4.32%
Hour Event Began:	Hour Ending 15	
Hour Event Ended:	Hour Ending 18	

Hour Ending	Estimated Reference Load (kWh/hr)	Observed Event-Day Load (kWh/hr)	Estimated Load Impact (kWh/hr)	Weighted Average Temperature (°F)	Uncertainty Adjusted Impact (kWh/ hr) - Percentiles				
					10th%ile	30th%ile	50th%ile	70th%ile	90th%ile
1	168,051	166,886	1,165	75	-5,536	-1,577	1,165	3,907	7,865
2	144,771	144,006	765	75	-5,008	-1,597	765	3,128	6,539
3	129,628	129,000	628	74	-4,875	-1,624	628	2,880	6,131
4	119,649	119,452	197	73	-5,304	-2,054	197	2,448	5,698
5	113,863	113,750	112	73	-5,614	-2,231	112	2,455	5,838
6	115,003	115,299	-296	72	-6,258	-2,736	-296	2,143	5,665
7	124,599	125,563	-964	72	-7,466	-3,625	-964	1,696	5,538
8	132,661	133,209	-548	74	-6,794	-3,103	-548	2,008	5,698
9	141,199	141,777	-578	78	-6,269	-2,906	-578	1,751	5,113
10	158,600	158,669	-69	82	-6,784	-2,817	-69	2,678	6,645
11	184,555	183,113	1,442	86	-6,173	-1,674	1,442	4,558	9,056
12	212,981	212,189	792	88	-7,463	-2,585	792	4,170	9,047
13	243,586	243,726	-141	90	-9,817	-4,100	-141	3,819	9,535
14	271,726	271,562	164	91	-10,100	-4,036	164	4,364	10,428
15	297,896	288,913	8,982	91	-1,640	4,636	8,982	13,329	19,605
16	323,920	307,799	16,121	92	5,921	11,947	16,121	20,294	26,320
17	339,896	324,156	15,740	91	5,372	11,498	15,740	19,983	26,109
18	344,055	328,510	15,545	89	3,966	10,807	15,545	20,283	27,124
19	334,834	328,212	6,622	86	-4,073	2,246	6,622	10,998	17,317
20	315,192	312,413	2,779	82	-6,718	-1,107	2,779	6,665	12,275
21	303,686	304,205	-518	80	-8,826	-3,918	-518	2,881	7,789
22	281,832	282,740	-908	78	-9,347	-4,361	-908	2,545	7,531
23	245,226	246,897	-1,670	77	-11,147	-5,548	-1,670	2,208	7,807
24	204,718	205,446	-728	76	-10,077	-4,553	-728	3,098	8,621
Daily	Reference Energy Use (kWh)	Observed Event-Day Energy Use (kWh)	Change in Energy Use (kWh)	Cooling Degree Hours (Base 75° F)	Uncertainty Adjusted Impact (kWh/ hr) - Percentiles				
	5,252,126	5,187,492	64,635	157.9	n/a	n/a	n/a	n/a	n/a





SDG&E's PTR Program

2012 Ex Post Estimates - PTR Opt-In Alert and SS Opt-In Alert

Table ES-1: Estimated PTR Usage Impacts by Major Customer Group

Customer Group	Climate Zone	Number of Accounts	Average Customer		Aggregate		% Load Impact	Average Event Temp.
			Reference Load (kW)	Load Impact (kW)	Reference Load (MW)	Load Impact (MW)		
All SDEC	Coastal	3,106	0.70	0.017	2.2	0.05	2.4%	82.5
Opt-in Alert		23,689	1.06	0.062	25.2	1.47	5.8%	80.6
IHD/PCT		359	1.88	0.076	0.7	0.03	4.0%	81.6
MyAccount		318,849	0.93	-0.010	296.7	-3.34	-1.1%	80.9
Non-MyAccount		343,859	0.91	-0.019	311.8	-6.52	-2.1%	80.8
Total/Average		689,861	0.92	-0.012	636.6	-8.31	-1.3%	80.9
All SDEC	Inland	1,525	1.05	0.018	1.6	0.03	1.8%	85.5
Opt-in Alert		17,554	1.58	0.067	27.8	1.18	4.2%	86.8
IHD/PCT		295	2.55	0.039	0.8	0.01	1.5%	86.6
MyAccount		234,138	1.52	-0.046	354.9	-10.74	-3.0%	86.4
Non-MyAccount		257,300	1.33	-0.040	343.3	-10.29	-3.0%	86.3
Total/Average		510,812	1.43	-0.039	728.3	-19.81	-2.7%	86.4
All SDEC	All	4,631	0.81	0.018	3.8	0.08	2.2%	83.8
Opt-in Alert		41,243	1.29	0.064	53.0	2.65	5.0%	83.9
IHD/PCT		654	2.18	0.059	1.4	0.04	2.7%	84.3
MyAccount		552,987	1.18	-0.025	651.6	-14.08	-2.2%	83.9
Non-MyAccount		601,158	1.09	-0.028	655.2	-16.80	-2.6%	83.7
<i>SS Opt-in Alert</i>		2,917	1.69	0.392	4.9	1.14	23.2%	84.7
Total/Average		1,203,590	1.14	-0.022	1,369.9	-26.98	-2.0%	83.8



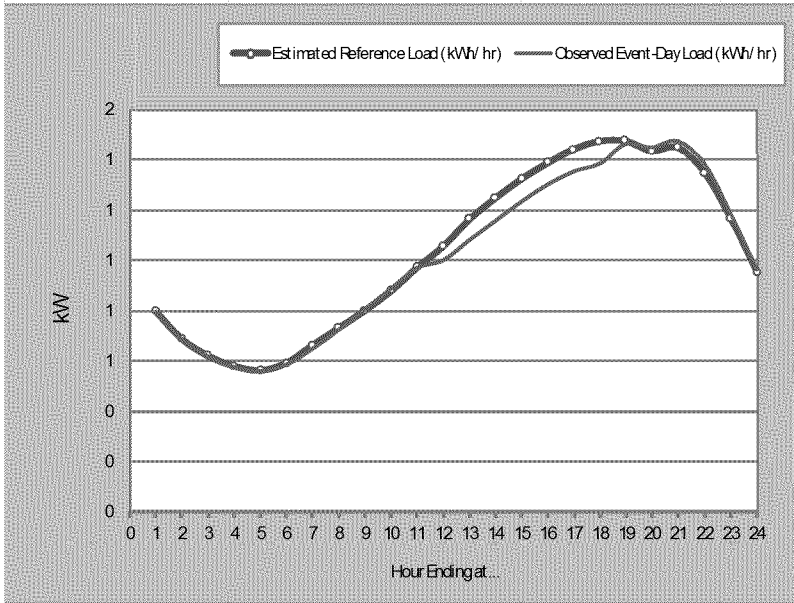
SDG&E's PTR Program (Avg. Customer)⁹

2012 Ex Post Estimates - PTR Opt-In Alert and SS Opt-In Alert

Number of Service Accounts: 44,160

Utility:	San Diego Gas & Electric	Avg. Customer Load Impacts
DR Program:	Peak-time Rebate (PTR)	0.083423829
Type of Results:	Average per Called Customer	
Customer Group:	Summer Saver + Opt-in Alert	Avg. Agg. % Load Impacts
Subgroup:	All	6.43%
Event Date:	Typical Event Day	
Hour Event Began:	Hour Ending 12	
Hour Event Ended:	Hour Ending 18	

Hour Ending	Estimated Reference Load (kWh/hr)	Observed Event-Day Load (kWh/hr)	Estimated Load Impact (kWh/hr)	Weighted Average Temperature (°F)	Uncertainty Adjusted Impact (kWh/ hr) - Percentiles				
					10th%ile	30th%ile	50th%ile	70th%ile	90th%ile
1	0.796	0.796	0.000	69	-0.005	-0.002	0.000	0.002	0.006
2	0.687	0.685	0.001	69	-0.003	-0.001	0.001	0.003	0.006
3	0.619	0.617	0.002	68	-0.002	0.000	0.002	0.004	0.006
4	0.578	0.574	0.006	68	0.003	0.005	0.006	0.008	0.010
5	0.562	0.559	0.002	67	-0.001	0.001	0.002	0.004	0.006
6	0.591	0.585	0.006	68	0.003	0.005	0.006	0.008	0.010
7	0.663	0.648	0.014	72	0.010	0.013	0.014	0.016	0.018
8	0.730	0.724	0.006	78	0.002	0.005	0.006	0.008	0.011
9	0.800	0.805	-0.006	81	-0.011	-0.008	-0.006	-0.003	0.000
10	0.877	0.887	-0.012	84	-0.019	-0.015	-0.012	-0.010	-0.006
11	0.971	0.969	0.002	86	-0.006	-0.001	0.002	0.005	0.009
12	1.055	1.000	0.055	87	0.048	0.052	0.055	0.058	0.063
13	1.162	1.080	0.084	87	0.076	0.081	0.084	0.088	0.093
14	1.247	1.157	0.090	87	0.081	0.087	0.090	0.094	0.099
15	1.323	1.233	0.090	86	0.080	0.086	0.090	0.093	0.099
16	1.387	1.301	0.085	85	0.076	0.082	0.085	0.089	0.095
17	1.441	1.353	0.088	83	0.078	0.084	0.088	0.091	0.097
18	1.473	1.384	0.091	79	0.082	0.088	0.091	0.095	0.100
19	1.474	1.462	0.012	75	0.002	0.008	0.012	0.016	0.021
20	1.434	1.448	-0.016	73	-0.025	-0.020	-0.016	-0.013	-0.008
21	1.447	1.474	-0.027	72	-0.035	-0.030	-0.027	-0.024	-0.019
22	1.346	1.382	-0.034	71	-0.041	-0.037	-0.034	-0.031	-0.026
23	1.164	1.184	-0.022	70	-0.028	-0.024	-0.022	-0.019	-0.015
24	0.953	0.964	-0.011	69	-0.016	-0.013	-0.011	-0.009	-0.005
Daily	Reference Energy Use (kWh)	Observed Event-Day Energy Use (kWh)	Change in Energy Use (kWh)	Cooling Degree Hours (Base 75° F)	Uncertainty Adjusted Impact (kWh/ hr) - Percentiles				
	24.8	24.3	0.5	96.8	10th	30th	50th	70th	90th
					n/a	n/a	n/a	n/a	n/a



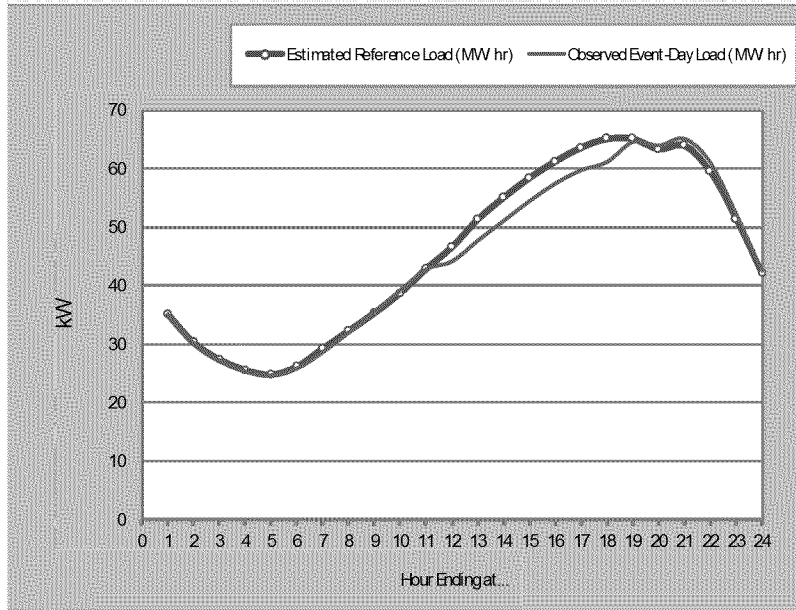


SDG&E's PTR Program (Aggregate)

2012 Ex Post Estimates - PTR Opt-In Alert and SS Opt-In Alert

Number of Service Accounts: 44,160

Utility:	San Diego Gas & Electric	Avg. Agg. Load Impacts
DR Program:	Peak-time Rebate (PTR)	3.684
Type of Results:	Aggregate Impact	
Customer Group:	Summer Saver + Opt-in Alert	Avg. Agg. %Load Impacts
Subgroup:	All	6.43%
Event Date:	Typical Event Day	
Hour Event Began:	Hour Ending 12	
Hour Event Ended:	Hour Ending 18	



Hour Ending	Estimated Reference Load (MW/hr)	Observed Event-Day Load (MW/hr)	Estimated Load Impact (MW/hr)	Weighted Average Temperature (°F)	Uncertainty Adjusted Impact (MW hr) - Percentiles				
					10th%ile	30th%ile	50th%ile	70th%ile	90th%ile
1	35.15	35.14	0.01	69	-0.22	-0.08	0.01	0.11	0.24
2	30.32	30.26	0.06	69	-0.15	-0.03	0.06	0.14	0.26
3	27.34	27.26	0.08	68	-0.10	0.01	0.08	0.16	0.27
4	25.54	25.37	0.28	68	0.11	0.21	0.28	0.34	0.44
5	24.81	24.70	0.11	67	-0.05	0.04	0.11	0.18	0.27
6	26.11	25.83	0.28	68	0.12	0.21	0.28	0.35	0.45
7	29.26	28.63	0.63	72	0.45	0.56	0.63	0.70	0.81
8	32.24	31.96	0.28	78	0.09	0.21	0.28	0.36	0.47
9	35.32	35.57	-0.24	81	-0.49	-0.35	-0.24	-0.14	0.00
10	38.74	39.18	-0.54	84	-0.82	-0.66	-0.54	-0.43	-0.26
11	42.87	42.80	0.08	86	-0.25	-0.06	0.08	0.21	0.40
12	46.60	44.16	2.44	87	2.10	2.30	2.44	2.58	2.77
13	51.33	47.71	3.72	87	3.35	3.57	3.72	3.87	4.09
14	55.07	51.08	3.99	87	3.59	3.83	3.99	4.15	4.39
15	58.43	54.47	3.96	86	3.55	3.79	3.96	4.13	4.37
16	61.24	57.47	3.77	85	3.36	3.61	3.77	3.94	4.18
17	63.63	59.76	3.87	83	3.47	3.71	3.87	4.04	4.28
18	65.07	61.14	4.03	79	3.64	3.87	4.03	4.19	4.43
19	65.09	64.58	0.52	75	0.10	0.35	0.52	0.69	0.93
20	63.34	63.96	-0.72	73	-1.10	-0.87	-0.72	-0.56	-0.34
21	63.91	65.10	-1.19	72	-1.55	-1.33	-1.19	-1.04	-0.83
22	59.45	61.04	-1.50	71	-1.83	-1.63	-1.50	-1.36	-1.17
23	51.41	52.27	-0.96	70	-1.24	-1.07	-0.96	-0.84	-0.67
24	42.07	42.55	-0.49	69	-0.73	-0.58	-0.49	-0.39	-0.24
	Reference Energy Use (MMWh)	Observed Event-Day Energy Use (MMWh)	Change in Energy Use (MMWh)	Cooling Degree Hours (Base 75° F)	Uncertainty Adjusted Impact (MW hr) - Percentiles				
Daily	1,094	1,072	22	96.8	n/a	n/a	n/a	n/a	n/a