

**Emergency Preparedness and Response**  
**Update with CPUC**  
**December 13, 2013**



# Agenda

Overview of Emergency Preparedness and Response (EP&R)

Employee Preparedness

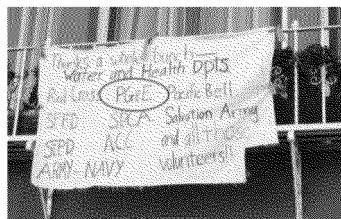
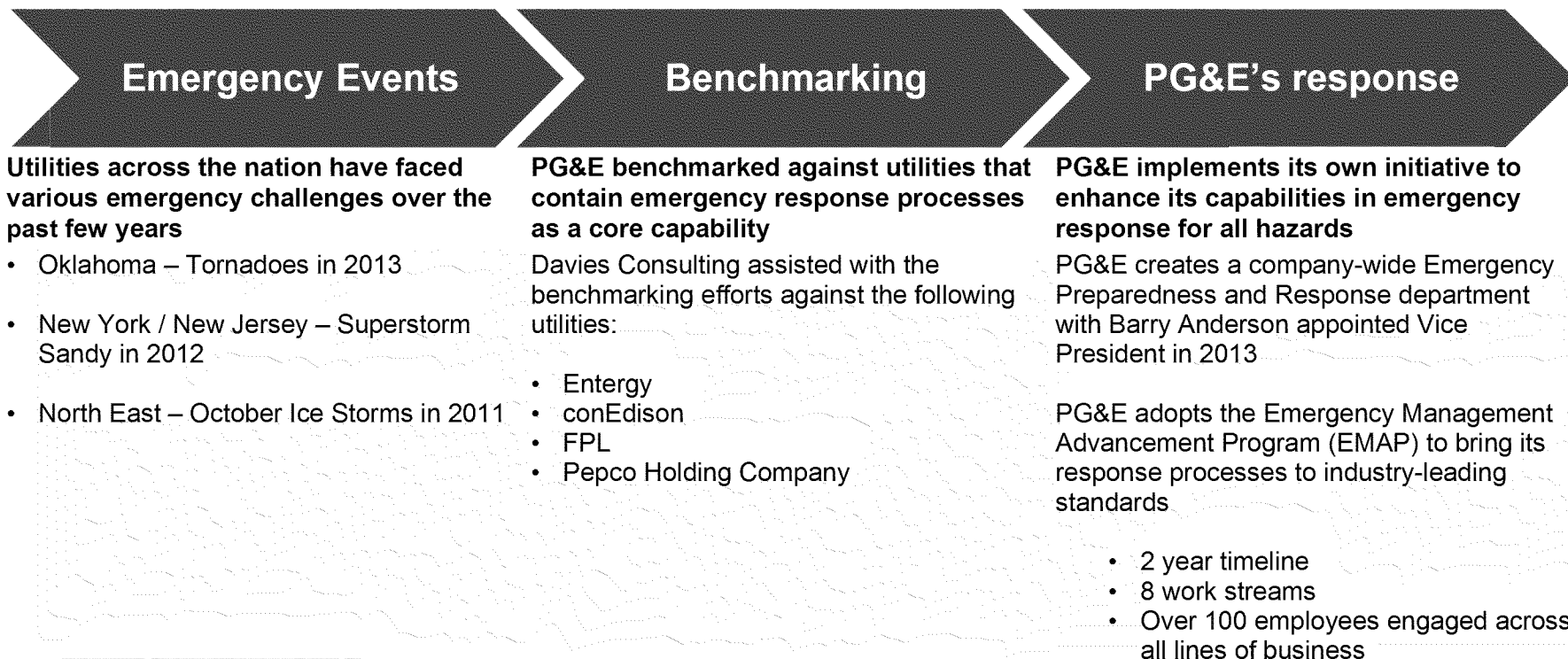
Functional Drills

Catastrophic Event Communications with the CPUC



# Overview of Emergency Preparedness and Response (EP&R)

Spurred by significant weather-based incidences hitting utilities across the nation and the risk of potential earthquakes in California, PG&E is assessing and enhancing its capabilities to handle catastrophic events



PG&E and the 1989 Loma Prieta Earthquake

While PG&E's response to past events has been "good enough" to elicit public praise, past performance levels may not be sufficient in the future. We have a goal to be prepared and respond to every kind of natural disaster.



# Other organizations also on the move

## Other organizations are also taking a hard look at their emergency response programs

### External Organizations



- Currently updating the Bay Area Catastrophic Earthquake Readiness and Response Concept of Operations utilizing the San Andreas 7.9M 1906 scenario
- Cal OES Coastal Region committee selecting a utility rep to join the committee – PG&E nominated



- Involved in the digital EOC concept
- Redesigning its volunteer experience process
- Revising its disaster services organization



City and County of San Francisco  
**LIFELINES COUNCIL**



- San Francisco selected by the GS&A Foundation's "100 Resilient Cities" project and given \$1MM given to use for increases in resiliency

### Utility Industry Players



- Connecticut Light and Power names new Senior Vice President of Emergency Preparedness
- Other utilities also naming officers to Emergency Management roles



- Edison Electric Institute's CEO sponsors a post-Sandy event
- Establishes national response event process to allocate Mutual Aid

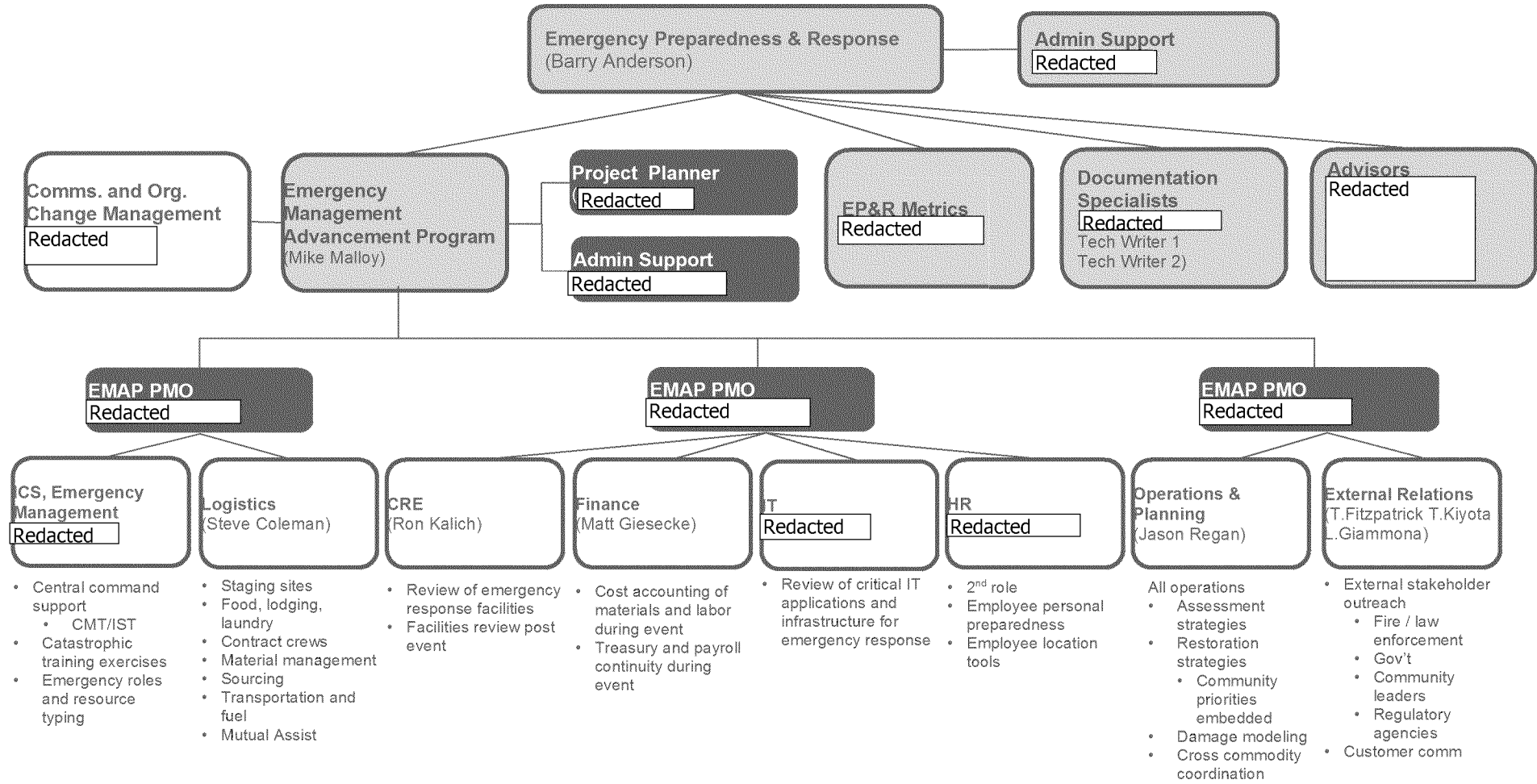


- Hosted four workshops utilizing use of social media in support of outage management: NY, Dallas, Chicago, SF

Timing provides PG&E an opportune moment to share and integrate



# EMAP Organization Structure



# Critical and Essential Infrastructure & County Priority Discussions

## County Infrastructure and Priorities (Bay Area Counties)

- Understanding County priorities and expectations of PG&E
- Review of current Critical and Essential list
- Request for information and data
- Lifeline Discussion and Agreement

## Discussion Dates (all to be held at County OEC's)

**Solano** – October 10<sup>th</sup>

**Napa** – October 30<sup>th</sup>

**Marin** – October 31<sup>st</sup>

**Sonoma** – November 1<sup>st</sup>

**Santa Clara** – November 5<sup>th</sup>

**Alameda** – November 14<sup>th</sup>

**San Francisco** – November 15<sup>th</sup>

**San Mateo** – December 5<sup>th</sup>

**Contra Costa** – December 17<sup>th</sup>

**All PG&E counties** – 1Q 2014



# Employee Preparedness

All PG&E Employees have an important role to play

## PG&E is enhancing employee preparedness by:

- Assigning emergency roles for all employees across the company
- Identifying and implementing a tool to locate all employees immediately following an event
- Assisting employees and their families in being personally prepared for a catastrophic disaster
- Evaluating ways that the company can assist affected employees by connecting them to available internal and external resources

## Employee roles will encompass:

### Critical Emergency Response Roles

- Damage assessment support
- Emergency data entry and administrative
- Staging site support
- Make safe support

### Community Support Roles

- Volunteer organization participation



# Begin Earthquake functional exercises - May 2014



## Full-scale earthquake exercise format

Multi-day / multi-phased event

Full scale exercise: Boots on the ground with all lines of businesses involved, including department leadership

Testing for operational process & knowledge

- EOC command and planning strategy (i.e. carve-outs)
- Logistics strategy (i.e. sites, fueling, mutual aid)
- Work force movement

Engage external media and government entities in messaging and participation

May-2014

Nov-2014

Mar-2015

July-2015





# Catastrophic Event Communications with the CPUC

