

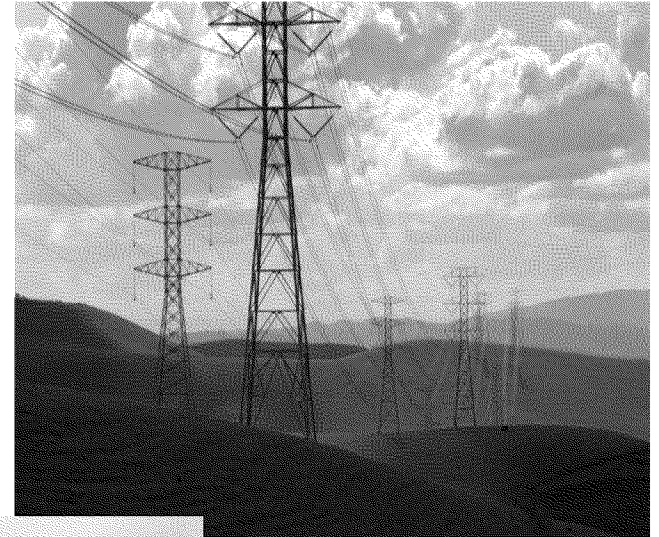
# ELECTRICITY FORUM

Tom Bottorff  
Senior Vice President, Regulatory Affairs  
Pacific Gas and Electricity Company  
March 4, 2014

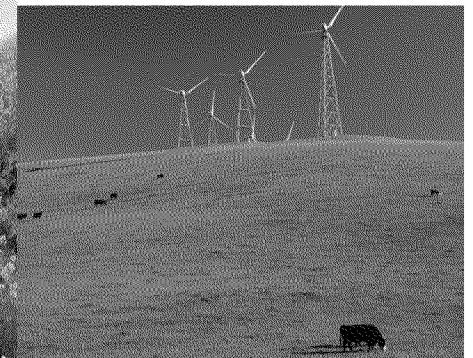


# You Have Choices

- ***Buy power from PG&E***
- ***Buy power from another provider***
- ***Generate some of your own***



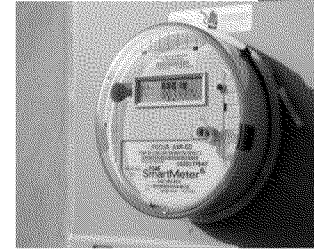
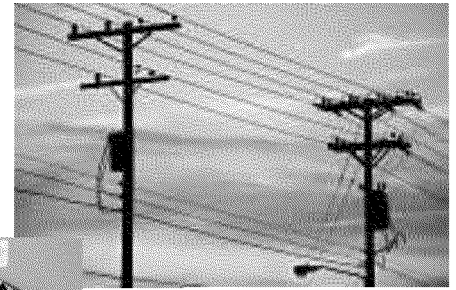
Solar




Wind

# Regardless of Your Choice

- ***PG&E continues to deliver the power you need***
- ***PG&E continues to maintain the electric infrastructure and respond to outages***
- ***PG&E continues to send you a bill***





## ENERGY STATEMENT

[www.pge.com/MyEnergy](http://www.pge.com/MyEnergy)

Account No: 1023456789-0  
 Statement Date: 07/17/2014  
 Due Date: 08/07/2014

**Service For:**  
 Brenda Alvarez  
 1234 Main Street  
 Apt. 3C  
 Santa Rosa, CA 95404

**Your Account Summary**

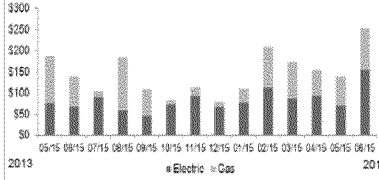
Amount Due on Previous Statement	\$404.99
Payment(s) Received Since Last Statement	-404.99
Previous Unpaid Balance	\$0.00
Current PG&E Electric Delivery Charges	\$83.15
Sonoma Clean Power (SCP) Electric Generation Charges	28.55
Current Gas Charges	34.91

**Questions about your bill?**  
 24 hours per day, 7 days per week  
 Phone: 1-866-743-0335 or  
[www.pge.com/MyEnergy](http://www.pge.com/MyEnergy)


**Total Amount Due by 08/07/2014      \$146.61**

**Local Office Address**  
 111 Stony Circle  
 Santa Rosa, CA 95401

**Monthly Billing History**



**Daily Usage Comparison**



Visit [www.pge.com/MyEnergy](http://www.pge.com/MyEnergy) for a detailed bill comparison.



# About PG&E

***We provide electricity and natural gas to about 15 million Californians***



Employees	About 20,000
Electric and natural gas distribution customers	5.1 million electric 4.3 million gas
Communities served in California	49 counties 243 cities
Service territory	70,000 square miles

# PG&E in Sonoma County

---

- **460 employees; 857 PG&E retirees**
- **Infrastructure investment in 2013**
  - \$68 million for electric projects (year 2 of 5-year modernization plan)
  - \$26 million for natural gas projects
- **Community involvement in 2013**
  - 720 employee volunteer hours at 58 local events
  - \$93,000 in employee charitable contributions
  - \$630,000 in PG&E charitable contributions

# PG&E in Sonoma County

## Major Community Programs:

- PG&E Bright Minds Scholarship Program
- PG&E Bright Ideas Grants to Schools
- PG&E and Red Cross Emergency Preparedness Partnership
- PG&E and Habitat for Humanity Solar Habitat Program
- PG&E and California State Parks Foundation Earth Day



Children's Museum of Sonoma County

## Nonprofits supported by PG&E in Sonoma County in 2013

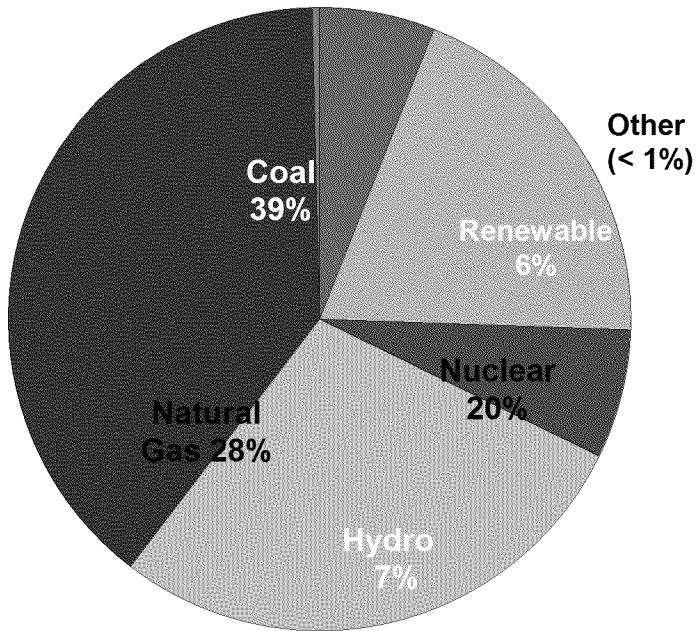
- American Red Cross, Sonoma-Mendocino-Lake Chapter
- Becoming Independent
- Bodega Bay Fire Protection District/Bodega Bay Firefighters Association
- Boys & Girls Clubs of Marin & Southern Sonoma Counties
- California Veterans Benefit Fund
- Celebrate Community Partnership
- Children's Museum of Sonoma County
- Chops Teen Center
- City of Cotati – 50<sup>th</sup> Anniversary Celebration
- City of Santa Rosa – Gang Prevention Awareness Week
- County of Sonoma – Pedestrian Safety Campaign
- Council On Aging – Meals on Wheels
- Fire Safe Sonoma
- Global Student Embassy
- Graton Day Labor Center
- Habitat for Humanity of Sonoma County
- Healdsburg High School
- Hospice
- Kid Scoop News
- La Luz Bilingual Center
- Living Room Center
- North Coast Builders Exchange
- Operation Care & Comfort/Sonoma Raceway
- Penngrove Social Fireman
- Petaluma Educational Foundation



Pacific Gas and  
Electric Company

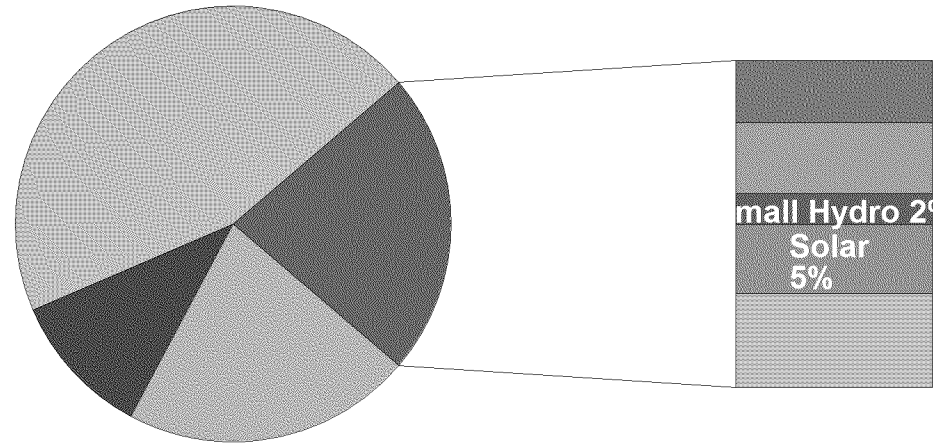
# Electric Generation Mix

## U.S. 2013



## PG&E 2013

(preliminary data)

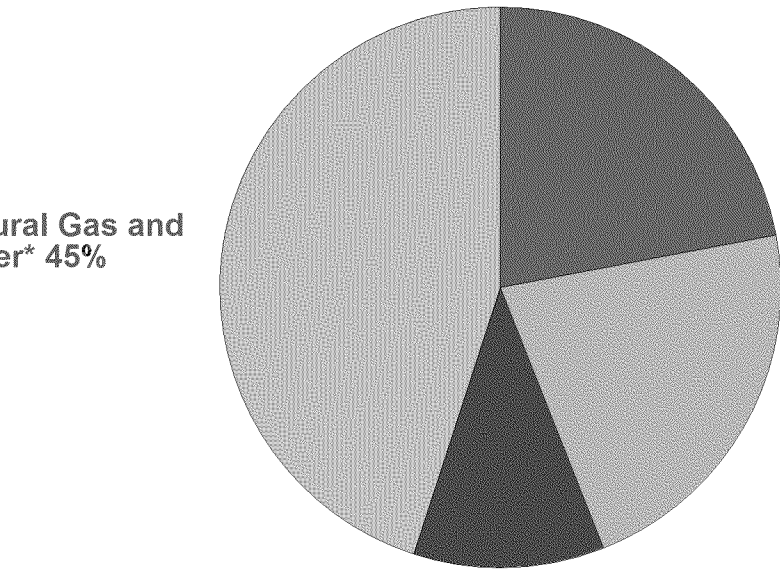


Data represents electric generation from December 2012 through November 2013.  
Source: EIA [http://www.eia.gov/electricity/monthly/update/resource\\_use.cfm#tabs\\_gen-1](http://www.eia.gov/electricity/monthly/update/resource_use.cfm#tabs_gen-1)

Other includes market purchases, other fossil resources.  
Source: 2013 delivery statistics are preliminary and subject to an independent audit and verification that will not be completed until October 1, 2014.

# PG&E's Electric Generation Mix

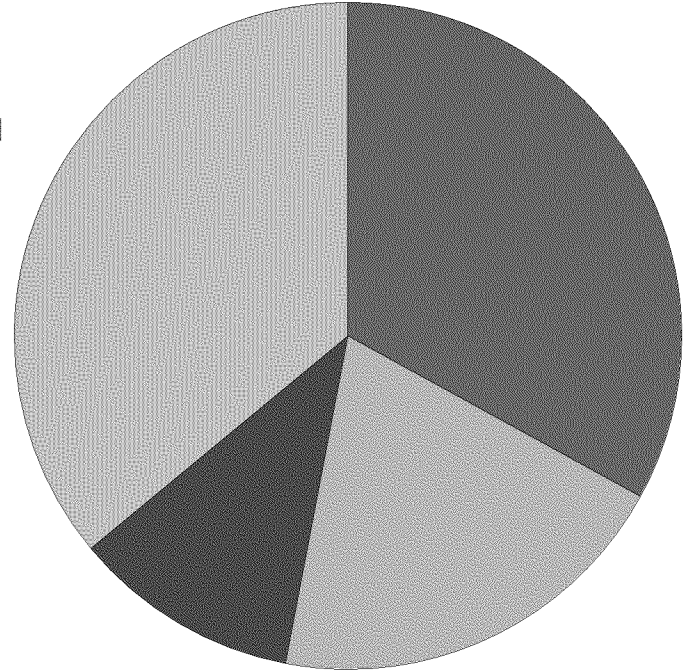
## 2013 Preliminary



Total GWh: 76,000

## 2014 Projected

Natural Gas and Nuclear\* 36%



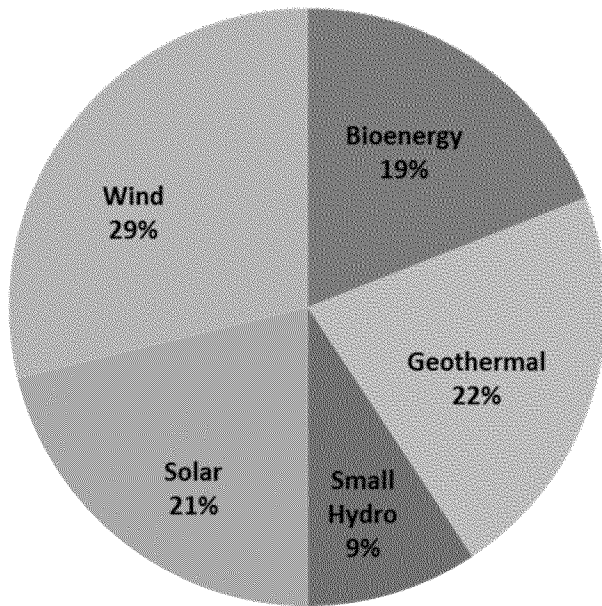
Total GWh: 81,000

\* Other includes market purchases, other fossil resources. GWh = gigawatt hours.  
 Source: 2013 delivery statistics are preliminary and subject to an independent audit and verification that will not be completed until October 1, 2014.

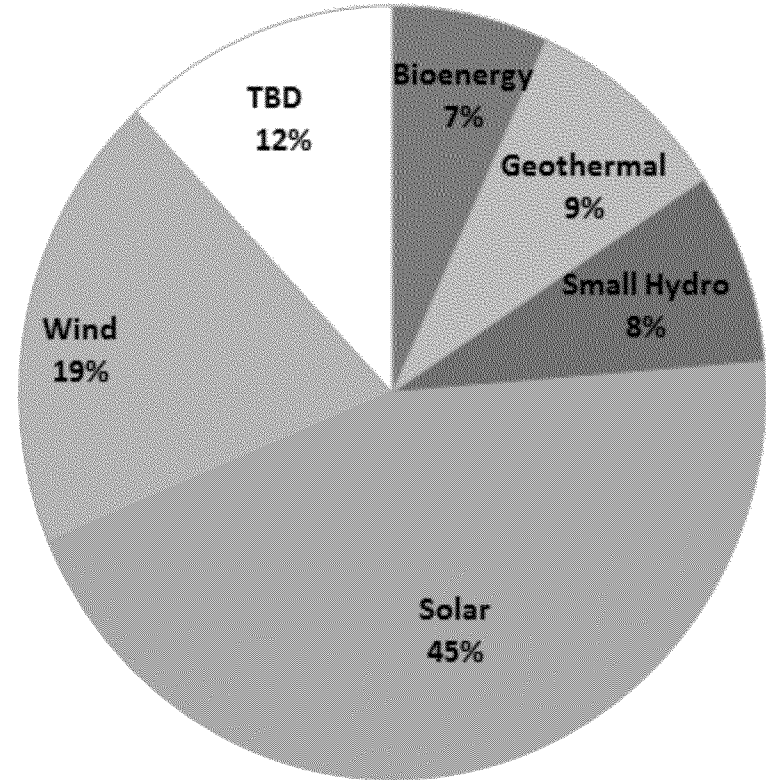


# Sources of Renewable Power – Today and in 2020

**2013 Preliminary**  
**22% of total bundled retail sales**



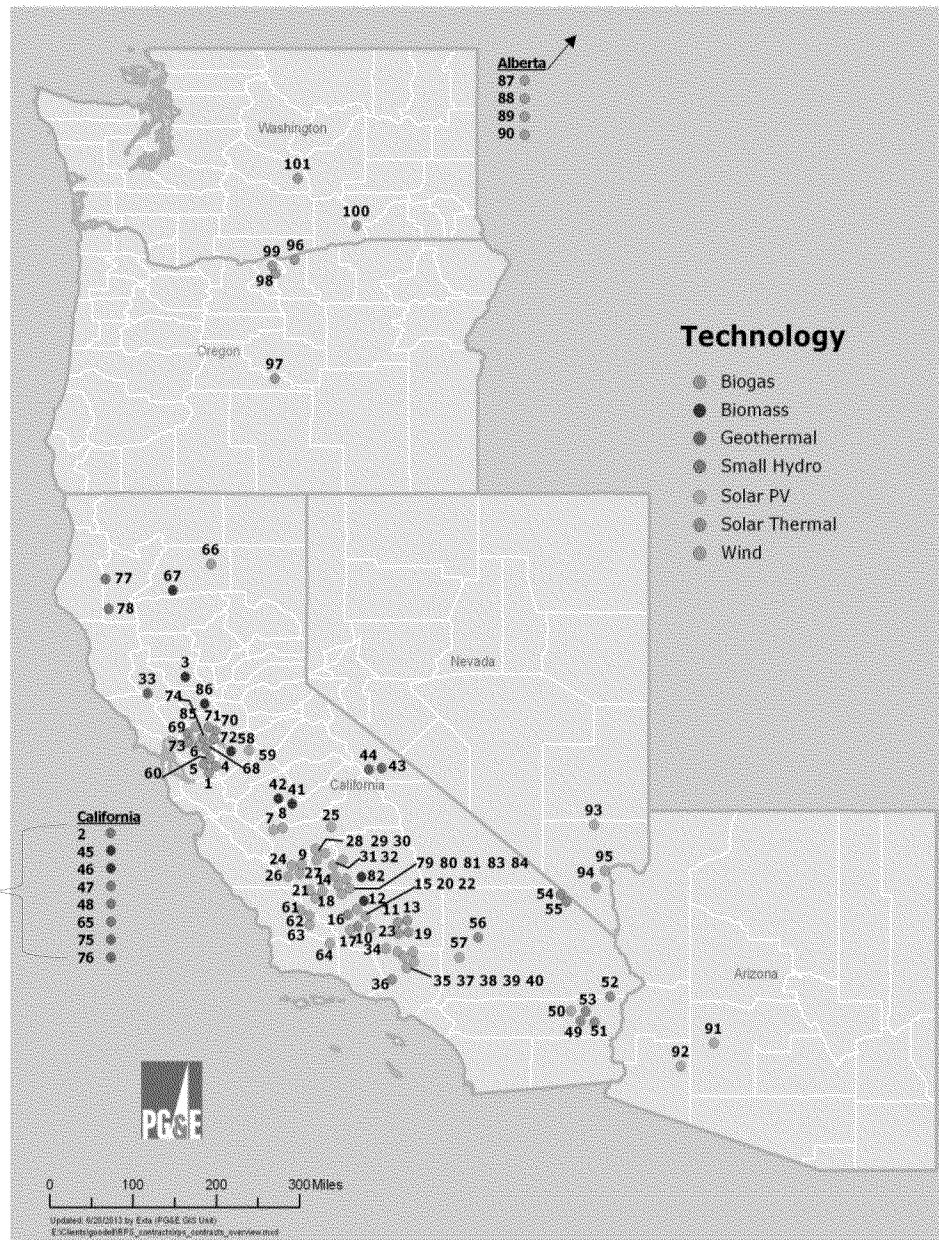
**2020 Projected**  
**33% of total bundled retail sales**



Source: PG&E's 2013 10-K filing and PG&E's 2013 IEPR Forecast. Last updated February 2014.

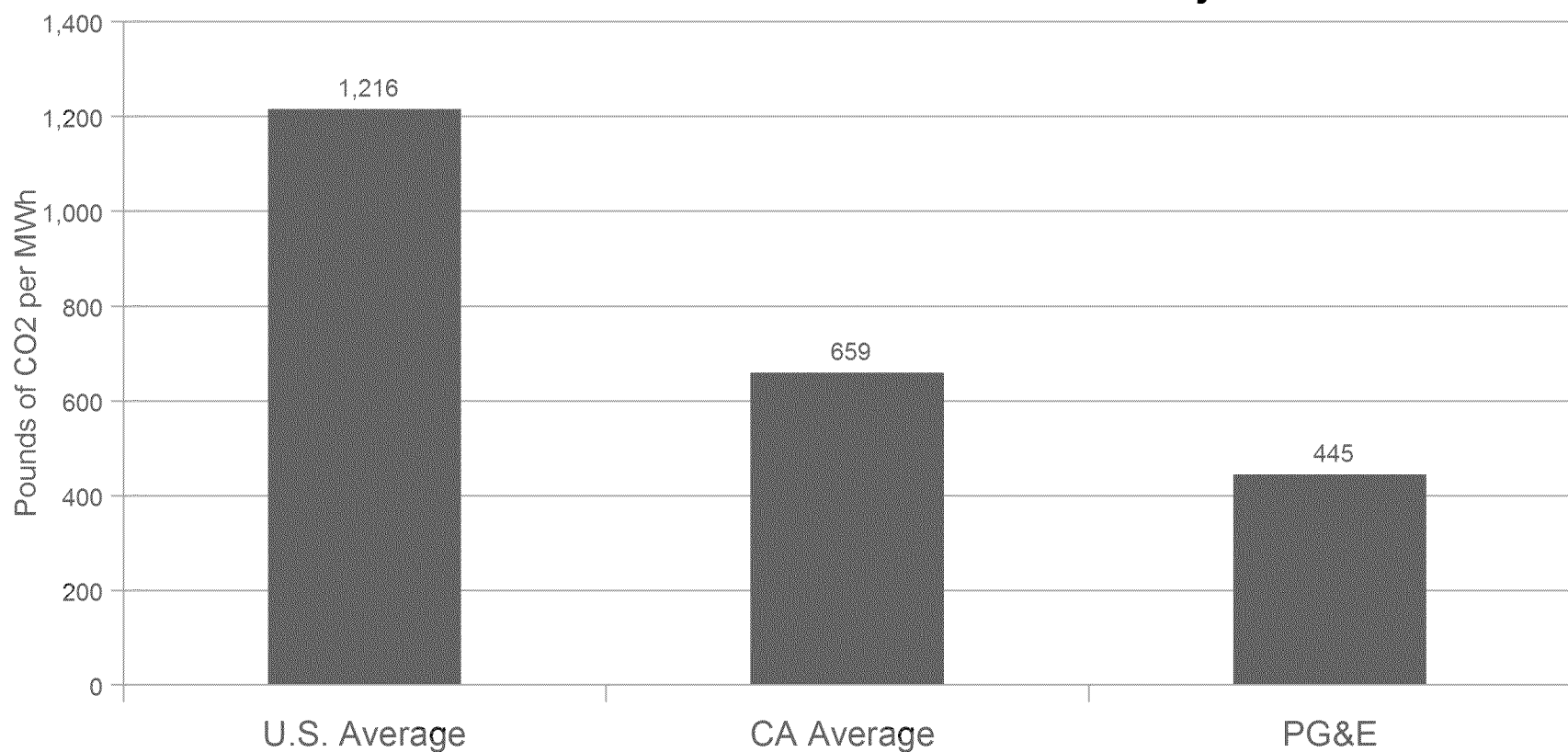
# Location of PG&E's Renewable Resources

Contracts with facilities  
in multiple locations



# Benchmarking PG&E's 2012 Emissions

## CO<sub>2</sub> Emissions for Delivered Electricity

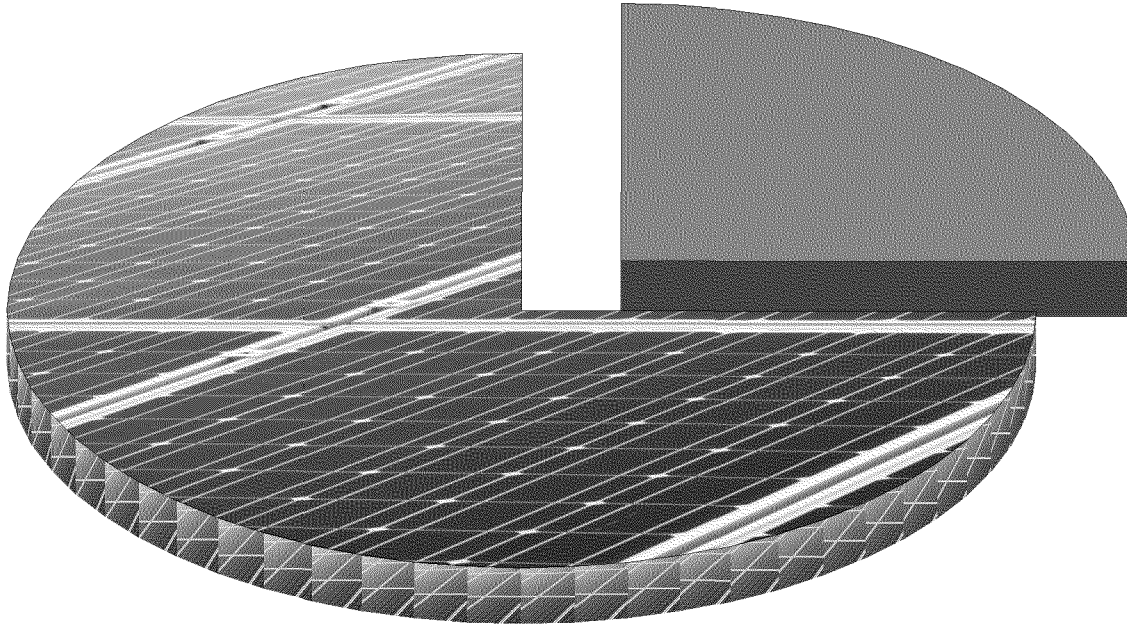


Source: U.S. and CA averages, U.S. Environmental Protection Agency.

Source: The Climate Registry, a third party verification of greenhouse gas emissions data.

# PG&E is a Leader in Retail Solar Photovoltaic

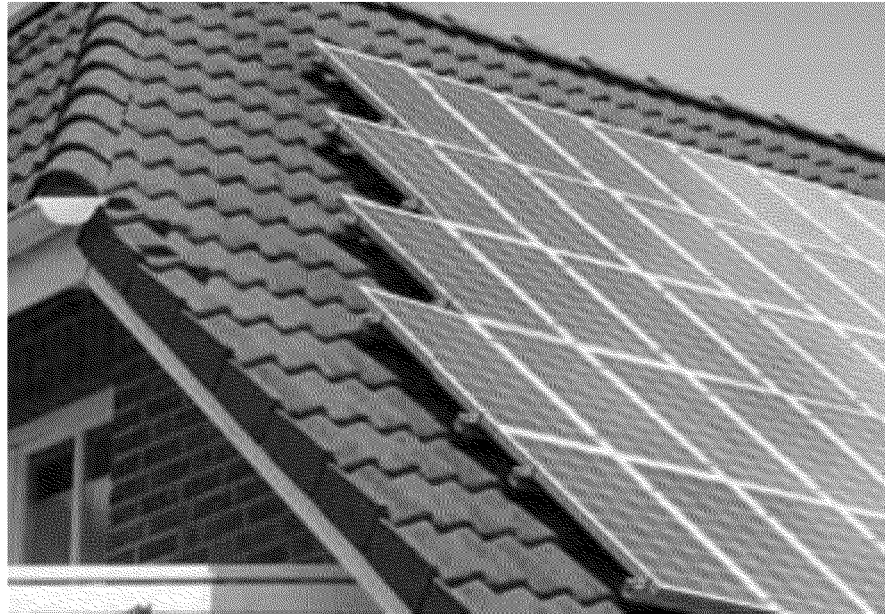
***One-fourth of customer solar installations in the U.S. are in PG&E's service territory***



■ PG&E ■ All Other U.S. Utilities Combined

*Source: Annual survey by the Solar Electric Power Association for 2012 (2013 results available June 2014).*

# Rooftop Photovoltaic for PG&E and Sonoma County

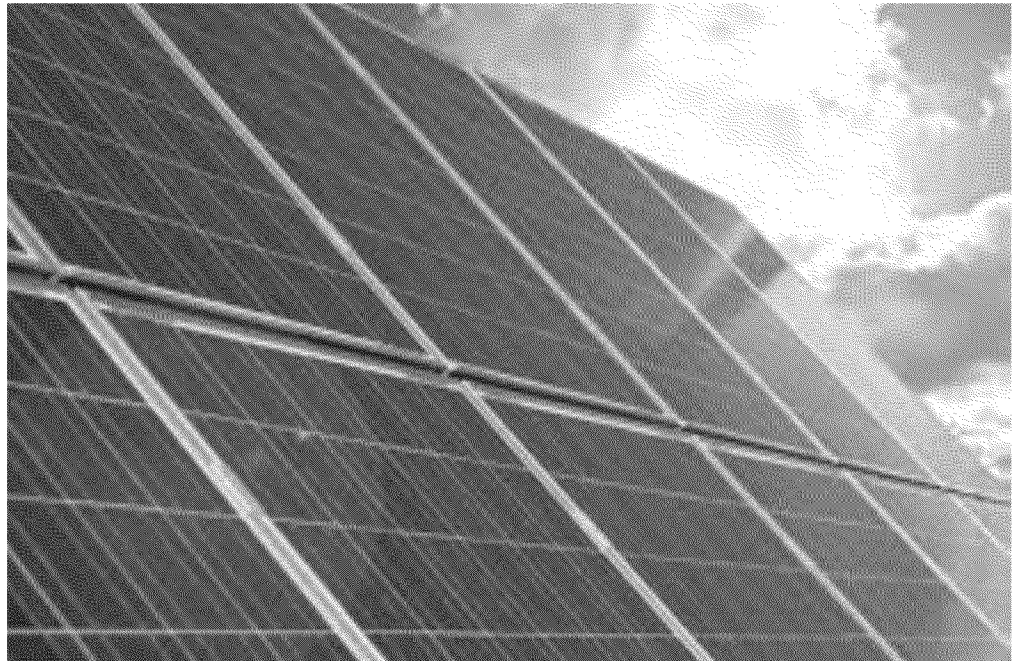


PG&E Service Area		Sonoma	
Installations	106,520	Installations	6,551
MW Capacity	1,042	MW Capacity	64

*Data as of 12/31/2013; MW = megawatt*

# PG&E's Green Tariff Shared Renewables Program

- *Option for customers to purchase up to 100% renewable energy*
- *Power to come from solar projects built in PG&E's service area*
- *Scheduled to be approved later this year*



# PG&E Invests in Alternative Fuel Technologies

***From CNG and flex-fuel...***



***...to fully electric***

**Over 21% of PG&E's fleet uses alternative fuel**

**PG&E's fleet ranks #3 in the U.S. for number of electric vehicles (#1 for energy utilities) *Automotive Fleet Magazine***



***...to custom hybrids***



# 2013 Recognition for PG&E as Sustainability Leader

- **American Council for an Energy-Efficient Economy**

PG&E awarded “top honors” for six of its energy efficiency programs; programs were recognized nationally as “exemplary” for their “effectiveness and innovation in helping customers achieve greater levels of energy efficiency in their homes, businesses, and industries.”

- **Corporate Responsibility Magazine – 100 Best Corporate Citizens**

PG&E ranked 37<sup>th</sup> of top 100 companies that best advance corporate responsibility and sustainability through disclosure, policy and performance.

- **Dow Jones Sustainability North America Index**

PG&E recognized for 6th straight year and one of only seven U.S. energy utilities, for ongoing commitment across the economic, environmental, and social dimensions of sustainability.

- **Solar Electric Power Association – 2012 Utility Solar Rankings**

PG&E recognized for 5th straight year; ranked first in nation among utilities for most solar megawatt capacity added.

- **U.S. Environmental Protection Agency – 2013 Energy Star Partner of the Year-Sustained Excellence Award**

PG&E recognized for continued leadership in protecting the environment through its long-term commitment to energy efficiency.

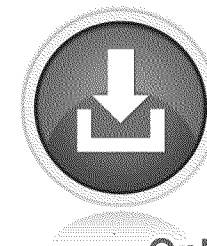


# Other Services We Provide

- **Rebates for investing in energy efficiency\***
- **Help paying your bill\***
- **Access to online energy information\***
- **Alternative pricing plans (Time-of-Use)\***
- **CARE<sup>1</sup> and Medical Baseline\***

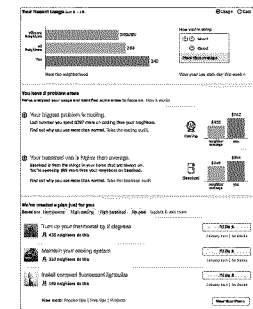
\* **These services are available to customers whether they choose PG&E or Sonoma Clean Power to provide their electricity.**

1. California Alternate Rates for Energy



**Green Button  
Download  
My Data**®

Online Information



Home Energy Reports

Energizing California  
for 150 Years



***Pacific Gas and  
Electric Company***<sup>®</sup>

---

Thank you!  
**QUESTIONS?**