



# Pipeline Pathways

## Keeping Safety on the Map

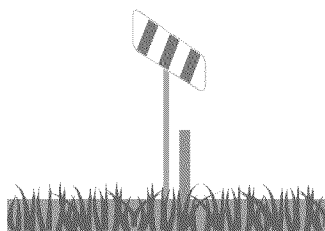
PG&E is building a safer, stronger natural gas system. In addition to our ongoing pipeline safety initiatives, here is a step-by-step guide to how we are ensuring ready access to our pipelines now and into the future.

### 1 High-precision Mapping



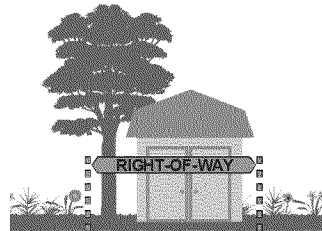
We've conducted a comprehensive survey of our 6,750-mile natural gas transmission pipeline system using GPS mapping technology. The result is a more precise pipeline map, which will allow us to better serve our customers, enhance our ongoing pipeline safety programs and work more efficiently with first responders.

### 2 Marking for Safety



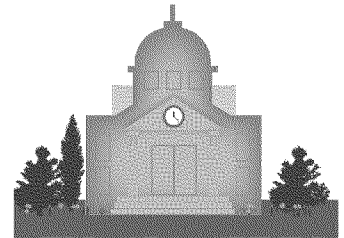
Pipeline markers indicate the location of the underground pipe and are a reminder to use extra care around gas transmission pipelines. We're replacing damaged or aging pipeline markers and, in some cases, installing new markers throughout our service area.

### 3 Checking the Area Above Our Pipelines



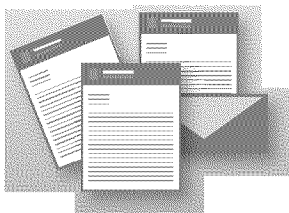
We're checking the area above our gas pipeline (also known as the right-of-way) for items like sheds, patios, trees and certain vegetation, which can interfere with our ability to maintain, inspect and safely operate the system. Rights-of-way create a shared responsibility between PG&E and property owners to maintain the area above the pipeline.

### 4 Reaching Out to Local Governments



We're meeting with state, federal and local officials to discuss our program for improving access to our pipelines. It is common for gas pipelines to travel beneath franchise and city-owned property, such as streets and parks. We are working with city officials to remove items above the pipeline and discuss compatible landscape restoration.

### 5 Communicating with the Neighborhood



If we notice any items in the area above the pipeline on private property, we're contacting owners directly and working together throughout every step of the process. When work is taking place along city streets or public areas, we're reaching out to neighbors in advance and ensuring they're aware of the project.

### 6 Working Cooperatively



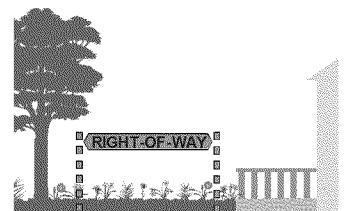
PG&E depends on ready access to the area above the pipeline in order to safely operate the system. When structures, trees or certain vegetation are located in the area above the pipeline, we work cooperatively with the property owner to discuss necessary removals and restoration options.

### 7 Restoring the Area Above Our Pipeline



Throughout our work, we access property with care and respect. We know how important trees are to residents, the community and the environment. When a tree must be removed for safety reasons, we work with the owner to restore the area with compatible landscaping.

### 8 Improving Pipeline Safety



Going forward, as part of our regular inspections, we'll be sharing information with property owners, providing ongoing education and partnering with communities to help build awareness around compatible uses near critical infrastructure. Please see the reverse side for more information.

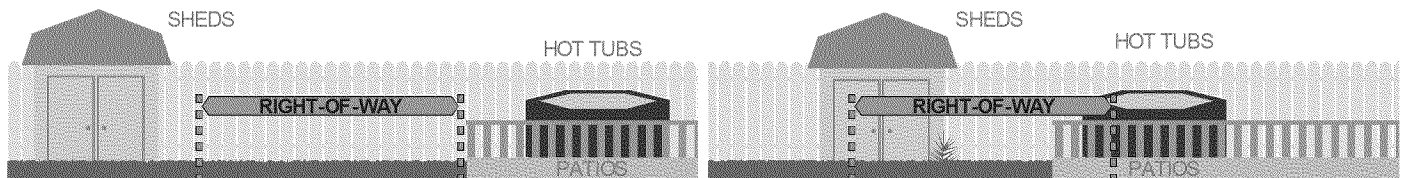
Learn more at [www.pge.com/pipelineaccess](http://www.pge.com/pipelineaccess) or call our Land Management Department at 1-877-259-8314.

# How You Can Help Maintain the Area Above the Pipeline

Property owners are an important partner in helping PG&E operate a safe and reliable natural gas transmission system. While PG&E regularly inspects, tests and patrols its transmission pipelines, property owners are responsible for keeping the area above the pipeline readily accessible. The following are basic guidelines regarding compatible uses above the gas transmission pipeline. For more specific guidance, we encourage you to contact us at 1-877-259-8314.

## Structures

Buildings and structures such as storage sheds, room additions, overhangs, pools and decks can interfere with PG&E's safe operation of the pipeline. Please note the list below is only a guide and not all-inclusive.



The diagram shows two cross-sections of a pipeline right-of-way. The left side, labeled 'Compatible Uses', shows a shed, a hot tub, and a patio, all with a fence that has no posts within five feet of the pipeline. The right side, labeled 'Incompatible Uses', shows a shed, a hot tub, and a patio, but with a fence that has posts within five feet of the pipeline.

**Compatible Uses**  
Vinyl, wood and/or chain link fences may cross the pipeline if there are no fence posts installed within five feet of either side of the pipeline.

**Incompatible Uses**

- Buildings or storage sheds
- Brick, concrete or block walls and fences
- Pools, hot tubs or wells
- Patios, decks or gazebos
- Sport Courts
- Other impermeable hard surfaces
- Storage of heavy equipment

## Trees and Vegetation

Certain trees and large shrubs in the area above the pipe can interfere with PG&E's safe operation of the pipeline and their roots have the potential to impact the pipe.



The diagram shows two cross-sections of a pipeline right-of-way. The left side, labeled 'Compatible Uses', shows low-lying vegetation like flower beds, lawns, and shrubs. The right side, labeled 'Incompatible Uses', shows a large tree with a woody stem and other shrubs.

**Compatible Uses**  
Low-lying vegetation, including flower beds, an assortment of lawns, grasses, mosses, low-growing herbaceous shrubs, vegetable gardens and other plants generally work well in the area above the pipeline.

**Incompatible Uses**  
Trees, shrubs and plants with a woody stem, such as manzanita and juniper bushes, should not be located above the pipeline.

## For More Information

PG&E is here to help. If you are unsure if there is a gas pipeline on your property, or if you are considering a construction or landscaping project, for the safety of you and your community, please call us at 877-259-8314 and be aware of any PG&E facilities or land use restrictions.

## Know what's below. Call before you dig.

If you plan on doing any digging, such as planting a tree or installing a fence, please call 811 before you dig. With one free call to Underground Service Alert (USA) at least two working days in advance, PG&E will send a crew to mark the underground gas and electric facilities before you begin work, helping you to plan a safe project.

