



# Nuclear Power and California's Evolving Energy Market

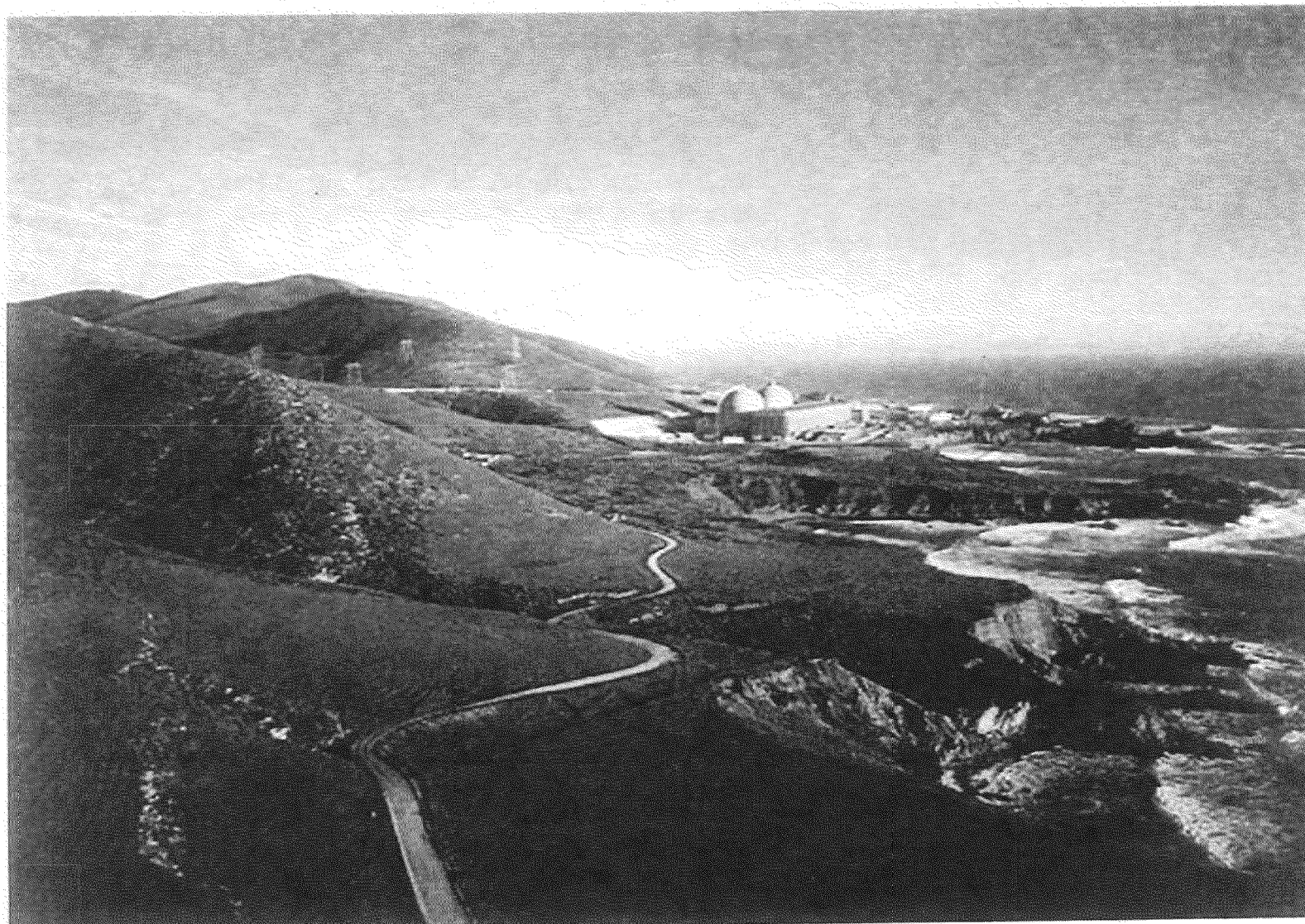
## Increased Need for More Flexible Generation

## DCISC Fact Finding Mtg

### 12/12/13

Jeff Summy

R1402001 AYNK 001 Q4 01



R1402001 A4NR 001 Q4 02



# Presentation Agenda

PG&E's Electric Generation Portfolio Mix

Where does the Power Come from

How is Market Price Determined

What is the Generation mix in the future

What does that do to Net Load Profile

[REDACTED]

[REDACTED]

[REDACTED]

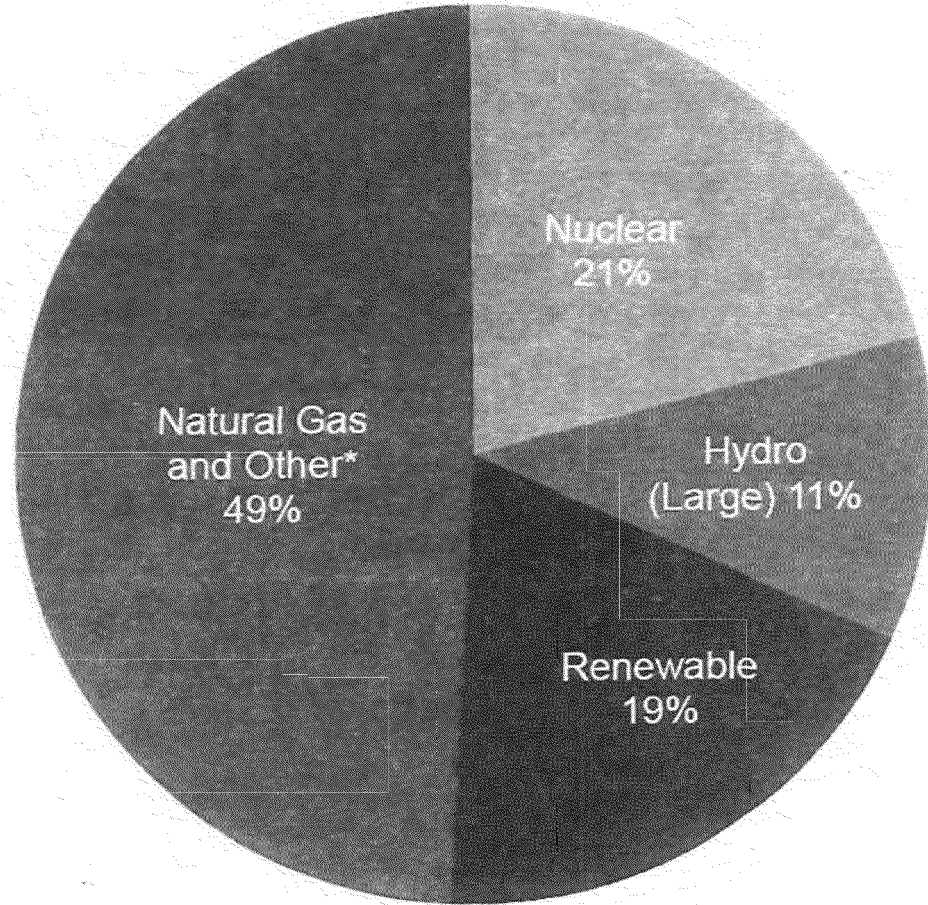
R1402001 A4NR 001 Q4 03



# PG&E's Electric Generation Portfolio Mix

## 2012 Preliminary Data

More than 50% of PG&E's Electric Generation Portfolio is from non-GHG emitting resources



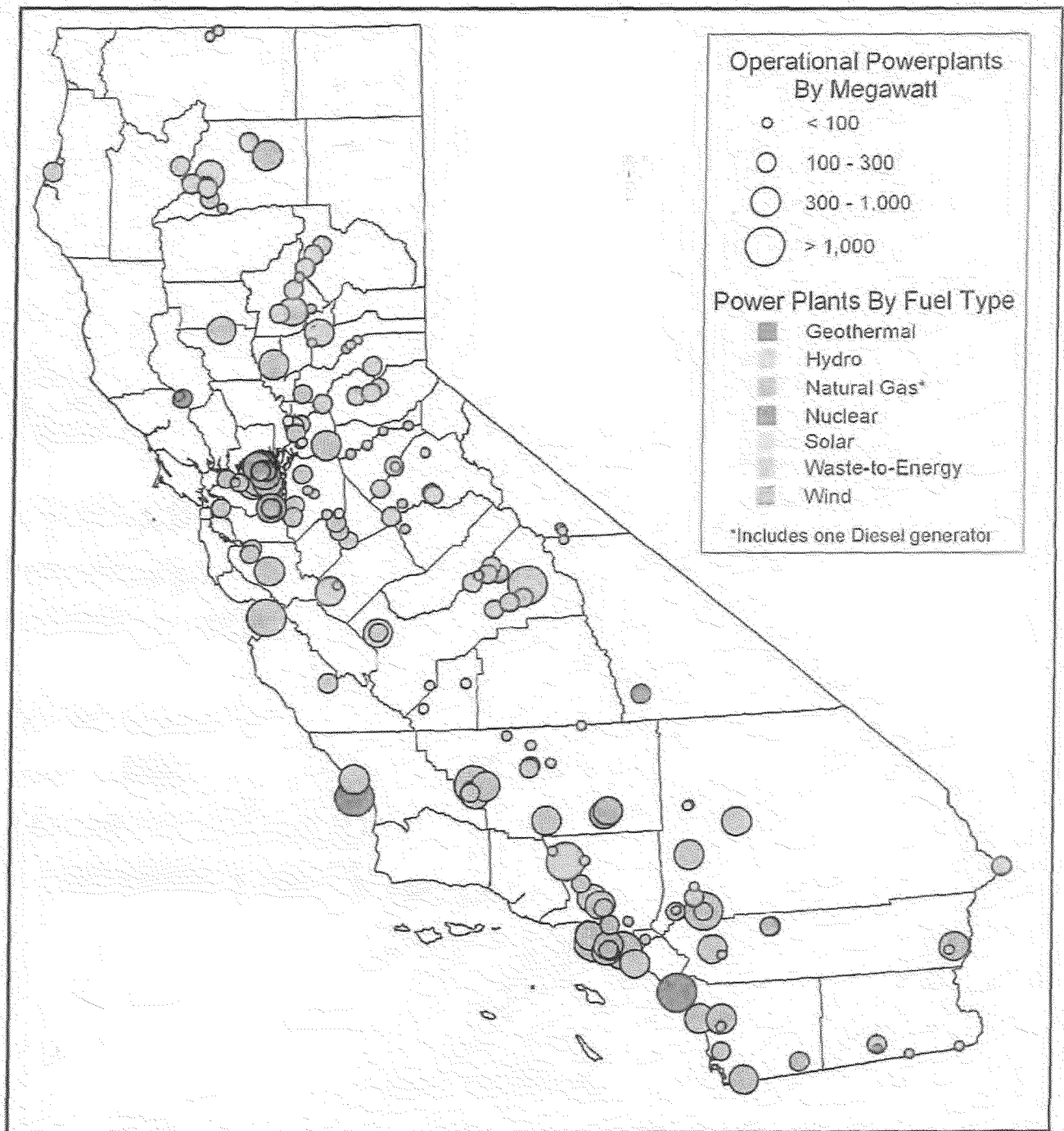
\* Other includes market purchases and other fossil resources.

Data Sources: Preliminary report compiled by PG&E's Energy Compliance and Reporting department as of April 2013.

R1402001 AYNR 001 Q4 04

# California's Major Generating Stations

PG&E procures from generators throughout California and the West.



Map provided by California Energy Commission, April 2013

5

R1402001 AYNR 001 Q4 05