

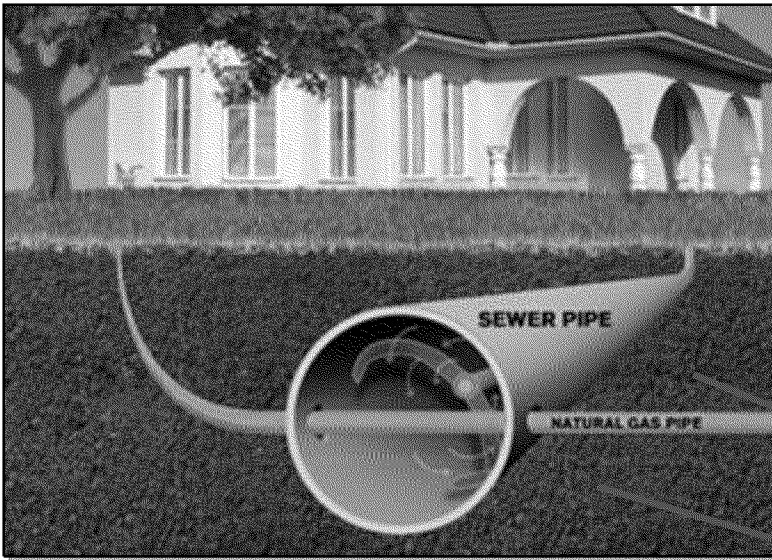
Cross Bores Inspections

Distribution Integrity Management

May, 2014

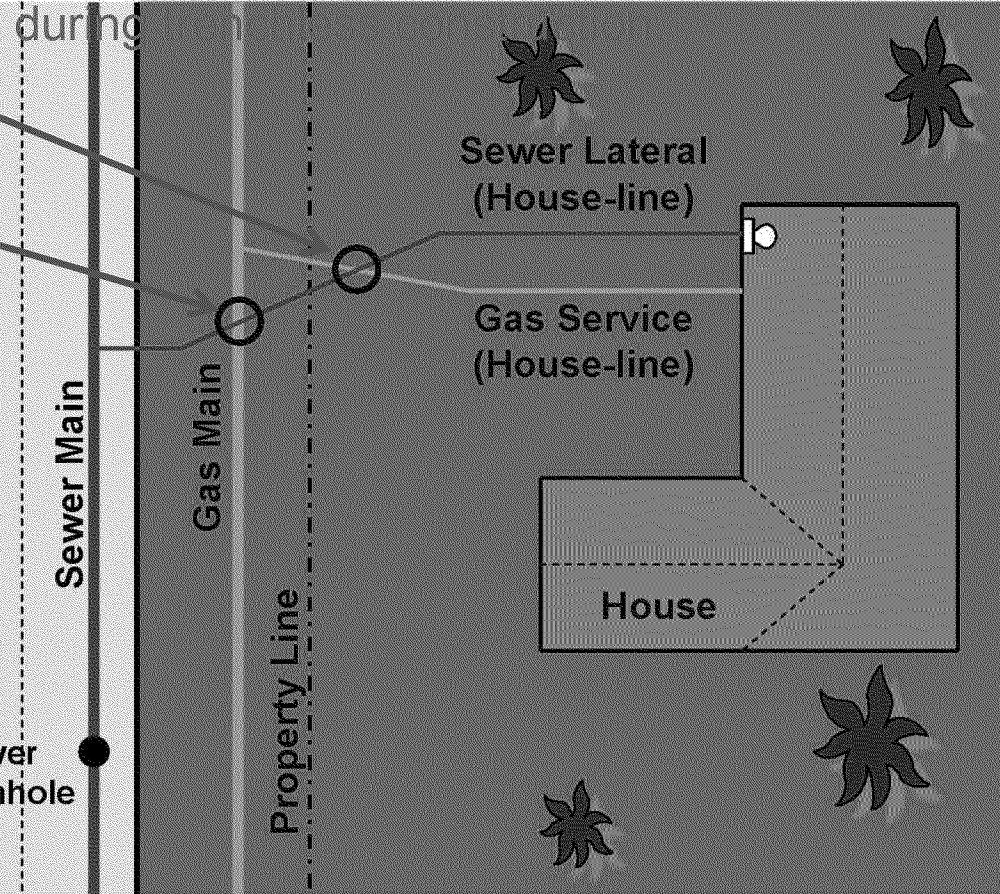


What is a Cross Bore?



What is a cross bore?

A cross bore is the inadvertent placement of a gas main or service through a sewer line. Sewer cross bores typically occur



What can happen as a result of a cross bore?

The sewer line may become blocked and need to be cleaned by a plumber or the building owner with mechanical cleaning tools. This may cause the gas line to be cut which could cause a release of gas.



Cross Bores – An Industry Issue

1976: First recorded instance of a Cross Bore

- Kenosha Wisconsin
- Fire, explosion, four injuries, one home destroyed and two adjacent homes damaged
- Investigated by NTSB

2004: Phoenix Arizona

- Fire, explosion, four injuries one home destroyed

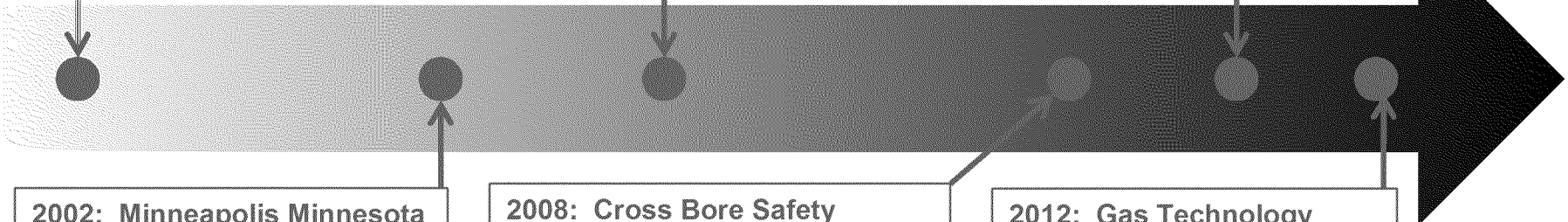
New York State

- Fire, explosion, one fatality, one home destroyed

2010: St. Paul Minnesota

- Fire, explosion, one injury, one home destroyed

AGA publishes report on Gas Pipelines and Unmarked Sewer Lines.



2002: Minneapolis Minnesota

- Fire, explosion and two homes destroyed

2008: Cross Bore Safety Association formed, a non-profit organization of construction, pipe manufacturer, inspectors and utility professionals

2012: Gas Technology Institute (GTI) publishes report on Cross-Bores Best Practice and Outreach Program

Best practices focus on:

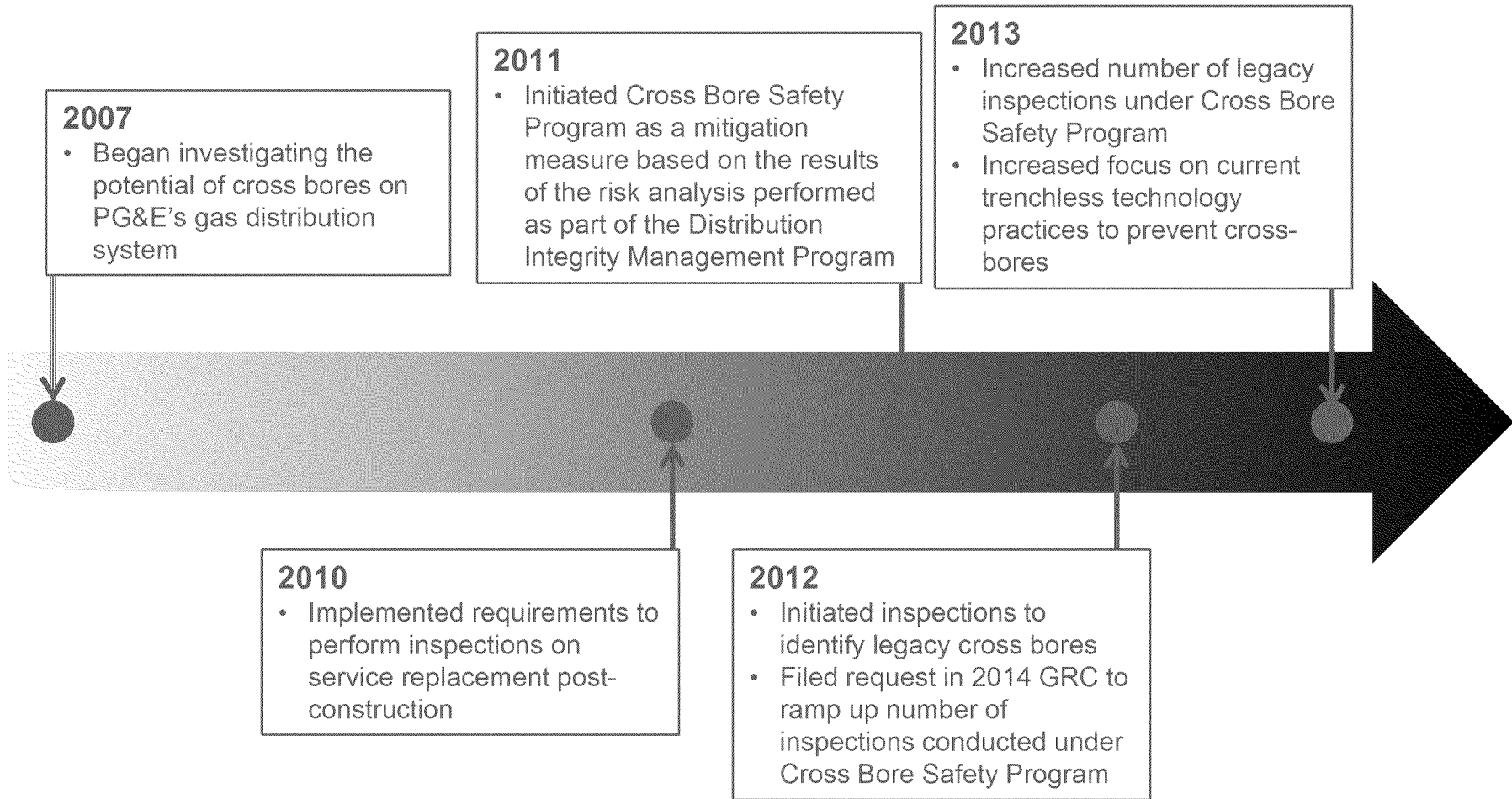
- Compliance, resources, awareness, records and risk assessment and mitigation

- Eighteen known cross bore incidents in U.S. since 2002¹
- Industry average cross bores estimated at 2-3 per mile of gas pipe and can be higher regionally, especially if sewer and gas lines are installed at the same depth²
- Incident in Minnesota resulted in a state mandated program to address cross bores³

¹ GTI "Mitigating the Risk of Cross-Bores", presentation to Northeast Gas Association, October 4, 2012
² Cross Bore Safety Association (CBSA), Legacy Cross Bores
³ Minnesota Department of Public Safety, State Fire Marshal and Pipeline Safety, Alert Notice, May 10, 2010



PG&E's History with Cross Bores⁴

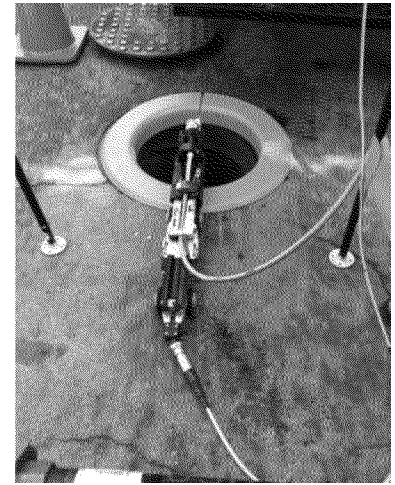




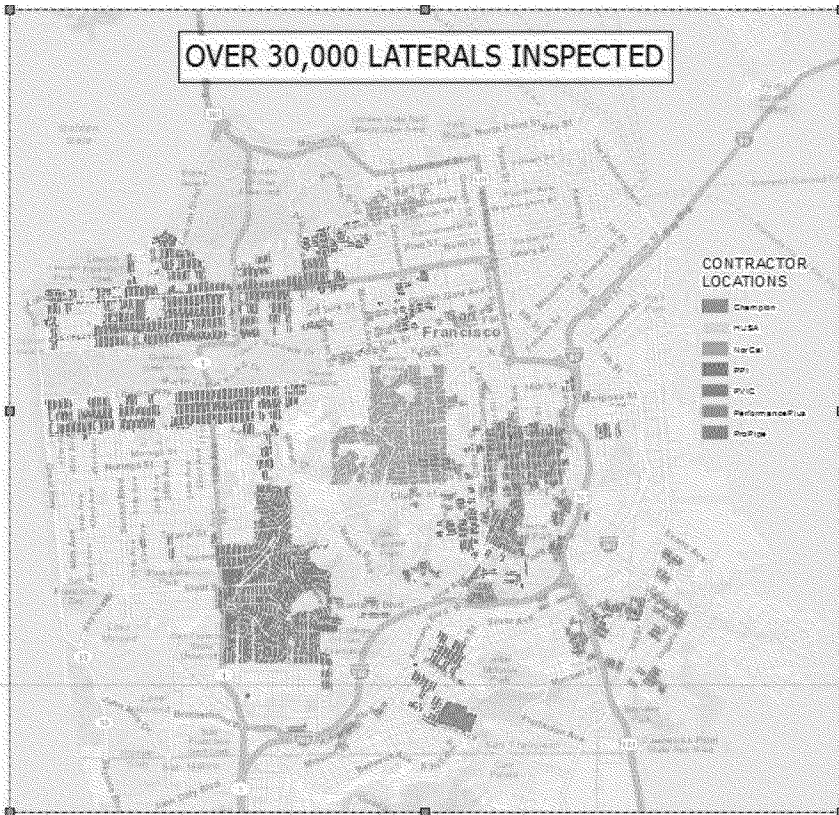
Inspection Methods

Camera equipment is either

- Inserted into a sewer manhole and launched up each individual sewer lateral
- Inserted through a toilet, trap, or cleanout at the house and pushed to the street

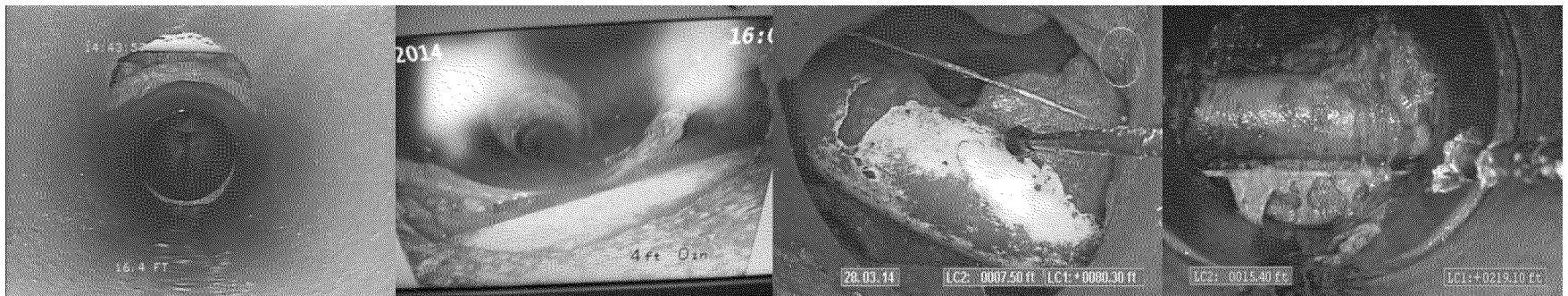


Tracking, Notification and Repair Process



When a cross bore is identified:

- Owner of sewer notified
- PG&E crews dispatched if blockage condition exists
- Gas line relocated out of sewer lateral
- Sewer repaired by licensed plumber
- Find rate is approximately 1 per 1,000 inspections or roughly 2 per mile of main, consistent with industry experience



- Materials distributed to key stakeholders explaining cross bores and requesting appropriate action when a cross bore is suspected.
- In 2012, PG&E sent safety brochures on Cross Bores to 12,500 sewer districts, public works agencies, plumbers, and equipment rental stores.
- In 2013, we completed two notifications totaling 25,000 brochures with an additional 283 mailings to sewer agencies and plumber unions.
- In 2014, in addition to our stakeholder mailings, we included cross bore information in March as a bill insert.

When Natural Gas Lines Intersect Sewer Lines
Safety Tips for Drain Cleaners, Sewer Cleaners, and Plumbers

CAUTION

Quando las tuberías de gas natural se intersectan con las tuberías de drenaje
Consejos de seguridad para plomeros, limpiadores de drenajes y limpiadores de alcantarillados

In a natural gas emergency call 911 and PG&E at 1-800-743-5000 immediately.
En una emergencia de gas natural, llame al 911 y a PG&E al 1-800-743-5000 de inmediato.

Safety Tips for Clearing Out a Sewer Lateral

The current practice involves using a mechanical snare with utility lines that require, depending on the size, 1 1/2" to 2" diameter. Careless or inexperienced plumbers can inadvertently cause a cross bore on private property and are typically covered for underground facilities damage (UFD) and can go undetected during digging. The undetected cause is that a utility lateral has been cut through a sewer lateral in which it crosses a "cross bore".

A cross bore in the sewer lateral is a pipe that has been cut through a sewer lateral. The blockage can be identified by the utility line. For natural gas lines, the use of camera may not be immediately apparent and gas can migrate through the lateral and concentrate in sewer lines and nearby structures.

To prevent the potentially hazardous situation, consider the following:

- Before digging, look for signs of landscaping that could be causing the obstruction. If there are none, call the owner of the area to see if there are any records in the area that could show the location of the utility line.
- Do an aerial or ground survey to see if there are any signs of utility lines in the area.
- If you have access to utility line records, use them to find lateral and gas service lines.
- If you are not sure of the location of the utility line, call the utility company for assistance.
- After digging, return the utility lines to their original position. Do not use a camera to check for leaks when you are not sure of the location of the utility line. Do not use a camera to check for leaks when you are not sure of the location of the utility line.

If you suspect a gas leak, immediately wear all appropriate safety gear, including eye protection, and call PG&E at 1-800-743-5000 immediately. From a safe location call 911 and PG&E immediately at 1-800-743-5000.

Safety Tips for Drain Cleaners, Sewer Cleaners, & Plumbers

Check here for advice on many topics as you head into the field.

Have a copy of this brochure in your truck. It's a handy reference for you and your crew.

From natural gas leaks, call 911 and PG&E at 1-800-743-5000 immediately.
Si sospecha que hay una fuga de gas natural, llame al 911 y a PG&E al 1-800-743-5000 de inmediato.

The Breaker in a Pipeline, not Approval, is all that's new.

- The breaker is a device that is used to stop the flow of gas in a pipeline.
- The breaker is used to stop the flow of gas in a pipeline.
- The breaker is used to stop the flow of gas in a pipeline.

How to Use This Brochure

- Refer to this brochure for information on how to use the breaker.
- Refer to this brochure for information on how to use the breaker.
- Refer to this brochure for information on how to use the breaker.

Safety Tips for Clearing Out a Sewer Lateral

When clearing out a sewer lateral, it is important to be aware of the location of the utility lines. The current practice involves using a mechanical snare with utility lines that require, depending on the size, 1 1/2" to 2" diameter. Careless or inexperienced plumbers can inadvertently cause a cross bore on private property and are typically covered for underground facilities damage (UFD) and can go undetected during digging. The undetected cause is that a utility lateral has been cut through a sewer lateral in which it crosses a "cross bore".

A cross bore in the sewer lateral is a pipe that has been cut through a sewer lateral. The blockage can be identified by the utility line. For natural gas lines, the use of camera may not be immediately apparent and gas can migrate through the lateral and concentrate in sewer lines and nearby structures.

To prevent the potentially hazardous situation, consider the following:

- Before digging, look for signs of landscaping that could be causing the obstruction. If there are none, call the owner of the area to see if there are any records in the area that could show the location of the utility line.
- Do an aerial or ground survey to see if there are any signs of utility lines in the area.
- If you have access to utility line records, use them to find lateral and gas service lines.
- If you are not sure of the location of the utility line, call the utility company for assistance.
- After digging, return the utility lines to their original position. Do not use a camera to check for leaks when you are not sure of the location of the utility line. Do not use a camera to check for leaks when you are not sure of the location of the utility line.

If you suspect a gas leak, immediately wear all appropriate safety gear, including eye protection, and call PG&E at 1-800-743-5000 immediately. From a safe location call 911 and PG&E immediately at 1-800-743-5000.

Protecting in Your Community
Working in your area

When you see a sign that says "Protecting in Your Community" it means that PG&E is working to protect your community from natural gas leaks.

Sewer inspections begin within a few weeks. The sewer inspection process is a multi-step process that involves inspecting the sewer lines for leaks and blockages. PG&E will be performing a safety inspection of your sewer lines to ensure they are safe and sound.

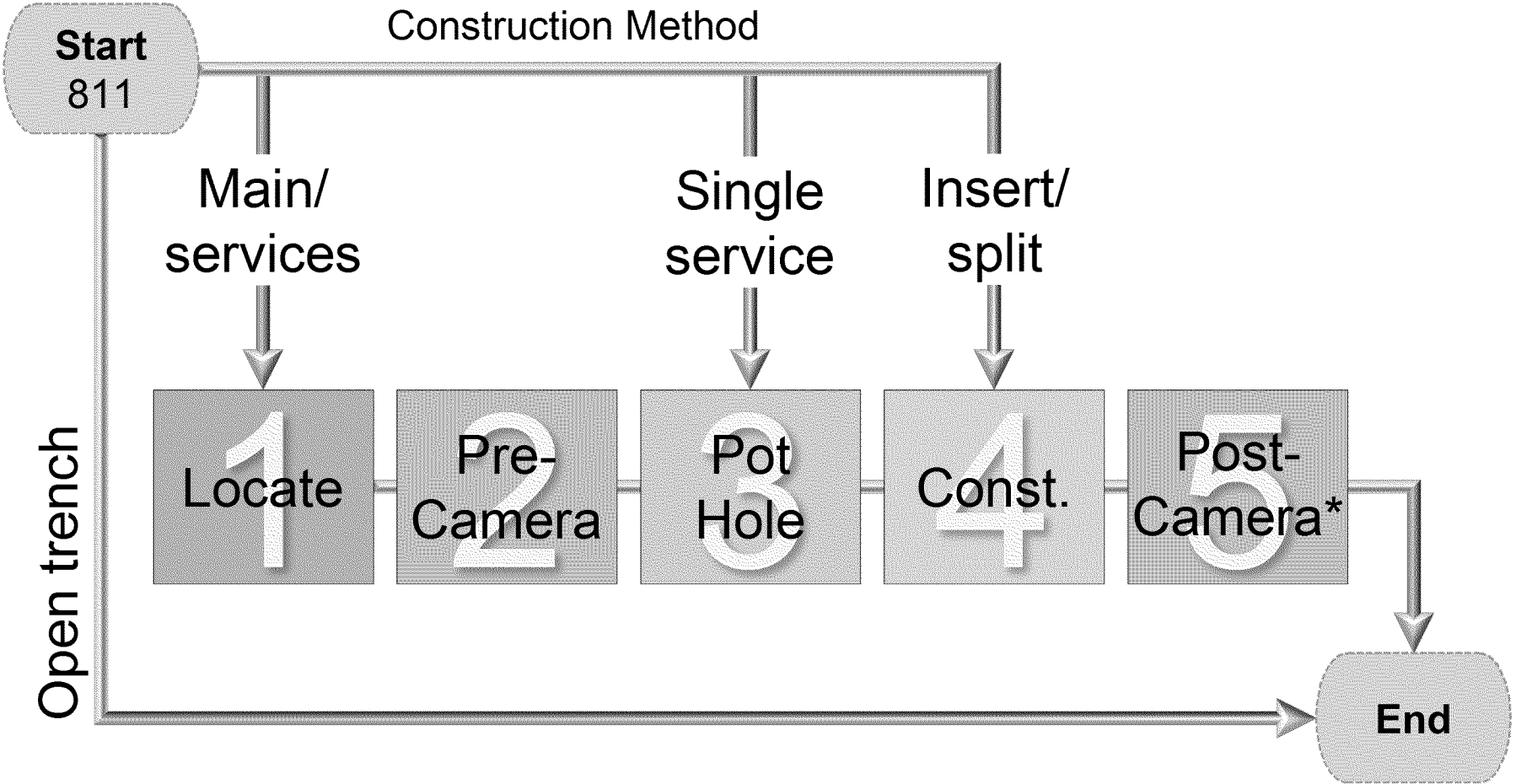
What to expect

- A sewer inspection will be performed on your sewer lines.
- The inspection will be performed by a PG&E representative.
- The inspection will be performed by a PG&E representative.

PG&E is committed to providing the highest quality of service to our customers. We are committed to providing the highest quality of service to our customers.



Cross Bore Prevention Process



* Perform before job closeout if pre-locate was completed.
Perform within 24 hours if NO pre-locate was completed.



Benchmark Results

Program	Benchmark Source	Comments
Legacy	American Gas Association Survey	PG&E provides public outreach consistent with the industry best practices. Not all utilities have legacy inspection programs.
Prevention	American Gas Association Survey Gas Technology Institute (GTI) Local and National Contractors	PG&E's new procedures implements best practices to ensure crossbores are not created given the combination of the pre-camera, pothole and post-camera inspections.
	Other Major US Utilities	PG&E is not only consistent with practices followed by other major US utilities but also meets best practices outlined in GTI's "Cross Bore Best Practices – Best Practices Guide".