



Simplified Unit Distribution Wood Pole Assemblies

December 10th, 2012

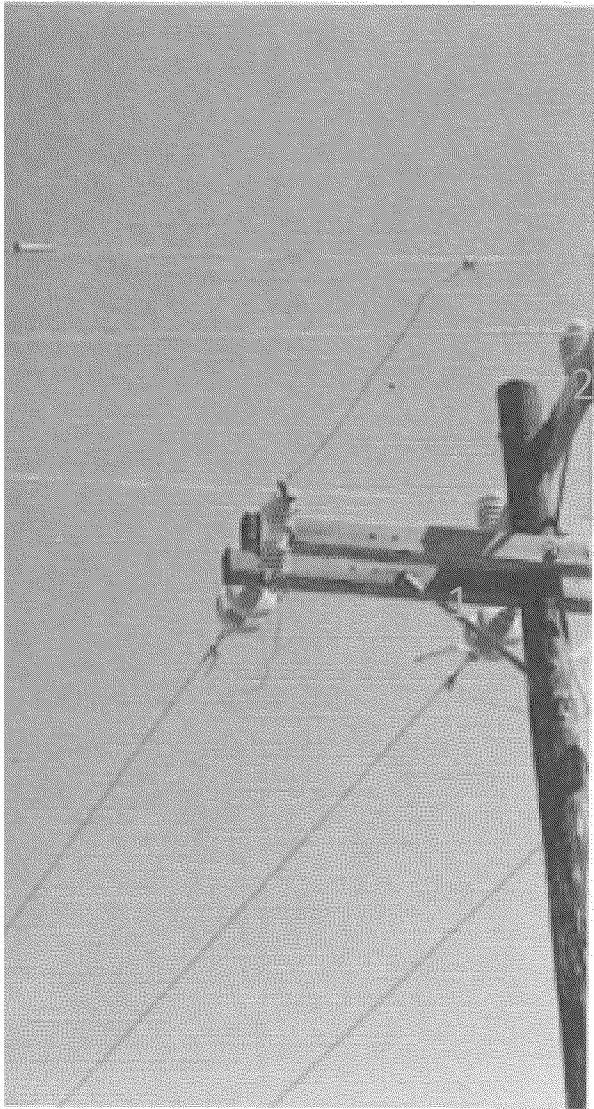


- 1 level with no equipment
- Service/secondary poles/guy poles
- Levels are defined as cross arms or other types of framing associated with primary/secondary circuitry. Transformers are also considered to be a level.



Pole Type 1 - Easy (cont.)

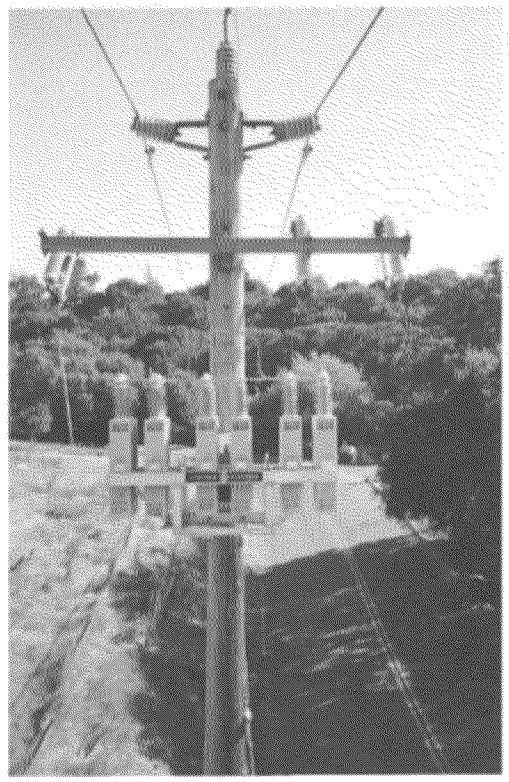




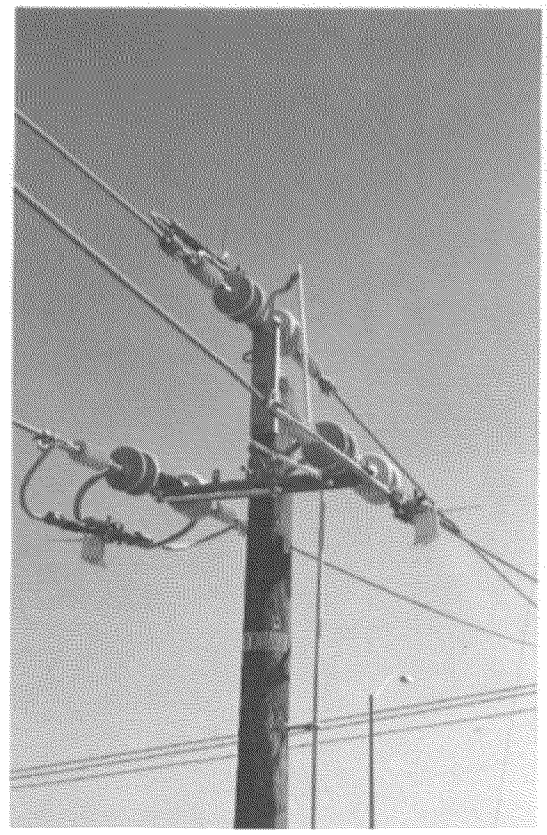
2 Levels

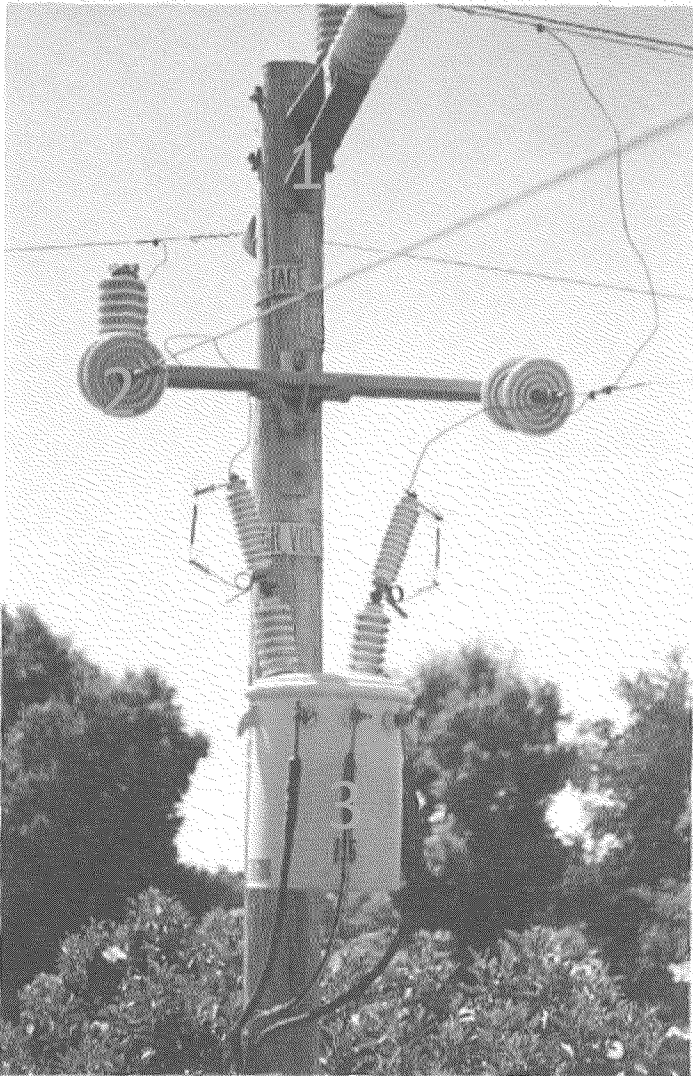
- 2 levels or type 2 equipment
- 1 level and/or equipment as defined below for type 2
- Type 2 equipment is defined as line cutouts/disconnects on a separate arm, line switches, fixed capacitor bank and single phase transformer. Cutouts/disconnects associated with a piece of equipment are considered to be part of the equipment installation.

1 Level + Type 2 Equipment



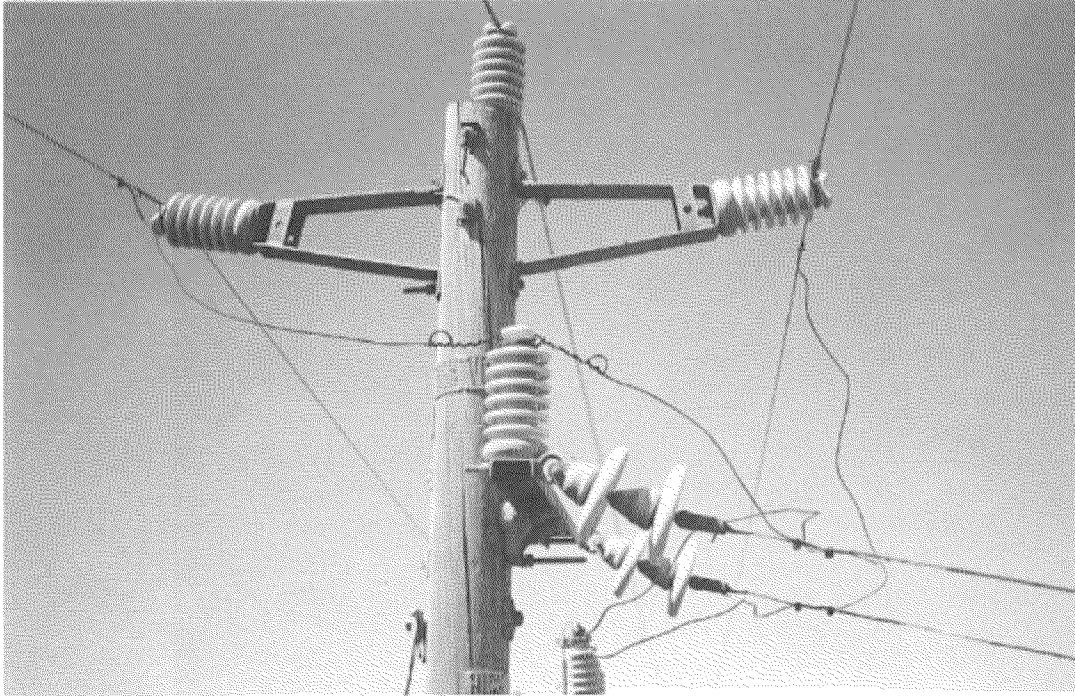
1 Level + Fixed Capacitor Bank



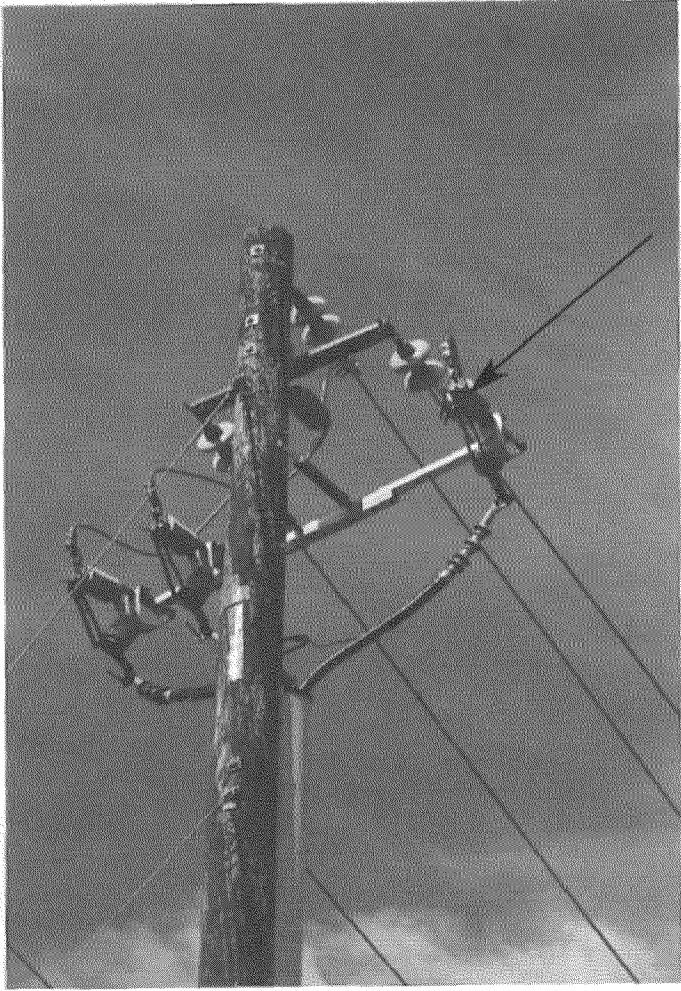


- 3 Levels
- Equipment as defined below for type 3
- Type 3 equipment is defined as reclosers, regulators, boosters, sectionalizers, switched capacitor banks, three phase and transformer banks.

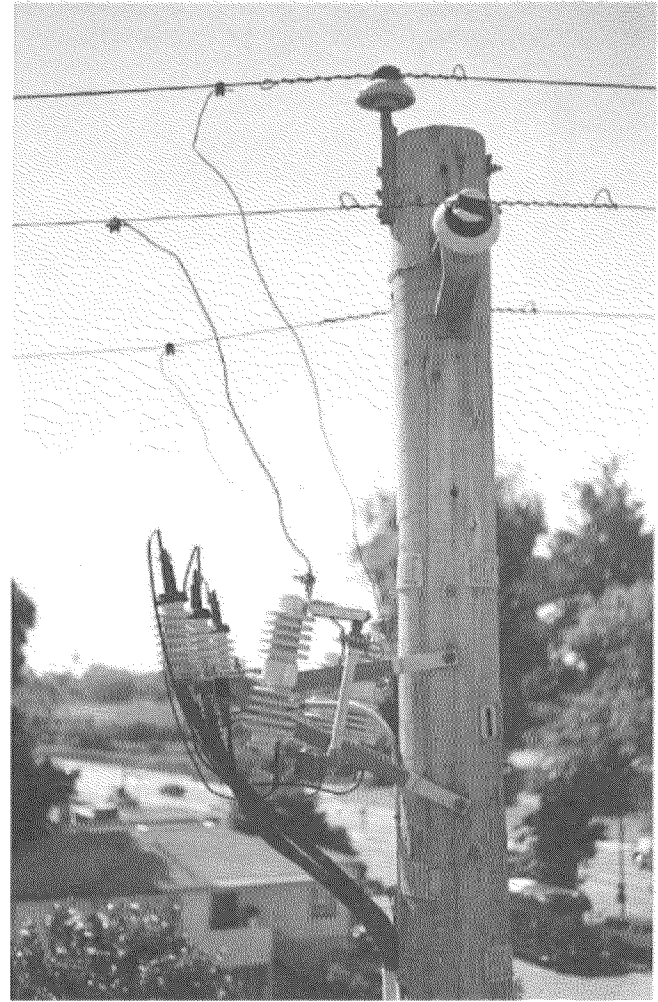
2 Level + 1 Transformer
Set in Place



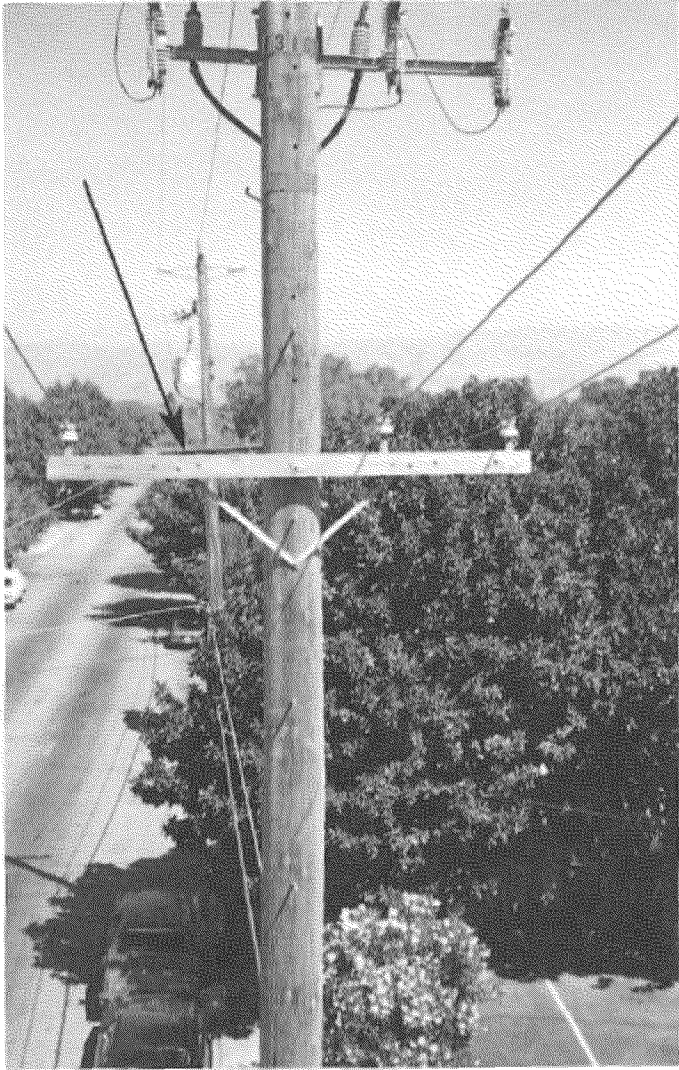
2 Levels
1 Transformer



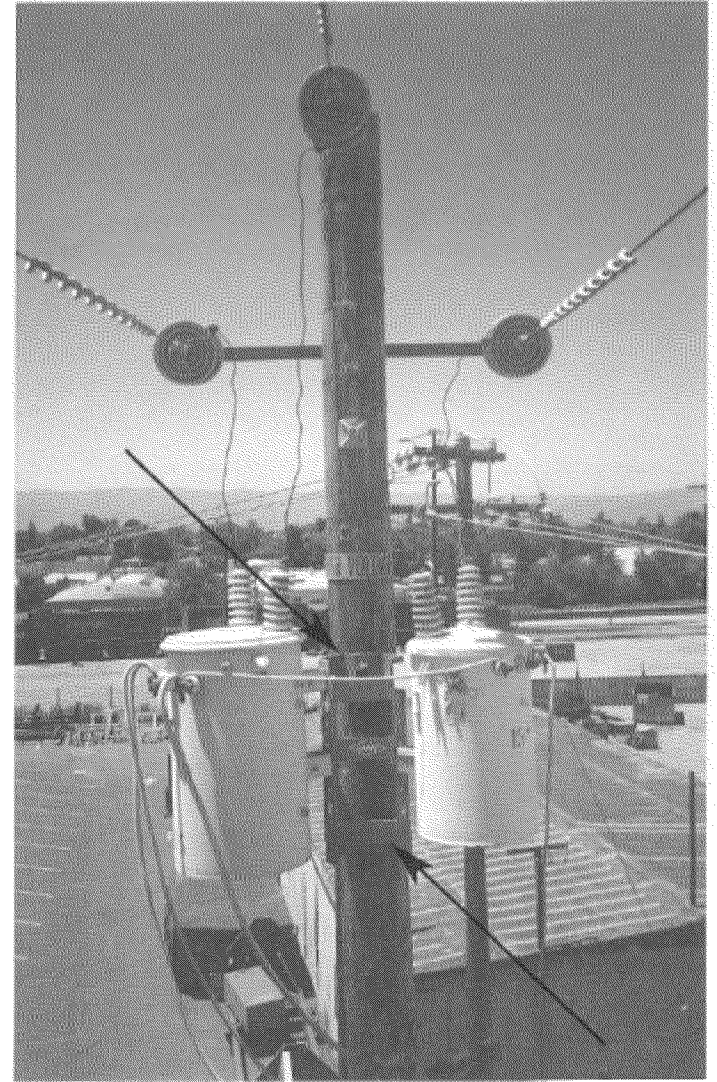
2 Levels with Primary Riser
Set in Place



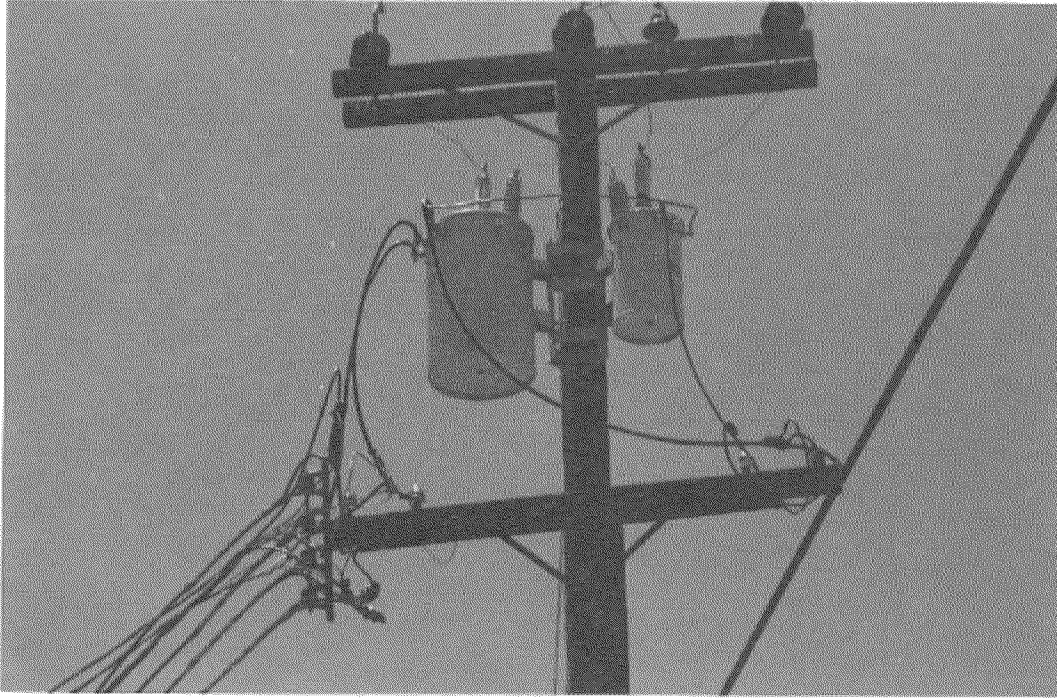
2 Levels
Set in Place



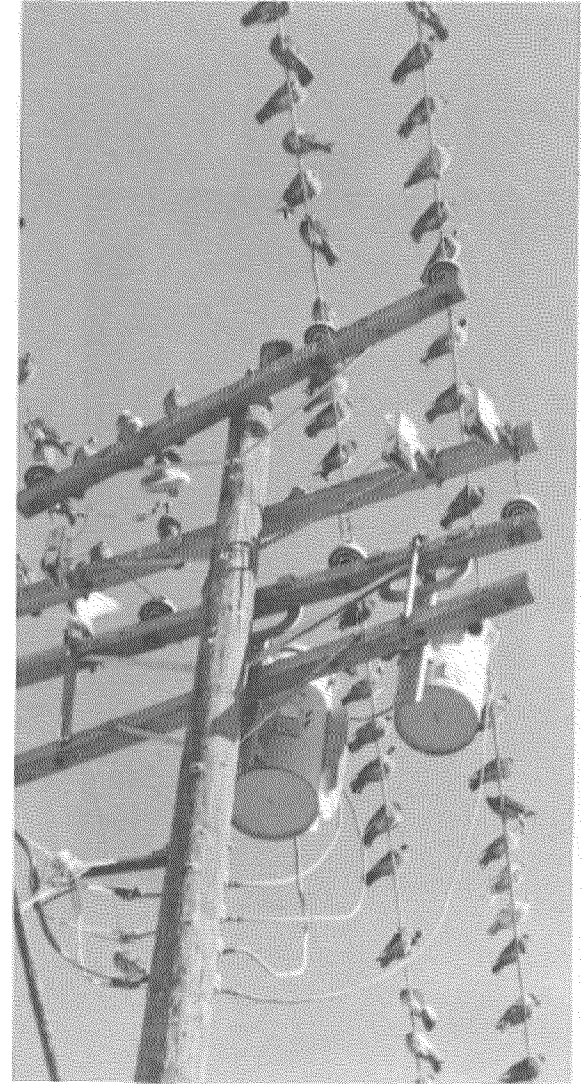
3 Levels
In Place



1 Level +
Transformer
Bank

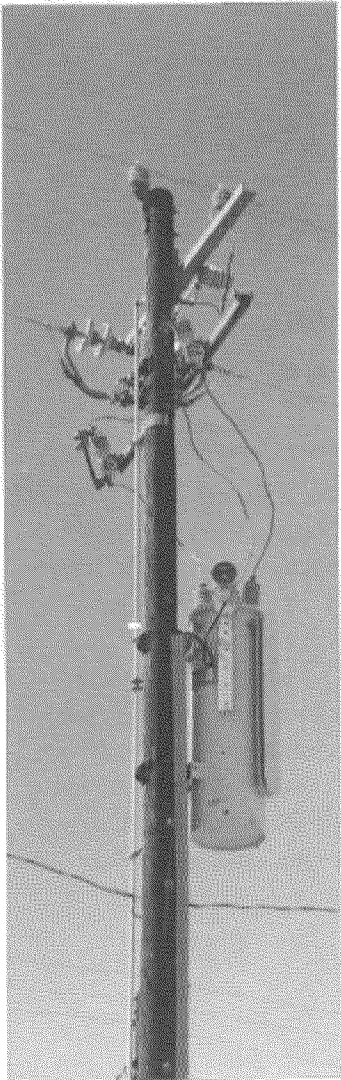


2 Levels + 2 Transformers

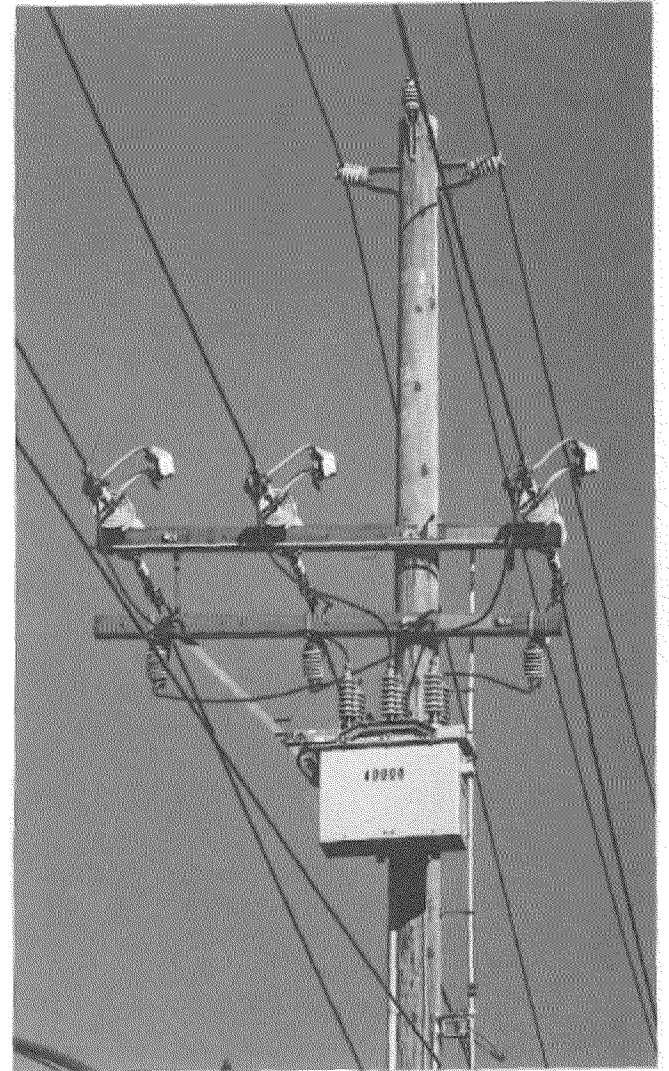


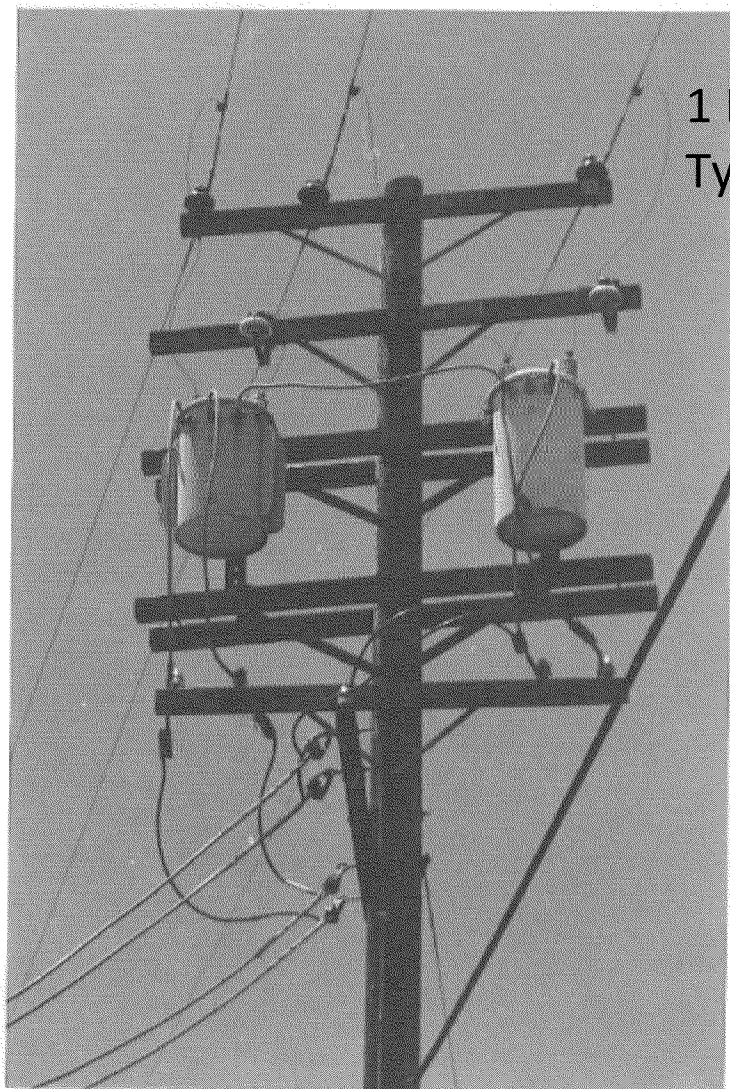
1 Level
Transformer Bank

Equipment Regulator
Type 3 Equipment

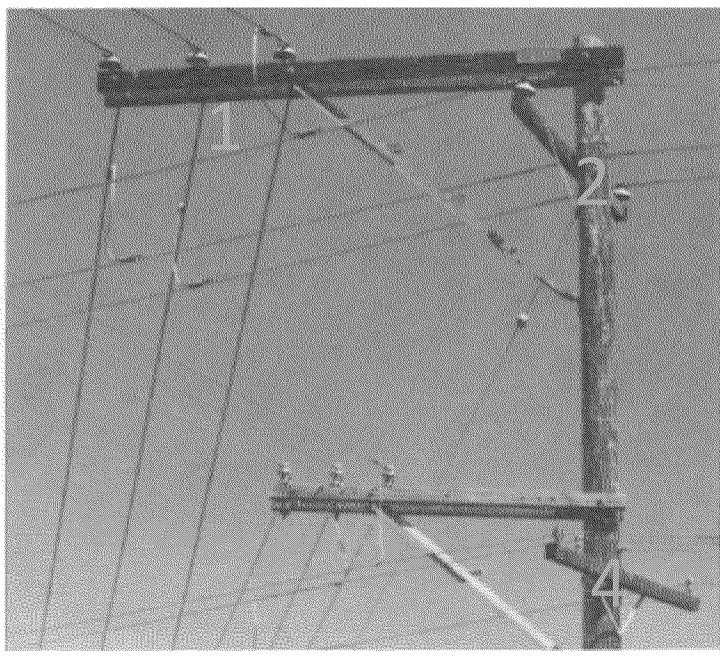


2 Levels plus Type 3
Equipment Recloser

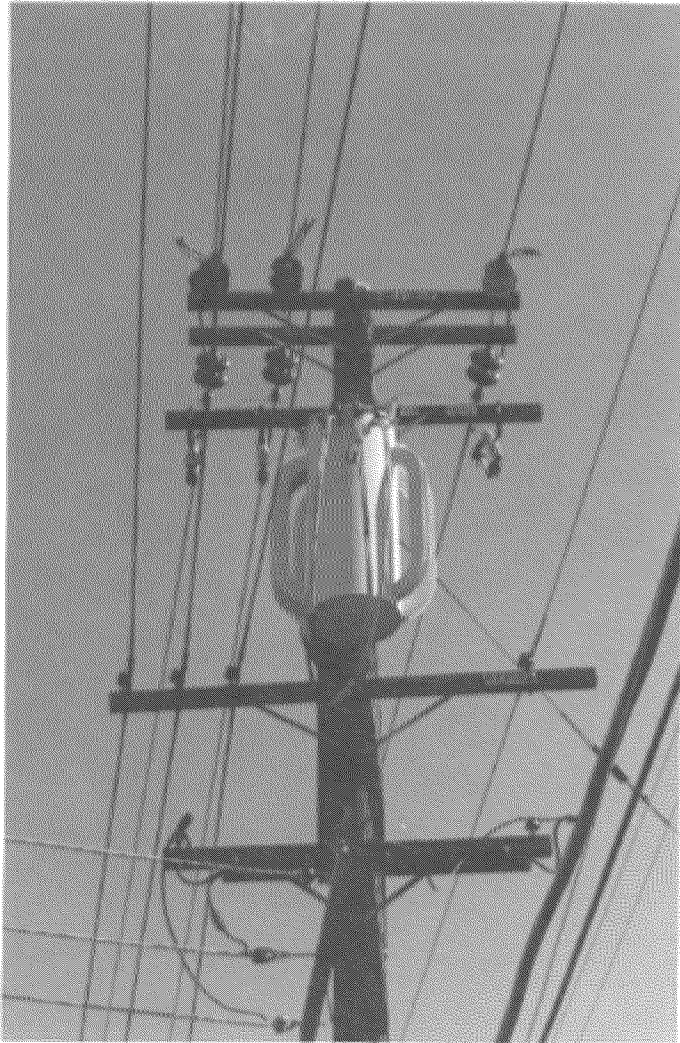




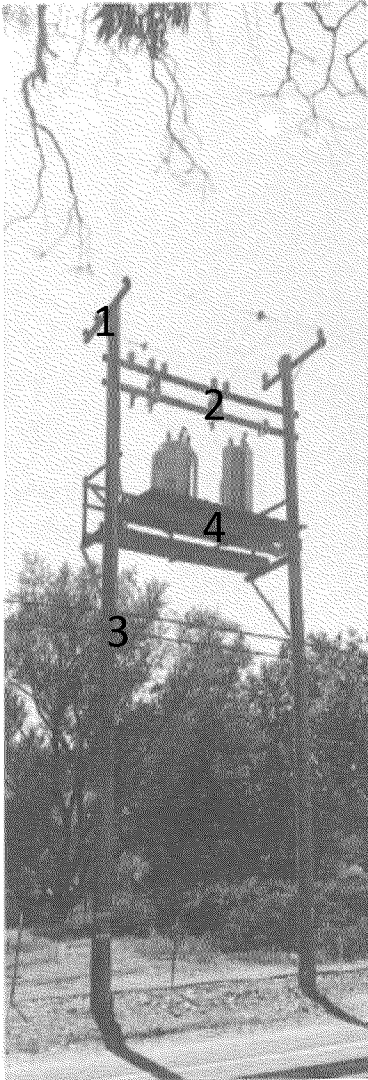
1 Level
Type 3 Equipment Transformer
Bank



- 4 Levels
- 3 Levels and type 2 or 3 equipment



3 Levels + 1 Transformer



- More than 4 Levels
- 4 Levels + Equipment Regulator
- Poles of unusual size. (Poles of unusual weight, Poles > 70ft. For example, 95 footers.)