

# Powering California Forward

CPUC Thought Leaders Series

**Fong Wan**

Senior Vice President, Energy Procurement  
Pacific Gas and Electric Company





# California, Outlier or Leader?

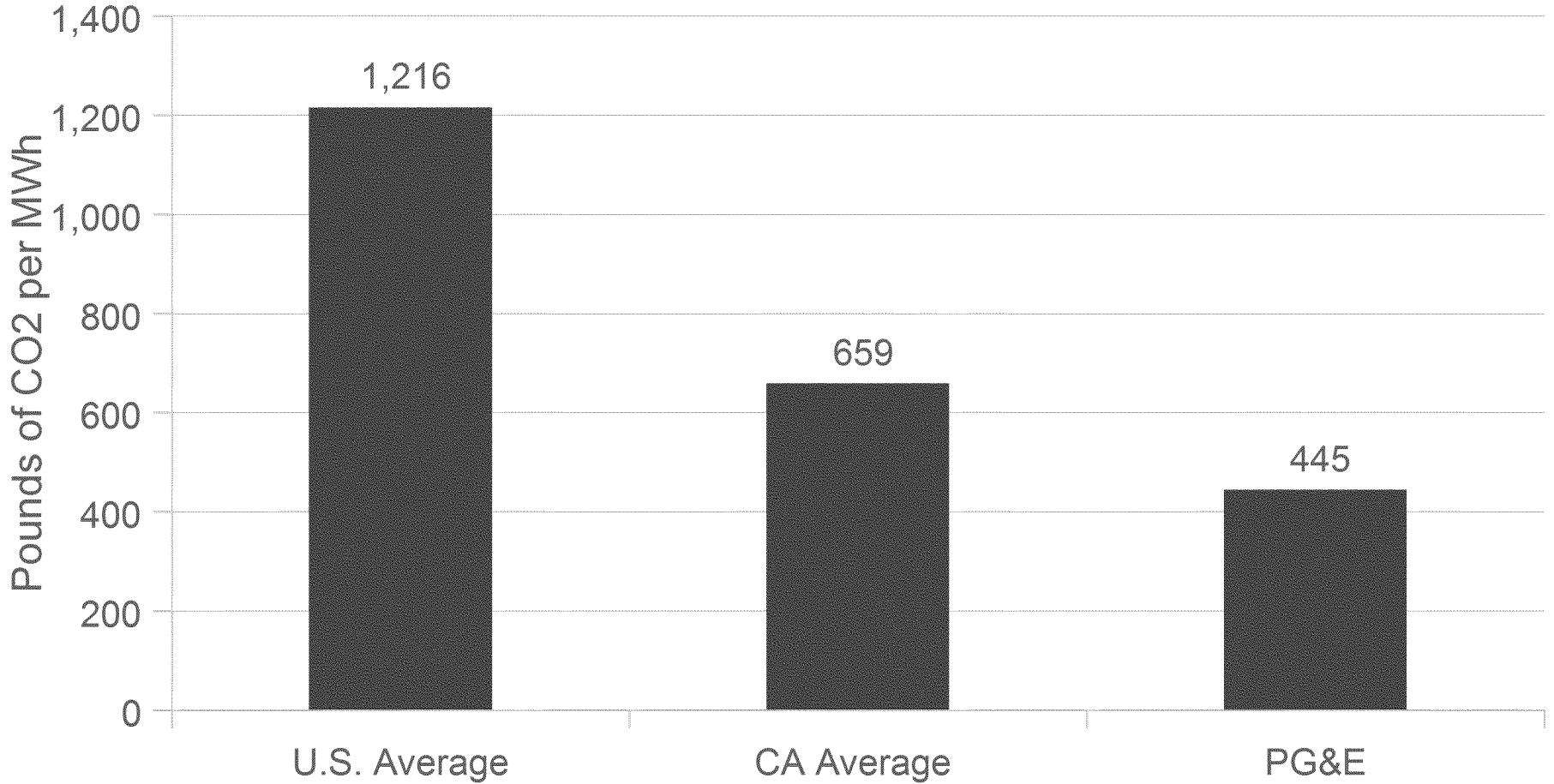


Approved by the Board of Directors on 11/11/2019



# PG&E: Delivering Clean Energy

## CO<sub>2</sub> Emissions for Delivered Electricity



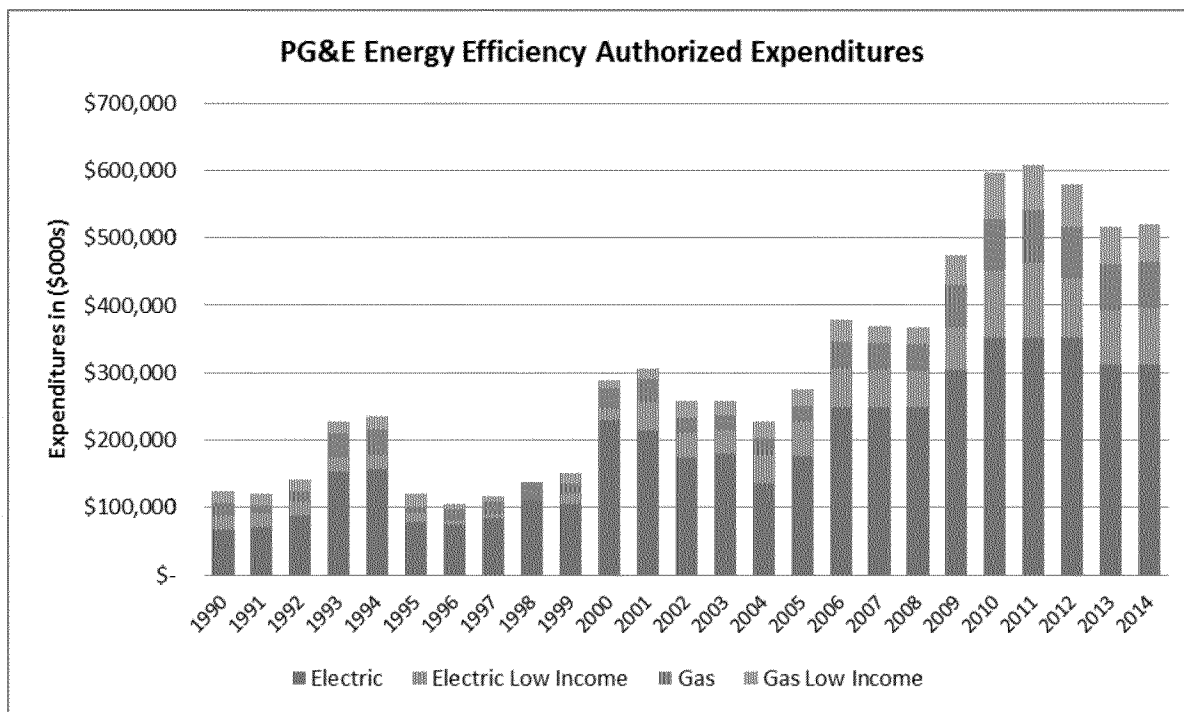
*Source: U.S. and CA averages, U.S. Environmental Protection Agency.*

*Source: The Climate Registry, a third party verification of greenhouse gas emissions data.*



# Energy Efficiency: Ingrained in the PG&E Culture

- Legislation enacted in 1974 to “reduce wasteful, inefficient ... consumption of energy.”
- Decoupling of natural gas sales in 1978; electric sales in 1982
- Shareholder incentive adopted in 1993
- Significant growth in funding for energy efficiency programs

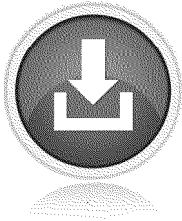






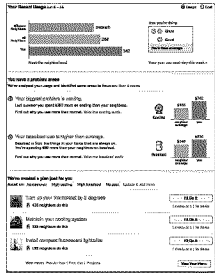
# PG&E Smart Grid Investments

## Engaged Consumers



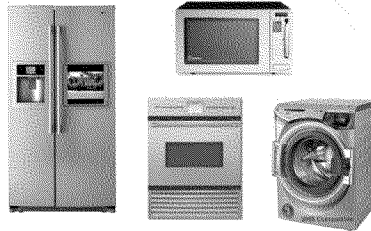
Green Button  
Download  
My Data<sup>®</sup>

Online Information

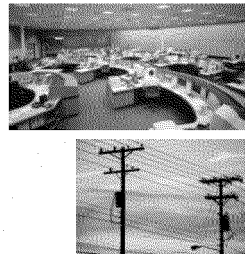


Home Energy Reports

## Smart Markets



Customer Energy Management

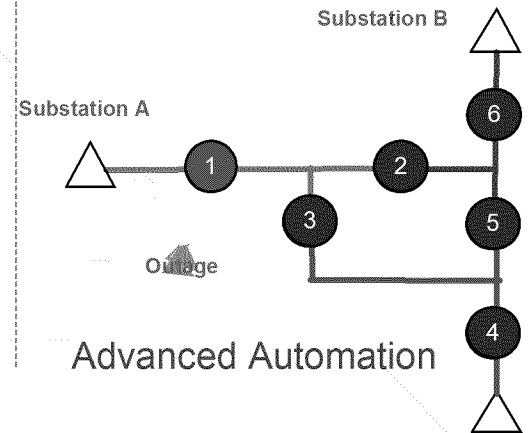


Automated Demand Response

## Smart Utility



Outage and Load Management



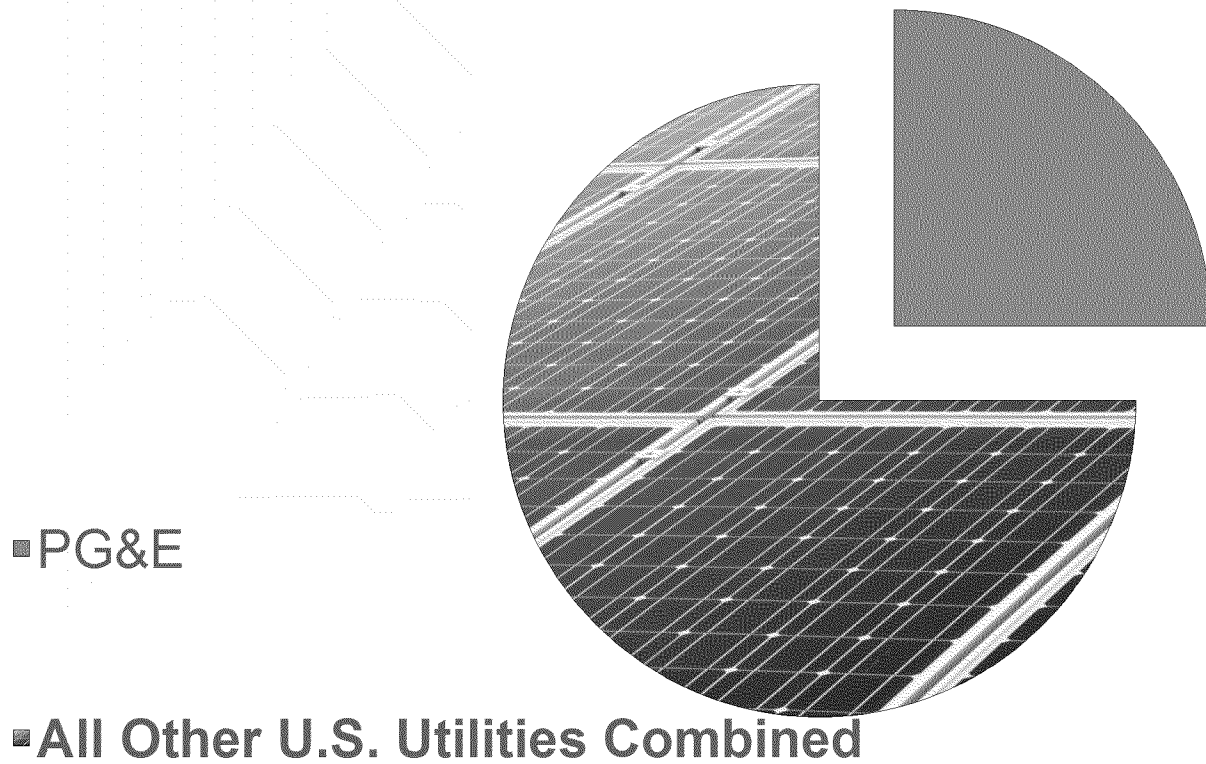
Advanced Automation

PG&E is using Smart Grid technologies to provide customers with benefits today



# PG&E is a Leader in Retail Solar PV

*One-fourth of customer solar installations in the U.S. are in PG&E's service territory*



*Source: Annual survey by the Solar Electric Power Association for 2012 (2013 results available June 2014).*