

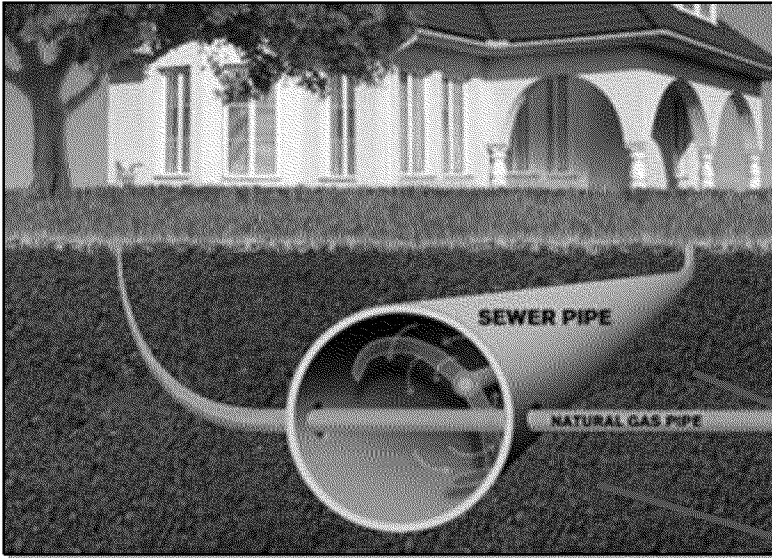
Cross Bores Inspections

Distribution Integrity Management

May, 2014

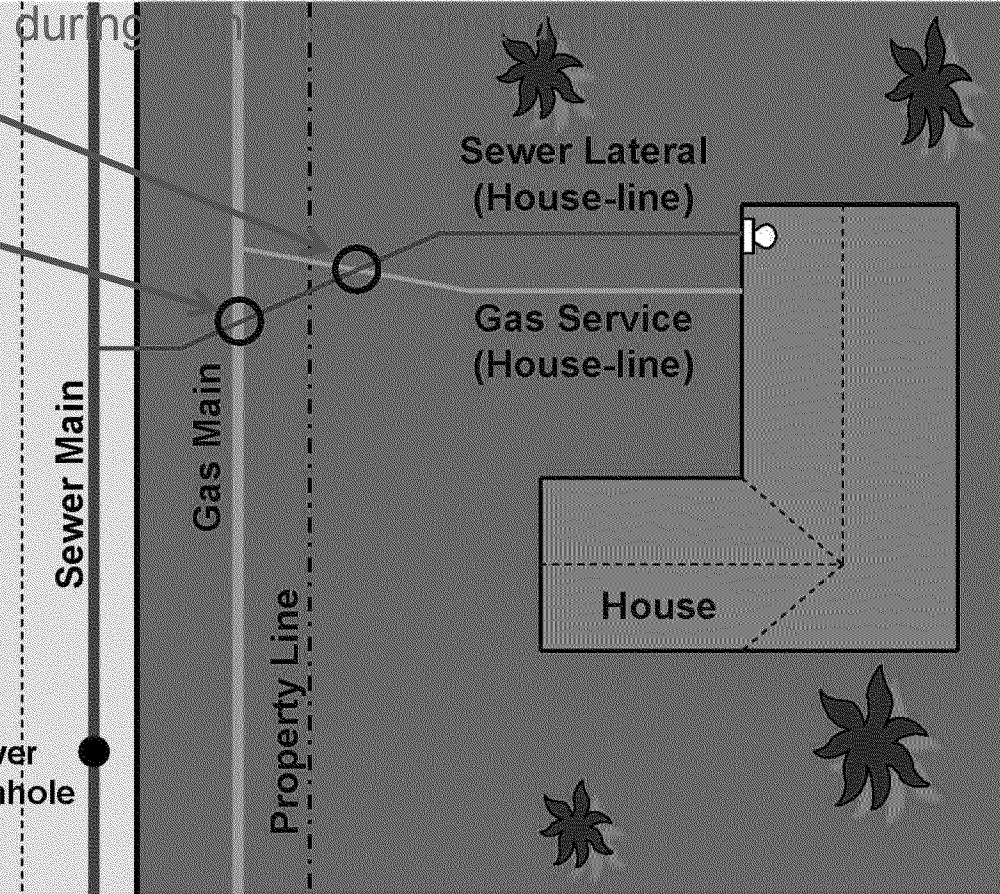


What is a Cross Bore?



What is a cross bore?

A cross bore is the inadvertent placement of a gas main or service through a sewer line. Sewer cross bores typically occur

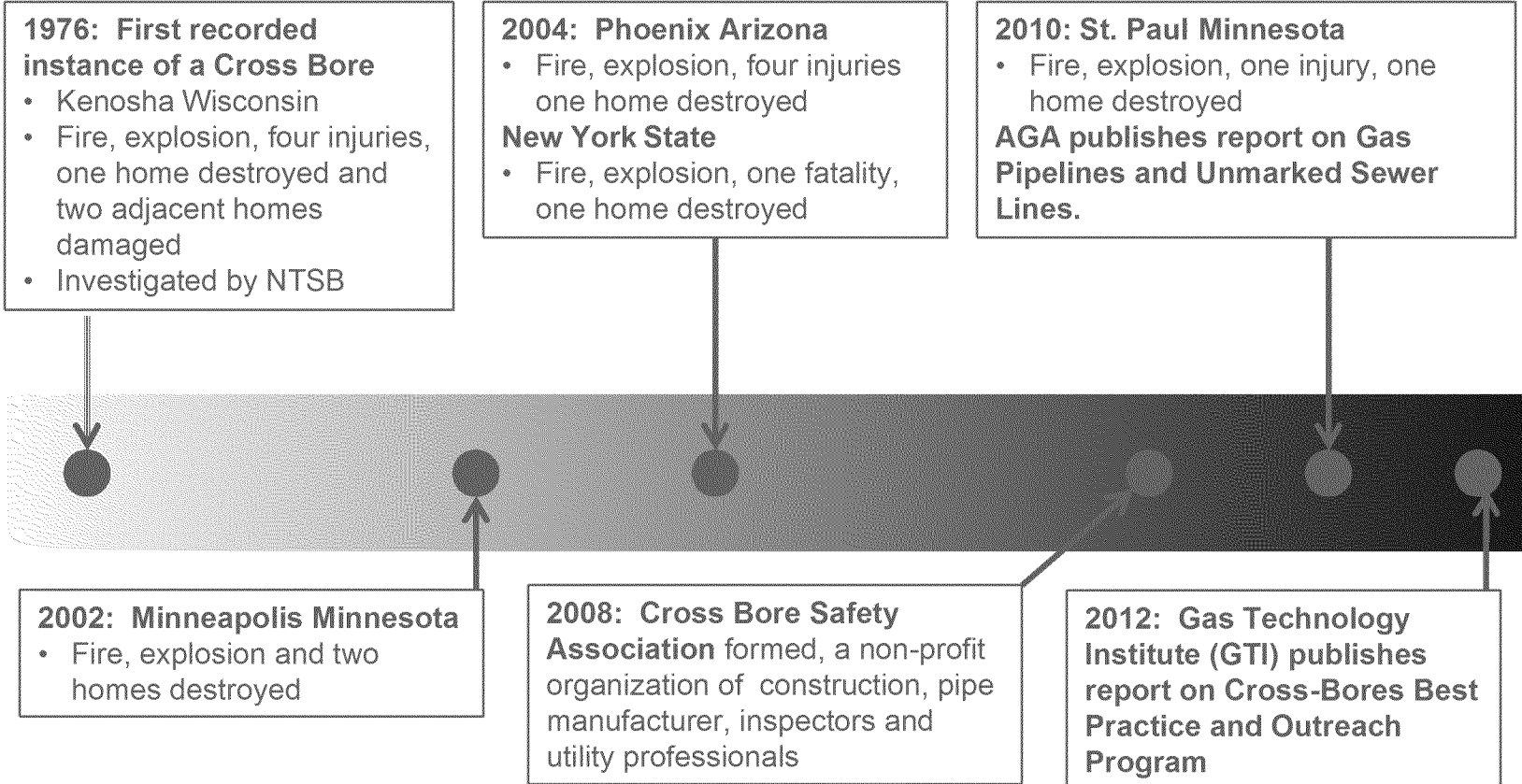


What can happen as a result of a cross bore?

The sewer line may become blocked and need to be cleaned by a plumber or the building owner with mechanical cleaning tools. This may cause the gas line to be cut which could cause a release of gas.



Cross Bores – An Industry Issue

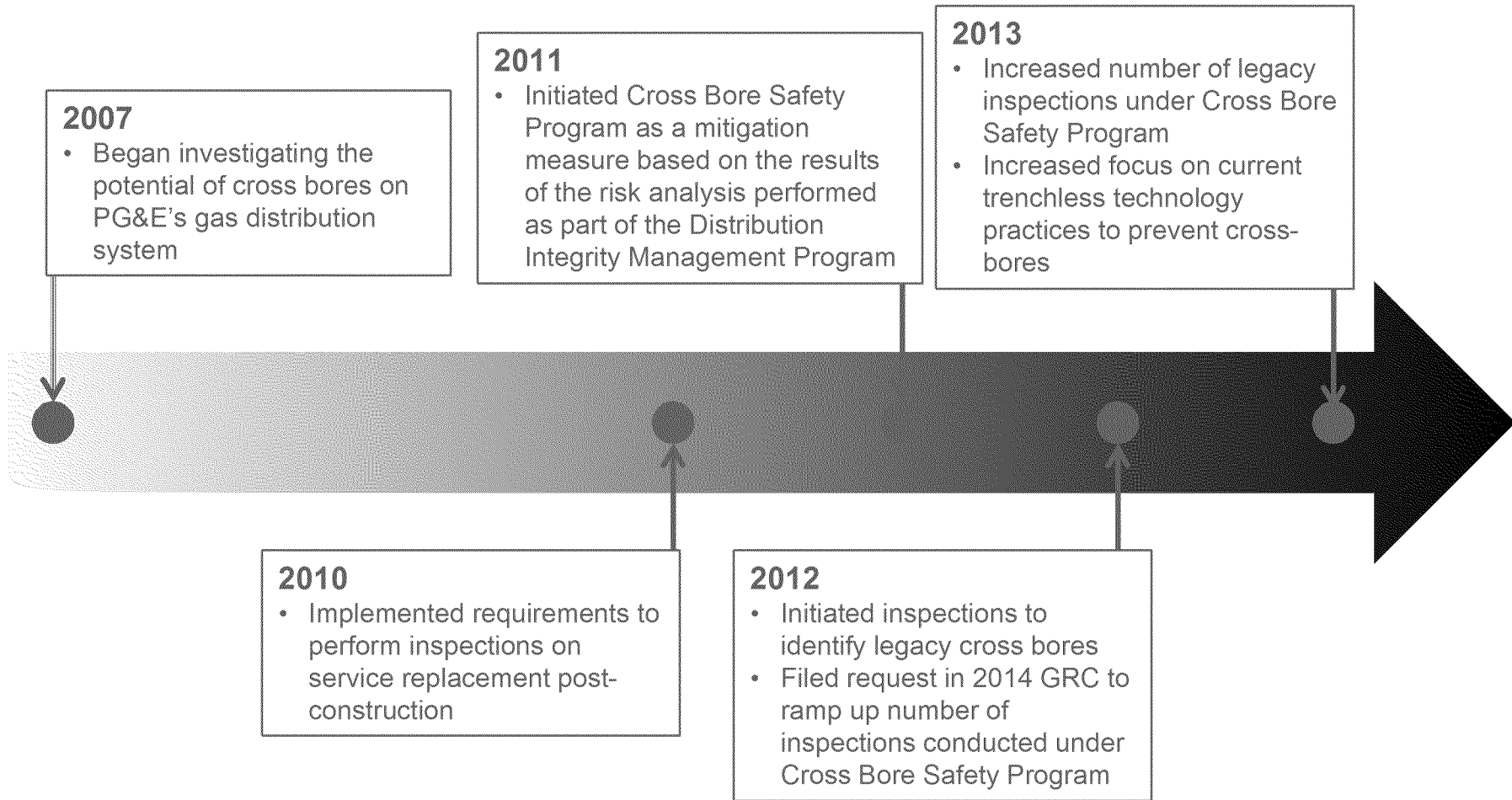


- Eighteen known cross bore incidents in U.S. since 2002¹
- Industry average cross bores estimated at 2-3 per mile of gas pipe and can be higher regionally, especially if sewer and gas lines are installed at the same depth²
- Incident in Minnesota resulted in a state mandated program to address cross bores³

¹ GTI "Mitigating the Risk of Cross-Bores", presentation to Northeast Gas Association, October 4, 2012
² Cross Bore Safety Association (CBSA), Legacy Cross Bores
³ Minnesota Department of Public Safety, State Fire Marshal and Pipeline Safety, Alert Notice, May 10, 2010



PG&E's History with Cross Bores⁴



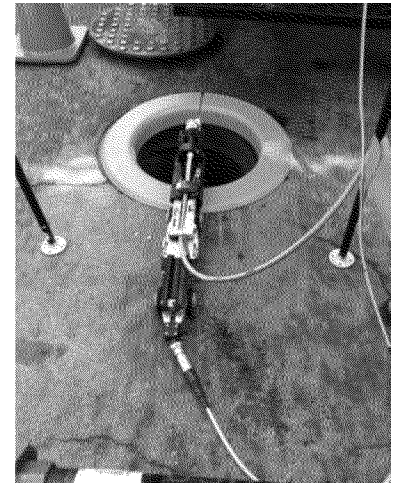
There have been 5 near hits since 2012 where cross bores were damaged and gas was released; however, the leak was mitigated before any property damage occurred.



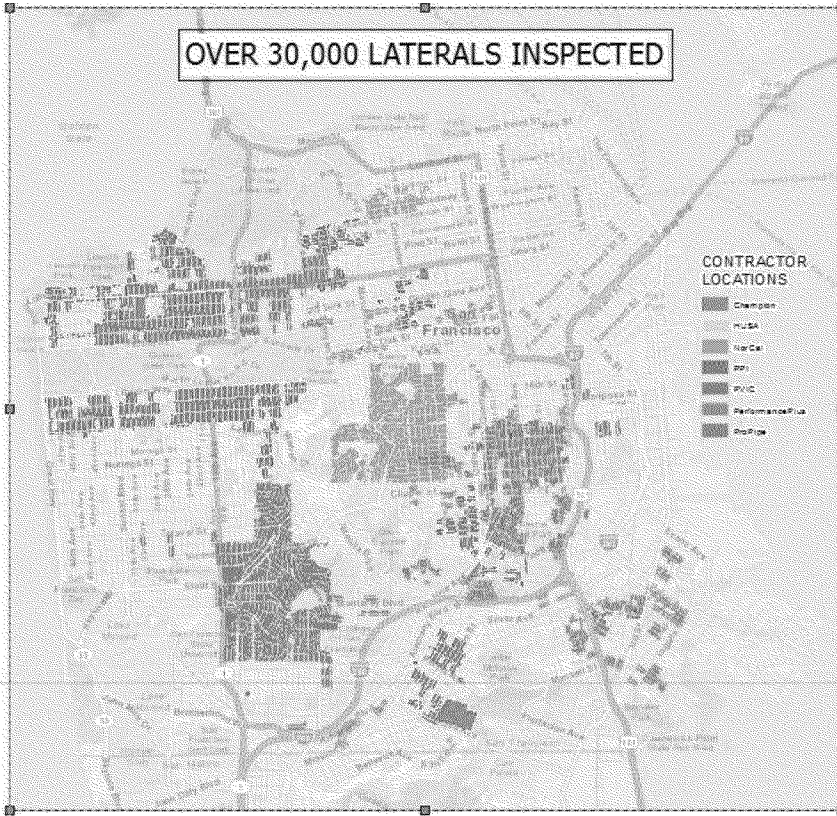
Inspection Methods

Camera equipment is either

- Inserted into a sewer manhole and launched up each individual sewer lateral
- Inserted through a toilet, trap, or cleanout at the house and pushed to the street

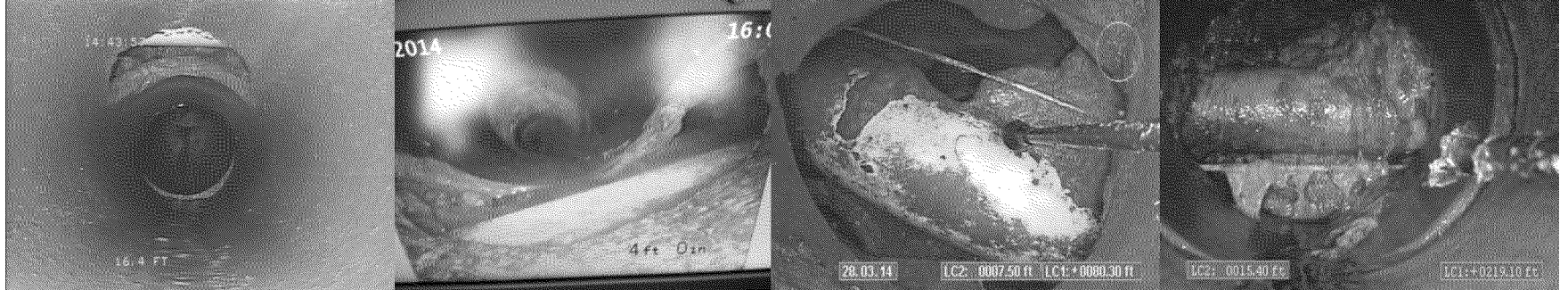


Tracking, Notification and Repair Process



When a cross bore is identified:

- Owner of sewer notified
- PG&E crews dispatched if blockage condition exists
- Gas line relocated out of sewer lateral
- Sewer repaired by licensed plumber
- Find rate is approximately 1 per 1,000 inspections or roughly 2 per mile of main, consistent with industry experience



- Materials distributed to key stakeholders explaining cross bores and requesting appropriate action when a cross bore is suspected.
- In 2012, PG&E sent safety brochures on Cross Bores to 12,500 sewer districts, public works agencies, plumbers, and equipment rental stores.
- In 2013, we completed two notifications totaling 25,000 brochures with an additional 283 mailings to sewer agencies and plumber unions.
- In 2014, in addition to our stakeholder mailings, we included cross bore information in March as a bill insert.

When Natural Gas Lines Intersect Sewer Lines
Safety Tips for Drain Cleaners, Sewer Cleaners, and Plumbers

CAUTION

Quando las tuberías de gas natural se intersectan con las tuberías de drenaje
Consejos de seguridad para plomeros, limpiadores de drenajes y limpiadores de alcantarillados

In a natural gas emergency call 911 and PG&E at 1-800-743-5000 immediately
En una emergencia de gas natural, llame al 911 y a PG&E al 1-800-743-5000 de inmediato

Safety Tips for Clearing Out a Sewer Lateral

The current practice involves sending a mechanical snare into utility lines that include, but are not limited to, the main, service, and vent lines. This snare, designed to remove a pipe, and sometimes sewer laterals on private property are not typically covered by underground facilities maps (UFGM) and can go undetected during digging. The unintended result is that a utility line can be damaged or blocked directly through a sewer lateral in what is known as a "cross bore." See photo.

A cross bore in the sewer lateral is separate from and used to vent the blockage. Because vent stacks are used to remove the blockage, gas can identify the utility line. For natural gas lines, the use of sewer lines not be immediately apparent and gas can migrate through the lateral and concentrate in sewer lines and nearby structures.

To prevent the potentially hazardous situation, consider the following:

- **Before Digging:** Look for signs of landscaping that could be causing the obstruction. If there are none, call the owner of the area to see if there are any records of the area that could show the location of the line. If you can't find the owner, call the utility to see if they have any records of the area.
- **During Digging:** Use the most reliable equipment beyond first, second and third, for the reason that they are not restricted to their use in other common situations.
- **After Digging:** Notify gas utility lines are typically placed in a trench and not backfilled or covered in place. Do the backfill when you withdraw it. Watch for bubbles escaping from the vent pipes of the cutting equipment or stand still for a few minutes to see if there is any gas odor or other gas detection equipment, if available.

If you suspect a gas leak, immediately evacuate all occupants and evacuate the area. Do not use a flame or anything electrical, or a spark create until you go. From a safe location call 911 and PG&E immediately at 1-800-743-5000.

Safety Tips for Drain Cleaners, Sewer Cleaners, & Plumbers

Check here for other safety topics as you read

Click here to view the full brochure on **cross bores** and **how to prevent them**

From natural gas leaks, call 911 and PG&E at 1-800-743-5000 immediately.

What is a cross bore?
A cross bore is a pipe that is installed in a trench and is not intended to be connected to the sewer lateral. It is often installed in a trench and is not intended to be connected to the sewer lateral. It is often installed in a trench and is not intended to be connected to the sewer lateral.

The brochure is in English and Spanish.

- It includes a picture of a cross bore.
- It includes a picture of a cross bore.
- It includes a picture of a cross bore.
- It includes a picture of a cross bore.

How to use this brochure

- Refer to this brochure before you start any digging or excavation work.
- Refer to this brochure before you start any digging or excavation work.
- Refer to this brochure before you start any digging or excavation work.
- Refer to this brochure before you start any digging or excavation work.

Safety Tips for Clearing Out a Sewer Lateral

Check here for other safety topics as you read

Click here to view the full brochure on **cross bores** and **how to prevent them**

From natural gas leaks, call 911 and PG&E at 1-800-743-5000 immediately.

What is a cross bore?
A cross bore is a pipe that is installed in a trench and is not intended to be connected to the sewer lateral. It is often installed in a trench and is not intended to be connected to the sewer lateral. It is often installed in a trench and is not intended to be connected to the sewer lateral.

How to use this brochure

- Refer to this brochure before you start any digging or excavation work.
- Refer to this brochure before you start any digging or excavation work.
- Refer to this brochure before you start any digging or excavation work.
- Refer to this brochure before you start any digging or excavation work.

Protecting in Your Community

What to do if you suspect a gas leak

PG&E is committed to your safety and the safety of your community. We will be performing safety inspections of your gas lines and your gas lines in your neighborhood.

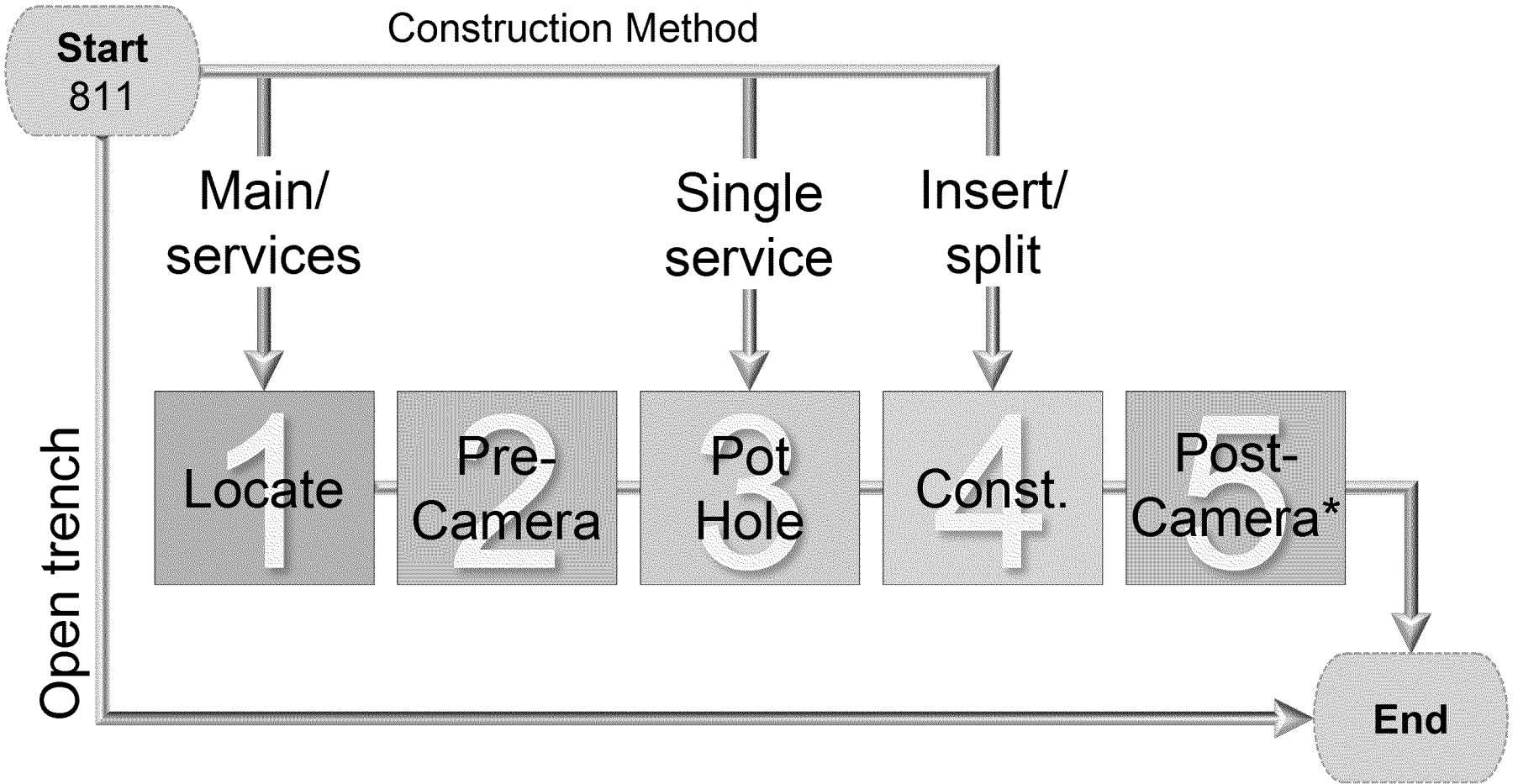
What to do if you suspect a gas leak

If you suspect a gas leak, immediately evacuate all occupants and evacuate the area. Do not use a flame or anything electrical, or a spark create until you go. From a safe location call 911 and PG&E immediately at 1-800-743-5000.



Cross Bore Prevention Process

(Currently being piloted in San Francisco and Peninsula regions)



* Perform before job closeout if pre-locate was completed.
Perform within 24 hours if NO pre-locate was completed.



Benchmark Results

Program	Benchmark Source	Comments
Legacy	American Gas Association Survey	PG&E provides public outreach consistent with the industry best practices. Not all utilities have legacy inspection programs.
Prevention	American Gas Association Survey Gas Technology Institute (GTI) Local and National Contractors	PG&E's new procedures implements best practices to ensure crossbores are not created as we require 100% post-construction inspection.
	Other Major US Utilities	PG&E is not only consistent with practices followed by other major US utilities but also meets best practices outlined in GTI's "Cross Bore Best Practices – Best Practices Guide".