

1
2
3
4
5
6
7
8
9
10
11
12
13
14
15
16
17
18
19
20
21
22
23
24
25
26
27
28

POWER PURCHASE AGREEMENT
FOR
AS-DELIVERED CAPACITY AND ENERGY
BETWEEN
MONTEREY REGIONAL WATER POLLUTION CONTROL AGENCY
AND
PACIFIC GAS AND ELECTRIC COMPANY

MAY 1984

1 (b) The scheduled operation date when Seller estimates
2 first delivery of electric energy from the Facility to
3 PGandE is July 1989. At the end of each calendar quarter
4 Seller shall give to PGandE written notice of any change in
5 the scheduled operation date.
6

7 (c) To avoid exceeding the physical limitations of the
8 interconnection facilities, Seller shall limit the
9 Facility's actual rate of delivery into the PGandE system to
10 2,000¹ kW.
11

12 (d) The primary energy source for the Facility is
13 biogas.
14

15 (e) If Seller does not begin construction of its
16 Facility by July 1986, PGandE may reallocate the existing
17 capacity on PGandE's transmission and/or distribution system
18 which would have been used to accommodate Seller's power
19 deliveries to other uses. In the event of such
20 reallocation, Seller shall pay PGandE for the cost of any
21 upgrades or additions to PGandE's system necessary to
22 accommodate the output from the Facility. Such additional
23 facilities shall be installed, owned, and maintained in
24 accordance with the applicable PGandE tariff.
25

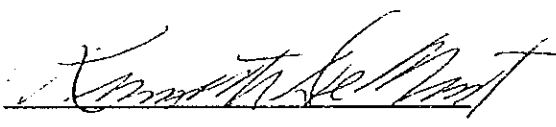
26
27
28 ¹ The appropriate number will be inserted upon completion of an
interconnection study.

1
2
3
4
5
6
7
8
9
10
11
12
13
14
15
16
17
18
19
20
21
22
23
24
25
26
27
28

IN WITNESS WHEREOF, the Parties hereto have caused this Agreement to be executed by their duly authorized representatives.

MONTEREY REGIONAL WATER POLLUTION CONTROL AGENCY

PACIFIC GAS AND ELECTRIC COMPANY

BY: 

BY: 
H. M. HOWE

Kenneth P. De Ment
(Type Name)

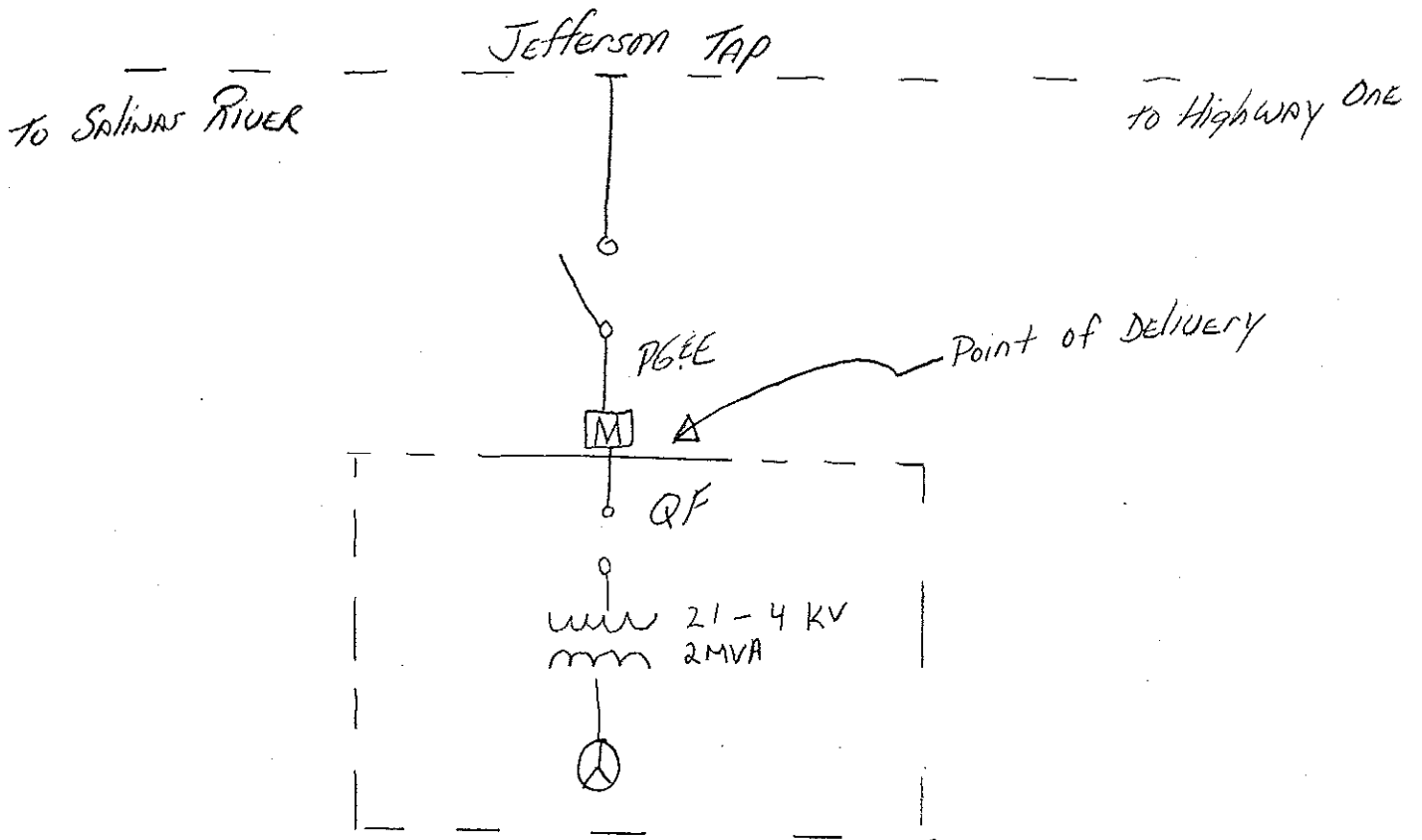
Chief -
TITLE: Siting Department

TITLE: Agency Manager

DATE SIGNED: June 24, 1985

DATE SIGNED: July 8, 1985

D-2 POINT OF DELIVERY LOCATION SKETCH



1
2 D-3 INTERCONNECTION FACILITIES FOR WHICH SELLER IS RESPONSIBLE

3 Seller is responsible for installing, maintaining, and if necessary, replacing the interconnection
4 facilities as generally described below:

- 5 1. Pole top primary metering installation cluster mounted.
- 6 2. Generator relays:
- 7 a. over and under voltage relays.
 - 8 b. over and under frequency relays.
 - 9 c. over current relay with voltage restraint.
 - 10 d. synchronizing relay.

11
12
13
14
15
16
17
18
19
20
21
22
23
24
25
26 In addition to the interconnection facilities listed above, and at Seller's request, PG&E will install
27 certain interconnection facilities as Special Facilities. Although responsible for operating and
28 maintaining Special Facilities, PG&E will do so at Seller's expense pursuant to the Special Facilities
Agreement between Seller and PG&E.