



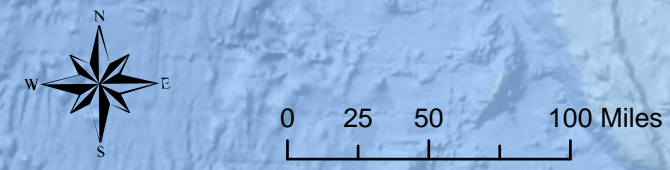
# CPUC Fire-Threat Map

Adopted by the California Public Utilities Commission  
(Revised on August 19, 2021)

The data portrayed in the CPUC Fire-Threat Map were developed under Rulemaking 15-05-006, following procedures in Decision (D.) 17-01-009, revised by D.17-06-024, which adopted a work plan for the development of a utility High Fire-Threat District (HFTD) for application of enhanced fire safety regulations. In accordance with the above-decisions, the HFTD Map is a composite of two map products. One of those map products is this CPUC Fire-Threat Map. The CPUC Fire-Threat Map depicts areas where enhanced fire safety regulations found in Decision 17-12-024 will apply. The final CPUC Fire Threat Map was submitted to the Commission via a Tier 1 Advice Letter that was adopted by the Commission's Safety and Enforcement Division (SED) with a disposition letter on January 19, 2018. Subsequently, the final CPUC Fire Threat Map has been modified by the Commission. All data and information portrayed on the CPUC Fire-Threat Map are for the expressed use called out in D.17-12-024. Any other use of this map is not the responsibility of nor endorsed by the Commission or its supporting Independent Review Team.

**Fire-Threat Areas**

- Tier 3 - Extreme
- Tier 2 - Elevated
- County



For more information about the data and map depicted, or other matters related to Utility wildfire safety, please contact Terrie Prosper at [Terrie.Prospier@cpuc.ca.gov](mailto:Terrie.Prospier@cpuc.ca.gov) or visit website at <https://www.cpuc.ca.gov/industries-and-topics/wildfires/fire-threat-maps-and-fire-safety-rulemaking>.  
 Basemap is sourced from Esri World Ocean.  
 Version 3 revised on August 19, 2021 is a result of Resolution SED-4 and an update to CAL FIRE's tier 1 of the High Hazard Zones.