

**GAS OPERATIONS  
STRENGTH TEST PRESSURE REPORT  
(FOR PIPE FACILITY OPERATIONS OVER 100 PSIG)**

SHEET 1 OF 1

<b>PART I - DESIGN DATA - (TO BE PREPARED BY PROJECT ENGINEER OR GAS SYSTEM DESIGN DEPT.)</b>												
DIST. MAIN OR LINE NO. 4" OFM		DIVISION EAST BAY		DISTRICT DIABLO		W.O. OR G.M. NO. 42692B		DATE W.O. OR GM APPROVED				
DESCRIPTION OF JOB - INCLUDE REFERENCE DRAWING NUMBERS REPLACE TEMPORARY 4" MAIN WITH PERMANENT 4" OFM AT THE REPAIRED SLIDE AREA IN [REDACTED] LASAVETTE												
LOCATION CLASS 3		DESIGN FACTOR .50		THIS TEST 170		DESIGN PRESSURE - THIS SECTION (FUTURE DESIGN PRESSURE) 170		DESIGN PRESSURE - THIS SECTION (FUTURE DESIGN PRESSURE) 175				
SPECIAL PROTECTION REQUIRED WHERE COVER OVER PIPE IS LESS THAN SPECIFIED IN PAR. 192.327-G, O. 112 - SEE PAR. 141.2(B) GIVE M.P. & REF. DWG. NO. FOR EACH LOCATION. N/A												
STATIC HEAD DUE TO ELEVATION DIFFERENCE (WHERE APPLICABLE)				MAX. ELEVATION MIN. ELEVATION DIFF.		STATIC HEAD CALCULATION FOR WATER OTHER (SPECIFY)		0.433 X DIFF. = X DIFF.		PSIG		
PIPE SIZE		PIPE SPECIFICATION			% OF S.M.Y.S.			PRESS. TO GIVE 90% S.M.Y.S.	FOOTAGE TO BE TESTED	VERIFIED IN FIELD		
O.D.	W.T.	API GR.	ERW.	DSAW.	SEAMLESS	VERIFIED IN FIELD	AT DESIGN PRESS.	AT MIN. TEST PRESS.	AT MAX. TEST PRESS.	PRESS. TO GIVE 90% S.M.Y.S.	FOOTAGE TO BE TESTED	VERIFIED IN FIELD
4.5	.156	API 5L	GR.B.	ERW	N/A.	7.2	10.8	15.0	2184	273'	W.K.	
MINIMUM PRESSURE FOR TEST				263		PSIG		TEST FLUID TO BE USED. NITROGEN		MINIMUM TEST DURATION UNDER 30% S.M.Y.S. (1 HR. MIN.) 30% S.M.Y.S. & OVER (8 HR. MIN.) PREINSTALLATION TEST (SEE 192.505(B) GO 112)		ONE HRS.
MAXIMUM PERMISSIBLE TEST PRESSURE				363		PSIG						
PREPARED BY R. HOLMBERG		DATE 4-4-83		FOR INFORMATION OR CHANGES, CALL D. LEONARD		DATE 4-6-83						

<b>PART II - TEST DATA - TO BE PREPARED BY PERSON SUPERVISING TEST AT TIME OF TEST.</b>						<b>NOTE: MINIMUM TEST PRESSURE AND DURATION ARE NOT TO BE CHANGED WITHOUT WRITTEN APPROVAL.</b>					
* TIME AND DATE REACHED TEST PRESSURE 11 <sup>10</sup> HRS. 4/20/83		ELEVATION AT TEST POINT NA		INDICATED TEST PRESSURE (1) 302		PSIG.					
TIME AND DATE TEST ENDED 12 <sup>10</sup> HRS. 4/20/83		MAX. ELEVATION IN TEST SECTION NA		TEST PRESSURE AT MAX. ELEVATION (2) 302		PSIG.					
ACTUAL DURATION OF TEST 1 HR.		MIN. ELEVATION IN TEST SECTION NA		TEST PRESSURE AT MIN. ELEVATION (3) 302		PSIG.					
TEST FLUID USED NITROGEN		PIPE SPEC. VERIFIED (SEE PART I) W.K.		PIPE FOOTAGE VERIFIED (SEE PART I) W.K.							
MAKE, RANGE & SERIAL NO. OF RECORDING GAUGE ASHROFT #1003		DATE LAST CALIBRATION 4/1/83		MAKE, RANGE & SERIAL NO. OF DEAD-WEIGHT TESTER RECORDING GAUGE #86949, Foxboro #500		DATE LAST CALIBRATION 8/3/82					
TEST SUPERVISED BY Gauge & Kennedy				APPROVED BY J.H. [Signature]				DATE 4-20-83			

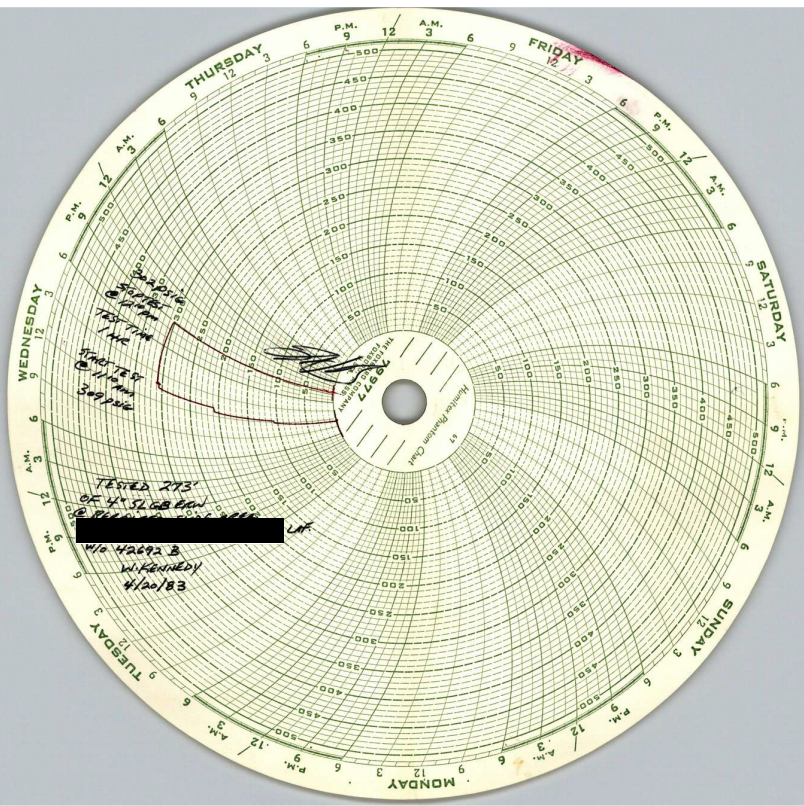
**PUT SCHEMATIC SKETCH ON BACK OF THIS SHEET:**

SHOW LOCATION OF FACILITY TESTED, MIN. & MAX. ELEVATION IN FEET, MILE POINTS, VALVE NUMBERS AND INCORPORATED AREAS. USE AN ADDITIONAL SHEET IF NECESSARY (SHOW REFERENCE NUMBERS ON FACE OF ALL DRAWINGS AND ATTACHMENTS). FOR STATION PIPING, FABRICATED UNITS AND SHORT SECTION OF PIPE, ALSO SHOW A DETAILED SKETCH OF EACH ASSEMBLY TESTED.

**DISTRIBUTION**

DIST. GAS SUPT.-JOB FILE  
DIV. GAS SUPT.  
GC GAS - ASSIGNED JOBS  
GAS SYSTEM DESIGN (2)  
PLANT ACCTS. (WITH FOREMAN'S COPY OF JOB)  
PIPELINE HISTORY FILE  
#REPORT FAILURES UNDER TEST TO GAS SYSTEM DESIGN AND GAS DISTRIBUTION DEPT'S.

- (1) LOWEST PRESSURE ON TEST GAUGE AT ANY TIME DURING TEST.  
(2) SUBTRACT STATIC HEAD DUE TO ELEVATION DIFFERENCE (BETWEEN TEST PT AND MAX. ELEVATION) FROM INDICATED TEST PRESSURE.  
(3) ADD STATIC HEAD DUE TO ELEVATION DIFFERENCE (BETWEEN TEST PT AND MIN. ELEVATION) TO INDICATED TEST PRESSURE.



Sample  
 started  
 @ 11 AM  
 Test time  
 1 hr  
 5:00 PM  
 @ 11 AM  
 3:00 PM

TESTED 273  
 OF 4" SLGB RAD  
 @ 11 AM

W/0 42692 B  
 W. KENNEDY  
 4/20/83

THE NATIONAL WEATHER SERVICE  
 1997  
 NATIONAL WEATHER DATA