

**PG&E**  
**GAS OPERATIONS**  
**STRENGTH TEST PRESSURE REPORT**  
 (FOR PIPE FACILITIES OPERATIONS OVER 100 PSIG)

**PART I - DESIGN DATA - (TO BE PREPARED BY PROJECT ENGINEER OR GAS SYSTEM DESIGN DEPT.):**

DIST. MAIN OR LINE NO.	DIVISION	DISTRICT	W.G. OR S.M. NO.	DATE W.O. OR SM APPROVED
------------------------	----------	----------	------------------	--------------------------

DESCRIPTION OF JOB - INCLUDE REFERENCE DRAWING NUMBERS  
**UPDATING 2800' OF G.D.E.M. [REDACTED]**

LOCATION CORN	DESIGN FACTOR (F)	PRESENT RATE OF FLOW (PSIG)	MAOP TO BE ESTABLISHED BY THIS TEST	DESIGN PRESSURE - THIS SECTION (FUTURE DESIGN PRESSURE)
<b>3</b>	<b>.50</b>	<b>338</b>	<b>338</b>	<b>338</b>

SPECIAL PROTECTION REQUIRED WHERE COVER OVER PIPE IS LESS THAN SPECIFIED IN PAR. 182.227 - G. D. 112 - SEE PAR. 141.208) GIVE M.P. & REF. DWG. NO. FOR EACH LOCATION.

STATIC HEAD DUE TO ELEVATION DIFFERENCE (WHERE APPLICABLE)	MAX. ELEVATION	MIN. ELEVATION	DIFF.	STATIC HEAD CALCULATION FOR WATER	G.433 X DIFF.	PSIG
	<b>625</b> FT.	<b>575</b> FT.	<b>50</b> FT.		<b>-</b>	<b>12</b>

PIPE SIZE		PIPE SPECIFICATION			% OF S.M.Y.S.			PRESS. TO GIVE 90% SMYS	FOOTAGE TO BE TESTED	VERIFIED IN FIELD
O.D.	W.T.	API, GR. ERW, OS&W, SEAMLESS	VERIFIED IN FIELD	AT DESIGN PRESS.	BY MIN. TEST PRESS.	AT MAX. TEST PRESS.				
<b>6.625</b>	<b>.280</b>	<b>API 5L GR. B, SMLS 35,000</b>	<b>100%</b>	<b>11.4</b>	<b>17.1</b>	<b>26.5</b>	<b>2662</b>	<b>2800</b>	<b>100%</b>	

MINIMUM PRESSURE FOR TEST @ MAX. ELE.	PSIG	TEST FLUID TO BE USED.	MINIMUM TEST DURATION UNDER 90% SMYS (1 HR. MIN.)	HRS.
<b>507</b>		<b>WATER</b>	<b>30% SMYS &amp; OVER (8 HR. MIN.)</b>	<b>1</b>
MAXIMUM PERMISSIBLE TEST PRESSURE @ MIN. ELE.		PSIG	PREINSTALLATION TEST (SEE 182.505(B) GO 112)	
<b>623</b>				

PREPARED BY **T. INMAN** DATE **8-5-83** FOR INFORMATION OR CHANGE CALL **D. LEWIS** DATE **7-7-83**

**PART II - TEST DATA - TO BE PREPARED BY PERSON SUPERVISING TEST AT TIME OF TEST.** NOTE: MINIMUM TEST PRESSURE AND DURATION ARE NOT TO BE CHANGED WITHOUT WRITTEN APPROVAL.

TIME AND DATE REACHED TEST PRESSURE	ELEVATION AT TEST POINT	INDICATED TEST PRESSURE (1)	PSIG
<b>0820HR 12-01-83</b>	<b>575 FT.</b>	<b>600</b>	
TIME AND DATE TEST ENDED	MAX. ELEVATION IN TEST SECTION	TEST PRESSURE AT MAX. ELEVATION (2)	PSIG
<b>1030HR 12-01-83</b>	<b>625 FT.</b>	<b>578</b>	
ACTUAL DURATION OF TEST	MIN. ELEVATION IN TEST SECTION	TEST PRESSURE AT MIN. ELEVATION (3)	PSIG
<b>2 HR 10 MIN</b>	<b>575 FT.</b>	<b>600</b>	

TEST FLUID USED	PIPE SPEC. VERIFIED (SEE PART I)	PIPE FOOTAGE VERIFIED (SEE PART I)
<b>WATER</b>	<b>100%</b>	<b>100%</b>

MAKE, RANGE & SERIAL NO. OF RECORDING GAUGE	DATE LAST CALIBRATION	MAKE, RANGE & SERIAL NO. OF DEAD WEIGHT TESTER	DATE LAST CALIBRATION
<b>FOXBORO 0-2000 2545879</b>	<b>10/18/83</b>	<b>N/A</b>	<b>N/A</b>

TEST SUPERVISED BY: <b>J. B. Bushy</b>	APPROVED BY: <b>J. T. Blundie</b>
	DATE: <b>12/5/83</b>

**PUT SCHEMATIC SKETCH ON BACK OF THIS SHEET:**

SHOW LOCATION OF FACILITY TESTED, MIN. & MAX. ELEVATION IN FEET, MILE POINTS, VALVE NUMBERS AND INCORPORATED AREAS. USE AN ADDITIONAL SHEET IF NECESSARY (SHOW REFERENCE NUMBERS ON FACE OF ALL DRAWINGS AND ATTACHMENTS). FOR STATION PIPING, FABRICATED UNITS AND SHORT SECTION OF PIPE, ALSO SHOW A DETAILED SKETCH OF EACH ASSEMBLY TESTED.

**DISTRIBUTION**

DIST. GAS SUPT.-JOB FILE  
 DIV. GAS SUPT.  
 GC GAS - ASSIGNED JOBS  
 GAS SYSTEM DESIGN (2)  
 PLANT ACCTG. (WITH FOREMAN'S COPY OF JOB)  
 PIPELINE HISTORY FILE  
 \*REPORT FAILURES UNDER TEST TO GAS SYSTEM DESIGN AND GAS DISTRIBUTION DEPT'S.

- (1) LOWEST PRESSURE ON TEST GAUGE AT ANY TIME DURING TEST.
- (2) SUBTRACT STATIC HEAD DUE TO ELEVATION DIFFERENCE (BETWEEN TEST PT AND MAX. ELEVATION) FROM INDICATED TEST PRESSURE.
- (3) ADD STATIC HEAD DUE TO ELEVATION DIFFERENCE (BETWEEN TEST PT AND MIN. ELEVATION) TO INDICATED TEST PRESSURE.

FORM 1-61

UNITED STATES DEPARTMENT OF THE ARMY

HEADQUARTERS, 3RD INFANTRY DIVISION

REPORT OF RESULTS

TEST NO. 1

DATE TESTED

TEST LOCATION

TESTER

TEST RESULTS

TESTER'S SIGNATURE

TESTER'S TITLE

TESTER'S ORGANIZATION

TESTER'S ADDRESS

TESTER'S PHONE NUMBER

TESTER'S MAILING ADDRESS

TESTER'S CITY

TESTER'S STATE

TESTER'S ZIP CODE

TESTER'S GRADE

TESTER'S BRANCH

TESTER'S SERVICE NUMBER

TESTER'S SOCIAL SECURITY NUMBER

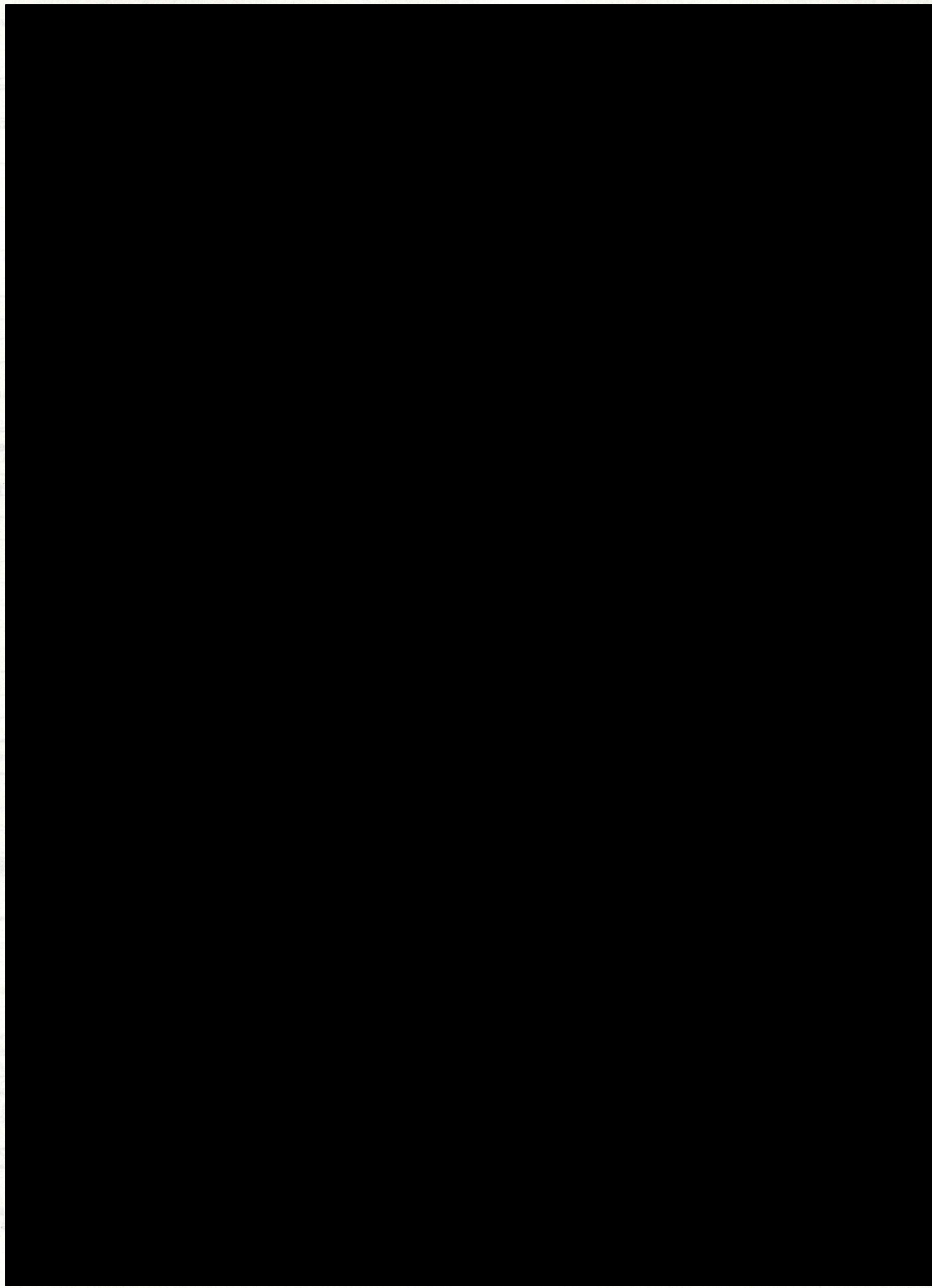
TESTER'S GRADE

TESTER'S BRANCH

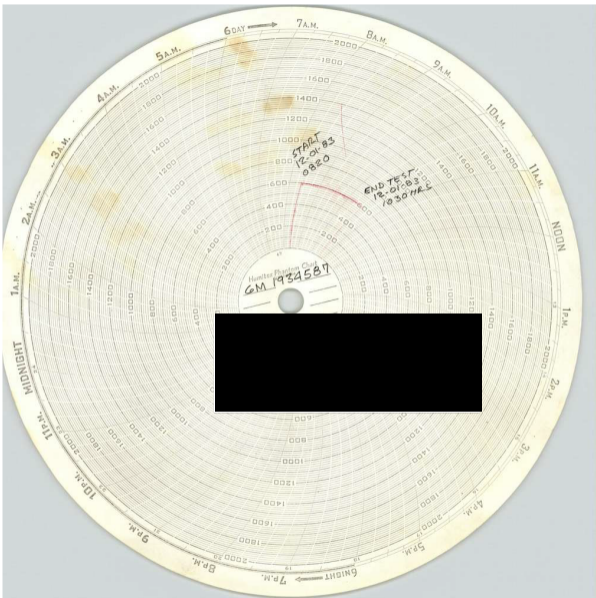
TESTER'S SERVICE NUMBER

TESTER'S SOCIAL SECURITY NUMBER

TESTER'S GRADE



REPORT OF RESULTS ON TEST RANGE AT THE TIME DURING TEST  
TESTER'S SIGNATURE  
TESTER'S TITLE  
TESTER'S ORGANIZATION  
TESTER'S ADDRESS  
TESTER'S PHONE NUMBER  
TESTER'S MAILING ADDRESS  
TESTER'S CITY  
TESTER'S STATE  
TESTER'S ZIP CODE  
TESTER'S GRADE  
TESTER'S BRANCH  
TESTER'S SERVICE NUMBER  
TESTER'S SOCIAL SECURITY NUMBER



1. JOB GM  
2. LOCATION 12  
3. DATE 0820-10  
4. TIME 2800  
5. LENGTH API 5LGR B S SER. N/A LAST CALIBRATED N/A  
6. PIPE SPEC. FOXBORO SER. N/A LAST CALIBRATED N/A  
7. RECORDING GAUGE 0-2000 SER. N/A LAST CALIBRATED N/A  
8. RANGE N/A SER. N/A LAST CALIBRATED N/A  
9. DEAD WGT. N/A SER. N/A LAST CALIBRATED N/A  
10. TEST FLUID WATER DATE 12/5/83  
11. SUPERVISED Sam B. Supply DATE 12/5/83  
12. APPROVED [Signature] DATE 12/5/83  
13. APPROVED [Signature] DATE 12/5/83