



Pacific Gas and Electric Company
Gas Pipeline Facilities Strength Test Pressure Report
 (For Pipeline Facilities Designed to Operate over 100 PSIG)

62-4921 (Rev. 2/04)
 California Gas Transmission
 (Use in Accordance with Gas Standard A-34 and GO 112-D)

Sheet _____ of _____

PART I - DESIGN DATA (TO BE PREPARED BY PROJECT ENGINEER)

Feeder Main Number, Line Number, or Station Name DFM 3002-01	Area 2	Division/District DIABLO DIVISION	Job Number 30882362	Date Job Authorized
--	------------------	---	-------------------------------	---------------------

Description of Job-- Include Reference Drawing Numbers, and Pipeline Mileposts
 REPLACE OLD DRS LOCATED AT "FILTER PLANT", WITH NEW 3-466 DRS LOCATED ON [REDACTED] (MP 0.91)

tested section of pipe to replace damaged section of DFM 3002-01 M.P. 0.91

Location Class 3	Design Factor (F) .5	MAOP to be Established for this Piping by this Test 400 PSIG	Future Design Pressure 400 PSIG
----------------------------	--------------------------------	--	---

STATIC HEAD DUE TO ELEVATION DIFFERENCE (WHERE APPLICABLE)	Max. Elevation 5.22 Ft.	Static Head Calculation	
	Min. Elevation 0 Ft.	For Water	0.433 X Elev. Diff. = 2.26 PSIG
	Elev. Diff. 5.22 Ft.	Other (Specify)	X Elev. Diff. = _____ PSIG

Size		API or ASTM Grade Long Seam (ERW, DSAW, Seamless, Etc.)	Footage to Be Tested	Pipe Spec. and Footage Verified In Field	% of SMYS			Pressure to Give 90% SMYS
O.D.	W.T.				At MAOP	At Min. Test Press.	At Max. Test Press.	
4.500"	0.237"	4" API-5L GR B, SMLS, 35,000 SMYS	5'	4'-10 5/8" JB	10.85	16.27	21.70	3318
8.625"	0.322"	8" API-5L GR B, SMLS, 35,000 SMYS	20'	7'-2 1/4" JB	15.31	22.96	30.61	2352
<i>↑ includes fittings ↓</i>								

Minimum Test Pressure @ Max. Elevation 600 PSIG	Test Fluid To Be Used WATER	MINIMUM TEST DURATION - UNDER 30% SMYS (1 HR. MINIMUM) - 30% SMYS & OVER (8 HRS. MINIMUM) - PREINSTALLATION TEST (SEE ATTACHMENT 'A', GAS STD. A-34)	1 HOURS
Maximum Test Pressure @ Min. Elevation 800 PSIG			

Prepared By: RUSS MARTINO 925-459-7295	Date: 6/20/2013	For Information or Changes, Call: TIM SCHEELE 925-324-8662	Approved By: <i>[Signature]</i> TIM SCHEELE 925-324-8662	Date: 6/20/13
--	---------------------------	--	--	-------------------------

PART II - TEST DATA (TO BE PREPARED BY PERSON SUPERVISING TEST AT TIME OF TEST)

Note: Minimum test pressure and duration are not to be changed without written approval.

Time and Date Test Pressure Reached 13:10 6/20/13	Elevation at Test Point 0 FT	Min. Required Test Press. At Test Point (1) 603 PSIG	Max. Allowable Test Press at Test Point (4) 800 PSIG
Time and Date Test Ended 14:30 6/20/13	Max. Elevation in Test Section 5.22 FT	Min. Indicated Test Pressure (2) 695 PSIG	Max. Indicated Test Pressure (5) 722 PSIG
Actual Duration of Test 1 Hour 20 min.	Min. Elevation in Test Section 0 FT	Min. Test Pressure at Max. Elevation (3) 692 PSIG	Max. Test Pressure at Min. Elevation (6) 722 PSIG

Test Fluid Used **Water** Pipe Specification and Footage Verified (See Part I)
JB

Make, Range, and Serial No. of Pressure Recording Gauge Mercury, 0-1000 PSI, S.N. 8800920	Date Last Calibrated 2/20/13	Make, Range, and Serial No. of Dead Weight Tester (See Note 7) N/A	Date Last Calibrated N/A
---	--	--	------------------------------------

Test Supervised By Jason Bruno JTB9	Date: 6/20/13	Approved By: <i>[Signature]</i>	Date: 6/20/13
---	-------------------------	------------------------------------	-------------------------

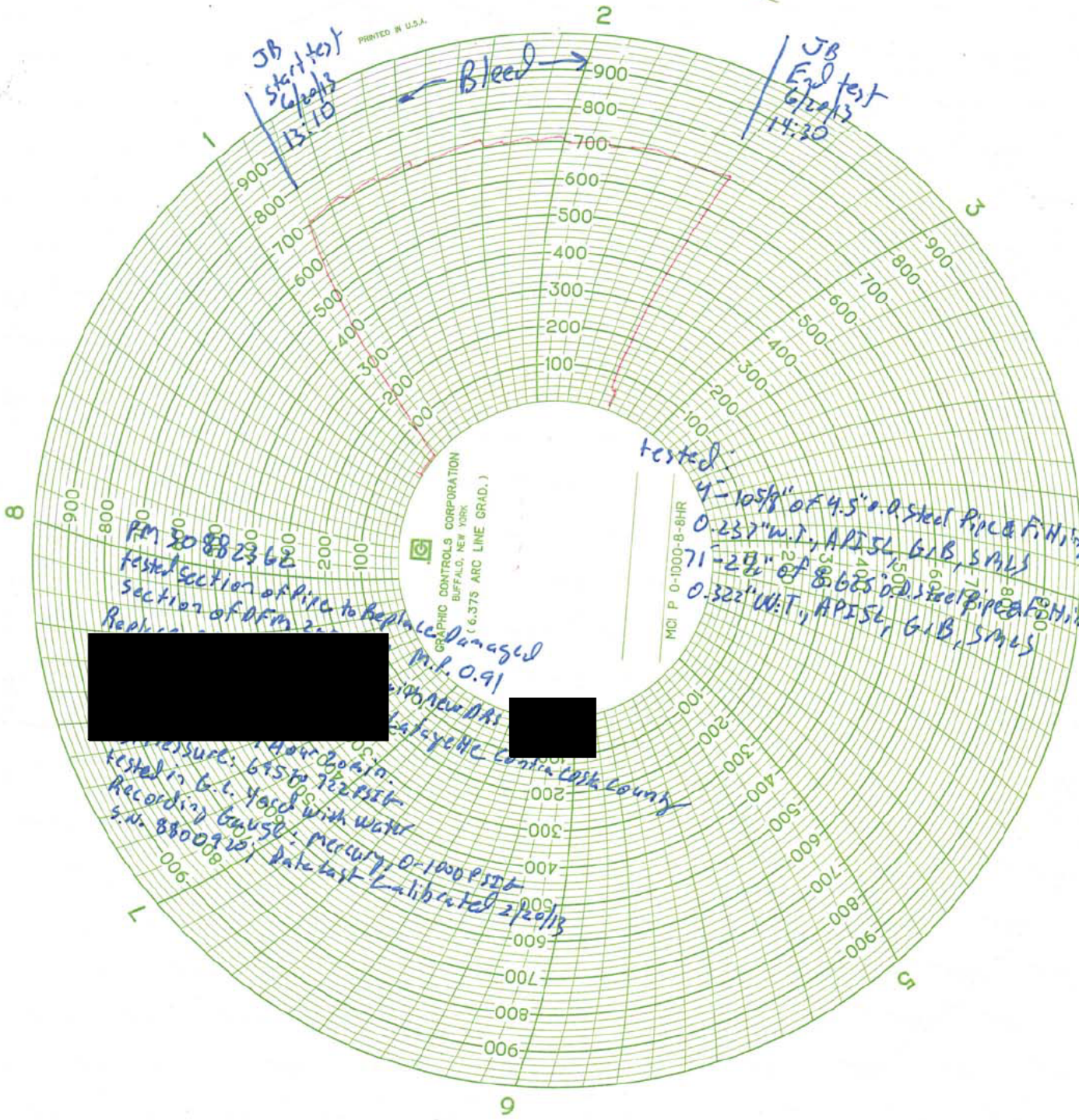
PUT SCHEMATIC PIPING SKETCH ON BACK OF THIS SHEET
 SHOW LOCATION OF FACILITY TESTED, MINIMUM AND MAXIMUM ELEVATION IN FEET, MILE POINTS, VALVE NUMBERS AND INCORPORATED AREAS. USE AN ADDITIONAL SHEET IF NECESSARY (SHOW REFERENCE NUMBERS ON FACE OF ALL DRAWINGS AND ATTACHMENTS). FOR STATION PIPING, FABRICATED UNITS AND SHORT SECTIONS OF PIPE, ALSO SHOW A DETAILED SKETCH OF EACH ASSEMBLY TESTED.

- | | |
|--|---|
| <p>NOTES:</p> <ol style="list-style-type: none"> Add the static head due to elevation difference (between test point and maximum elevation) to "minimum test pressure at maximum elevation" from PART I. Use lowest pressure on test gauge at any time during test. Subtract static head due to elevation difference (between test point and maximum elevation) from minimum indicated test pressure. Subtract static head due to elevation difference (between test point and minimum elevation) from "maximum test pressure at minimum elevation" from PART I. Highest pressure on test gauge at any time during test. Add static head due to elevation difference (between test point and minimum elevation) to maximum indicated test pressure. A dead weight tester is only required when testing to a pressure which produces a stress level of 90% of SMYS or greater. However, if a dead weight tester is used on any test, enter the information in the space provided above. | <p>DISTRIBUTION</p> <p>JOB FILE (AT SPONSORING ORGANIZATION)</p> <p>GSM&TS RESPONSIBLE DISTRICT SUPERINTENDENT</p> <p>PROJECT MANAGER/PROJECT ENGINEER</p> <p>TECHNICAL & CONSTRUCTION SERVICES - ASSIGNED JOBS ONLY</p> <p>CAPITAL ACCOUNTING (FOREMAN'S COPY OF JOB)</p> <p>RECORDS SECTION (WC), GSM&TS</p> <p>REPORT FAILURES UNDER TEST TO GAS ENGINEERING & PLANNING</p> |
|--|---|

JB
Start test
6:00 PM
13:10

JB
End test
6:00 PM
14:30

Bleed →



tested:

4-1058' of 4.5" o.d. steel pipe & fittings
 0.237" W.T., API 5L, GIB, SMLS
 71-28' of 8.625" o.d. steel pipe & fittings
 0.322" W.T., API 5L, GIB, SMLS

PM 20 88 23 62

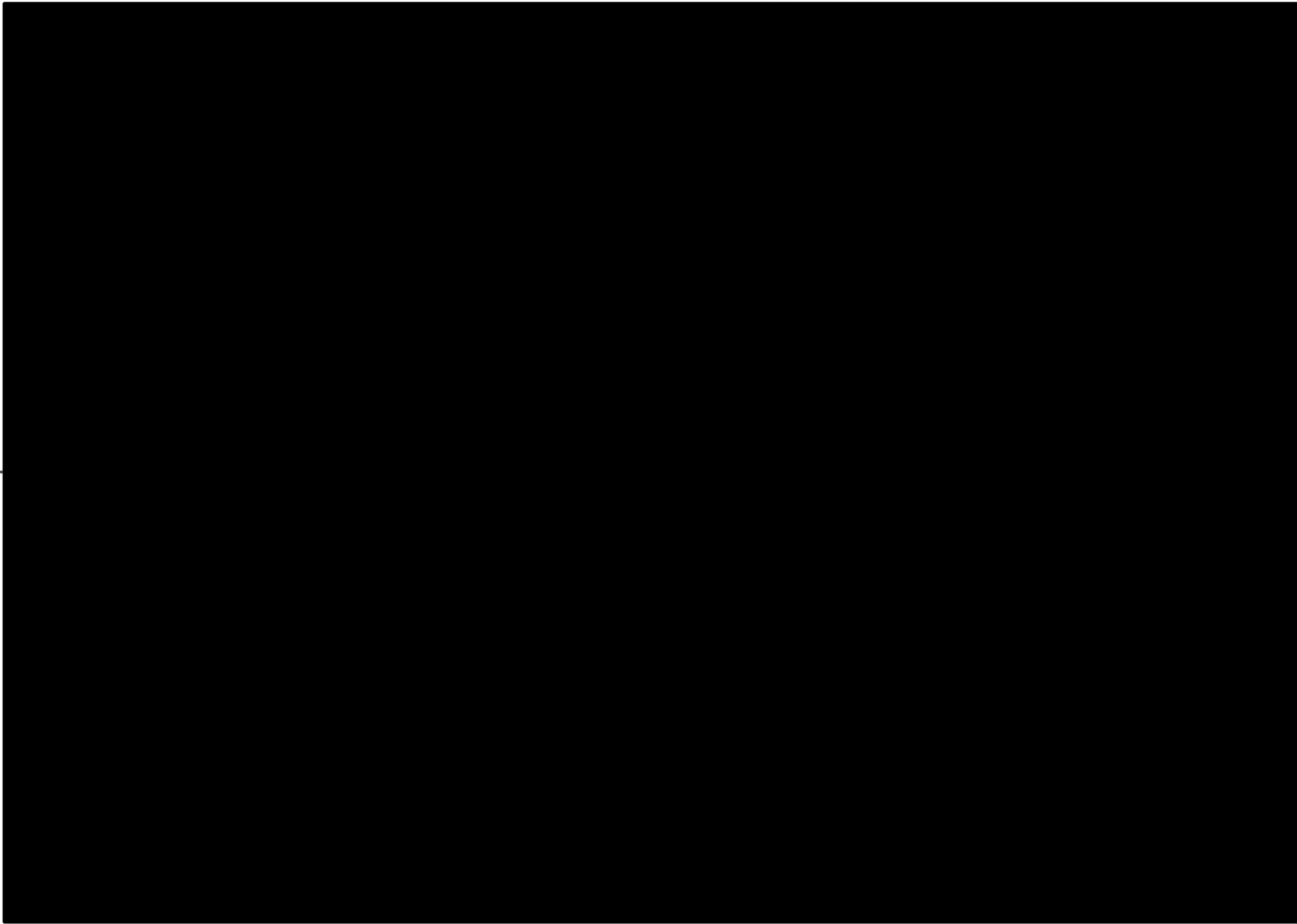
tested section of pipe to replace damaged
 section of DFM 2
 Replace [redacted]
 M.P. 0.91
 NEW DR [redacted]
 [redacted] Contra Costa County

Pressure: 1400 PSI
 tested in G.C. yard with water
 Recording gauge: mercury, 0-1000 PSI
 S.N. 8800920; Data last calibrated 2/20/13

14. Length 4'-10 5/8" Spec. 4.5" w.t. 0.237"
 15. Pipe spec. API 5L, Gr B, SMLS

STRENGTH TEST

1. JOB Pro Section of pipe to replace damaged
 2. LOCATION Section of DFM 3002-01 M.P. 0.91
 3. DATE [Redacted] at Filter Plant with new ORS
 4. TORE 13 [Redacted] Lafayette, Contra Costa County
 5. LENGTH 4'-10 5/8" W.T. 0.322"
 6. PIPE SPEC. API 5L, Gr B, SMLS
 7. RECORDING RANGE Mercury
 8. RANGE 0-1000 PSIG 1 Hour 20 min.
 9. DEAD WEIGHT N/A
 10. RANGE N/A
 11. TEST FLUID Water SERIAL # 8800920
 12. SUPERVISED Jamun B. Muni LAST CALIBRATED 2/20/13
 13. APPROVED Jamun B. Muni JIB9 LAST CALIBRATED N/A
 DATE 6/20/13
 DATE 6/25/13



No. 1242 8 1/2" x 11" 35°16' ISOMETRIC