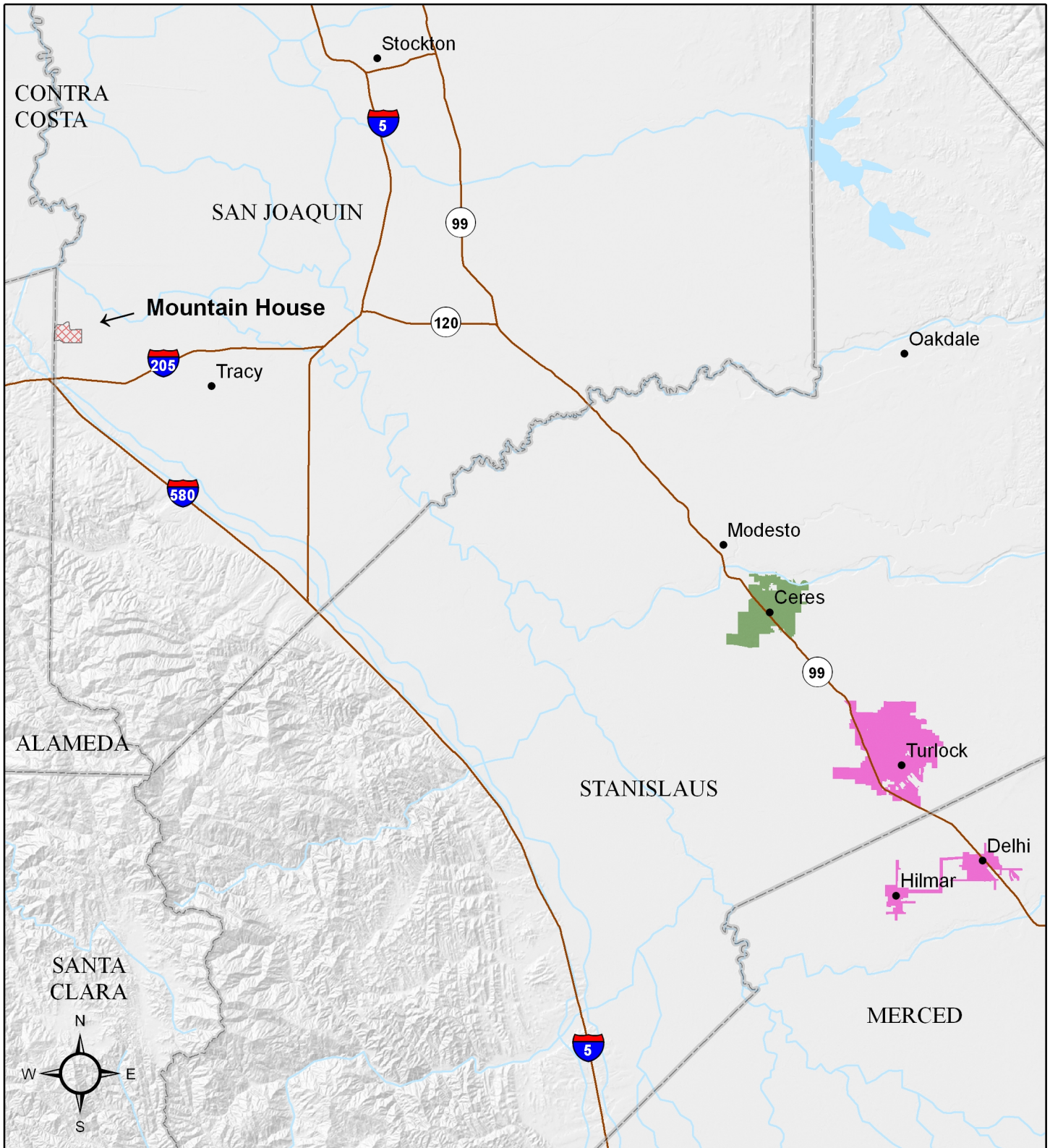
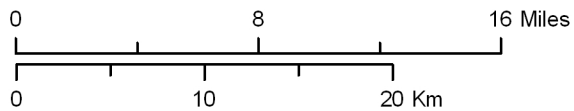


CHARTER MARCUS CABLE ASSOCIATES (FRANCHISE #014) VIDEO FRANCHISE TERRITORY IN CALIFORNIA



FRANCHISE TERRITORY

- WITHDRAWN - 9/05/08
(Application #V0809001)*
- 5/30/08 Application
(Application #V0805007)*
- Initial Application - 11/16/07
(Application #V0711004)*



Source: Marcus Cable Associates State Video Franchise Application; 2007
 Projection: Lambert Conformal Conic. Coordinate System: California State Plane, Zone 3; North American Datum 1983
 Prepared by the California Public Utilities Commission, Communications Division, Video Franchising and Broadband Deployment Group