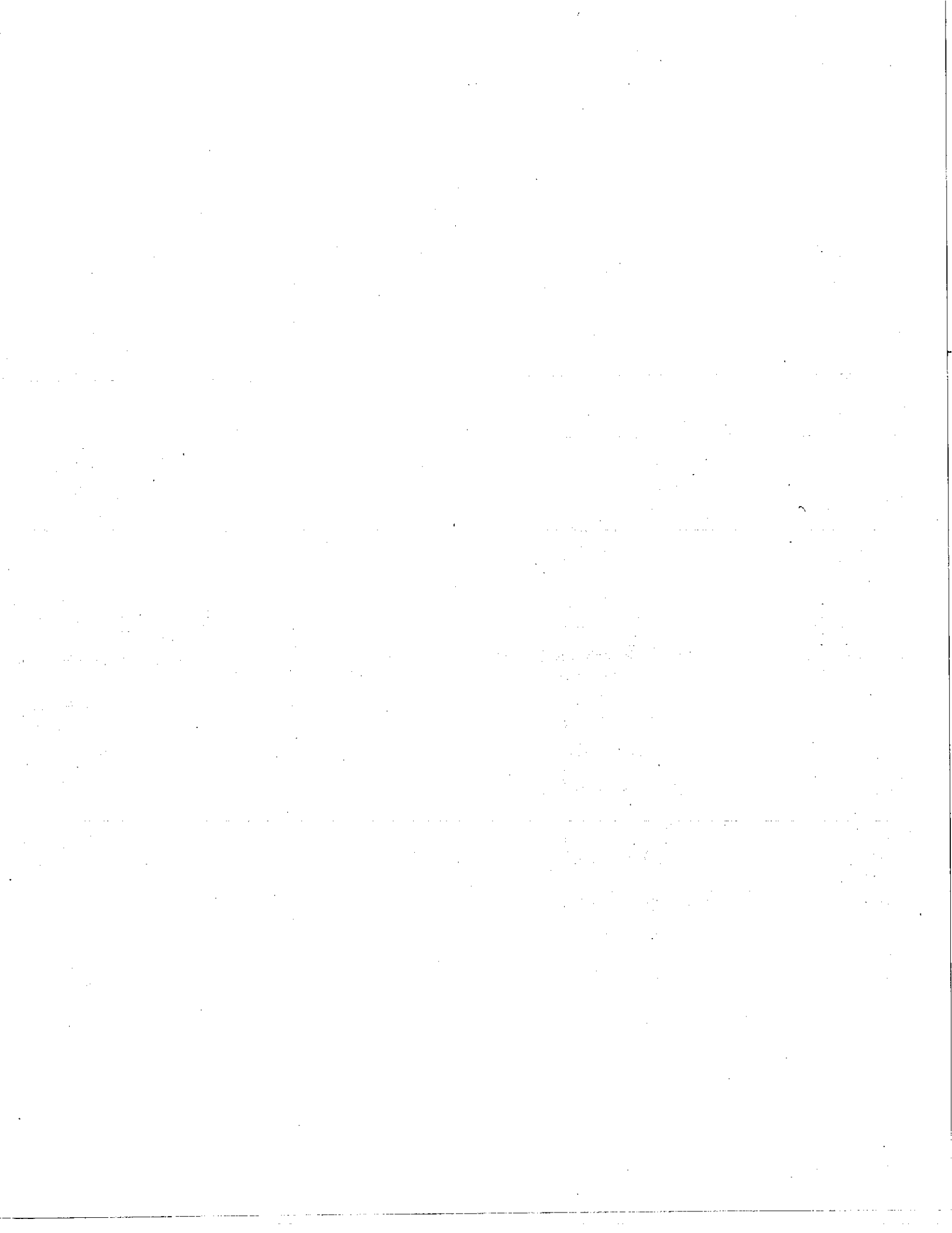


General Order No. 165, Inspection Cycles For Electric Distribution Facilities
 1998 Annual Report
 Ridgecrest District

		1998			Corrective Action		Recovery Date
		Summary (2)					
Distribution Equipment	Scheduled	Completed	Balance Remaining	% (1)	Explanation For Balance (> 0)		
Transformers							
Overhead	1	2	0	0.0%			
Underground	0	0	0	0.0%			
Pad Mounted	0	0	0	0.0%			
Sub-Total	1	2	0	0.0%			
Switching/Protective Devices							
Overhead	0	1	0	0.0%			
Underground	1	2	0	0.0%			
Pad Mounted	0	0	0	0.0%			
Sub-Total	1	3	0	0.0%			
Regulators							
Overhead	0	0	0	0.0%			
Underground	0	0	0	0.0%			
Pad Mounted	0	0	0	0.0%			
Sub-Total	0	0	0	0.0%			
Capacitors							
Overhead	0	14	0	0.0%			
Underground	0	0	0	0.0%			
Pad Mounted	0	0	0	0.0%			
Sub-Total	0	14	0	0.0%			
Conductors, Cables							
Overhead (Conductor Miles)	0	.0	0	0.0%			
Street Lights							
	0	0	0	0.0%			
Wood Poles							
	0	22	0	0.0%			
Total	2	41	0	0.0%			
(1) Percentage of remaining Corrective Actions							
(2) Summary = Condition Level 4 + condition Level 5 from Page 6.							

General Order No. 165, Inspection Cycles For Electric Distribution Facilities
1998 Annual Report
Ridgecrest District

	1999				1999			
	Inspections				Corrective Actions			
	Detail/Intru	1998 Planned	Detail/Intrusive	Total Planned	'98 Balance Remaining	1999 Planned (1)	Total Planned	
	'98 Balance Remaining	Patrol (2)						
Distribution Equipment								
Transformers								
Overhead	0	1,642	0	1,642	0	0	0	
Underground	0	136	272	408	0	0	0	
Pad Mounted	0	279	48	327	0	0	0	
Sub-Total	0	2,057	320	2,377	0	0	0	
Switching/Protective Devices								
Overhead	0	11	0	11	0	0	0	
Underground	0	46	44	90	0	0	0	
Pad Mounted	0	24	13	37	0	0	0	
Sub-Total	0	81	57	138	0	0	0	
Regulators								
Overhead	0	1	0	1	0	0	0	
Underground	0	0	0	0	0	0	0	
Pad Mounted	0	0	0	0	0	0	0	
Sub-Total	0	1	0	1	0	0	0	
Capacitors								
Overhead	0	31	0	31	0	0	0	
Underground	0	0	0	0	0	0	0	
Pad Mounted	0	0	0	0	0	0	0	
Sub-Total	0	31	0	31	0	0	0	
Conductors, Cables								
Overhead (Conductor Miles)	0	957	0	957	0	0	0	
Street Lights								
N/A	N/A	0	N/A	0	0	0	0	
Wood Poles								
0	0	7,075	0	7,075	0	2	2	
Total	0	10,203	377	10,580	0	2	2	
(1) District is required to patrol 34% of its circuits in 1999. No street lights are planned to be patrolled in 1999. (2) Corrective actions planned to be completed in 1999 based on items found through previous inspections.								



General Order No. 165, Inspection Cycles For Electric Distribution Facilities
1998 Annual Report
Blythe District

1998											
Inspection Cycles											
(Maximum Intervals In Years)											
Distribution Equipment	Patrol		Detailed		Intrusive		Total Inventory	Total Circuits	Required	Circuits Patrolled (%)	
	Urban	Rural	Urban	Rural	Urban	Rural					
Transformers											
Overhead	1	2	5	5	-	-	3,287				
Underground	1	2	3	3	-	-	92				
Pad Mounted	1	2	5	5	-	-	366				
Sub-Total							3,745				
Switching/Protective Devices											
Overhead	1	2	5	5	-	-	152				
Underground	1	2	3	3	-	-	22				
Pad Mounted	1	2	5	5	-	-	46				
Sub-Total							220				
Regulators											
Overhead	1	2	5	5	-	-	4				
Underground	1	2	3	3	-	-	0				
Pad Mounted	1	2	5	5	-	-	0				
Sub-Total							4				
Capacitors											
Overhead	1	2	5	5	-	-	79				
Underground	1	2	3	3	-	-	0				
Pad Mounted	1	2	5	5	-	-	0				
Sub-Total							79				
Conductors, Cables											
Overhead (Conductor Miles)	1	2	5	5	-	-	2,070				
Street Lights											
	1	2	-	-	-	-	1,185				
Wood Poles											
	1	2	-	-	-	-	13,473				
Total							20,776	39	2	39	100%

(1) For 1998, SCE patrolled circuits to conduct simple visual inspections of distribution facilities. Underground structures and equipment are not opened on Circuit Patrol Inspections.

General Order No. 165, Inspection Cycles For Electric Distribution Facilities
1998 Annual Report
Blythe District

		1998			Inspections		Patrol		
		Planned (1)	Complete (2)	Balance Remaining	Explanation For Balance (> 0)	Recovery Date			
Distribution Equipment									
Transformers									
	Overhead	169	3,287	0					
	Underground	5	92	0					
	Pad Mounted	19	366	0					
	Sub-Total	192	3,745	0					
Switching/Protective Devices									
	Overhead	8	152	0					
	Underground	1	22	0					
	Pad Mounted	2	46	0					
	Sub-Total	11	220	0					
Regulators									
	Overhead	0	4	0					
	Underground	0	0	0					
	Pad Mounted	0	0	0					
	Sub-Total	0	4	0					
Capacitors									
	Overhead	4	79	0					
	Underground	0	0	0					
	Pad Mounted	0	0	0					
	Sub-Total	4	79	0					
Conductors, Cables									
	Overhead (Conductor Miles)	106	2,070	0					
Street Lights									
		0	1,185	0					
Wood Poles									
		691	13,473	0					
	Total	1,005	20,776	0					
<p>(1) Planned Patrol Inspections are based on Required Circuit Patrols (excl Streetlights). Planned amounts are different from 1997 GO 165 Report due to changes in the inventory and the quantity of required circuit patrols</p> <p>(2) Completed Patrol Inspections are based on the percentage of total patrolled circuits (excl Streetlights).</p>									

**General Order No. 165, Inspection Cycles For Electric Distribution Facilities
1998 Annual Report
Blythe District**

		1998		Inspections		Detail/Intrusive		Recovery
								Date
Distribution Equipment	Planned	Complete	Balance Remaining	Explanation For Balance (> 0)				
Transformers								
Overhead	0	0	0					
Underground	10	12	0					
Pad Mounted	38	41	0					
Sub-Total	48	53	0					
Switching/Protective Devices								
Overhead	0	0	0					
Underground	29	29	0					
Pad Mounted	8	29	0					
Sub-Total	37	58	0					
Regulators								
Overhead	0	0	0					
Underground	0	0	0					
Pad Mounted	0	0	0					
Sub-Total	0	0	0					
Capacitors								
Overhead	0	0	0					
Underground	0	0	0					
Pad Mounted	0	0	0					
Sub-Total	0	0	0					
Conductors, Cables								
Overhead (Conductor Miles)	0	0	0					
Street Lights								
	N/A	N/A	N/A					
Wood Poles								
	295	577	0					
Total	380	688	0					

General Order No. 165, Inspection Cycles For Electric Distribution Facilities
1998 Annual Report
Blythe District

		1998		
		Inspections ⁽¹⁾⁽²⁾		
		Summary		
Distribution Equipment		Planned	Complete	Balance Remaining
Transformers				
Overhead		169	3,287	0
Underground		15	104	0
Pad Mounted		57	407	0
	Sub-Total	240	3,798	0
Switching/Protective Devices				
Overhead		8	152	0
Underground		30	51	0
Pad Mounted		10	75	0
	Sub-Total	48	278	0
Regulators				
Overhead		0	4	0
Underground		0	0	0
Pad Mounted		0	0	0
	Sub-Total	0	4	0
Capacitors				
Overhead		4	79	0
Underground		0	0	0
Pad Mounted		0	0	0
	Sub-Total	4	79	0
Conductors, Cables				
Overhead (Conductor Miles)		106	2,070	0
Street Lights				
		0	1,185	0
Wood Poles				
		986	14,050	0
	Total	1,385	21,464	0
<p>(1) Total inspections may exceed total inventory of an asset as equipment may be inspected twice in a year.</p> <p>(2) Includes Patrols + Details/Intrusives.</p>				

General Order No. 165, Inspection Cycles For Electric Distribution Facilities
1998 Annual Report
Blythe District

	1998 Condition Rating							Summary (g) Total % (i)
	Level 1, 2, 3		Level 4		Level 5			
	Total	% (i)	Total	% (i)	Total	% (i)		
Distribution Equipment								
Transformers								
Overhead	3,287	100.0%	0	0.0%	0	0.0%	3,287 100.0%	
Underground	104	100.0%	0	0.0%	0	0.0%	104 100.0%	
Pad Mounted	407	100.0%	0	0.0%	0	0.0%	407 100.0%	
Sub-Total	3,798	100.0%	0	0.0%	0	0.0%	3,798 100.0%	
Switching/Protective Devices								
Overhead	152	100.0%	0	0.0%	0	0.0%	152 100.0%	
Underground	51	100.0%	0	0.0%	0	0.0%	51 100.0%	
Pad Mounted	75	100.0%	0	0.0%	0	0.0%	75 100.0%	
Sub-Total	278	100.0%	0	0.0%	0	0.0%	278 100.0%	
Regulators								
Overhead	4	100.0%	0	0.0%	0	0.0%	4 100.0%	
Underground	0	0.0%	0	0.0%	0	0.0%	0 0.0%	
Pad Mounted	0	0.0%	0	0.0%	0	0.0%	0 0.0%	
Sub-Total	4	100.0%	0	0.0%	0	0.0%	4 100.0%	
Capacitors								
Overhead	79	100.0%	0	0.0%	0	0.0%	79 100.0%	
Underground	0	0.0%	0	0.0%	0	0.0%	0 0.0%	
Pad Mounted	0	0.0%	0	0.0%	0	0.0%	0 0.0%	
Sub-Total	79	100.0%	0	0.0%	0	0.0%	79 100.0%	
Conductors, Cables								
Overhead (Conductor Miles)	2,070	100.0%	0	0.0%	0	0.0%	2,070 100.0%	
Street Lights								
Overhead	1,185	100.0%	0	0.0%	0	0.0%	1,185 100.0%	
Wood Poles								
Overhead	14,003	99.7%	44	0.3%	3	0.0%	14,050 100.0%	
Underground	0	0.0%	0	0.0%	0	0.0%	0 0.0%	
Sub-Total	21,417	99.8%	44	0.2%	3	0.0%	21,464 100.0%	

(1) Percentage of Total Completed Inspections

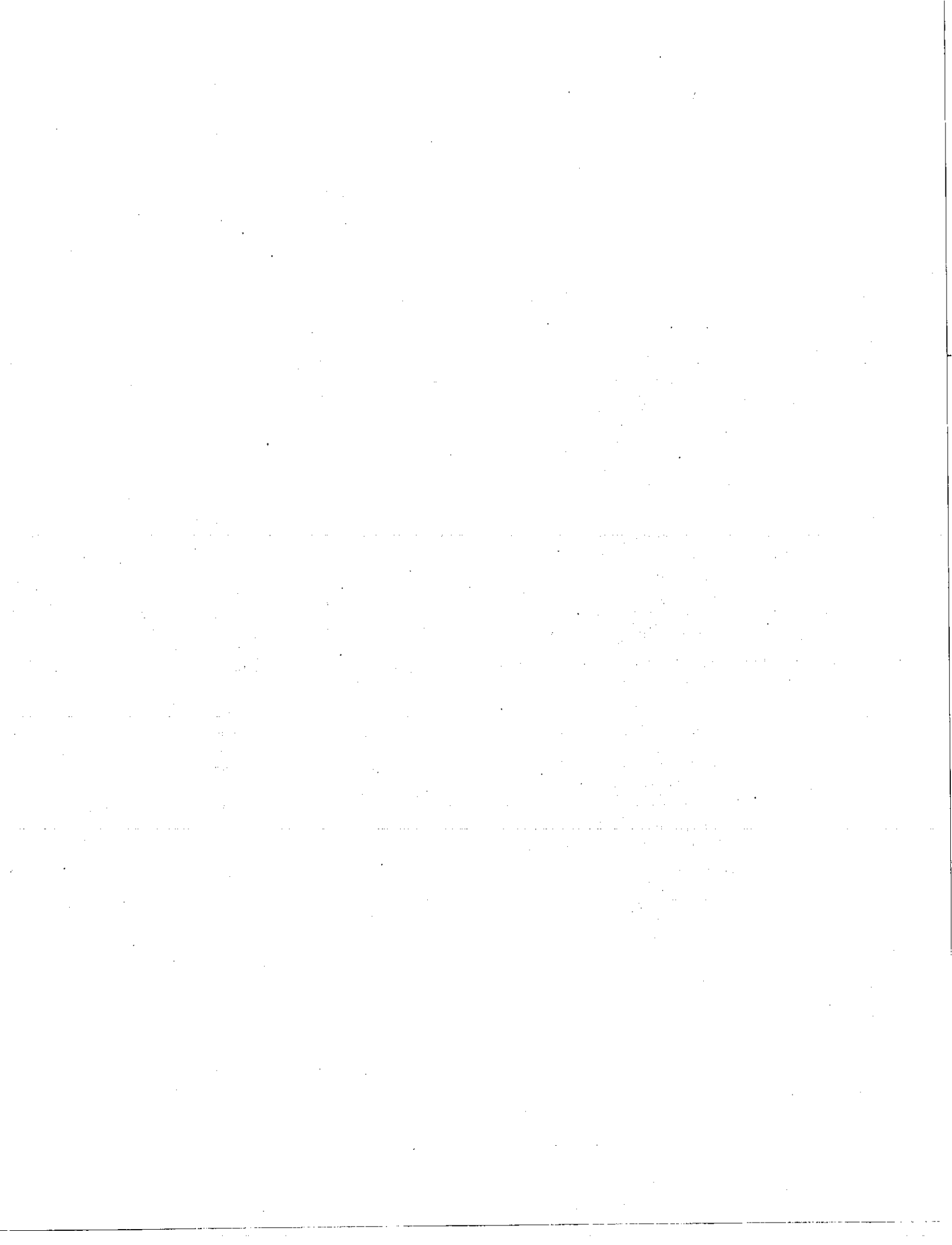
(2) Total condition rating exceeds total inventory as it includes patrol and detailed/intrusive inspections.

General Order No. 165, Inspection Cycles For Electric Distribution Facilities
1998 Annual Report
Blythe District

		Level 4		Level 5				
		Corrective Action						
Distribution Equipment	Scheduled	Completed	Balance Remaining	% (1)	Scheduled	Completed	Balance Remaining	% (1)
Transformers								
Overhead	0	0	0	0.0%	0	0	0	0.0%
Underground	0	0	0	0.0%	0	0	0	0.0%
Pad Mounted	0	0	0	0.0%	0	0	0	0.0%
Sub-Total	0	0	0	0.0%	0	0	0	0.0%
Switching/Protective Devices								
Overhead	0	0	0	0.0%	0	0	0	0.0%
Underground	0	0	0	0.0%	0	0	0	0.0%
Pad Mounted	0	0	0	0.0%	0	0	0	0.0%
Sub-Total	0	0	0	0.0%	0	0	0	0.0%
Regulators								
Overhead	0	0	0	0.0%	0	0	0	0.0%
Underground	0	0	0	0.0%	0	0	0	0.0%
Pad Mounted	0	0	0	0.0%	0	0	0	0.0%
Sub-Total	0	0	0	0.0%	0	0	0	0.0%
Capacitors								
Overhead	0	0	0	0.0%	0	0	0	0.0%
Underground	0	0	0	0.0%	0	0	0	0.0%
Pad Mounted	0	0	0	0.0%	0	0	0	0.0%
Sub-Total	0	0	0	0.0%	0	0	0	0.0%
Conductors, Cables								
Overhead (Conductor Miles)	0	0	0	0.0%	0	0	0	0.0%
Street Lights								
	0	0	0	0.0%	0	0	0	0.0%
Wood Poles								
	0	50	0	0.0%	0	0	0	0.0%
Total	0	50	0	0.0%	0	0	0	0.0%
(1) Percentage of remaining Corrective Actions								

**General Order No. 165, Inspection Cycles For Electric Distribution Facilities
1998 Annual Report
Blythe District**

	1999				1999			
	Inspections				Corrective Actions			
	Detail/Intru '98 Balance Remaining	1999 Planned Patrol (1)	Detail/ Intrusive	Total Planned	'98 Balance Remaining	1999 Planned	Total Planned	
Distribution Equipment								
Transformers								
Overhead	0	0	0	0	0	0	0	
Underground	0	0	40	40	0	0	0	
Pad Mounted	0	0	29	29	0	0	0	
Sub-Total	0	0	69	69	0	0	0	
Switching/Protective Devices								
Overhead	0	0	0	0	0	0	0	
Underground	0	0	8	8	0	0	0	
Pad Mounted	0	0	4	4	0	0	0	
Sub-Total	0	0	12	12	0	0	0	
Regulators								
Overhead	0	0	0	0	0	0	0	
Underground	0	0	0	0	0	0	0	
Pad Mounted	0	0	0	0	0	0	0	
Sub-Total	0	0	0	0	0	0	0	
Capacitors								
Overhead	0	0	0	0	0	0	0	
Underground	0	0	0	0	0	0	0	
Pad Mounted	0	0	0	0	0	0	0	
Sub-Total	0	0	0	0	0	0	0	
Conductors, Cables								
Overhead (Conductor Miles)	0	0	0	0	0	0	0	
Street Lights								
N/A	N/A	0	N/A	0	0	0	0	
Wood Poles								
0	0	0	0	0	0	1	1	
Total	0	0	81	81	0	1	1	
				(1) District is not required to patrol any of its circuits in 1999.				
				No street lights are planned to be patrolled in 1999.				
				(2) Corrective actions planned to be completed in 1999 based on items found through previous inspections.				



General Order No. 165, Inspection Cycles For Electric Distribution Facilities
1998 Annual Report
Bishop District

		Inspection Cycles						1998		Circuits				
		(Maximum Intervals In Years)												
Distribution Equipment	Patrol	Urban		Rural		Instructive	Rural	Total	Inventory	Total	Circuits	Required	Total	%
		Urban	Rural	Urban	Rural									
Transformers														
Overhead	1	2	5	5	5	--	--	2,317						
Underground	1	2	3	3	3	--	--	11						
Pad Mounted	1	2	5	5	5	--	--	1,238						
Sub-Total								3,561						
Switching/Protective Devices														
Overhead	1	2	5	5	5	--	--	23						
Underground	1	2	3	3	3	--	--	140						
Pad Mounted	1	2	5	5	5	--	--	64						
Sub-Total								227						
Regulators														
Overhead	1	2	5	5	5	--	--	1						
Underground	1	2	3	3	3	--	--	0						
Pad Mounted	1	2	5	5	5	--	--	0						
Sub-Total								1						
Capacitors														
Overhead	1	2	5	5	5	--	--	41						
Underground	1	2	3	3	3	--	--	0						
Pad Mounted	1	2	5	5	5	--	--	2						
Sub-Total								43						
Conductors, Cables														
Overhead (Conductor Miles)	1	2	5	5	5	--	--	1,326						
Street Lights	1	2	--	--	--	--	--	494						
Wood Poles								12,603						
Total								18,285		44	15	44	100%	
(1) For 1998, SCE patrolled circuits to conduct simple visual inspections of distribution facilities. Underground structures and equipment are not opened on Circuit Patrol inspections.														

**General Order No. 165, Inspection Cycles For Electric Distribution Facilities
1998 Annual Report
Bishop District**

		1998			Recovery Date
		Inspections Patrol			
Distribution Equipment	Planned (1)	Complete (2)	Balance Remaining	Explanation For Balance (> 0)	
Transformers					
Overhead	790	2,317	0		
Underground	4	11	0		
Pad Mounted	420	1,293	0		
Sub-Total	1,214	3,561	0		
Switching/Protective Devices					
Overhead	8	23	0		
Underground	48	140	0		
Pad Mounted	22	64	0		
Sub-Total	77	227	0		
Regulators					
Overhead	0	1	0		
Underground	0	0	0		
Pad Mounted	0	0	0		
Sub-Total	0	1	0		
Capacitors					
Overhead	14	41	0		
Underground	0	0	0		
Pad Mounted	1	2	0		
Sub-Total	15	43	0		
Conductors, Cables					
Overhead (Conductor Miles)	452	1,326	0		
Street Lights					
	0	0	0		
Wood Poles					
	4,296	12,603	0		
Total	6,055	17,761	0		
(1) Planned Patrol Inspections are based on Required Circuit Patrols (excl Streetlights).					
Planned amounts are different from 1997 GO 165 due to changes in the inventory and the quantity of required circuit patrols.					
(2) Completed Patrol Inspections are based on the percentage of total patrolled circuits (excl Streetlights).					

General Order No. 165, Inspection Cycles For Electric Distribution Facilities
1998 Annual Report
Bishop District

		1998		
		Inspections (1)(2)		
		Summary		
Distribution Equipment	Planned	Complete	Balance Remaining	
Transformers				
Overhead	790	2,317	0	
Underground	4	11	0	
Pad Mounted	594	1,415	0	
Sub-Total	1,388	3,743	0	
Switching/Protective Devices				
Overhead	8	23	0	
Underground	139	231	0	
Pad Mounted	25	106	0	
Sub-Total	171	360	0	
Regulators				
Overhead	0	1	0	
Underground	0	0	0	
Pad Mounted	0	0	0	
Sub-Total	0	1	0	
Capacitors				
Overhead	14	41	0	
Underground	0	0	0	
Pad Mounted	1	4	0	
Sub-Total	15	45	0	
Conductors, Cables				
Overhead (Conductor Miles)	452	1,326	0	
Street Lights				
	0	0	0	
Wood Poles				
	4,296	12,642	0	
Total	6,323	18,117	0	

(1) Total inspections may exceed total inventory of an asset as equipment may be inspected twice in a year.
(2) Includes Patrols + Details/Intrusives.

General Order No. 165, Inspection Cycles For Electric Distribution Facilities
1998 Annual Report
Bishop District

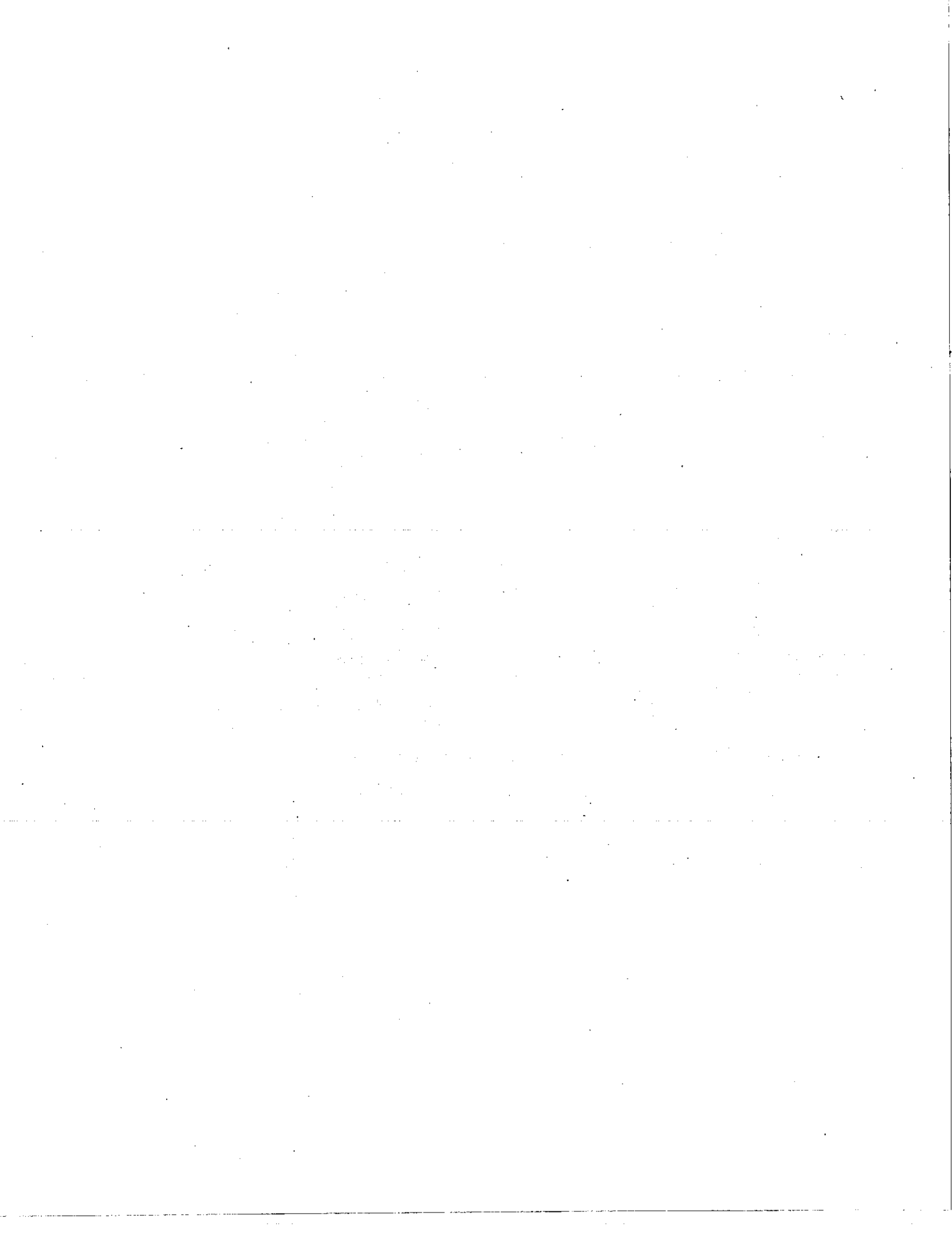
		1998						
		Condition Rating						
Distribution Equipment	Level 1, 2, 3 Total	% (1)	Level 4 Total	% (1)	Level 5 Total	% (1)	Summary (2)	
							Total	% (1)
Transformers								
Overhead	2,317	100.0%	0	0.0%	0	0.0%	2,317	100.0%
Underground	11	100.0%	0	0.0%	0	0.0%	11	100.0%
Pad Mounted	1,415	100.0%	0	0.0%	0	0.0%	1,415	100.0%
Sub-Total	3,743	100.0%	0	0.0%	0	0.0%	3,743	100.0%
Switching/Protective Devices								
Overhead	23	100.0%	0	0.0%	0	0.0%	23	100.0%
Underground	230	99.6%	1	0.4%	0	0.0%	231	100.0%
Pad Mounted	106	100.0%	0	0.0%	0	0.0%	106	100.0%
Sub-Total	359	99.7%	1	0.3%	0	0.0%	360	100.0%
Regulators								
Overhead	1	100.0%	0	0.0%	0	0.0%	1	100.0%
Underground	0	0.0%	0	0.0%	0	0.0%	0	0.0%
Pad Mounted	0	0.0%	0	0.0%	0	0.0%	0	0.0%
Sub-Total	1	100.0%	0	0.0%	0	0.0%	1	100.0%
Capacitors								
Overhead	41	100.0%	0	0.0%	0	0.0%	41	100.0%
Underground	0	0.0%	0	0.0%	0	0.0%	0	0.0%
Pad Mounted	4	100.0%	0	0.0%	0	0.0%	4	100.0%
Sub-Total	45	100.0%	0	0.0%	0	0.0%	45	100.0%
Conductors, Cables								
Overhead (Conductor Miles)	1,326	100.0%	0	0.0%	0	0.0%	1,326	100.0%
Street Lights								
	0	0.0%	0	0.0%	0	0.0%	0	0.0%
Wood Poles								
	12,626	99.9%	16	0.1%	0	0.0%	12,642	100.0%
Total	18,100	99.9%	17	0.1%	0	0.0%	18,117	100.0%
		(1) Percentage of Total Completed Inspections						
		(2) Total condition rating exceeds total inventory as it includes patrol and detailed/intrusive inspections.						

General Order No. 165, Inspection Cycles For Electric Distribution Facilities
1998 Annual Report
Bishop District

		1998				Corrective Action			
		Level 4		Balance		Level 5		Balance	
Distribution Equipment	Scheduled	Completed	Remaining	% (1)	Scheduled	Completed	Remaining	% (1)	
Transformers									
Overhead	1	1	0	0.0%	0	0	0	0.0%	
Underground	0	0	0	0.0%	0	0	0	0.0%	
Pad Mounted	0	0	0	0.0%	0	0	0	0.0%	
Sub-Total	1	1	0	0.0%	0	0	0	0.0%	
Switching/Protective Devices									
Overhead	0	0	0	0.0%	0	0	0	0.0%	
Underground	0	1	0	0.0%	0	0	0	0.0%	
Pad Mounted	0	0	0	0.0%	0	0	0	0.0%	
Sub-Total	0	1	0	0.0%	0	0	0	0.0%	
Regulators									
Overhead	0	0	0	0.0%	0	0	0	0.0%	
Underground	0	0	0	0.0%	0	0	0	0.0%	
Pad Mounted	0	0	0	0.0%	0	0	0	0.0%	
Sub-Total	0	0	0	0.0%	0	0	0	0.0%	
Capacitors									
Overhead	0	0	0	0.0%	0	0	0	0.0%	
Underground	0	0	0	0.0%	0	0	0	0.0%	
Pad Mounted	0	0	0	0.0%	0	0	0	0.0%	
Sub-Total	0	0	0	0.0%	0	0	0	0.0%	
Conductors, Cables									
Overhead (Conductor Miles)	0	0	0	0.0%	0	0	0	0.0%	
Street Lights									
	0	0	0	0.0%	0	0	0	0.0%	
Wood Poles									
	0	52	0	0.0%	0	0	0	0.0%	
Total	1	54	0	0.0%	0	0	0	0.0%	
(1) Percentage of remaining Corrective Actions									

**General Order No. 165, Inspection Cycles For Electric Distribution Facilities
1998 Annual Report
Bishop District**

Distribution Equipment	1999 Inspections					1999 Corrective Actions		
	Detail/Intr	1999 Planned		Total	'98 Balance	1999	Total	
	'98 Balance Remaining	Patrol (1)	Intrusive	Planned	Remaining	Planned (2)	Planned	
Transformers								
Overhead	0	0	0	0	0	0	0	
Underground	0	0	10	10	0	0	0	
Pad Mounted	0	0	33	33	0	0	0	
Sub-Total	0	0	43	43	0	0	0	
Switching/Protective Devices								
Overhead	0	0	0	0	0	0	0	
Underground	0	0	43	43	0	0	0	
Pad Mounted	0	0	16	16	0	0	0	
Sub-Total	0	0	59	59	0	0	0	
Regulators								
Overhead	0	0	0	0	0	0	0	
Underground	0	0	0	0	0	0	0	
Pad Mounted	0	0	0	0	0	0	0	
Sub-Total	0	0	0	0	0	0	0	
Capacitors								
Overhead	0	0	0	0	0	0	0	
Underground	0	0	0	0	0	0	0	
Pad Mounted	0	0	0	0	0	0	0	
Sub-Total	0	0	0	0	0	0	0	
Conductors, Cables								
Overhead (Conductor Miles)	0	0	0	0	0	0	0	
Street Lights								
	N/A	494	N/A	494	0	0	0	
Wood Poles								
	0	0	0	0	0	3	3	
Total	0	494	102	596	0	3	3	
(1) District is not required to patrol circuits in 1999.								
100% of street lights are planned to be patrolled in 1999.								
(2) Corrective actions planned to be completed in 1999 based on items found through previous inspections.								



General Order No. 165, Inspection Cycles For Electric Distribution Facilities
1998 Annual Report
Ridgecrest District

		Inspection Cycles						1998		Circuits				
		(Maximum Intervals in Years)												
Distribution Equipment	Patrol	Urban		Rural		Detailed		Instructive		Total Inventory	Total Circuits	Required	Patrolled (%)	%
		Urban	Rural	Urban	Rural	Urban	Rural	Urban	Rural					
Transformers														
Overhead	1	2	5	5	5	5	5	5	5	4,829				
Underground	1	2	3	3	3	3	3	3	3	401				
Pad Mounted	1	2	5	5	5	5	5	5	5	820				
Sub-Total										6,050				
Switching/Protective Devices														
Overhead	1	2	5	5	5	5	5	5	5	33				
Underground	1	2	3	3	3	3	3	3	3	134				
Pad Mounted	1	2	5	5	5	5	5	5	5	72				
Sub-Total										239				
Regulators														
Overhead	1	2	5	5	5	5	5	5	5	2				
Underground	1	2	3	3	3	3	3	3	3	0				
Pad Mounted	1	2	5	5	5	5	5	5	5	0				
Sub-Total										2				
Capacitors														
Overhead	1	2	5	5	5	5	5	5	5	92				
Underground	1	2	3	3	3	3	3	3	3	0				
Pad Mounted	1	2	5	5	5	5	5	5	5	0				
Sub-Total										92				
Conductors, Cables														
Overhead (Conductor Miles)	1	2	5	5	5	5	5	5	5	2,816				
Street Lights	1	2	5	5	5	5	5	5	5	2,499				
Wood Poles	1	2	5	5	5	5	5	5	5	20,810				
Total										32,508	50	33	35	100%
(1) For 1998, SCE patrolled circuits to conduct simple visual inspections of distribution facilities. Underground structures and equipment are not opened on Circuit Patrol Inspections.														

**General Order No. 165, Inspection Cycles For Electric Distribution Facilities
1998 Annual Report
Ridgecrest District**

		1998			Inspections (1),(2)		Patrol	Explanation For Balance (> 0)	Recovery Date
		Planned	Complete	Balance Remaining					
Distribution Equipment									
Transformers									
	Overhead	3,187	3,380	0					
	Underground	265	281	0					
	Pad Mounted	541	574	0					
	Sub-Total	3,993	4,235	0					
Switching/Protective Devices									
	Overhead	22	23	0					
	Underground	88	94	0					
	Pad Mounted	48	50	0					
	Sub-Total	158	167	0					
Regulators									
	Overhead	1	1	0					
	Underground	0	0	0					
	Pad Mounted	0	0	0					
	Sub-Total	1	1	0					
Capacitors									
	Overhead	61	64	0					
	Underground	0	0	0					
	Pad Mounted	0	0	0					
	Sub-Total	61	64	0					
Conductors, Cables									
	Overhead (Conductor Miles)	1,859	1,971	0					
Street Lights									
		0	2,499	0					
Wood Poles									
		13,735	14,567	0					
	Total	19,806	23,505	0					
<p>(1) Planned Patrol Inspections are based on Required Circuit Patrols (excl Streetlights).</p> <p>Planned amounts are different from 1997 G0 165 Report due to changes in the inventory and the quantity of required circuit patrols</p> <p>(2) Completed Patrol Inspections are based on the percentage of total patrolled circuits (excl Streetlights).</p>									

General Order No. 165, Inspection Cycles For Electric Distribution Facilities
1998 Annual Report
Ridgecrest District

		1998		
		Inspections (1)(2)		
		Summary		
Distribution Equipment		Planned	Complete	Balance Remaining
Transformers				
Overhead		3,187	3,380	0
Underground		283	312	0
Pad Mounted		632	694	0
	Sub-Total	4,102	4,386	0
Switching/Protective Devices				
Overhead		22	23	0
Underground		159	165	0
Pad Mounted		48	100	0
	Sub-Total	229	288	0
Regulators				
Overhead		1	1	0
Underground		0	0	0
Pad Mounted		0	0	0
	Sub-Total	1	1	0
Capacitors				
Overhead		61	64	0
Underground		0	0	0
Pad Mounted		0	0	0
	Sub-Total	61	64	0
Conductors, Cables				
Overhead (Conductor Miles)		1,859	1,971	0
Street Lights		0	2,499	0
Wood Poles		13,735	14,649	0
	Total	19,986	23,859	0
<p>(1) Total inspections may exceed total inventory of an asset as equipment may be inspected twice in a year.</p> <p>(2) Includes Patrols + Details/Intrusives.</p>				

General Order No. 165, Inspection Cycles For Electric Distribution Facilities
1998 Annual Report
Ridgecrest District

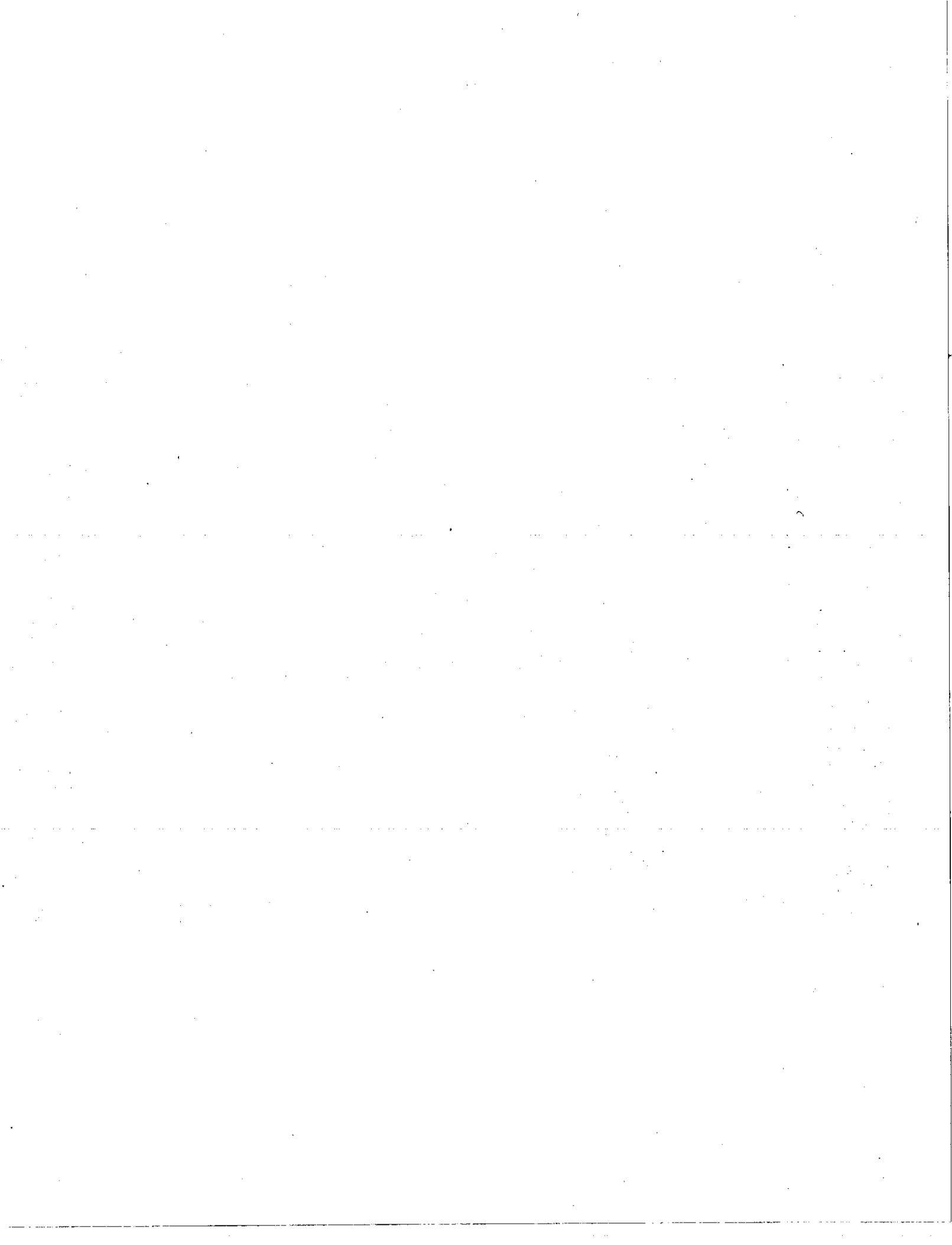
		1998				Corrective Action			
		Level 4		Level 5					
Distribution Equipment	Scheduled	Completed	Balance Remaining	% (1)	Scheduled	Completed	Balance Remaining	% (1)	
Transformers									
Overhead	1	1	0	0.0%	0	1	0	0.0%	
Underground	0	0	0	0.0%	0	0	0	0.0%	
Pad Mounted	0	0	0	0.0%	0	0	0	0.0%	
Sub-Total	1	1	0	0.0%	0	1	0	0.0%	
Switching/Protective Devices									
Overhead	0	1	0	0.0%	0	0	0	0.0%	
Underground	1	2	0	0.0%	0	0	0	0.0%	
Pad Mounted	0	0	0	0.0%	0	0	0	0.0%	
Sub-Total	1	3	0	0.0%	0	0	0	0.0%	
Regulators									
Overhead	0	0	0	0.0%	0	0	0	0.0%	
Underground	0	0	0	0.0%	0	0	0	0.0%	
Pad Mounted	0	0	0	0.0%	0	0	0	0.0%	
Sub-Total	0	0	0	0.0%	0	0	0	0.0%	
Capacitors									
Overhead	0	14	0	0.0%	0	0	0	0.0%	
Underground	0	0	0	0.0%	0	0	0	0.0%	
Pad Mounted	0	0	0	0.0%	0	0	0	0.0%	
Sub-Total	0	14	0	0.0%	0	0	0	0.0%	
Conductors, Cables									
Overhead (Conductor Miles)	0	0	0	0.0%	0	0	0	0.0%	
Street Lights									
	0	0	0	0.0%	0	0	0	0.0%	
Wood Poles									
	0	21	0	0.0%	0	1	0	0.0%	
Total	2	39	0	0.0%	0	2	0	0.0%	
		(1) Percentage of remaining Corrective Actions							

General Order No. 165, Inspection Cycles For Electric Distribution Facilities
1998 Annual Report
Ridgecrest District

		1998		Corrective Action		Summary ⁽²⁾		Explanation For Balance (> 0)		Recovery Date
Distribution Equipment	Scheduled	Completed	Balance Remaining	% ⁽¹⁾						
Transformers										
Overhead	1	2	0	0.0%						
Underground	0	0	0	0.0%						
Pad Mounted	0	0	0	0.0%						
Sub-Total	1	2	0	0.0%						
Switching/Protective Devices										
Overhead	0	1	0	0.0%						
Underground	1	2	0	0.0%						
Pad Mounted	0	0	0	0.0%						
Sub-Total	1	3	0	0.0%						
Regulators										
Overhead	0	0	0	0.0%						
Underground	0	0	0	0.0%						
Pad Mounted	0	0	0	0.0%						
Sub-Total	0	0	0	0.0%						
Capacitors										
Overhead	0	14	0	0.0%						
Underground	0	0	0	0.0%						
Pad Mounted	0	0	0	0.0%						
Sub-Total	0	14	0	0.0%						
Conductors, Cables										
Overhead (Conductor Miles)	0	.0	0	0.0%						
Street Lights										
	0	0	0	0.0%						
Wood Poles										
	0	22	0	0.0%						
Total	2	41	0	0.0%						
(1) Percentage of remaining Corrective Actions										
(2) Summary = Condition Level 4 + condition Level 5 from Page 6.										

**General Order No. 165, Inspection Cycles For Electric Distribution Facilities
1998 Annual Report
Ridgecrest District**

	1999						
	Inspections			Corrective Actions			
	Detail/Intru '98 Balance Remaining	1999 Planned Patrol (1)	Detail/ Intrusive Planned	Total Planned	'98 Balance Remaining	1999 Planned (2)	Total Planned
Distribution Equipment							
Transformers							
Overhead	0	1,642	0	1,642	0	0	0
Underground	0	136	272	408	0	0	0
Pad Mounted	0	279	48	327	0	0	0
Sub-Total	0	2,057	320	2,377	0	0	0
Switching/Protective Devices							
Overhead	0	11	0	11	0	0	0
Underground	0	46	44	90	0	0	0
Pad Mounted	0	24	13	37	0	0	0
Sub-Total	0	81	57	138	0	0	0
Regulators							
Overhead	0	1	0	1	0	0	0
Underground	0	0	0	0	0	0	0
Pad Mounted	0	0	0	0	0	0	0
Sub-Total	0	1	0	1	0	0	0
Capacitors							
Overhead	0	31	0	31	0	0	0
Underground	0	0	0	0	0	0	0
Pad Mounted	0	0	0	0	0	0	0
Sub-Total	0	31	0	31	0	0	0
Conductors, Cables							
Overhead (Conductor Miles)	0	957	0	957	0	0	0
Street Lights							
	N/A	0	N/A	0	0	0	0
Wood Poles							
	0	7,075	0	7,075	0	2	2
Total	0	10,203	377	10,580	0	2	2
	(1) District is required to patrol 34% of its circuits in 1999.						
	No street lights are planned to be patrolled in 1999.						
	(2) Corrective actions planned to be completed in 1999 based on items found through previous inspections.						



**General Order No. 165, Inspection Cycles For Electric Distribution Facilities
1998 Annual Report
Blythe District**

		1998			Recovery Date
		Inspections			
		Patrol			
Distribution Equipment	Planned (1)	Complete (2)	Balance Remaining	Explanation For Balance (> 0)	
Transformers					
Overhead	169	3,287	0		
Underground	5	92	0		
Pad Mounted	19	366	0		
Sub-Total	192	3,745	0		
Switching/Protective Devices					
Overhead	8	152	0		
Underground	1	22	0		
Pad Mounted	2	46	0		
Sub-Total	11	220	0		
Regulators					
Overhead	0	4	0		
Underground	0	0	0		
Pad Mounted	0	0	0		
Sub-Total	0	4	0		
Capacitors					
Overhead	4	79	0		
Underground	0	0	0		
Pad Mounted	0	0	0		
Sub-Total	4	79	0		
Conductors, Cables					
Overhead (Conductor Miles)	106	2,070	0		
Street Lights					
	0	1,185	0		
Wood Poles					
	691	13,473	0		
Total	1,005	20,776	0		
<p>(1) Planned Patrol Inspections are based on Required Circuit Patrols (excl Streetlights).</p> <p>Planned amounts are different from 1997 GO 165 Report due to changes in the inventory and the quantity of required circuit patrols</p>					
<p>(2) Completed Patrol Inspections are based on the percentage of total patrolled circuits (excl Streetlights).</p>					

General Order No. 165, Inspection Cycles For Electric Distribution Facilities
1998 Annual Report
Blythe District

		1998		
		Inspections ⁽¹⁾⁽²⁾		
		Summary		
		Planned	Complete	Balance Remaining
Distribution Equipment				
Transformers				
	Overhead	169	3,287	0
	Underground	15	104	0
	Pad Mounted	57	407	0
	Sub-Total	240	3,798	0
Switching/Protective Devices				
	Overhead	8	152	0
	Underground	30	51	0
	Pad Mounted	10	75	0
	Sub-Total	48	278	0
Regulators				
	Overhead	0	4	0
	Underground	0	0	0
	Pad Mounted	0	0	0
	Sub-Total	0	4	0
Capacitors				
	Overhead	4	79	0
	Underground	0	0	0
	Pad Mounted	0	0	0
	Sub-Total	4	79	0
Conductors, Cables				
	Overhead (Conductor Miles)	106	2,070	0
Street Lights				
		0	1,185	0
Wood Poles				
		986	14,050	0
	Total	1,385	21,464	0
(1) Total inspections may exceed total inventory of an asset as equipment may be inspected twice in a year.				
(2) Includes Patrols + Details/Intrusives.				

General Order No. 165, Inspection Cycles For Electric Distribution Facilities
1998 Annual Report
Blythe District

	1999				Corrective Actions		
	Detail/Intru '98 Balance Remaining	1999 Planned Patrol (1)	Detail/ Intrusive	Total Planned	'98 Balance Remaining	1999 Planned	Total Planned
Distribution Equipment							
Transformers							
Overhead	0	0	0	0	0	0	0
Underground	0	0	40	40	0	0	0
Pad Mounted	0	0	29	29	0	0	0
Sub-Total	0	0	69	69	0	0	0
Switching/Protective Devices							
Overhead	0	0	0	0	0	0	0
Underground	0	0	8	8	0	0	0
Pad Mounted	0	0	4	4	0	0	0
Sub-Total	0	0	12	12	0	0	0
Regulators							
Overhead	0	0	0	0	0	0	0
Underground	0	0	0	0	0	0	0
Pad Mounted	0	0	0	0	0	0	0
Sub-Total	0	0	0	0	0	0	0
Capacitors							
Overhead	0	0	0	0	0	0	0
Underground	0	0	0	0	0	0	0
Pad Mounted	0	0	0	0	0	0	0
Sub-Total	0	0	0	0	0	0	0
Conductors, Cables							
Overhead (Conductor Miles)	0	0	0	0	0	0	0
Street Lights							
N/A	N/A	0	N/A	0	0	0	0
Wood Poles							
Overhead	0	0	0	0	0	1	1
Total	0	0	81	81	0	1	1
(1) District is not required to patrol any of its circuits in 1999. No street lights are planned to be patrolled in 1999.							
(2) Corrective actions planned to be completed in 1999 based on items found through previous inspections.							