

February 27, 2015

***VIA ELECTRONIC MAIL
AND OVERNIGHT DELIVERY***

Timothy Sullivan
Interim Executive Director
California Public Utilities Commission
505 Van Ness Avenue
San Francisco, CA 94102-3298

**RE: PacifiCorp's (U-901-E) Report on System Reliability as required by
Decision 96-09-045 / Application 94-12-005 / Investigation 95-02-015**

Enclosed for filing is a copy of PacifiCorp's, d.b.a. Pacific Power, Report on System Reliability for the 2014 reporting period using the indices developed in Appendix A of Commission Decision (D.) 96-09-045 as amended by PacifiCorp's January 14, 2011 Advice Letter Filing 433-E.

As noted in your letter to PacifiCorp dated August 27, 2010, Southern California Edison recommended the adoption of the Institute of Electrical and Electronic Engineers (IEEE) standard for definition of major event days which would 1) provide consistency in comparing reliability data from different utilities across the country, and 2) provide more objectivity in the determination of what major events are excludable for the purpose of calculating the reliability indices. The letter further stated that if PacifiCorp agreed with this proposal, the Company should submit an advice letter requesting this change. PacifiCorp supports the proposed use of IEEE Standard 1366-2003 to categorize major events and on January 14, 2011, filed Advice Letter 433-E requesting approval for making this change in its reporting requirements under D. 96-09-045. Advice Letter 433-E was approved by the Commission effective February 13, 2011.

As stated in Advice Letter 433-E, to smooth the transition to the new reporting criterion and to enable the comparison of values calculated under both methods, beginning with its March 2011 compliance filing PacifiCorp agreed to report using both methods through its March 1, 2014 compliance filing. However, PacifiCorp believes there is some benefit to stakeholders evaluating reliability in different contexts, including the legacy major event context, so it will continue to report reliability results using both methods.

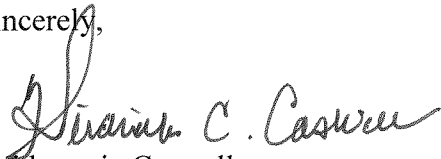
California Public Utilities Commission

February 27, 2015

Page 2

The Company would be interested in discussing these results and reliability in general. Please contact me to set up a time that fits in your schedule at (503) 813-6216.

Sincerely,

A handwritten signature in cursive script that reads "Heidemarie C. Caswell".

Heidemarie Caswell

Director, Transmission & Distribution Asset Performance

Enclosure

cc: Ed Randolph – CPUC
David K. Lee – CPUC
Alok Kumar – CPUC-SED

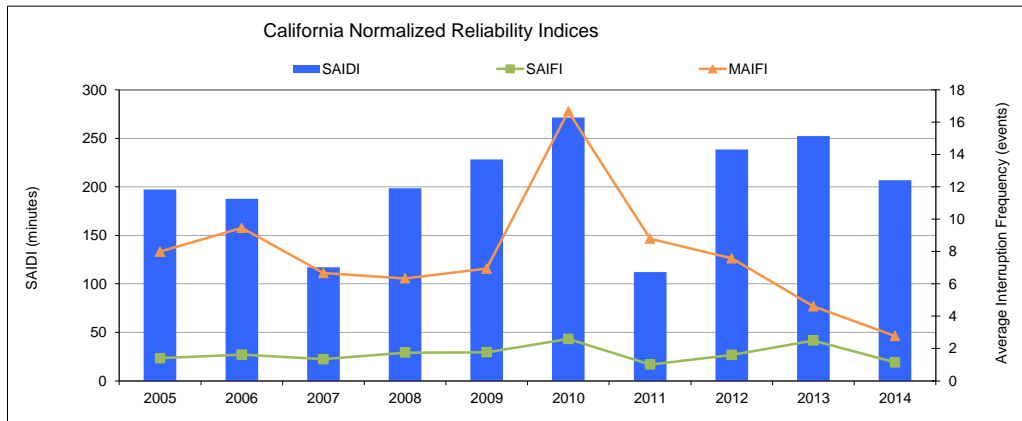
**PACIFIC POWER'S CALIFORNIA SYSTEM-WIDE
RELIABILITY INDICES**

**California PUC
Annual Reliability Report for CY 2014**

**Pacific Power CALIFORNIA SYSTEM-WIDE RELIABILITY INDICES
2005 - 2014**

Year	Major Events Included ¹				Filed Major Events Excluded (2.5 & P1366)				Major Events Excluded 10% method (D96-09-045)				Major Events Included Adjusted "Normalized" Performance				Major Events Excluded Adjusted "Normalized" Performance			
	SAIDI	SAIFI	CAIDI	MAIFI	SAIDI	SAIFI	CAIDI	MAIFI ²	SAIDI	SAIFI	CAIDI	MAIFI	SAIDI	SAIFI	CAIDI	MAIFI	SAIDI	SAIFI	CAIDI	MAIFI
2005	594.199	3.365	176.6	7.990	217.531	1.531	142.1		197.185	1.400	140.846		594.199	3.365	176.582	7.990	197.185	1.400	140.8	7.990
2006	622.097	4.522	137.6	9.460	263.095	2.879	91.4		187.757	1.624	115.614		622.097	4.522	137.571	9.460	187.757	1.624	115.6	9.460
2007	516.173	3.670	140.6	6.670	200.096	2.590	77.3		117.240	1.337	87.659		516.173	3.670	140.647	6.670	117.240	1.337	87.7	6.670
2008	931.712	4.113	226.5	6.340	318.136	2.341	135.9		198.476	1.751	113.350		931.712	4.113	226.529	6.340	198.476	1.751	113.4	6.340
2009	330.524	2.522	131.1	6.940	275.747	2.074	133.0		228.247	1.770	128.953		330.524	2.522	131.056	6.940	228.247	1.770	129.0	6.940
2010	1188.030	4.553	260.9	16.670	452.440	3.832	118.1		271.480	2.592	104.738		1188.030	4.553	260.933	16.670	271.480	2.592	104.7	16.670
2011	277.210	2.296	120.7	8.795	277.210	2.296	120.7		112.210	1.012	110.879		277.210	2.296	120.736	8.795	112.210	1.012	110.9	8.795
2012	501.812	2.990	167.8	7.575	259.558	2.240	115.9		238.492	1.606	148.501		501.812	2.990	167.830	7.575	238.492	1.606	148.5	7.575
2013	317.344	2.857	111.1	4.613	211.911	2.240	94.6		252.394	2.497	101.079		317.344	2.857	111.076	4.613	252.394	2.497	101.1	4.613
2014	432.381	1.979	218.5	2.778	235.977	1.426	165.5		206.774	1.140	181.381		432.381	1.979	218.485	2.778	206.774	1.140	181.4	2.778
10-Year Average Performance													571.148	3.287	169.144	7.783	201.026	1.673	123.3	7.783

NOTES:
 1 - Excludes outages that are customer requested, pre-arranged or resulting from a failure of another company's system.
 2 - Prior to 2005 the company reported and calculated MAIFI by use of a manual breaker counter algorithm; in the interim, the method of calculating MAIFI has been modified to be industry-standard compliant, at substation breakers that are outfitted with SCADA. For non-SCADA breakers MAIFI is not reasonably calculated using breaker counter readings. The modified calculations were performed retrospectively to prior years' data to correct historic results. These results are inclusive of outages that occurred during major events.



**PACIFIC POWER'S CIRCUITS WITH MORE THAN
ONE SUSTAINED OUTAGE PER MONTH**

**California PUC
Annual Reliability Report for CY 2014**

**PACIFIC POWER DISTRIBUTION CIRCUITS AVERAGING MORE THAN 1 SUSTAINED OUTAGE PER MONTH
2005 - 2014**

Notes: Count represents interruptions to the circuit or to a segment of the circuit. Excludes major events and prearranged outages.
Effective for the data reported for 2010, an added column shows the counts that conform to the reporting requirements in D.96-09-045. Circuits which meet the reporting requirement are highlighted and the count shown in the column headed "Interruptions at Last Step-Down Transformer Conforming to 5. Reporting". In explanation, this detail relates to the interrupting device at the step-down transformer (not service transformer); all prior year data over-state the number of circuits that meet the requirement of this report, since previously sustained outages were not able to be distinguished at this level.

Year	Circuit ID	Circuit Name	Op Area Name	Interruption Count	Interruptions at Last Step-Down Transformer Conforming to 5. Reporting
2005	5L97	CEDARVILLE	ALTURAS	20	
2005	5L87	HYDRO	ALTURAS	18	
2005	5R152	PINE GROVE	CRESCENT CITY	55	
2005	5R153	DEAD LAKE	CRESCENT CITY	41	
2005	5R194	INDUSTRIAL	CRESCENT CITY	37	
2005	5R190	SHIP ASHORE	CRESCENT CITY	34	
2005	5R165	SOUTH BANK	CRESCENT CITY	28	
2005	5R160	CRESCENT CTR	CRESCENT CITY	27	
2005	5R147	LAKE EARL	CRESCENT CITY	26	
2005	5R171	SAWMILL	CRESCENT CITY	25	
2005	5R167	HWY 101	CRESCENT CITY	24	
2005	5R195	CITY	CRESCENT CITY	20	
2005	5R151	ROOSEVELT	CRESCENT CITY	15	
2005	5G83	BEL-AIR	MT SHASTA	49	
2005	5G45	SHASTINA	MT SHASTA	41	
2005	5G77	BLACK BUTTE	MT SHASTA	40	
2005	5G79	PIONEER (MT SHASTA)	MT SHASTA	39	
2005	5G93	SCHOOL-TOWN	MT SHASTA	14	
2005	5L83	TOWN (TULELAKE)	TULELAKE	41	
2005	5L68	NEWELL	TULELAKE	35	
2005	5L77	SOUTH (MCDOEL)	TULELAKE	29	
2005	5L82	EAST	TULELAKE	24	
2005	4L3	RED ROCK (MACDOEL)	TULELAKE	21	
2005	5L63	TOWN (DORRIS)	TULELAKE	21	
2005	5G63	CALLAHAN	YREKA	41	
2005	5G5	MAIN STREET (GREENHORN)	YREKA	40	
2005	5G1	GREENVIEW	YREKA	39	
2005	5G40	SCOTT BAR	YREKA	39	
2005	5G2	PEACH ORCHRD	YREKA	37	
2005	5G21	GAZELLE-GRDA	YREKA	33	
2005	4G1	LAKE (SHASTINA)	YREKA	31	
2005	5G16	TOWN (HAPPY CAMP)	YREKA	29	
2005	5G23	WHITE MT. (CA)	YREKA	27	
2005	5G7	FAIRLANE	YREKA	27	
2005	5G149	HIGHLAND	YREKA	26	
2005	5G39	SEIAD CRK	YREKA	26	
2005	5G41	ETNA TIE	YREKA	26	
2005	5G163	LENNOX	YREKA	25	
2005	5G35	AIR FORCE	YREKA	25	
2005	5G19	TOWN (HORN BROOK) (CA)	YREKA	24	
2005	5G33	TOWN-AGER	YREKA	18	
2005	8G27	HAMBURG	YREKA	16	

Note: A sustained outage does not necessarily mean the entire circuit was without power.

**California PUC
Annual Reliability Report for CY 2014**

Year	Circuit ID	Circuit Name	Op Area Name	Interruption Count	Interruptions at Last Step-Down Transformer Conforming to 5. Reporting
2006	5L87	HYDRO	ALTURAS	17	
2006	5L86	INDUST/TOWN	ALTURAS	14	
2006	5R152	PINE GROVE	CRESCENT CITY	59	
2006	5R160	CRESCENT CTR	CRESCENT CITY	38	
2006	5R171	SAWMILL	CRESCENT CITY	30	
2006	5R195	CITY	CRESCENT CITY	29	
2006	5R194	INDUSTRIAL	CRESCENT CITY	28	
2006	5R190	SHIP ASHORE	CRESCENT CITY	24	
2006	5R167	HWY 101	CRESCENT CITY	22	
2006	5R151	ROOSEVELT	CRESCENT CITY	20	
2006	5R170	NORTH (YUROK)	CRESCENT CITY	20	
2006	5R153	DEAD LAKE	CRESCENT CITY	19	
2006	5R165	SOUTH BANK	CRESCENT CITY	16	
2006	5R147	LAKE EARL	CRESCENT CITY	14	
2006	7R94	LAUFF	CRESCENT CITY	13	
2006	5G83	BEL-AIR	MT SHASTA	63	
2006	5G77	BLACK BUTTE	MT SHASTA	54	
2006	5G93	SCHOOL-TOWN	MT SHASTA	35	
2006	5G79	PIONEER (MT SHASTA)	MT SHASTA	31	
2006	5G45	SHASTINA	MT SHASTA	30	
2006	5G69	SHASTA SPR	MT SHASTA	20	
2006	5G99	SOUTH (SHOTGUN CREEK)	MT SHASTA	14	
2006	7G75	S DUNSMUIR	MT SHASTA	13	
2006	5L83	TOWN (TULELAKE)	TULELAKE	60	
2006	5L82	EAST	TULELAKE	38	
2006	5L68	NEWELL	TULELAKE	32	
2006	4L3	RED ROCK (MACDOEL)	TULELAKE	24	
2006	5L63	TOWN (DORRIS)	TULELAKE	14	
2006	5G41	ETNA TIE	YREKA	48	
2006	5G2	PEACH ORCHRD	YREKA	44	
2006	5G21	GAZELLE-GRDA	YREKA	38	
2006	5G19	TOWN (HORN BROOK) (CA)	YREKA	35	
2006	4G1	LAKE (SHASTINA)	YREKA	34	
2006	5G1	GREENVIEW	YREKA	33	
2006	5G16	TOWN (HAPPY CAMP)	YREKA	33	
2006	5G5	MAIN STREET (GREENHORN)	YREKA	32	
2006	5G149	HIGHLAND	YREKA	31	
2006	5G35	AIR FORCE	YREKA	31	
2006	5G63	CALLAHAN	YREKA	30	
2006	5G7	FAIRLANE	YREKA	30	
2006	5G33	TOWN-AGER	YREKA	21	
2006	5G23	WHITE MT. (CA)	YREKA	20	
2006	5G40	SCOTT BAR	YREKA	19	
2006	5G39	SEIAD CRK	YREKA	15	

Note: A sustained outage does not necessarily mean the entire circuit was without power.

**California PUC
Annual Reliability Report for CY 2014**

Year	Circuit ID	Circuit Name	Op Area Name	Interruption Count	Interruptions at Last Step-Down Transformer Conforming to 5. Reporting
2007	5L87	HYDRO	ALTURAS	20	
2007	5R147	LAKE EARL	CRESCENT CITY	23	
2007	5R151	ROOSEVELT	CRESCENT CITY	22	
2007	5R152	PINE GROVE	CRESCENT CITY	52	
2007	5R153	DEAD LAKE	CRESCENT CITY	19	
2007	5R160	CRESCENT CTR	CRESCENT CITY	23	
2007	5R165	SOUTH BANK	CRESCENT CITY	18	
2007	5R167	HWY 101	CRESCENT CITY	18	
2007	5R190	SHIP ASHORE	CRESCENT CITY	27	
2007	5R194	INDUSTRIAL	CRESCENT CITY	32	
2007	5R195	CITY	CRESCENT CITY	22	
2007	7R94	LAUFF	CRESCENT CITY	28	
2007	5G45	SHASTINA	MT SHASTA	35	
2007	5G69	SHASTA SPR	MT SHASTA	44	
2007	5G77	BLACK BUTTE	MT SHASTA	49	
2007	5G79	PIONEER (MT SHASTA)	MT SHASTA	33	
2007	5G83	BEL-AIR	MT SHASTA	68	
2007	5G93	SCHOOL-TOWN	MT SHASTA	21	
2007	4L3	RED ROCK (MACDOEL)	TULELAKE	35	
2007	5L63	TOWN (DORRIS)	TULELAKE	20	
2007	5L64	CAL-ORE	TULELAKE	14	
2007	5L68	NEWELL	TULELAKE	28	
2007	5L77	SOUTH (MCDOEL)	TULELAKE	19	
2007	5L82	EAST	TULELAKE	19	
2007	5L83	TOWN (TULELAKE)	TULELAKE	77	
2007	4G1	LAKE (SHASTINA)	YREKA	58	
2007	5G149	HIGHLAND	YREKA	43	
2007	5G151	CENTER TOWN	YREKA	14	
2007	5G16	TOWN (HAPPY CAMP)	YREKA	32	
2007	5G163	LENNOX	YREKA	15	
2007	5G19	TOWN (HORN BROOK) (CA)	YREKA	48	
2007	5G2	PEACH ORCHRD	YREKA	39	
2007	5G21	GAZELLE-GRDA	YREKA	71	
2007	5G23	WHITE MT. (CA)	YREKA	40	
2007	5G31	SOUTH (MONTAGUE)	YREKA	19	
2007	5G33	TOWN-AGER	YREKA	27	
2007	5G35	AIR FORCE	YREKA	48	
2007	5G39	SEIAD CRK	YREKA	21	
2007	5G40	SCOTT BAR	YREKA	21	
2007	5G41	ETNA TIE	YREKA	23	
2007	5G5	MAIN STREET (GREENHORN)	YREKA	55	
2007	5G63	CALLAHAN	YREKA	34	
2007	5G7	FAIRLANE	YREKA	42	
2007	6G25	LITTLE SHASTA	YREKA	31	

Note: A sustained outage does not necessarily mean the entire circuit was without power.

**California PUC
Annual Reliability Report for CY 2014**

Year	Circuit ID	Circuit Name	Op Area Name	Interruption Count	Interruptions at Last Step-Down Transformer Conforming to 5. Reporting
2008	5L87	HYDRO	ALTURAS	18	
2008	5R147	LAKE EARL	CRESCENT CITY	28	
2008	5R151	ROOSEVELT	CRESCENT CITY	20	
2008	5R152	PINE GROVE	CRESCENT CITY	38	
2008	5R165	SOUTH BANK	CRESCENT CITY	17	
2008	5R167	HWY 101	CRESCENT CITY	28	
2008	5R171	SAWMILL	CRESCENT CITY	21	
2008	5R190	SHIP ASHORE	CRESCENT CITY	23	
2008	5R194	INDUSTRIAL	CRESCENT CITY	22	
2008	5R195	CITY	CRESCENT CITY	18	
2008	5G45	SHASTINA	MT SHASTA	22	
2008	5G69	SHASTA SPR	MT SHASTA	15	
2008	5G77	BLACK BUTTE	MT SHASTA	33	
2008	5G79	PIONEER (MT SHASTA)	MT SHASTA	35	
2008	5G83	BEL-AIR	MT SHASTA	65	
2008	5G93	SCHOOL-TOWN	MT SHASTA	25	
2008	5G99	SOUTH (SHOTGUN CREEK)	MT SHASTA	19	
2008	5L63	TOWN (DORRIS)	TULELAKE	16	
2008	5L64	CAL-ORE	TULELAKE	18	
2008	5L68	NEWELL	TULELAKE	34	
2008	5L73	LAVA BEDS	TULELAKE	14	
2008	5L77	SOUTH (MCDOEL)	TULELAKE	17	
2008	5L78	SHEEP MTN	TULELAKE	15	
2008	5L82	EAST	TULELAKE	38	
2008	5L83	TOWN (TULELAKE)	TULELAKE	57	
2008	4G1	LAKE (SHASTINA)	YREKA	21	
2008	5G149	HIGHLAND	YREKA	30	
2008	5G16	TOWN (HAPPY CAMP)	YREKA	20	
2008	5G163	LENNOX	YREKA	14	
2008	5G19	TOWN (HORN BROOK) (CA)	YREKA	35	
2008	5G2	PEACH ORCHRD	YREKA	45	
2008	5G21	GAZELLE-GRDA	YREKA	30	
2008	5G23	WHITE MT. (CA)	YREKA	27	
2008	5G33	TOWN-AGER	YREKA	14	
2008	5G35	AIR FORCE	YREKA	23	
2008	5G39	SEIAD CRK	YREKA	21	
2008	5G40	SCOTT BAR	YREKA	18	
2008	5G41	ETNA TIE	YREKA	23	
2008	5G5	MAIN STREET (GREENHORN)	YREKA	15	
2008	5G6	DAGGETT	YREKA	24	
2008	5G63	CALLAHAN	YREKA	18	
2008	5G7	FAIRLANE	YREKA	21	

Note: A sustained outage does not necessarily mean the entire circuit was without power.

**California PUC
Annual Reliability Report for CY 2014**

Year	Circuit ID	Circuit Name	Op Area Name	Interruption Count	Interruptions at Last Step-Down Transformer Conforming to 5. Reporting
2009	5L86	INDUST/TOWN	ALTURAS	13	
2009	5L87	HYDRO	ALTURAS	16	
2009	5R151	ROOSEVELT	CRESCENT CITY	16	
2009	5R152	PINE GROVE	CRESCENT CITY	41	
2009	5R153	DEAD LAKE	CRESCENT CITY	18	
2009	5R147	LAKE EARL	CRESCENT CITY	27	
2009	5R160	CRESCENT CTR	CRESCENT CITY	36	
2009	5R194	INDUSTRIAL	CRESCENT CITY	18	
2009	5R195	CITY	CRESCENT CITY	13	
2009	5R165	SOUTH BANK	CRESCENT CITY	29	
2009	5R167	HWY 101	CRESCENT CITY	20	
2009	5R170	NORTH (YUROK)	CRESCENT CITY	18	
2009	5R171	SAWMILL	CRESCENT CITY	23	
2009	8G65	CASTELLA	MT SHASTA	21	
2009	8G103	DOG CREEK	MT SHASTA	18	
2009	5G93	SCHOOL-TOWN	MT SHASTA	22	
2009	5G77	BLACK BUTTE	MT SHASTA	63	
2009	5G79	PIONEER (MT SHASTA)	MT SHASTA	41	
2009	5G97	NORTH (SHOTGUN CREEK)	MT SHASTA	23	
2009	5G99	SOUTH (SHOTGUN CREEK)	MT SHASTA	17	
2009	5G83	BEL-AIR	MT SHASTA	66	
2009	5L63	TOWN (DORRIS)	TULELAKE	15	
2009	5L64	CAL-ORE	TULELAKE	17	
2009	4L3	RED ROCK (MACDOEL)	TULELAKE	32	
2009	5L77	SOUTH (MCDOEL)	TULELAKE	29	
2009	5L78	SHEEP MTN.	TULELAKE	24	
2009	5L68	NEWELL	TULELAKE	35	
2009	5L82	EAST	TULELAKE	32	
2009	5L83	TOWN (TULELAKE)	TULELAKE	58	
2009	5L73	LAVA BEDS	TULELAKE	16	
2009	5G23	WHITE MT. (CA)	YREKA	20	
2009	5G2	PEACH ORCHRD	YREKA	45	
2009	5G5	MAIN STREET (GREENHORN)	YREKA	20	
2009	5G7	FAIRLANE	YREKA	19	
2009	5G16	TOWN (HAPPY CAMP)	YREKA	22	
2009	5G19	TOWN (HORN BROOK) (CA)	YREKA	24	
2009	5G21	GAZELLE-GRDA	YREKA	40	
2009	5G33	TOWN-AGER	YREKA	13	
2009	5G35	AIR FORCE	YREKA	13	
2009	5G39	SEIAD CRK	YREKA	13	
2009	4G1	LAKE (SHASTINA)	YREKA	22	
2009	5G41	ETNA TIE	YREKA	30	
2009	5G149	HIGHLAND	YREKA	13	
2009	5G63	CALLAHAN	YREKA	23	

Note: A sustained outage does not necessarily mean the entire circuit was without power.

**California PUC
Annual Reliability Report for CY 2014**

Year	Circuit ID	Circuit Name	Op Area Name	Interruption Count	Interruptions at Last Step-Down Transformer Conforming to 5. Reporting
2010	5L87	HYDRO	ALTURAS	26	
2010	5R147	LAKE EARL	CRESCENT CITY	21	
2010	5R151	ROOSEVELT	CRESCENT CITY	25	
2010	5R152	PINE GROVE	CRESCENT CITY	34	
2010	5R153	DEAD LAKE	CRESCENT CITY	16	
2010	5R160	CRESCENT CTR	CRESCENT CITY	33	
2010	5R165	SOUTH BANK	CRESCENT CITY	23	
2010	5R167	HWY 101	CRESCENT CITY	33	
2010	5R170	NORTH (YUROK)	CRESCENT CITY	19	
2010	5R171	SAWMILL	CRESCENT CITY	27	
2010	5R194	INDUSTRIAL	CRESCENT CITY	27	
2010	5R195	CITY	CRESCENT CITY	18	
2010	5R370	Lilly	CRESCENT CITY	29	
2010	5R371	AZALEA	CRESCENT CITY	18	
2010	5G45	SHASTINA	MT SHASTA	20	
2010	5G69	SHASTA SPR	MT SHASTA	16	
2010	5G77	BLACK BUTTE	MT SHASTA	124	20
2010	5G79	PIONEER (MT SHASTA)	MT SHASTA	82	29
2010	5G83	BEL-AIR	MT SHASTA	83	13
2010	5G93	SCHOOL-TOWN	MT SHASTA	26	15
2010	5G97	NORTH (SHOTGUN CREEK)	MT SHASTA	34	
2010	5G99	SOUTH (SHOTGUN CREEK)	MT SHASTA	28	
2010	6G101	SNOWBUSH	MT SHASTA	16	
2010	8G65	CASTELLA	MT SHASTA	19	
2010	4L3	RED ROCK (MACDOEL)	TULELAKE	24	
2010	5L63	TOWN (DORRIS)	TULELAKE	23	
2010	5L68	NEWELL	TULELAKE	26	
2010	5L77	SOUTH (MCDOEL)	TULELAKE	19	
2010	5L82	EAST	TULELAKE	48	
2010	5L83	TOWN (TULELAKE)	TULELAKE	39	
2010	4G1	LAKE (SHASTINA)	YREKA	24	
2010	5G1	GREENVIEW	YREKA	17	
2010	5G149	HIGHLAND	YREKA	24	
2010	5G16	TOWN (HAPPY CAMP)	YREKA	45	13
2010	5G19	TOWN (HORN BROOK) (CA)	YREKA	30	
2010	5G2	PEACH ORCHRD	YREKA	53	
2010	5G21	GAZELLE-GRDA	YREKA	29	
2010	5G23	WHITE MT. (CA)	YREKA	35	
2010	5G31	SOUTH (MONTAGUE)	YREKA	13	
2010	5G33	TOWN-AGER	YREKA	17	
2010	5G35	AIR FORCE	YREKA	27	
2010	5G39	SEIAD CRK	YREKA	17	13
2010	5G40	SCOTT BAR	YREKA	17	
2010	5G41	ETNA TIE	YREKA	57	
2010	5G5	MAIN STREET (GREENHORN)	YREKA	37	
2010	5G63	CALLAHAN	YREKA	18	
2010	5G7	FAIRLANE	YREKA	25	
2010	6G25	LITTLE SHASTA	YREKA	18	

Note: A sustained outage does not necessarily mean the entire circuit was without power.

**California PUC
Annual Reliability Report for CY 2014**

Year	Circuit ID	Circuit Name	Op Area Name	Interruption Count	Interruptions at Last Step-Down Transformer Conforming to 5. Reporting
2011	5G83	BEL-AIR	MT SHASTA	62	
2011	5G77	BLACK BUTTE	MT SHASTA	58	
2011	5G79	PIONEER (MT SHASTA)	MT SHASTA	54	
2011	5G93	SCHOOL-TOWN	MT SHASTA	54	
2011	5G21	GAZELLE-GRDA	YREKA	52	
2011	5L83	TOWN (TULELAKE)	TULELAKE	44	
2011	5R152	PINE GROVE	CRESCENT CITY	41	
2011	5G16	TOWN (HAPPY CAMP)	YREKA	37	
2011	5G41	ETNA TIE	YREKA	36	
2011	5G7	FAIRLANE	YREKA	36	
2011	5G2	PEACH ORCHRD	YREKA	33	
2011	5L82	EAST	TULELAKE	32	
2011	5R370	Lilly	CRESCENT CITY	32	
2011	5L68	NEWELL	TULELAKE	31	
2011	5G19	TOWN (HORN BROOK) (CA)	YREKA	28	
2011	5R171	SAWMILL	CRESCENT CITY	27	
2011	4G1	LAKE (SHASTINA)	YREKA	26	
2011	5R147	LAKE EARL	CRESCENT CITY	26	
2011	5G149	HIGHLAND	YREKA	24	
2011	5R194	INDUSTRIAL	CRESCENT CITY	24	
2011	5G23	WHITE MT. (CA)	YREKA	23	
2011	5R170	NORTH (YUOK)	CRESCENT CITY	23	
2011	4L3	RED ROCK (MACDOEL)	TULELAKE	21	
2011	5G1	GREENVIEW	YREKA	20	
2011	5R160	CRESCENT CTR	CRESCENT CITY	20	
2011	5R195	CITY	CRESCENT CITY	20	
2011	5L87	HYDRO	ALTURAS	19	
2011	5R167	HWY 101	CRESCENT CITY	19	
2011	5G45	SHASTINA	MT SHASTA	18	
2011	5G40	SCOTT BAR	YREKA	17	
2011	5G63	CALLAHAN	YREKA	17	
2011	5R151	ROOSEVELT	CRESCENT CITY	17	
2011	5L78	SHEEP MTN.	TULELAKE	16	
2011	5R165	SOUTH BANK	CRESCENT CITY	15	
2011	5L97	CEDARVILLE	ALTURAS	14	
2011	5G33	TOWN-AGER	YREKA	13	
2011	5G5	MAIN STREET (GREENHORN)	YREKA	13	
2011	5G6	DAGGETT	YREKA	13	
2011	5R161	COOPER ST	CRESCENT CITY	13	

Note: A sustained outage does not necessarily mean the entire circuit was without power.

**California PUC
Annual Reliability Report for CY 2014**

Year	Circuit ID	Circuit Name	Op Area Name	Interruption Count	Interruptions at Last Step-Down Transformer Conforming to 5. Reporting
2012	5G77	BLACK BUTTE	MT SHASTA	59	
2012	5G83	BEL-AIR	MT SHASTA	56	
2012	5R147	LAKE EARL	CRESCENT CITY	39	
2012	5R167	HWY 101	CRESCENT CITY	34	
2012	5R152	PINE GROVE	CRESCENT CITY	33	
2012	5R160	CRESCENT CTR	CRESCENT CITY	31	
2012	5R370	Lilly	CRESCENT CITY	31	
2012	5G7	FAIRLANE	YREKA	29	
2012	5G2	PEACH ORCHRD	YREKA	28	
2012	5G21	GAZELLE-GRDA	YREKA	28	
2012	5R151	ROOSEVELT	CRESCENT CITY	28	
2012	4L3	RED ROCK (MACDOEL)	TULELAKE	27	
2012	5G41	ETNA TIE	YREKA	27	
2012	5L83	TOWN (TULELAKE)	TULELAKE	27	
2012	5G93	SCHOOL-TOWN	MT SHASTA	26	
2012	5G35	AIR FORCE	YREKA	25	
2012	5G79	PIONEER (MT SHASTA)	MT SHASTA	24	
2012	5R171	SAWMILL	CRESCENT CITY	24	
2012	5G69	SHASTA SPR	MT SHASTA	23	
2012	5L68	NEWELL	TULELAKE	23	
2012	5G39	SEIAD CRK	YREKA	22	
2012	5G97	NORTH (SHOTGUN CREEK)	MT SHASTA	22	14
2012	5R371	AZALEA	CRESCENT CITY	22	
2012	5G99	SOUTH (SHOTGUN CREEK)	MT SHASTA	21	15
2012	5R165	SOUTH BANK	CRESCENT CITY	21	
2012	5R194	INDUSTRIAL	CRESCENT CITY	21	
2012	5G19	TOWN (HORN BROOK) (CA)	YREKA	19	
2012	5G5	MAIN STREET (GREENHORN)	YREKA	19	
2012	5L82	EAST	TULELAKE	19	
2012	5R170	NORTH (YUROK)	CRESCENT CITY	18	
2012	5R195	CITY	CRESCENT CITY	18	
2012	5G16	TOWN (HAPPY CAMP)	YREKA	17	
2012	5G63	CALLAHAN	YREKA	17	
2012	5L63	TOWN (DORRIS)	TULELAKE	17	
2012	5L64	CAL-ORE	TULELAKE	16	
2012	5R166	SMITH RIVER	CRESCENT CITY	16	
2012	6G25	LITTLE SHASTA	YREKA	15	
2012	8G103	DOG CREEK	MT SHASTA	15	
2012	5G1	GREENVIEW	YREKA	14	
2012	5G23	WHITE MT. (CA)	YREKA	14	
2012	4G1	LAKE (SHASTINA)	YREKA	13	
2012	5L78	SHEEP MTN.	TULELAKE	13	
2012	5R161	COOPER ST	CRESCENT CITY	13	

Note: A sustained outage does not necessarily mean the entire circuit was without power.

**California PUC
Annual Reliability Report for CY 2014**

Year	Circuit ID	Circuit Name	Op Area Name	Interruption Count	Interruptions at Last Step-Down Transformer Conforming to 5. Reporting
2013	5G2	PEACH ORCHRD	YREKA	51	
2013	5G77	BLACK BUTTE	MT SHASTA	45	
2013	5G83	BEL-AIR	MT SHASTA	41	
2013	5L83	TOWN (TULELAKE)	TULELAKE	41	
2013	5G23	WHITE MT. (CA)	YREKA	39	
2013	5G41	ETNA TIE	YREKA	34	
2013	5G63	CALLAHAN	YREKA	34	
2013	5R152	PINE GROVE	CRESCENT CITY	31	
2013	5L87	HYDRO	ALTURAS	30	
2013	5R167	HWY 101	CRESCENT CITY	30	
2013	5L68	NEWELL	TULELAKE	28	
2013	5G149	HIGHLAND	YREKA	27	
2013	5G19	TOWN (HORN BROOK) (CA)	YREKA	23	
2013	5L64	CAL-ORE	TULELAKE	23	
2013	5G1	GREENVIEW	YREKA	21	
2013	5G21	GAZELLE-GRDA	YREKA	21	
2013	4G1	LAKE (SHASTINA)	YREKA	20	
2013	5G16	TOWN (HAPPY CAMP)	YREKA	20	
2013	5G7	FAIRLANE	YREKA	20	
2013	5R194	INDUSTRIAL	CRESCENT CITY	20	
2013	5R171	SAWMILL	CRESCENT CITY	19	
2013	4L3	RED ROCK (MACDOEL)	TULELAKE	18	
2013	5G31	SOUTH (MONTAGUE)	YREKA	18	
2013	5G35	AIR FORCE	YREKA	18	
2013	5G5	MAIN STREET (GREENHORN)	YREKA	18	
2013	5G79	PIONEER (MT SHASTA)	MT SHASTA	18	
2013	5G93	SCHOOL-TOWN	MT SHASTA	18	
2013	5R160	CRESCENT CTR	CRESCENT CITY	18	
2013	5R370	Lilly	CRESCENT CITY	18	
2013	5L97	CEDARVILLE	ALTURAS	17	
2013	6G25	LITTLE SHASTA	YREKA	17	
2013	5G33	TOWN-AGER	YREKA	16	
2013	5R161	COOPER ST	CRESCENT CITY	16	
2013	5L78	SHEEP MTN.	TULELAKE	15	
2013	5G69	SHASTA SPR	MT SHASTA	13	
2013	5L77	SOUTH (MCDOEL)	TULELAKE	13	
2013	5L82	EAST	TULELAKE	13	
2013	5R147	LAKE EARL	CRESCENT CITY	13	
2013	5R170	NORTH (YUOK)	CRESCENT CITY	13	

**California PUC
Annual Reliability Report for CY 2014**

Year	Circuit ID	Circuit Name	Op Area Name	Interruption Count	Interruptions at Last Step-Down Transformer Conforming to 5. Reporting
2014	4G1	LAKE (SHASTINA)	YREKA	21	
2014	4L3	RED ROCK (MACDOEL)	TULELAKE	19	
2014	5G1	GREENVIEW	YREKA	13	
2014	5G149	HIGHLAND	YREKA	22	
2014	5G19	TOWN (HORN BROOK) (CA)	YREKA	17	
2014	5G2	PEACH ORCHRD	YREKA	31	
2014	5G21	GAZELLE-GRDA	YREKA	23	
2014	5G23	WHITE MT. (CA)	YREKA	16	
2014	5G33	TOWN-AGER	YREKA	13	
2014	5G39	SEIAD CRK	YREKA	13	
2014	5G40	SCOTT BAR	YREKA	16	
2014	5G41	ETNA TIE	YREKA	50	
2014	5G5	MAIN STREET (GREENHORN)	YREKA	14	
2014	5G63	CALLAHAN	YREKA	13	
2014	5G7	FAIRLANE	YREKA	14	
2014	5G77	BLACK BUTTE	MT SHASTA	36	
2014	5G79	PIONEER (MT SHASTA)	MT SHASTA	23	
2014	5G83	BEL-AIR	MT SHASTA	51	
2014	5G93	SCHOOL-TOWN	MT SHASTA	15	
2014	5L64	CAL-ORE	TULELAKE	14	
2014	5L68	NEWELL	TULELAKE	19	
2014	5L77	SOUTH (MCDOEL)	TULELAKE	13	
2014	5L78	SHEEP MTN.	TULELAKE	15	
2014	5L82	EAST	TULELAKE	17	
2014	5L83	TOWN (TULELAKE)	TULELAKE	24	
2014	5L87	HYDRO	ALTURAS	18	
2014	5R147	LAKE EARL	CRESCENT CITY	17	
2014	5R152	PINE GROVE	CRESCENT CITY	35	
2014	5R160	CRESCENT CTR	CRESCENT CITY	36	
2014	5R161	COOPER ST	CRESCENT CITY	14	
2014	5R165	SOUTH BANK	CRESCENT CITY	20	
2014	5R167	HWY 101	CRESCENT CITY	24	
2014	5R170	NORTH (YUROK)	CRESCENT CITY	20	
2014	5R171	SAWMILL	CRESCENT CITY	25	
2014	5R194	INDUSTRIAL	CRESCENT CITY	22	
2014	5R195	CITY	CRESCENT CITY	17	
2014	5R370	Lilly	CRESCENT CITY	16	

Note: A sustained outage does not necessarily mean the entire circuit was without power.

**PACIFIC POWER'S TOP TEN LARGEST OUTAGES
BY CUSTOMER MINUTES LOST**

**California PUC
Annual Reliability Report for CY 2014**

**PACIFIC POWER'S TOP TEN LARGEST OUTAGES BY CUSTOMER MINUTES LOST
2005 - 2014**

Note: Staff to Restore data is not available for individual outages. Major event filings include resource counts for the event.

Significant Outage Events - 2005

Rank	Description	Date	Number of Customers Affected	Customer Minutes Lost	Longest Customer Interruption (minutes)	Staff to Restore	Excluded Major Event?
1	Major Storm or Disaster	12/31/2005	450	1,299,059	3576		YES
2	Major Storm or Disaster	1/8/2005	348	1,128,921	3642		YES
3	Foreign Interference	10/28/2005	1497	1,033,692	900		YES
4	Major Storm or Disaster	1/8/2005	807	899,033	2394		YES
5	Major Storm or Disaster	12/31/2005	402	868,648	2208		YES
6	Major Storm or Disaster	1/8/2005	245	593,496	2424		YES
7	Major Storm or Disaster	12/30/2005	322	562,475	2562		YES
8	Major Storm or Disaster	1/8/2005	890	413,835	468		YES
9	Major Storm or Disaster	1/8/2005	807	403,002	498		YES
10	Equipment	10/30/2005	2,335	375,601	162		NO

Significant Outage Events - 2006

Rank	Description	Date	Number of Customers Affected	Customer Minutes Lost	Longest Customer Interruption (minutes)	Staff to Restore	Excluded Major Event?
1	Major Storm or Disaster	3/5/2006	449	742,305	1677		YES
2	Major Storm or Disaster	3/4/2006	1409	702,692	499		YES
3	Intentional to Clear Trouble	1/1/2006	1120	611,007	581		YES
4	Major Storm or Disaster	12/26/2006	454	596,617	1314		YES
5	Loss of Supply	8/7/2006	898	551,417	614		NO
6	Major Storm or Disaster	3/5/2006	1095	547,025	500		YES
7	Major Storm or Disaster	12/26/2006	401	516,929	1289		YES
8	Planned Customer Notice Given	10/17/2006	1026	472,644	461		NO
9	Planned Customer Notice Given	3/1/2006	441	469,224	1064		YES
10	Loss of Supply	2/26/2006	876	428,736	543		YES

Significant Outage Events - 2007

Rank	Description	Date	Number of Customers Affected	Customer Minutes Lost	Longest Customer Interruption (minutes)	Staff to Restore	Excluded Major Event?
1	Major Storm or Disaster	2/21/2007	901	1,438,657	1597		YES
2	Major Storm or Disaster	2/22/2007	902	1,161,460	1288		YES
3	Major Storm or Disaster	2/22/2007	674	676,629	1004		YES
4	Major Storm or Disaster	2/21/2007	678	633,071	934		YES
5	Major Storm or Disaster	12/3/2007	924	530,361	574		YES
6	Major Storm or Disaster	2/25/2007	834	435,974	523		YES
7	Major Storm or Disaster	12/3/2007	615	373,090	607		YES
8	Major Storm or Disaster	12/3/2007	643	347,863	541		YES
9	Major Storm or Disaster	2/22/2007	748	331,888	444		YES
10	Major Storm or Disaster	2/22/2007	708	328,854	464		YES

Significant Outage Events - 2008

Rank	Description	Date	Number of Customers Affected	Customer Minutes Lost	Longest Customer Interruption (minutes)	Staff to Restore	Excluded Major Event?	Restored < 3 Hrs	Restored >3 < 24 Hrs	Restored >24 < 48 Hrs	Restored >48 < 72 Hrs
1	Loss of Transmission Line	1/4/2008	511	1,548,177	3029.7		YES				511
2	Windstorm	1/4/2008	1,033	1,252,667	1212.66		YES		1,033		
3	Loss of Transmission Line	1/10/2008	1,037	1,126,251	1086.06		YES		1,037		
4	Loss of Transmission Line	1/5/2008	1,037	1,100,672	1061.4		YES		1,037		
5	Loss of Transmission Line	2/23/2008	1,029	946,834	920.16		NO		1,029		
6	Tree - Non-preventable	1/8/2008	1,037	936,169	902.76		YES		1,037		
7	Loss of Transmission Line	1/4/2008	1,037	895,726	863.76		YES		1,037		
8	Snow, Sleet and Blizzard	1/8/2008	2,390	834,993	769.2		YES	1,210	1,180		
9	Windstorm	1/4/2008	1,800	803,229	912.3		YES		1,800		
10	Loss of Transmission Line	1/8/2008	1,513	787,622	553.98		YES		1,513		

**California PUC
Annual Reliability Report for CY 2014**

Significant Outage Events - 2009

Rank	Description	Date	Number of Customers Affected	Customer Minutes Lost	Longest Customer Interruption (minutes)	Staff to Restore	Excluded Major Event?	Restored < 3 Hrs	Restored >3 < 24 Hrs	Restored >24 < 48 Hrs	Restored >48 < 72 Hrs
1	Loss of Transmission Line	12/24/2009	2,393	605,030	252.8		YES		2,393		
2	Unknown	3/2/2009	1,039	470,105	515.7		NO		1,039		
3	Loss of Transmission Line	12/24/2009	1,847	466,983	252.8		YES		1,847		
4	B/O Equipment	10/27/2009	2,392	422,256	254.4		NO	1,200	1,192		
5	Tree - Non-preventable	3/1/2009	459	383,888	1042.3		NO		459		
6	Tree - Non-preventable	2/15/2009	382	320,727	845.2		NO		382		
7	B/O Equipment	12/27/2009	1,070	302,232	365.5		NO	114	956		
8	Loss of Transmission Line	10/13/2009	995	280,275	281.7		NO		995		
9	Wind	10/14/2009	1,065	273,740	365.8		NO		1,065		
10	Pole Fire	2/23/2009	485	272,053	560.9		NO		485		

Significant Outage Events - 2010

Rank	Description	Date	Number of Customers Affected	Customer Minutes Lost	Longest Customer Interruption (minutes)	Staff to Restore	Excluded Major Event?	Restored < 3 Hrs	Restored >3 < 24 Hrs	Restored >24 < 48 Hrs	Restored >48 < 72 Hrs	Restored > 72 Hrs
1	Snow, Sleet and Blizzard	1/19/2010	1,347	4,234,449	5533.8		YES			206	1,073	68
2	Loss of Transmission Line	1/20/2010	1,041	4,091,276	4591.9		YES				890	151
3	Snow, Sleet and Blizzard	1/20/2010	871	3,681,730	4853.5		YES			31	286	554
4	Tree - Non-preventable	1/20/2010	2,014	3,058,895	4822.7		YES	1,250			671	93
5	Tree - Non-preventable	1/19/2010	472	2,053,386	5104.8		YES				264	208
6	Loss of Transmission Line	1/19/2010	1,041	1,375,369	1321.2		YES		1,041			
7	Loss of Transmission Line	1/20/2010	1,400	1,189,230	849.5		YES		1,400			
8	Snow, Sleet and Blizzard	1/19/2010	2,118	1,040,447	5091.0		YES		2,014		68	36
9	Loss of Transmission Line	1/24/2010	1,041	1,012,477	972.6		YES		1,041			
10	Loss of Transmission Line	1/25/2010	1,041	911,779	1446.2		YES		748	293		

Significant Outage Events - 2011

Rank	Description	Date	Number of Customers Affected	Customer Minutes Lost	Longest Customer Interruption (minutes)	Staff to Restore	Excluded Major Event?	Restored < 3 Hrs	Restored >3 < 24 Hrs	Restored >24 < 48 Hrs	Restored >48 < 72 Hrs	Restored > 72 Hrs
1	Loss of Transmission Line	3/24/2011	1,042	550,141	528.0		NO		1,042			
2	Loss of Transmission Line	12/10/2011	546	430,949	789.3		NO		546			
3	Loss of Transmission Line	2/17/2011	1,043	383,111	367.3		NO		1,043			
4	Snow, Sleet and Blizzard	3/18/2011	2,335	354,489	421.5		NO	1,303	1,032			
5	Loss of Transmission Line	10/10/2011	1,437	343,347	238.9		NO		1,437			
6	Loss of Transmission Line	10/10/2011	1,203	287,437	238.9		NO		1,203			
7	Landslide	4/2/2011	86	226,167	2629.9		NO			86		
8	Equipment Failure	5/3/2011	679	222,033	327.0		NO		679			
9	Loss of Transmission Line	7/31/2011	2,404	219,766	91.4		NO	2,404				
10	Emergency Damage Repair	9/15/2011	1,437	205,826	143.2		NO	1,437				

Significant Outage Events - 2012

Rank	Description	Date	Number of Customers Affected	Customer Minutes Lost	Longest Customer Interruption (minutes)	Staff to Restore	Excluded Major Event?	Restored < 3 Hrs	Restored >3 < 24 Hrs	Restored >24 < 48 Hrs	Restored >48 < 72 Hrs	Restored > 72 Hrs
1	Snow, Sleet and Blizzard	12/20/2012	138	963,560	6,982.3		YES	0	0	0	0	138
2	Loss of Transmission Line	12/23/2012	373	697,305	1,869.5		YES	0	0	373	0	0
3	Intentional to Clear Trouble	12/22/2012	508	681,990	1,342.5		YES	0	508	0	0	0
4	Snow, Sleet and Blizzard	12/20/2012	124	389,703	3,142.8		YES	0	0	0	124	0
5	Loss of Transmission Line	9/30/2012	1,443	378,331	262.2		YES	0	1,443	0	0	0
6	Tree - Non-Preventable	12/24/2012	165	371,066	2,248.9		YES	0	0	165	0	0
7	Loss of Transmission Line	3/31/2012	438	367,380	838.8		NO	0	438	0	0	0
8	Snow, Sleet and Blizzard	12/21/2012	167	364,361	2,181.8		YES	0	0	167	0	0
9	Loss of Transmission Line	3/31/2012	1,064	337,448	317.2		NO	0	1,064	0	0	0
10	Tree - Non-Preventable	11/29/2012	544	333,817	613.6		NO	0	544	0	0	0

**California PUC
Annual Reliability Report for CY 2014**

Significant Outage Events - 2013

Rank	Description	Date	Number of Customers Affected	Customer Minutes Lost	Longest Customer Interruption (minutes)	Staff to Restore	Excluded Major Event?	Restored < 3 Hrs	Restored >3 < 24 Hrs	Restored >24 < 48 Hrs	Restored >48 < 72 Hrs	Restored > 72 Hrs
1	Loss of Substation	9/5/2013	1,451	731,594	504.2		NO	0	1,451	0	0	0
2	Loss of Transmission Line	8/25/2013	2,414	513,538	212.7		YES	0	2,414	0	0	0
3	Loss of Transmission Line	8/27/2013	1,452	466,576	321.3		NO	0	1,452	0	0	0
4	Loss of Transmission Line	8/25/2013	1,858	395,259	212.7		YES	0	1,858	0	0	0
5	Loss of Transmission Line	8/25/2013	1,450	308,463	212.7		YES	0	1,450	0	0	0
6	Tree - Non-Preventable	9/30/2013	458	299,295	653.5		NO	0	458	0	0	0
7	Loss of Substation	5/20/2013	1,042	297,838	285.8		NO	0	1,042	0	0	0
8	Loss of Substation	12/9/2013	1,663	297,317	178.8		NO	1,663	0	0	0	0
9	Loss of Transmission Line	8/25/2013	2,028	294,026	145.0		YES	2,028	0	0	0	0
10	Loss of Transmission Line	5/11/2013	1,444	274,938	190.4		NO	0	1,444	0	0	0

Significant Outage Events - 2014

Rank	Description	Date	Number of Customers Affected	Customer Minutes Lost	Longest Customer Interruption (minutes)	Staff to Restore	Excluded Major Event?	Restored < 3 Hrs	Restored >3 < 24 Hrs	Restored >24 < 48 Hrs	Restored >48 < 72 Hrs	Restored > 72 Hrs
1	Loss of Transmission Line	10/25/2014	1,533	1,084,725	708		YES	0	1,533	0	0	0
2	Loss of Transmission Line	9/15/2014	1,206	646,878	536		YES	0	1,206	0	0	0
3	Loss of Transmission Line	10/25/2014	1,472	571,455	388		YES	0	1,472	0	0	0
4	Loss of Transmission Line	10/25/2014	453	517,764	1,143		YES	0	453	0	0	0
5	Loss of Transmission Line	10/25/2014	1,281	497,306	388		YES	0	1,281	0	0	0
6	Loss of Transmission Line	9/15/2014	676	491,215	727		YES	0	676	0	0	0
7	Loss of Transmission Line	10/25/2014	1,176	478,808	407		YES	0	1,176	0	0	0
8	Loss of Transmission Line	10/25/2014	1,068	396,086	371		YES	0	1,068	0	0	0
9	Loss of Transmission Line	10/25/2014	1,079	377,884	350		YES	0	1,079	0	0	0
10	Tree - Non-Preventable	12/21/2014	499	372,828	747		NO	0	499	0	0	0