

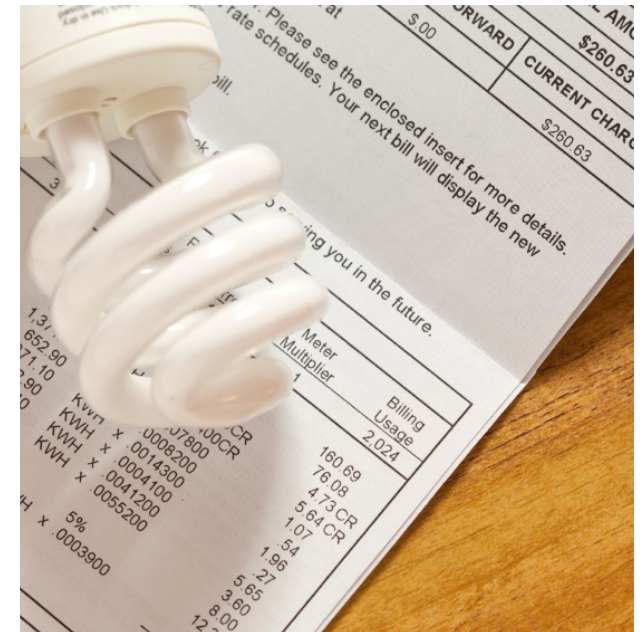


Experiences and Barriers in Achieving Integrated Demand Side Management

CPUC Workshop, January 22, 2014



Honig Winery, Rutherford



About MCE

- Not-for-profit Public Agency
- Mission Driven – Emphasis on Carbon Reductions
- Governed by Board of Directors
- Serving customers since 2010
- 125,000 (77%) customers in Marin & Richmond
- 2015 Expansion: Unincorporated Napa County, City of San Pablo, City of Benicia, City of El Cerrito
- Partner with PG&E to Provide Power to Customers

Demand Side Management Activities

- Energy Efficiency Programs
 - \$5,235,472 in energy efficiency funds for 2013-2015
 - Energy efficiency leverages water and CSI programs
- Demand Response Pilots
- On-Bill Repayment for Solar PV
- Best-in-State Net-Energy Metering
- Electric Vehicle Charging Stations

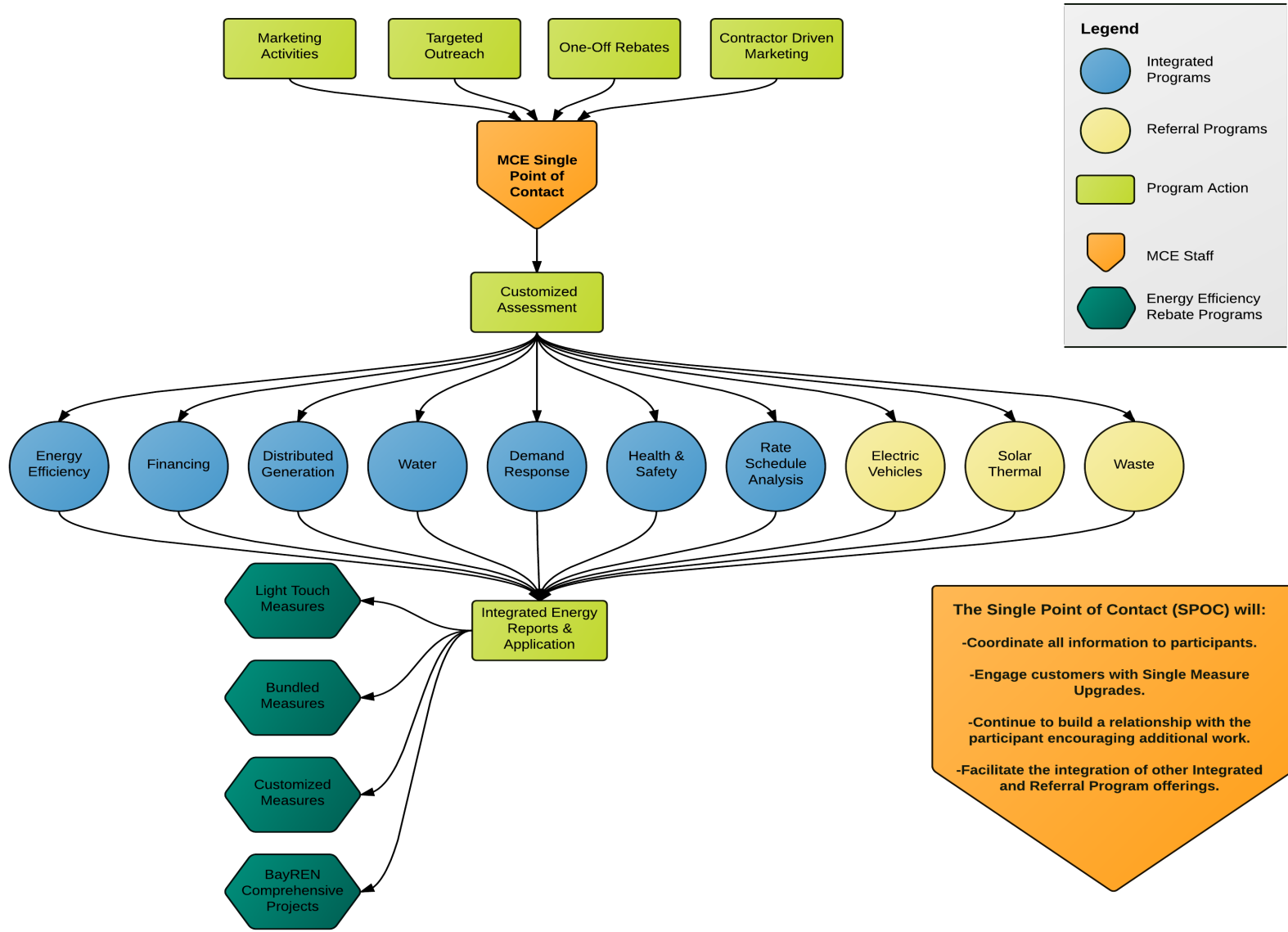
MCE Integrated Demand Side Activities

- HAN Pilot in Conjunction with Bidgley
 - Objectives: Provide 50 residential customers with insight into their electric usage through free Home Area Network Devices paired with Bidgley's unique disaggregation web tool
 - Accomplishments: The pilot helped Bidgley and PG&E develop a more streamlined registration/connection process for the subsequent program they launched together

MCE Integrated Demand Side Activities

- Tesla Storage Pilot
 - Objectives: Provide demand charge savings to large commercial customers and integrate demand response
 - Budget: No upfront cost to customers, savings are split between Tesla and customers and placed on bill
 - Accomplishments: One large commercial customer has applied for SGIP funds and should have two batteries (totaling 1.6 MW) installed by Q2 2015
- On-Bill Repayment for Solar Photovoltaic

Proposed 2016 Energy Efficiency Program



Barriers to IDSM Programs

- Tracking and Obtaining Funding from Separate Proceedings
- Different Metrics, Funding Cycle, and Regulations for Each Silo
- Challenges Integrating with PG&E's systems:
 - Billing
 - Access to Data
 - Set up of HAN devices

Thank you! Questions?



mceCleanEnergy.org | 1 (888) 632-3674