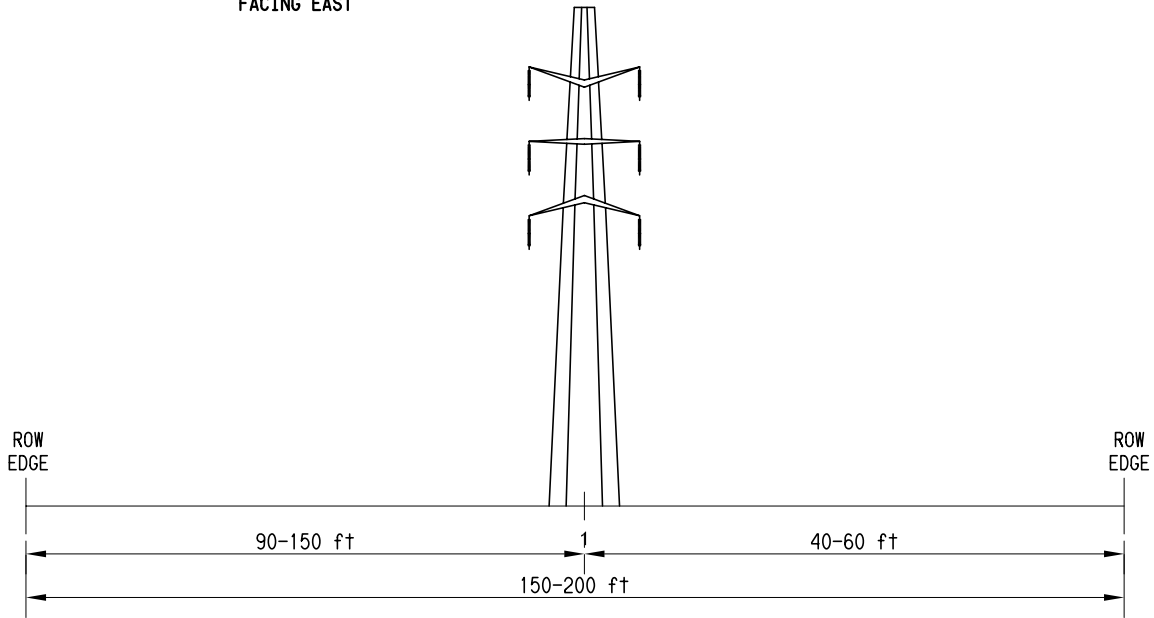


EXISTING ROW
FACING EAST

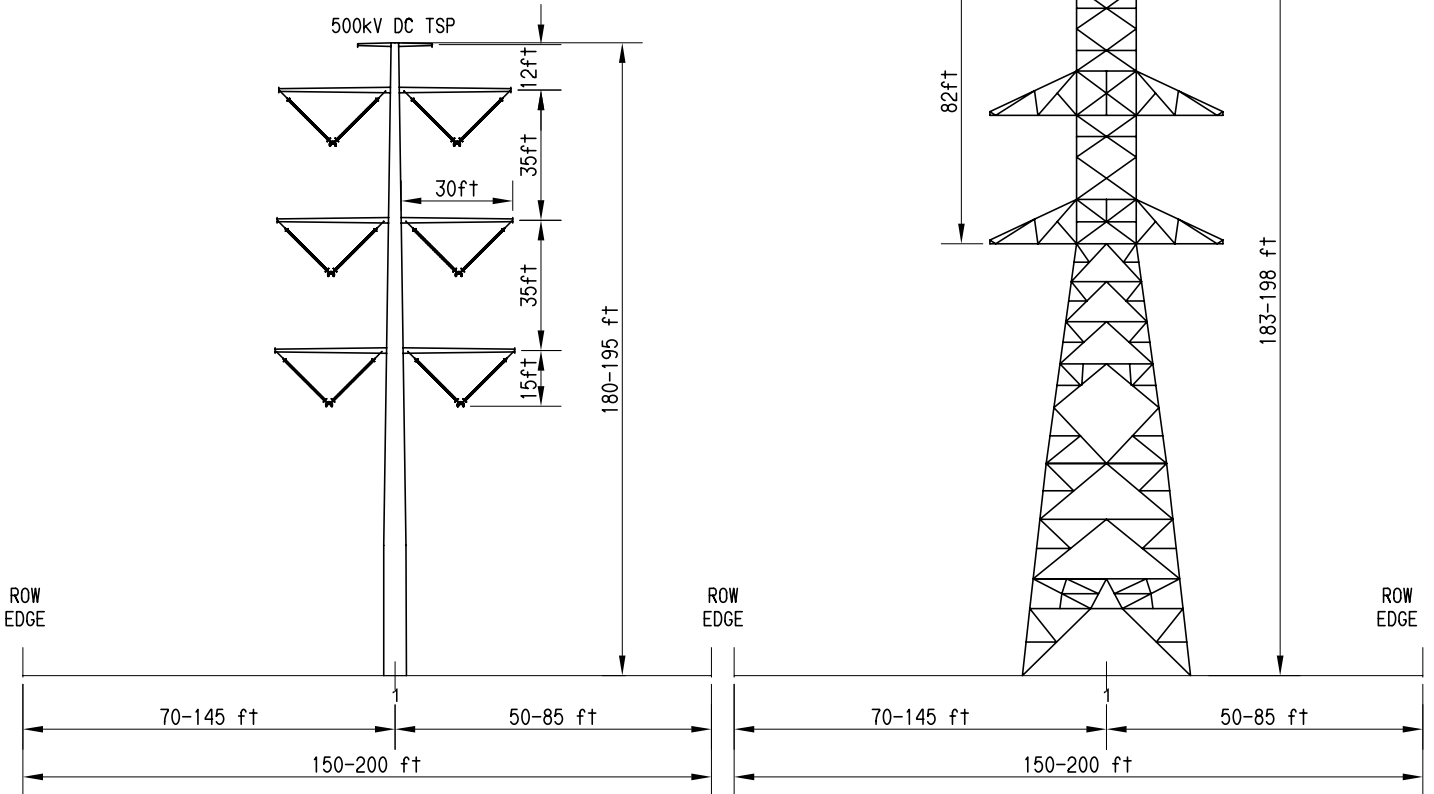
CONTEMPORARY 220kV
DC STRUCTURE



FUTURE ROW
FACING EAST

FOR DEAD END STRS: M68-T1, M70-T4, M71-T5, M72-T3
500kV DHA TOWER
30.5 ft

FOR TANGENT STRS: M67-T5, M68-T2 TO M70-T3,
M70-T5 TO M71-T4, M71-T6 TO M72-T2



Source: SCE, 2007d.



NOTE:
This drawing represents potential changes
between existing and future ROW cross sections.

Figure 2.2-47
Segment 8 ROW Cross-Section
(S8A MP 29.2 to S8A MP 34.0)