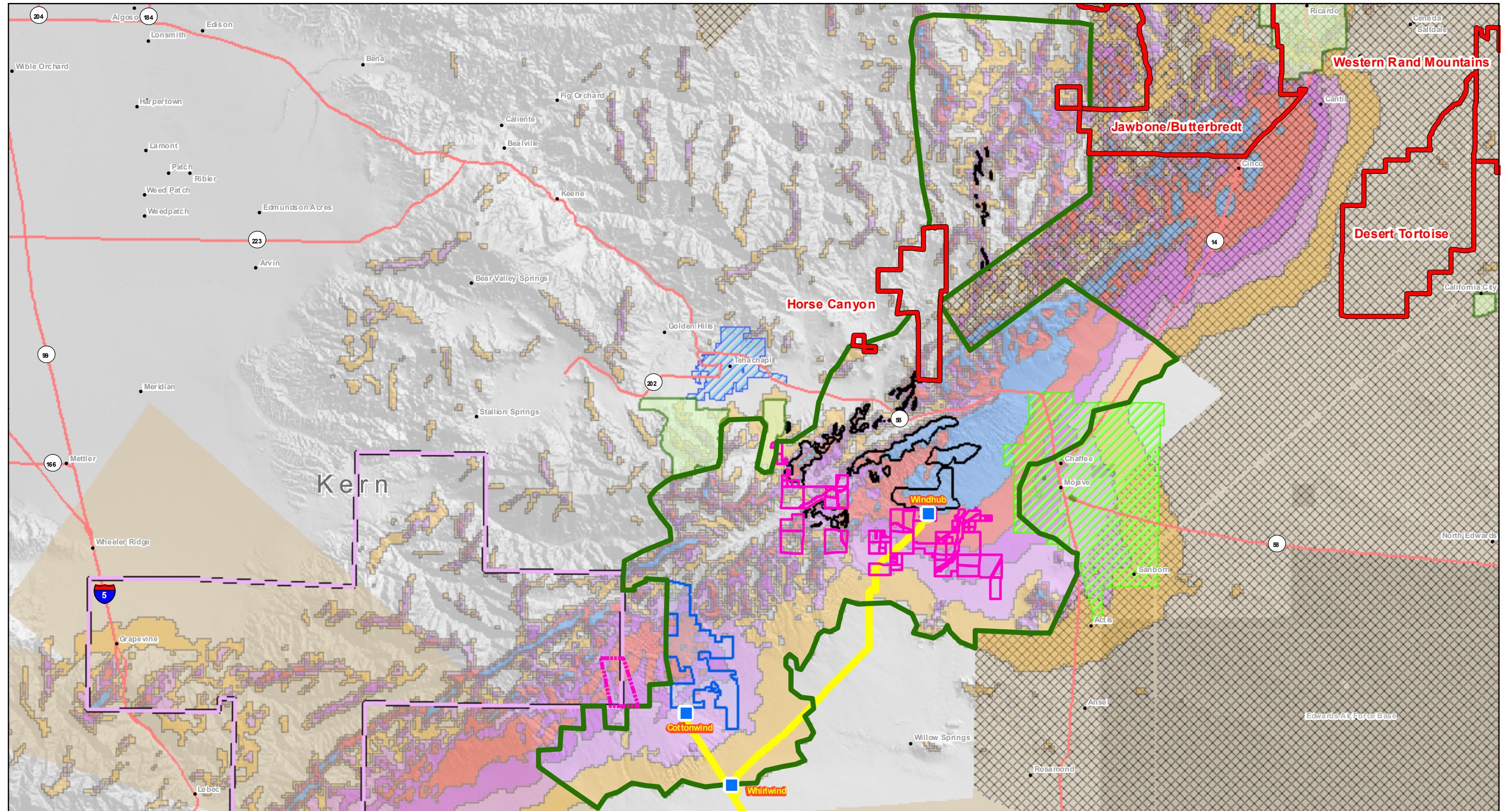


6. DEVELOPMENT OF THE TEHACHAPI WIND RESOURCE AREA
Tehachapi Renewable Transmission Project



	TWRA Study Area	Substation	Wind Power Watts/m² at 50 meters 300.001 - 400 400.001 - 500 500.001 - 600 600.001 - 800 800.001 - 100,200	Military Review Over 200 feet Wind/Comm Sites over 80 ft All others 100 ft BLM Areas of Critical Env. Concern
	Alta-Oak Creek Mojave Project Existing Wind Farms PdV Wind Energy Project Parks	TRTP Proposed Route Northrop Grumman Tejon Test Facility CA Condor Critical Habitat Town of Mojave City of Tehachapi		

Figure 6.2-2
TWRA Study Area