

**Draft**  
**Environmental Impact Report/Statement**  
Southern California Edison's Application for the

**Map & Figure Series Volume**

Application No. A.07-06-031  
SCH No. 2007081156

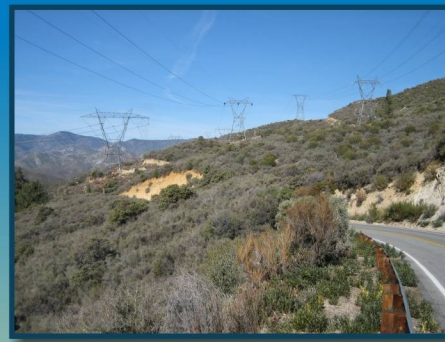
**Tehachapi Renewable  
Transmission Project**



Tehachapi Wind Turbines



Segment 4 in NW Antelope Valley



Segment 6 in Angeles National Forest



Gould Substation



Segment 8 in Rowland Heights



Chino Hills State Park



Segment 8 in Chino



Mira Loma Substation

Lead Agencies:

California Public  
Utilities Commission



USDA  
Forest Service



- 1. Detailed Proposed Project Location Strip Maps**
- 2. Vegetation Maps**
- 3. Sensitive Species Locations and Stream Crossings**
- 4. Land Use Maps**
- 5. Visual Simulations**
- 6. Project Segment Detail Maps**

Prepared by:

**Aspen**  
Environmental Group

February 2009