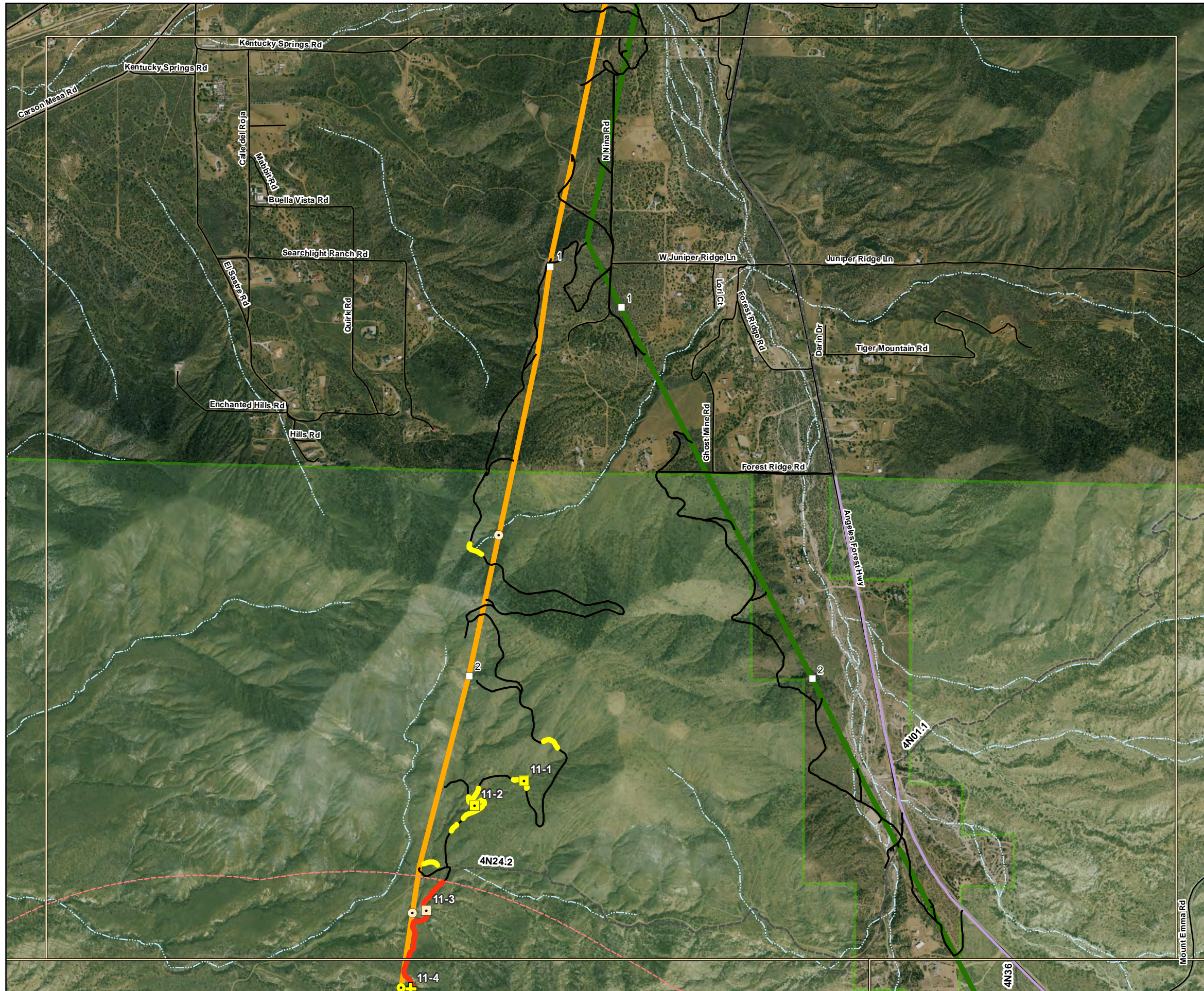
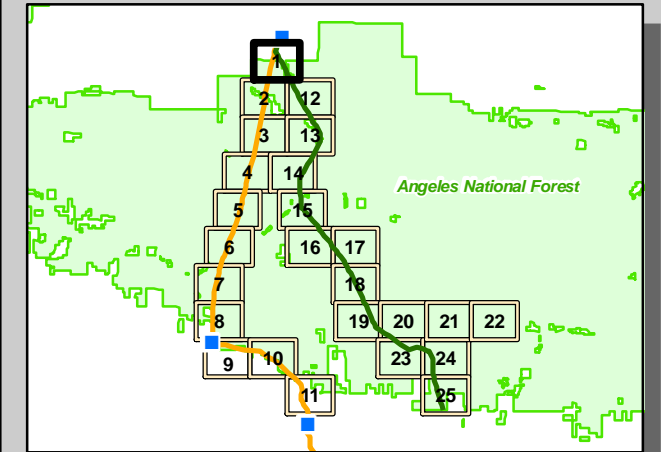
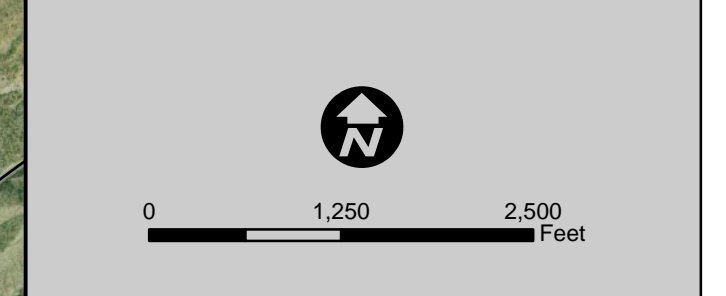


RCAs Affected by Alignments 6 & 11 on the Angeles National Forest

Sheet 1



- | | |
|--|---|
| <p>RCA Road Crossings</p> <ul style="list-style-type: none"> Ephemeral - Alternative 2 only Intermittent - Alternative 2 only Perennial - Alternative 2 only Ephemeral - Alternative 2 & 6 Intermittent - Alternative 2 & 6 Perennial - Alternative 2 & 6 <p>RCA Line Crossings</p> <ul style="list-style-type: none"> Ephemeral Intermittent Perennial <p>Roads on ANF</p> <ul style="list-style-type: none"> Paved Roads - to be used Unpaved Roads - upgrade required Forest Service Roads - not part of project | <p>Proposed Routes</p> <ul style="list-style-type: none"> Segment 6 Segment 11 Substation Segment Milepost Marker <p>Roads Within RCA Buffers</p> <ul style="list-style-type: none"> 1 Mile - Arroyo Toad 100 Meter - Perennial Streams 30 Meter - Int./Eph. Streams 1 Mile Arroyo Toad Buffer <p>ANF Boundary</p> <ul style="list-style-type: none"> Forest Ownership Lands <p>NHD Streams</p> <ul style="list-style-type: none"> Stream/River: Intermittent Stream/River: Perennial |
|--|---|



Note:
RCAs are present only on
National Forest System land.