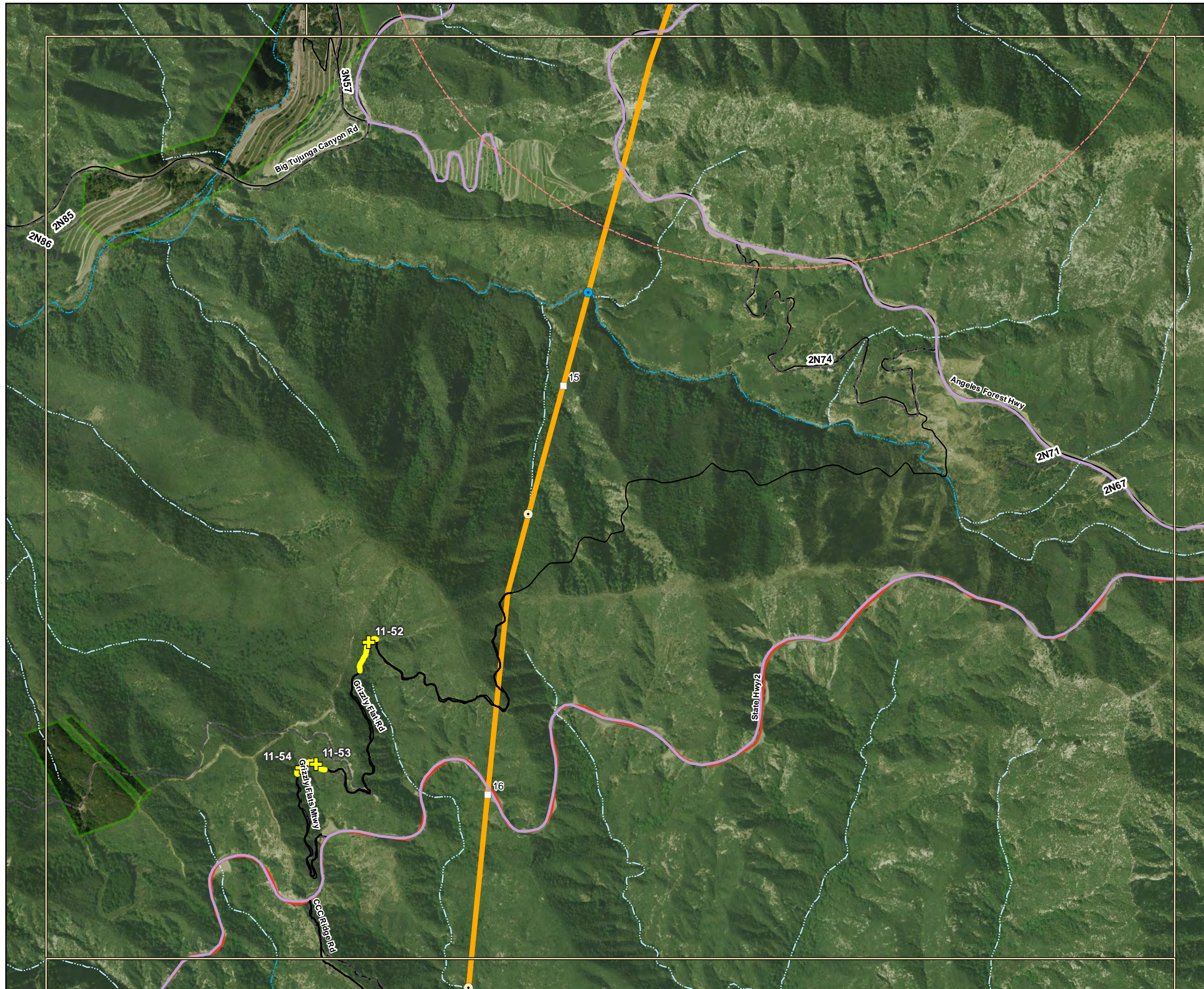
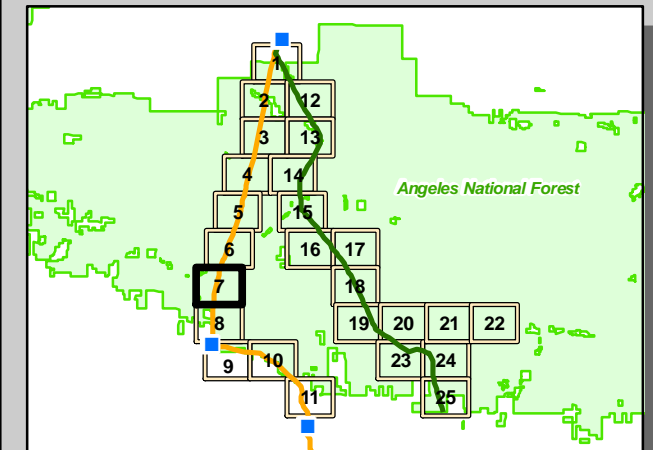


RCAs Affected by Alignments 6 & 11 on the Angeles National Forest

Sheet 7



- | | |
|---|--|
| RCA Road Crossings | Proposed Routes |
| <ul style="list-style-type: none"> ■ Ephemeral - Alternative 2 only ■ Intermittent - Alternative 2 only ■ Perennial - Alternative 2 only ⊕ Ephemeral - Alternative 2 & 6 ⊕ Intermittent - Alternative 2 & 6 ⊕ Perennial - Alternative 2 & 6 | <ul style="list-style-type: none"> — Segment 6 — Segment 11 ■ Substation □ Segment Milepost Marker |
| RCA Line Crossings | Roads Within RCA Buffers |
| <ul style="list-style-type: none"> ● Ephemeral ● Intermittent ● Perennial | <ul style="list-style-type: none"> — 1 Mile - Arroyo Toad — 100 Meter - Perennial Streams — 30 Meter - Int./Eph. Streams — 1 Mile Arroyo Toad Buffer |
| Roads on ANF | ANF Boundary |
| <ul style="list-style-type: none"> — Paved Roads - to be used — Unpaved Roads - upgrade required — Forest Service Roads - not part of project | <ul style="list-style-type: none"> ■ Forest Ownership Lands |
| | NHD Streams |
| | <ul style="list-style-type: none"> — Stream/River: Intermittent — Stream/River: Perennial |



Note:
 RCAs are present only on
 National Forest System land.

