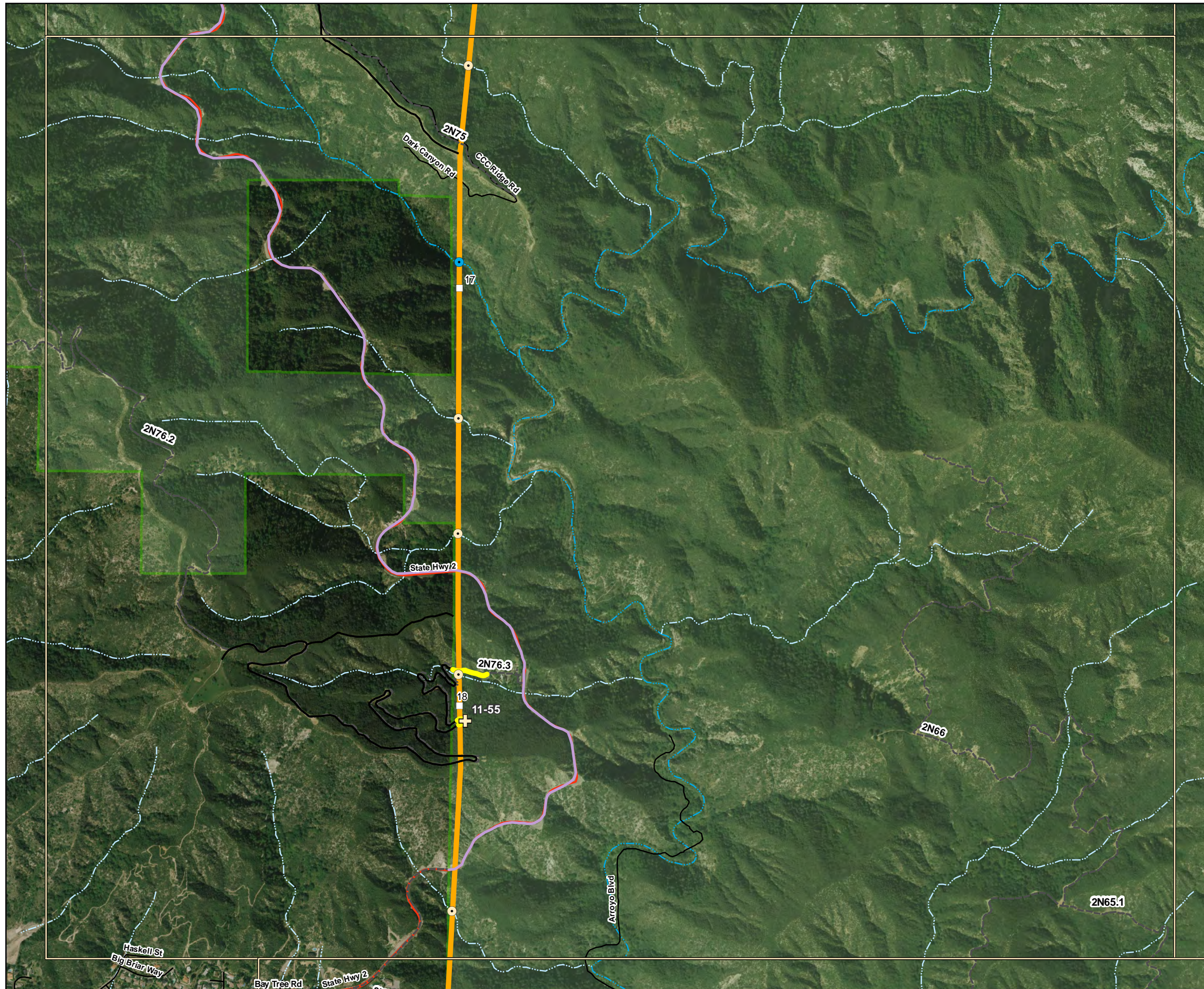
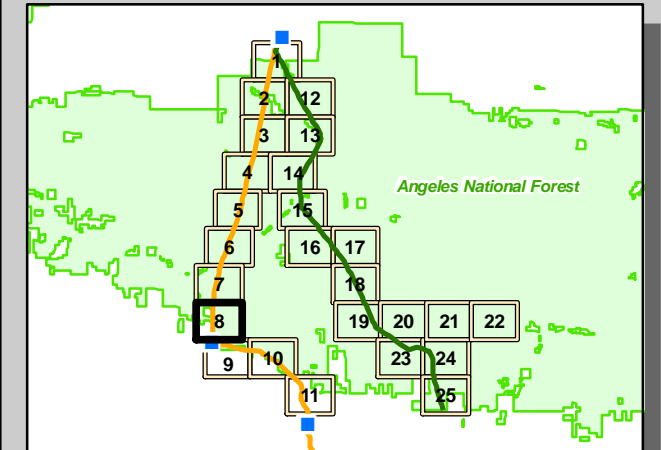


# RCAs Affected by Alignments 6 & 11 on the Angeles National Forest

Sheet 8



- |  |  |
|--|--|
| <p><b>RCA Road Crossings</b></p> <ul style="list-style-type: none"> <li>■ Ephemeral - Alternative 2 only</li> <li>■ Intermittent - Alternative 2 only</li> <li>■ Perennial - Alternative 2 only</li> <li>⊕ Ephemeral - Alternative 2 &amp; 6</li> <li>⊕ Intermittent - Alternative 2 &amp; 6</li> <li>⊕ Perennial - Alternative 2 &amp; 6</li> </ul> <p><b>RCA Line Crossings</b></p> <ul style="list-style-type: none"> <li>● Ephemeral</li> <li>● Intermittent</li> <li>● Perennial</li> </ul> <p><b>Roads on ANF</b></p> <ul style="list-style-type: none"> <li>— Paved Roads - to be used</li> <li>— Unpaved Roads - upgrade required</li> <li>— Forest Service Roads - not part of project</li> </ul> | <p><b>Proposed Routes</b></p> <ul style="list-style-type: none"> <li>— Segment 6</li> <li>— Segment 11</li> <li>■ Substation</li> <li>□ Segment Milepost Marker</li> </ul> <p><b>Roads Within RCA Buffers</b></p> <ul style="list-style-type: none"> <li>— 1 Mile - Arroyo Toad</li> <li>— 100 Meter - Perennial Streams</li> <li>— 30 Meter - Int./Eph. Streams</li> <li>— 1 Mile Arroyo Toad Buffer</li> </ul> <p><b>ANF Boundary</b></p> <ul style="list-style-type: none"> <li>— Forest Ownership Lands</li> </ul> <p><b>NHD Streams</b></p> <ul style="list-style-type: none"> <li>— Stream/River: Intermittent</li> <li>— Stream/River: Perennial</li> </ul> |
|--|--|



Note:  
RCAs are present only on  
National Forest System land.

