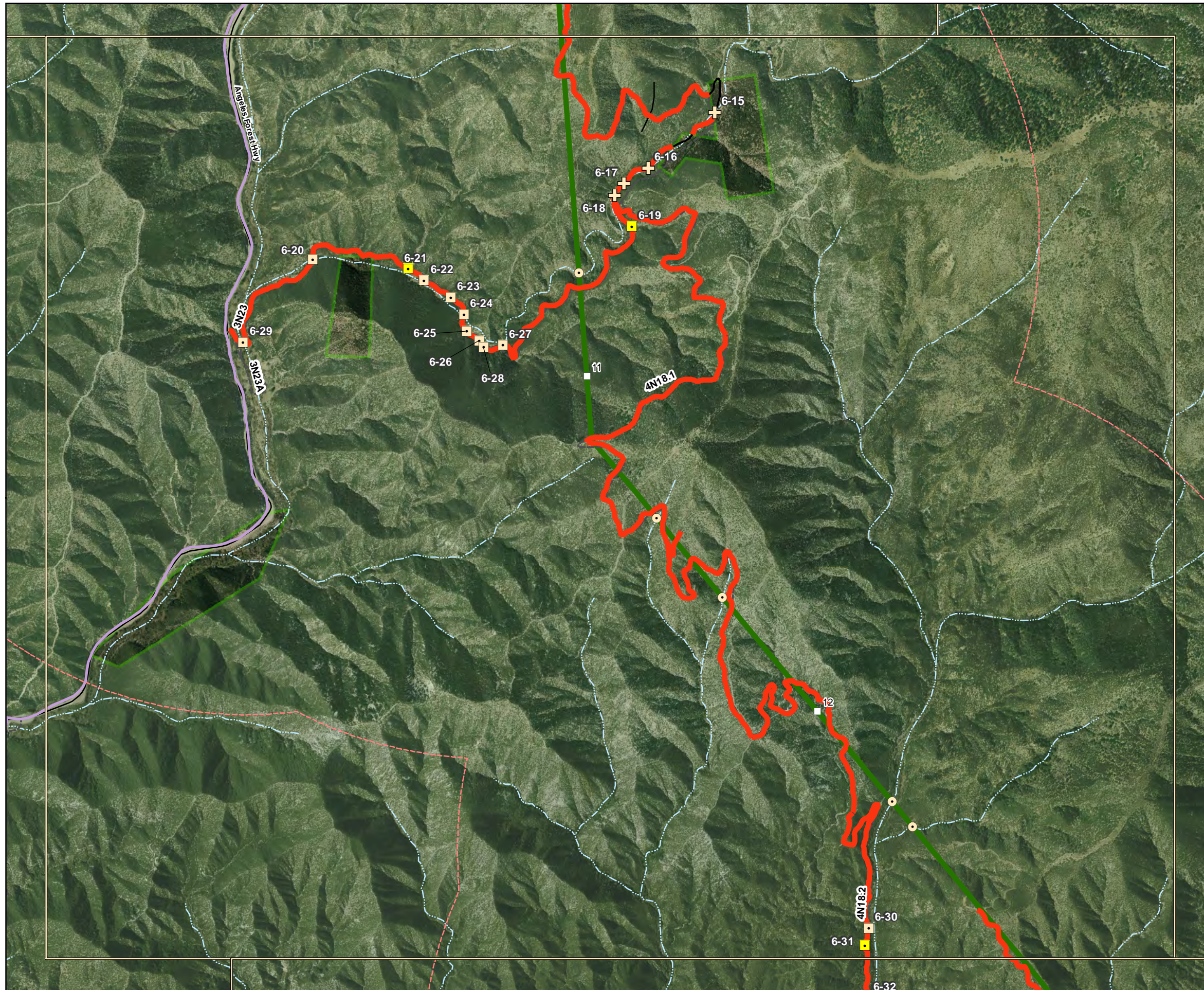
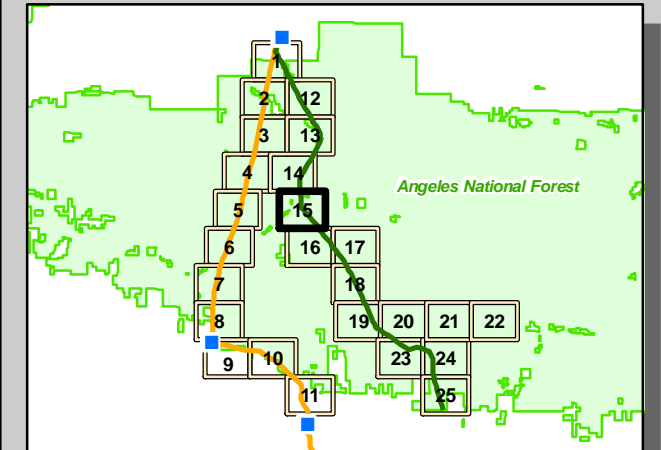
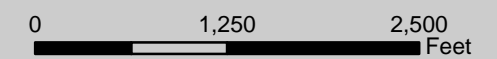


# RCAs Affected by Alignments 6 & 11 on the Angeles National Forest

Sheet 15



- |   |  |
|---|--|
| <b>RCA Road Crossings</b>   | <b>Proposed Routes</b>   |
| <ul style="list-style-type: none"> <li>■ Ephemeral - Alternative 2 only</li> <li>■ Intermittent - Alternative 2 only</li> <li>■ Perennial - Alternative 2 only</li> <li>⊕ Ephemeral - Alternative 2 &amp; 6</li> <li>⊕ Intermittent - Alternative 2 &amp; 6</li> <li>⊕ Perennial - Alternative 2 &amp; 6</li> </ul> | <ul style="list-style-type: none"> <li>— Segment 6</li> <li>— Segment 11</li> <li>■ Substation</li> <li>□ Segment Milepost Marker</li> </ul>   |
| <b>RCA Line Crossings</b>   | <b>Roads Within RCA Buffers</b>  |
| <ul style="list-style-type: none"> <li>● Ephemeral</li> <li>● Intermittent</li> <li>● Perennial</li> </ul>  | <ul style="list-style-type: none"> <li>— 1 Mile - Arroyo Toad</li> <li>— 100 Meter - Perennial Streams</li> <li>— 30 Meter - Int./Eph. Streams</li> <li>— 1 Mile Arroyo Toad Buffer</li> </ul> |
| <b>Roads on ANF</b>   | <b>ANF Boundary</b>  |
| <ul style="list-style-type: none"> <li>— Paved Roads - to be used</li> <li>— Unpaved Roads - upgrade required</li> <li>— Forest Service Roads - not part of project</li> </ul>  | <ul style="list-style-type: none"> <li>— Forest Ownership Lands</li> </ul>   |
|   | <b>NHD Streams</b>   |
|   | <ul style="list-style-type: none"> <li>— Stream/River: Intermittent</li> <li>— Stream/River: Perennial</li> </ul>  |



Note:  
 RCAs are present only on  
 National Forest System land.

