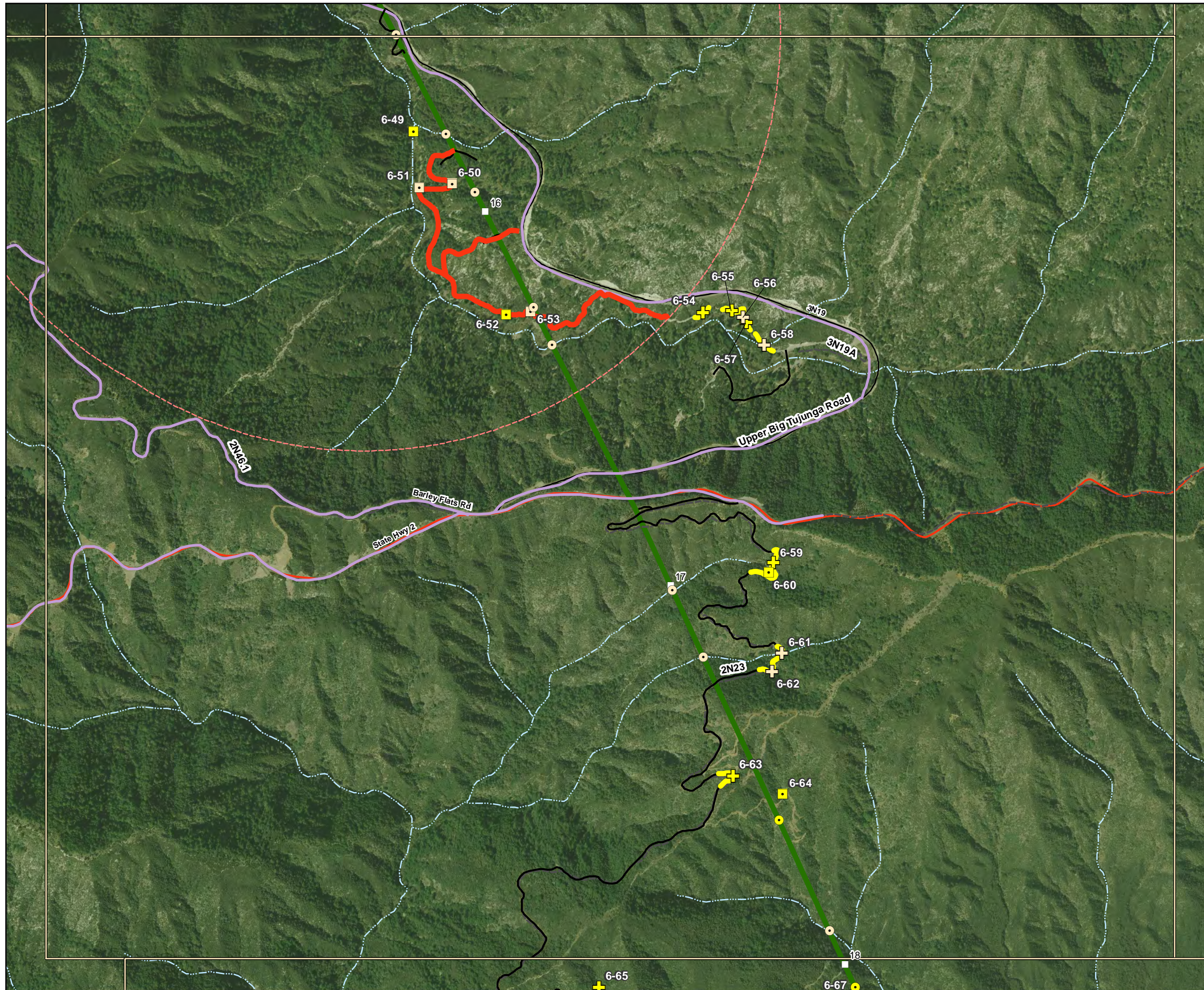
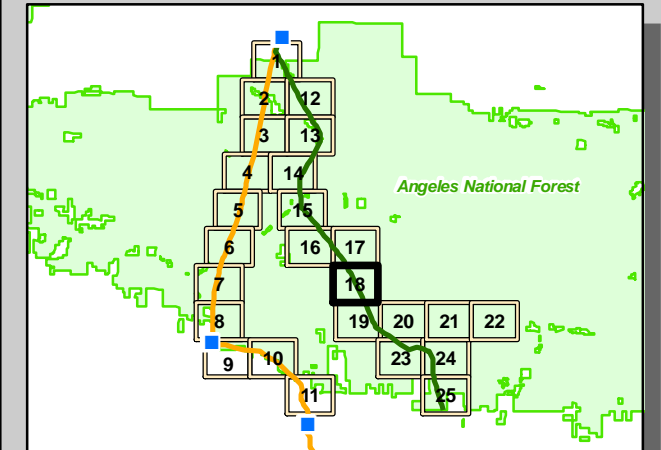
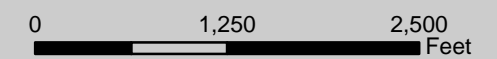


# RCAs Affected by Alignments 6 & 11 on the Angeles National Forest

Sheet 18



- |   |  |
|---|--|
| <b>RCA Road Crossings</b>   | <b>Proposed Routes</b>   |
| <ul style="list-style-type: none"> <li><span style="color: yellow;">■</span> Ephemeral - Alternative 2 only</li> <li><span style="color: white;">■</span> Intermittent - Alternative 2 only</li> <li><span style="color: blue;">■</span> Perennial - Alternative 2 only</li> <li><span style="color: yellow;">+</span> Ephemeral - Alternative 2 &amp; 6</li> <li><span style="color: white;">+</span> Intermittent - Alternative 2 &amp; 6</li> <li><span style="color: blue;">+</span> Perennial - Alternative 2 &amp; 6</li> </ul> | <ul style="list-style-type: none"> <li><span style="color: green;">—</span> Segment 6</li> <li><span style="color: orange;">—</span> Segment 11</li> <li><span style="color: blue;">■</span> Substation</li> <li><span style="color: white;">■</span> Segment Milepost Marker</li> </ul>   |
| <b>RCA Line Crossings</b>   | <b>Roads Within RCA Buffers</b>  |
| <ul style="list-style-type: none"> <li><span style="color: yellow;">○</span> Ephemeral</li> <li><span style="color: white;">○</span> Intermittent</li> <li><span style="color: blue;">○</span> Perennial</li> </ul>   | <ul style="list-style-type: none"> <li><span style="color: red;">—</span> 1 Mile - Arroyo Toad</li> <li><span style="color: blue;">—</span> 100 Meter - Perennial Streams</li> <li><span style="color: yellow;">—</span> 30 Meter - Int./Eph. Streams</li> <li><span style="color: red;">○</span> 1 Mile Arroyo Toad Buffer</li> </ul> |
| <b>Roads on ANF</b>   | <b>ANF Boundary</b>  |
| <ul style="list-style-type: none"> <li><span style="color: purple;">—</span> Paved Roads - to be used</li> <li><span style="color: black;">—</span> Unpaved Roads - upgrade required</li> <li><span style="color: dashed black;">—</span> Forest Service Roads - not part of project</li> </ul>   | <ul style="list-style-type: none"> <li><span style="color: green;">—</span> Forest Ownership Lands</li> </ul>  |
|   | <b>NHD Streams</b>   |
|   | <ul style="list-style-type: none"> <li><span style="color: blue;">—</span> Stream/River: Intermittent</li> <li><span style="color: blue;">—</span> Stream/River: Perennial</li> </ul>  |



Note:  
 RCAs are present only on  
 National Forest System land.

