



# Broadband and Adoption in Los Angeles County



**California Public Utilities Commission**  
**Connie Chen**  
**Communications Division**  
**March 30, 2018**





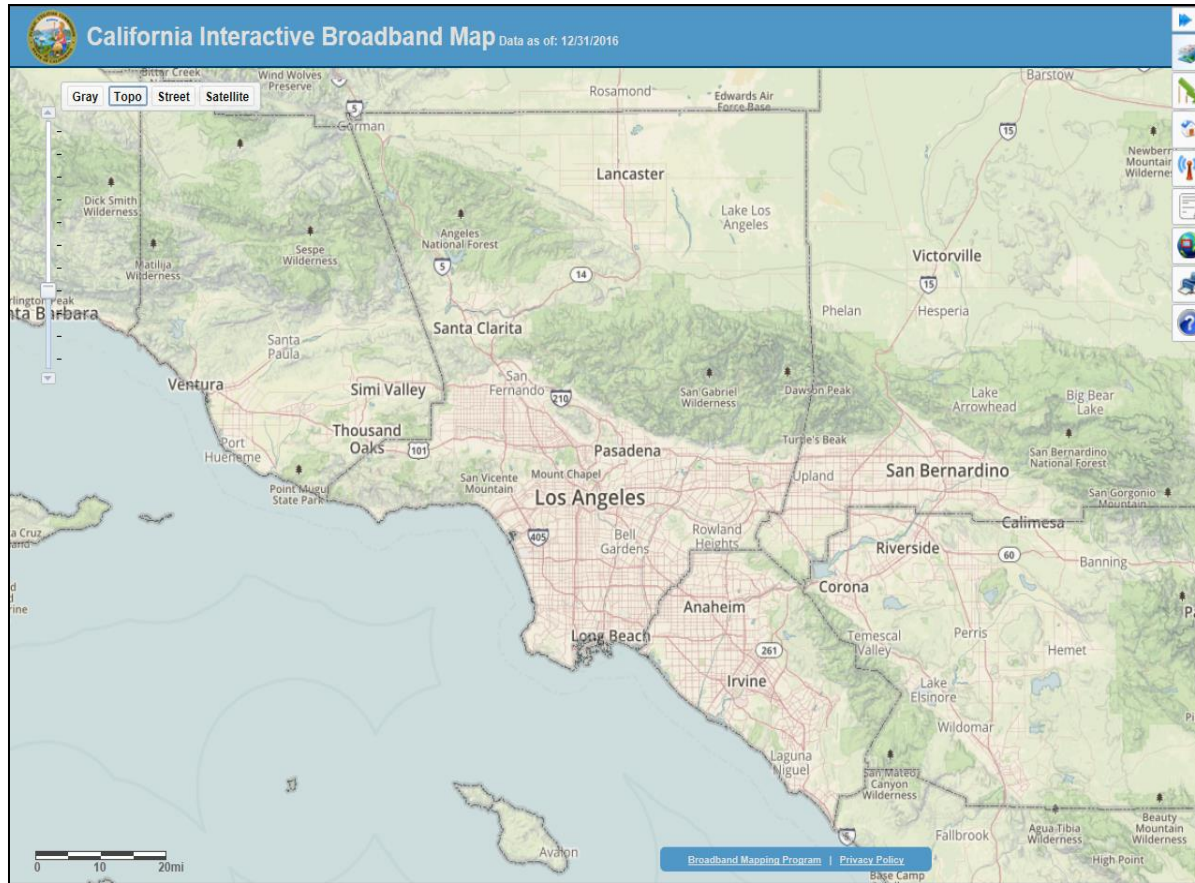
# AB 1665 Key Goals

- 98% households in each Consortia region have access to broadband at speeds of 6/1
- CASF funds do not overbuild FCC Connect America Fund (CAF) support
- Broadband Adoption Account








# Interactive Broadband Map





# Broadband Feedback

1. CalSPEED.org for Windows and macOS
2. CalSPEED mobile app  
3. Interactive Broadband Map
  - Street Address Lookup 
4. Send a hardcopy form in the mail
5. Email the FCC [broadbandfail@fcc.gov](mailto:broadbandfail@fcc.gov)





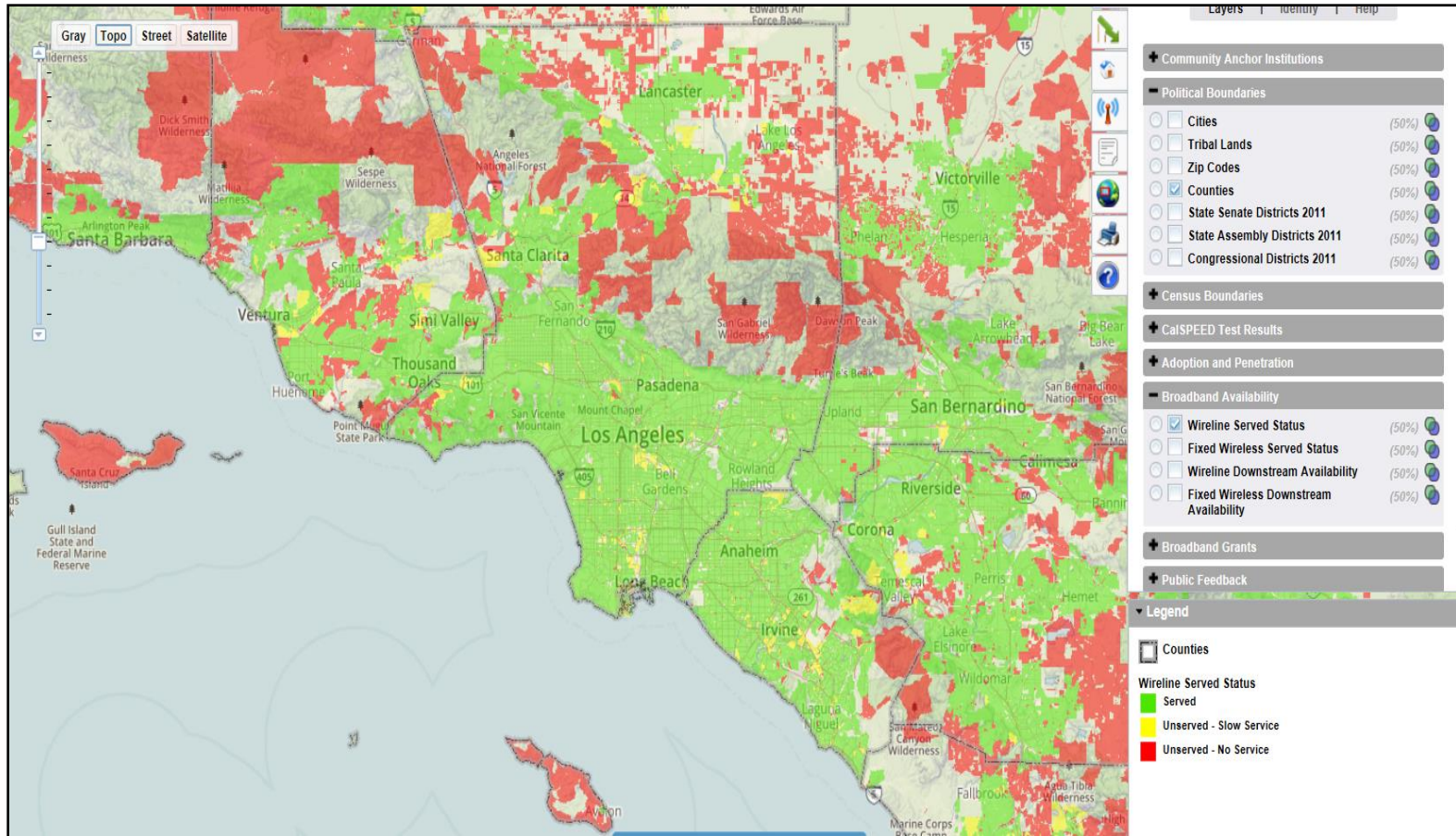
# Served Status

- Served is 6/1 or faster (Mbps)
- Unserved – Slow Service
  - Slower than 6/1
  - Faster than 768/200 Kbps
- Unserved – No Service
  - Slower than 768/200,
  - dial-up only



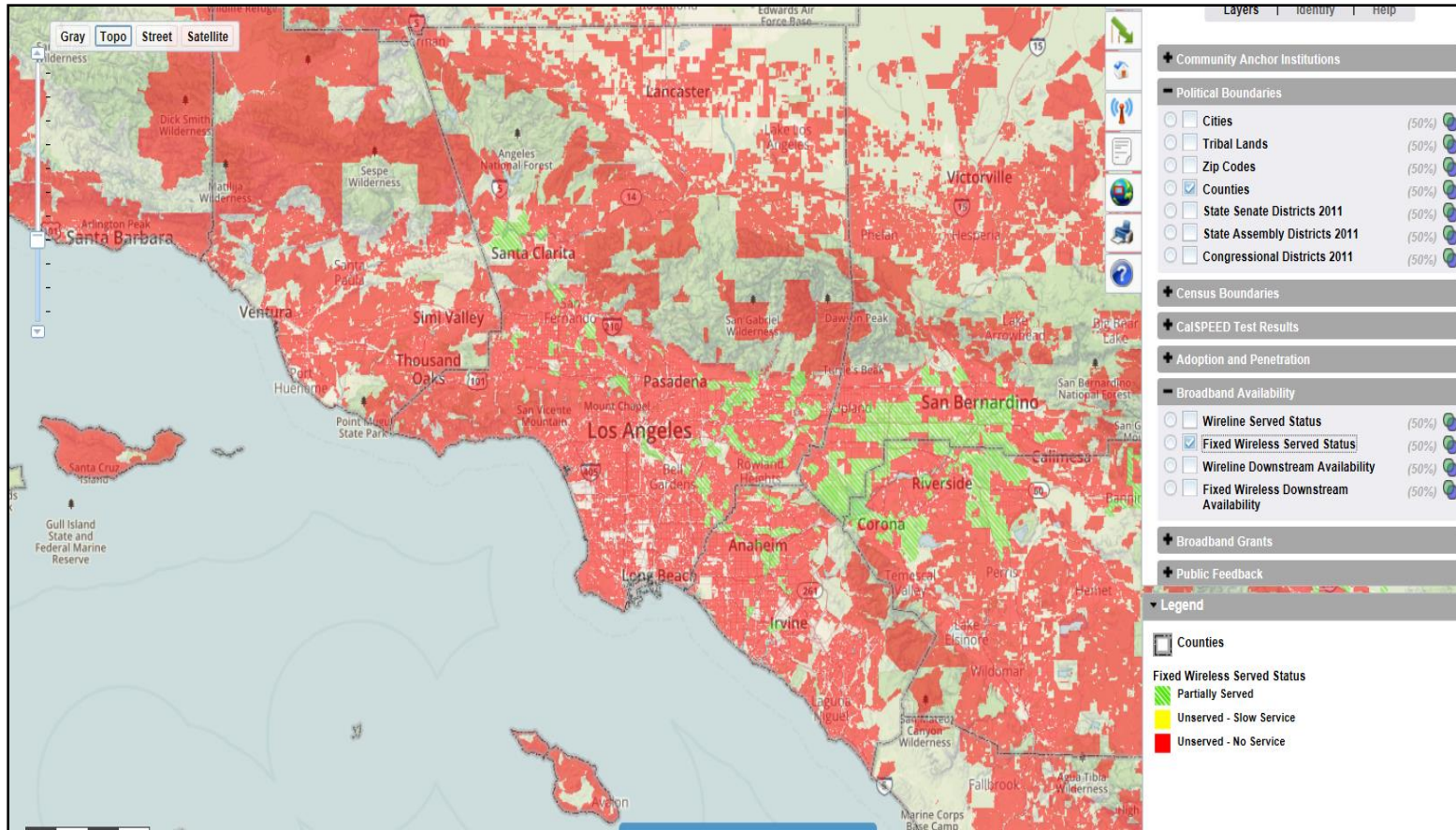


# Wireline Broadband Service



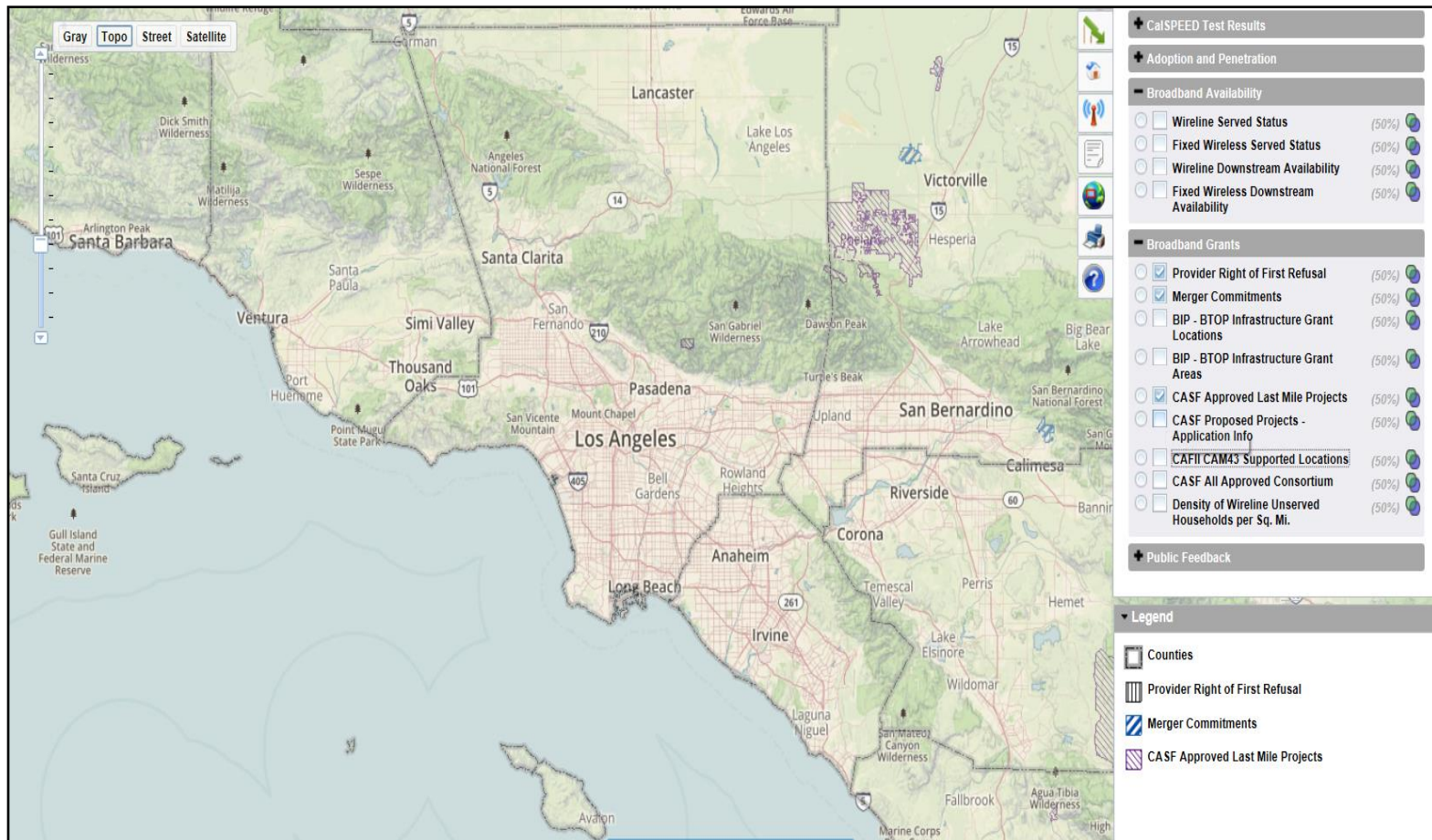


# Fixed Wireless Service





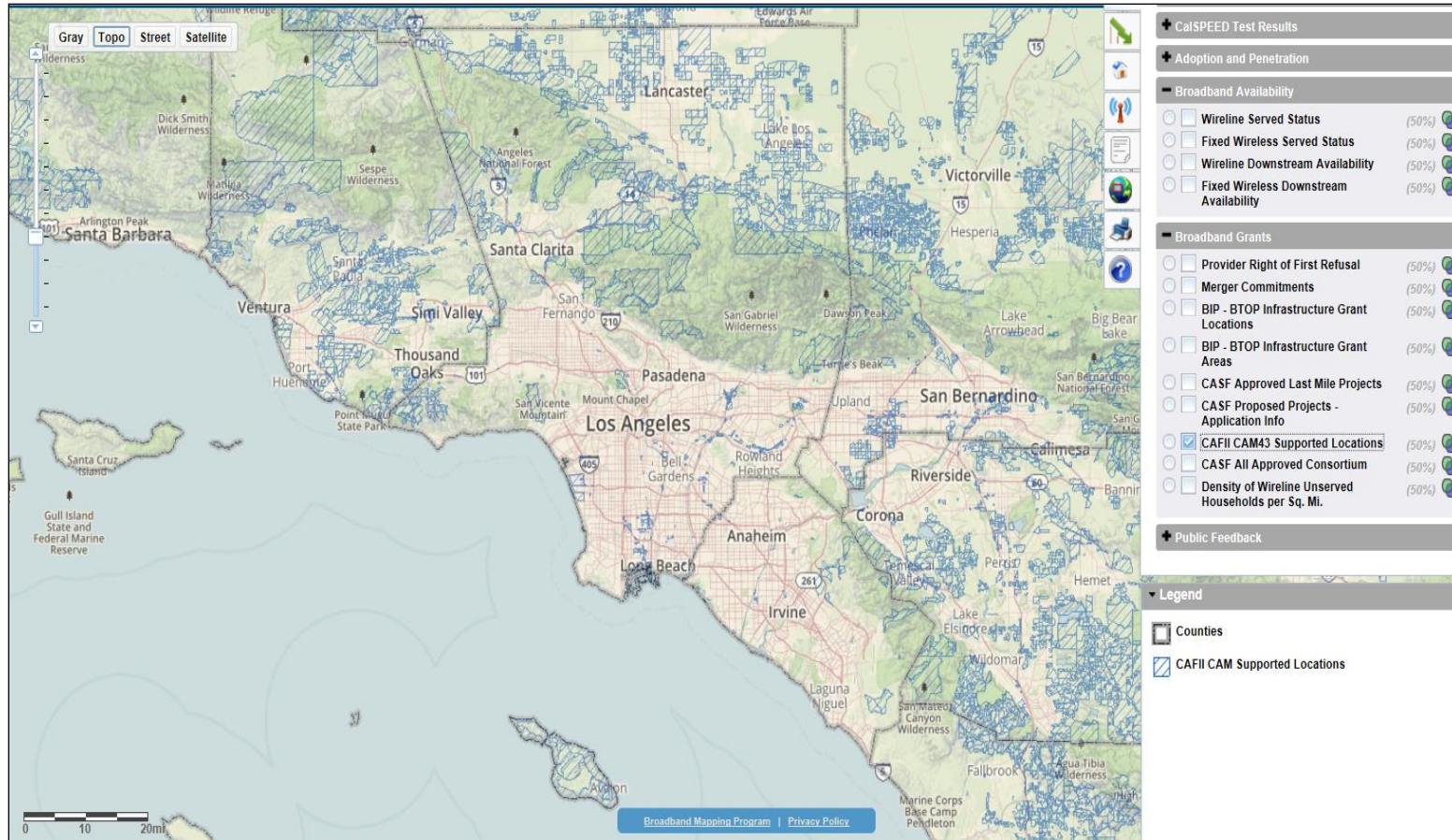
# Planned Builds







# Planned Builds II





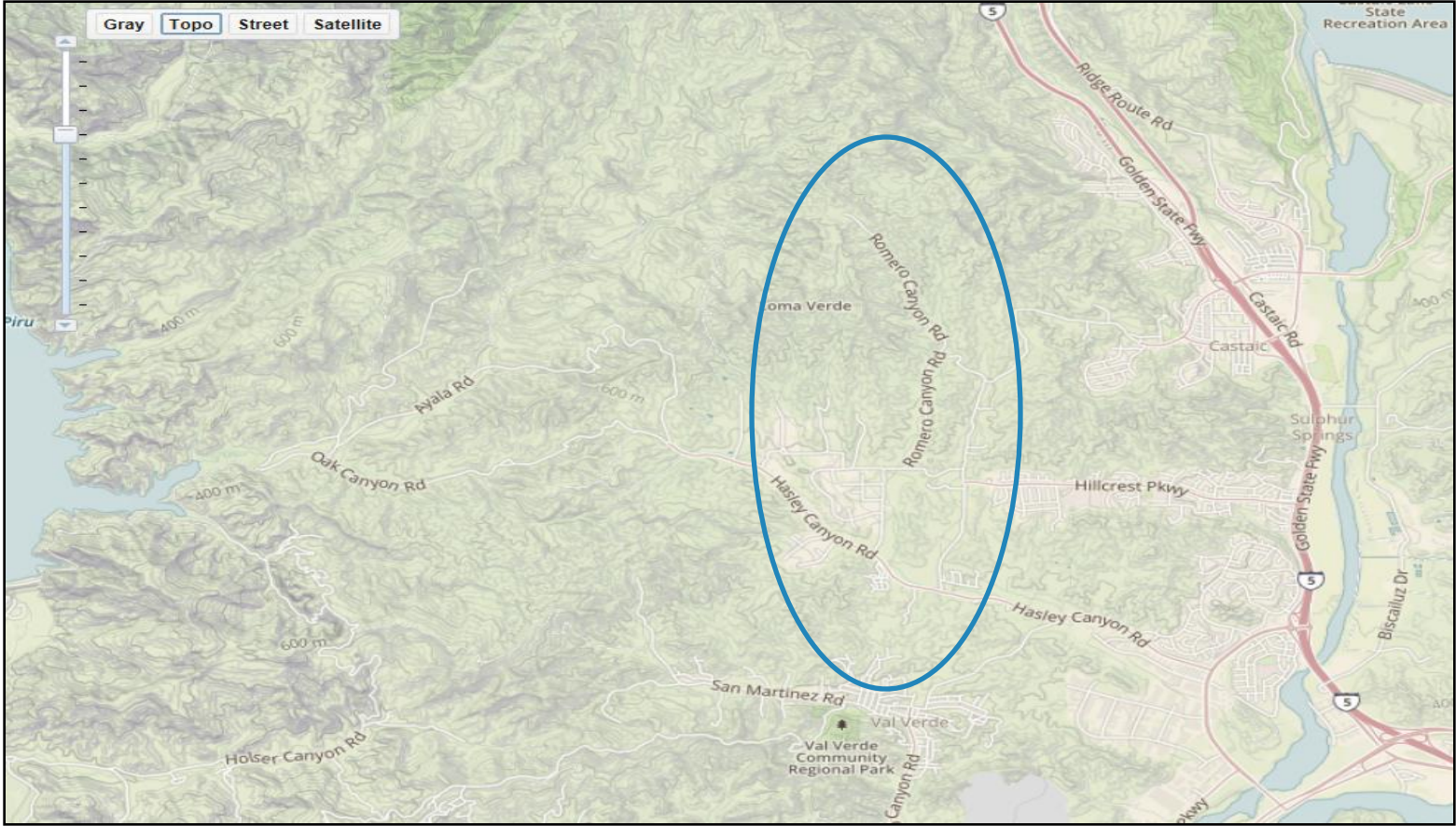
# Regional Infrastructure Case Study

- Infrastructure  
Hasley Canyon



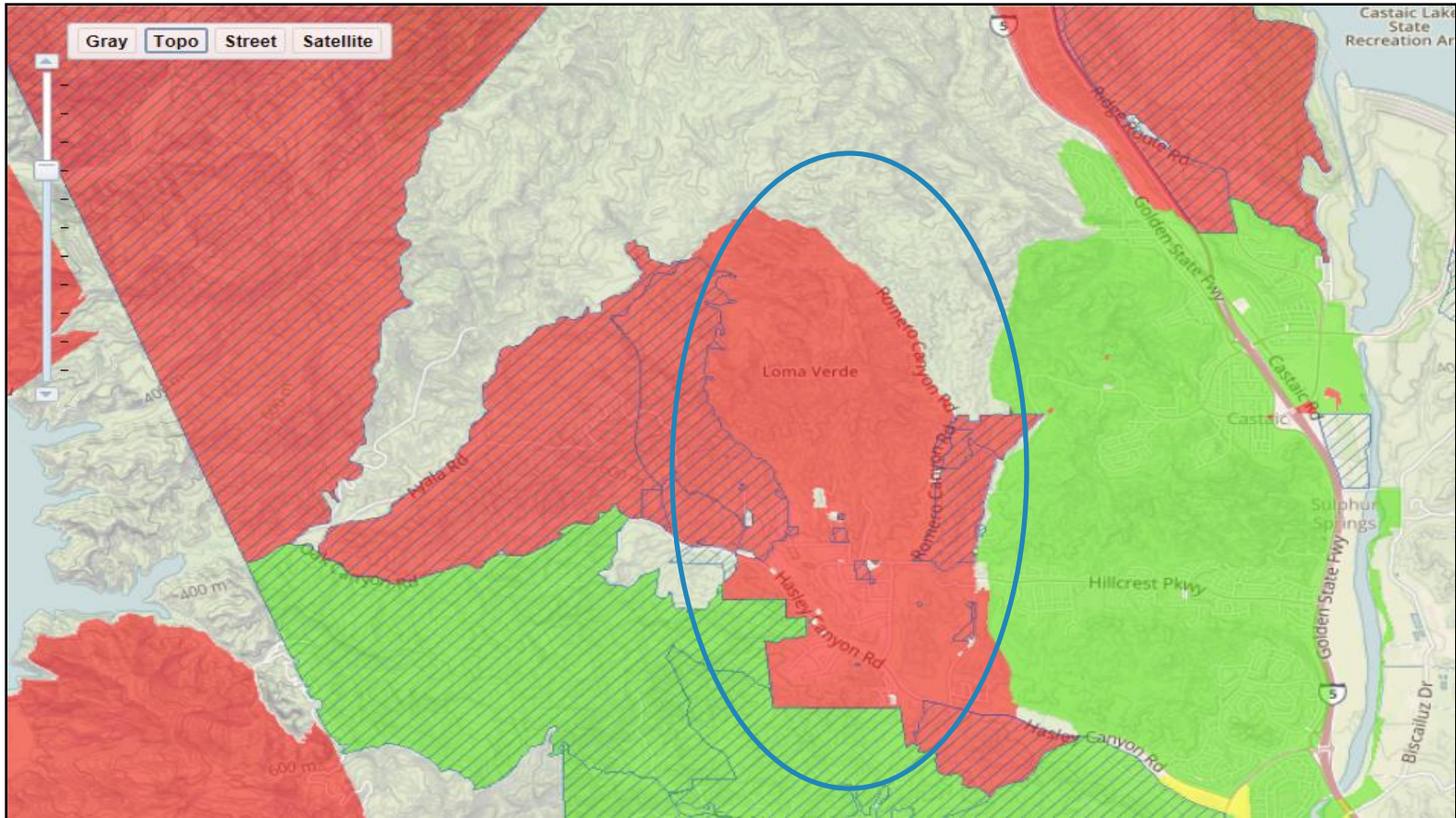


# Hasley Canyon





# Hasley Canyon Wireline Service





# Demographic Statistics

Hasley Canyon	
Density threshold: (unserved blocks with lower density excluded)	> 5
Census blocks:	47
Households:	378
Households in blocks Unserved with Slow Service:	0
Households in blocks with Unserved No Service:	378
Overall density (includes only selected blocks):	68.27
Population	1,136
MHI 2014	\$ 30,421
Households in blocks > 20% poverty:	0
Households in CAF II blocks:	55
Households in ROFR blocks:	0
Households in Merger Commitment blocks:	0
Fixed wireless	No





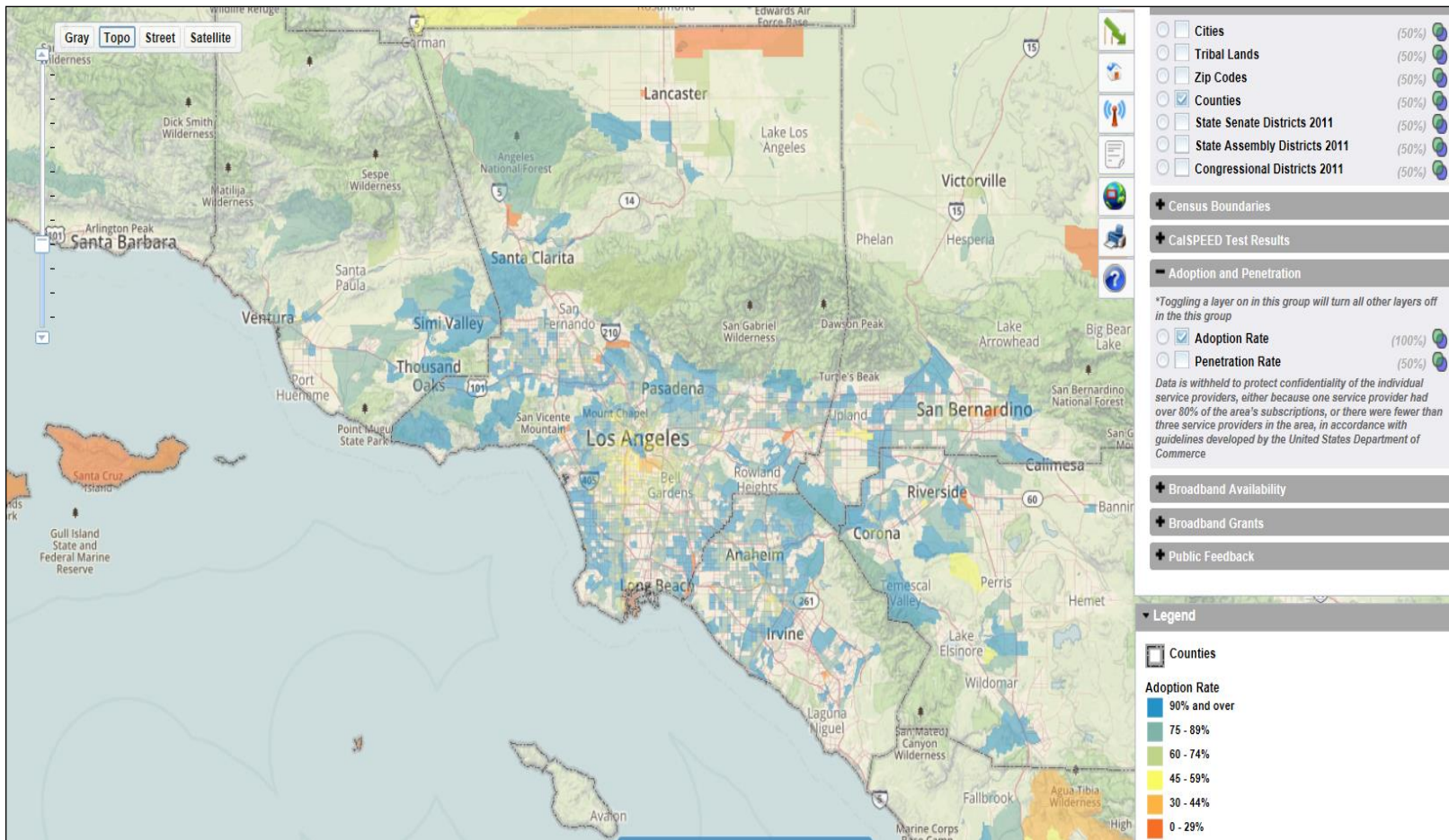
# AB 1665 Key Goal

- Increase publicly available or after-school broadband access and digital inclusion, e.g. digital literacy training programs and public education to communities





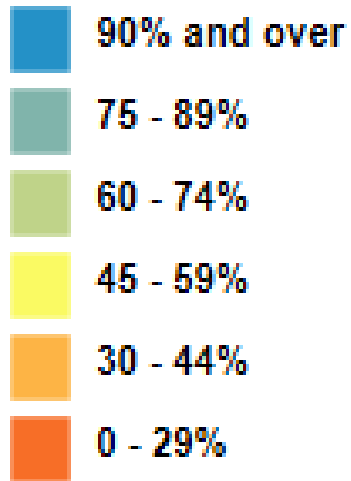
# Adoption Layer





# Adoption Rates

## Adoption Rate



Data withheld







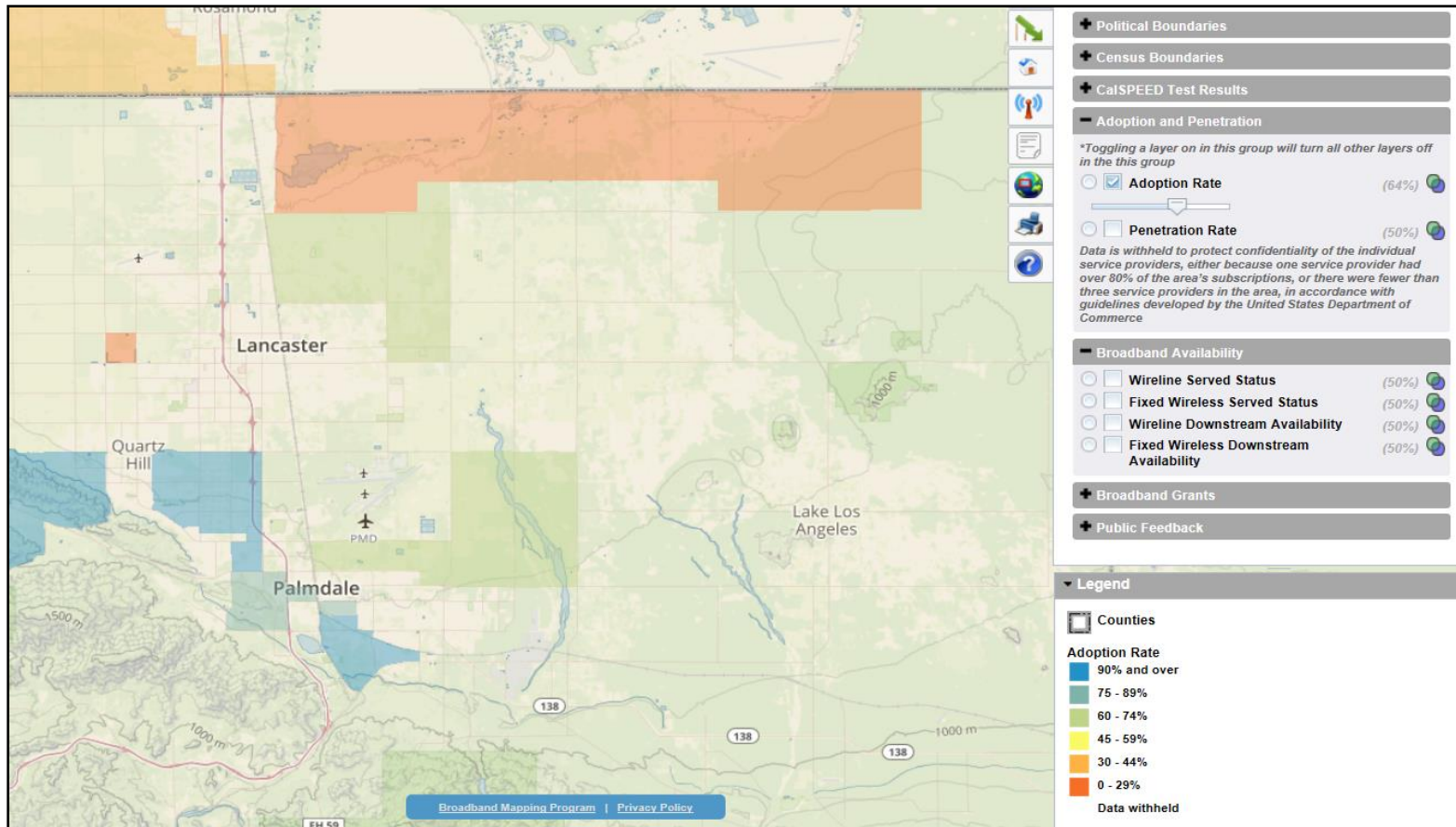
# Regional Adoption Case Studies

- Antelope Valley
- Paramount
- San Pedro
- Pico-Union



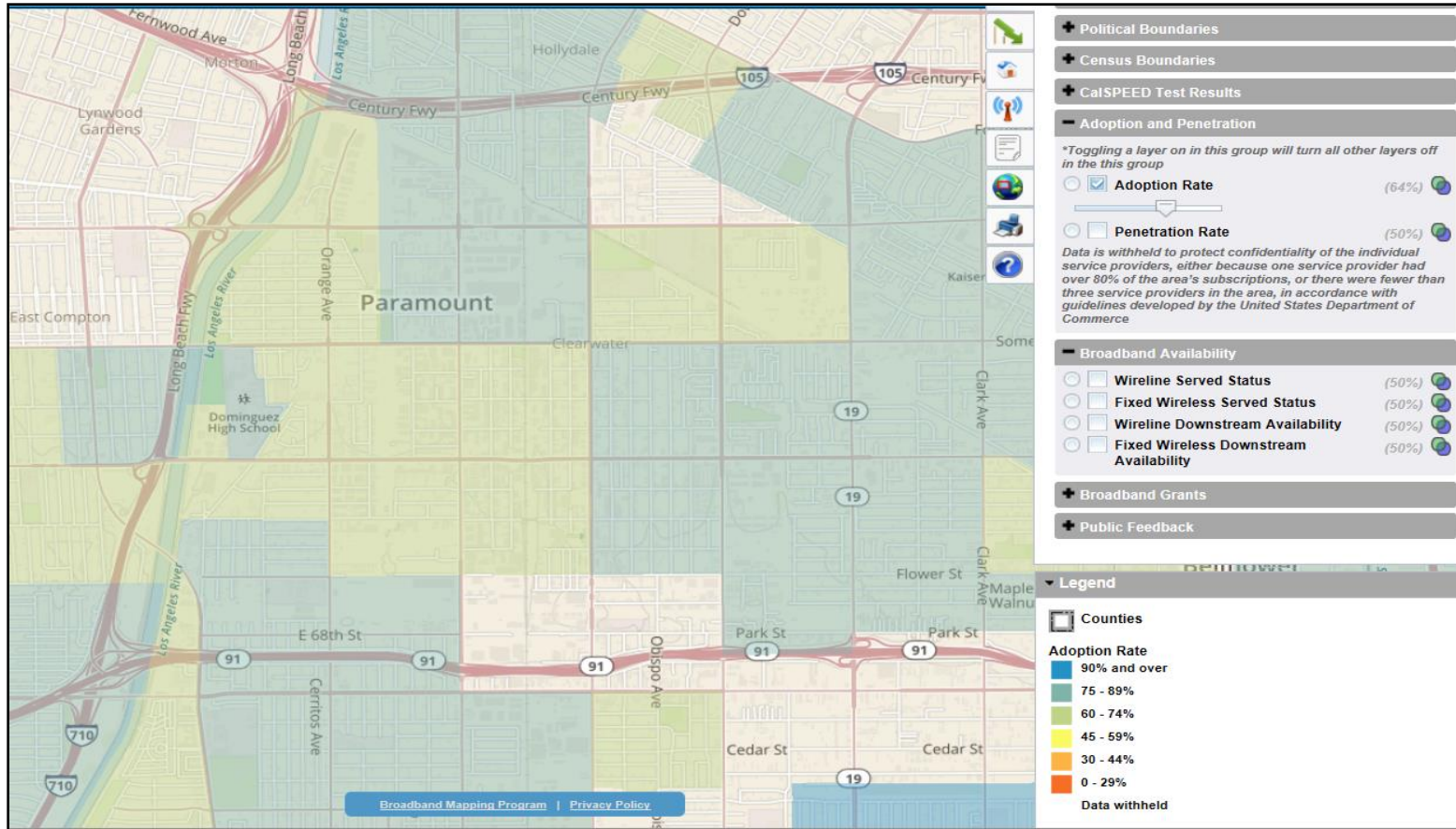


# Antelope Valley area



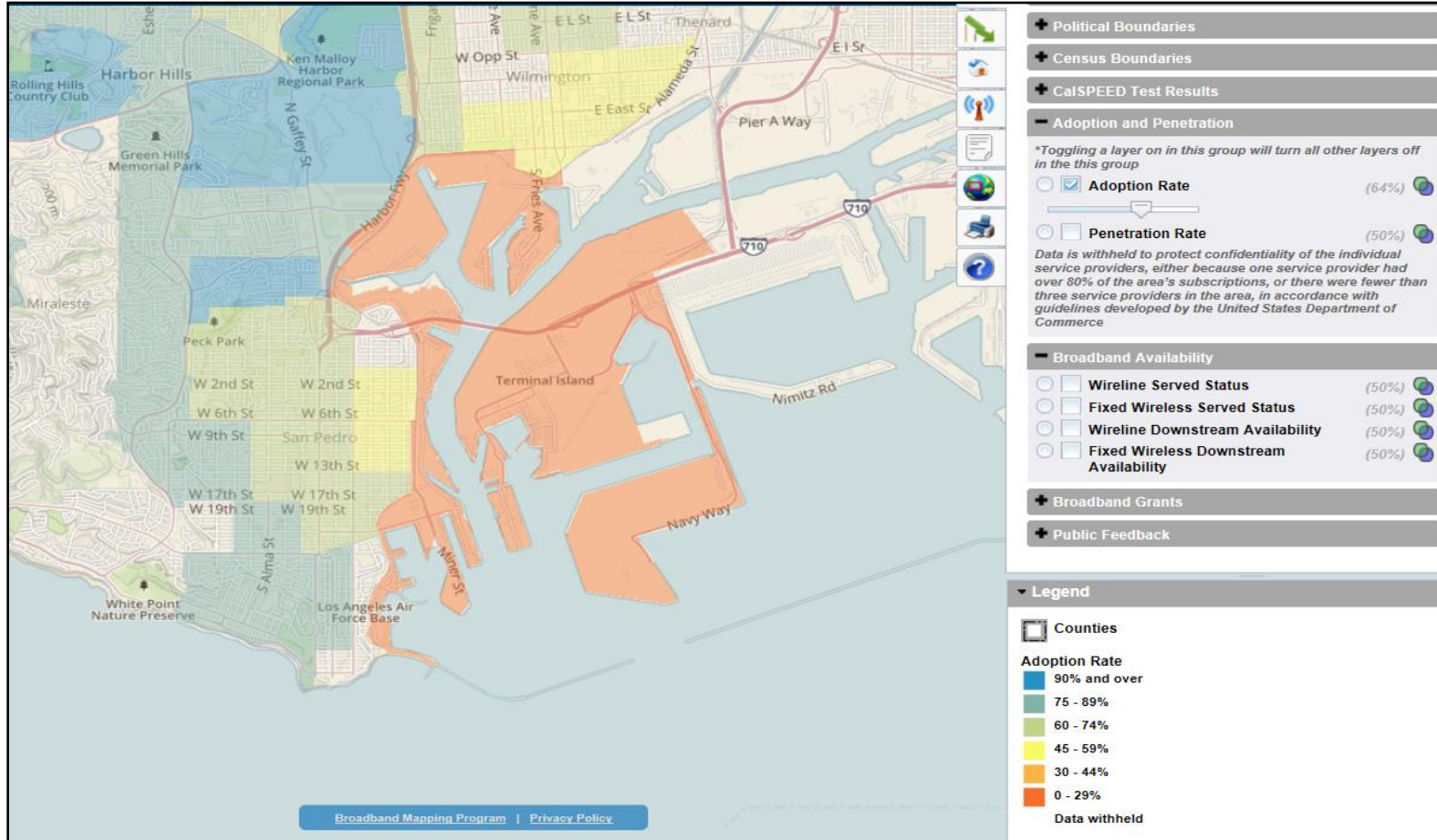


# Paramount



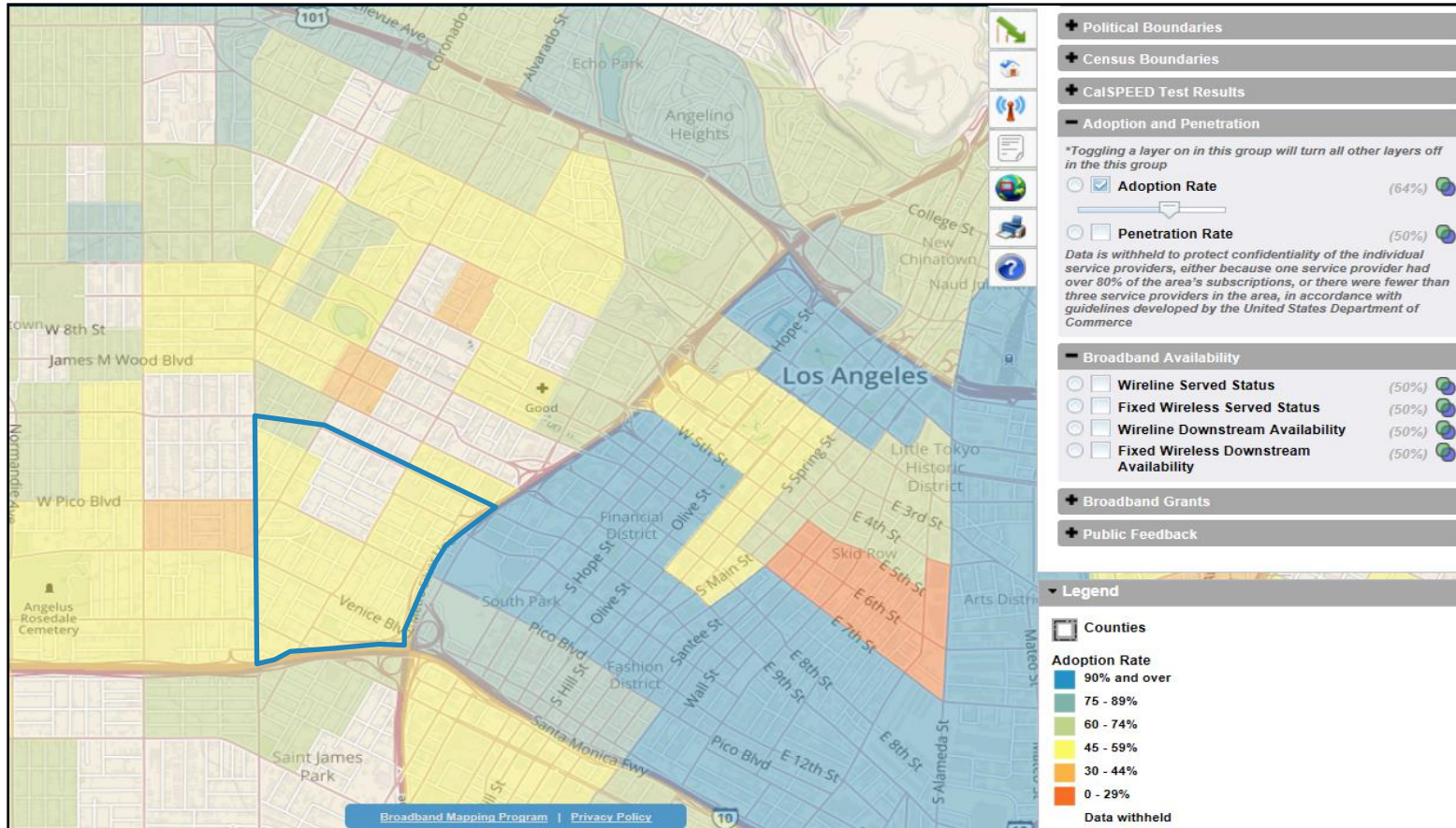


# San Pedro





# Pico-Union





**Thank you!**

