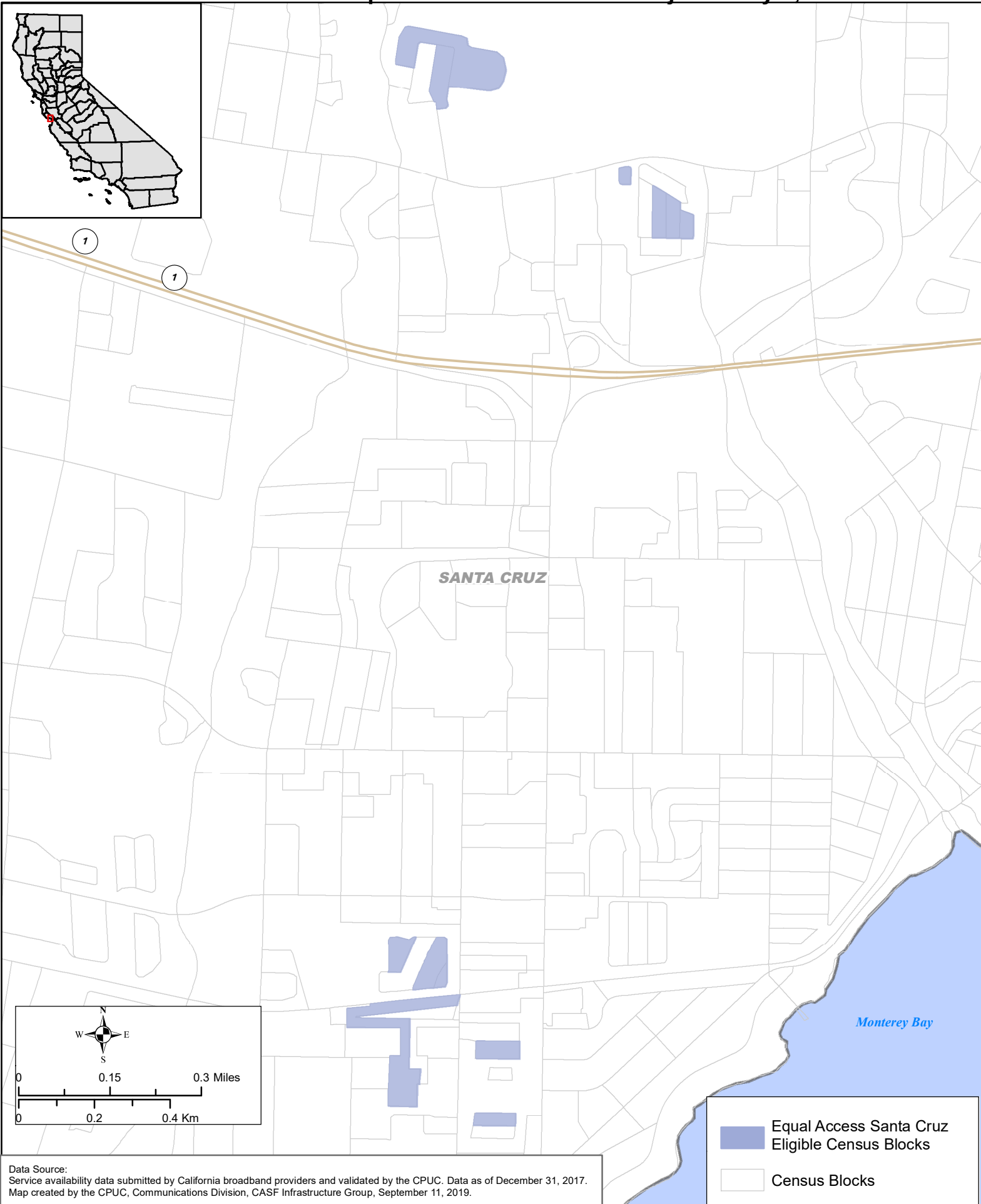




STATE OF CALIFORNIA

Proposed CASF Infrastructure Grant Application

Cruzio Media - Equal Access Santa Cruz Project - May 1, 2019



Data Source:
Service availability data submitted by California broadband providers and validated by the CPUC. Data as of December 31, 2017.
Map created by the CPUC, Communications Division, CASF Infrastructure Group, September 11, 2019.