

## PST Scott Road Project Summary

### **Applicant:**

Plumas-Sierra Telecommunications

U-Number: U-7218-C

### **Contact Person:**

Corby Erwin

Member Services Manager

73233 State Route 70

Portola, CA 96122

530-832-6034

cerwin@psrec.coop

### **Project Title:**

PST Scott Road Mid-Mile / Last-Mile Broadband Project

### **Proposed Project Area Location:**

Scott Road area, Lassen and Sierra Counties

### **Project Type:**

Hybrid Mid-Mile and Last-mile

### **CASF Funding Requested:**

\$ 4,307,475 in grant funds

### **Description of the Project:**

To leverage the current PST mid-mile fiber network for which Plumas-Sierra Telecommunications was awarded ARRA and CASF funds, PST is now applying for additional CASF funding to deploy further mid-mile and last-mile broadband networks to serve the Scott Road area of Lassen and Sierra counties.

The mid-mile network expansion is vital to reach the deployment area for the last-mile target residences. The last-mile network will use fiber optic wireline technology interconnected with PST's mid-mile fiber network to offer service to 61 households in this unserved area of Lassen and Sierra counties.

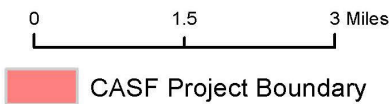
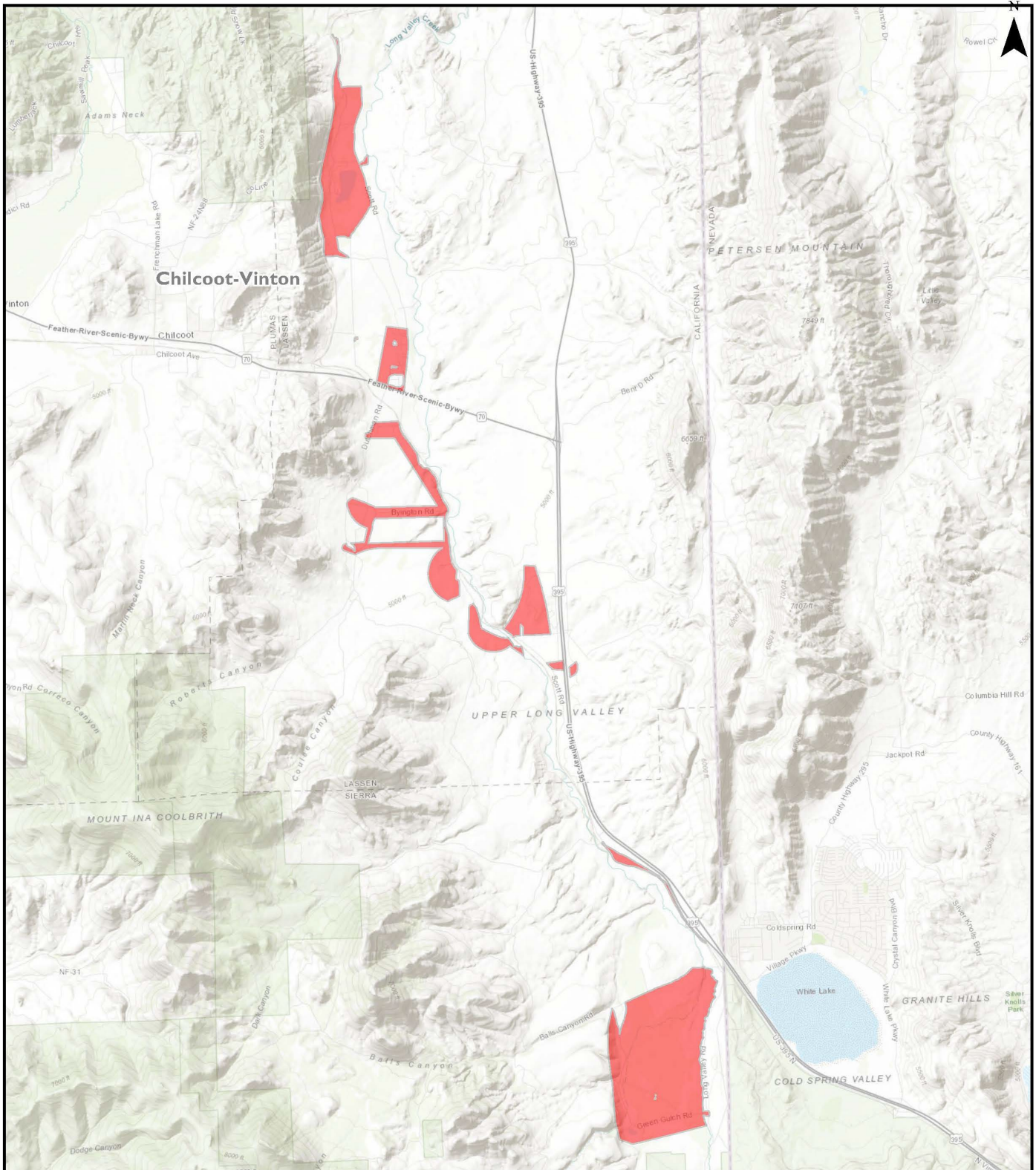
Service offerings will include minimum speeds of 10Mbps down/1Mbps up and maximum speeds of up to 1Gbps down/1Gbps up. PST's service offerings will not have data caps.

The use of fiber optics will allow PST to provide the households in this application with the most current technology, offering an improved quality of life that is not available to these residents now because of their current broadband isolation.

The COVID-19 Pandemic has highlighted the need for broadband services for working and learning from home. This project will provide much needed service in these rural areas of California.

**Map of the proposed project follows on the next page.**

# Plumas Sierra Telecom - CASF Project: Scott Road



Date: March 12th, 2020



GEOGRAPHICAL INFORMATION CENTER  
California State University, Chico

**Fixed Broadband Served Status by Census Block within project area:**

	<b>Unserved</b>		
	<b>- Slow Service</b>	<b>Unserved - No Service</b>	<b>Unserved Total</b>
<b>Population</b>	0	134	<b>134</b>
<b>Households</b>	0	61	<b>61</b>
<b>Housing Units</b>	0	88	<b>88</b>
<b>Addresses (from Item 4)</b>	0	37	<b>37</b>

This project will bring service to 37 address locations which are outlined in Item 4. These addresses are derived from the most current Lassen and Sierra County parcel database.

**Census Blocks to be served:**

- 060350406003142
- 060350406003161
- 060350406003162
- 060350406003164
- 060350406003165
- 060350406003166
- 060350406003169
- 060350406003170
- 060350406003208
- 060350406003210
- 060350406003222
- 060350406003243
- 060350406003247
- 060350406003248
- 060350406003248
- 060350406003249
- 060350406003251
- 060350406003254
- 060350406003255
- 060350406003256
- 060350406003257
- 060350406003268
- 060350406003271
- 060350406003274

060350406003283  
060350406003287  
060350406003290  
060350406003302  
060910100001010  
060910100001024  
060910100001027  
060910100001028  
060910100001095  
060910100001097

**Funding Level:**

The area applied for is 100% unserved with no service (Dial-up only) according the CPUC's 2019 Housing Unit projections. No existing CAF II areas are within project area. Requesting 100% project funding.

The project area includes 34 census blocks in Lassen and Sierra counties in the community of Scott Road. This area encompasses 32.8 Square Miles.

**Median Household Income:** \$57,679

**Anchor Institutions, Public Safety Locations and Businesses:**

The project area does not include any Anchor Institutions or Public Safety Locations as identified by the current California Interactive Broadband Map.

There are no businesses in the proposed project area which will be served.

**Major Infrastructure and Equipment to be Deployed:**

- 1 E7 Chasis
- 2 GPON card
- 16 40K SFPs

**Aerial and Underground Installation:**

- 0 Miles of underground infrastructure
- 37.9 Miles of overhead infrastructure

**Estimated Construction Timeline:** 9 months

**Proposed Broadband Project Plan:**

The PST Scott Road Mid-Mile / Last-Mile Broadband Project plans to use fiber optic cable to provide download speeds of up to 1 Gbps and upload speeds of up to 1 Gbps with no data caps.

PST is leveraging its current mid-mile fiber network for which it was awarded ARRA and CASF funds, and existing infrastructure of its parent company, Plumas-Sierra Rural Electric Cooperative to deploy this additional mid-mile and last-mile broadband network to serve the Scott Road area of Lassen and Sierra counties. The mid-mile network expansion is vital to reach the deployment area for the last-mile target residences because there is no existing mid-mile infrastructure to interconnect with for this project, and without it, PST will not be able to provide service to these areas.

Plumas-Sierra Telecommunications will utilize existing public utility easements, but believes that this mid-mile/last-mile broadband project will require CEQA review with BLM. To attain CEQA compliance, PST will work with BLM to complete necessary environmental reviews.

PST is not disputing the Broadband Map depiction of served status.

PST is not seeking Ministerial Review of this project.