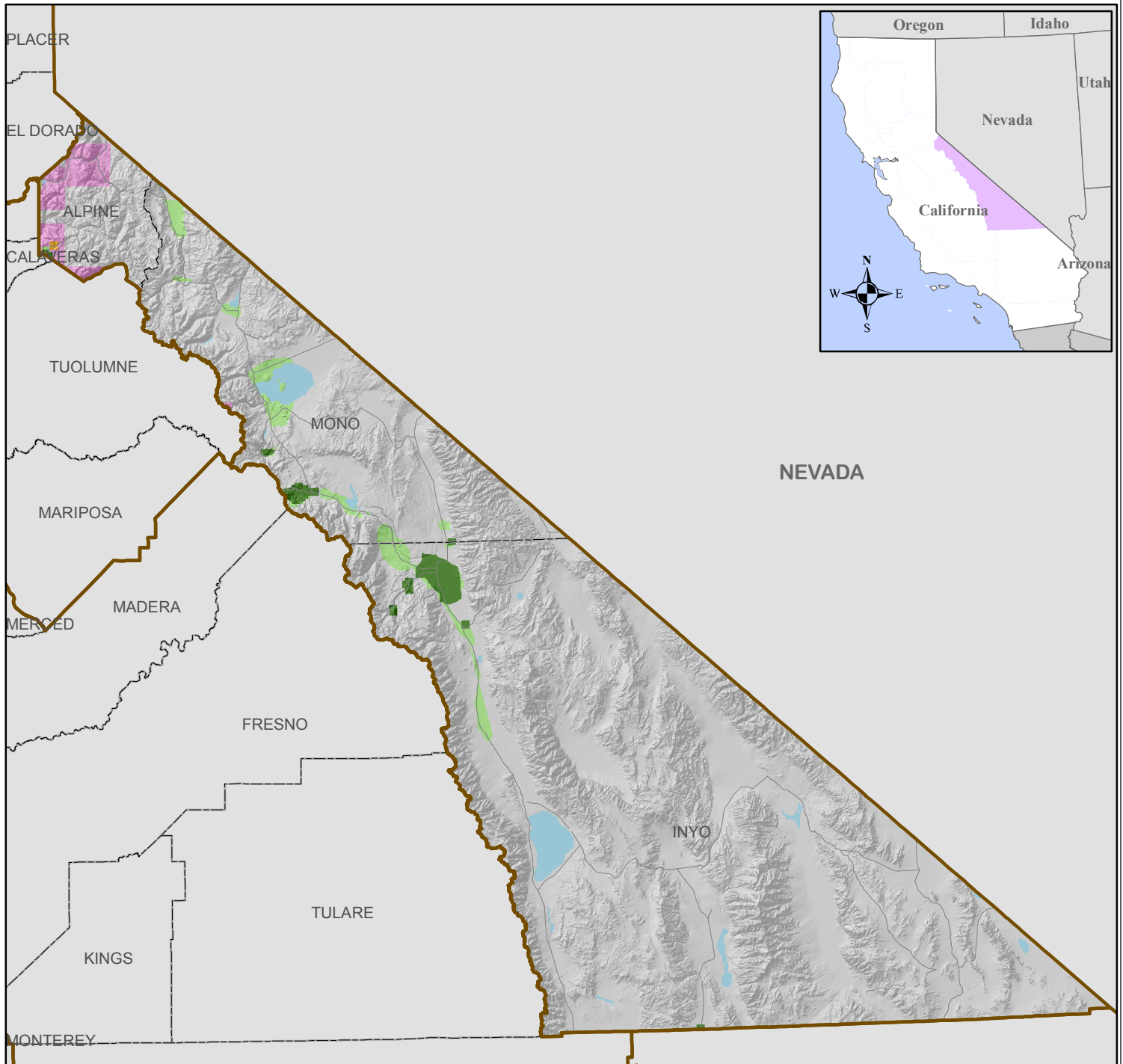




# CALIFORNIA: EAST SIDE REGION

## Wireline and Fixed Wireless Broadband Availability



### BROADBAND AVAILABILITY

Existing Service		Approved Projects			
	0.5 - 1 Mbps		0.5 - 1 Mbps		Unknown Speed
	1 - 5 Mbps		1 - 5 Mbps		Counties
	5 - 10 Mbps		5 - 10 Mbps		Broadband Regions
	10 - 100 Mbps		10 - 100 Mbps		Highways
	0.1 - 10 Gbps		0.1 - 1 Gbps		

Note: Includes fixed wireless services

Data Sources:  
 1) California Broadband Task Force. The State of Connectivity: Building Innovation Through Broadband, January 2008.  
 2) California Public Utilities Commission (CPUC), CASF Applications, 2008.

Map created by the CPUC, Communications Division, Video Franchising and Broadband Deployment Group, July 2009.

