

## Overview of the FCC's CAF II program

### *Build-Out Commitment over a 5 year period*

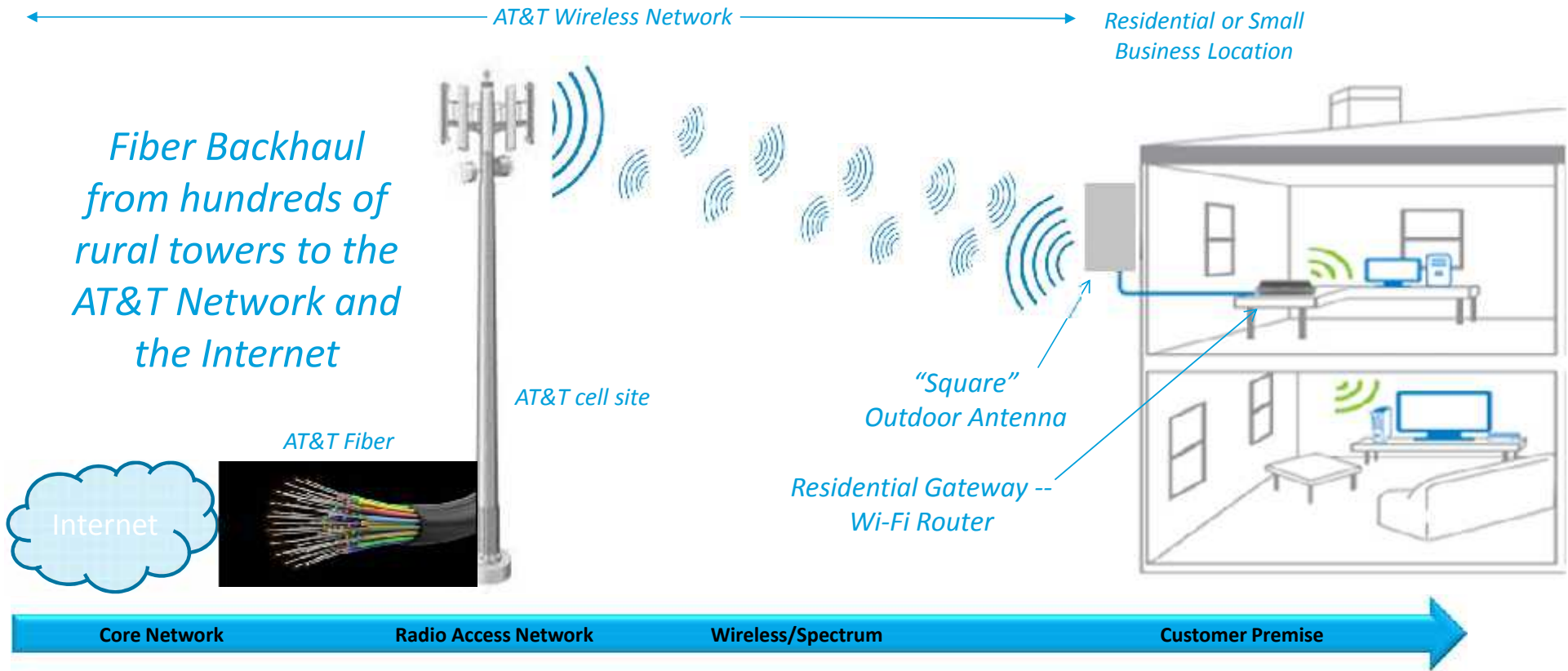
- 40% coverage in each state by end of 2017
- 60% by 2018, 80% by 2019, 100% by 2020
- Need to be able to provide service within 10 days of order
- Minimum 10Mbps downstream & 1Mbps upstream
- 170GB monthly usage required

- *In California, AT&T will use the CAF II support to offer high-speed Internet access to more than 141,000 homes and small businesses in the FCC-specified census blocks.*
- AT&T FWI service will support speeds of at least 10 Mbps download and 1 Mbps upload.
- AT&T's Fixed Wireless Internet is a service that uses a fixed-wireless "last mile" connection between the fiber at a cell tower and the customer premises to provide high-speed Internet access.

### ***Majority of AT&T's CAF II deployment is through Fixed Wireless Internet***

- Fixed Wireless Internet (FWI) is a service that uses a fixed-wireless “last mile” connection between the fiber at a cell tower and the customer premises to provide high-speed Internet access.
- This service supports speeds of at least 10 Mbps download and 1 Mbps upload.
- Customers will also have the ability to bundle DirecTV video services and/or AT&T postpaid wireless services seamlessly with AT&T Fixed Wireless Internet.
- Current pricing is \$50-\$70/month depending on bundling. Lifeline discount available for eligible customers.
- The service will require the installation of a small wireless antenna at the customer premise that will connect to a wireless router in the home.
- Cell coverage expansion – concurrent with the FWI build, AT&T Mobility Coverage will be expanded in many areas.

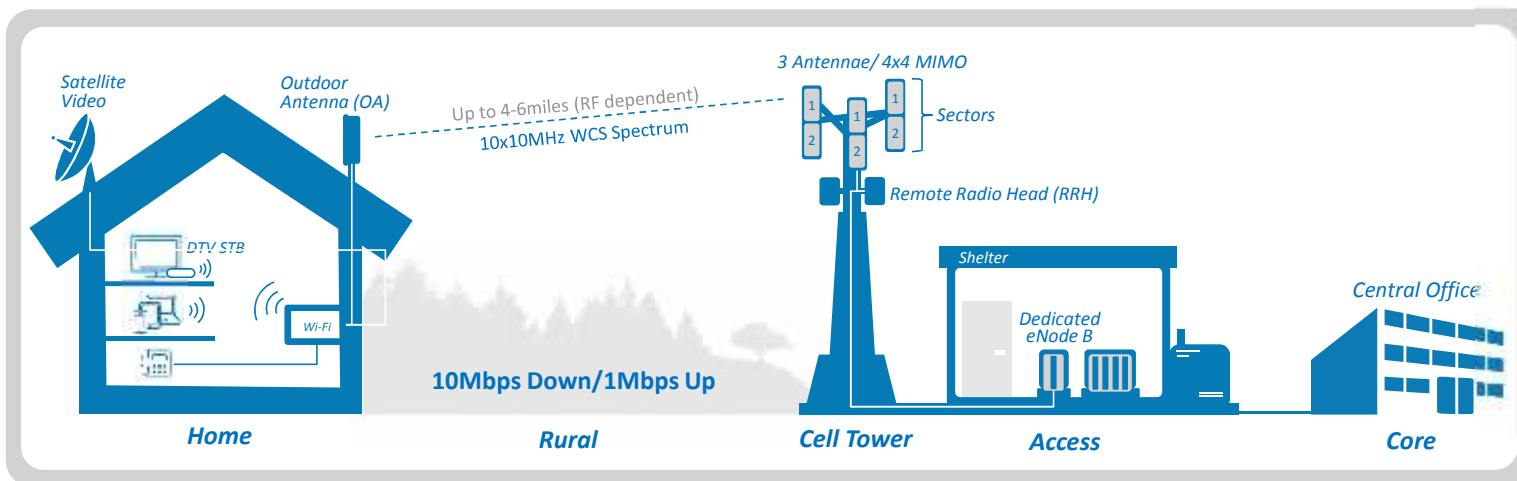
# AT&T Fixed Wireless Internet<sup>SM</sup> Overview



Note: Illustrative only and not to scale. While the expectation is most locations will be served via FWI, AT&T may serve required locations via other technologies



# How does it work?



- Using LTE, Band 30 (WCS-2.3Ghz Spectrum)
- Outdoor antenna connecting to wireless network
- In-home experience just like any Internet service



Arris 5268AC



AT&T Proprietary (Restricted)

Only for use by authorized individuals or any above-designated team(s) within the AT&T companies and not for general distribution





**Cell Site Shelter  
Electronics**



**FWI Enabled  
Cell Tower**



**Antenna at  
Customer Premise**



**Grounding and  
Power**



**Residential Wi-Fi  
Gateway**



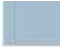

**FWI Enabled Cell Site**

# CAF II Build Progress in California – EOY 2017



**California:**  
**Planned FWI Site Locations will be Broadly  
Distributed Across AT&T's  
Rural Territory throughout California**

Legend

-  AT&T Traditional Service Territory
-  CAFII Supported Area





## AT&T CAF II Build Progress in California: Locations Reached by CAF II Build as of EOY-2017

- The majority of these living units are reached by fixed wireless technology
- Initial build in 2017 focused on areas where FWI could be added to existing cell sites
- Build in 2018 and beyond relies on new site builds and associated permitting

COUNTY	Locations
Alameda	194
Amador	1,009
Butte	410
Calaveras	1,125
Colusa	220
Contra Costa	902
El Dorado	1,996
Fresno	1,925
Glenn	282
Humboldt	1,325
Imperial	243
Kern	2,874
Kings	435
Lake	244
Los Angeles	2,253
Madera	889
Marin	550

COUNTY	Locations
Mariposa	373
Mendocino	2,264
Merced	1,881
Monterey	5,951
Napa	19
Nevada	527
Orange	93
Placer	904
Riverside	330
Sacramento	1,043
San Benito	118
San Bernardino	675
San Diego	9,288
San Francisco	511
San Joaquin	3,673
San Luis Obispo	1,786
San Mateo	519

COUNTY	Locations
Santa Clara	1,206
Santa Cruz	1,697
Shasta	108
Sierra	29
Siskiyou	5
Solano	355
Sonoma	883
Stanislaus	5,188
Sutter	656
Tehama	271
Tulare	2,591
Tuolumne	762
Ventura	111
Yolo	662
Yuba	535
<b>Grand Total</b>	<b>61,917</b>



Imperial	
CALIPATRIA	11
EL CENTRO	10
NILAND	88
OCOTILLO	134
Imperial Total	243

Riverside	
COR	1
CORONA	239
EASTVALE	41
JURUPA VALLEY	1
RIVERSIDE	48
Riverside Total	330

San Bernardino	
BLOOMINGTON	41
COLTON	594
FONTANA	19
HIGHLAND	17
RIALTO	4
San Bernardino Total	675

San Diego	
ALPINE	731
BONSALL	209
BORREGO SPRINGS	240
BOULEVARD	518
CAMPO	488
CHLA VSTA	1
DEL MAR	2
DESCANSO	191
DESCNSO	1
DULZURA	141
EL CAJON	58
ENCINITAS	2
ESCONDIDO	514
FALLBROOK	240
JACUMBA	127
JAMUL	186
JULIAN	463
LAKESIDE	201
MOUNT LAGUNA	74
OCEANSIDE	3
PALA	215
PALOMAR MTN	2
PAUMA VALLEY	378
PINE VALLEY	77
POTRERO	2
POWAY	16
RAMONA	973
RANCHITA	139
RANCHO SANTA FE	466
SAN DIEGO	406
SAN MARCOS	2
SANTA YSABEL	174
SPRING VALLEY	4
VALLEY CENTER	1448
VISTA	23
WARNER SPRINGS	573
San Diego Total	9288



**To determine eligibility, interested consumers living in the counties listed here may call toll-free**

**1-877-990-0041 or visit the following url for more information:**

**<https://www.att.com/internet/fixed-wireless.html>**

