



# Regional Broadband Overview



**El Centro Public Forum**  
**Owen Rochte, Regulatory Analyst**  
**Communications Division**  
**March 28, 2018**





# Regional Broadband Overview

- Recent Legislation
- Internet Service Providers
- Case Studies





# Regional Perspective









# AB 1665

- Defines served speeds as 6/1 (Mbps)
- Goal is for 98% of households in each consortium region to have at least 6/1
- Leverage existing infrastructure and planned builds, mergers, CAF II
- Focus consortia on infrastructure planning
- CPUC outreach with stakeholders





# <http://www.broadbandmap.ca.gov>

California Interactive Broadband Map Updated on: 12/01/2010

Gray Topo Street Satellite

Layers: Layers | Identify | Help

- Community Anchor Institutions
- Political Boundaries
- County Boundaries
- CalSPED Test Results
- Adoption and Penetration
- Broadband Availability
- Broadband Grants
- Public Feedback

Legend

- Counties

Broadband Mapping Program | Contact Policy





# Internet Service Providers

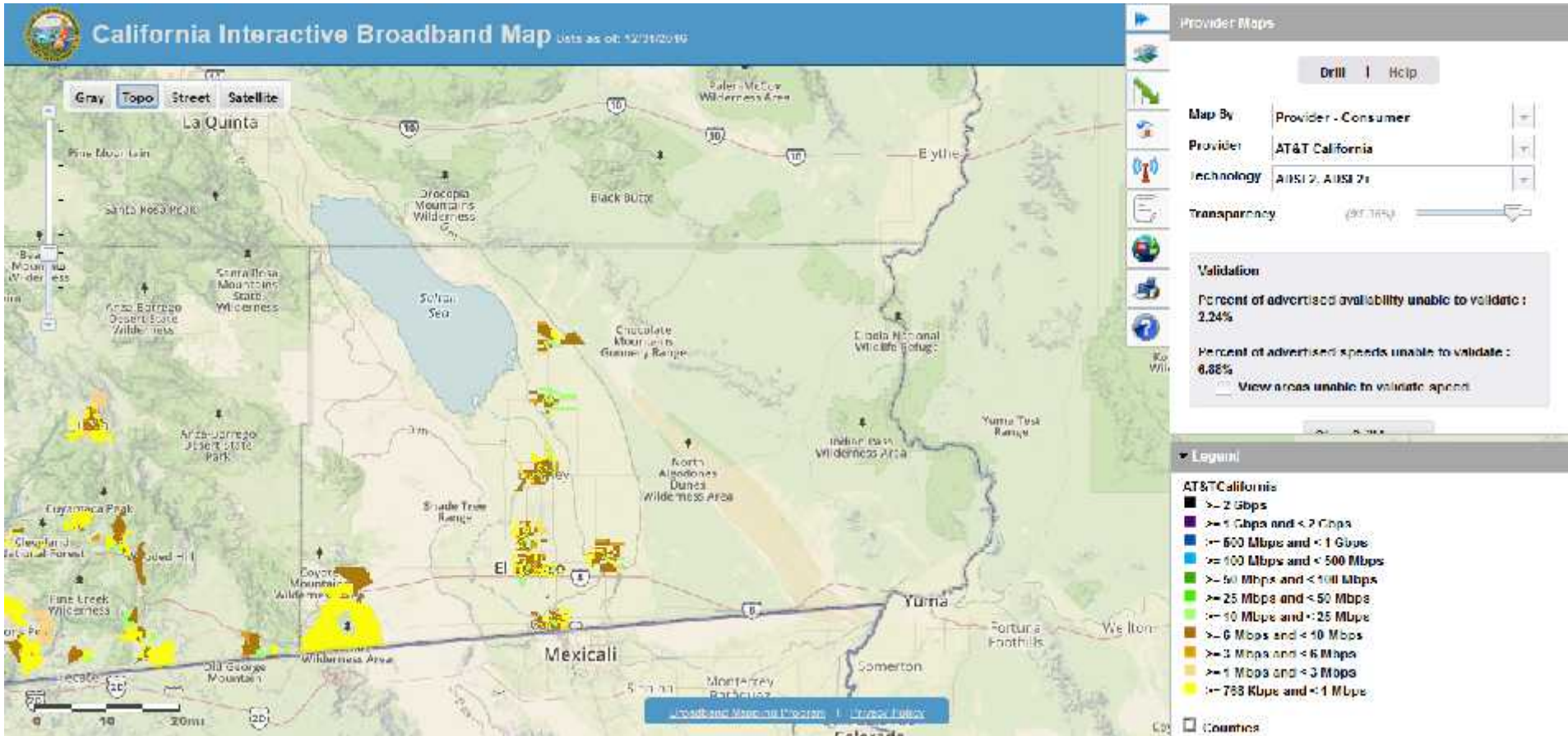
- AT&T
- Charter Communications
- Frontier Communications
- TDS Telecom
- USA Communications
- Others







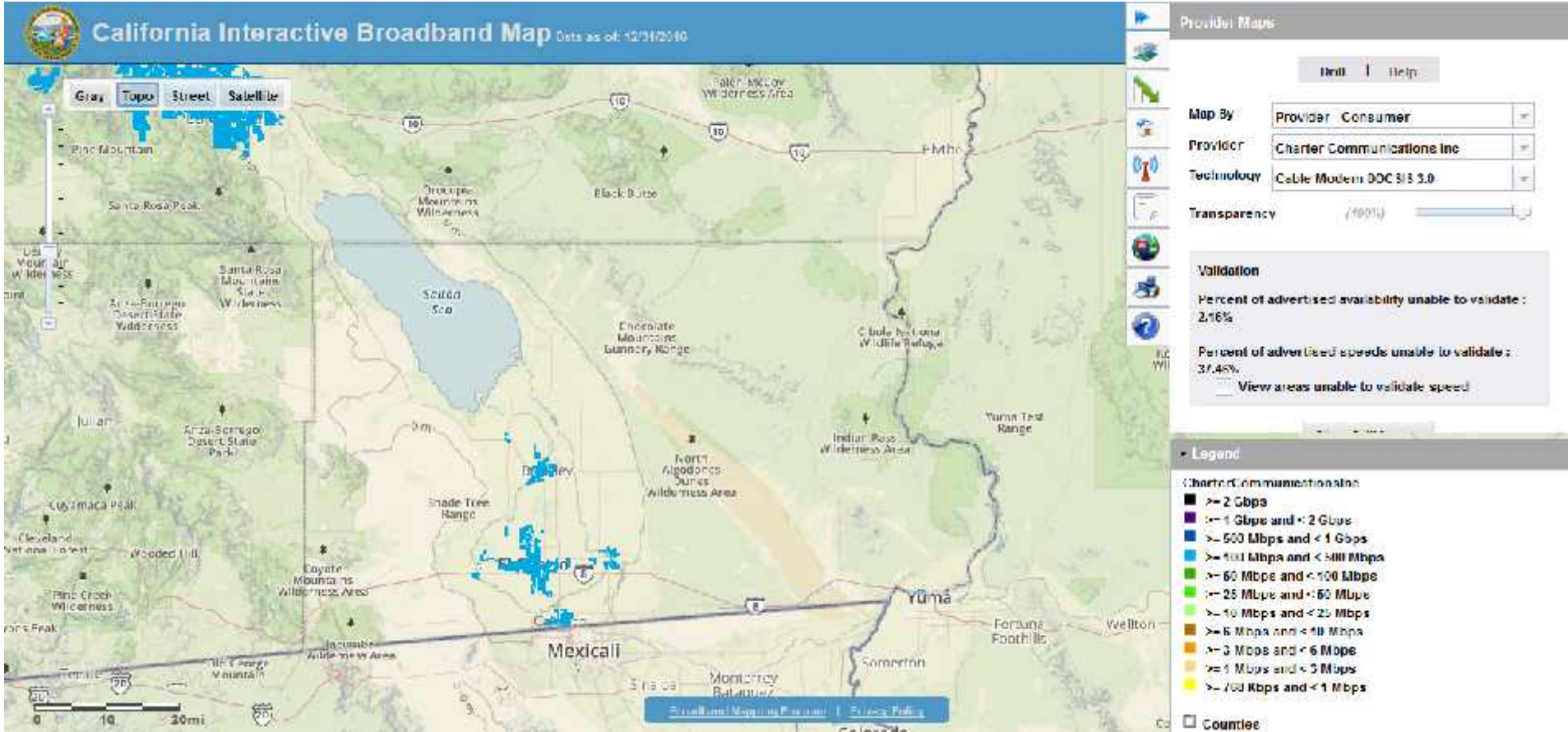
# AT&T





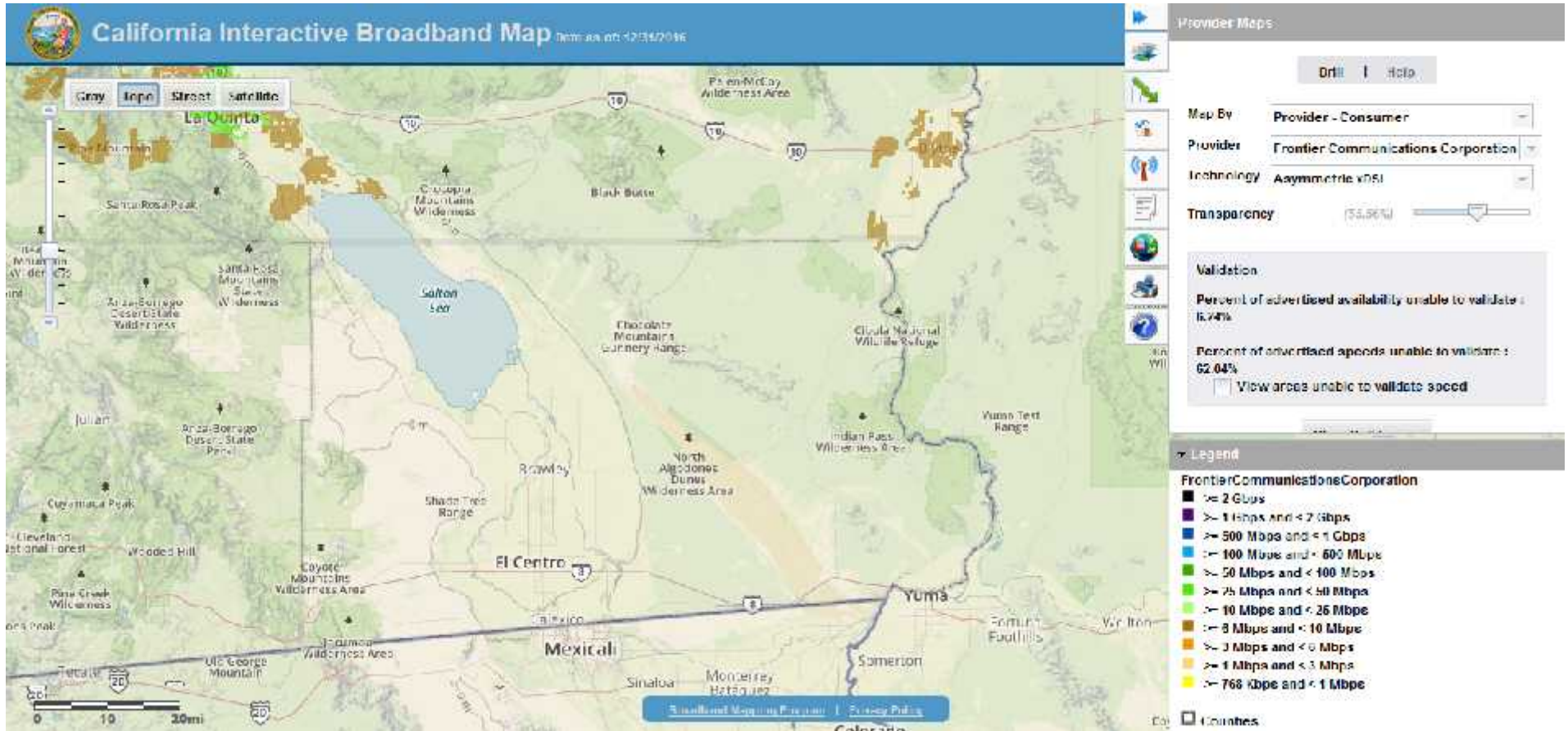


# Charter Communications





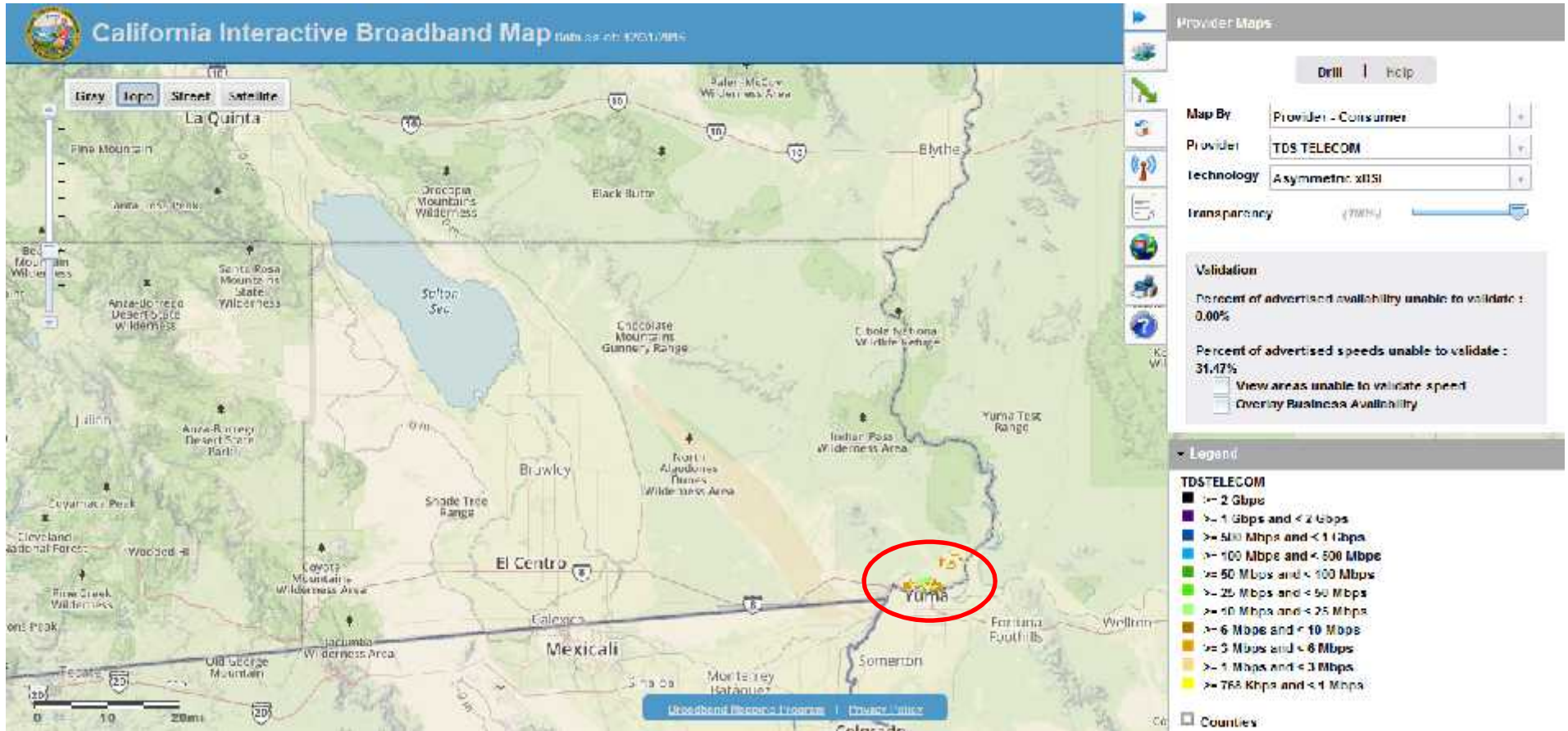
# Frontier Communications







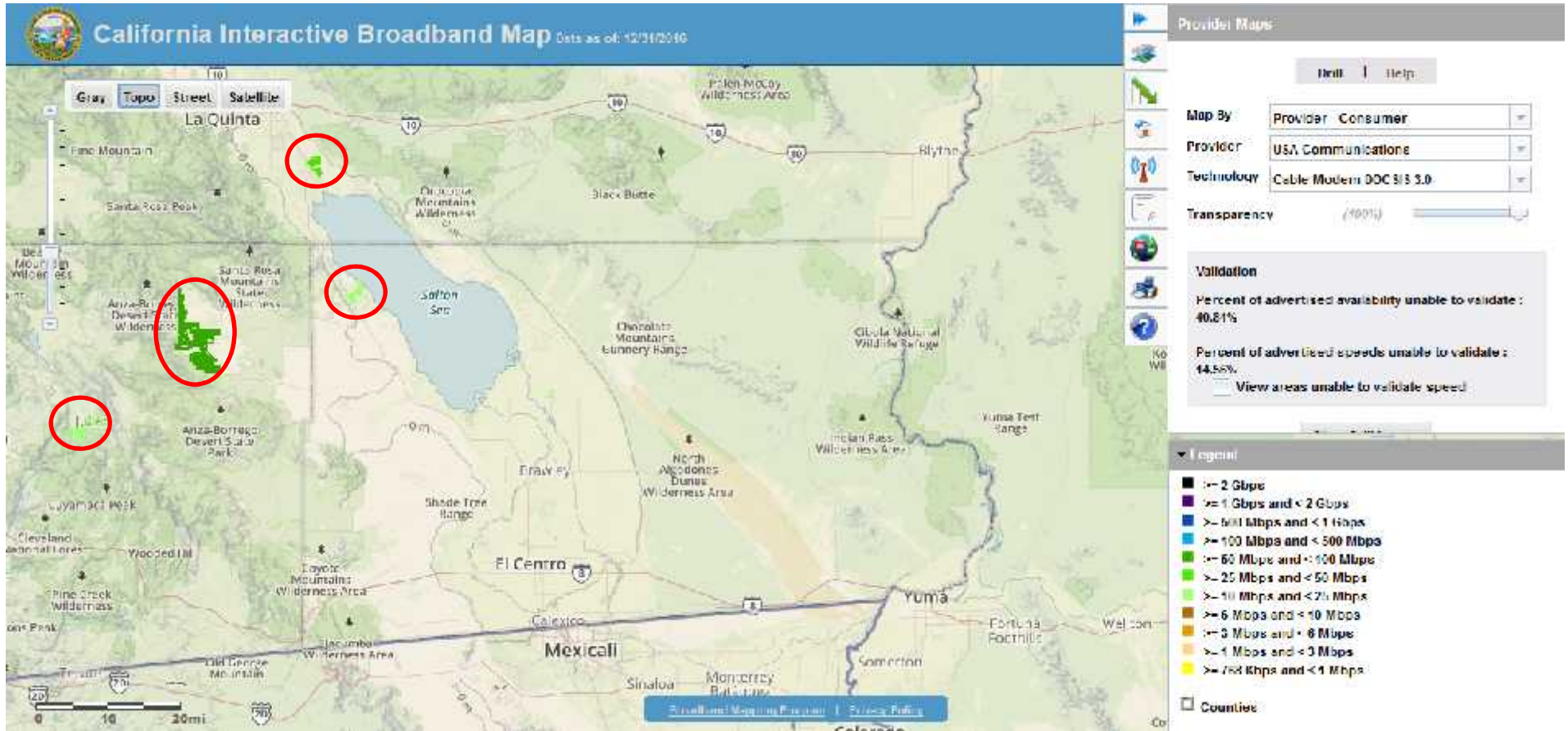
# TDS Telecom





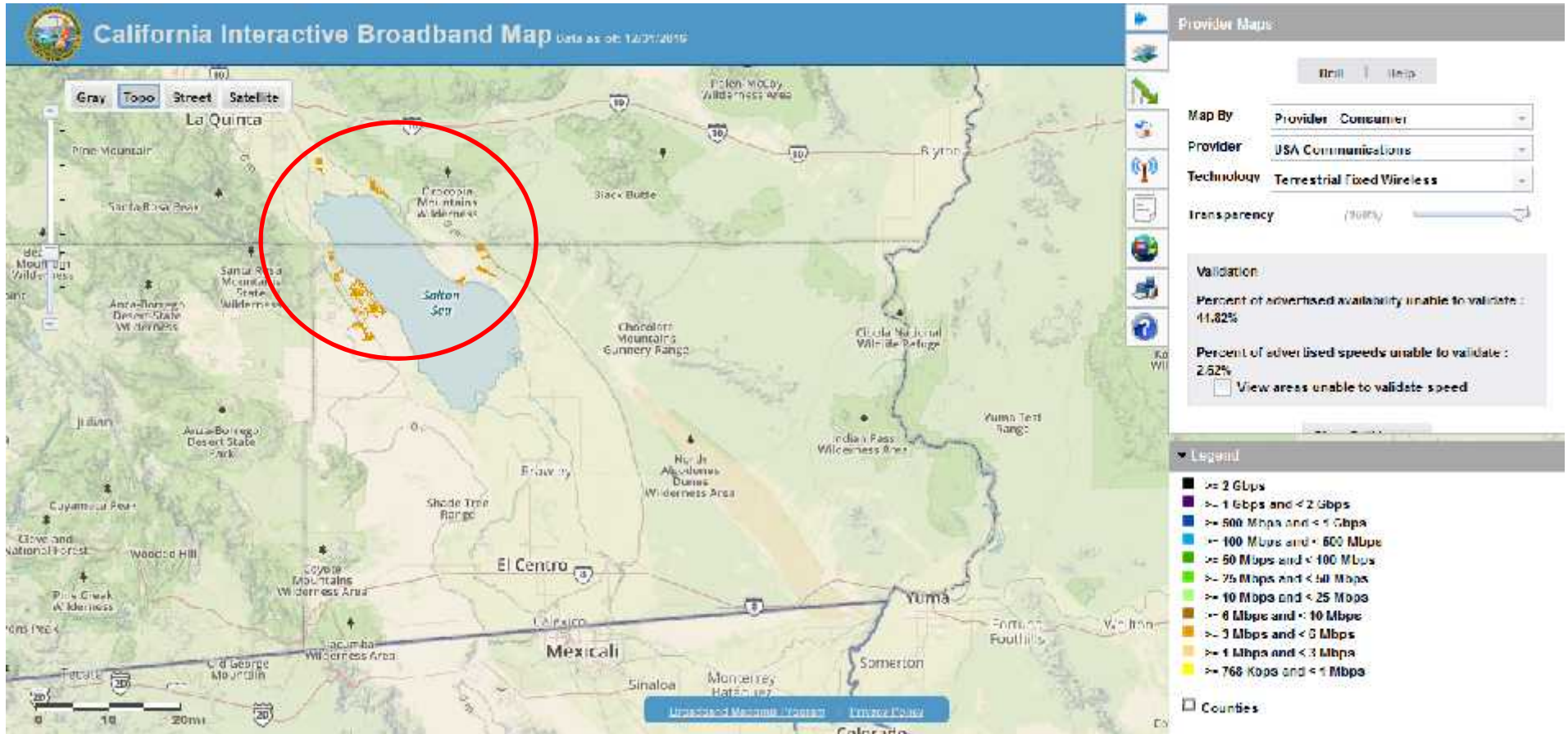


# USA Communications





# USA Communications





# Served Status

- Served is 6/1 or faster (Mbps)
- Unserved – Slow Service  
Slower than 6/1
- Unserved – No Service  
Dial-up only









# Planning Layers

Served: wireline, fixed wireless, mobile

Connect America Fund (CAF II)

Approved CASF projects

Right of First Refusal (ROFR)

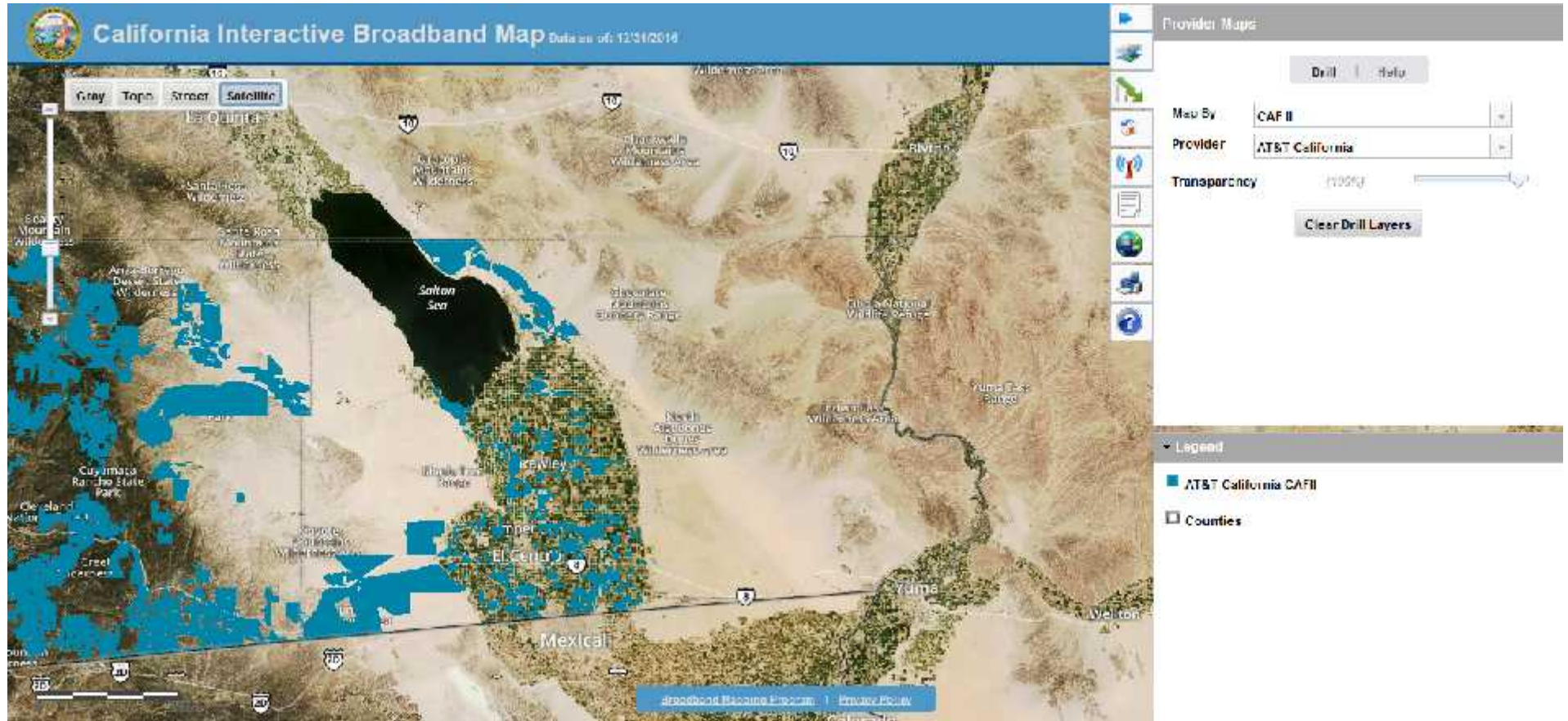
Merger Commitments







# CAF II: AT&T

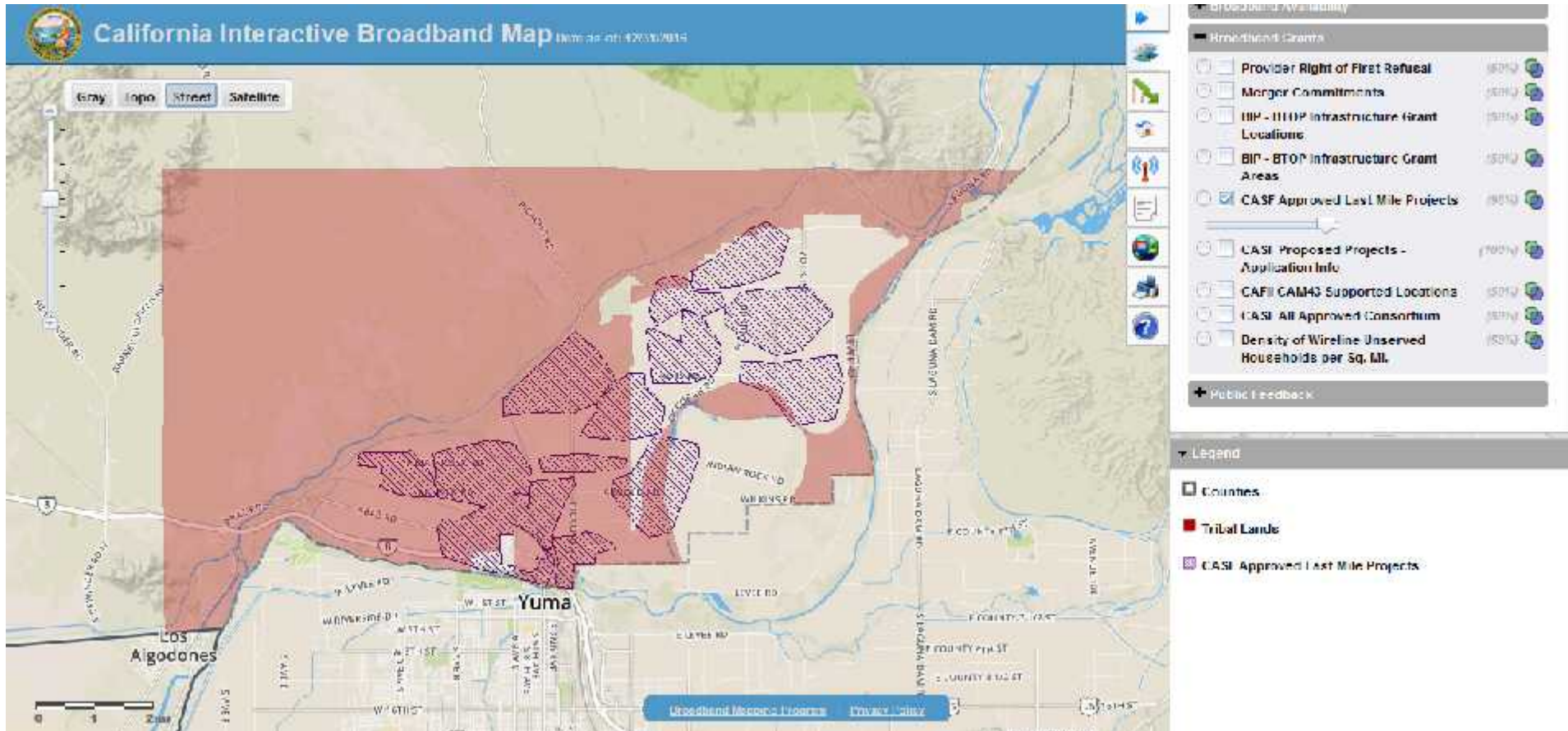








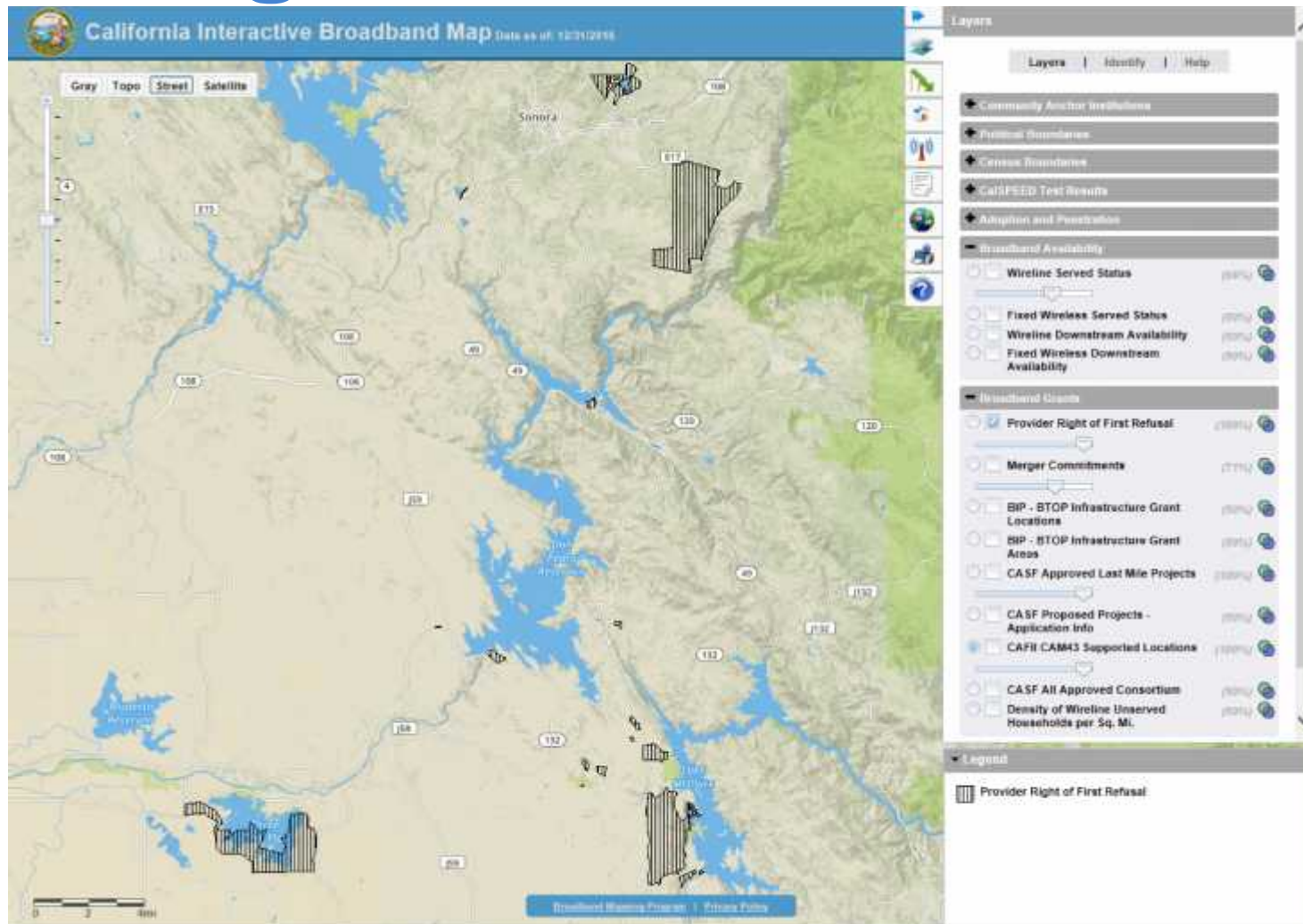
# CASF Infrastructure Projects







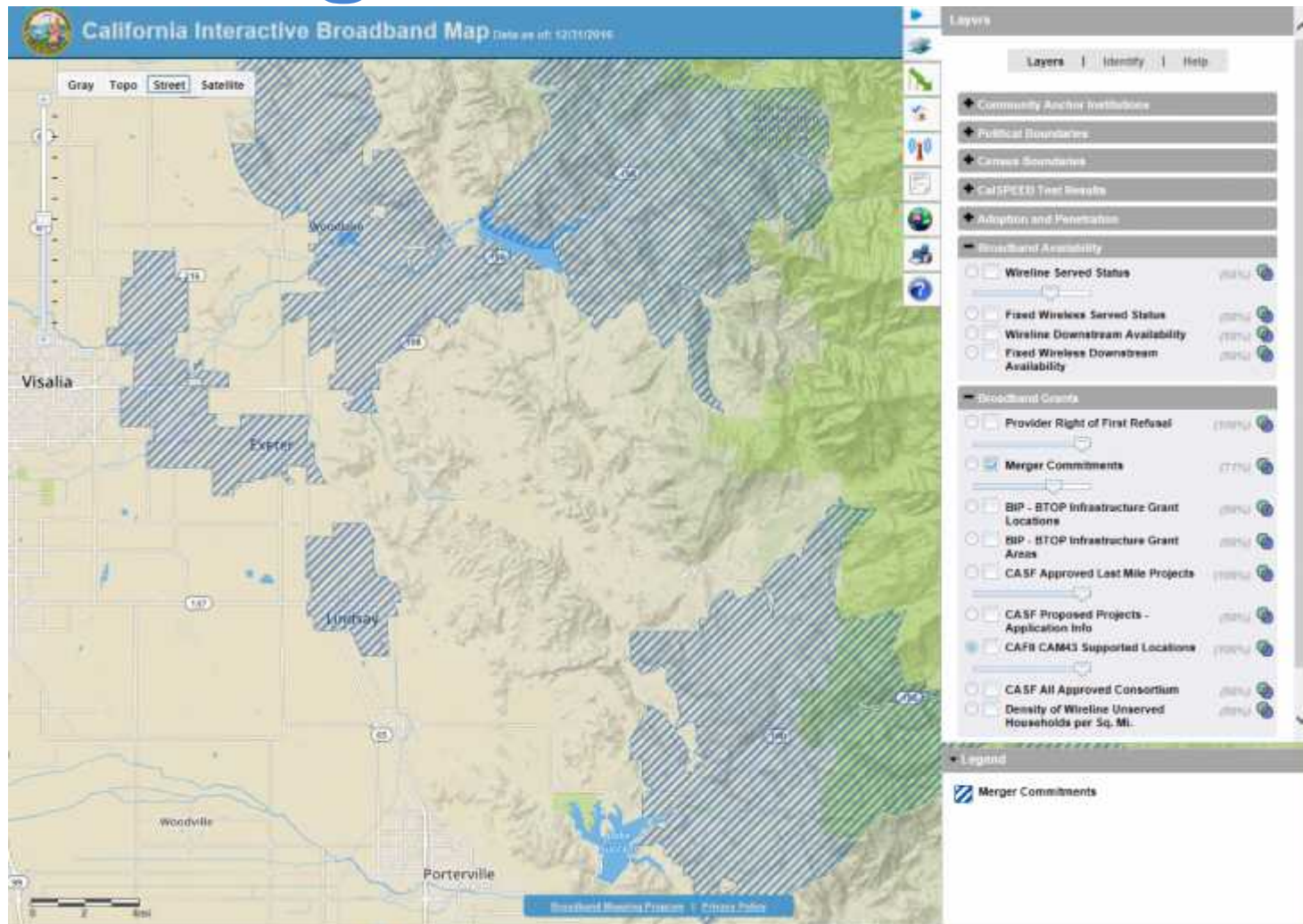
# Right of First Refusal







# Merger Commitments





# Case Study 1: Bombay Beach

California Interactive Broadband Map Database of: 12/31/2014

Gray Topo Street Satellite

Map showing a grid of land parcels in Bombay Beach, California, overlaid on a satellite image. The map is part of the California Interactive Broadband Map interface.

Layers: Layers | Identify | Help

- + Community Anchor Institutions
- + Political Boundaries
- + Census Boundaries
- + CalSPEED Test Results
- + Adoption and Penetration
- + Broadband Availability
- + Broadband Grants
- + Public Feedback

Legend

- Counties

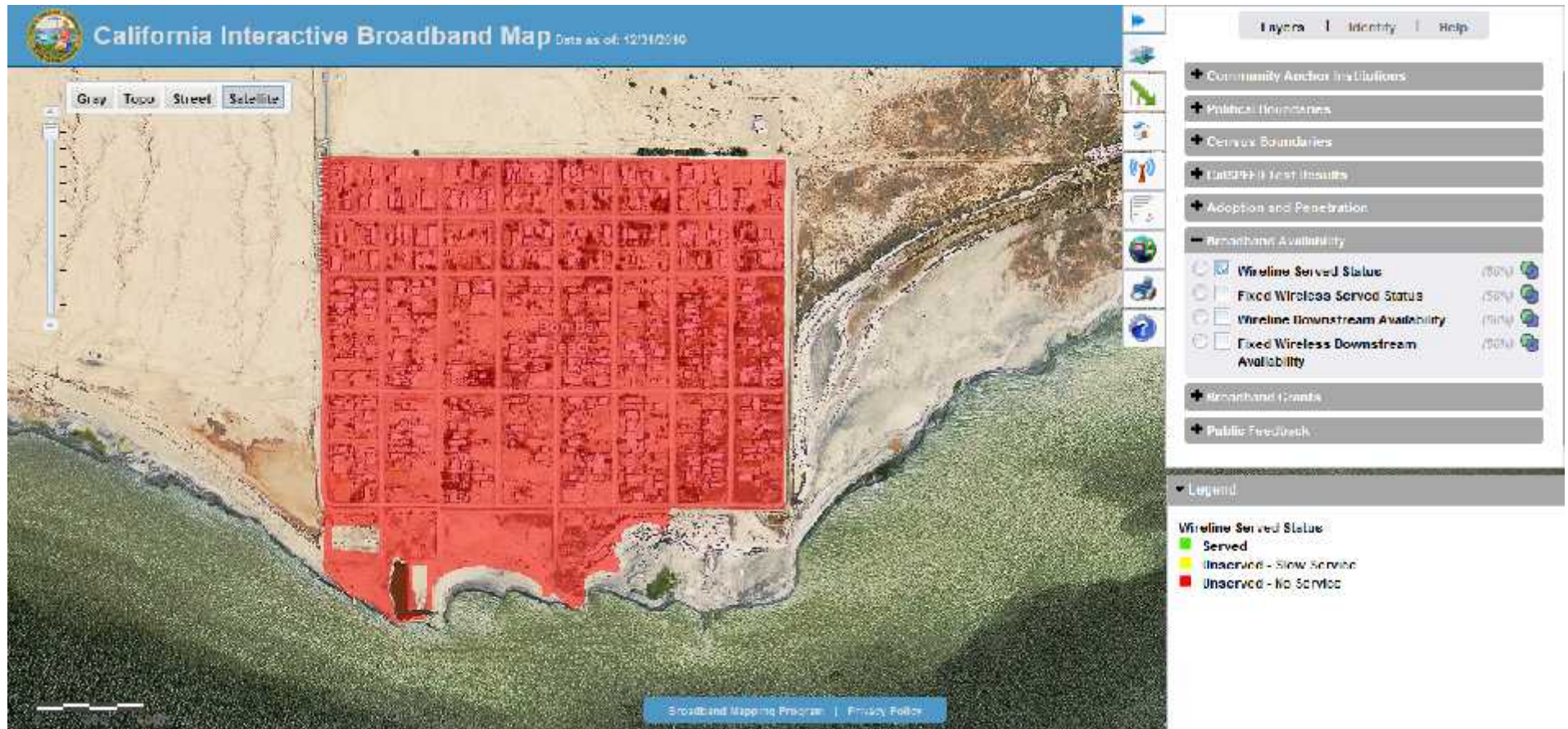
[Broadband Mapping Program](#) | [Privacy Policy](#)







# Case Study 1: Bombay Beach







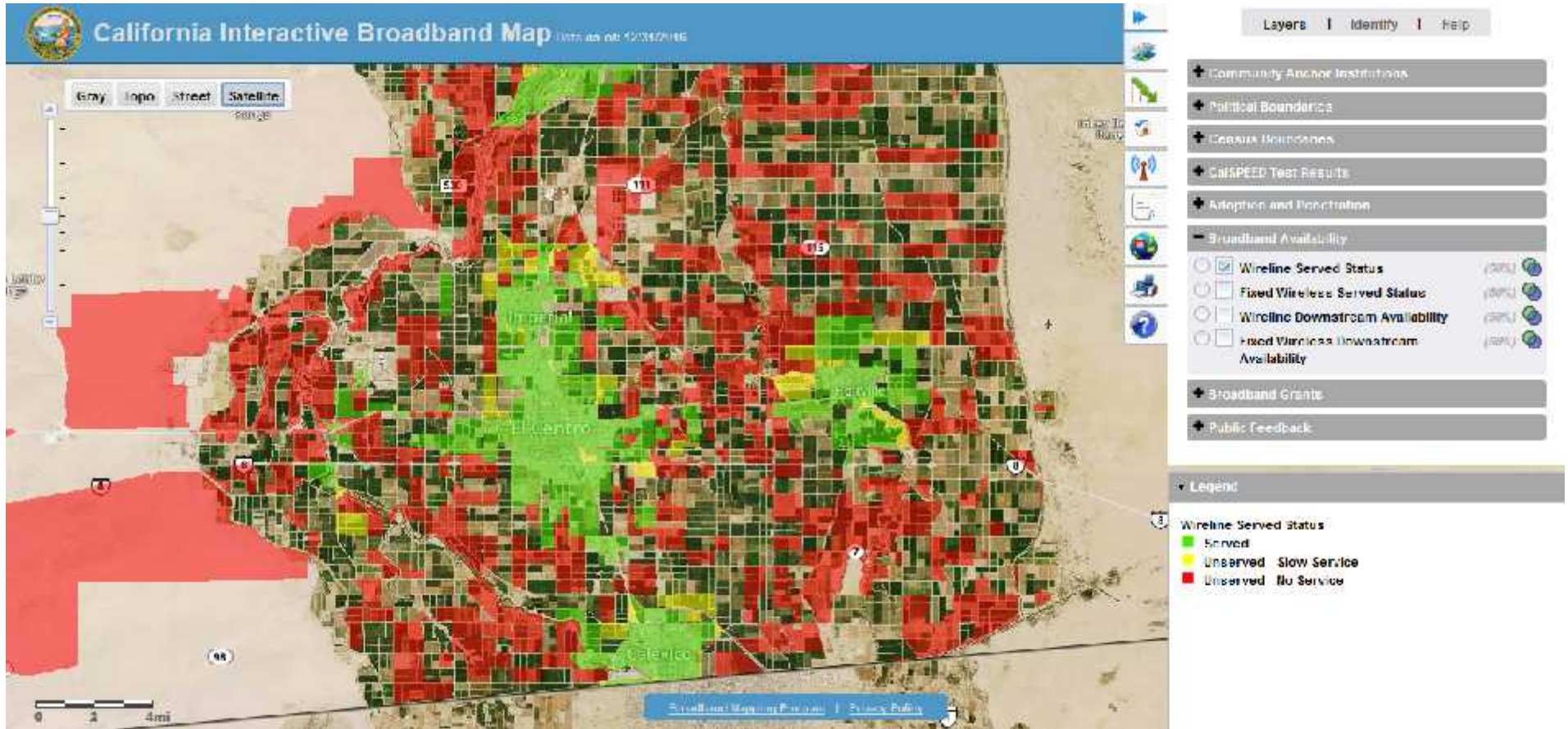
# Case Study 1: Bombay Beach

|  |           |
|--|-----------|
| Density threshold: (unserved blocks with lower density excluded) | > 5       |
| Census blocks:   | 33        |
| Households:  | 180       |
| Households in blocks Unserved with Slow Service:                 | -         |
| Households in blocks with Unserved No Service:                   | 180       |
| Overall density (includes only selected blocks):                 | 850.20    |
| Population   | 313       |
| MHI 2014   | \$ 16,820 |
| Households in blocks > 20% poverty:                              | 180       |
| Households in CAF II blocks:                                     | 0         |
| Households in ROFR blocks:                                       | 0         |
| Households in Merger Commitment blocks:                          | 0         |
| Fixed wireless   | No        |





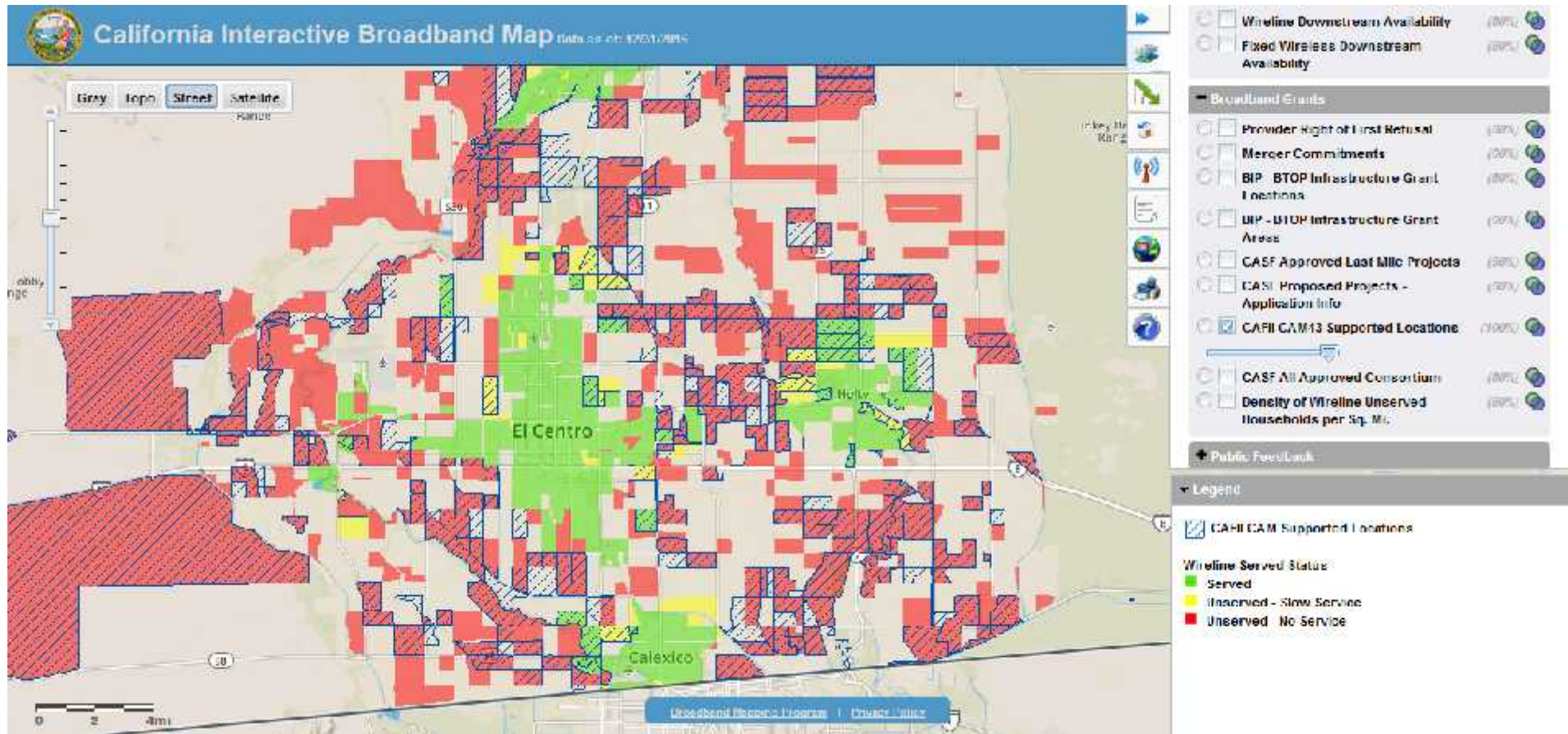
# Case Study 2: El Centro







# Case Study 2: El Centro







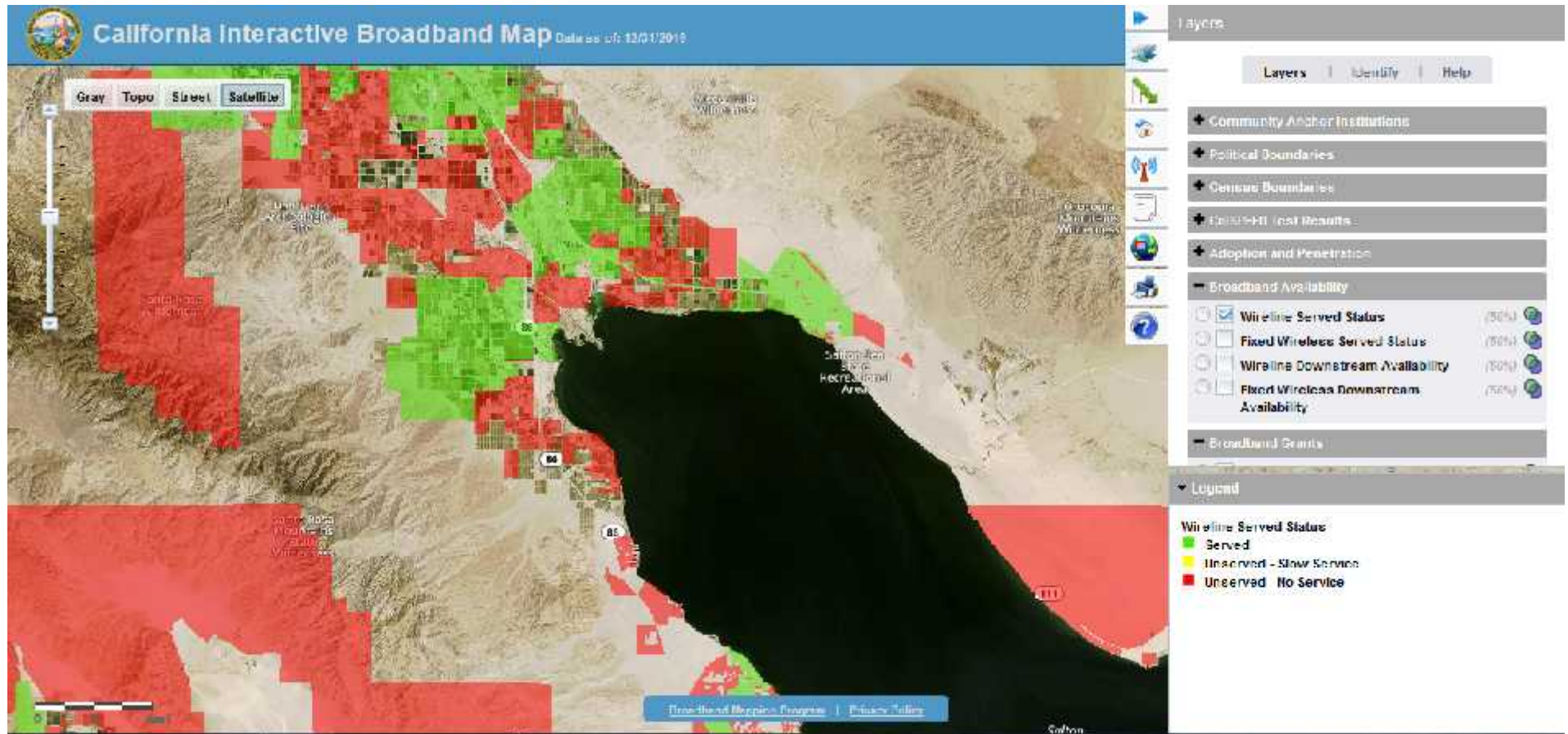
# Case Study 2: El Centro

|  |           |
|--|-----------|
| Density threshold: (unserved blocks with lower density excluded) | > 5       |
| Census blocks:   | 242       |
| Households:  | 1,246     |
| Households in blocks Unserved with Slow Service:                 | 113       |
| Households in blocks with Unserved No Service:                   | 1,132     |
| Overall density (includes only selected blocks):                 | 36.39     |
| Population   | 4,369     |
| MHI 2014   | \$ 52,164 |
| Households in blocks > 20% poverty:                              | 347       |
| Households in CAF II blocks:                                     | 407       |
| Households in ROFR blocks:                                       | 0         |
| Households in Merger Commitment blocks:                          | 0         |



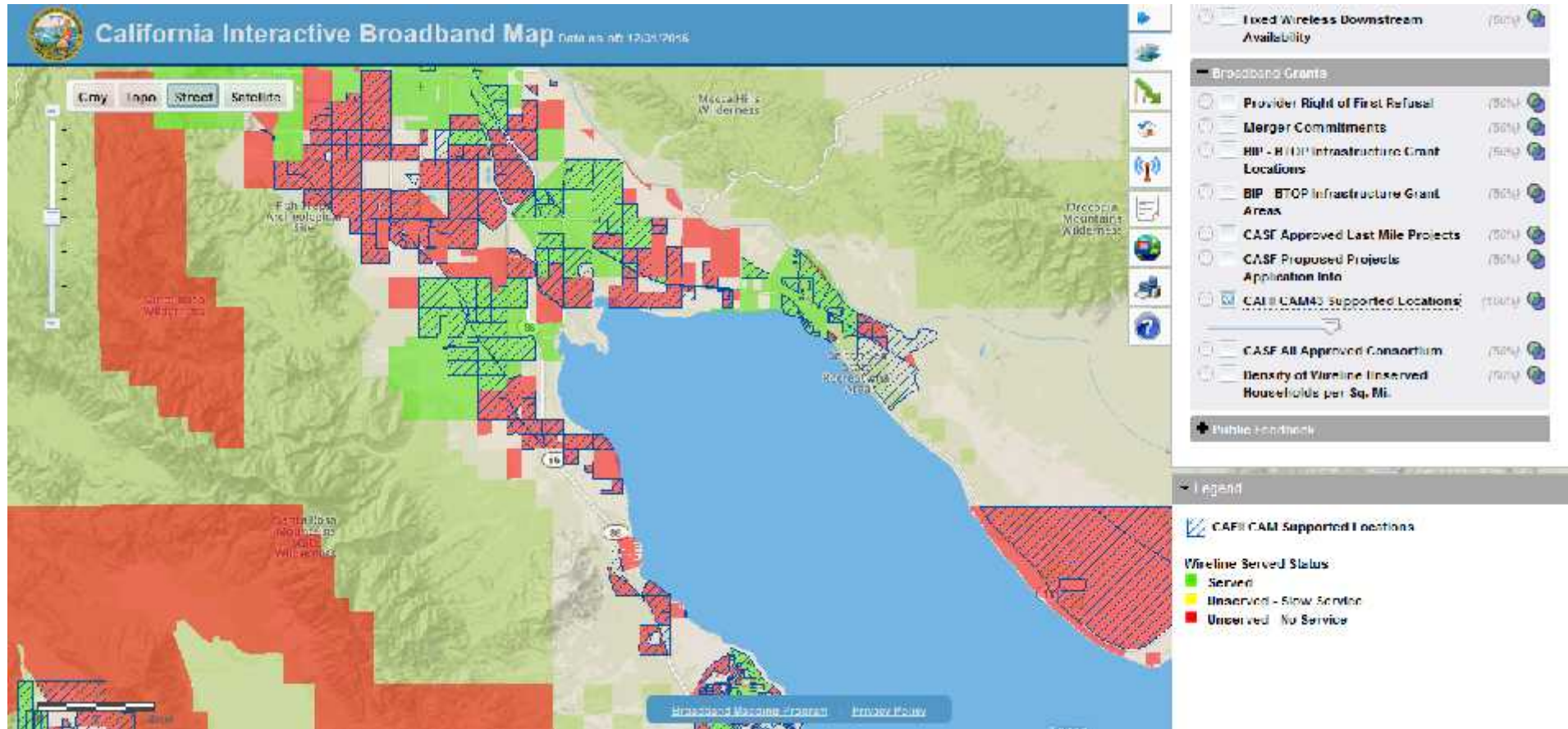


# Case Study 3: Coachella Valley





# Case Study 3: Coachella Valley










# Case Study 3: Coachella Valley

|  |           |
|--|-----------|
| Census blocks:                                   | 179       |
| Households:                                      | 2,701     |
| Households in blocks Unserved with Slow Service: | 0         |
| Households in blocks with Unserved No Service:   | 2,701     |
| Overall density (includes only selected blocks): | 66.70     |
| Population                                       | 11,979    |
| MHI 2014   | \$ 32,590 |
| Households in blocks > 20% poverty:              | 2,198     |
| Households in CAF II blocks:                     | 1,502     |
| Households in ROFR blocks:                       | 0         |
| Households in Merger Commitment blocks:          | 0         |





# Broadband Feedback

1. CalSPEED.org for Windows and macOS
2. CalSPEED mobile app  
3. Interactive Broadband Map
  - Street Address Lookup 
4. Send a hardcopy form in the mail





## 5. Email the FCC: [broadbandfail@fcc.gov](mailto:broadbandfail@fcc.gov)

 **Jessica Rosenworcel**   
@JRosenworcel Follow

Today the @FCC introduced a new national broadband map: [broadbandmap.fcc.gov](http://broadbandmap.fcc.gov). There are errors in the map but I think we can use the wisdom of crowds to fix them. E-mail [broadbandfail@fcc.gov](mailto:broadbandfail@fcc.gov) to tell the agency what's wrong--and how to make it right. [transition.fcc.gov/Daily\\_Releases](http://transition.fcc.gov/Daily_Releases) ...

 **FCC Fixed Broadband Deployment**  
This application provides a visualization of the residential fixed broadband deployment data collected on FCC Form 477. Facilities-based providers of broadband service report Form 4...  
[broadbandmap.fcc.gov](http://broadbandmap.fcc.gov)

10:51 AM - 22 Feb 2018







# Regional Consortium 98% Goal



## STATE of CALIFORNIA Wireline + Fixed Wireless Broadband Deployment

Maximum Advertised Speeds

As of December 31, 2016

| County                    | All Households<br>(CA DOF<br>1/1/2017) | Served Households (Speeds<br>are at least 6 Mbps down<br>AND 1 Mbps up) |               | Unserved Households with<br>Slow Service (Speeds less<br>than 6 Mbps down OR 1<br>Mbps up) |              | Unserved Households with<br>No Service (Speeds less than<br>768 Kbps down OR 200<br>Kbps up, or no service <sup>2</sup> ) |              |
|---------------------------|--|---|---------------|--|--------------|---|--------------|
|                           |  | Number  | Percent       | Number   | Percent      | Number  | Percent      |
| <b>California</b>         | <b>13,020,413</b>                      | <b>12,757,497</b>   | <b>98.0 %</b> | <b>59,296</b>  | <b>0.5 %</b> | <b>203,620</b>  | <b>1.6 %</b> |
| Imperial                  | 50,103                                 | 44,660  | 89.1 %        | 1,940  | 3.9 %        | 3,503   | 7.0 %        |
| San Diego                 | 1,133,723                              | 1,100,396   | 97.1 %        | 7,487  | 0.7 %        | 25,840  | 2.3 %        |
| Southern Border Broadband | 1,183,826                              | 1,145,056   | 96.7 %        | 9,427  | 0.8 %        | 29,343  | 2.5 %        |





# Q&A

- Questions
- Comments
- Concerns





# Thank You

