



# Regional Broadband Overview



**El Centro Public Forum**  
Owen Rochte, Regulatory Analyst  
Communications Division  
March 28, 2018





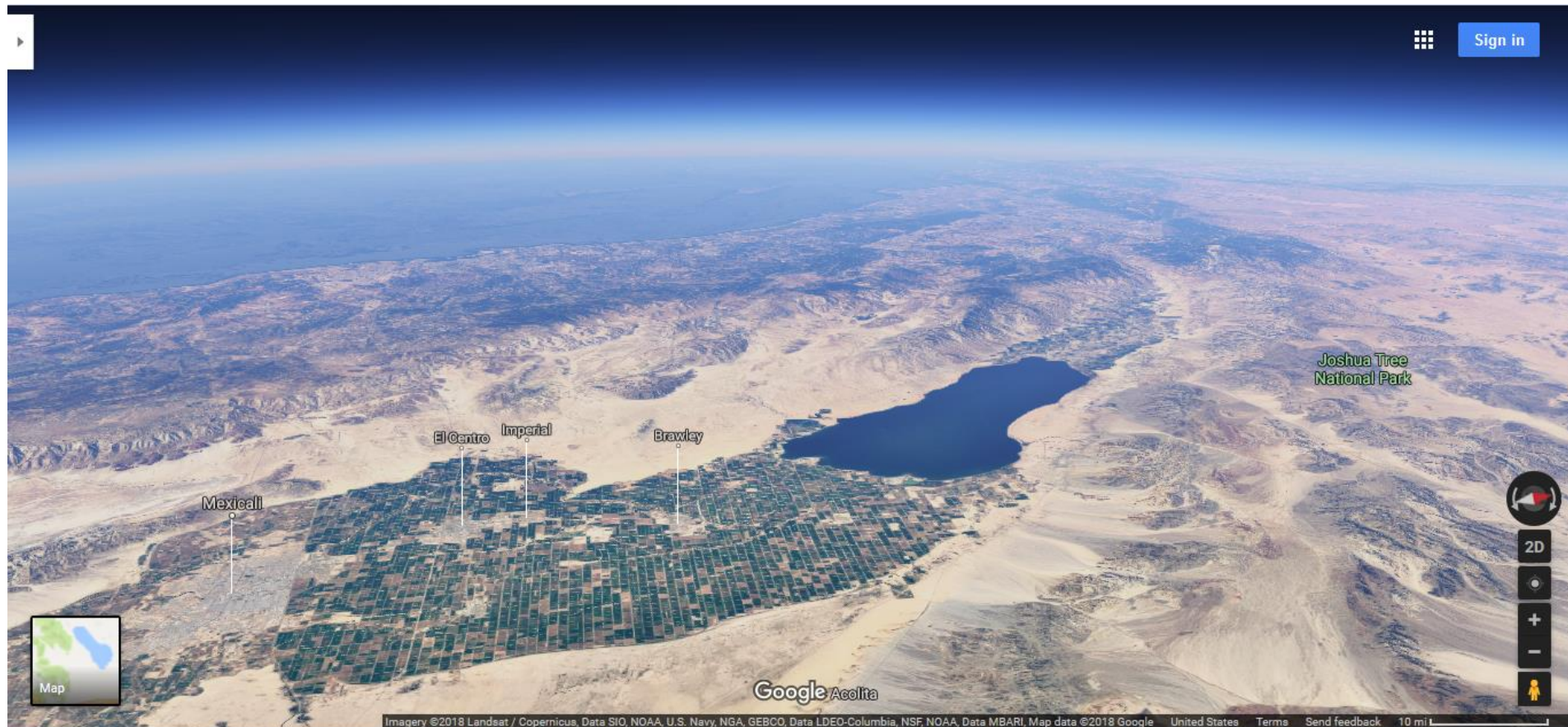
# Regional Broadband Overview

- Recent Legislation
- Internet Service Providers
- Case Studies



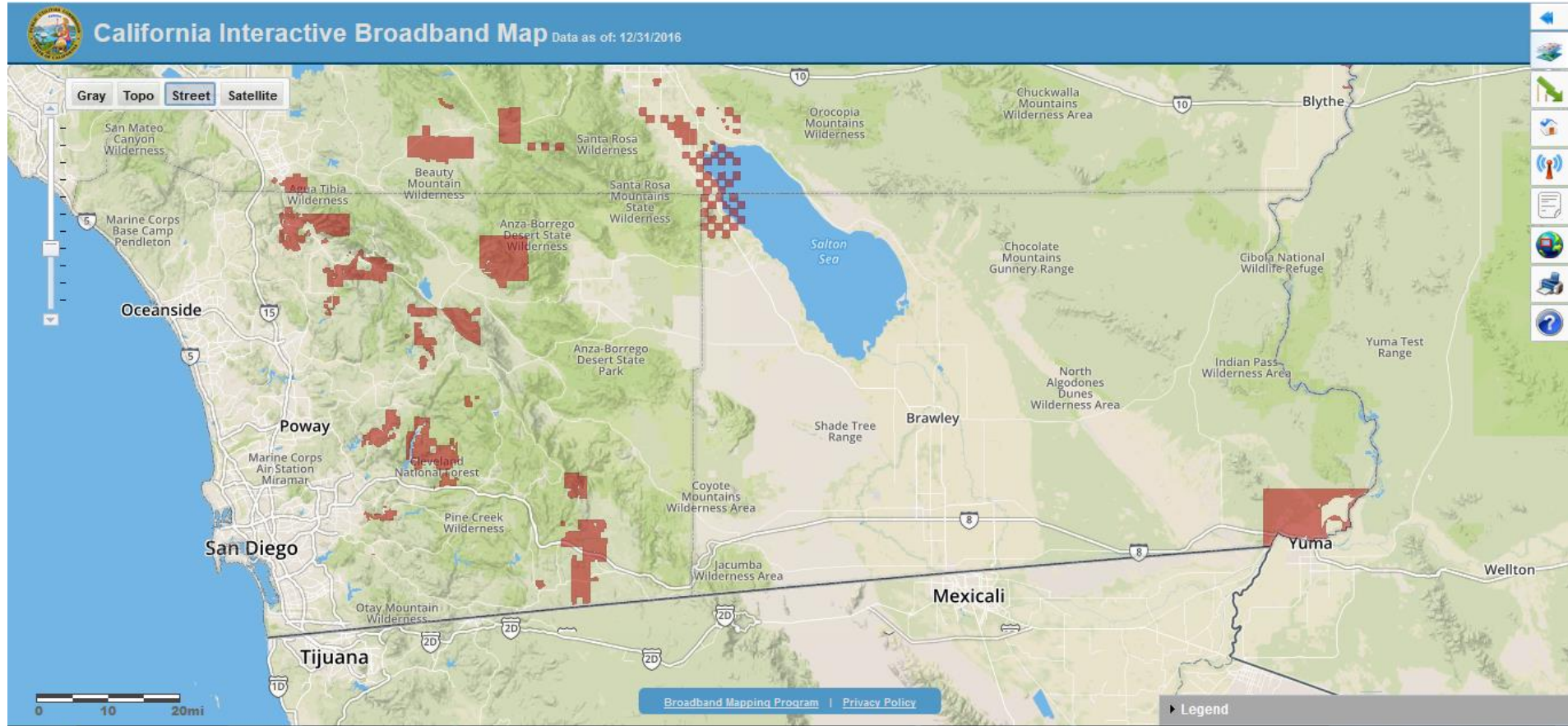


# Regional Perspective





# Tribal Lands






# AB 1665

- Defines served speeds as 6/1 (Mbps)
- Goal is for 98% of households in each consortium region to have at least 6/1
- Leverage existing infrastructure and planned builds, mergers, CAF II
- Focus consortia on infrastructure planning
- CPUC outreach with stakeholders





# <http://www.broadbandmap.ca.gov>

 **California Interactive Broadband Map** Data as of: 12/31/2016

Map navigation: Gray | Topo | **Street** | Satellite

Map features: Wilderness Area, Blythe, Orocopia Mountains Wilderness, Santa Rosa Wilderness, Anza-Borrego Desert State Wilderness, Anza-Borrego Desert State Park, Cleveland National Forest, Pine Creek Wilderness, Coyote Mountains Wilderness Area, Jacumba Wilderness Area, Shade Tree Range, Brawley, Chocolate Mountains Gunnery Range, North Algodones Dunes Wilderness Area, Indian Pass Wilderness Area, Yuma Test Range, Yuma, Wellton, Mexicali, Salton Sea, Cibola National Wildlife Refuge.

Layers panel:

- Layers | Identify | Help
- + Community Anchor Institutions
- + Political Boundaries
- + Census Boundaries
- + CalSPEED Test Results
- + Adoption and Penetration
- + Broadband Availability
- + Broadband Grants
- + Public Feedback

Legend panel:

- Legend
- Counties

Scale: 0 10 20mi

[Broadband Mapping Program](#) | [Privacy Policy](#)





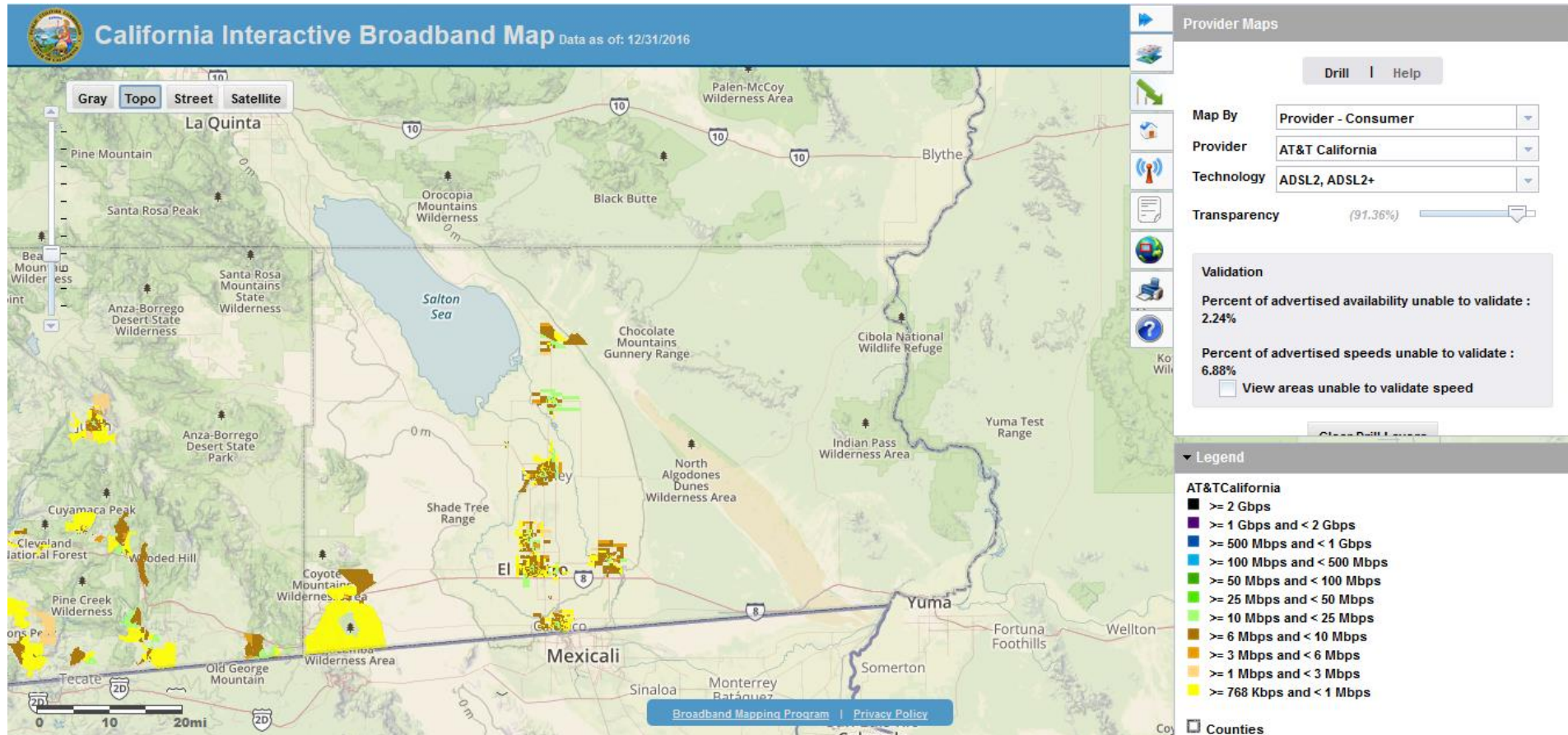
# Internet Service Providers

- AT&T
- Charter Communications
- Frontier Communications
- TDS Telecom
- USA Communications
- Others



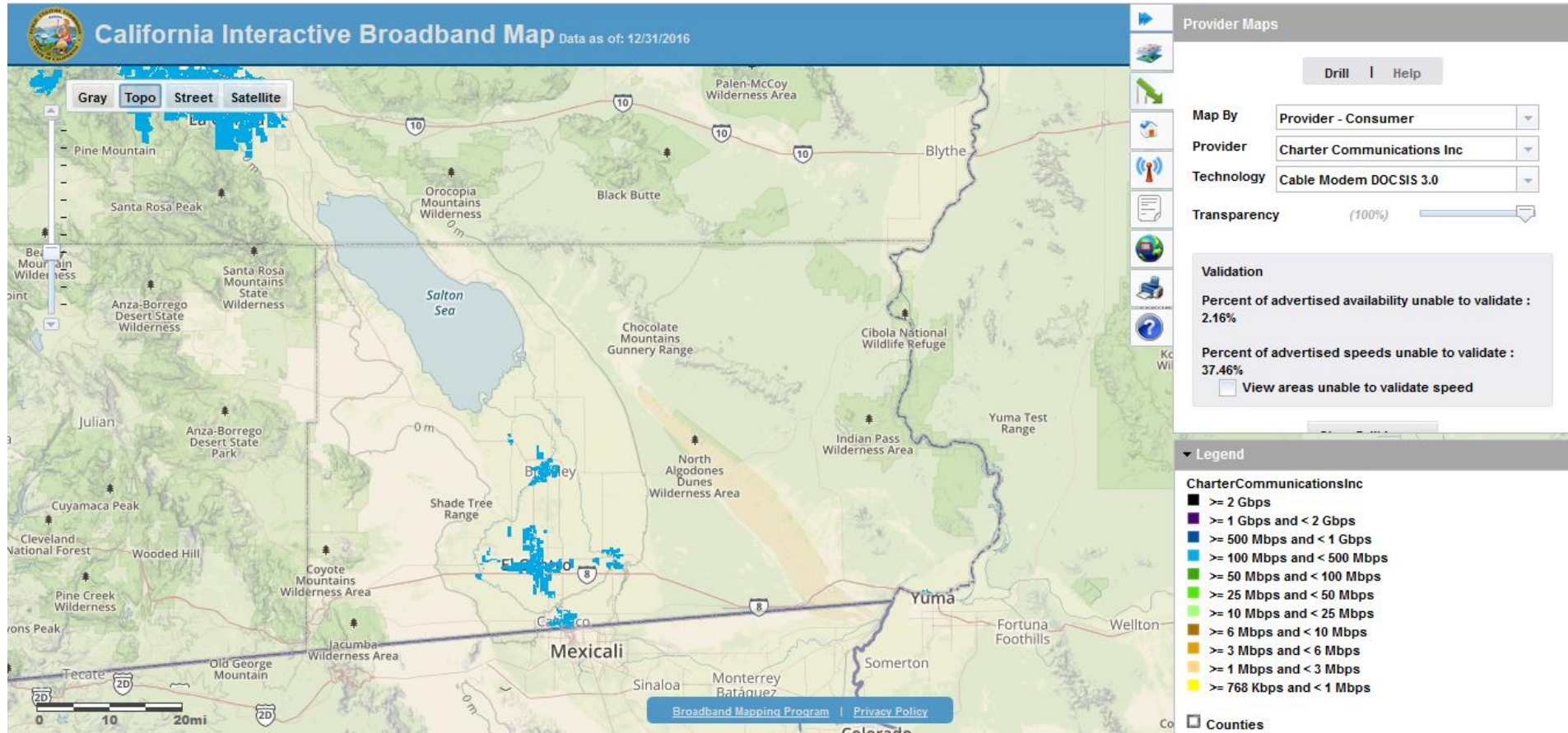


# AT&T

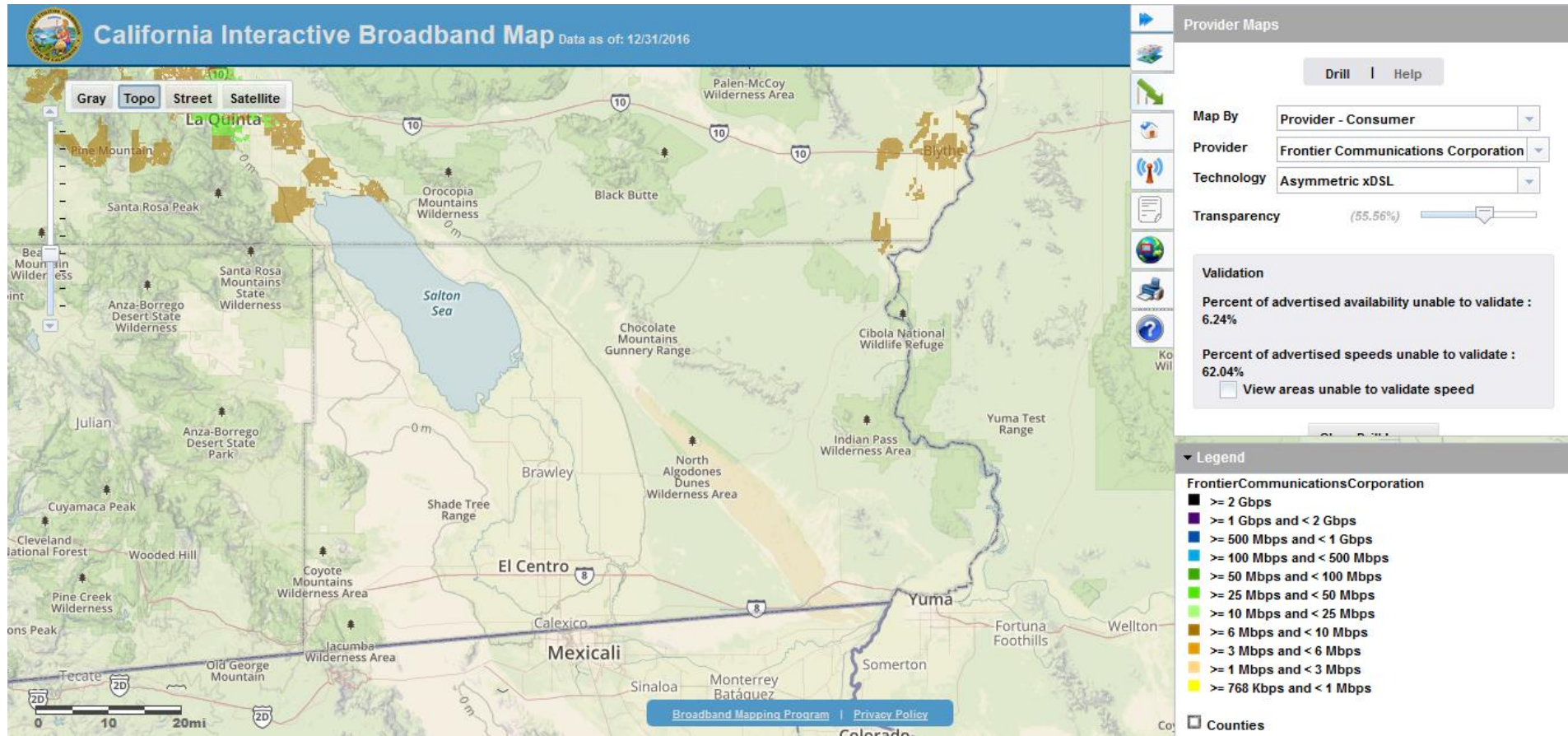




# Charter Communications

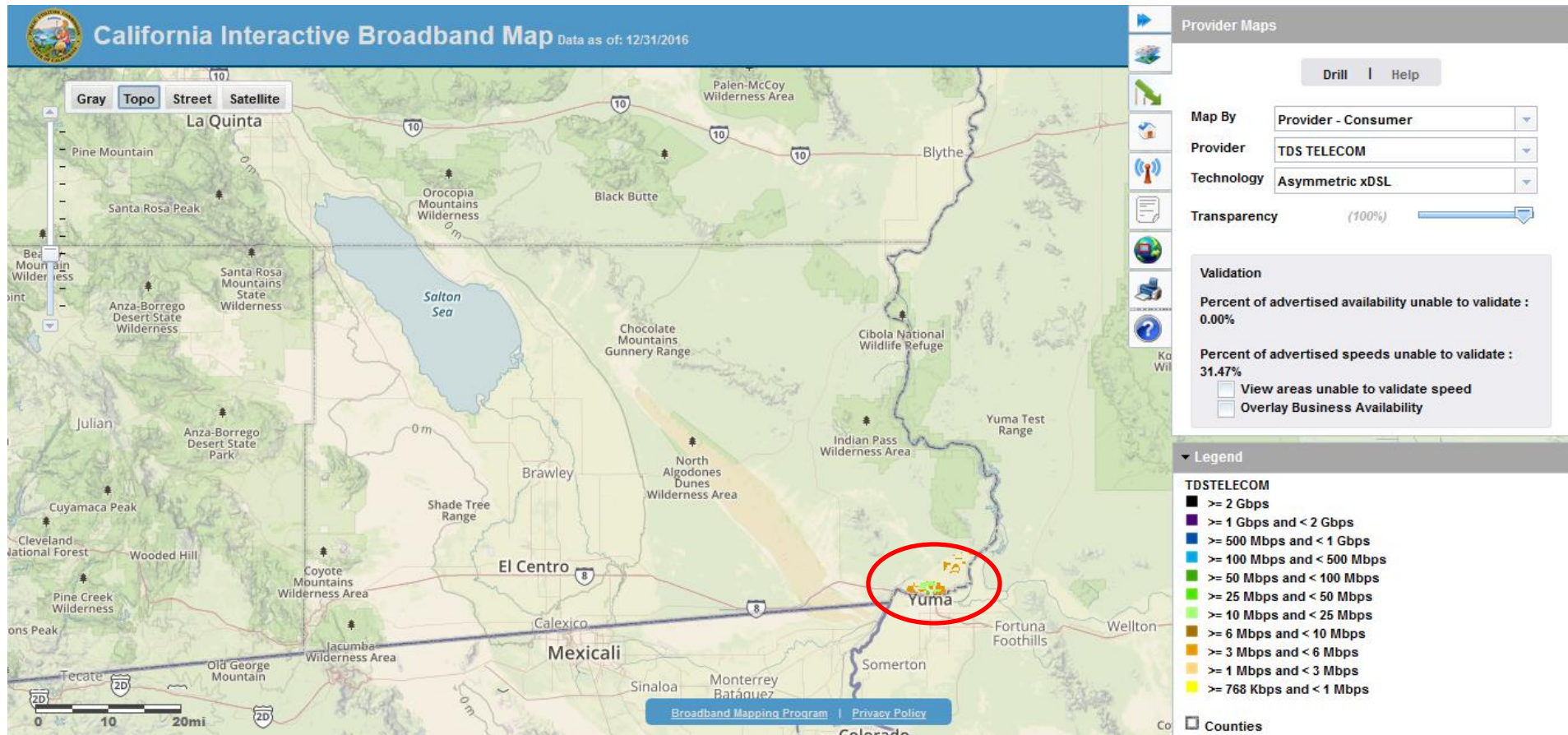


# Frontier Communications



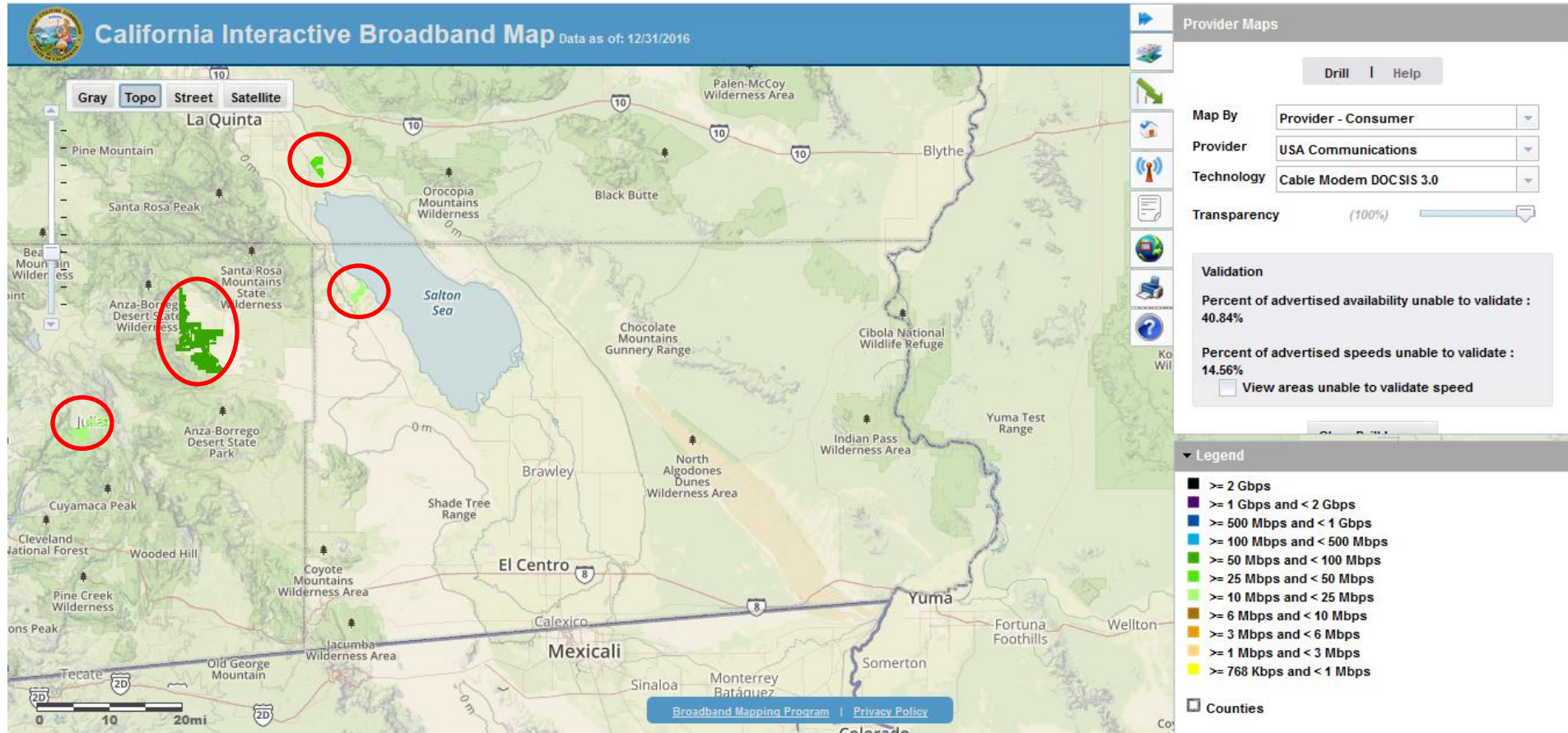


# TDS Telecom





# USA Communications





# USA Communications

**California Interactive Broadband Map** Data as of: 12/31/2016

Map Style: **Gray** | Topo | Street | Satellite

**Provider Maps**

Drill | Help

Map By: **Provider - Consumer**

Provider: **USA Communications**

Technology: **Terrestrial Fixed Wireless**

Transparency: (100%)

**Validation**

Percent of advertised availability unable to validate : **44.82%**

Percent of advertised speeds unable to validate : **2.62%**

View areas unable to validate speed

**Legend**

- ≥ 2 Gbps
- ≥ 1 Gbps and < 2 Gbps
- ≥ 500 Mbps and < 1 Gbps
- ≥ 100 Mbps and < 500 Mbps
- ≥ 50 Mbps and < 100 Mbps
- ≥ 25 Mbps and < 50 Mbps
- ≥ 10 Mbps and < 25 Mbps
- ≥ 6 Mbps and < 10 Mbps
- ≥ 3 Mbps and < 6 Mbps
- ≥ 1 Mbps and < 3 Mbps
- ≥ 768 Kbps and < 1 Mbps

Counties

Broadband Mapping Program | Privacy Policy





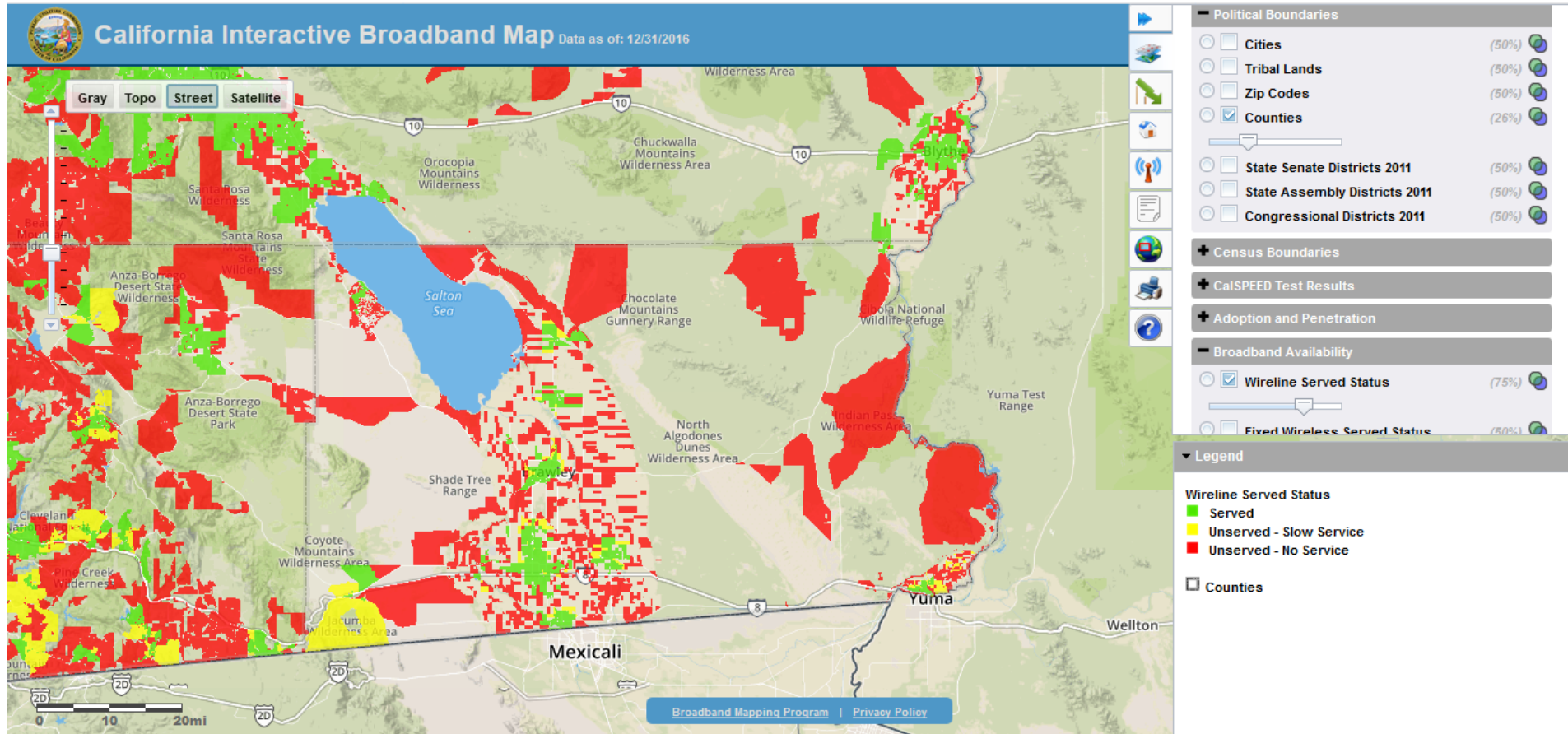
# Served Status

- Served is 6/1 or faster (Mbps)
- Unserved – Slow Service  
Slower than 6/1
- Unserved – No Service  
Dial-up only





# Regional Served Status





# Planning Layers

Served: wireline, fixed wireless, mobile  
Connect America Fund (CAF II)  
Approved CASF projects  
Right of First Refusal (ROFR)  
Merger Commitments







# CAF II: AT&T

**California Interactive Broadband Map** Data as of: 12/31/2016

Map Style: **Gray** | Topo | Street | **Satellite**

**Provider Maps**

Drill | Help

Map By: CAF II

Provider: AT&T California

Transparency: (100%)

Clear Drill Layers

**Legend**

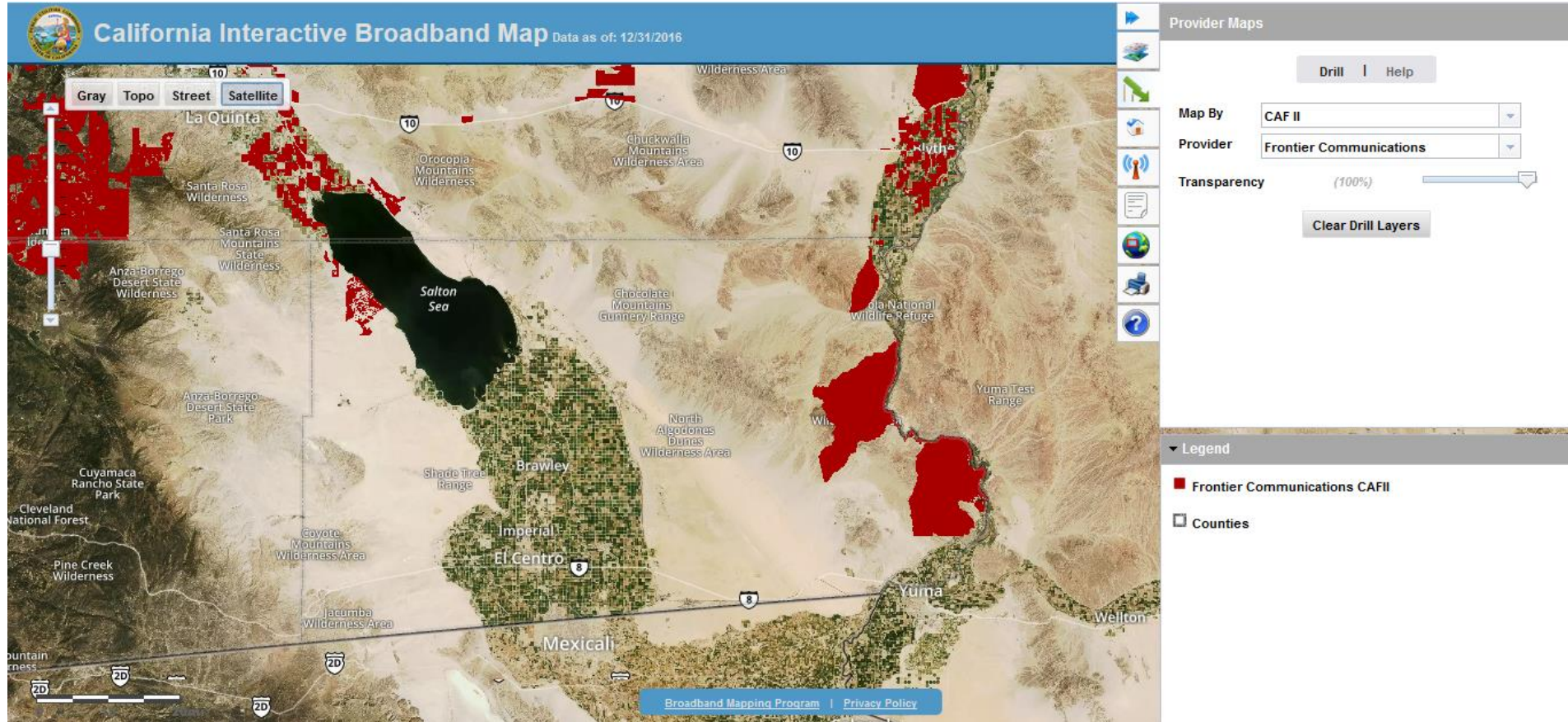
- AT&T California CAFII
- Counties

Broadband Mapping Program | Privacy Policy

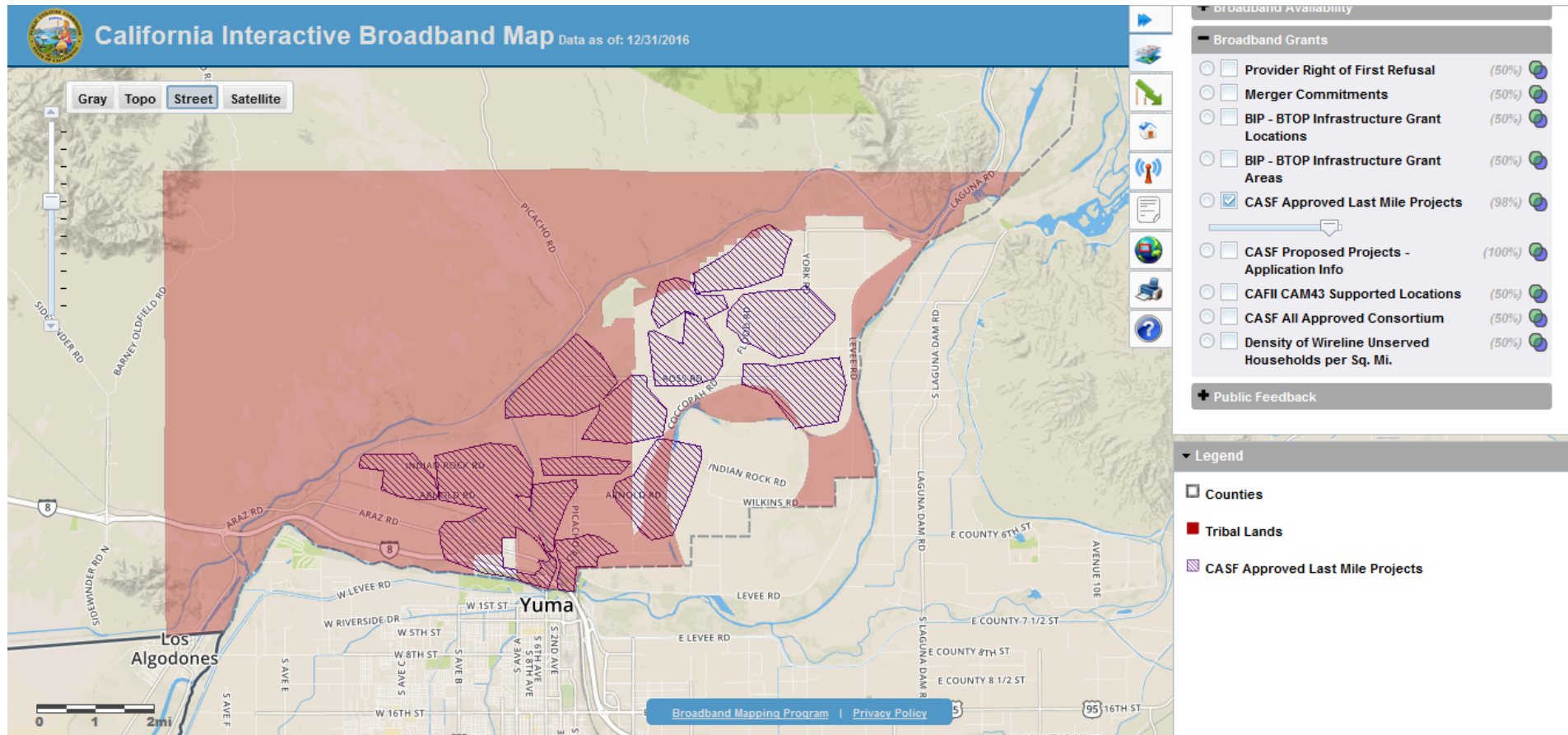




# CAF II: Frontier

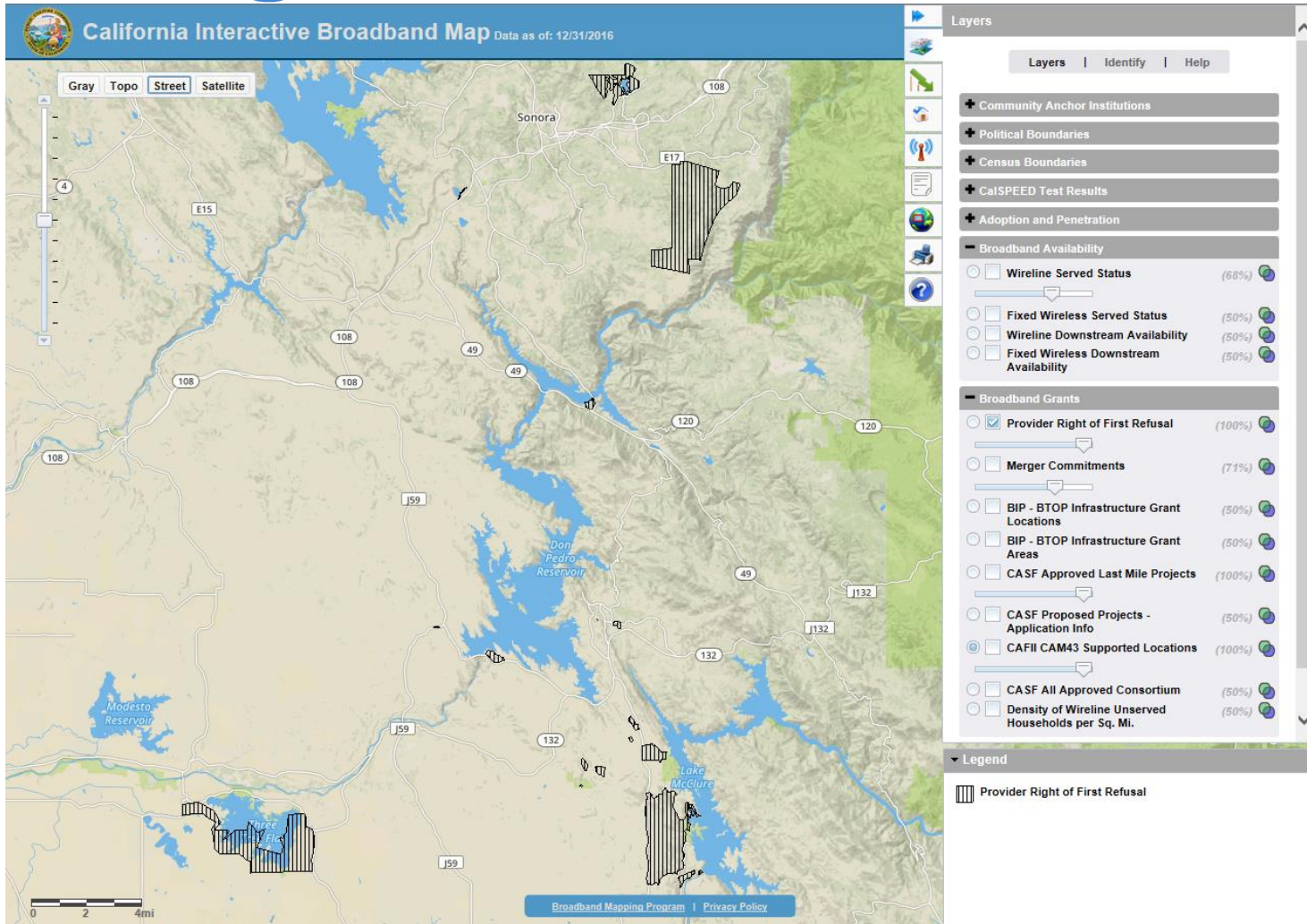


# CASF Infrastructure Projects



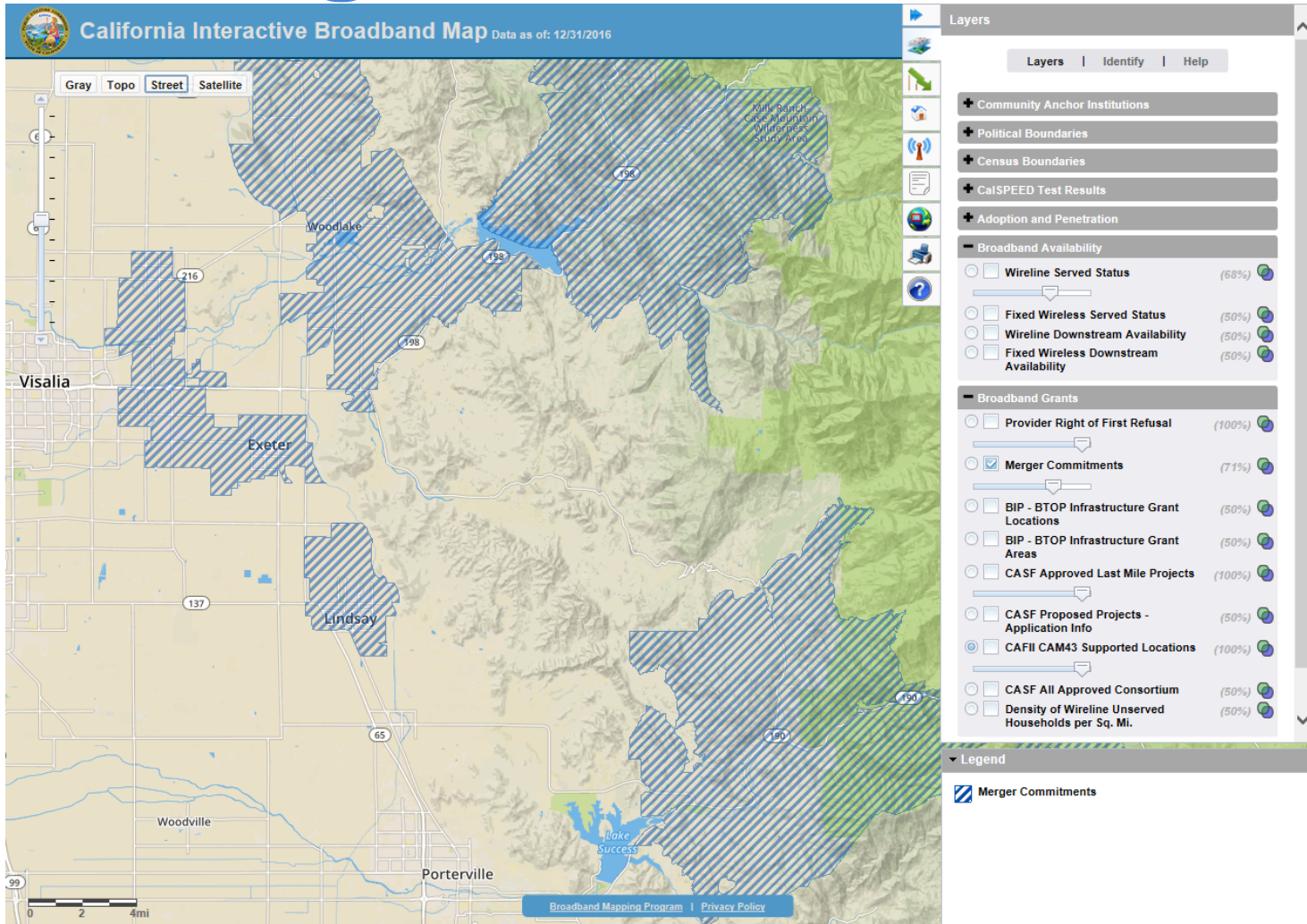


# Right of First Refusal





# Merger Commitments





# Case Study 1: Bombay Beach

California Interactive Broadband Map Data as of: 12/31/2016

Gray Topo Street Satellite

AVENUE AVENUE A

Bombay Beach

Broadband Mapping Program | Privacy Policy

Layers

Layers | Identify | Help

- + Community Anchor Institutions
- + Political Boundaries
- + Census Boundaries
- + CalSPEED Test Results
- + Adoption and Penetration
- + Broadband Availability
- + Broadband Grants
- + Public Feedback

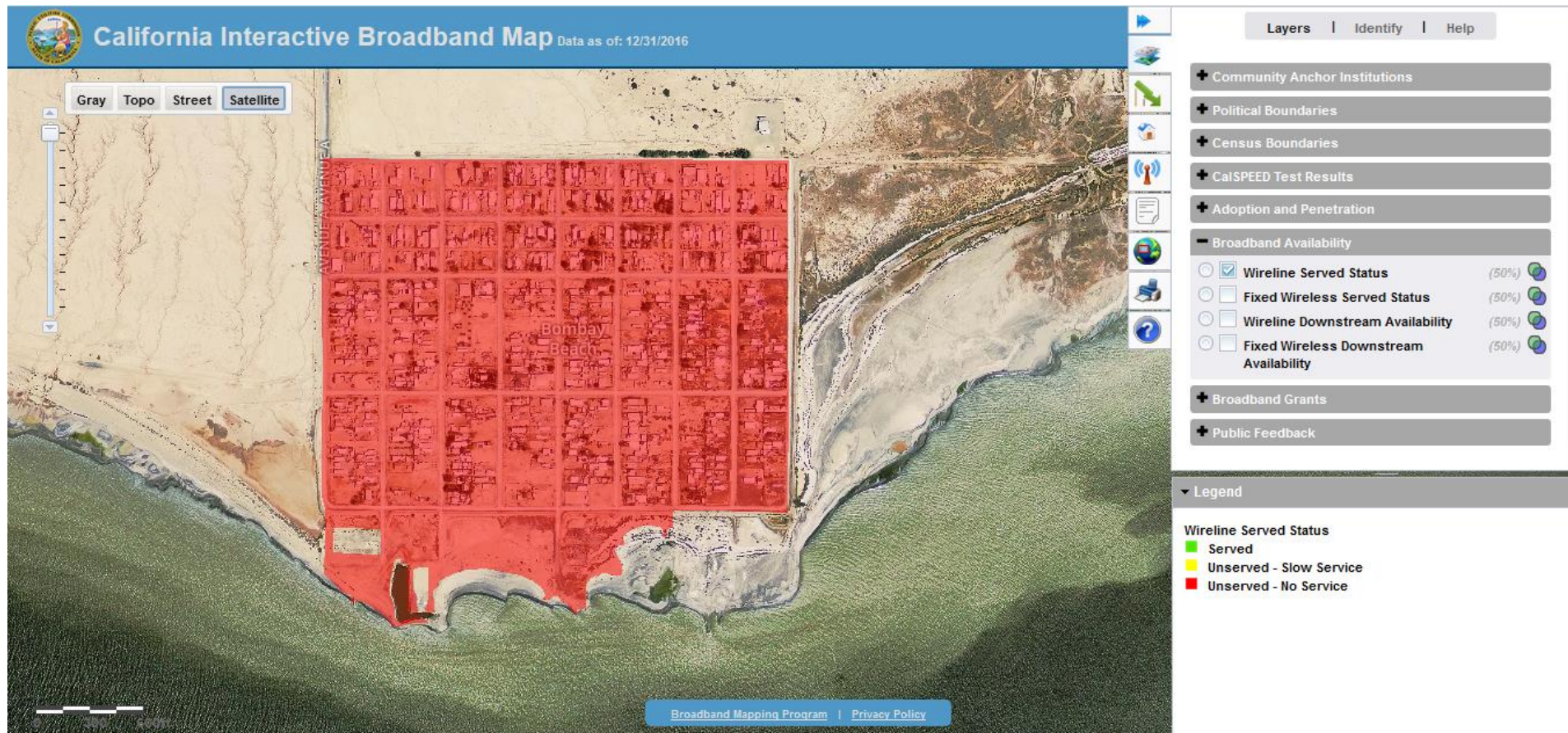
Legend

Counties





# Case Study 1: Bombay Beach





# Case Study 1: Bombay Beach

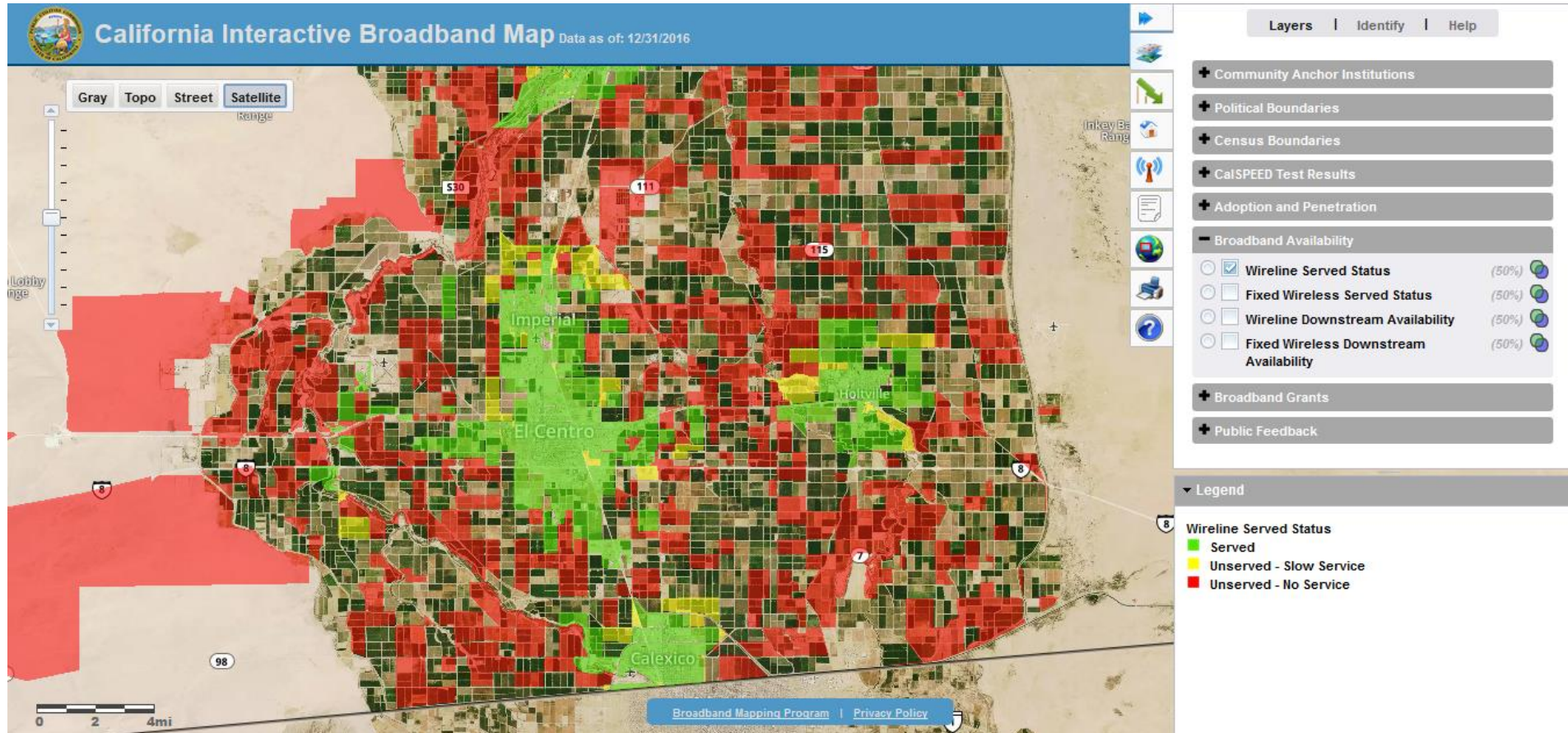
Density threshold: (unserved blocks with lower density excluded)	> 5
Census blocks:	33
Households:	180
Households in blocks Unserved with Slow Service:	-
Households in blocks with Unserved No Service:	180
Overall density (includes only selected blocks):	850.20
Population	313
MHI 2014	\$ 16,820
Households in blocks > 20% poverty:	180
Households in CAF II blocks:	0
Households in ROFR blocks:	0
Households in Merger Commitment blocks:	0
Fixed wireless	No





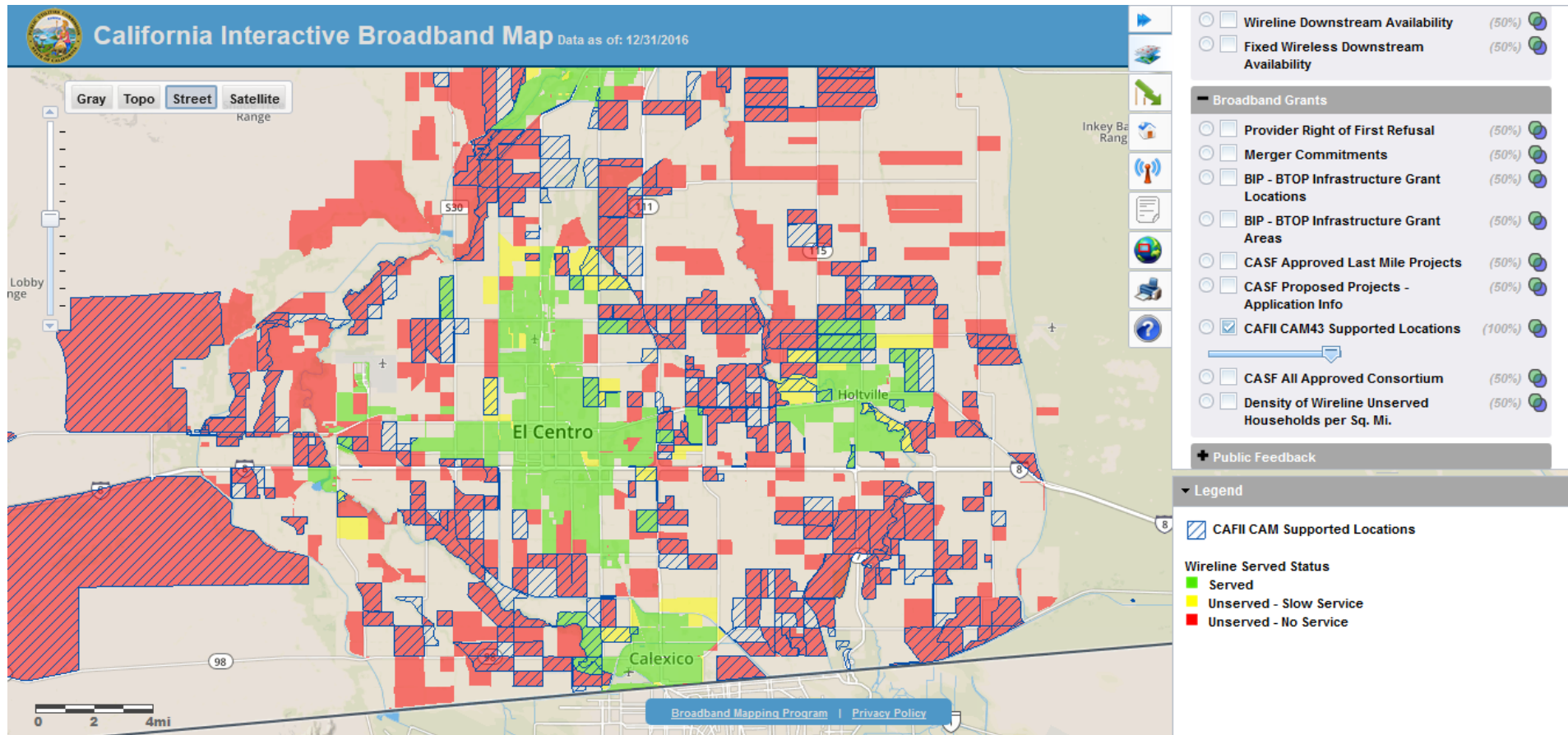


# Case Study 2: El Centro





# Case Study 2: El Centro





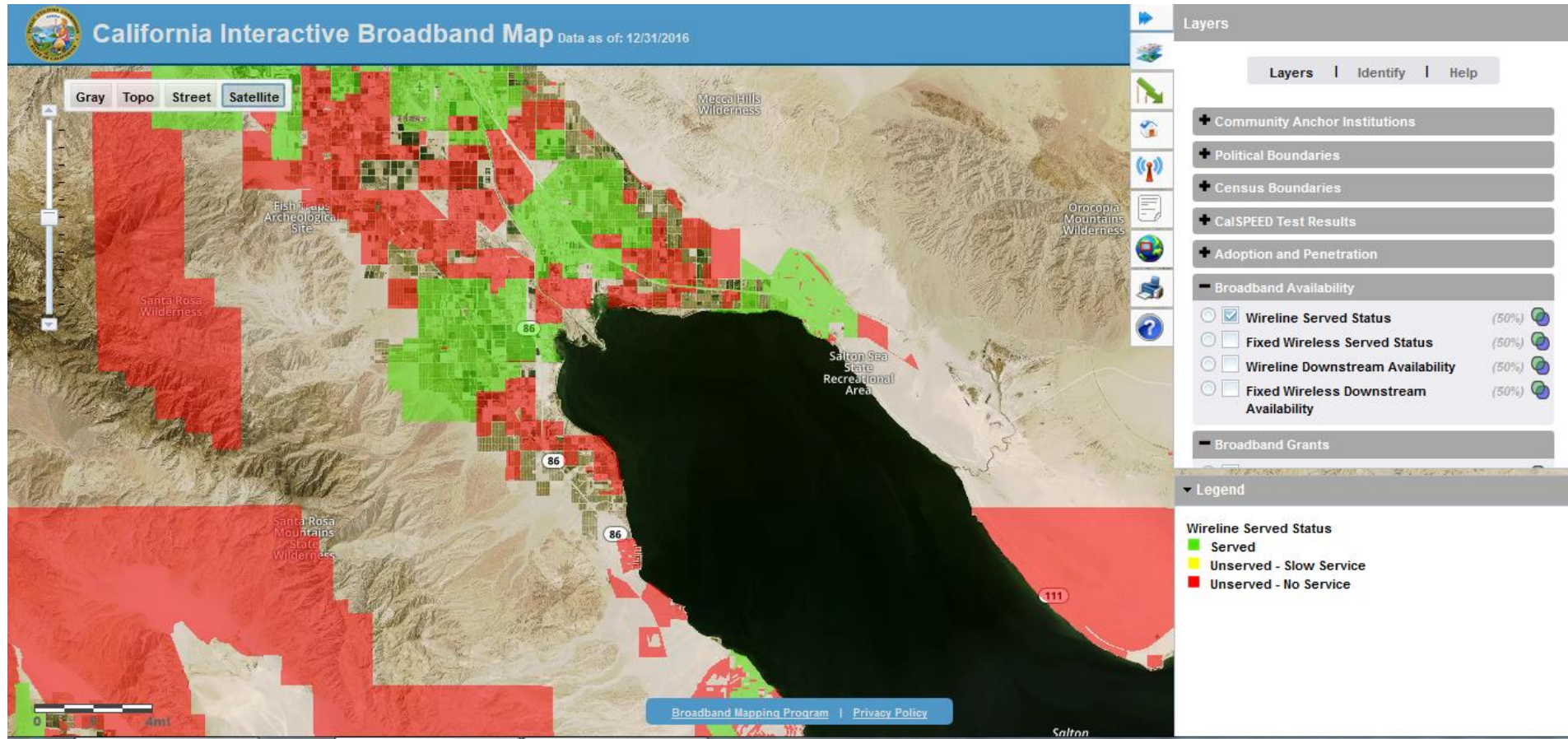
# Case Study 2: El Centro

Density threshold: (unserved blocks with lower density excluded)	> 5
Census blocks:	242
Households:	1,246
Households in blocks Unserved with Slow Service:	113
Households in blocks with Unserved No Service:	1,132
Overall density (includes only selected blocks):	36.39
Population	4,369
MHI 2014	\$ 52,164
Households in blocks > 20% poverty:	347
Households in CAF II blocks:	407
Households in ROFR blocks:	0
Households in Merger Commitment blocks:	0



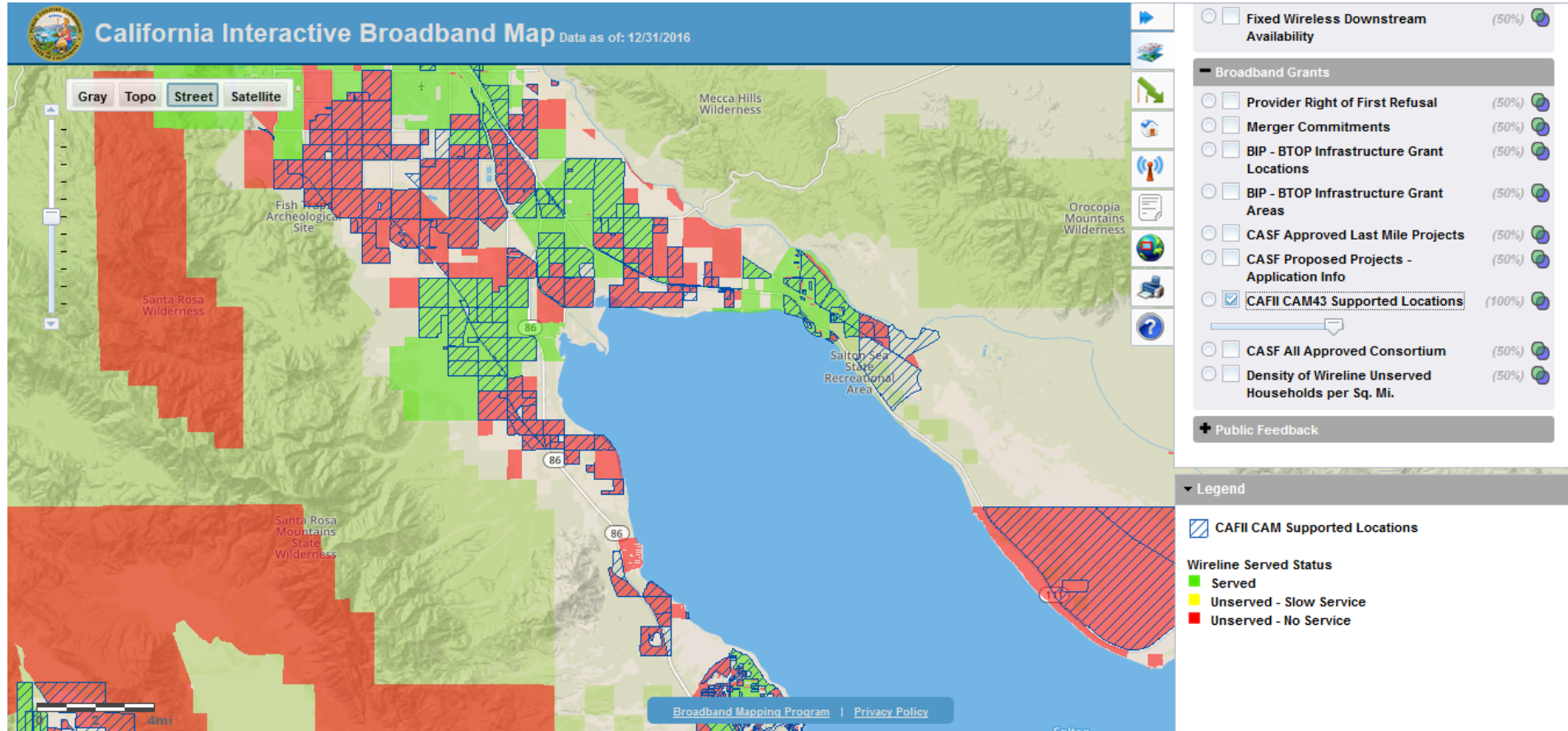


# Case Study 3: Coachella Valley





# Case Study 3: Coachella Valley








# Case Study 3: Coachella Valley

Census blocks:	179
Households:	2,701
Households in blocks Unserved with Slow Service:	0
Households in blocks with Unserved No Service:	2,701
Overall density (includes only selected blocks):	66.70
Population	11,979
MHI 2014	\$ 32,590
Households in blocks > 20% poverty:	2,198
Households in CAF II blocks:	1,502
Households in ROFR blocks:	0
Households in Merger Commitment blocks:	0





# Broadband Feedback

1. CalSPEED.org for Windows and macOS
2. CalSPEED mobile app  
3. Interactive Broadband Map
  - Street Address Lookup 
4. Send a hardcopy form in the mail





## 5. Email the FCC: [broadbandfail@fcc.gov](mailto:broadbandfail@fcc.gov)



**Jessica Rosenworcel** ✓

@JRosenworcel

Follow



Today the @FCC introduced a new national broadband map: [broadbandmap.fcc.gov](http://broadbandmap.fcc.gov). There are errors in the map but I think we can use the wisdom of crowds to fix them. E-mail [broadbandfail@fcc.gov](mailto:broadbandfail@fcc.gov) to tell the agency what's wrong--and how to make it right. [transition.fcc.gov/Daily\\_Releases](http://transition.fcc.gov/Daily_Releases) ...



### FCC Fixed Broadband Deployment

This application provides a visualization of the residential fixed broadband deployment data collected on FCC Form 477. Facilities-based providers of broadband service report Form 4...  
[broadbandmap.fcc.gov](http://broadbandmap.fcc.gov)

10:51 AM - 22 Feb 2018





# Regional Consortium 98% Goal



California  
Public Utilities  
Commission



## STATE of CALIFORNIA Wireline + Fixed Wireless Broadband Deployment

Maximum Advertised Speeds

As of December 31, 2016

County	All Households (CA DOF 1/1/2017)	Served Households (Speeds are at least 6 Mbps down AND 1 Mbps up)		Unserved Households with Slow Service (Speeds less than 6 Mbps down OR 1 Mbps up)		Unserved Households with No Service (Speeds less than 768 Kbps down OR 200 Kbps up, or no service <sup>2</sup> )	
		Number	Percent	Number	Percent	Number	Percent
California	13,020,413	12,757,497	98.0 %	59,296	0.5 %	203,620	1.6 %
Imperial	50,103	44,660	89.1 %	1,940	3.9 %	3,503	7.0 %
San Diego	1,133,723	1,100,396	97.1 %	7,487	0.7 %	25,840	2.3 %
Southern Border Broadband	1,183,826	1,145,056	96.7 %	9,427	0.8 %	29,343	2.5 %





# Q&A

- Questions
- Comments
- Concerns





# Thank You

